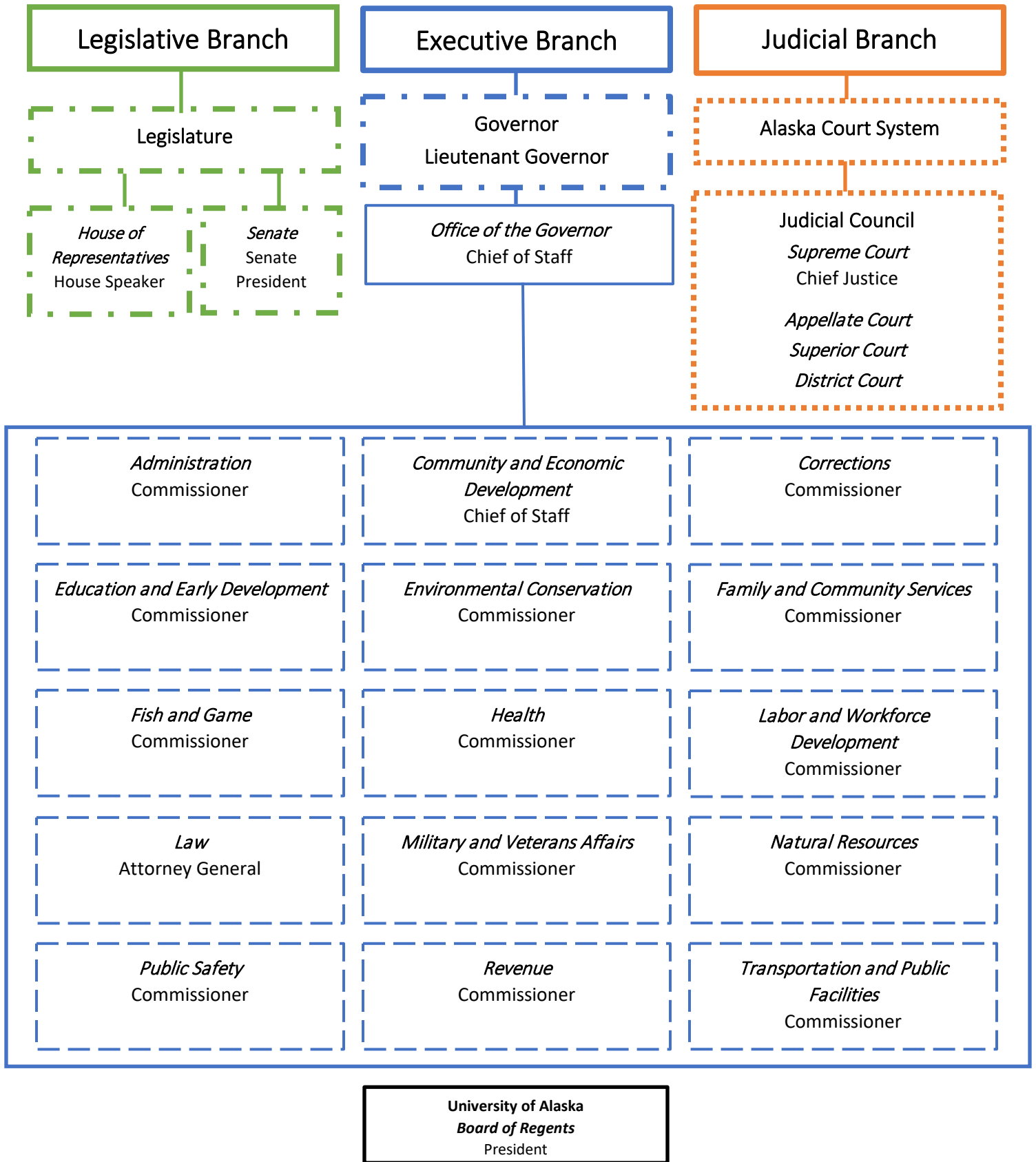


State of Alaska Organization Chart



- - - Elected by popular vote (includes Lieutenant Governor, elected on same ticket as Governor).
- Justices and Judges of the Courts nominated by Judicial Council, selected by Governor and there after subject to voter approval.
- — — Department heads appointed by Governor and confirmed by the Legislature.

- State of Alaska Organization Chart

- Legislative Branch

- Legislature (Elected by Popular Vote)

- *House of Representatives*

- House Speaker

- *Senate*

- Senate President

- Executive Branch

- Governor (Elected by Popular Vote)

- Office of the Governor

- Chief of Staff (appointed by Governor)

- Administration

- Commissioner (appointed by Governor, Confirmed by Legislature)

- Community and Economic Development

- Commissioner (appointed by Governor, Confirmed by Legislature)

- Corrections

- Commissioner (appointed by Governor, Confirmed by Legislature)

- Education and Early Development

- Commissioner (appointed by Governor, Confirmed by Legislature)

- Environmental Conservation

- Commissioner (appointed by Governor, Confirmed by Legislature)

- Family and Community Services

- Commissioner (appointed by Governor, Confirmed by Legislature)

- Fish and Game

- Commissioner (appointed by Governor, Confirmed by Legislature)

- Health

- Commissioner (appointed by Governor, Confirmed by Legislature)

- Labor and Workforce Development

- Commissioner (appointed by Governor, Confirmed by Legislature)

- Law

- Commissioner (appointed by Governor, Confirmed by Legislature)

- Military and Veterans Affairs

- Commissioner (appointed by Governor, Confirmed by Legislature)

- Natural Resources
 - Commissioner (appointed by Governor, Confirmed by Legislature)
- Public Safety
 - Commissioner (appointed by Governor, Confirmed by Legislature)
- Revenue
 - Commissioner (appointed by Governor, Confirmed by Legislature)
- Transportation and Public Facilities
 - Commissioner (appointed by Governor, Confirmed by Legislature)
- Lieutenant Governor (Elected by Popular Vote with Governor)
- Judicial Branch
 - Alaska Court System
 - Judicial Council
 - *Supreme Court (nominated by Judicial Council, appointed by Governor, and subject to voter approval)*
 - **Chief Justice**
 - *Appellate Court (nominated by Judicial Council, appointed by Governor, and subject to voter approval)*
 - *Superior Court (nominated by Judicial Council, appointed by Governor, and subject to voter approval)*
 - *District Court (nominated by Judicial Council, appointed by Governor, and subject to voter approval)*