
Measuring Robustness in Deep Learning Based Compressive Sensing

Mohammad Zalbagi Darestani¹ Akshay S. Chaudhari² Reinhard Heckel^{1,3}

Abstract

Deep neural networks give state-of-the-art accuracy for reconstructing images from few and noisy measurements, a problem arising for example in accelerated magnetic resonance imaging (MRI). However, recent works have raised concerns that deep-learning-based image reconstruction methods are sensitive to perturbations and are less robust than traditional methods: Neural networks (i) may be sensitive to small, yet adversarially-selected perturbations, (ii) may perform poorly under distribution shifts, and (iii) may fail to recover small but important features in an image. In order to understand the sensitivity to such perturbations, in this work, we measure the robustness of different approaches for image reconstruction including trained and un-trained neural networks as well as traditional sparsity-based methods. We find, contrary to prior works, that both trained and un-trained methods are vulnerable to adversarial perturbations. Moreover, both trained and un-trained methods tuned for a particular dataset suffer very similarly from distribution shifts. Finally, we demonstrate that an image reconstruction method that achieves higher reconstruction quality, also performs better in terms of accurately recovering fine details. Our results indicate that the state-of-the-art deep-learning-based image reconstruction methods provide improved performance than traditional methods without compromising robustness.

1. Introduction

Neural networks outperform traditional (e.g., sparsity-based) methods in a variety of image reconstruction tasks across common metrics of image quality. For instance, con-

sider the compressive sensing problem arising in magnetic resonance imaging (MRI), where the goal is to reconstruct a diagnostic quality image using linear under-sampled measurements for accelerating the MRI scans. A large body of literature shows that neural networks can enable higher reconstruction quality and faster reconstruction computations for MRI compared to clinically utilized traditional sparsity-based reconstruction methods (Hammernik et al., 2018; Zbontar et al., 2018; Knoll et al., 2020; Sriram et al., 2020a; Wang et al., 2019; Schlemper et al., 2017; Putzky & Welling, 2019; Arora et al., 2020; Zalbagi Darestani & Heckel, 2020).

However, recent works have raised robustness concerns about neural-network-based image recovery (Cohen et al., 2018; Huang et al., 2018; Antun et al., 2020; Gottschling et al., 2020; Genzel et al., 2020). Specifically, Antun et al. (2020) demonstrated that small, adversarially-selected perturbations in the under-sampled measurements may result in significant reconstruction artifacts. Based on those findings, Antun et al. (2020) and Gottschling et al. (2020) concluded that despite providing worse reconstruction quality than neural networks, traditional sparsity-based compressive sensing methods tend to be more robust to adversarial perturbations.

Moreover, the results from the fastMRI challenge, a competition for improving the performance of image reconstruction systems for accelerated MRI, have shown that while all top performing deep networks yield high scores according to various image quality metrics, there is also a potential to miss small, clinically relevant pathologies (Knoll et al., 2020, Fig. 3), which may lead to false-negative diagnoses.

These findings, however, do not address the question whether the identified robustness concerns are specific to training a network for image reconstruction, or whether un-trained neural networks and traditional un-trained sparsity-based reconstruction methods are similarly sensitive to perturbations.

In addition, it is unknown whether neural networks for image reconstruction are sensitive to various distribution shifts, which can commonly arise in clinical practice. Natural distribution shifts have shown to degrade performance in learning-based systems, for example for classification problems (Recht et al., 2019; Taori et al., 2020; Miller et al., 2021; Yadav & Bottou, 2019) and for question answering models in natural language processing (Miller et al., 2020)).

¹Department of Electrical and Computer Engineering, Rice University ²Department of Radiology and Department of Biomedical Data Science, Stanford University ³Department of Electrical and Computer Engineering, Technical University of Munich. Correspondence to: Mohammad Zalbagi Darestani <mz35@rice.edu>, Akshay S. Chaudhari <akshaysc@stanford.edu>, Reinhard Heckel <rh43@rice.edu>.

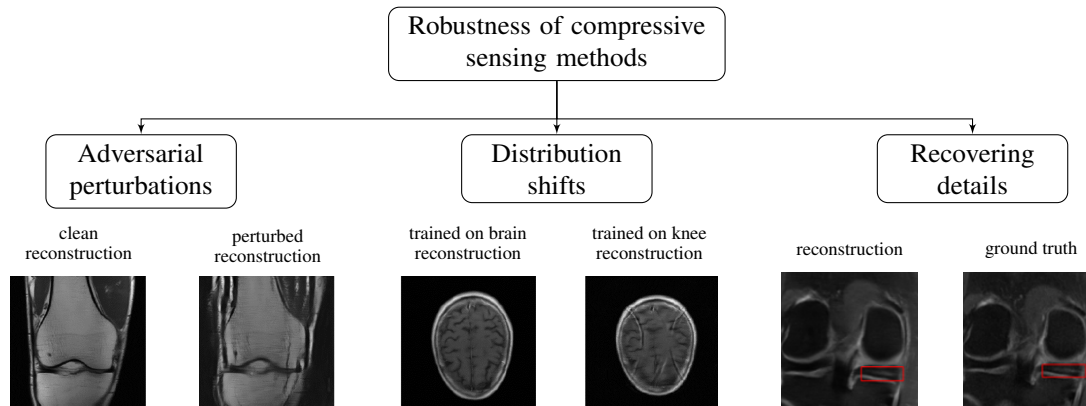


Figure 1: Robustness notions considered in this work. The images are U-net reconstructions from 4x accelerated data. As adversarial perturbation, we select an additive error that has small ℓ_2 -norm but induces a large reconstruction error.

In this work, we study the robustness of three popular families of compressive sensing reconstruction methods for MRI:

- i) **Neural networks trained end to end.** All leading methods in terms of image reconstruction quality of the 2019 and 2020 fastMRI competitions belong to this class of methods. We consider U-net-based recovery (Ronneberger et al., 2015), as it is a simple baseline, and the end-to-end variational network (Sriram et al., 2020a), which is a state-of-the-art method on the fastMRI dataset (Zbontar et al., 2018).
- ii) **Traditional CS methods.** We consider imposing a sparsity prior and image reconstruction with ℓ_1 -norm minimization, which is the leading classical compressive sensing method (Lustig et al., 2007).
- iii) **Un-trained neural networks.** We consider a variation of the Deep Image Prior (Ulyanov et al., 2018) and Deep Decoder (Heckel & Hand, 2019) for MRI introduced in (Zalbagi Darestani & Heckel, 2020), which is a neural network based method, but works without training data.

We study the aforementioned methods with respect to the following three notions of robustness (see Figure 1):

- i) **Small adversarial perturbations.** Small perturbations are selected adversarially to cause a large reconstruction error for a given image and an image reconstruction method. Antun et al. (2020) studied the effect of such perturbations, but only selected them for neural networks trained end-to-end. However, for a comparison among methods, it is essential to find these perturbations separately for each method. While there is no explicit adversary in an MRI scanner (as an MRI scanner is a closed system), studying adversarial perturbations is important since measurement perturbations can be due to scanner-induced artifacts (coil failure, B0

magnet drift, bad gradient shimming, etc.) or patient-induced artifacts (motion, off-resonance, etc.) (Bellon et al., 1986).

- ii) **Robustness to distribution shifts.** Neural networks are typically evaluated by first collecting a set of images and measurements, second partitioning the data into training and test sets, and third training and evaluating the network on the train and test data. Thus, both train and test data are drawn from the same distribution. However, in practice train and test distributions may vary: for example, a network can be trained on data from one set of patients, anatomies, and contrasts, but may be used for varying datasets at test time. For classification, it is well known that distribution shifts are common in practice and have a large impact on performance (Recht et al., 2019), but for image reconstruction methods the effect of distribution shifts is unknown.
- iii) **Robustness in recovering fine details.** Small features in an MRI image (e.g., 10-pixel sized features or even smaller) are often important for accurate diagnostics. Therefore, it is crucial for a reconstruction method to be able to recover such features in the image.

Understanding the robustness of algorithms with respect to these perturbations is important, especially in medical imaging where errors may result in a faulty diagnosis. Towards improving our understanding in this realm, the main contributions of our work and findings of our study are:

- All studied methods—trained and un-trained—are sensitive to small, adversarially-selected perturbations, and the performance loss is not unique to neural networks trained end-to-end. This result is in contrast to that of Antun et al. (2020), which found that “deep learning typically yields unstable methods,” whereas ℓ_1 -minimization methods “are not affected by the perturbation.” Those two results can co-exist because

Antun et al. (2020) found that an adversarial perturbation *selected for a particular neural network* does not affect ℓ_1 -minimization much. In this work (in contrast to Antun et al. (2020)), we also compute adversarial perturbations for ℓ_1 -minimization and show that while those significantly impair the performance of ℓ_1 -minimization, they affect neural networks less.

- We provide the first study of distribution shifts in the context of image reconstruction. Even un-trained methods such as ℓ_1 -minimization are affected by distribution shifts, because their hyper-parameters are tuned on a given distribution. We study three notions of *natural* distribution shifts for accelerated MRI reconstruction: (i) slight shift to a close domain (i.e., same anatomy but a dataset with a different acquisition technique), (ii) anatomy shift (i.e., training on brains and testing on knees), and (iii) adversarially-filtered shifts. Perhaps surprisingly, we find that both un-trained and trained methods are similarly affected by all three types of distribution shifts (see Figure 2 as an example for case (i)), and typically the best performing method is also the best performing method under a distribution shift. For adversarially-filtered shifts, we find that challenging-to-reconstruct-images are difficult to reconstruct for all methods, from which we conclude that some images are naturally difficult to reconstruct.
- Finally, we quantify the recovery of small features in the images i) through introducing artificial small features, and ii) through studying small, clinically relevant features in real data. From studying artificial small feature recovery, we find that each reconstruction method is sensitive to specific regions in an image and faces difficulty in recovering small features in those regions. By studying small pathologic features in real data, we find that traditional CS methods are less robust in recovering small details compared to neural networks. This confirms the intuition that small feature recovery ability should correlate with overall reconstruction performance.

In a nutshell, the take-away of our study is that the deep learning methods that perform best based on reconstruction quality are also best under realistic distribution shifts and for small feature recovery, and we could not find them to be more sensitive to adversarial perturbations than classical methods.

2. Problem setup: Accelerated multi-coil MRI

We study robustness in the context of accelerated multi-coil MRI reconstruction, because this is one of the most popular applications of compressive sensing and an important medical imaging technology.

In multi-coil MRI, n_c multiple radiofrequency coils each

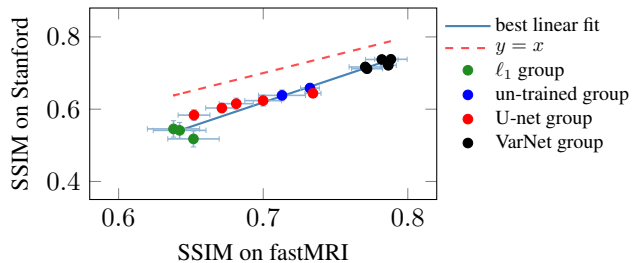


Figure 2: **Reconstruction methods trained on one knee dataset (fastMRI) do not necessarily generalize to another knee dataset (Stanford dataset), if there are differences in how the datasets are obtained.** All of the considered reconstruction methods lose a similar amount of accuracy when evaluated on the Stanford set (through a dataset shift). The word “group” in the legend refers to variants of the respective method and error bars are 95% confidence intervals.

record a measurement that is sensitive to a spatially local anatomical region. We consider multi-coil MRI over simpler single-coil MRI experiments since using multiple coils is common in clinical practice.

The goal of accelerated multi-coil MRI reconstruction is to reconstruct an image $\mathbf{x}^* \in \mathbb{C}^N$ from a set of measurements (often called k -space measurements) obtained as

$$\mathbf{y}_i = \mathbf{M}\mathbf{F}\mathbf{S}_i\mathbf{x}^* + \text{noise} \in \mathbb{C}^M, \quad i = 1, \dots, n_c.$$

In the above equation, \mathbf{S}_i is a complex-valued position-dependent coil sensitivity map, that is applied through element-wise multiplication to the image \mathbf{x}^* , \mathbf{F} implements the 2D discrete Fourier transform, and \mathbf{M} is a mask that implements under-sampling of k -space data.

For all experiments, we use the fastMRI dataset (Zbontar et al., 2018), designed for training and evaluating deep-learning-based MRI reconstruction methods. The fastMRI dataset consists of fully-sampled measurements (i.e., taken with an identity mask $\mathbf{M} = \mathbf{I}$) of knees taken with $n_c = 15$ coils, and of brains taken with a varying number of coils. The dataset also contains reference images that are obtained by reconstructing the coil images from each full coil measurement as $\hat{\mathbf{x}}_i = \mathbf{F}^{-1}\mathbf{y}_i$ and then combining them via the root-sum-of-squares (RSS) algorithm to a final single image: $\hat{\mathbf{x}} = \sqrt{\sum_{i=1}^{n_c} |\hat{\mathbf{x}}_i|^2}$. Here, $|\cdot|$ and $\sqrt{\cdot}$ denote element-wise absolute value and squared root operations. Alternatively, one could use SENSE (Roemer et al., 1990), a signal-to-noise ratio optimal method, to combine coil images.

To under-sample k -space measurements (for acceleration), we employ a standard 1D mask (random or equi-spaced vertical or horizontal lines in the frequency domain), which is the default in the fastMRI challenge. We consider 4x acceleration throughout the paper as this is one of the acceleration factors considered in the fastMRI challenge, although 2x

acceleration is often used in clinical practice (Deshmane et al., 2012). For evaluation, we compare to the reference images reconstructed from the full k -space.

3. Image reconstruction methods

We consider three families of image reconstruction methods: i) trained neural networks, ii) traditional sparsity-based CS methods, and iii) un-trained neural networks. In this section, we provide a brief overview of each method.

Trained neural networks. Convolutional neural networks are trained either to map the measurement directly to an artifact-free image, or to map from a coarse least-squares reconstruction from the under-sampled measurement to an artifact-free image.

Let $\{(\mathbf{x}_1, \mathbf{y}_1), \dots, (\mathbf{x}_n, \mathbf{y}_n)\}$ be a training set consisting of pairs of target image \mathbf{x}_j and a under-sampled measurement \mathbf{y}_j . The measurement in our setup consists of the physical k -space measurements from multiple receiver coils. A network f_θ with parameters (weights) θ takes as input the measurement and generates an image. The network is typically trained by minimizing the loss

$$\mathcal{L}(\theta) = \frac{1}{n} \sum_{j=1}^n \|\mathbf{x}_j - f(\mathbf{y}_j)\|_2^2,$$

which yields the trained method $f_{\hat{\theta}}$. At test time, the network generates an image as $f_{\hat{\theta}}(\mathbf{y})$ based on the measurement \mathbf{y} .

The best performing methods in the fastMRI competition are all trained networks, and yield significant improvements over classical methods (Putzky & Welling, 2019; Sriram et al., 2020b;a). We consider two methods of this type: U-net (Ronneberger et al., 2015) based reconstruction (Jin et al., 2017), as this is a simple baseline, and the end-to-end variational network (VarNet) (Sriram et al., 2020a), as this is the current state-of-the-art network.

U-net based reconstruction simply trains a U-net end-to-end on the training set to map the under-sampled measurement to the original image. VarNet-based reconstruction (Sriram et al., 2020a) is more intricate, with a more complicated network including coil sensitivity estimation, image-domain refinement, and data consistency steps, but conceptually similar as it is also trained end-to-end.

Traditional compressive sensing methods. Traditional compressive sensing methods are sparsity based and either impose a sparse representation by minimizing the ℓ_1 -norm, or perform total-variation norm minimization. Traditional CS methods are popular for MRI reconstruction (Chen & Huang, 2012; Block et al., 2007; Lustig et al., 2007), and are used commonly in clinical practice. ℓ_1 -norm minimization relies on assuming sparsity in a transform domain. We impose Wavelet sparsity following common practice

in MRI (Chen & Huang, 2012; Lustig et al., 2007). Sparsity-based reconstruction recovers an image by minimizing the (convex) loss

$$\mathcal{L}_1(\mathbf{x}) = \sum_{i=1}^{n_c} \left\| \mathbf{y}_i - \mathbf{A}\hat{\mathbf{S}}\mathbf{x} \right\|_2^2 + \lambda \|\mathbf{H}\mathbf{x}\|_1. \quad (1)$$

Here, \mathbf{H} denotes the 2D Wavelet transform and $\hat{\mathbf{S}}$ are coil sensitivity maps estimated from the under-sampled measurement using the ESPIRiT method (Uecker et al., 2014). Sparsity-based approaches provably succeed provided that the signal is sparse (Candès et al., 2006; Lustig et al., 2007).

Un-trained neural networks. Perhaps surprisingly, convolutional neural networks can regularize inverse problems without training, as has first been demonstrated by the Deep Image Prior (Ulyanov et al., 2018) for denoising, super-resolution, and inpainting problems.

Such un-trained networks are also powerful for compressive sensing (Veen et al., 2018), and simple convolutional architectures such as the Deep Decoder (Heckel & Hand, 2019) work well in practice. Arora et al. (2020) and Zalbagi Darestani & Heckel (2020) used variants of the deep decoder for multi-coil MRI and achieved noticeable improvements over traditional CS methods. Zalbagi Darestani & Heckel (2020) further demonstrated that un-trained networks even perform similar to the U-net—the trained approach mentioned earlier. Un-trained neural networks provably recover smooth signals from few measurements (Heckel & Soltanolkotabi, 2020a).

In a nutshell, an un-trained network recovers an image by first fitting a randomly initialized, image generating network to a measurement, and then taking the network output as the recovered image. The network is not trained, and uses the structure of the network alone as a prior for the images.

We finally note that there is a fourth class of neural network-based reconstruction methods, pioneered by (Bora et al., 2017), which impose a learned prior (Bora et al., 2017; Hand & Voroninski, 2018; Asim et al., 2020; Daras et al., 2021). At the time of writing, this class of neural network-based reconstruction methods has not been applied to MRI, and was therefore not included in our study. In the meantime, Kelkar et al. (2021) applied this method to MRI images, and it would be interesting to include this class of methods into further robustness studies.

4. Small, adversarially-selected perturbations

Adversarial perturbations are often studied to evaluate the robustness of machine learning systems. For classification problems, there exists a large body of literature on the sensitivity of neural networks to adversarial perturbations (Goodfellow et al., 2015; Szegedy et al., 2014; Moosavi-Dezfooli et al., 2017). These works show that the predicted label for

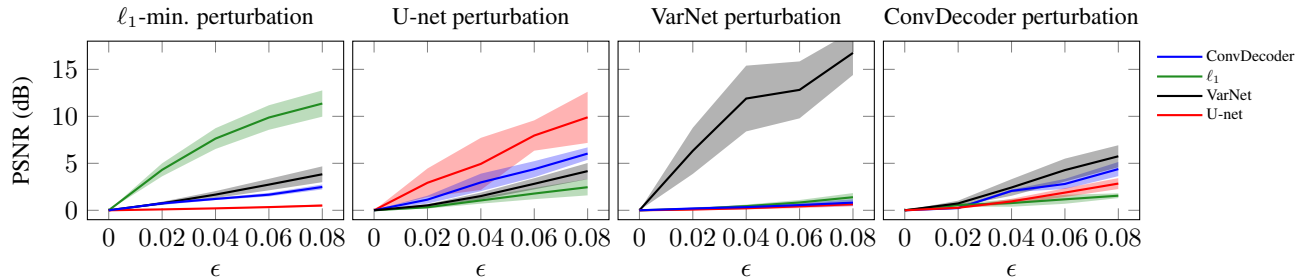


Figure 3: **Both trained and un-trained reconstruction methods are vulnerable to small adversarial perturbations.** Performance loss as a function of the perturbation strength, $\epsilon = \frac{\|\text{perturbation}\|_2}{\|k\text{-space}\|_2}$, for all methods. In each plot, the perturbations are obtained by attacking one method (specified in the plot title), and are applied to all methods. The results are averaged over 10 randomly-chosen proton density knee images from the fastMRI validation set. Shaded areas denote 95% confidence intervals.

a test image can be altered by adding a small perturbation to that image. This observation is attributed to test images lying close to a learned decision boundary, and thus slightly altering the image allows to cross this boundary.

The study of adversarial robustness in classification is motivated by the concept of an adversary that may alter the input of a machine learning system with imperceptible perturbations. In image reconstruction problems, there is typically no such adversary, but studying adversarial robustness in image reconstruction methods is important as it enables certifying worst-case robustness.

The study of small perturbations for image reconstruction problems was initiated by Cohen et al. (2018); Huang et al. (2018); Antun et al. (2020). Antun et al. (2020) generated these perturbations for a given network and image through optimization and concluded that “deep learning for inverse problems is typically unstable” because of the impact of adversarial perturbations. In a recent subsequent work, Genzel et al. (2020) unrolled a classical method, total variation minimization (TV), and generated small perturbations for this unrolled network in the same way as Antun et al. (2020) did, and found “superior robustness of the learned reconstruction schemes [a U-net] over TV.” Thus there is a disagreement on whether neural network or classical methods are more sensitive to adversarial perturbations.

In this section we study small adversarial perturbations, but in contrast to those previous works, (i) we include un-trained neural networks in our study, (ii) we include the state-of-the-art method VarNet beyond the baseline trained method U-net, and (iii) we introduce a method to generate small adversarial perturbations for un-trained methods without unrolling and thus without treating un-trained methods as a neural network.

Our experimental setup is as follows. We consider 10 randomly-chosen proton-density-weighted knee MRI images from the fastMRI validation set. For each image, we generate a small perturbation added to the measurement

(k -space) of a given ℓ_2 norm. For ℓ_1 -minimization and the ConvDecoder, we generate adversarial perturbations through a new optimization-based method detailed in Appendix A.1. For U-net- and VarNet-based reconstruction, we generate perturbations with Projected Gradient Descent (PGD) as described in Appendix A.1. We then apply each perturbation to each image, and reconstruct with all four methods. Figure 3 shows the results and the supplement contains reconstructions examples.

Our experiment shows that **both trained and un-trained methods are sensitive to small adversarial perturbations**. Recall that (Antun et al., 2020; Gottschling et al., 2020) found that perturbations adversarially selected for neural networks only mildly affect sparsity-based methods, and concluded that traditional CS methods are more robust than trained methods to such small perturbations. In contrast, our results show that while adversarially-selected perturbation for a trained network (e.g., U-net) have a relatively mild impact on ℓ_1 -norm minimization, the converse is also true: perturbations found for ℓ_1 -norm minimization have a significant effect for ℓ_1 -minimization, but only a mild effect on U-net’s performance. Thus, both methods are vulnerable to perturbations specifically tailored to them.

We note that at first sight, the findings in Figure 3 suggest that ConvDecoder is slightly more robust than both U-net and ℓ_1 -based reconstruction, which in turn is slightly more robust than VarNet-based reconstruction. However, it is not possible to draw such absolute comparisons, simply because in order to find adversarial perturbations, we solve a non-convex optimization problem with a numerical method (PGD), and because of the non-convexity, we are not guaranteed to find a worst-case perturbation. It could be that for ℓ_1 -minimization we find a worst-case perturbation but for U-net we do not. This issue is inherent to the problem setup and applies to all current methods for finding adversarial perturbations, including those from (Antun et al., 2020; Genzel et al., 2020).

5. Distribution shifts

While robustness to distribution shifts has gained lots of attention over the past few years for image classification tasks (Recht et al., 2019; Ovadia et al., 2019; Taori et al., 2020; Hendrycks et al., 2020), there is little understanding on the effect of distribution shifts in image reconstruction problems. In particular, we are not aware of a systematic study on distribution shifts in accelerated MRI reconstruction. Understanding the robustness to distribution shifts in image reconstruction problems is important, since given the paucity of training datasets, it may be common to train a method on one patient population, but use the trained model on another; or train on the machine of one manufacturer and test on the machine of another, etc.

In this section, we study three variants of distribution shifts: (i) A dataset shift from the fastMRI-knee dataset to a knee dataset from mridata.org that we call the Stanford set, (ii) an anatomy shift from brain images to knee images and vice versa, and finally (iii) an adversarially-filtered shift to evaluate different models on a set of difficult-to-reconstruct images, inspired by adversarially-filtered shifts for classification introduced by Hendrycks et al. (2021).

We note all methods, even un-trained ones are affected by distribution shifts, because un-trained methods have hyper-parameters (such as the penalty λ in ℓ_1 -minimization), that are tuned on a given distribution. Moreover, we consider multiple variants of each method (e.g., VarNet with different hyper-parameters) in order to obtain a larger variety of models. The details of each reconstruction method and its variants are provided in the supplement.

Our overarching finding is that the performance drop under each of the distribution shifts is similar for all considered trained and un-trained methods. Thus, out-of-distribution performance is strongly correlated with in-distribution performance. We found that surprising because un-trained methods depend only very mildly on the distribution through hyper-parameter tuning. As a consequence, the advantage achieved by a given method over another typically retains this advantage even under distribution shifts.

This complements an emerging line of works starting with (Recht et al., 2019) that finds a strong correlation between out-of-distribution and in-distribution generalization for a large variety of datasets and models for image classification problems (Miller et al., 2021; Taori et al., 2020; Yadav & Bottou, 2019) and even for question-answering models (Miller et al., 2020). Our results, presented next, indicate that this relation persists even in the context of image recovery, and even when including un-trained methods.

5.1. Dataset shift

We start with studying the performance of models trained or tuned on the fastMRI knee dataset, but tested on a different

knee dataset. Specifically, we test on the Stanford dataset retrieved by collecting all available 18 knee volumes from mri-data.org (Epperson et al., 2013). The Stanford set contains knees of the same size as the fastMRI images (320×320), but the dataset is different in that i) the frequency-domain representation of the Stanford set has a 320×320 resolution as opposed to 640×360 on average for fastMRI, ii) the slice thickness is lower for the Stanford dataset (0.6mm vs 3mm), resulting in lower SNR, and iii) the Stanford set is acquired using 3D MRI (single volumetric MRI measurement) vs. 2D fastMRI (multiple slice-wise measurements), resulting in varying blurring and SNR. All those slight differences induce a clinically relevant distribution shift.

Since all of the Stanford set samples are fat-suppressed images, when considering the shift from fastMRI to the Stanford set, we only consider fat-suppressed images from the fastMRI dataset as well. Our main finding is that **all reconstruction methods perform worse on the new MRI samples, but the absolute performance drop is similar. In-distribution and out-distribution performances are linearly correlated.** Figure 2 shows average SSIM values when training on the fastMRI dataset and evaluating on both fastMRI and Stanford datasets. Reconstruction examples are provided in the supplement.

We finally remark that when naively applied, the state-of-the-art VarNet is particularly sensitive to this dataset shift, in that the frequency resolution changes in the Stanford set and this affects VarNet as it is based on estimating the unknown k -space. This is not reflected in Figure 2, since we manually increased the resolution of Stanford set data points for VarNet to have a fair comparison among all methods with respect to only the dataset shift (and not resolution shift). For an example of VarNet reconstruction without such *resolution fix*, we refer to the supplement.

5.2. Anatomy shift

We next consider an anatomy shift where we move from a certain image type (knees) to another (brains), and vice versa. To understand the robustness to anatomy shifts, we perform the following experiment: We train U-net and VarNet on the whole knee training set and also optimize the hyper-parameters of the ConvDecoder and ℓ_1 -norm minimization on that set. Then we test all methods on the brain validation set. We conversely train on brain MRIs and test on knee MRIs.

Our main finding from the corresponding results in Figure 4 is that, again, **all reconstruction methods perform worse on the new anatomy, but the absolute performance drop is similar.** Note that there is more variance in the scores for knee images since there are two considerably different knee image types. Those different types arise from different contrasts and different MRI sequences for obtaining the measurements. For the brain images, there are 5 categories

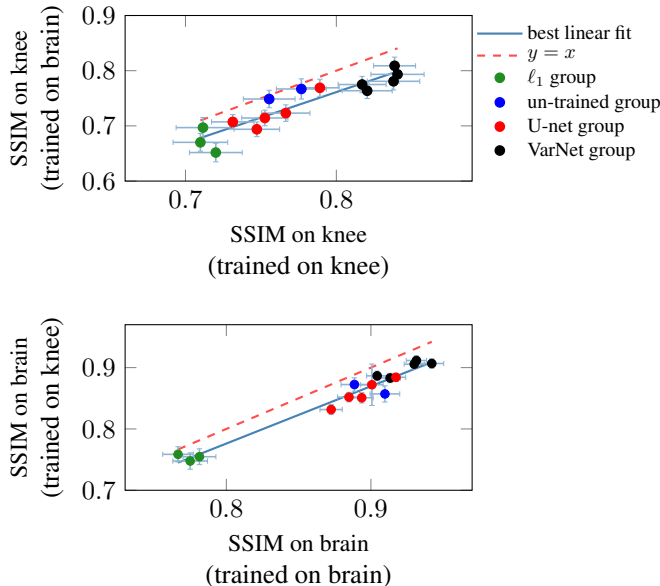


Figure 4: **Both trained and un-trained methods are not robust to an anatomy distribution shift.** Validation results for a group of 100 brain images and a group of 100 knee images from the fastMRI validation set. x and y axes denote SSIM scores given the training domain for trained neural networks and hyper-parameter learning domain for un-trained methods.

of images which are close distribution-wise (i.e., similar contrasts), and most images belong to one of the categories. As a final remark, Figure 5 shows that for some images, trained neural networks generate aliasing artifacts in their reconstruction caused by the distribution shift. The results of the transfer track of the fastMRI 2020 challenge (Muckley et al., 2021, Fig. 3) which considers a shift from one scanner to another, also showed that such shifts can induce visible artifacts in reconstructions. Thus, the forward reconstruction model (k -space to image space) for trained neural networks is conditioned on the learned distribution. Consequently, such trained networks may not learn a scan-agnostic reconstruction model and that their generalizability to overcome aliasing artifacts relies explicitly on the distribution they are trained on (knees in the case of Figure 5).

5.3. Adversarially-filtered shift

We finally study the performance on images that are particularly difficult to reconstruct as measured by their reconstruction error, in order to understand whether any of the considered methods degrade or shine on such naturally difficult examples. This experiment is inspired by the study of “adversarially-filtered” data in image classification. Such points refer to a set of *challenging* samples that cause a significant performance loss to most of the classifiers, and was introduced by Hendrycks et al. (2021) as ImageNet-A.

ImageNet-A consists of all ImageNet (Deng et al., 2009) images that ResNet-50 misclassifies.

Here, we create fastMRI-A, a subset of the fastMRI dataset that contains the most *challenging* to reconstruct samples, and test all methods on this set of difficult images.

We construct the fastMRI-A (A for adversarial) dataset as follows. We take 5 mid-slice images from each of the 199 knee validation volumes of the fastMRI dataset. This results in a set of 995 images. From this set, we select the images that result in the 100 lowest SSIM scores (bottom 10%) when reconstructing them via the i-RIM architecture (Putzky & Welling, 2019). We use the i-RIM architecture, a fifth reconstruction method, because this network is one of the best-performing methods in the fastMRI competition, and the winner of the single-coil challenge track. Note that for our experiment, it is important not to choose the difficult examples with any of the methods we study (i.e., VarNet, U-net, ConvDecoder, and ℓ_1 -norm minimization), because the goal is to understand whether challenging samples for one method are also challenging for other methods. We include a few examples from fastMRI-A and their corresponding 4x-accelerated reconstructions in the supplementary materials.

Figure 6 shows the performance of the four methods we consider on the fastMRI-A dataset. We plot the performance on those images as a function of the performance on the fastMRI dataset, in order to compare the relative performance change caused by the distribution shift. For testing these methods on the fastMRI-A dataset, we used the same set of validation images that we chose in Section 5.2.

There is a constant gap between the linear interpolation shown in Figure 6 and $y = x$ which demonstrates that all four reconstruction methods are equally sensitive to a shift to naturally challenging samples. Thus, we again find (see Figure 6) **that the performance of all methods drops by a similar amount under this distribution shift—meaning that neither un-trained nor trained methods degrade or shine on the difficult-to-reconstruct images.** This establishes that there are difficult images to reconstruct, on which all methods perform worse than on an average image.

Moreover we find that **challenging images are naturally difficult to reconstruct**, since both trained and un-trained methods are equally prone to this shift. Our hypothesis for this natural difficulty is that fastMRI-A samples contain more high-frequency information compared to an average fastMRI example, and thus are harder to reconstruction because less high-frequency information is available in the measurements. The experiments in the supplement confirm this hypothesis.

6. Recovering small features in an image

For medical applications, it is important to recover small details of an image, because such details can be critical for

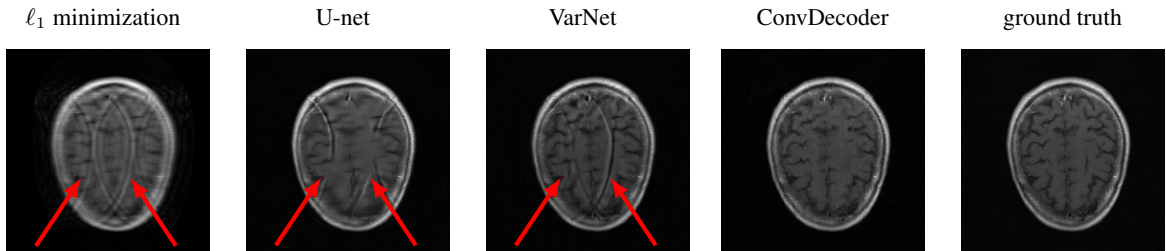


Figure 5: **Anatomy shift from knee to brain.** End-to-end variational network (VarNet) and U-net cannot remove under-sampling aliasing artifacts for some images when being trained on knee and tested on brain. ℓ_1 -norm minimization (an un-trained method), also induces aliasing artifacts (irrespective of the distribution shift) similar to most of the traditional CS methods. The ConvDecoder (an un-trained network) is more stable in this setup.

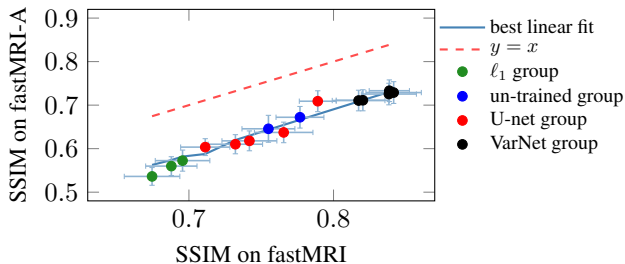


Figure 6: **Challenging data points are naturally challenging and lower scores for these data points are not due to learning.** Trained and un-trained methods perform equally poorly on these samples as there is a constant gap between $y = x$ and the best linear fit.

a diagnosis. Figure 2b in (Knoll et al., 2020) shows that for a given image in the fastMRI challenge, all participating trained neural networks fail to recover a small but clinically relevant detail (a tear of the meniscus, which may require surgery for the patients).

In this section, we study the ability of the four methods to recover such small details. We first propose a simple framework based on artificial features in order to determine whether there is any location dependency for a given reconstruction method when recovering the small feature. Furthermore, we evaluate the ability to recover small features on a set of 22 annotated fastMRI knee images which contain real-world pathologies.

Artificial feature recovery. Our proposed framework for small feature recovery is as follows. We take a small window consisting of 3×3 pixels, fill it with the maximum value of a pixel in the image and slide it through the image to have this spot in different locations. We then generate a measurement from this perturbed image and perform the reconstruction using the four mentioned methods. We then measure the error in reconstructing this feature only (i.e., we compute the Mean-Squared Error (MSE) for the 3×3 region). We performed this experiment for every location in a test image to understand whether there is a location dependency for different methods.

The results, displayed in Figure 7, show that **different reconstruction methods are sensitive to errors at different regions in the image.** In Figure 7, we see that ℓ_1 -minimization and VarNet perform worse in dark regions of the image (note that the feature itself is bright). Note that this location dependency is not due to learning, in that both trained and un-trained methods have location dependent recovery performance.

Real-world feature recovery. Next, we study natural features by performing an evaluation on a set of 22 annotated images (Cheng et al., 2020) from the fastMRI knee dataset which contain real-world pathologies. We study the performance of those methods in recovering the small features by measuring the MSE only for the region in which the feature is located. The results, depicted in Figure 8, show that the ranking of the methods in terms of small-feature-recovery performance is VarNet > U-net > ConvDecoder > ℓ_1 -norm minimization, which coincides with the ranking in terms of overall reconstruction quality. The figure also shows that the reconstruction quality is perfectly linearly correlated with accurate recovery of fine details, which is intuitively expected.

With regards to prior works on small feature recovery, Cheng et al. (2020) made the first step toward this direction by proposing an optimization framework to synthesize small features for trained networks, by generating different random perturbations of small spatial extent and selecting the worst one for a given method. However, we found it difficult to build a comparison among different methods based on such framework, mainly because of the reasons we discussed for optimization-based perturbations in Section 4 (i.e., (i) worst-case features are not guaranteed, and (ii) hyper-parameters are different across methods).

7. Conclusion

Deep-learning-based image reconstruction methods yield high-quality reconstructions from under-sampled data. However, recent works raised the concern that the improvements in reconstruction quality come at a loss in robustness. In

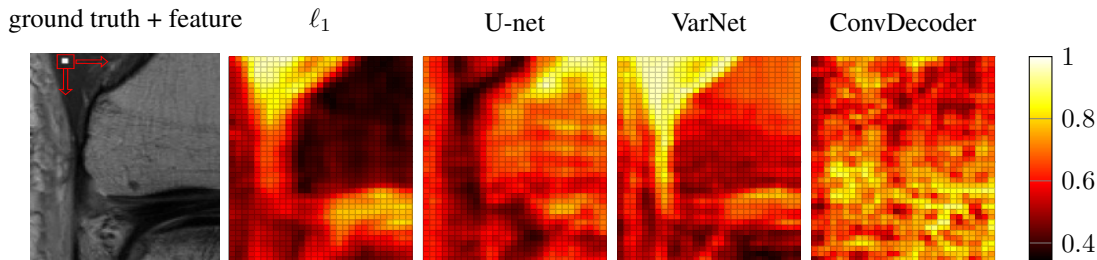


Figure 7: Reconstruction heat maps for the end-to-end variational network (VarNet), U-net, ConvDecoder, and ℓ_1 -norm minimization. Each heat map shows the information loss at different locations of an image (i.e., the MSE for each 3×3 region) across the image. The left-most image on the top row is the ground-truth image on which we slide a window of fixed information. All heat maps are normalized to the interval $[0, 1]$.

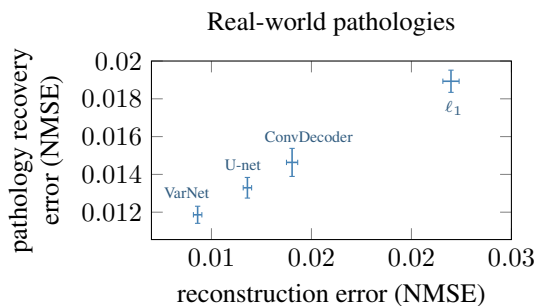


Figure 8: **Reconstruction accuracy is correlated with robustness.** Small feature recovery error based on reconstruction accuracy (SSIM) computed on a set of 22 fastMRI images which contain natural small features. The state-of-the-art VarNet performs best both in terms of reconstruction quality and in terms of small feature recovery error.

this paper, we have studied the robustness (i) against small adversarial perturbations, (ii) to distribution shifts, and (iii) in recovering fine details, for three families of MRI reconstruction methods: trained deep networks, un-trained deep networks, and classical sparsity-based approaches.

We find that both deep-learning-based as well as classical sparsity-based image reconstruction methods are sensitive to small, adversarially-selected perturbations.

Moreover, the reconstruction quality is correlated with small feature recovery, and hence improving overall reconstruction performance also improves performance for recovering fine details of an image.

Finally, we find that the performance drop under each of three different realistic distribution shifts is similar for all considered trained and un-trained methods. The out-of-distribution accuracy is linearly correlated with the in-distribution accuracy, and the performance ranking of the methods typically remains accurate even under distribution shifts. This is perhaps surprising, because un-trained methods only depend on the training distribution through hyper-parameter tuning.

To improve performance in practice, it is important overcome the performance drop due to distribution shifts: Dis-

tribution shifts occur in practice and incur a significant loss in performance. For un-trained methods, very little data for hyper-parameter tuning is needed and thus the performance gap may be closed via access to only few images of the new domain, and it might even be possible to do hyper-parameter tuning on a single under-sampled measurement (Zalbagi Darestani & Heckel, 2020).

For trained methods, this problem might be addressed through larger and more diverse datasets, or through data-augmentation (Fabian et al., 2021). However, distribution shifts are difficult to overcome: Taori et al. (2020) finds for image classification that robustness enhancing methods—apart from training on large and more diverse datasets—help little for natural distribution shifts, and conclude that “distribution shifts arising in real data are currently an open research problem.”

In a nutshell, the take-away of our study is that the deep learning methods that perform best based on reconstruction quality are also best under realistic distribution shifts and for small feature recovery, and we could not find them to be more sensitive to adversarial perturbations.

Reproducibility

The code to reproduce all results in this paper is available at <https://github.com/MLI-lab/Robustness-CS>.

Acknowledgment

M. Zalbagi Darestani and R. Heckel are (partially) supported by NSF award IIS-1816986, and R. Heckel acknowledges support of the IAS at TUM and the DFG. R. Heckel also thanks Ludwig Schmidt for discussions on distribution shifts, and particular on linear fit phenomena. A. Chaudhari is supported by National Institutes of Health (NIH) grants NIH R01 AR063643, R01 EB002524, K24 AR062068, P41 EB015891, received research support from GE Healthcare and Philips, provided consulting services to Skope MR Inc, Subtle Medical, Image Analysis Group, Edge Analytics, Culvert Engineering, and Chondrometrics GmbH, and is a share-holder of Subtle Medical, LVIS Corporation, and Brain Key.

References

- Antun, V., Renna, F., Poon, C., Adcock, B., and Hansen, A. C. On instabilities of deep learning in image reconstruction and the potential costs of AI. In *Proceedings of the National Academy of Sciences (PNAS)*, 2020.
- Arora, S., Roeloffs, V., and Lustig, M. Untrained modified deep decoder for joint denoising parallel imaging reconstruction. In *International Society for Magnetic Resonance in Medicine Annual Meeting*, 2020.
- Asim, M., Daniels, M., Leong, O., Ahmed, A., and Hand, P. Invertible generative models for inverse problems: Mitigating representation error and dataset bias. In *International Conference on Machine Learning (ICML)*, pp. 399–409, 2020.
- Bellon, E. M., Haacke, E. M., Coleman, P. E., Sacco, D. C., Steiger, D. A., and Gangarosa, R. E. MR artifacts: A review. In *American Journal of Roentgenology*, pp. 1271–1281, 1986.
- Block, K. T., Uecker, M., and Frahm, J. Undersampled radial MRI with multiple coils. Iterative image reconstruction using a total variation constraint. In *Magnetic Resonance in Medicine: An Official Journal of the International Society for Magnetic Resonance in Medicine*, pp. 1086–1098, 2007.
- Bora, A., Jalal, A., Price, E., and Dimakis, A. G. Compressed sensing using generative models. In *International Conference on Machine Learning (ICML)*, pp. 537–546, 2017.
- Candès, E. J., Romberg, J., and Tao, T. Robust uncertainty principles: Exact signal reconstruction from highly incomplete frequency information. In *IEEE Transactions on Information Theory*, pp. 489–509, 2006.
- Chen, C. and Huang, J. Compressive sensing MRI with wavelet tree sparsity. In *Advances in Neural Information Processing Systems (NeurIPS)*, pp. 1115–1123, 2012.
- Cheng, K., Calivá, F., Shah, R., Han, M., Majumdar, S., and Pedoia, V. Addressing the false negative problem of deep learning MRI reconstruction models by adversarial attacks and robust training. In *Proceedings of Machine Learning Research*, 2020.
- Cohen, J. P., Luck, M., and Honari, S. Distribution matching losses can hallucinate features in medical image translation. In *International Conference on Medical Image Computing and Computer-Assisted Intervention*, pp. 529–536, 2018.
- Daras, G., Dean, J., Jalal, A., and Dimakis, A. G. Intermediate layer optimization for inverse problems using deep generative models. In *International Conference on Machine Learning (ICML)*, 2021.
- Deng, J., Dong, W., Socher, R., Li, L., Li, K., and Fei-Fei, L. ImageNet: A large-scale hierarchical image database. In *Conference on Computer Vision and Pattern Recognition (CVPR)*, 2009.
- Deshmane, A., Gulani, V., Griswold, M. A., and Seiberlich, N. Parallel MR imaging. In *Journal of Magnetic Resonance Imaging*, pp. 55–72, 2012.
- Epperson, K., Sawyer, A., Lustig, M., Alley, M., and Uecker, M. Creation of fully sampled MR data repository for compressed sensing of the knee. In *Proceedings of the 22nd Annual Meeting for Section for Magnetic Resonance Technologists*, 2013.
- Fabian, Z., Heckel, R., and Soltanolkotabi, M. Data augmentation for deep learning based accelerated MRI reconstruction with limited data. In *International Conference on Machine Learning (ICML)*, 2021.
- Genzel, M., Macdonald, J., and März, M. Solving inverse problems with deep neural networks – robustness included? In *arXiv :2011.04268 [cs.LG]*, 2020.
- Goodfellow, I. J., Shlens, J., and Szegedy, C. Explaining and harnessing adversarial examples. In *International Conference on Learning Representations (ICLR)*, 2015.
- Gottschling, N. M., Antun, V., Adcock, B., and Hansen, A. C. The troublesome kernel: Why deep learning for inverse problems is typically unstable. In *arXiv: 2001.01258 [cs.LG]*, 2020.
- Hammernik, K., Klatzer, T., Kobler, E., Recht, M. P., Sodickson, D. K., Pock, T., and Knoll, F. Learning a variational network for reconstruction of accelerated MRI data. In *Magnetic Resonance in Medicine*, pp. 3055–3071, 2018.
- Hand, P. and Voroninski, V. Global guarantees for enforcing deep generative priors by empirical risk. In *Conference On Learning Theory*, pp. 970–978, 2018.
- Heckel, R. and Hand, P. Deep decoder: Concise image representations from untrained non-convolutional networks. In *International Conference on Learning Representations (ICLR)*, 2019.
- Heckel, R. and Soltanolkotabi, M. Compressive sensing with un-trained neural networks: Gradient descent finds the smoothest approximation. In *International Conference on Machine Learning (ICML)*, 2020a.
- Heckel, R. and Soltanolkotabi, M. Denoising and regularization via exploiting the structural bias of convolutional generators. In *International Conference on Learning Representations (ICLR)*, 2020b.

- Hendrycks, D., Zhao, K., Basart, S., Steinhardt, J., and Song, D. Natural adversarial examples. In *Conference on Computer Vision and Pattern Recognition (CVPR)*, 2021.
- Hendrycks, D. et al. The many faces of robustness: A critical analysis of out-of-distribution generalization. In *arXiv: 2006.16241 [cs.CV]*, 2020.
- Huang, Y., Würfl, T., Breininger, K., Liu, L., Lauritsch, G., and Maier, A. Some investigations on robustness of deep learning in limited angle tomography. In *International Conference on Medical Image Computing and Computer-Assisted Intervention*, pp. 145–153, 2018.
- Jin, K. H., McCann, M. T., Froustey, E., and Unser, M. Deep convolutional neural network for inverse problems in imaging. In *IEEE Transactions on Image Processing*, pp. 4509–4522, 2017.
- Kelkar, V. A., Bhadra, S., and Anastasio, M. A. Compressible latent-space invertible networks for generative model-constrained image reconstruction. In *IEEE Transactions on Computational Imaging*, pp. 209–223, 2021.
- Kingma, D. P. and Ba, J. Adam: A method for stochastic optimization. In *International Conference on Learning Representations (ICLR)*, 2015.
- Knoll, F., Murrell, T., Sriram, A., Yakubova, N., Zbontar, J., Rabbat, M., Defazio, A., Muckley, M. J., Sodickson, D. K., Zitnick, C. L., et al. Advancing machine learning for MR image reconstruction with an open competition: Overview of the 2019 fastMRI challenge. In *Magnetic Resonance in Medicine*, 2020.
- Lustig, M., Donoho, D., and Pauly, J. M. Sparse MRI: The application of compressed sensing for rapid MR imaging. In *Magnetic Resonance in Medicine: An Official Journal of the International Society for Magnetic Resonance in Medicine*, pp. 1182–1195, 2007.
- Miller, J., Krauth, K., Recht, B., and Schmidt, L. The effect of natural distribution shift on question answering models. In *International Conference on Machine Learning (ICML)*, 2020.
- Miller, J., Taori, R., Raghunathan, A., Sagawa, S., Wei Koh, P., Shankar, V., Liang, P., Carmon, Y., and Schmidt, L. Accuracy on the line: On the strong correlation between out-of-distribution and in-distribution generalization. In *International Conference on Machine Learning (ICML)*, 2021.
- Moosavi-Dezfooli, S., Fawzi, A., Fawzi, O., and Frossard, P. Universal adversarial perturbations. In *Proceedings of the IEEE Conference on Computer Vision and Pattern Recognition (CVPR)*, pp. 1765–1773, 2017.
- Muckley, M. J., Riemenschneider, B., Radmanesh, A., Kim, S., Jeong, G., Ko, J., Jun, Y., Shin, H., Hwang, D., Mostapha, M., et al. State-of-the-art machine learning MRI reconstruction in 2020: Results of the second fastMRI challenge. In *IEEE Transactions on Medical Imaging*, 2021.
- Ovadia, Y. et al. Can you trust your model’s uncertainty? Evaluating predictive uncertainty under dataset shift. In *Advances in Neural Information Processing Systems (NeurIPS)*, pp. 13991–14002, 2019.
- Putzky, P. and Welling, M. Invert to learn to invert. In *Advances in Neural Information Processing Systems (NeurIPS)*, pp. 444–454, 2019.
- Recht, B., Roelofs, R., Schmidt, L., and Shankar, V. Do ImageNet classifiers generalize to ImageNet? In *International Conference on Machine Learning (ICML)*, pp. 5389–5400, 2019.
- Roemer, P. B., Edelstein, W. A., Hayes, C. E., Souza, S. P., and Mueller, O. M. The NMR phased array. In *Magnetic Resonance in Medicine*, pp. 192–225, 1990.
- Ronneberger, O., Fischer, P., and Brox, T. U-net: Convolutional networks for biomedical image segmentation. In *International Conference on Medical Image Computing and Computer-Assisted Intervention*, pp. 234–241, 2015.
- Schlemper, J., Caballero, J., Hajnal, J. V., Price, A., and Rueckert, D. A deep cascade of convolutional neural networks for MR image reconstruction. In *International Conference on Information Processing in Medical Imaging*, pp. 647–658, 2017.
- Sriram, A., Zbontar, J., Murrell, T., Defazio, A., Zitnick, C. L., Yakubova, N., Knoll, F., and Johnson, P. End-to-end variational networks for accelerated MRI reconstruction. In *International Conference on Medical Image Computing and Computer-Assisted Intervention*, pp. 64–73, 2020a.
- Sriram, S., Zbontar, J., Murrell, T., Zitnick, C. L., Defazio, A., and Sodickson, D. K. Grappanet: Combining parallel imaging with deep learning for multi-coil MRI reconstruction. In *IEEE/CVF Conference on Computer Vision and Pattern Recognition (CVPR)*, pp. 14315–14322, 2020b.
- Szegedy, C., Zaremba, W., Sutskever, I., Bruna, J., Erhan, D., Goodfellow, I., and Fergus, R. Intriguing properties of neural networks. In *International Conference on Learning Representations (ICLR)*, 2014.
- Taori, R., Dave, A., Shankar, V., Carlini, N., Recht, B., and Schmidt, L. Measuring robustness to natural distribution shifts in image classification. In *Advances in Neural Information Processing Systems (NeurIPS)*, 2020.

- Uecker, M., Lai, P., Murphy, M. J., Virtue, P., Elad, M., Pauly, J. M., Vasanawala, S. S., and Lustig, M. ES-PIRiT—an eigenvalue approach to autocalibrating parallel MRI: Where SENSE meets GRAPPA. In *Magnetic Resonance in Medicine*, pp. 990–1001, 2014.
- Ulyanov, D., Vedaldi, A., and Lempitsky, V. Deep image prior. In *IEEE Conference on Computer Vision and Pattern Recognition (CVPR)*, pp. 9446–9454, 2018.
- Veen, D. V., Jalal, A., Soltanolkotabi, M., Price, E., Vishwanath, S., and Dimakis, A. G. Compressed sensing with deep image prior and learned regularization. In *arXiv: 1806.06438 [stat.ML]*, 2018.
- Wang, P., Chen, E. Z., Chen, T., Patel, V. M., and Sun, S. Pyramid convolutional RNN for MRI reconstruction. In *arXiv: 1912.00543 [eess.IV]*, 2019.
- Yadav, C. and Bottou, L. Cold case: The lost MNIST digits. In *Advances in Neural Information Processing Systems (NeurIPS)*, 2019.
- Zalbagi Darestani, M. and Heckel, R. Accelerated MRI with un-trained neural networks. *arXiv: 2007.02471 [eess.IV]*, 2020.
- Zbontar, J., Knoll, F., Sriram, A., Muckley, M. J., Bruno, M., Defazio, A., Parente, M., Geras, K. J., Katsnelson, J., Chandarana, H., et al. fastMRI: An open dataset and benchmarks for accelerated MRI. In *arXiv: 1811.08839 [cs.CV]*, 2018.