

Appendix material

A. Recursive forward computation of the average path matrix

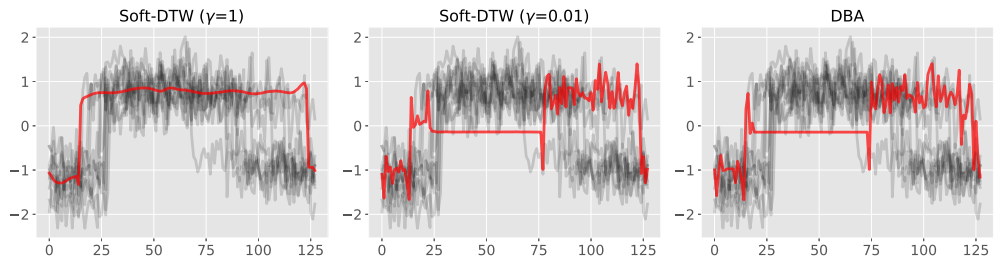
The average alignment under Gibbs distribution p_γ can be computed with the following forward recurrence, which mimics closely Bellman's original recursion. For each $i \in \llbracket n \rrbracket, j \in \llbracket m \rrbracket$, define

$$E_{i+1,j+1} = \begin{bmatrix} e^{-\delta_{i+1,j+1}/\gamma} E_{i,j} & \mathbf{0}_i \\ \mathbf{0}_j^T & e^{-r_{i+1,j+1}/\gamma} \end{bmatrix} + \begin{bmatrix} e^{-\delta_{i+1,j+1}/\gamma} E_{i,j+1} \\ \mathbf{0}_j^T & e^{-r_{i+1,j+1}/\gamma} \end{bmatrix} + \begin{bmatrix} e^{-\delta_{i+1,j+1}/\gamma} E_{i+1,j} & \mathbf{0}_i \\ \mathbf{0}_j^T & e^{-r_{i+1,j+1}/\gamma} \end{bmatrix}$$

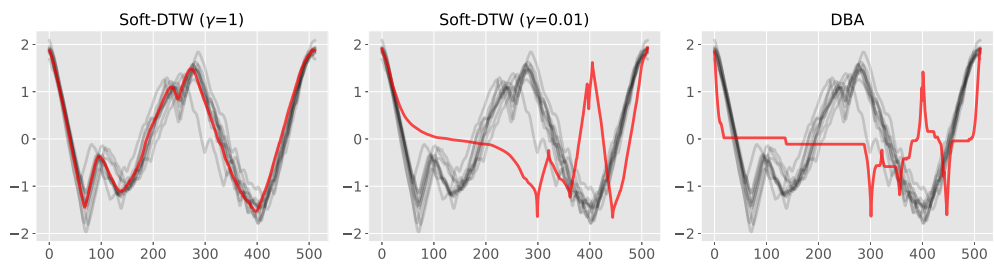
Here terms r_{ij} are computed following the recursion in Algorithm 2. Border matrices are initialized to 0, except for $E_{1,1}$ which is initialized to [1]. Upon completion, the average alignment matrix is stored in $E_{n,m}$.

The operation above consists in summing three matrices of size $(i+1, j+1)$. There are exactly (nm) such updates. A careful implementation of this algorithm, that would only store two arrays of matrices, as Algorithm 1 only store two arrays of values, can be carried out in $nm \min(n, m)$ space but it would still require $(nm)^2$ operations.

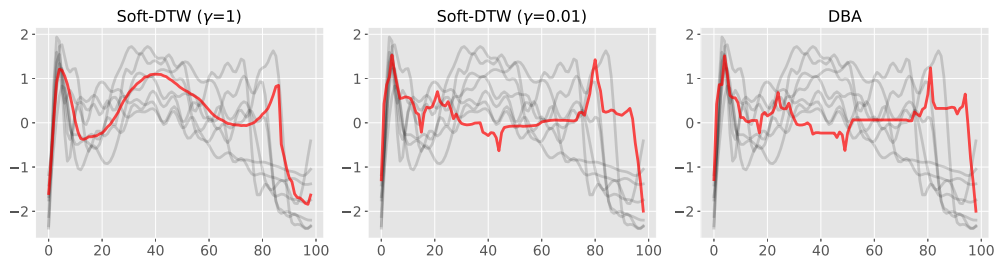
B. Barycenters obtained with random initialization



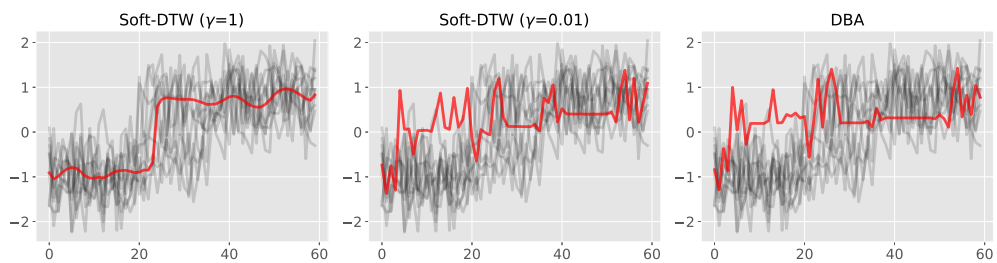
(a) CBF



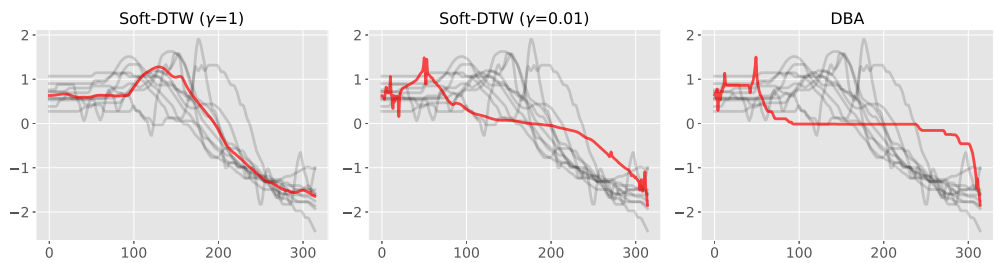
(b) Herring



(c) Medical Images

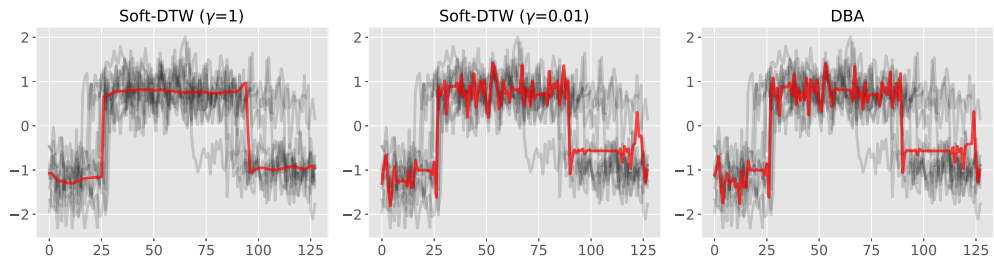


(d) Synthetic Control

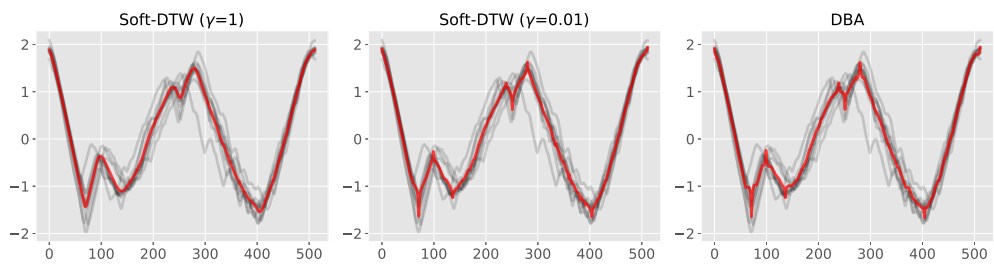


(e) Wave Gesture Library Y

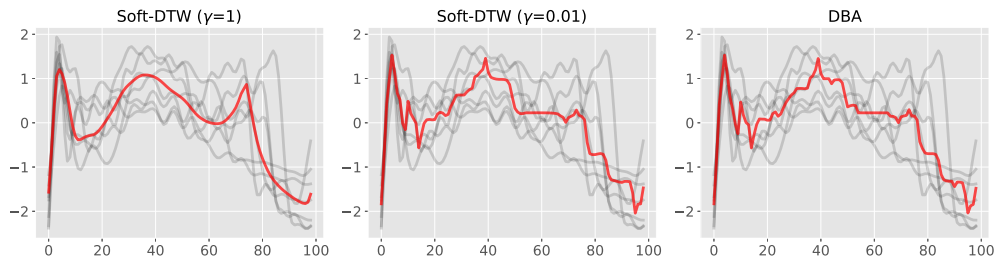
C. Barycenters obtained with Euclidean mean initialization



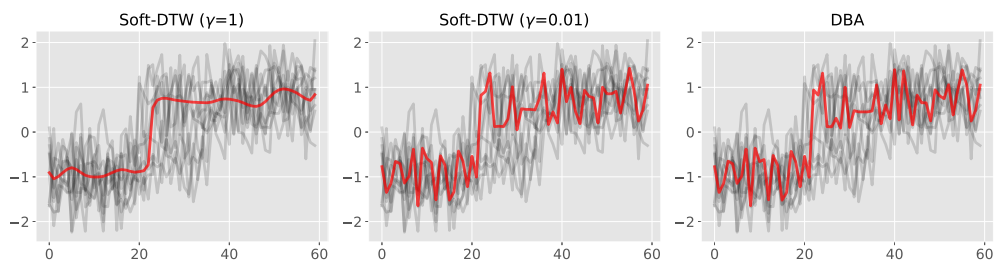
(a) CBF



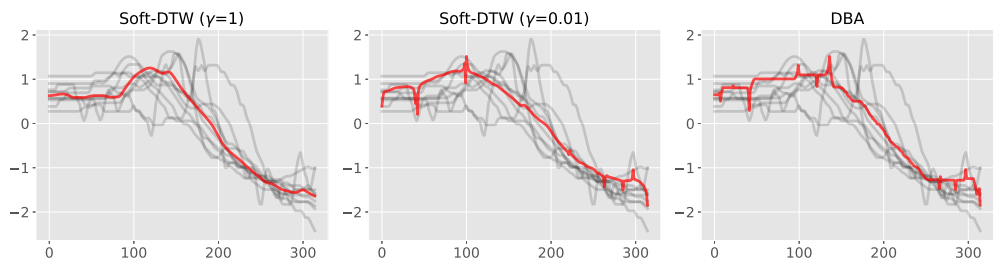
(b) Herring



(c) Medical Images



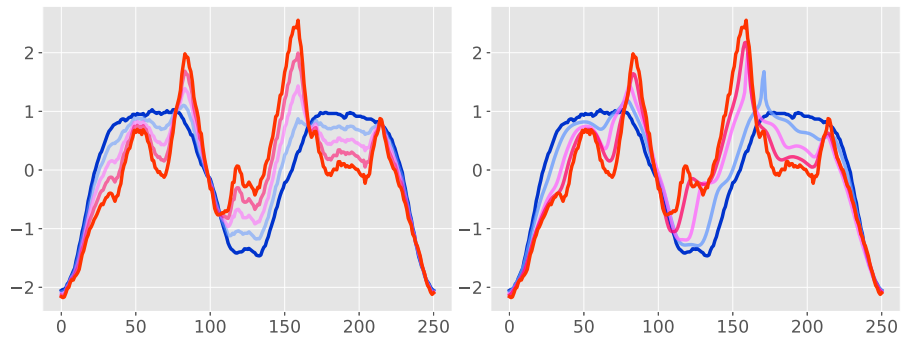
(d) Synthetic Control



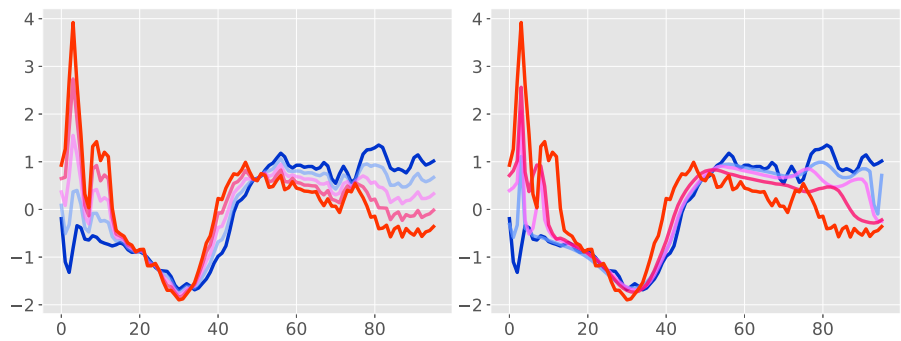
(e) Wave Gesture Library Y

D. More interpolation results

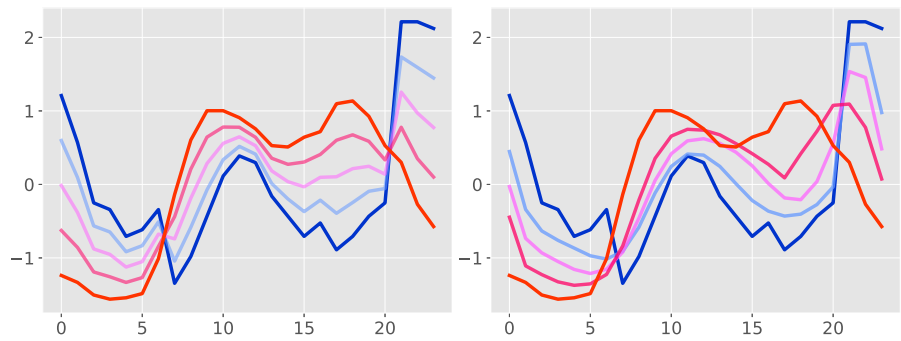
Left: results obtained under Euclidean loss. Right: results obtained under soft-DTW ($\gamma = 1$) loss.



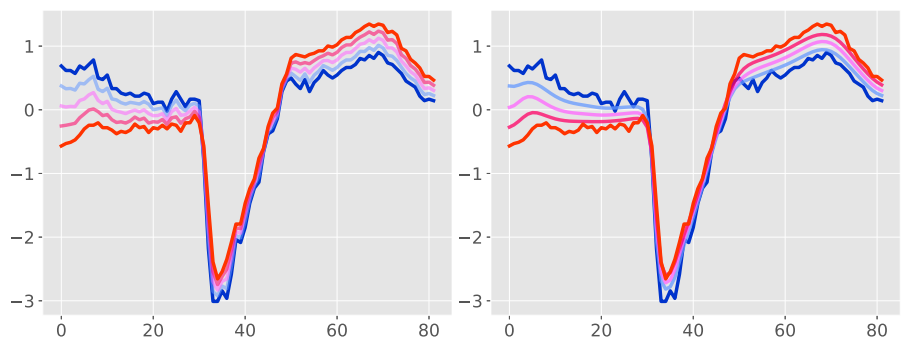
(a) ArrowHead



(b) ECG200



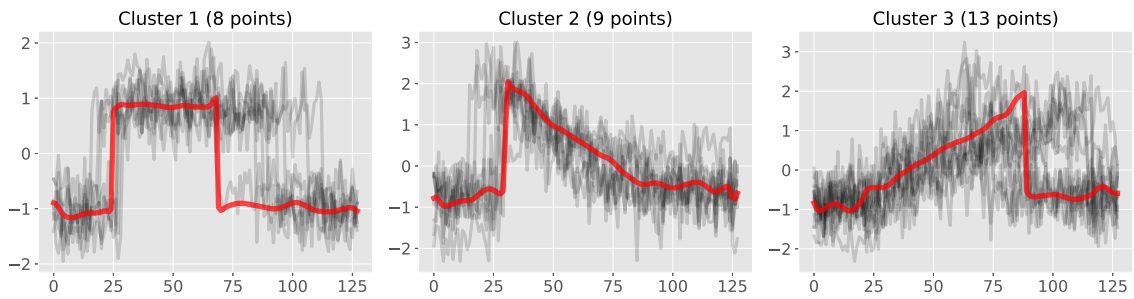
(c) ItalyPowerDemand



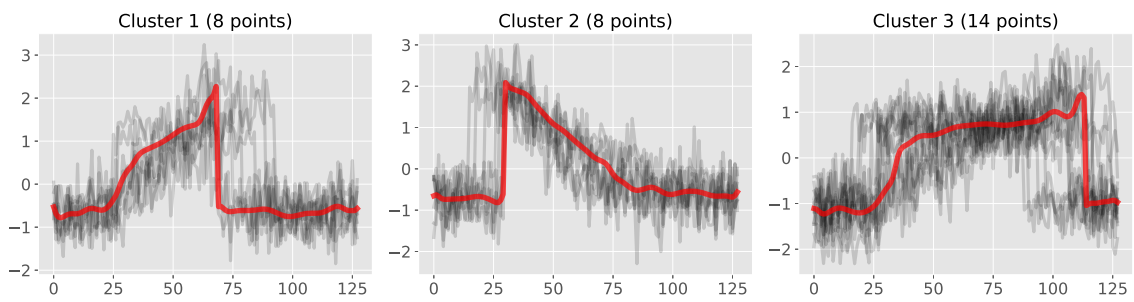
(d) TwoLeadECG

E. Clusters obtained by k -means under DTW or soft-DTW geometry

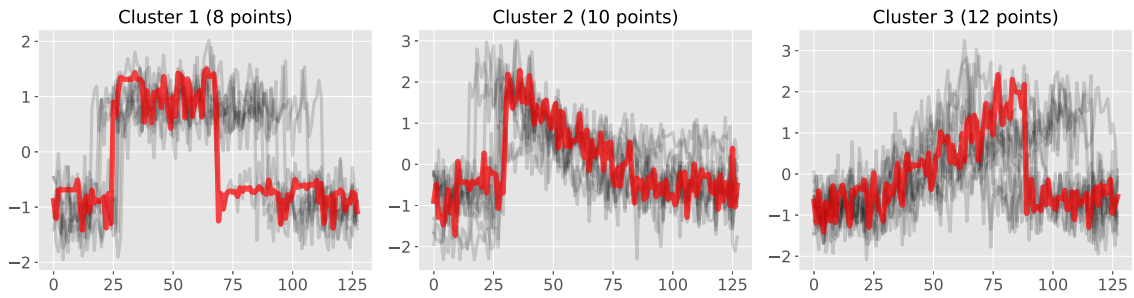
CBF dataset



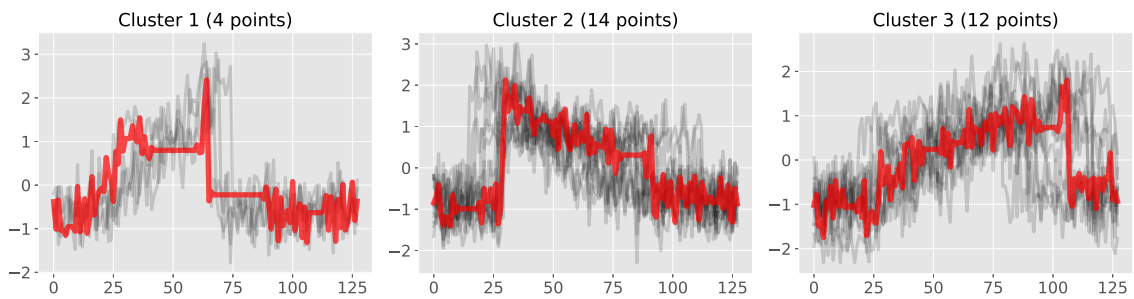
(a) Soft-DTW ($\gamma = 1$, random initialization)



(b) Soft-DTW ($\gamma = 1$, Euclidean mean initialization)

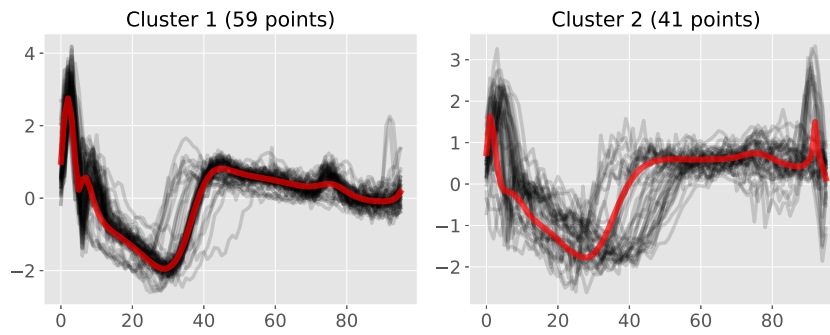


(c) DBA (random initialization)

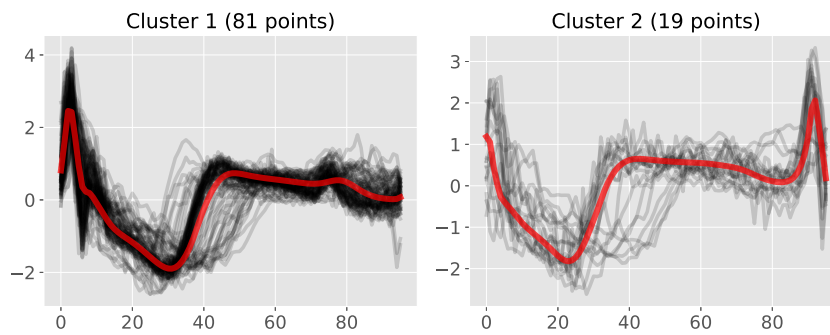


(d) DBA (Euclidean mean initialization)

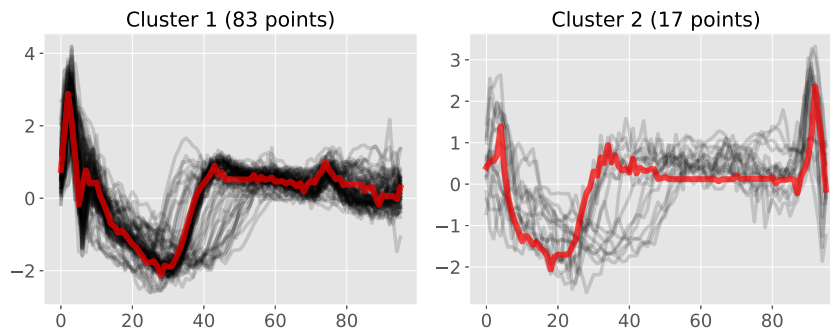
ECG200 dataset



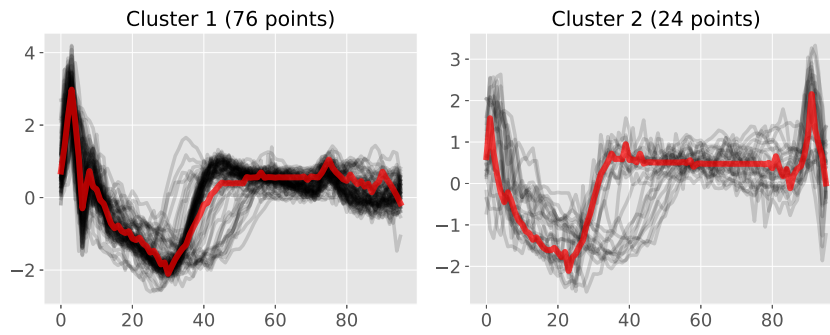
(a) Soft-DTW ($\gamma = 1$, random initialization)



(b) Soft-DTW ($\gamma = 1$, Euclidean mean initialization)

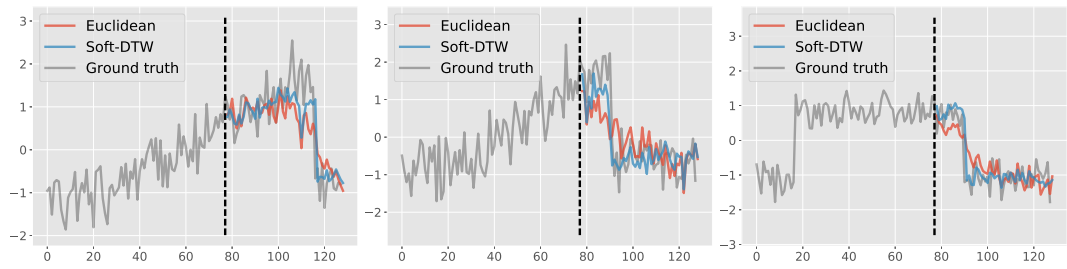


(c) DBA (random initialization)

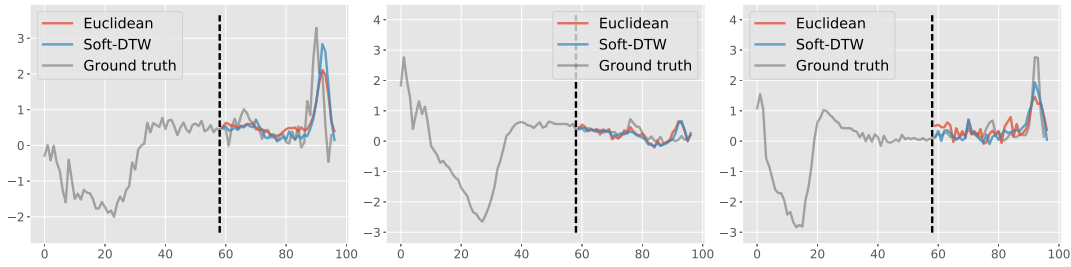


(d) DBA (Euclidean mean initialization)

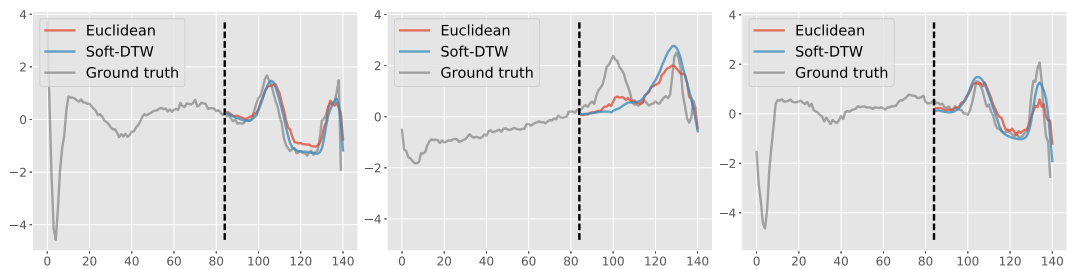
F. More visualizations of time-series prediction



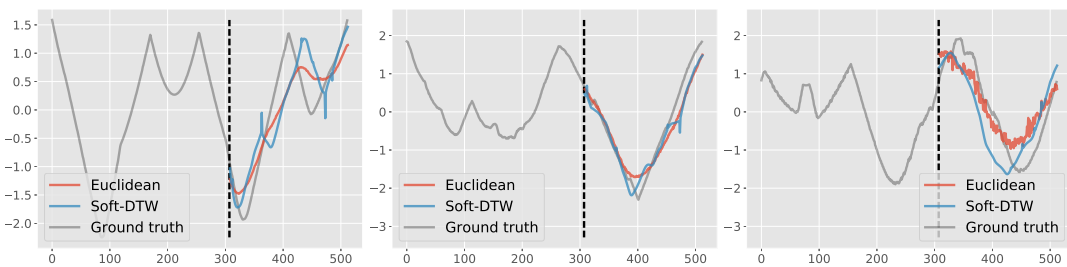
(a) CBF



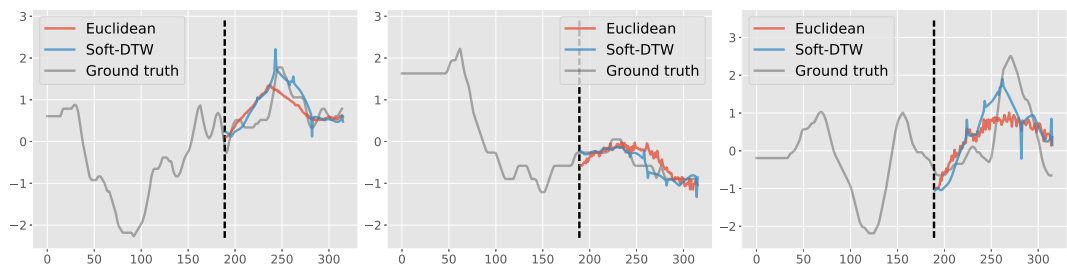
(b) ECG200



(c) ECG5000



(d) ShapesAll



(e) uWaveGestureLibrary_Y

G. Barycenters: DTW loss (Eq. 4 with $\gamma = 0$) achieved with random init

| Dataset | Soft-DTW $\gamma = 1$ | $\gamma = 0.1$ | $\gamma = 0.01$ | $\gamma = 0.001$ | Subgradient method | DBA | Euclidean mean |
|--------------------------------|-----------------------|----------------|-----------------|------------------|--------------------|---------|----------------|
| 50words | 5.000 | 2.785 | 2.513 | 2.721 | 44.399 | 4.554 | 25.388 |
| Adiac | 0.235 | 0.207 | 0.257 | 0.428 | 25.533 | 0.754 | 0.177 |
| ArrowHead | 2.390 | 1.598 | 1.487 | 1.664 | 36.125 | 2.512 | 2.743 |
| Beef | 10.471 | 6.541 | 6.200 | 6.238 | 88.100 | 7.780 | 25.347 |
| BeetleFly | 35.790 | 23.655 | 22.559 | 23.105 | 77.993 | 25.122 | 191.574 |
| BirdChicken | 23.300 | 12.542 | 11.164 | 11.954 | 45.777 | 12.820 | 92.061 |
| CBF | 21.098 | 11.949 | 12.564 | 12.667 | 30.281 | 14.836 | 28.236 |
| Car | 2.639 | 1.750 | 1.611 | 1.914 | 80.437 | 2.609 | 5.106 |
| ChlorineConcentration | 22.260 | 13.932 | 14.818 | 15.044 | 32.134 | 16.168 | 15.411 |
| CinC_ECG_torso | 118.872 | 80.248 | 76.536 | 76.812 | 262.221 | 90.663 | 761.238 |
| Coffee | 1.036 | 0.871 | 1.262 | 1.630 | 41.741 | 2.380 | 0.591 |
| Computers | 231.421 | 182.380 | 178.184 | 179.886 | ∞ | 183.388 | 391.830 |
| Cricket_X | 41.514 | 29.290 | 28.424 | 28.851 | 70.128 | 28.955 | 104.699 |
| Cricket_Y | 51.858 | 30.321 | 30.337 | 31.041 | 70.989 | 33.098 | 107.712 |
| Cricket_Z | 43.458 | 30.264 | 28.668 | 29.373 | 68.382 | 32.182 | 128.129 |
| DiatomSizeReduction | 0.055 | 0.054 | 0.064 | 0.132 | 49.308 | 0.418 | 0.033 |
| DistalPhalanxOutlineAgeGroup | 1.380 | 1.074 | 1.407 | 1.509 | 11.539 | 1.761 | 0.981 |
| DistalPhalanxOutlineCorrect | 2.501 | 1.968 | 2.267 | 2.634 | 13.169 | 2.991 | 2.374 |
| DistalPhalanxTW | 1.148 | 0.906 | 1.015 | 1.159 | 10.957 | 1.228 | 0.867 |
| ECG200 | 7.374 | 6.400 | 6.871 | 7.047 | 19.514 | 8.257 | 10.107 |
| ECG5000 | 8.951 | 8.961 | 10.601 | 10.265 | 34.558 | 12.098 | 14.517 |
| ECGFiveDays | 9.816 | 9.019 | 9.364 | 9.407 | 17.898 | 9.837 | 23.975 |
| Earthquakes | 148.959 | 85.219 | 85.470 | 85.515 | ∞ | 85.788 | 330.776 |
| ElectricDevices | 27.852 | 23.769 | 23.783 | 24.009 | ∞ | 24.869 | 56.470 |
| FISH | 0.978 | 0.641 | 0.662 | 0.957 | 63.566 | 1.680 | 1.543 |
| FaceAll | 15.068 | 12.373 | 13.248 | 13.494 | 24.582 | 15.980 | 29.982 |
| FaceFour | 15.500 | 14.519 | 15.002 | 14.849 | ∞ | 16.339 | 25.410 |
| FacesUCR | 15.033 | 13.077 | 13.405 | 14.174 | 30.621 | 14.796 | 27.026 |
| FordA | 56.936 | 45.492 | 46.170 | 46.038 | 96.087 | 49.723 | 218.482 |
| FordB | 59.117 | 47.812 | 47.058 | 47.642 | 102.279 | 50.262 | 250.595 |
| Gun_Point | 7.204 | 2.507 | 2.037 | 2.211 | 22.590 | 2.374 | 7.286 |
| Ham | 24.833 | 19.101 | 20.397 | 20.713 | 55.769 | 22.807 | 30.685 |
| HandOutlines | 3.400 | 2.690 | 2.814 | 28.759 | 353.235 | 3.422 | 7.838 |
| Haptics | 16.424 | 14.351 | 14.129 | 14.320 | 172.988 | 16.464 | 39.559 |
| Herring | 1.212 | 0.946 | 1.022 | 1.349 | 71.388 | 2.097 | 1.884 |
| InlineSkate | 83.107 | 29.672 | 22.819 | N/A | N/A | N/A | N/A |
| ItalyPowerDemand | 2.442 | 2.124 | 2.316 | 2.372 | 5.434 | 2.355 | 2.329 |
| MedicalImages | 6.934 | 5.809 | 5.980 | 6.089 | 22.777 | 6.252 | 10.911 |
| MiddlePhalanxOutlineAgeGroup | 0.858 | 0.753 | 1.305 | 1.375 | 11.474 | 1.605 | 0.624 |
| MiddlePhalanxOutlineCorrect | 0.832 | 0.714 | 0.985 | 1.030 | 11.643 | 1.678 | 0.611 |
| MiddlePhalanxTW | 0.755 | 0.581 | 0.963 | 1.206 | 10.684 | 1.274 | 0.447 |
| MoteStrain | 24.177 | 21.639 | 21.616 | 21.554 | 32.007 | 22.437 | 26.646 |
| NonInvasiveFatalECG_Thorax1 | 6.671 | 3.324 | 4.738 | 5.031 | 59.162 | 6.378 | 3.568 |
| NonInvasiveFatalECG_Thorax2 | 2.559 | 3.159 | 3.587 | 4.097 | 40339.200 | 6.494 | 2.864 |
| OSULeaf | 30.041 | 20.692 | 20.034 | 19.950 | 76.057 | 23.915 | 136.512 |
| OliveOil | 0.657 | 0.959 | 1.494 | 1.804 | 95.499 | 3.420 | 0.008 |
| PhalangesOutlinesCorrect | 1.383 | 1.114 | 1.405 | 1.516 | 11.070 | 1.743 | 1.210 |
| Phoneme | 99.205 | 72.412 | 73.666 | 73.767 | 157.124 | 78.664 | 138.157 |
| Plane | 1.079 | 0.849 | 1.220 | 1.629 | 20.328 | 2.111 | 1.209 |
| ProximalPhalanxOutlineAgeGroup | 0.618 | 0.511 | 0.691 | 0.878 | 10.437 | 1.177 | 0.322 |
| ProximalPhalanxOutlineCorrect | 0.749 | 0.654 | 0.833 | 0.882 | 10.767 | 1.111 | 0.615 |
| ProximalPhalanxTW | 0.653 | 0.536 | 0.672 | 0.778 | 10.377 | 1.133 | 0.462 |
| RefrigerationDevices | 159.745 | 146.601 | 140.634 | 141.200 | ∞ | 148.931 | 363.732 |
| ScreenType | 156.442 | 123.746 | 121.432 | 122.247 | ∞ | 132.748 | 334.379 |
| ShapeletSim | 236.039 | 123.605 | 125.657 | 126.062 | 154.480 | 130.428 | 283.458 |
| ShapesAll | 15.267 | 7.108 | 6.466 | 6.818 | 58.734 | 8.236 | 67.790 |
| SmallKitchenAppliances | 176.073 | 164.419 | 162.009 | 162.585 | ∞ | 168.170 | 524.542 |
| SonyAIBORobotSurface | 5.735 | 4.916 | 5.425 | 5.337 | ∞ | 5.813 | 5.430 |
| SonyAIBORobotSurfaceII | 11.994 | 11.048 | 11.278 | 11.405 | 6637415.793 | 11.481 | 13.783 |
| StarLightCurves | 22.342 | 11.757 | 7.934 | 7.654 | 102.255 | 11.600 | 47.353 |
| Strawberry | 1.392 | 1.191 | 1.477 | 1.627 | 28.696 | 2.347 | 1.300 |
| SwedishLeaf | 2.409 | 1.968 | 2.476 | 2.904 | 19.638 | 3.283 | 6.274 |
| Symbols | 0.845 | 0.488 | 0.439 | 0.460 | ∞ | 0.828 | 4.953 |
| ToeSegmentation1 | 35.904 | 27.461 | 26.554 | 26.988 | 63.040 | 29.838 | 129.858 |
| ToeSegmentation2 | 34.177 | 24.476 | 23.003 | 23.194 | ∞ | 24.944 | 170.222 |
| Trace | 2.686 | 1.453 | 0.870 | 1.031 | 43.017 | 2.233 | 26.037 |
| TwoLeadECG | 1.811 | 1.514 | 1.641 | 1.701 | 7.961 | 1.802 | 2.216 |
| Two_Patterns | 12.048 | 9.294 | 7.764 | 8.143 | 22.489 | 8.937 | 60.963 |
| UWaveGestureLibraryAll | 68.276 | 42.692 | 38.327 | 40.320 | ∞ | 49.486 | 181.901 |
| Wine | 0.728 | 0.500 | 0.746 | 1.147 | 32.463 | 1.812 | 0.094 |
| WordsSynonyms | 9.305 | 4.917 | 4.491 | 4.740 | 48.605 | 7.209 | 29.713 |
| Worms | 100.683 | 64.029 | 61.527 | 61.296 | 35.906 | 68.282 | 421.381 |
| WormsTwoClass | 110.292 | 68.932 | 66.258 | 65.964 | 37.047 | 72.387 | 430.774 |
| synthetic_control | 14.366 | 7.115 | 7.506 | 7.516 | 15.931 | 8.123 | 12.187 |
| uWaveGestureLibrary_X | 27.610 | 16.618 | 14.902 | 14.442 | ∞ | 18.269 | 75.119 |
| uWaveGestureLibrary_Y | 29.964 | 16.106 | 14.556 | 14.450 | ∞ | 15.961 | 74.405 |
| uWaveGestureLibrary_Z | 40.154 | 24.001 | 22.462 | 22.656 | ∞ | 25.040 | 107.540 |
| wafer | 25.831 | 23.595 | 25.828 | 25.195 | ∞ | 27.323 | 65.100 |
| yoga | 27.418 | 13.524 | 11.828 | 12.051 | 40.171 | 15.319 | 111.236 |

H. Barycenters: DTW loss (Eq. (4) with $\gamma = 0$) achieved with Euclidean init

| Dataset | Soft-DTW $\gamma = 1$ | $\gamma = 0.1$ | $\gamma = 0.01$ | $\gamma = 0.001$ | Subgradient method | DBA | Euclidean mean |
|--------------------------------|-----------------------|----------------|-----------------|------------------|--------------------|---------------|----------------|
| 50words | 5.400 | 2.895 | 2.355 | 2.439 | 4.064 | 2.595 | 22.294 |
| Adiac | 0.124 | 0.103 | 0.089 | 0.069 | 0.081 | 0.071 | 0.103 |
| ArrowHead | 2.677 | 1.759 | 1.282 | 1.327 | 1.587 | 1.411 | 2.965 |
| Beef | 14.814 | 6.412 | 5.252 | 5.694 | 11.112 | 5.528 | 31.486 |
| BeetleFly | 33.082 | 20.819 | 20.781 | 22.127 | 25.554 | 21.960 | 191.285 |
| BirdChicken | 21.646 | 9.445 | 7.807 | 8.026 | 473.653 | 8.243 | 70.614 |
| CBF | 22.498 | 11.844 | 11.433 | 11.597 | 15.321 | 12.291 | 28.228 |
| Car | 1.556 | 0.932 | 0.693 | 0.901 | 1.171 | 1.079 | 2.439 |
| ChlorineConcentration | 19.239 | 10.663 | 10.434 | 10.468 | 11.370 | 10.638 | 13.549 |
| CinC_ECG_torso | 112.562 | 78.292 | 69.415 | 70.383 | 76.693 | 68.641 | 751.445 |
| Coffee | 1.078 | 0.657 | 0.460 | 0.393 | 0.435 | 0.399 | 0.571 |
| Computers | 172.590 | 138.605 | 144.576 | 146.409 | ∞ | 154.956 | 381.271 |
| Cricket_X | 48.334 | 35.136 | 33.103 | 33.312 | 42.018 | 34.430 | 125.879 |
| Cricket_Y | 41.804 | 31.395 | 31.044 | 31.158 | 35.957 | 31.749 | 97.393 |
| Cricket_Z | 46.957 | 33.453 | 34.005 | 33.708 | 45.125 | 36.025 | 140.474 |
| DiatomSizeReduction | 0.039 | 0.033 | 0.028 | 0.021 | 0.024 | 0.019 | 0.032 |
| DistalPhalanxOutlineAgeGroup | 1.578 | 0.988 | 0.784 | 0.779 | 0.847 | 0.794 | 1.075 |
| DistalPhalanxOutlineCorrect | 2.878 | 2.002 | 1.751 | 1.754 | 2475.922 | 1.790 | 2.780 |
| DistalPhalanxTW | 1.377 | 0.837 | 0.655 | 0.651 | 0.773 | 0.667 | 0.997 |
| ECG200 | 7.266 | 5.608 | 5.395 | 5.424 | 5.955 | 5.494 | 9.638 |
| ECG5000 | 12.430 | 10.377 | 10.332 | 10.343 | 12.340 | 10.595 | 18.886 |
| ECGFiveDays | 8.416 | 7.452 | 7.046 | 7.101 | 145.106 | 7.145 | 23.477 |
| Earthquakes | 172.035 | 91.568 | 90.684 | 91.071 | ∞ | 92.126 | 335.240 |
| ElectricDevices | 30.832 | 26.480 | 27.131 | 27.076 | ∞ | 27.615 | 57.938 |
| FISH | 1.183 | 0.806 | 0.541 | 0.508 | 0.645 | 0.551 | 1.933 |
| FaceAll | 18.102 | 13.305 | 13.104 | 13.074 | 16.491 | 13.915 | 40.404 |
| FaceFour | 17.070 | 13.069 | 12.984 | 13.091 | ∞ | 13.568 | 28.203 |
| FacesUCR | 17.172 | 13.081 | 13.293 | 13.394 | 15.780 | 13.498 | 35.942 |
| FordA | 53.903 | 42.199 | 41.835 | 41.966 | 53.545 | 44.259 | 235.362 |
| FordB | 61.168 | 48.150 | 47.327 | 47.743 | 60.120 | 50.121 | 246.802 |
| Gun_Point | 5.924 | 2.132 | 1.695 | 1.666 | 2.543 | 1.682 | 5.906 |
| Ham | 25.353 | 18.841 | 17.457 | 17.294 | ∞ | 17.917 | 32.456 |
| HandOutlines | 2.238 | 1.718 | 1.004 | 0.527 | ∞ | 0.515 | 6.452 |
| Haptics | 12.554 | 8.874 | 7.785 | 8.197 | 12.193 | 8.219 | 35.613 |
| Herring | 1.655 | 1.117 | 0.809 | 0.760 | 0.956 | 0.817 | 2.564 |
| InlineSkate | 100.849 | 46.460 | 27.248 | 35.578 | N/A | N/A | N/A |
| ItalyPowerDemand | 2.597 | 1.990 | 1.956 | 1.985 | 2.132 | 1.997 | 2.449 |
| MedicalImages | 5.719 | 4.319 | 4.145 | 4.070 | 4.791 | 4.371 | 8.047 |
| MiddlePhalanxOutlineAgeGroup | 0.870 | 0.578 | 0.427 | 0.415 | 0.464 | 0.426 | 0.552 |
| MiddlePhalanxOutlineCorrect | 0.799 | 0.609 | 0.460 | 0.443 | 0.501 | 0.461 | 0.577 |
| MiddlePhalanxTW | 0.658 | 0.466 | 0.335 | 0.321 | 0.358 | 0.332 | 0.434 |
| MoteStrain | 24.451 | 20.720 | 20.829 | 21.057 | ∞ | 21.273 | 26.694 |
| NonInvasiveFatalECG_Thorax1 | 1.619 | 1.384 | 0.907 | 0.785 | 0.691 | 0.814 | 1.400 |
| NonInvasiveFatalECG_Thorax2 | 1.624 | 1.370 | 0.932 | 0.827 | 2.163 | 0.853 | 1.409 |
| OSULeaf | 27.428 | 18.666 | 18.544 | 18.595 | 24.692 | 20.244 | 135.980 |
| OliveOil | 0.367 | 0.074 | 0.022 | 0.013 | 0.011 | 0.009 | 0.011 |
| PhalangesOutlinesCorrect | 1.172 | 0.895 | 0.699 | 0.695 | 0.766 | 0.704 | 1.002 |
| Phoneme | 135.535 | 104.971 | 105.478 | 108.031 | 126.055 | 108.513 | 254.392 |
| Plane | 0.928 | 0.600 | 0.404 | 0.399 | 0.499 | 0.430 | 1.203 |
| ProximalPhalanxOutlineAgeGroup | 0.820 | 0.502 | 0.361 | 0.346 | 0.390 | 0.356 | 0.512 |
| ProximalPhalanxOutlineCorrect | 0.816 | 0.630 | 0.463 | 0.452 | 0.517 | 0.461 | 0.669 |
| ProximalPhalanxTW | 0.637 | 0.431 | 0.313 | 0.304 | 0.341 | 0.308 | 0.471 |
| RefrigerationDevices | 154.420 | 133.321 | 135.721 | 135.300 | ∞ | 142.697 | 358.823 |
| ScreenType | 189.188 | 143.582 | 143.894 | 141.776 | ∞ | 148.464 | 325.840 |
| ShapeletSim | 231.937 | 124.443 | 122.000 | 122.506 | 154.089 | 127.977 | 284.079 |
| ShapesAll | 13.416 | 7.519 | 6.420 | 6.509 | 7.317 | 7.478 | 80.306 |
| SmallKitchenAppliances | 188.030 | 173.670 | 169.755 | 167.097 | ∞ | 173.004 | 505.356 |
| SonyAIBORobotSurface | 5.715 | 4.002 | 3.870 | 3.896 | ∞ | 3.828 | 5.444 |
| SonyAIBORobotSurfaceII | 11.300 | 8.947 | 8.853 | 8.871 | 12.651 | 8.977 | 14.225 |
| StarLightCurves | 13.581 | 6.619 | 4.054 | 3.765 | 7.247 | 4.517 | 30.354 |
| Strawberry | 2.218 | 1.413 | 1.128 | 1.070 | 1.374 | 1.156 | 2.128 |
| SwedishLeaf | 2.957 | 2.068 | 2.049 | 2.081 | 2.520 | 2.163 | 6.236 |
| Symbols | 0.762 | 0.451 | 0.412 | 0.401 | ∞ | 0.474 | 4.822 |
| ToeSegmentation1 | 35.832 | 26.067 | 26.337 | 25.735 | 31.157 | 27.493 | 131.683 |
| ToeSegmentation2 | 34.264 | 22.238 | 20.800 | 21.563 | ∞ | 23.080 | 164.101 |
| Trace | 1.737 | 1.744 | 1.508 | 1.378 | 4.170 | 1.969 | 26.814 |
| TwoLeadECG | 1.533 | 1.172 | 1.030 | 1.043 | 1.323 | 1.093 | 2.046 |
| Two_Patterns | 10.891 | 7.505 | 6.045 | 6.079 | 18.987 | 6.584 | 66.027 |
| UWaveGestureLibraryAll | 67.549 | 38.179 | 32.894 | 33.426 | ∞ | 39.241 | 167.486 |
| Wine | 0.707 | 0.188 | 0.127 | 0.111 | 0.114 | 0.110 | 0.118 |
| WordsSynonyms | 9.804 | 7.282 | 6.711 | 6.785 | 8.884 | 6.868 | 39.843 |
| Worms | 101.850 | 61.067 | 58.725 | 56.793 | 244.738 | 63.234 | 415.674 |
| WormsTwoClass | 122.901 | 68.771 | 64.655 | 64.898 | 1297.616 | 72.011 | 395.088 |
| synthetic_control | 18.147 | 9.189 | 9.307 | 9.350 | 11.520 | 9.614 | 19.237 |
| uWaveGestureLibrary_X | 34.423 | 19.787 | 18.746 | 17.807 | ∞ | 24.269 | 93.839 |
| uWaveGestureLibrary_Y | 27.744 | 14.309 | 13.010 | 13.607 | ∞ | 15.283 | 51.854 |
| uWaveGestureLibrary_Z | 21.927 | 10.081 | 8.456 | 8.453 | ∞ | 11.040 | 47.947 |
| wafer | 32.561 | 29.197 | 28.908 | 28.820 | ∞ | 33.379 | 67.413 |
| yoga | 23.698 | 11.632 | 9.433 | 9.204 | 16.239 | 10.058 | 93.688 |

I. k -means clustering: DTW loss achieved (Eq. (5) with $\gamma = 0$, log-scaled) when using random initialization

| Dataset | Soft-DTW $\gamma = 1$ | $\gamma = 0.1$ | $\gamma = 0.01$ | $\gamma = 0.001$ | Subgradient method | DBA | Euclidean mean |
|------------------------------|-----------------------|----------------|-----------------|------------------|--------------------|---------------|----------------|
| 50words | 16.294 | 16.193 | 16.125 | 16.135 | 16.163 | 16.156 | 16.205 |
| Adiac | 11.933 | 11.933 | 11.933 | 11.933 | 11.933 | 11.933 | 11.933 |
| ArrowHead | 9.020 | 8.757 | 8.699 | 8.687 | 8.732 | 8.692 | 8.958 |
| Beef | 11.215 | 11.095 | 11.069 | 11.061 | 11.061 | 11.117 | 11.215 |
| BeetleFly | 9.946 | 9.618 | 9.531 | 9.592 | 9.619 | 9.591 | 10.368 |
| BirdChicken | 9.996 | 9.652 | 9.374 | 9.515 | 9.870 | 9.585 | 10.335 |
| CBF | 10.150 | 10.065 | 10.005 | 10.006 | 10.009 | 10.009 | 10.150 |
| Car | 9.392 | 9.290 | 9.067 | 9.039 | 9.059 | 9.046 | 9.276 |
| ChlorineConcentration | 15.512 | 15.214 | 15.182 | 15.175 | 15.176 | 15.176 | 15.331 |
| CinC_ECG_torso | 13.134 | 12.837 | 12.848 | 12.868 | 13.621 | 12.877 | 13.621 |
| Coffee | 7.150 | 6.893 | 6.692 | 6.628 | 6.693 | 6.651 | 6.825 |
| Computers | 16.420 | 16.498 | 16.489 | 16.502 | 16.960 | 16.475 | 16.960 |
| Cricket_X | 16.922 | 16.696 | 16.629 | 16.628 | 16.649 | 16.653 | 16.955 |
| Cricket_Y | 16.783 | 16.588 | 16.545 | 16.533 | 16.570 | 16.570 | 16.803 |
| Cricket_Z | 16.874 | 16.669 | 16.597 | 16.593 | 16.620 | 16.620 | 16.981 |
| DiatomSizeReduction | 5.959 | 5.907 | 5.889 | 5.739 | 5.798 | 5.758 | 5.932 |
| DistalPhalanxOutlineAgeGroup | 11.193 | 11.220 | 11.202 | 11.198 | 11.194 | 11.196 | 11.158 |
| DistalPhalanxOutlineCorrect | 12.467 | 12.373 | 12.340 | 12.342 | 12.494 | 12.350 | 12.483 |
| DistalPhalanxTW | 11.244 | 11.260 | 11.263 | 11.251 | 11.264 | 11.261 | 11.222 |
| ECG200 | 11.395 | 11.317 | 11.323 | 11.274 | 11.300 | 11.289 | 11.501 |
| ECG5000 | 16.169 | 16.084 | 16.142 | 16.136 | 16.137 | 16.136 | 16.211 |
| ECGFiveDays | 8.734 | 8.579 | 8.522 | 8.513 | 8.713 | 8.533 | 8.818 |
| Earthquakes | 14.757 | 14.727 | 14.726 | 14.728 | 14.757 | 14.726 | 14.757 |
| ElectricDevices | 22.404 | 22.428 | 22.401 | 22.398 | 22.630 | 22.399 | 22.332 |
| FISH | 10.841 | 10.740 | 10.594 | 10.514 | 10.560 | 10.566 | 10.841 |
| FaceAll | 16.272 | 16.187 | 16.185 | 16.183 | 16.197 | 16.182 | 16.291 |
| FaceFour | 10.422 | 10.318 | 10.302 | 10.316 | 10.575 | 10.321 | 10.533 |
| FacesUCR | 14.479 | 14.432 | 14.426 | 14.423 | 14.430 | 14.429 | 14.431 |
| FordA | 18.604 | 18.390 | 18.388 | 18.387 | 18.977 | 18.385 | 18.977 |
| FordB | 17.620 | 17.429 | 17.425 | 17.426 | 17.466 | 17.416 | 17.998 |
| Gun_Point | 10.242 | 10.019 | 9.843 | 9.743 | 9.883 | 9.738 | 10.130 |
| Ham | 12.772 | 12.545 | 12.488 | 12.473 | 13.240 | 12.506 | 12.957 |
| MedicalImages | 15.081 | 14.982 | 14.985 | 14.979 | 14.986 | 14.986 | 15.032 |
| MiddlePhalanxOutlineAgeGroup | 9.909 | 9.919 | 9.856 | 9.818 | 9.824 | 9.822 | 9.856 |
| MiddlePhalanxOutlineCorrect | 11.121 | 11.088 | 10.984 | 10.951 | 10.962 | 10.961 | 10.923 |
| MiddlePhalanxTW | 10.514 | 10.514 | 10.514 | 10.514 | 10.514 | 10.514 | 10.514 |
| MoteStrain | 9.560 | 9.484 | 9.460 | 9.451 | 9.201 | 9.470 | 9.557 |
| NonInvasiveFatalECG_ThoraxI | 17.728 | N/A | N/A | N/A | N/A | N/A | N/A |
| ProximalPhalanxTW | 11.055 | 10.993 | 10.978 | 10.958 | 10.968 | 10.965 | 10.968 |
| RefrigerationDevices | 17.391 | 17.351 | 17.311 | 17.322 | 17.758 | 17.324 | 17.758 |
| ScreenType | 17.467 | 17.388 | 17.306 | 17.297 | 18.126 | 17.289 | 17.838 |
| ShapeletSim | 11.176 | 10.896 | 10.905 | 10.906 | 10.916 | 10.915 | 11.176 |
| ShapesAll | 17.539 | 17.405 | 17.331 | 17.333 | 17.605 | 17.357 | 17.509 |
| SmallKitchenAppliances | 17.551 | 17.611 | 17.537 | 17.606 | 18.007 | 17.561 | 18.007 |
| SonyAIBORobotSurface | 8.181 | 7.959 | 7.934 | 7.943 | 8.247 | 7.958 | 8.084 |
| SonyAIBORobotSurfaceII | 9.349 | 9.265 | 9.267 | 9.267 | 9.325 | 9.277 | 9.338 |
| StarLightCurves | 19.435 | 19.110 | 19.012 | N/A | N/A | N/A | N/A |
| Trace | 14.570 | 14.570 | 14.556 | 14.550 | 14.555 | 14.556 | 14.553 |
| TwoLeadECG | 6.939 | 6.939 | 6.892 | 6.879 | 6.936 | 6.892 | 6.743 |
| Two_Patterns | 17.416 | 17.379 | 17.317 | 17.325 | 17.524 | 17.307 | 17.524 |
| UWaveGestureLibraryAll | 18.911 | 18.641 | 18.514 | 18.531 | 19.282 | 18.537 | 19.244 |
| Wine | 7.527 | 7.297 | 6.482 | 6.358 | 6.390 | 6.353 | 6.223 |
| WordsSynonyms | 15.209 | 15.093 | 15.024 | 15.025 | 15.053 | 15.036 | 15.159 |
| Worms | 14.184 | 14.051 | 13.889 | 13.896 | 14.943 | 13.968 | 14.648 |
| WormsTwoClass | 13.727 | 13.471 | 13.429 | 13.462 | 14.944 | 13.494 | 14.944 |
| synthetic_control | 15.338 | 15.303 | 15.292 | 15.291 | 15.303 | 15.295 | 15.278 |
| uWaveGestureLibrary_X | 18.789 | 18.568 | N/A | N/A | N/A | N/A | N/A |

J. k -means clustering: DTW loss achieved (Eq. (5) with $\gamma = 0$, log-scaled) when using Euclidean mean initialization

| Dataset | Soft-DTW $\gamma = 1$ | $\gamma = 0.1$ | $\gamma = 0.01$ | $\gamma = 0.001$ | Subgradient method | DBA | Euclidean mean |
|------------------------------|-----------------------|----------------|-----------------|------------------|--------------------|---------------|----------------|
| 50words | 16.233 | 16.145 | 16.046 | 16.035 | 16.045 | 16.233 | 16.233 |
| Adiac | 12.311 | 12.311 | 12.264 | 12.241 | 12.234 | 12.233 | 12.311 |
| ArrowHead | 9.014 | 8.963 | 8.766 | 8.746 | 8.851 | 8.809 | 9.014 |
| Beef | 11.225 | 11.110 | 11.088 | 11.079 | 11.077 | 11.070 | 11.300 |
| BeetleFly | 9.895 | 9.290 | 9.268 | 9.240 | 9.512 | 10.926 | 10.926 |
| BirdChicken | 10.032 | 9.542 | 9.352 | 9.338 | 9.422 | 9.414 | 10.335 |
| CBF | 10.246 | 9.995 | 9.910 | 9.908 | 9.933 | 9.921 | 10.246 |
| Car | 9.276 | 9.229 | 8.989 | 8.910 | 8.936 | 8.935 | 9.276 |
| ChlorineConcentration | 15.331 | 15.291 | 15.254 | 15.252 | 15.270 | 15.252 | 15.331 |
| CinC_ECG_torso | 13.197 | 12.803 | 12.752 | 12.728 | 13.723 | 13.723 | 13.723 |
| Coffee | 6.825 | 6.825 | 6.668 | 6.599 | 6.605 | 6.591 | 6.825 |
| Computers | 16.417 | 16.346 | 16.301 | 16.289 | 17.167 | 16.342 | 17.167 |
| Cricket_X | 16.895 | 16.719 | 16.622 | 16.623 | 16.612 | 16.600 | 16.987 |
| Cricket_Y | 16.770 | 16.651 | 16.546 | 16.514 | 16.515 | 16.527 | 16.861 |
| Cricket_Z | 16.924 | 16.748 | 16.670 | 16.633 | 16.653 | 16.653 | 17.028 |
| DiatomSizeReduction | 5.963 | 5.963 | 5.963 | 5.884 | 5.897 | 5.896 | 5.963 |
| DistalPhalanxOutlineAgeGroup | 11.164 | 11.164 | 11.164 | 11.164 | 11.164 | 11.164 | 11.164 |
| DistalPhalanxOutlineCorrect | 12.544 | 12.533 | 12.494 | 12.475 | 12.240 | 12.479 | 12.577 |
| DistalPhalanxTW | 11.242 | 11.259 | 11.256 | 11.243 | 11.251 | 11.245 | 11.259 |
| ECG200 | 11.462 | 11.291 | 11.239 | 11.222 | 11.231 | 11.234 | 11.503 |
| ECG5000 | 16.253 | 16.180 | 16.171 | 16.183 | 16.170 | 16.172 | 16.262 |
| ECGFiveDays | 8.738 | 8.614 | 8.543 | 8.549 | 8.709 | 8.559 | 8.818 |
| Earthquakes | 15.113 | 14.625 | 14.601 | 14.599 | 15.952 | 14.597 | 15.952 |
| ElectricDevices | 22.295 | 22.325 | 22.291 | 22.290 | 22.379 | 22.283 | 22.379 |
| FISH | 10.904 | 10.843 | 10.589 | 10.543 | 10.527 | 10.555 | 10.904 |
| FaceAll | 16.278 | 16.162 | 16.145 | 16.145 | 16.152 | 16.140 | 16.347 |
| FaceFour | 10.376 | 10.273 | 10.239 | 10.226 | 10.566 | 10.241 | 10.566 |
| FacesUCR | 14.472 | 14.434 | 14.406 | 14.407 | 14.391 | 14.481 | 14.481 |
| FordA | 18.581 | 18.354 | 18.354 | 18.360 | 20.038 | 20.038 | 20.038 |
| FordB | 17.649 | 17.443 | 17.429 | 17.436 | 17.466 | 17.427 | 19.143 |
| Gun_Point | 10.334 | 10.027 | 9.806 | 9.751 | 9.902 | 9.833 | 10.334 |
| Ham | 12.805 | 12.603 | 12.559 | 12.558 | 12.974 | 12.561 | 12.974 |
| HandOutlines | 13.712 | N/A | N/A | N/A | N/A | N/A | N/A |
| MedicalImages | 15.082 | 14.963 | 14.940 | 14.942 | 14.950 | 14.941 | 15.091 |
| MiddlePhalanxOutlineAgeGroup | 9.856 | 9.856 | 9.855 | 9.821 | 9.823 | 9.821 | 9.856 |
| MiddlePhalanxOutlineCorrect | 10.962 | 10.962 | 10.962 | 10.959 | 10.950 | 10.950 | 10.962 |
| MiddlePhalanxTW | 10.558 | 10.587 | 10.587 | 10.569 | 10.572 | 10.570 | 10.587 |
| MoteStrain | 9.551 | 9.454 | 9.413 | 9.451 | 9.557 | 9.446 | 9.557 |
| NonInvasiveFatalECG_ThoraxI | 17.765 | N/A | N/A | N/A | N/A | N/A | N/A |
| ProximalPhalanxTW | 10.978 | 10.973 | 10.978 | 10.978 | 10.978 | 10.978 | 10.978 |
| RefrigerationDevices | 17.260 | 17.202 | 17.093 | 17.073 | 18.140 | 17.095 | 18.140 |
| ScreenType | 17.430 | 17.359 | 17.294 | 17.292 | 17.838 | 17.323 | 17.838 |
| ShapeletSim | 11.497 | 10.864 | 10.845 | 10.853 | 10.865 | 11.608 | 11.608 |
| ShapesAll | 17.560 | 17.431 | 17.335 | 17.328 | 17.560 | 17.560 | 17.560 |
| SmallKitchenAppliances | 17.310 | 17.273 | 17.357 | 17.357 | 18.206 | 18.206 | 18.206 |
| SonyAIBORobotSurface | 8.084 | 7.980 | 7.941 | 7.947 | 8.084 | 7.948 | 8.084 |
| SonyAIBORobotSurfaceII | 9.338 | 9.207 | 9.196 | 9.195 | 9.338 | 9.195 | 9.338 |
| StarLightCurves | 19.457 | 19.178 | 19.083 | N/A | N/A | N/A | N/A |
| Trace | 14.553 | 14.553 | 14.553 | 14.549 | 14.553 | 14.553 | 14.553 |
| TwoLeadECG | 6.743 | 6.705 | 6.623 | 6.606 | 6.666 | 6.633 | 6.743 |
| Two_Patterns | 17.084 | 17.363 | 17.242 | 17.255 | 17.518 | 17.316 | 17.942 |
| UWaveGestureLibraryAll | 18.820 | 18.613 | 18.539 | 18.488 | 19.259 | 18.508 | 19.259 |
| Wine | 6.223 | 6.223 | 6.223 | 6.223 | 6.223 | 6.205 | 6.223 |
| WordsSynonyms | 15.184 | 15.036 | 14.947 | 14.951 | 14.965 | 14.959 | 15.196 |
| Worms | 14.043 | 13.860 | 13.791 | 13.777 | 14.696 | 13.772 | 14.696 |
| WormsTwoClass | 13.699 | 13.440 | 13.322 | 13.337 | 15.076 | 13.390 | 15.076 |
| synthetic_control | 15.472 | 15.367 | 15.337 | 15.338 | 15.330 | 15.336 | 15.472 |
| uWaveGestureLibrary_X | 18.844 | 18.562 | N/A | N/A | N/A | N/A | N/A |

K. Time-series prediction: DTW loss achieved when using random init

| Dataset | Soft-DTW loss $\gamma = 1$ | $\gamma = 0.1$ | $\gamma = 0.01$ | $\gamma = 0.001$ | Euclidean loss |
|--------------------------------|----------------------------|----------------|-----------------|------------------|----------------|
| 50words | 6.473 | 4.921 | 4.999 | 6.489 | 18.734 |
| Adiac | 0.094 | 0.074 | 0.078 | 0.109 | 0.103 |
| ArrowHead | 1.851 | 1.708 | 1.933 | 1.909 | 2.073 |
| Beef | 12.229 | 8.688 | 10.244 | 9.126 | 22.228 |
| BeetleFly | 35.037 | 25.439 | 27.588 | 23.494 | 50.610 |
| BirdChicken | 31.878 | 19.914 | 25.100 | 14.981 | 30.693 |
| CBF | 10.802 | 9.263 | 9.595 | 10.151 | 12.868 |
| Car | 1.724 | 2.307 | 2.202 | 1.318 | 1.588 |
| ChlorineConcentration | 7.876 | 2.108 | 2.331 | 1.735 | 0.769 |
| CinC_ECG_torso | 45.675 | 26.337 | 23.567 | 24.550 | 48.171 |
| Coffee | 0.914 | 0.727 | 1.662 | 1.883 | 0.660 |
| Computers | 92.584 | 84.723 | 78.953 | 75.435 | 235.208 |
| Cricket_X | 9.394 | 8.042 | 7.123 | 7.226 | 12.080 |
| Cricket_Y | 11.989 | 9.643 | 9.534 | 9.545 | 15.002 |
| Cricket_Z | 9.161 | 6.889 | 6.585 | 7.200 | 11.003 |
| DiatomSizeReduction | 1.182 | 0.922 | 0.820 | 0.897 | 1.203 |
| DistalPhalanxOutlineAgeGroup | 0.426 | 0.291 | 0.541 | 0.496 | 0.231 |
| DistalPhalanxOutlineCorrect | 0.494 | 0.476 | 0.564 | 0.591 | 0.351 |
| DistalPhalanxTW | 0.441 | 0.330 | 0.305 | 1.214 | 0.231 |
| ECG200 | 1.874 | 1.716 | 1.884 | 1.734 | 1.905 |
| ECG5000 | 4.895 | 4.705 | 4.543 | 4.441 | 5.463 |
| ECGFiveDays | 1.834 | 1.944 | 1.699 | 1.642 | 2.220 |
| Earthquakes | 74.738 | 59.973 | 60.877 | 57.827 | 147.980 |
| ElectricDevices | 20.186 | 15.125 | 15.218 | 15.287 | 37.121 |
| FISH | 0.464 | 0.429 | 0.354 | 0.459 | 0.462 |
| FaceAll | 9.317 | 7.451 | 7.902 | 7.276 | 10.716 |
| FaceFour | 19.564 | 20.881 | 28.150 | 28.839 | 46.841 |
| FacesUCR | 15.359 | 14.643 | 16.143 | 17.428 | 28.576 |
| Gun_Point | 0.896 | 0.805 | 0.923 | 0.834 | 0.858 |
| Ham | 20.154 | 17.931 | 17.786 | 17.413 | 24.340 |
| Haptics | 16.174 | 17.775 | 17.142 | 17.423 | 23.130 |
| Herring | 1.000 | 0.712 | 0.666 | 0.762 | 0.865 |
| InsectWingbeatSound | 3.460 | 2.823 | 2.458 | 2.220 | 5.437 |
| ItalyPowerDemand | 0.911 | 0.893 | 0.711 | 0.798 | 0.881 |
| LargeKitchenAppliances | 63.153 | 60.739 | 60.157 | 61.841 | 266.853 |
| Lighting2 | 73.293 | 66.341 | 65.335 | 66.881 | 147.668 |
| Lighting7 | 44.446 | 42.699 | 40.608 | 41.502 | 68.902 |
| Meat | 0.162 | 0.242 | 0.246 | 0.650 | 0.099 |
| MedicalImages | 1.023 | 0.853 | 0.708 | 0.778 | 1.211 |
| MiddlePhalanxOutlineAgeGroup | 0.343 | 0.347 | 0.570 | 0.400 | 0.312 |
| MiddlePhalanxOutlineCorrect | 0.278 | 0.204 | 0.227 | 0.202 | 0.182 |
| MiddlePhalanxTW | 0.251 | 0.153 | 0.445 | 0.314 | 0.132 |
| MoteStrain | 10.188 | 9.986 | 11.119 | 10.250 | 11.183 |
| NonInvasiveFatalECG_Thorax1 | 1.002 | 0.920 | 0.675 | 0.634 | 1.219 |
| OSULeaf | 15.125 | 11.722 | 11.086 | 10.775 | 30.739 |
| OliveOil | 0.476 | 0.683 | 2.082 | 2.076 | 0.020 |
| PhalangesOutlinesCorrect | 0.352 | 0.216 | 0.352 | 0.338 | 0.170 |
| Phoneme | 160.536 | 150.017 | 148.175 | 145.093 | 219.704 |
| Plane | 0.619 | 0.564 | 0.834 | 0.788 | 0.630 |
| ProximalPhalanxOutlineAgeGroup | 0.134 | 0.062 | 0.105 | 0.118 | 0.046 |
| ProximalPhalanxOutlineCorrect | 0.129 | 0.047 | 0.089 | 0.128 | 0.044 |
| ProximalPhalanxTW | 0.154 | 0.077 | 0.102 | 0.150 | 0.055 |
| RefrigerationDevices | 108.421 | 93.519 | 89.370 | 89.873 | 160.361 |
| ShapeletSim | 102.413 | 70.455 | 71.156 | 72.094 | 108.936 |
| ShapesAll | 10.391 | 9.027 | 7.850 | 7.207 | 18.348 |
| SonyAIBORobotSurface | 4.453 | 4.494 | 4.318 | 4.910 | 4.388 |
| SonyAIBORobotSurfaceII | 8.072 | 8.302 | 7.758 | 8.669 | 8.628 |
| Strawberry | 0.123 | 0.088 | 0.137 | 0.100 | 0.081 |
| SwedishLeaf | 1.486 | 1.277 | 1.316 | 1.169 | 1.633 |
| Symbols | 17.963 | 14.039 | 15.172 | 13.192 | 38.268 |
| ToeSegmentation1 | 23.866 | 22.987 | 26.056 | 22.401 | 35.806 |
| ToeSegmentation2 | 41.450 | 33.100 | 30.931 | 31.106 | 61.899 |
| Trace | 0.563 | 0.379 | 0.352 | 0.279 | 0.582 |
| TwoLeadECG | 0.441 | 0.394 | 0.318 | 0.320 | 0.336 |
| Two_Patterns | 15.035 | 10.100 | 10.588 | 8.584 | 35.923 |
| UWaveGestureLibraryAll | 40.324 | 28.975 | 26.193 | 25.897 | 93.019 |
| Wine | 0.164 | 0.203 | 1.417 | 0.958 | 0.028 |
| WordsSynonyms | 12.466 | 10.437 | 9.165 | 9.219 | 32.003 |
| Worms | 81.236 | 63.938 | 60.950 | 59.995 | 114.528 |
| WormsTwoClass | 78.455 | 66.609 | 60.207 | 61.685 | 122.619 |
| synthetic_control | 7.709 | 5.315 | 5.390 | 5.506 | 7.690 |
| uWaveGestureLibrary_X | 13.096 | 9.995 | 10.143 | 9.433 | 19.995 |
| uWaveGestureLibrary_Y | 9.793 | 7.272 | 7.327 | 7.225 | 17.706 |
| uWaveGestureLibrary_Z | 11.883 | 8.909 | 8.494 | 8.416 | 20.092 |
| wafer | 1.049 | 0.473 | 0.386 | 0.496 | 2.636 |
| yoga | 2.932 | 2.431 | 1.995 | 3.309 | 4.305 |

L. Time-series prediction: DTW loss achieved when using Euclidean init

| Dataset | Soft-DTW loss $\gamma = 1$ | $\gamma = 0.1$ | $\gamma = 0.01$ | $\gamma = 0.001$ | Euclidean loss |
|--------------------------------|----------------------------|----------------|-----------------|------------------|----------------|
| 50words | 6.330 | 5.628 | 4.885 | 4.553 | 18.734 |
| Adiac | 0.082 | 0.076 | 0.064 | 0.079 | 0.103 |
| ArrowHead | 1.823 | 2.016 | 1.762 | 2.106 | 2.073 |
| Beef | 7.250 | 6.940 | 7.146 | 3.757 | 22.228 |
| BeetleFly | 32.430 | 26.600 | 27.199 | 29.003 | 50.610 |
| BirdChicken | 24.952 | 22.600 | 19.914 | 20.540 | 30.693 |
| CBF | 10.744 | 8.978 | 9.215 | 8.398 | 12.868 |
| Car | 0.906 | 0.812 | 0.709 | 0.740 | 1.588 |
| ChlorineConcentration | 6.018 | 0.979 | 0.695 | 0.698 | 0.769 |
| CinC_ECG_torso | 29.892 | 18.638 | 19.635 | 19.191 | 48.171 |
| Coffee | 0.870 | 0.582 | 0.511 | 0.496 | 0.660 |
| Computers | 86.619 | 79.250 | 82.215 | 81.417 | 235.208 |
| Cricket_X | 10.954 | 8.200 | 7.932 | 8.296 | 12.080 |
| Cricket_Y | 11.901 | 10.150 | 10.265 | 9.574 | 15.002 |
| Cricket_Z | 9.714 | 7.760 | 7.544 | 8.041 | 11.003 |
| DiatomSizeReduction | 0.964 | 0.852 | 0.874 | 0.869 | 1.203 |
| DistalPhalanxOutlineAgeGroup | 0.403 | 0.206 | 0.175 | 0.177 | 0.231 |
| DistalPhalanxOutlineCorrect | 0.515 | 0.310 | 0.300 | 0.262 | 0.351 |
| DistalPhalanxTW | 0.468 | 0.228 | 0.186 | 0.178 | 0.231 |
| ECG200 | 1.907 | 1.541 | 1.565 | 1.536 | 1.905 |
| ECG5000 | 4.737 | 4.190 | 4.398 | 4.148 | 5.463 |
| ECGFiveDays | 1.584 | 1.396 | 1.322 | 1.335 | 2.220 |
| Earthquakes | 71.461 | 55.819 | 56.504 | 57.153 | 147.980 |
| ElectricDevices | 19.499 | 15.045 | 14.999 | 15.228 | 37.121 |
| FISH | 0.439 | 0.353 | 0.319 | 0.318 | 0.462 |
| FaceAll | 9.309 | 8.687 | 7.803 | 7.853 | 10.716 |
| FaceFour | 20.483 | 20.411 | 21.259 | 21.444 | 46.841 |
| FacesUCR | 14.984 | 14.530 | 14.403 | 14.729 | 28.576 |
| Gun_Point | 0.447 | 0.368 | 0.300 | 0.297 | 0.858 |
| Ham | 16.152 | 14.717 | 12.252 | 13.424 | 24.340 |
| Haptics | 15.177 | 14.275 | 12.394 | 11.931 | 23.130 |
| Herring | 0.310 | 0.305 | 0.292 | 0.249 | 0.865 |
| InsectWingbeatSound | 3.104 | 2.346 | 2.186 | 2.036 | 5.437 |
| ItalyPowerDemand | 0.802 | 0.595 | 0.623 | 0.654 | 0.881 |
| LargeKitchenAppliances | 61.531 | 63.834 | 59.116 | 57.219 | 266.853 |
| Lighting2 | 65.602 | 62.240 | 61.561 | 60.826 | 147.668 |
| Lighting7 | 43.930 | 41.668 | 40.535 | 39.422 | 68.902 |
| Meat | 0.173 | 0.140 | 0.103 | 0.077 | 0.099 |
| MedicalImages | 0.932 | 0.671 | 0.615 | 0.651 | 1.211 |
| MiddlePhalanxOutlineAgeGroup | 0.283 | 0.200 | 0.134 | 0.154 | 0.312 |
| MiddlePhalanxOutlineCorrect | 0.269 | 0.169 | 0.133 | 0.148 | 0.182 |
| MiddlePhalanxTW | 0.225 | 0.126 | 0.111 | 0.094 | 0.132 |
| MoteStrain | 9.704 | 9.321 | 9.385 | 10.156 | 11.183 |
| NonInvasiveFatalECG_Thorax1 | 0.921 | 0.736 | 0.540 | 0.536 | 1.219 |
| OSULeaf | 16.168 | 14.372 | 13.354 | 12.350 | 30.739 |
| OliveOil | 0.179 | 0.298 | 0.034 | 0.026 | 0.020 |
| PhalangesOutlinesCorrect | 0.328 | 0.231 | 0.161 | 0.153 | 0.170 |
| Phoneme | 173.501 | 158.036 | 159.293 | 158.776 | 219.704 |
| Plane | 0.454 | 0.343 | 0.311 | 0.370 | 0.630 |
| ProximalPhalanxOutlineAgeGroup | 0.137 | 0.056 | 0.039 | 0.036 | 0.046 |
| ProximalPhalanxOutlineCorrect | 0.118 | 0.046 | 0.033 | 0.030 | 0.044 |
| ProximalPhalanxTW | 0.164 | 0.067 | 0.054 | 0.045 | 0.055 |
| RefrigerationDevices | 107.693 | 95.458 | 90.328 | 91.687 | 160.361 |
| ShapeletSim | 106.805 | 73.626 | 72.985 | 73.987 | 108.936 |
| ShapesAll | 11.946 | 7.724 | 7.127 | 7.522 | 18.348 |
| SonyAIBORobotSurface | 4.068 | 3.619 | 3.400 | 3.737 | 4.388 |
| SonyAIBORobotSurfaceII | 6.954 | 6.585 | 6.410 | 6.593 | 8.628 |
| Strawberry | 0.110 | 0.082 | 0.071 | 0.069 | 0.081 |
| SwedishLeaf | 1.438 | 1.151 | 1.095 | 1.108 | 1.633 |
| Symbols | 14.717 | 12.040 | 15.229 | 16.199 | 38.268 |
| ToeSegmentation1 | 24.293 | 20.905 | 22.914 | 22.566 | 35.806 |
| ToeSegmentation2 | 44.439 | 36.333 | 35.804 | 41.121 | 61.899 |
| Trace | 0.578 | 0.331 | 0.272 | 0.250 | 0.582 |
| TwoLeadECG | 0.157 | 0.131 | 0.129 | 0.149 | 0.336 |
| Two_Patterns | 14.843 | 11.616 | 11.622 | 11.059 | 35.923 |
| UWaveGestureLibraryAll | 42.336 | 30.864 | 27.572 | 26.573 | 93.019 |
| Wine | 0.069 | 0.263 | 0.045 | 0.029 | 0.028 |
| WordsSynonyms | 12.654 | 10.089 | 9.887 | 8.946 | 32.003 |
| Worms | 74.589 | 71.946 | 70.245 | 67.669 | 114.528 |
| WormsTwoClass | 81.311 | 61.360 | 62.281 | 74.672 | 122.619 |
| synthetic_control | 7.455 | 5.509 | 5.374 | 5.369 | 7.690 |
| uWaveGestureLibrary_X | 14.151 | 10.065 | 9.231 | 9.197 | 19.995 |
| uWaveGestureLibrary_Y | 9.852 | 7.285 | 7.066 | 7.036 | 17.706 |
| uWaveGestureLibrary_Z | 12.019 | 8.893 | 8.453 | 8.513 | 20.092 |
| wafer | 1.125 | 0.838 | 0.765 | 0.818 | 2.636 |
| yoga | 2.510 | 2.209 | 1.807 | 1.851 | 4.305 |