
Can Deep Reinforcement Learning Solve Erdos-Selfridge-Spencer Games?

Maithra Raghu^{1,2} Alex Irpan¹ Jacob Andreas³ Robert Kleinberg² Quoc Le¹ Jon Kleinberg²

Abstract

Deep reinforcement learning has achieved many recent successes, but our understanding of its strengths and limitations is hampered by the lack of rich environments in which we can fully characterize optimal behavior, and correspondingly diagnose individual actions against such a characterization. Here we consider a family of combinatorial games, arising from work of Erdos, Selfridge, and Spencer, and we propose their use as environments for evaluating and comparing different approaches to reinforcement learning. These games have a number of appealing features: they are challenging for current learning approaches, but they form (i) a low-dimensional, simply parametrized environment where (ii) there is a linear closed form solution for optimal behavior from any state, and (iii) the difficulty of the game can be tuned by changing environment parameters in an interpretable way. We use these Erdos-Selfridge-Spencer games not only to compare different algorithms, but test for generalization, make comparisons to supervised learning, analyze multiagent play, and even develop a self play algorithm.

1. Introduction

Deep reinforcement learning has seen many remarkable successes over the past few years (Mnih et al., 2015; Silver et al., 2017). But developing learning algorithms that are robust across tasks and policy representations remains a challenge (Henderson et al., 2017). Standard benchmarks like MuJoCo and Atari provide rich settings for experimentation, but the specifics of the underlying environments differ from each other in multiple ways, and hence determining the principles underlying any particular form of sub-optimal

behavior is difficult. Optimal behavior in these environments is generally complex and not fully characterized, so algorithmic success is generally associated with high scores, typically on a copy of the training environment making it hard to analyze where errors are occurring or evaluate generalization.

An ideal setting for studying the strengths and limitations of reinforcement learning algorithms would be (i) a simply parametrized family of environments where (ii) optimal behavior can be completely characterized and (iii) the environment is rich enough to support interaction and multiagent play.

To produce such a family of environments, we look in a novel direction – to a set of two-player combinatorial games with their roots in work of Erdos and Selfridge (Erdos & Selfridge, 1973), and placed on a general footing by Spencer (1994). Roughly speaking, these *Erdos-Selfridge-Spencer (ESS) games* are games in which two players take turns selecting objects from some combinatorial structure, with the feature that optimal strategies can be defined by potential functions derived from conditional expectations over random future play.

These ESS games thus provide an opportunity to capture the general desiderata noted above, with a clean characterization of optimal behavior and a set of instances that range from easy to very hard as we sweep over a simple set of tunable parameters. We focus in particular on one of the best-known games in this genre, *Spencer’s attacker-defender game* (also known as the “tenure game”; Spencer, 1994), in which — roughly speaking — an *attacker* advances a set of pieces up the levels of a board, while a *defender* destroys subsets of these pieces to try prevent any of them from reaching the final level (Figure 1). An instance of the game can be parametrized by two key quantities. The first is the number of levels K , which determines both the size of the state space and the approximate length of the game; the latter is directly related to the sparsity of win/loss signals as rewards. The second quantity is a *potential function* ϕ , whose magnitude characterizes whether the instance favors the defender or attacker, and how much “margin of error” there is in optimal play.

The environment therefore allows us to study learning by the defender and attacker, separately or concurrently in mul-

¹Google Brain ²Cornell University ³University of California, Berkeley. Correspondence to: Maithra Raghu <maithrar@gmail.com>.

tiagent and self-play. In the process, we are able to develop insights about the robustness of solutions to changes in the environment. These types of analyses have been long-standing goals, but they have generally been approached much more abstractly, given the difficulty in characterizing step-by-step optimality in non-trivial environments such as this one. Because we have a move-by-move characterization of optimal play, we can go beyond simple measures of reward based purely on win/loss outcomes and use supervised learning techniques to pinpoint the exact location of the errors in a trajectory of play.

The main contributions of this work are thus the following:

1. We develop these combinatorial games as environments for studying the behavior of reinforcement learning algorithms in a setting where it is possible to characterize optimal play and to tune the underlying difficulty using natural parameters.
2. We show how reinforcement learning algorithms in this domain are able to learn generalizable policies in addition to simply achieving high performance, and through new combinatorial results about the domain, we are able to develop strong methods for *multiagent* play that enhance generalization.
3. Through an extension of our combinatorial results, we show how this domain lends itself to a subtle self-play algorithm, which achieves a significant improvement in performance.
4. We can characterize optimal play at a move-by-move level and thus compare the performance of a deep RL agent to one trained using supervised learning on move-by-move decisions. By doing so, we discover an intriguing phenomenon: while the supervised learning agent is more accurate on individual move decisions than the RL agent, the RL agent is better at playing the game! We further interpret this result by defining a notion of *fatal mistakes*, and showing that while the deep RL agent makes more mistakes overall, it makes fewer fatal mistakes.

In summary, we present learning and generalization experiments for a variety of commonly used model architectures and learning algorithms. We show that despite the superficially simple structure of the game, it provides both significant challenges for standard reinforcement learning approaches and a number of tools for precisely understanding those challenges.

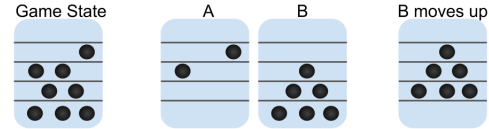


Figure 1. One turn in an ESS Attacker-Defender game. The attacker proposes a partition A, B of the current game state, and the defender chooses one set to destroy (in this case A). Pieces in the remaining set (B) then move up a level to form the next game state.

2. Erdos-Selfridge-Spencer Attacker Defender Game

We first introduce the family of Attacker-Defender Games (Spencer, 1994), a set of games with two properties that yield a particularly attractive testbed for deep reinforcement learning: the ability to continuously vary the difficulty of the environment through two parameters, and the existence of a closed form solution that is expressible as a *linear model*.

An Attacker-Defender game involves two players: an attacker who moves pieces, and a defender who destroys pieces. An instance of the game has a set of *levels* numbered from 0 to K , and N pieces that are initialized across these levels. The attacker’s goal is to get at least one of their pieces to level K , and the defender’s goal is to destroy all N pieces before this can happen. In each turn, the attacker proposes a partition A, B of the pieces still in play. The defender then chooses one of the sets to destroy and remove from play. All pieces in the other set are moved up a level. The game ends when either one or more pieces reach level K , or when all pieces are destroyed. Figure 1 shows one turn of play.

With this setup, varying the number of levels K or the number of pieces N changes the difficulty for the attacker and the defender. One of the most striking aspects of the Attacker-Defender game is that it is possible to make this trade-off precise, and en route to doing so, also identify a *linear optimal policy*.

We start with a simple special case — rather than initializing the board with pieces placed arbitrarily, we require the pieces to all start at level 0. In this special case, we can directly think of the game’s difficulty in terms of the number of levels K and the number of pieces N .

Theorem 1. *Consider an instance of the Attacker-Defender game with K levels and N pieces, with all N pieces starting at level 0. Then if $N < 2^K$, the defender can always win.*

There is a simple proof of this fact: the defender simply always destroys the larger one of the sets A or B . In this way, the number of pieces is reduced by at least a factor of two in each step; since a piece must travel K steps in order

to reach level K , and $N < 2^K$, no piece will reach level K .

When we move to the more general case in which the board is initialized at the start of the game with pieces placed at arbitrary levels, it will be less immediately clear how to define the “larger” one of the sets A or B . We therefore describe a second proof of Theorem 1 that will be useful in these more general settings. This second proof, due to Spencer (1994), uses Erdos’s probabilistic method and proceeds as follows.

For any attacker strategy, assume the defender plays randomly. Let T be a random variable for the number of pieces that reach level K . Then $T = \sum T_i$ where T_i is the indicator that piece i reaches level K . But then $E[T] = \sum E[T_i] = \sum_i 2^{-K}$: as the defender is playing randomly, any piece has probability $1/2$ of advancing a level and $1/2$ of being destroyed. As all the pieces start at level 0, they must advance K levels to reach the top, which happens with probability 2^{-K} . But now, by choice of N , we have that $\sum_i 2^{-K} = N2^{-K} < 1$. Since T is an integer random variable, $E[T] < 1$ implies that the distribution of T has nonzero mass at 0 - in other words there is some set of choices for the defender that guarantees destroying all pieces. This means that the attacker does not have a strategy that wins with probability 1 against random play by the defender; since the game has the property that one player or the other must be able to force a win, it follows that the defender can force a win. This completes the proof.

Now consider the general form of the game, in which the initial configuration can have pieces at arbitrary levels. Thus, at any point in time, the state of the game can be described by a K -dimensional vector $S = (n_0, n_1, \dots, n_K)$, with n_i the number of pieces at level i .

Extending the argument used in the second proof above, we note that a piece at level l has a $2^{-(K-l)}$ chance of survival under random play. This motivates the following *potential function* on states:

Definition 1. Potential Function: *Given a game state $S = (n_0, n_1, \dots, n_K)$, we define the potential of the state as $\phi(S) = \sum_{i=0}^K n_i 2^{-(K-i)}$.*

Note that this is a *linear* function on the input state, expressible as $\phi(S) = w^T \cdot S$ for w a vector with $w_l = 2^{-(K-l)}$. We can now state the following generalization of Theorem 1, again due to Spencer (1994).

Theorem 2 ((Spencer, 1994)). *Consider an instance of the Attacker-Defender game that has K levels and N pieces, with pieces placed anywhere on the board, and let the initial state be S_0 . Then*

- (a) *If $\phi(S_0) < 1$, the defender can always win*
- (b) *If $\phi(S_0) \geq 1$, the attacker can always win.*

One way to prove part (a) of this theorem is by directly extending the proof of Theorem 1, with $E[T] = \sum E[T_i] = \sum_i 2^{-(K-l_i)}$ where l_i is the level of piece i . After noting that $\sum_i 2^{-(K-l_i)} = \phi(S_0) < 1$ by our definition of the potential function and choice of S_0 , we finish off as in Theorem 1.

This definition of the potential function gives a natural, concrete strategy for the defender: the defender simply destroys whichever of A or B has higher potential. We claim that if $\phi(S_0) < 1$, then this strategy guarantees that any subsequent state S will also have $\phi(S) < 1$. Indeed, suppose (renaming the sets if necessary) that A has a potential at least as high as B ’s, and that A is the set destroyed by the defender. Since $\phi(B) \leq \phi(A)$ and $\phi(A) + \phi(B) = \phi(S) < 1$, the next state has potential $2\phi(B)$ (double the potential of B as all pieces move up a level) which is also less than 1. In order to win, the attacker would need to place a piece on level K , which would produce a set of potential at least 1. Since all sets under the defender’s strategy have potential strictly less than 1, it follows that no piece ever reaches level K .

For $\phi(S_0) \geq 1$, Spencer (1994) proves part (b) of the theorem by defining an optimal strategy for the attacker, using a greedy algorithm to pick two sets A, B each with potential ≥ 0.5 . For our purposes, the proof from Spencer (1994) results in an intractably large action space for the attacker; we therefore (in Theorem 3 later in the paper) define a new kind of attacker — the *prefix-attacker* — and we prove its optimality. These new combinatorial insights about the game enable us to later perform multiagent play, and subsequently self-play.

3. Related Work

The Atari benchmark (Mnih et al., 2015) is a well known set of tasks, ranging from easy to solve (Breakout, Pong) to very difficult (Montezuma’s Revenge). Duan et al. (2016) proposed a set of continuous environments, implemented in the MuJoCo simulator (Todorov et al., 2012). An advantage of physics based environments is that they can be varied continuously by changing physics parameters (Rajeswaran et al., 2016), or by randomizing rendering (Tobin et al., 2017). DeepMind Lab (Beattie et al., 2016) is a set of 3D navigation based environments. OpenAI Gym (Brockman et al., 2016) contains both the Atari and MuJoCo benchmarks, as well as classic control environments like Cartpole (Stephenson, 1909) and algorithmic tasks like copying an input sequence. The difficulty of algorithmic tasks can be easily increased by increasing the length of the input. Automated game playing in algorithmic settings has also been explored outside of RL (Bouzy & Metivier, 2010; Zinkevich et al., 2011; Bowling et al., 2017; Littman, 1994). Our proposed benchmark merges properties of both

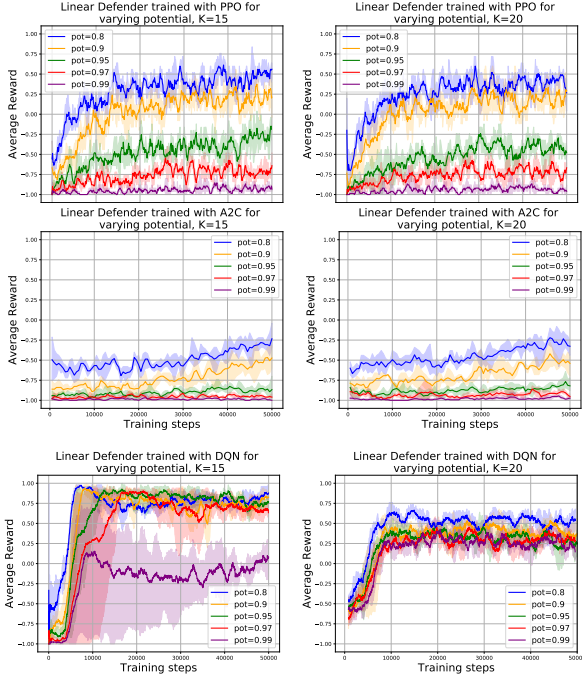


Figure 2. Training a linear network to play as the defender agent with PPO, A2C and DQN. A linear model is theoretically expressive enough to learn the optimal policy for the defender agent. In practice, we see that for many difficulty settings and algorithms, RL struggles to learn the optimal policy and performs more poorly than when using deeper models (compare to Figure 3). An exception to this is DQN which performs relatively well on all difficulty settings.

the algorithmic tasks and physics-based tasks, letting us increase difficulty by discrete changes in length or continuous changes in potential.

4. Deep Reinforcement Learning on the Attacker-Defender Game

From Section 2, we see that the Attacker-Defender games are a family of environments with a difficulty knob that can be continuously adjusted through the start state potential $\phi(S_0)$ and the number of levels K . In this section, we describe a set of baseline results on Attacker-Defender games that motivate the exploration in the remainder of this paper. We set up the Attacker-Defender environment as follows: the game state is represented by a $K + 1$ dimensional vector for levels 0 to K , with coordinate l representing the number of pieces at level l . For the defender agent, the input is the concatenation of the partition A, B , giving a $2(K + 1)$ dimensional vector. The start state S_0 is initialized randomly from a distribution over start states of a certain potential.

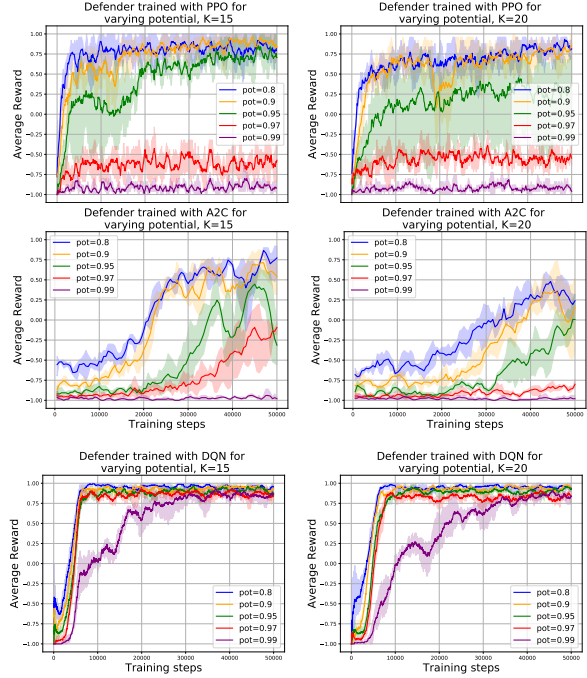


Figure 3. Training defender agent with PPO, A2C and DQN for varying values of potentials and two different choices of K with a deep network. Overall, we see significant improvements over using a linear model. DQN performs the most stably, while A2C tends to fare worse than both PPO and DQN.

4.1. Training a Defender Agent on Varying Environment Difficulties

We first look at training a defender agent against an attacker that randomly chooses between (mostly) playing optimally, and (occasionally) playing suboptimally for exploration (with the *Disjoint Support Strategy*, described in the Appendix.) Recall from the specification of the potential function, in Definition 1 and Theorem 2, that the defender has a *linear optimal policy*: given an input partition A, B , the defender simply computes $\phi(A) - \phi(B)$, with $\phi(A) = \sum_{i=0}^K a_i w_i$, where a_i is the number of pieces in A at level i ; $\phi(B) = \sum_{i=0}^K b_i w_i$, where b_i is the number of pieces in B at level i ; and $w_i = 2^{-(K-i)}$ is the weighting defining the potential function.

When training the defender agent with RL, we have two choices of difficulty parameters. The potential of the start state, $\phi(S_0)$, changes how close to optimality the defender has to play, with values close to 1 giving much less leeway for mistakes in valuing the two sets. Changing K , the number of levels, directly affects the sparsity of the reward, with higher K resulting in longer games and less feedback. Additionally, K also greatly increases the number of possible states and game trajectories (see Theorem 4 in the Appendix).

4.1.1. EVALUATING DEEP RL

As the optimal policy can be expressed as a linear network, we first try training a linear model for the defender agent. We evaluate Proximal Policy Optimization (PPO) (Schulman et al., 2017), Advantage Actor Critic (A2C) (Mnih et al., 2016), and Deep Q-Networks (DQN) (Mnih et al., 2015), using the OpenAI Baselines implementations (Hesse et al., 2017). Both PPO and A2C find it challenging to learn the harder difficulty settings of the game, and perform better with deeper networks (Figure 2). DQN performs surprisingly well, but we see some improvement in performance variance with a deeper model. In summary, while the policy can theoretically be expressed with a linear model, empirically we see gains in performance and a reduction in variance when using deeper networks (c.f. Figures 3, 4.)

Having evaluated the performance of linear models, we turn to using deeper neural networks for our policy net. (A discussion of the hyperparameters used is provided in the appendix.) Identically to above, we evaluate PPO, A2C and DQN on varying start state potentials and K . Each algorithm is run with 3 random seeds, and in all plots we show minimum, mean, and maximum performance. Results are shown in Figures 3, 4. Note that all algorithms show variation in performance across different settings of potentials and K , and show noticeable drops in performance with harder difficulty settings. When varying potential in Figure 3, both PPO and A2C show larger variation than DQN. A2C shows the greatest variation and worst performance out of all three methods.

5. Generalization in RL and Multiagent Learning

In the previous section we trained defender agents using popular RL algorithms, and then evaluated the performance of the trained agents on the environment. However, noting that the Attacker-Defender game has a known optimal policy that works perfectly in any game setting, we can evaluate our RL algorithms on *generalization*, not just performance.

We take a setting of parameters, start state potential 0.95 and $K = 5, 10, 15, 20, 25$ where we have seen the RL agent perform well, and change the procedural attacker policy between train and test. In detail, we train RL agents for the defender against an attacker playing optimally, and test these agents for the defender on the disjoint support attacker. The results are shown in Figure 5 where we can see that while performance is high, the RL agents fail to generalize against an opponent that is theoretically easier. This leads to the natural question of how we might achieve stronger generalization in our environment.

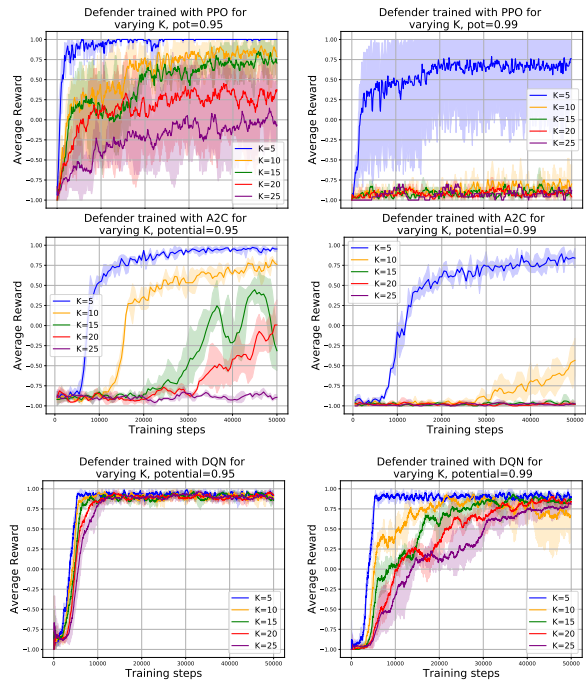


Figure 4. Training defender agent with PPO, A2C and DQN for varying values of K and two different choices of potential (left and right column) with a deep network. All three algorithms show a noticeable variation in performance over different difficulty settings. Again, we notice that DQN performs the best, with PPO doing reasonably for lower potential, but not for higher potentials. A2C tends to fare worse than both PPO and DQN.

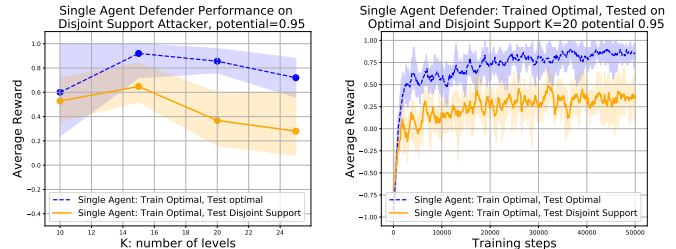


Figure 5. Plot showing overfitting to opponent strategies. A defender agent is trained on the optimal attacker, and then tested on (a) another optimal attacker environment (b) the disjoint support attacker environment. The left pane shows the resulting performance drop when switching to testing on the same opponent strategy as in training to a different opponent strategy. The right pane shows the result of testing on an optimal attacker vs a disjoint support attacker during training. We see that performance on the disjoint support attacker converges to a significantly lower level than the optimal attacker.

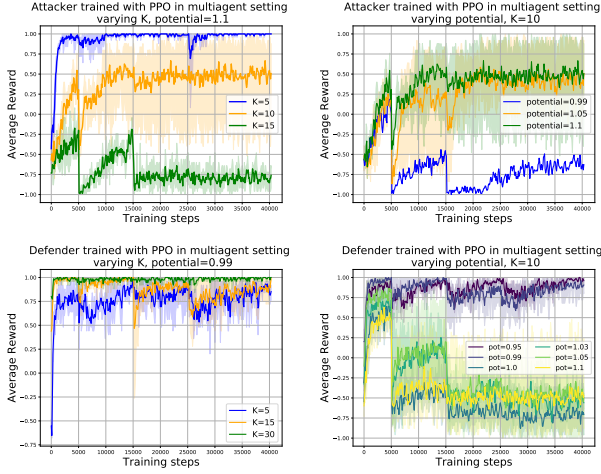


Figure 6. Performance of attacker and defender agents when learning in a multiagent setting. In the top panes, solid lines denote attacker performance. In the bottom panes, solid lines are defender performance. The sharp changes in performance correspond to the times we switch which agent is training. We note that the defender performs much better in the multiagent setting. Furthermore, the attacker loses to the defender for potential 1.1 at $K = 15$, despite winning against the optimal defender in Figure 11 in the Appendix. We also see (right panes) that the attacker has higher variance and sharper changes in its performance even under conditions when it is guaranteed to win.

5.1. Training an Attacker Agent

One way to mitigate this overfitting issue is to set up a method of also training the attacker, so that we can train the defender against a learned attacker, or in a multiagent setting. However, determining the correct setup to train the attacker agent first requires devising a tractable parametrization of the action space. A naive implementation of the attacker would be to have the policy output how many pieces should be allocated to A for each of the $K + 1$ levels (as in the construction from Spencer (1994)). This can grow very rapidly in K , which is clearly impractical. To address this, we first prove a new theorem that enables us to parametrize an optimal attacker with a much smaller action space.

Theorem 3. *For any Attacker-Defender game with K levels, start state S_0 and $\phi(S_0) \geq 1$, there exists a partition A, B such that $\phi(A) \geq 0.5$, $\phi(B) \geq 0.5$, and for some l , A contains pieces of level $i > l$, and B contains all pieces of level $i < l$.*

Proof. For each $l \in \{0, 1, \dots, K\}$, let A_l be the set of all pieces from levels K down to and excluding level l , with $A_K = \emptyset$. We have $\phi(A_{i+1}) \leq \phi(A_i)$, $\phi(A_K) = 0$ and $\phi(A_0) = \phi(S_0) \geq 1$. Thus, there exists an l such that $\phi(A_l) < 0.5$ and $\phi(A_{l-1}) \geq 0.5$. If $\phi(A_{l-1}) = 0.5$, we set $A_{l-1} = A$ and B the complement, and are done. So assume $\phi(A_l) < 0.5$ and $\phi(A_{l-1}) > 0.5$

Since A_{l-1} only contains pieces from levels K to l , potentials $\phi(A_l)$ and $\phi(A_{l-1})$ are both integer multiples of $2^{-(K-l)}$, the value of a piece in level l . Letting $\phi(A_l) = n \cdot 2^{-(K-l)}$ and $\phi(A_{l-1}) = m \cdot 2^{-(K-l)}$, we are guaranteed that level l has $m - n$ pieces, and that we can move $k < m - n$ pieces from A_{l-1} to A_l such that the potential of the new set equals 0.5. \square

This theorem gives a different way of constructing and parametrizing an optimal attacker. The attacker outputs a level l . The environment assigns all pieces before level l to A , all pieces after level l to B , and splits level l among A and B to keep the potentials of A and B as close as possible. Theorem 3 guarantees the optimal policy is representable, and the action space is linear instead of exponential in K .

With this setup, we train an attacker agent against the optimal defender with PPO, A2C, and DQN. The DQN results were very poor, and so we show results for just PPO and A2C. In both algorithms we found there was a large variation in performance when changing K , which now affects both reward sparsity and action space size. We observe less outright performance variability with changes in potential for small K but see an increase in the variance (Figure 11 in Appendix).

5.2. Learning through Multiagent Play

With this attacker training, we can now look at learning in a multiagent setting. We first explore the effects of varying the potential and K as shown in Figure 6. Overall, we find that the attacker fares worse in multiagent play than in the single agent setting. In particular, note that in the top left pane of Figure 6, we see that the attacker loses to the defender even with $\phi(S_0) = 1.1$ for $K = 15$. We can compare this to Figure 11 in the Appendix where with PPO, we see that with $K = 15$, and potential 1.1, the single agent attacker succeeds in winning against the optimal defender.

5.3. Single Agent and Multiagent Generalization Across Opponent Strategies

Finally, we return again to our defender agent, and test generalization between the single and multiagent settings. We train a defender agent in the single agent setting against the optimal attacker, and test on an attacker that only uses the Disjoint Support strategy. We also test a defender trained in the multiagent setting (which has never seen any hardcoded strategy of this form) on the Disjoint Support attacker. The results are shown in Figure 7. We find that the defender trained as part of a multiagent setting generalizes noticeably better than the single agent defender. We show the results over 8 random seeds and plot the mean (solid line) and shade in the standard deviation.

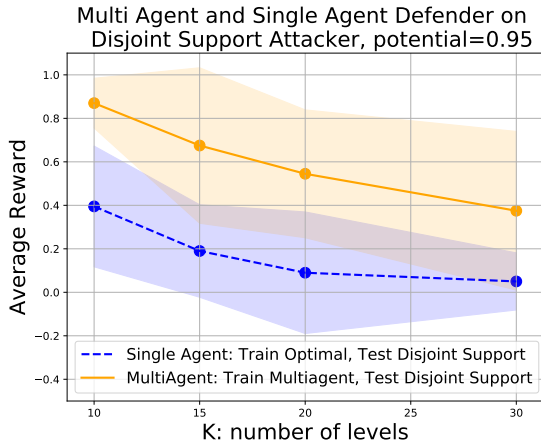


Figure 7. Results for generalizing to different attacker strategies with single agent defender and multiagent defender. The figure single agent defender trained on the optimal attacker and then tested on the disjoint support attacker and a multiagent defender also tested on the disjoint support attacker for different values of K . We see that multiagent defender generalizes better to this unseen strategy than the single agent defender.

6. Training with Self Play

In the previous section, we showed that with a new theoretical insight into a more efficient attacker action space parameterization (Theorem 3), it is possible to train an attacker agent. The attacker agent was parametrized by a neural network different from the one implementing the defender, and it was trained in a multiagent fashion. In this section, we present additional theoretical insights that enables training by *self-play*: using a single neural network to parametrize both the attacker and defender.

The key insight is the following: both the defender’s optimal strategy and the construction of the optimal attacker in Theorem 3 depend on a primitive operation that takes a partition of the pieces into sets A, B and determines which of A or B is “larger” (in the sense that it has higher potential). For the defender, this leads directly to a strategy that destroys the set of higher potential. For the attacker, this primitive can be used in a binary search procedure to find the desired partition in Theorem 3: given an initial partition A, B into a prefix and a suffix of the pieces sorted by level, we determine which set has higher potential, and then recursively find a more balanced split point inside the larger of the two sets. This process is summarized in Algorithm 1.

Thus, by training a single neural network designed to implement this primitive operation — determining which of two sets has higher potential — we can simultaneously train both an attacker and a defender that invoke this neural network. We use DQN for this purpose because we found empirically that it is the quickest among our alternatives at

Algorithm 1 Self Play with Binary Search

```

initialize game
repeat
  Partition game pieces at center into  $A, B$ 
  repeat
    Input partition  $A, B$  into neural network
    Output of neural network determines next binary search split
    Create new partition  $A, B$  from this split
  until Binary Search Converges
  Input final partition  $A, B$  to network
  Destroy larger set according to network output
until Game Over: use reward to update network parameters with RL algorithm
    
```

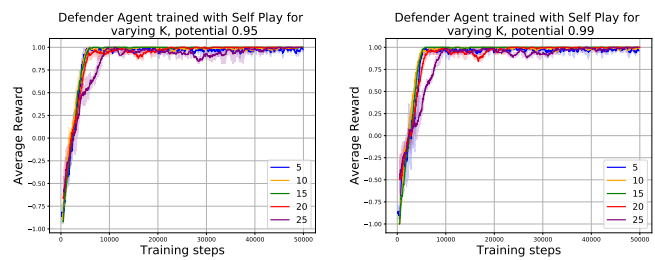


Figure 8. We train an attacker and defender via self play using a DQN. The defender is implemented as in Figures 4, 3, and the same neural network is used to train an attacker agent, performing binary search according to the Q values on partitions of the input space A, B . We then test the defender agent on the same procedural attacker used in Figures 4, 3, and find that self play shows markedly improved performance.

converging to consistent estimates of relative potentials on sets. We train both agents in this way, and test the defender agent on the same attacker used in Figures 2, 3 and 4. The results in Figure 8 show that a defender trained through self play significantly outperforms defenders trained against a procedural attacker.

7. Supervised Learning vs RL

Aside from testing the generalization of RL, the Attacker-Defender game also enables us to make a comparison with Supervised Learning. The closed-form optimal policy enables an evaluation of the ground truth on a *per move* basis. We can thus compare RL to a Supervised Learning setup, where we classify the correct action on a large set of sampled states. To carry out this test in practice, we first train a defender policy with reinforcement learning, saving all observations seen to a dataset. We then train a supervised network (with the same architecture as the defender policy) on this dataset to classify the optimal action. We then test the supervised network to determine how well it can play.

Can Deep Reinforcement Learning Solve Erdos-Selfridge-Spencer Games?



Figure 9. Plots comparing the performance of Supervised Learning and RL on the Attacker Defender Game for different choices of K . The left pane shows the proportion of moves correct for supervised learning and RL (according to the ground truth). Unsurprisingly, we see that supervised learning is better on average at getting the ground truth correct move. However, RL is better at playing the game: a policy trained through RL significantly outperforms a policy trained through supervised learning (right pane), with the difference growing for larger K .

We find an interesting dichotomy between the proportion of correct moves and the average reward. Unsurprisingly, supervised learning boasts a higher proportion of correct moves: if we keep count of the ground truth correct move for each turn in the game, RL has a lower proportion of correct moves compared to supervised learning (Figure 9 left pane). However, in the right pane of Figure 9, we see that RL is better at playing the game, achieving higher average reward for all difficulty settings, and significantly beating supervised learning as K grows.

This contrast forms an interesting counterpart to recent findings of (Silver et al., 2017), who in the context of Go also compared reinforcement learning to supervised approaches. A key distinction is that their supervised work was relative to a heuristic objective, whereas in our domain we are able to compare to provably optimal play. This both makes it possible to rigorously define the notion of a mistake, and also to perform more fine-grained analysis as we do in the remainder of this section.

Specifically, how is it that the RL agent is achieving higher reward in the game, if it is making more mistakes at a per-move level? To gain further insight into this, we categorize the per-move mistakes into different types, and study them separately. In particular, suppose the defender is presented with a partition of the pieces into two sets, where as before we assume without loss of generality that $\phi(A) \geq \phi(B)$. We say that the defender makes a *terminal mistake* if $\phi(A) \geq 0.5$ while $\phi(B) < 0.5$, but the defender chooses to destroy B . Note that this means the defender now faces a forced loss against optimal play, whereas it could have forced a win with optimal play had it destroyed A . We also define a subset of the family of terminal mistakes as follows: we say that the defender makes a *fatal mistake* if $\phi(A) + \phi(B) < 1$, but $\phi(A) \geq 0.5$ and the defender chooses to destroy B . Note that a fatal mistake is one that

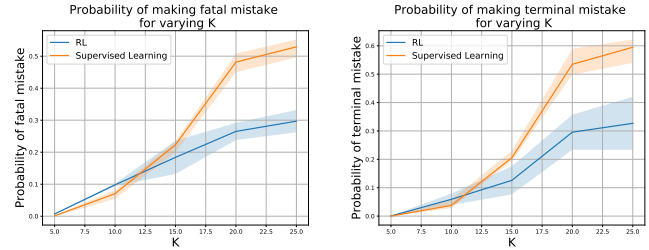


Figure 10. Figure showing the frequencies of different kinds of mistakes made by supervised learning and RL that would cost the game. The left pane shows the frequencies of fatal mistakes: where the agent goes from a winning state (potential < 1) to a losing state (potential ≥ 1). A superset of this kind of mistake, terminal mistakes, look at where the agent makes the wrong choice (irrespective of state potential), destroying (wlog) set A with $\phi(A) < 0.5$, instead of B , with $\phi(B) \geq 0.5$. In both cases we see that RL makes significantly fewer mistakes than supervised learning, particularly as difficulty increases.

converts a position where the defender had a forced win to one where it has a forced loss.

In Figure 10, we see that especially as K gets larger, reinforcement learning makes terminal and fatal mistakes at a much lower rate than supervised learning does. This suggests a basis for the different in performance: even if supervised learning is making fewer mistakes overall, it is making more mistakes in certain well-defined consequential situations.

8. Conclusion

In this paper, we have proposed Erdos-Selfridge-Spencer games as rich environments for investigating reinforcement learning, exhibiting continuously tunable difficulty and an exact combinatorial characterization of optimal behavior. We have demonstrated that algorithms can exhibit wide variation in performance as we tune the game’s difficulty, and we use the characterization of optimal behavior to evaluate generalization over raw performance. We provide theoretical insights that enable multiagent play and, through binary search, self play. Finally, we compare RL and Supervised Learning, highlighting interesting tradeoffs between per move optimality, average reward and fatal mistakes. We also develop further results in the Appendix, including an analysis of catastrophic forgetting, generalization across different values of the game’s parameters, and a method for investigating measures of the model’s confidence. We believe that this family of combinatorial games can be used as a rich environment for gaining further insights into deep reinforcement learning.

References

- Charles Beattie, Joel Z Leibo, Denis Teplyashin, Tom Ward, Marcus Wainwright, Heinrich Küttler, Andrew Lefrancq, Simon Green, Víctor Valdés, Amir Sadik, et al. Deepmind lab. *arXiv preprint arXiv:1612.03801*, 2016.
- Bruno Bouzy and Marc Métivier. Multi-agent learning experiments on repeated matrix games. In *ICML*, 2010.
- Michael Bowling, Neil Burch, Michael Johanson, and Oskari Tammelin. Heads-up limit hold'em poker is solved. *Commun. ACM*, 60:81–88, 2017.
- Greg Brockman, Vicki Cheung, Ludwig Pettersson, Jonas Schneider, John Schulman, Jie Tang, and Wojciech Zaremba. Openai gym, 2016.
- Yan Duan, Xi Chen, Rein Houthooft, John Schulman, and Pieter Abbeel. Benchmarking deep reinforcement learning for continuous control. In *International Conference on Machine Learning*, pp. 1329–1338, 2016.
- Paul Erdos and John Selfridge. On a combinatorial game. *Journal of Combinatorial Theory*, 14:298–301, 1973.
- Peter Henderson, Riashat Islam, Philip Bachman, Joelle Pineau, Doina Precup, and David Meger. Deep reinforcement learning that matters. In *AAAI 2018*, 2017.
- Christopher Hesse, Matthias Plappert, Alec Radford, John Schulman, Szymon Sidor, and Yuhuai Wu. Openai baselines. <https://github.com/openai/baselines>, 2017.
- Michael L. Littman. Markov games as a framework for multi-agent reinforcement learning. In *Proceedings of the Eleventh International Conference on International Conference on Machine Learning*, pp. 157–163, 1994.
- Horia Mania, Aurelia Guy, and Benjamin Recht. Simple random search provides a competitive approach to reinforcement learning. [abs/1803.07055](https://arxiv.org/abs/1803.07055), 2018. URL <http://arxiv.org/abs/1803.07055>.
- Volodymyr Mnih, Koray Kavukcuoglu, David Silver, Andrei A. Rusu, Joel Veness, Marc G. Bellemare, Alex Graves, Martin Riedmiller, Andreas K. Fidjeland, Georg Ostrovski, Stig Petersen, Charles Beattie, Amir Sadik, Ioannis Antonoglou, Helen King, Dharshan Kumaran, Daan Wierstra, Shane Legg, and Demis Hassabis. Human-level control through deep reinforcement learning. *Nature*, 518(7540):529–533, Feb 2015. ISSN 0028-0836. URL <http://dx.doi.org/10.1038/nature14236>.
- Volodymyr Mnih, Adria Puigdomenech Badia, Mehdi Mirza, Alex Graves, Timothy P. Lillicrap, Tim Harley, David Silver, and Koray Kavukcuoglu. Asynchronous methods for deep reinforcement learning. *arXiv preprint arxiv:1602.01783*, 2016.
- Aravind Rajeswaran, Sarvjeet Ghotra, Sergey Levine, and Balaraman Ravindran. Epopt: Learning robust neural network policies using model ensembles. *arXiv preprint arXiv:1610.01283*, 2016.
- John Schulman, Filip Wolski, Prafulla Dhariwal, Alec Radford, and Oleg Klimov. Proximal policy optimization algorithms. *arXiv preprint arxiv:1707.06347*, 2017.
- David Silver, Julian Schrittwieser, Karen Simonyan, Ioannis Antonoglou, Aja Huang, Arthur Guez, Thomas Hubert, Lucas Baker, Matthew Lai, Adrian Bolton, Yutian Chen, Timothy Lillicrap, Fan Hui, Laurent Sifre, George van den Driessche, Thore Graepel, and Demis Hassabis. Mastering the game of go without human knowledge. *Nature*, 550(7676):354–359, Oct 2017. ISSN 0028-0836. URL <http://dx.doi.org/10.1038/nature24270>.
- Joel Spencer. Randomization, derandomization and antirandomization: Three games. *Theoretical Computer Science.*, 131:415–429, 09 1994.
- Andrew Stephenson. Lxxi. on induced stability. *The London, Edinburgh, and Dublin Philosophical Magazine and Journal of Science*, 17(101):765–766, 1909.
- Josh Tobin, Rachel Fong, Alex Ray, Jonas Schneider, Wojciech Zaremba, and Pieter Abbeel. Domain randomization for transferring deep neural networks from simulation to the real world. *arXiv preprint arXiv:1703.06907*, 2017.
- Emanuel Todorov, Tom Erez, and Yuval Tassa. Mujoco: A physics engine for model-based control. In *Intelligent Robots and Systems (IROS), 2012 IEEE/RSJ International Conference on*, pp. 5026–5033. IEEE, 2012.
- Martin A. Zinkevich, Michael Bowling, and Michael Wunder. The lemonade stand game competition: Solving unsolvable games. *SIGecom Exch.*, 10:35–38, 2011.