

---

# Variable selection for Gaussian processes via sensitivity analysis of the posterior predictive distribution

---

**Topi Paananen**      **Juho Piironen**      **Michael Riis Andersen**      **Aki Vehtari**  
topi.paananen@aalto.fi    juho.piironen@aalto.fi    michael.riis@gmail.com    aki.vehtari@aalto.fi

Helsinki Institute for Information Technology, HIIT  
Aalto University, Department of Computer Science

## Abstract

Variable selection for Gaussian process models is often done using automatic relevance determination, which uses the inverse length-scale parameter of each input variable as a proxy for variable relevance. This implicitly determined relevance has several drawbacks that prevent the selection of optimal input variables in terms of predictive performance. To improve on this, we propose two novel variable selection methods for Gaussian process models that utilize the predictions of a full model in the vicinity of the training points and thereby rank the variables based on their predictive relevance. Our empirical results on synthetic and real world data sets demonstrate improved variable selection compared to automatic relevance determination in terms of variability and predictive performance.

## 1 INTRODUCTION

Often the goal of supervised learning is not only to learn the relationship between the predictors and target variables, but to also assess the predictive relevance of the input variables. A relevant input variable is one with a high predictive power on the target variable (Vehtari et al., 2012). In many applications, simplifying a model by selecting only the most relevant input variables is important for two reasons. Firstly, it makes the model more interpretable and understandable by domain experts. Secondly, it may reduce future costs if there is a price associated with measuring or predicting with many variables. Here, we focus on methods

that select a subset of the original variables, as opposed to constructing new features, as this preserves the interpretability of the variables.

Gaussian processes (GPs) are flexible, nonparametric models for regression and classification in the Bayesian framework (Rasmussen and Williams, 2006). The relevance of input variables of a fitted GP model is often inferred implicitly from the length-scale parameters of the GP covariance function. This is called automatic relevance determination (ARD), a term that originated in the neural network literature (MacKay, 1994; Neal, 1995), and since then has been used extensively for both Gaussian processes (Williams and Rasmussen, 1996; Seeger, 2000) and other models (Tipping, 2000; Wipf and Nagarajan, 2008).

Alternative to ARD, variable selection via sparsifying spike-and-slab priors is possible also with Gaussian processes (Linkletter et al., 2006; Savitsky et al., 2011). The drawback of these methods is that they require using a Markov chain Monte Carlo method for inference, which is computationally expensive with Gaussian processes. Due to space constraints, we will not consider sparsifying priors in this study. The predictive projection method originally devised for generalized linear models (Goutis and Robert, 1998; Dupuis and Robert, 2003) has also been implemented for Gaussian processes (Piironen and Vehtari, 2016). This method can potentially select variables with good predictive performance, but has a substantial computational cost due to the required exploration of the model space.

Due to the close connection between Gaussian processes and kernel methods, it is sometimes possible to utilize variable selection approaches used for kernel methods also with Gaussian processes. For example, Crawford et al. (2019, 2018) derive an analog for the effect size of each input variable for nonparametric methods, and show that it generalizes also to Gaussian process models. They then assess the importance of variable  $j$  using Kullback-Leibler divergence between

the marginal distribution of the rest of the variables to their conditional distribution when variable  $j$  is set to zero.

The main contributions of this paper are summarized as follows. We present two novel input variable selection methods for Gaussian process models, which directly assess the predictive relevance of the variables via sensitivity analysis. Both methods utilize the posterior of the full model (i.e. one that includes all the input variables) near the training points to estimate the predictive relevance of the variables. We also demonstrate why certain properties of automatic relevance determination make it unsuitable for variable selection and show that the proposed methods are not affected by these weaknesses. Our empirical evaluations indicate that the proposed methods lead to improved variable selection performance in terms of predictive performance, and generate the relevance ranking more consistently between different training data sets. We also demonstrate how the pointwise estimates of the methods can be useful for assessing local predictive relevance beyond the global, average relevance of each variable. The methods serve as practical alternatives to automatic relevance determination without increasing the computational cost as much as many alternative variable selection methods in the literature.

## 2 BACKGROUND

This section shortly reviews Gaussian processes and automatic relevance determination in this context, as well as discusses the problems associated with variable selection via ARD.

### 2.1 Gaussian Process Models

Gaussian processes (GPs) are nonparametric models that define a prior distribution directly in the space of latent functions  $f(\mathbf{x})$ , where  $\mathbf{x}$  is a  $p$ -dimensional input vector. The form and smoothness of the functions generated by a GP are determined by its covariance function  $k(\mathbf{x}, \mathbf{x}')$ , which defines the covariance between the latent function values at the input points  $\mathbf{x}$  and  $\mathbf{x}'$ . The prior is typically assumed to have zero mean:

$$p(f(\mathbf{X})) = p(\mathbf{f}) = \mathcal{N}(\mathbf{f} | 0, \mathbf{K}),$$

where  $\mathbf{K}$  is the covariance matrix between the latent function values at the training inputs  $\mathbf{X} = (\mathbf{x}^{(1)}, \dots, \mathbf{x}^{(n)})$  such that  $\mathbf{K}_{ij} = k(\mathbf{x}^{(i)}, \mathbf{x}^{(j)})$ .

In regression problems with Gaussian observation models, the GP posterior distribution is analytically tractable for both the latent values and noisy observations by conditioning the joint normal distribution of training and test outputs on the observed data.

While other observation models do not have analytically tractable solutions, numerous approximations have been developed for inference with different likelihoods in both regression and classification (Williams and Barber, 1998; Minka, 2001; Vanhatalo et al., 2009).

### 2.2 Automatic Relevance Determination

A widely used covariance function in Gaussian process inference is the squared exponential (SE) with separate length-scale parameters  $l_i$  for each of the  $p$  input dimensions

$$k_{\text{SE}}(\mathbf{x}, \mathbf{x}') = \sigma_f^2 \exp\left(-\frac{1}{2} \sum_{i=1}^p \frac{(x_i - x'_i)^2}{l_i^2}\right). \quad (1)$$

While the common hyperparameter  $\sigma_f$  determines the overall variability, the separate length-scale parameters  $l_i$  allow the functions to vary at different scales along different variables.

In some contexts, automatic relevance determination (ARD) simply means using the covariance function (1) instead of one with a single length-scale parameter  $l$ . Often, however, the term is used for a more specific meaning, namely for inferring the predictive relevance of each variable from the inverse of its length-scale parameter. This intuition is based on the fact that an infinitely large length-scale means no correlation between the latent function values in that dimension. However, in practice they will never be infinite, and inferring irrelevance from a large length-scale is problematic for two reasons. First, the length-scale parameters alone are not well identified, but only the ratios of  $l_i$  and  $\sigma_f$  (Zhang, 2004), which increases variance of the relevance measure. Second, ARD systematically overestimates the predictive relevance of nonlinear variables relative to linear variables of equal relevance in the squared error sense (Piironen and Vehtari, 2016).

## 3 PREDICTING FEATURE RELEVANCES VIA SENSITIVITY ANALYSIS

This section describes the two proposed variable selection methods that analyze the sensitivity of the posterior GP at the training data locations. We will first present the outline of both methods and their properties, and then discuss their computational complexity.

### 3.1 Kullback-Leibler Divergence as a Measure of Predictive Relevance

The Kullback-Leibler divergence (KLD) is a widely used measure of dissimilarity between two probability

distributions (Kullback and Leibler, 1951). In this section, we present a method for assessing the predictive relevance of input variables via sensitivity analysis of the posterior predictive distribution. When moving an input with respect to a single variable, a large difference in KLD between predictive distributions indicates that the variable has a high predictive relevance. In our method, the predictive distributions are compared at the training points and points that are moved with respect to one variable. The KLD is a favourable measure for predictive relevance, because it takes into account changes in both the predictive mean and uncertainty. As the KLD is applicable to arbitrary distributions with compatible support, this procedure is not limited to any specific likelihood or model.

By relating to the total-variation distance of Pinsker’s inequality, it is reasonable to utilize the Kullback-Leibler divergence from density  $p$  to  $q$ ,  $\mathcal{D}_{\text{KL}}(p||q)$ , as a measure of distance in the form (Simpson et al., 2017)

$$d(p||q) = \sqrt{2 \mathcal{D}_{\text{KL}}(p||q)}.$$

Using the square root also allows linear approximation of infinitesimal changes in the predictive distribution via perturbations in the input variables. Applying this to the posterior predictive distribution at a training point  $i$ ,  $p(y_*|\mathbf{x}^{(i)}, \mathbf{y})$ , and a point that is perturbed by amount  $\Delta$  with respect to variable  $j$ ,  $p(y_*|\mathbf{x}^{(i)} + \Delta_j, \mathbf{y})$ , we use the following measure of predictive relevance

$$r(i, j, \Delta) = \frac{d(p(y_*|\mathbf{x}^{(i)}, \mathbf{y}) || p(y_*|\mathbf{x}^{(i)} + \Delta_j, \mathbf{y}))}{\Delta}, \quad (2)$$

where  $\Delta_j$  is a vector of zeroes with  $\Delta$  on the  $j$ ’th entry. Averaging this measure over all of the training points  $i$  yields a relevance estimate for the  $j$ ’th variable

$$\text{KL}_j = \frac{1}{n} \sum_{i=1}^n r(i, j, \Delta).$$

Using this estimate, we can rank the input variables by relevance and a desired number of them can be selected. Henceforth, we will refer to the presented method as the KL method.

For Gaussian observation models, the relevance measure defined in equation (2) is related to the partial derivative of the mean of the latent function with respect to the variable  $j$ . In this case, if the latent variance is constant, taking the limit  $\Delta \rightarrow 0$  simplifies the measure in equation (2) to the form

$$\lim_{\Delta \rightarrow 0} r(i, j, \Delta) = (\text{Var}[y_*|\mathbf{x}^{(i)}, \mathbf{y}])^{-1/2} \frac{\partial}{\partial x_j} \mathbb{E}[y_*|\mathbf{x}^{(i)}, \mathbf{y}],$$

where  $\mathbb{E}[y_*|\mathbf{x}^{(i)}, \mathbf{y}]$  and  $\text{Var}[y_*|\mathbf{x}^{(i)}, \mathbf{y}]$  are the mean and variance of the posterior predictive distribution

$p(y_*|\mathbf{x}^{(i)}, \mathbf{y})$ , respectively. Hence, in the special case of a Gaussian likelihood, the proposed measure can be interpreted as a partial derivative weighted by the predictive uncertainty. The method thus has a connection to methods that rank variables via partial derivatives, see e.g. (Härdle and Stoker, 1989; Ruck et al., 1990; Lal et al., 2006; Liu et al., 2018).

The choice of the perturbation distance  $\Delta$  has to be reasonable with respect to the given data set. According to our empirical evaluations, the proposed method is insensitive to the size of the perturbation. The results of this paper are computed with  $\Delta = 10^{-4}$  when the inputs were normalized to zero mean and unit standard deviation, and no noticeable differences were observed when  $\Delta$  was varied for two orders of magnitude above and below this value. However, very small values should be avoided because of potential numerical instability. For more details, see Figure 7 in the supplementary material.

### 3.2 Variance of the Posterior Latent Mean

In this section, we present a method for ranking input variables based on the variability of the GP latent mean in the direction of each variable. When the value of a single input variable is changed, large variability in the latent mean indicates that the variable is relevant for predicting the target variable. In contrast to the KL method, this method thus considers only the latent mean, but examines it throughout the conditional distribution of each variable at the training point and not just the immediate vicinity of the point. We thus ignore the uncertainty of the predictions but utilize information from a larger area of the input space. Another benefit of this is that computing the predictive mean of a Gaussian process is computationally cheaper than predicting the marginal variance.

In order to estimate the variance of the mean of the latent function, we will approximate the distribution of the input variables. Under the assumption that the input data has finite first and second moments, we can do this by computing the sample mean  $\boldsymbol{\mu}$  and sample covariance  $\boldsymbol{\Sigma}$  from the  $n$  training inputs  $\mathbf{X} = (\mathbf{x}^{(1)}, \dots, \mathbf{x}^{(n)})$ . At any given point, the conditional distribution of variable  $j$  at training point  $i$ ,  $p(x_j | \mathbf{x}_{-j}^{(i)})$ , can then be estimated using the conditioning rule of the multivariate Gaussian:

$$\begin{aligned} x_j | \mathbf{x}_{-j} &\sim \mathcal{N}(m_j, s_j^2), \\ m_j &= \mu_j + \boldsymbol{\sigma}_{j,-j} \boldsymbol{\Sigma}_{-j,-j}^{-1} (\mathbf{x}_{-j} - \boldsymbol{\mu}_{-j}), \\ s_j^2 &= \sigma_{j,j} - \boldsymbol{\sigma}_{j,-j} \boldsymbol{\Sigma}_{-j,-j}^{-1} \boldsymbol{\sigma}_{-j,j}. \end{aligned} \quad (3)$$

Here, the subscript  $j$  refers to selecting the row or column  $j$  from  $\boldsymbol{\mu}$  or  $\boldsymbol{\Sigma}$ , whereas the subscript  $-j$  refers to excluding them.

The variance of the posterior mean  $\bar{f}_j^{(i)} = \mathbb{E}[f(x_j) | \mathbf{x}_{-j}^{(i)}]$  along the  $j$ 'th dimension is then given by integrating over the conditional distribution  $p(x_j | \mathbf{x}_{-j}^{(i)})$

$$\text{Var}[\bar{f}_j^{(i)}] = \int (\bar{f}_j^{(i)}(x_j))^2 \mathcal{N}(x_j | m_j, s_j^2) dx_j - \left( \int \bar{f}_j^{(i)}(x_j) \mathcal{N}(x_j | m_j, s_j^2) dx_j \right)^2.$$

With a change of variables  $k = (x_j - m_j)/(\sqrt{2}s_j)$ , the variance takes a simpler form that can be numerically approximated with the Gauss-Hermite quadrature.

$$\begin{aligned} \text{Var}[\bar{f}_j^{(i)}] &= \int (\bar{f}_j^{(i)}(\sqrt{2}s_j k + m_j))^2 \frac{e^{-k^2}}{\sqrt{\pi}} dk \\ &\quad - \left( \int \bar{f}_j^{(i)}(\sqrt{2}s_j k + m_j) \frac{e^{-k^2}}{\sqrt{\pi}} dk \right)^2 \\ &\approx \pi^{-1/2} \sum_{n_k=1}^{N_k} w_i (\bar{f}_j^{(i)}(\sqrt{2}s_j k_i + m_j))^2 \\ &\quad - \pi^{-1} \left( \sum_{n_k=1}^{N_k} w_i \bar{f}_j^{(i)}(\sqrt{2}s_j k_i + m_j) \right)^2, \end{aligned}$$

where  $N_k$  is the number of weights  $w_i$  and evaluation points  $k_i$  of the Gauss-Hermite quadrature approximation. The  $k_i$  are given by the roots of the physicists' version of the Hermite polynomial  $H_{N_k}(k)$  and the weights are

$$w_i = \frac{2^{N_k-1} N_k! \sqrt{\pi}}{N_k^2 [H_{N_k-1}(k_i)]^2}. \quad (4)$$

The above procedure is repeated with all of the conditional distributions  $p(x_j | \mathbf{x}_{-j}^{(i)})$  from the  $n$  training points and the average is computed

$$\text{VAR}_j = \frac{1}{n} \sum_{i=1}^n \text{Var}[\bar{f}_j^{(i)}]. \quad (5)$$

The average is then used as an estimate of the predictive relevance of variable  $j$ . Henceforth, we will refer to this method as the VAR method.

In this paper, we will only consider data sets where the number of data points  $n$  is greater than the number of input dimensions  $p$ . In the absence of linearly dependent components in the inputs, the resulting sample covariance matrix  $\Sigma$  will be positive definite and its inverse can be computed using the Cholesky decomposition. In order to increase the numerical stability of the decomposition, a small diagonal term is added to ill-conditioned sample covariance matrices. By using more shrinkage when estimating the covariance matrix, the VAR method could be used also with data sets where  $n < p$ .

Relating to the KL method, the advantage of the VAR method is that modelling the distribution of the inputs allows us to examine the GP posterior for out-of-sample behavior in a larger area of the input space than just at the training data locations. On the other hand, estimating the input distribution is a task itself, which may increase the variance of the resulting relevance estimate when data are scarce.

### 3.3 Computational Complexity

Exact inference with Gaussian processes has complexity  $\mathcal{O}(n^3)$  for a data set with  $n$  observations, which hinders their applicability especially in large data sets. Once a full GP model is fitted, ranking variables using ARD requires no additional computations. By a projection approach (Piironen and Vehtari, 2016), the variables can possibly be ranked more accurately, but the drawback is that the model space exploration to find the submodels increases the complexity to  $\mathcal{O}(p^2 n^3)$ , where  $p$  is the number of input variables.

The complexity of Gaussian process inference arises from the unavoidable matrix inversion. However, the same inverse can be used for making an arbitrary number of predictions at new test points, and the cost of predicting the GP mean and variance at a single test point are  $\mathcal{O}(n)$  and  $\mathcal{O}(n^2)$ , respectively. Both of the proposed methods in this paper utilize a constant number of predictions for each of the  $n$  data points and  $p$  input variables. As the VAR method does not require the predictive variance, its computational complexity is  $\mathcal{O}(p \cdot n \cdot n) = \mathcal{O}(pn^2)$ , whereas the KL method has complexity  $\mathcal{O}(pn^3)$ . For both methods, using a sparse GP approximation with  $m < n$  inducing points can reduce the cost of predictions and reduce the complexity of the proposed methods to  $\mathcal{O}(pnm)$  and  $\mathcal{O}(pnm^2)$ , respectively for the VAR and KL methods (Bui et al., 2017). Alternatively, one may reduce computational cost by using only a subset of training points to estimate the predictive relevances of variables.

In addition to the complexity due to predictions, the VAR method requires inverting the submatrix  $\Sigma_{-j,-j}$  of the sample covariance matrix of the inputs, for each of the  $p$  variables. Taking advantage of the positive definiteness of the full covariance matrix, the Cholesky decomposition of it,  $\mathcal{O}(p^3)$  in complexity, needs to be computed only once per training set. Then the Cholesky decomposition for each submatrix  $\Sigma_{-j,-j}$  is obtained with a rank one update from the full covariance matrix, resulting in  $p$  rank one updates of complexity  $\mathcal{O}(p^2)$ . Thus, the full complexity of the variance method is  $\mathcal{O}(pn^2 + p^3)$ . Because we are considering only the case  $p < n$ , the effective complexity is still  $\mathcal{O}(pn^2)$ . The details of the rank one update are described in the supplementary material.

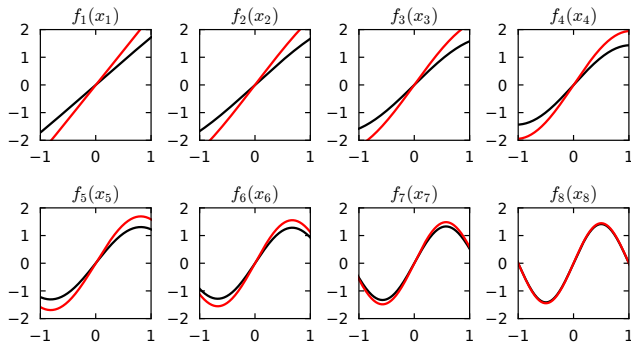


Figure 1: Latent functions  $f_j(x_j), j = 1, \dots, 8$  of the two toy examples. Black represents the latent functions with uniform inputs and red represents normally distributed inputs, each function scaled to unit variance according to its corresponding input distribution.

## 4 EXPERIMENTS

This section will present two toy examples that illustrate how the proposed methods are able to assess the predictive relevance between linear and nonlinear variables more accurately compared to automatic relevance determination. The section will also present variable selection results in regression and classification tasks on real data sets. In all experiments, the model of choice is a GP model with the ARD covariance function in equation (1). We want to emphasize, that our intent is not to criticize the use of this kernel in general, but to show that it is problematic to use it for assessing the relevance of input variables.

### 4.1 Toy Examples

In the first experiment we consider a toy example, where the target variable is constructed as a sum of eight independent and additive variables whose responses have varying degrees of nonlinearity. We generate the target variable  $y$  based on the inputs as follows:

$$\begin{aligned} y &= f_1(x_1) + \dots + f_8(x_8) + \varepsilon, \\ \varepsilon &\sim \mathcal{N}(0, 0.3^2), \\ f_j(x_j) &= A_j \sin(\phi_j x_j), \end{aligned} \quad (6)$$

where the angular frequencies  $\phi_j$  are equally spaced between  $\pi/10$  and  $\pi$ , and the scaling factors  $A_j$  are such that the variance of each  $f_j(x_j)$  is one. We consider two separate mechanisms for generating the input data so that either  $x_j \sim \mathcal{U}(-1, 1)$  or  $x_j \sim \mathcal{N}(0, 0.4^2)$ . The functions  $f_j$  are presented in Figure 1 for uniformly distributed inputs (black) and normally distributed inputs (red).

For both toy examples, we sampled 300 training points and constructed a Gaussian process model with a co-

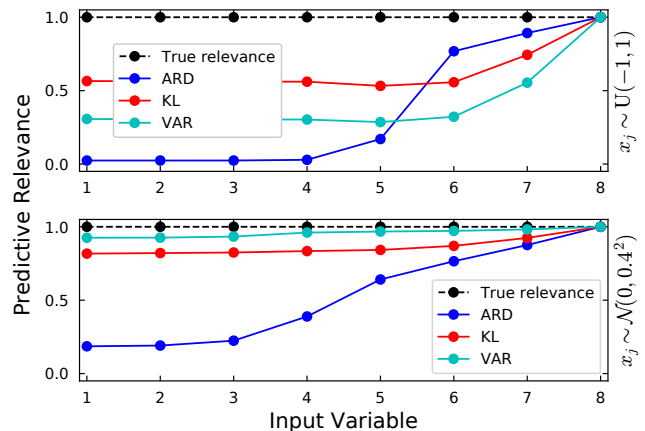


Figure 2: Relevance estimates for eight variables in the two toy examples in equation (6) with uniformly distributed inputs (top) and normally distributed inputs (bottom). The estimates are computed with ARD (blue), the KL method (red), and the VAR method (cyan). The results are averaged over 200 data realizations and scaled so that the most relevant variable has a relevance of one. Error bars representing 95% confidence intervals are indistinguishable.

variance function being the squared exponential in equation (1) with an added constant term. Using the full model with hyperparameters optimized to the maximum of marginal likelihood, we calculated the relevance of each variable either directly via ARD using the inverse length-scale, or by averaging the KL and VAR relevance estimates from each training point. The averaged results of 200 random data sets are presented in Figure 2 for the two examples with inputs distributed uniformly (top) and normally (bottom). Input 1 is the most linear one and input 8 is the most nonlinear.

Figure 2 demonstrates that in the toy example with uniform inputs, all three methods prefer nonlinear inputs over linear inputs. However, the preference in our methods is not as severe as with ARD, which assigns relevance values close to zero for half of the variables. The bottom figure, representing the toy example with Gaussian distributed inputs, shows that our methods produce almost equal relevance values for all eight variables. Overall, our methods are notably better than ARD in identifying the true relevances of the variables despite the varying degrees of nonlinearity. To ensure that the above results hold even if there are irrelevant variables in the data, we repeated the experiment with the addition of totally irrelevant input variables. The results are comparable, and are shown in Figure 10 in the supplementary material.

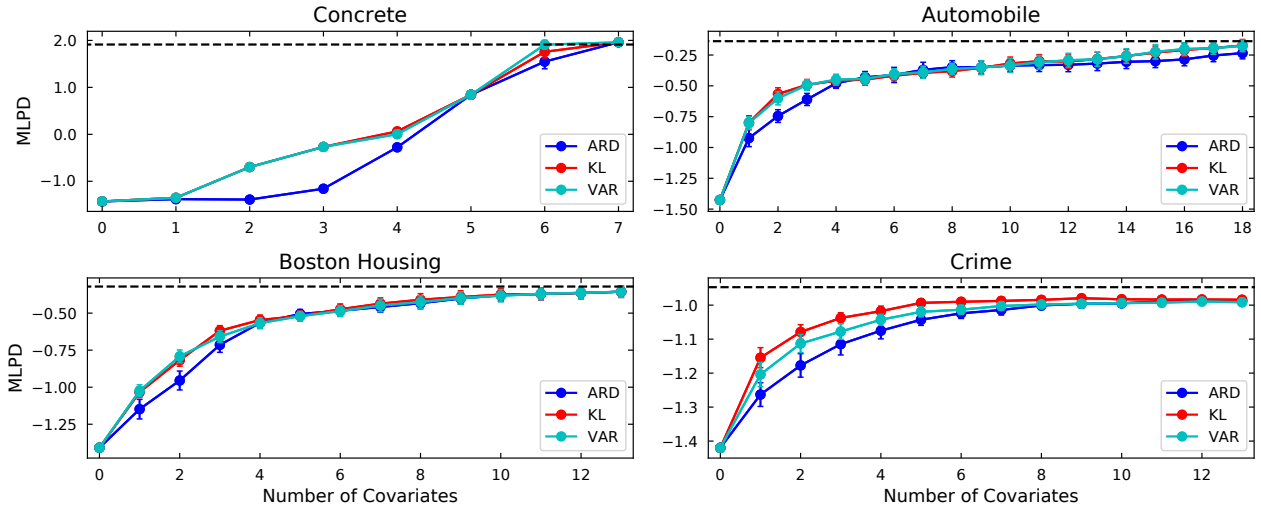


Figure 3: Mean log predictive densities (MLPDs) of the test sets with 95% confidence intervals for submodels as a function of variables included in the submodel. Blue depicts variables sorted using ARD, red and cyan depict the KL and VAR methods, respectively. The dashed horizontal line depicts the MLPD of the full model with hyperparameters sampled using the Hamiltonian Monte Carlo algorithm.

## 4.2 Real World Data

In the second experiment, we compared the variable selection performance of the three methods on five benchmark data sets obtained from the UCI machine learning repository<sup>1</sup>. The data sets are summarized in Table 1. The Pima indians data set is a binary classification problem, and the others are regression tasks. For each method, we used a Gaussian process model with a Gaussian likelihood and a sum of constant and squared exponential kernels as a covariance function. The model was first fitted with all  $p$  variables included, and then submodels with 1 to  $p - 1$  of the most relevant variables included were fitted again. The submodel variables were picked based on the relevance ranking given by each method. We performed 50 repetitions, each time splitting the data into random training and test sets with the number of training points shown in Table 1. Both the full model and submodels were trained on the training set, and the predictive performance of the submodels was evaluated by computing the mean log predictive densities (MLPDs) using the independent test set.

For the regression tasks, the mean log predictive densities of the submodels on the test sets are presented in Figure 3 as a function of the number of variables included in the submodel. A plot for each data set contains results when the variables are sorted using ARD (blue), the KL method (red), and the VAR method (cyan). Thus, the only difference between the three

Table 1: Summary of real world dataset parameters: number of variables  $p$ , data points  $n_{\text{tot}}$ , and training points used  $n$ .

Dataset	$p$	$n_{\text{tot}}$	$n$
Concrete	7	103	80
Boston Housing	13	506	300
Automobile	38	193	150
Crime	102	1992	400
Pima Indians	8	392	300

curves is the choice of variables included in the submodels. The GP models are fitted by maximizing the hyperparameter posterior distribution, with a half- $t$  distribution as the prior for the noise and signal magnitudes, and inverse-gamma distribution for the length-scales. The inverse-gamma was chosen because it has a sharp left tail that penalizes very small length-scales, but its long right tail allows the length-scales to become large (Stan Development Team, 2017). The plots for the Automobile and Crime data sets are shown only up to a point where the predictive performance saturates. The horizontal line represents the MLPD of the full model on the test sets, which was computed using 100 Hamiltonian Monte Carlo (HMC) samples from the hyperparameter posterior (Duane et al., 1987).

The results show that in all four data sets, both of the proposed methods generate a better ranking for the variables than ARD does, resulting in submodels with

<sup>1</sup><https://archive.ics.uci.edu/ml/index.html>

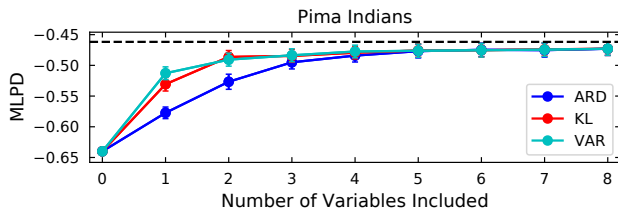


Figure 4: Mean log predictive densities (MLPDs) of the test sets of the Pima Indians data set with 95% confidence intervals for submodels as a function of the number of variables included in the submodel. The dashed horizontal line depicts the MLPD of the full model with hyperparameters sampled using the Hamiltonian Monte Carlo algorithm.

better predictive performance. The improvement is most distinct in the first three or four variables in all the data sets. This is because ARD, by definition, picks the most nonlinear variables first, but our methods are able to identify variables that are more relevant for prediction, albeit more linear. After the initial improvement, the ranking in the latter variables is never worse than for ARD.

For the binary classification problem, we used a probit likelihood and the expectation propagation (EP) (Minka, 2001) method to approximate the posterior distribution. The mean log predictive densities on independent test sets as a function of the number of variables included in the submodel are presented in Figure 4. The improvement in variable ranking is very similar to the regression tasks, with largest improvements in submodels with one to three variables. Both of the proposed methods are thus able to identify variables with good predictive performance in regression as well as classification tasks.

### 4.3 Ranking Variability

The weak identifiability of the length-scale parameters increases the variation of the ARD relevance estimate. To quantify this, we studied the variability of each method in determining the relevance ranking of variables between the 50 random training splits of the four regression data sets. For each consecutive choice of which variable to add to the submodel, we computed the entropy, which depicts the variability of the variable choice between different training sets. If the same variable is chosen in each training set, the resulting entropy is zero, and more variability leads to higher entropy. Because the maximum possible entropy depends on the number of variables to choose from, we divided the entropy values by the maximum possible entropy of each data set. The maximum entropy corresponds

to the case where any of the  $p$  variables is chosen with equal probability. The variability results are presented in Figure 5.

Figure 5 indicates that the ranking variability is correlated with predictive performance of the submodels, shown in Figure 3. In the Housing, Automobile, and Crime data sets, ARD has the largest variability in the first variable choice. This seems to propagate into improved predictive performance in small submodels with one to three variables. On the other hand, in the Concrete data set, ARD has more variability in the latter variable choices. For example, the better performance of the submodel with six variables is purely the result of choosing between two variables more consistently, because all three methods always pick the same two variables last, but ARD is more uncertain about their order of relevance. A more detailed analysis of the ranking variability is presented in the supplement.

### 4.4 Pointwise Relevance Estimates

In some cases, a variable might have strong predictive relevance in some region, while being quite irrelevant on average. In some applications, the identification of such locally relevant variables is important. Consider a hypothetical regression problem, where the variables represent measurements to be made on a patient, and the dependent variable represents the progression of a disease. The information that some measurement has little relevance on average, but for some patients it is a clear indication of how far the disease has progressed, may provide essential information for medical professionals. In the context of neural networks, Refenes and Zapranis (1999) discuss using the maximum of pointwise relevance values as a useful indicator in financial applications.

Both of the proposed variable selection methods can be used to assess the relevance of variables in a specific area of the input space. To demonstrate this, we computed the pointwise KL relevance values of the variables 1 and 8 from a sample of 300 training points from the toy example in equation (6), and the results are presented in Figure 6. As mentioned in Section 3.1, in Gaussian process regression with a Gaussian likelihood, the KL relevance value is analogous to the partial derivative of the mean of the latent function divided by the standard deviation of the posterior predictive distribution. This can be clearly seen by comparing Figure 6 to the true latent functions  $f_1(x_1)$  and  $f_8(x_8)$  in Figure 2.

The pointwise predictive relevance values presented in Figure 6 illustrate one of the novel aspects of the proposed methods. While automatic relevance determination outputs only a single number that implicitly represents the relevance of a variable, the KL and VAR



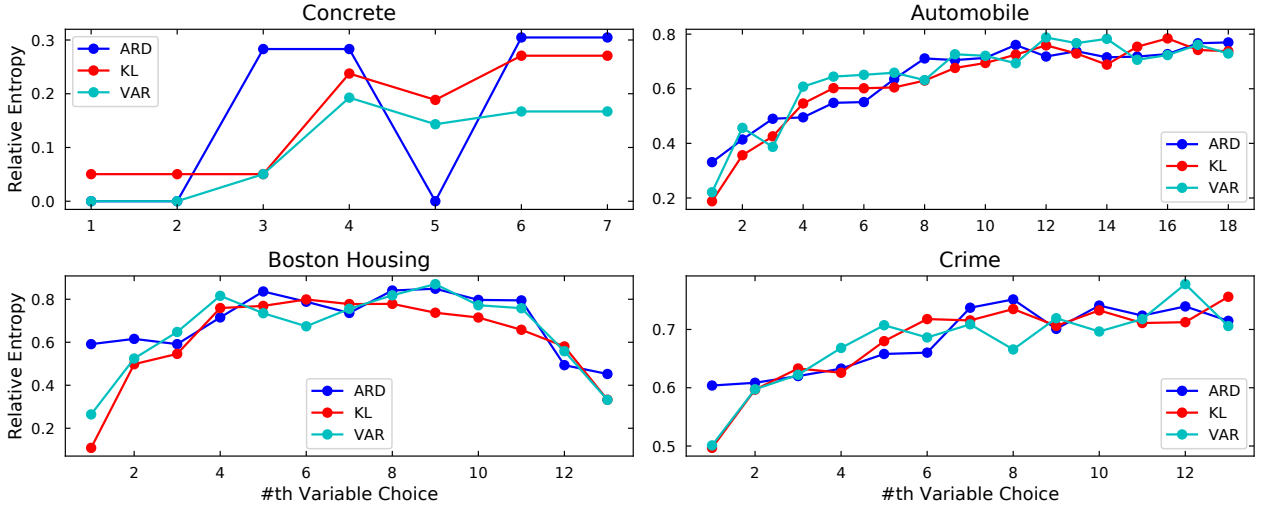


Figure 5: Relative entropies that depict the variability between different training data sets for each consecutive choice of variables to add to the submodel. Blue depicts variables sorted using ARD, red and cyan depict the KL and VAR methods, respectively.

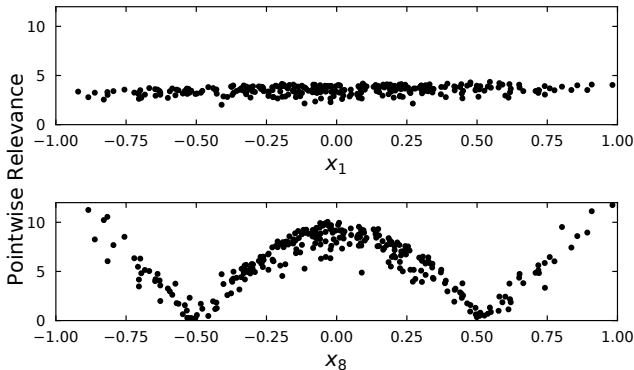


Figure 6: Plot of the pointwise KL relevance values for variables 1 and 8 computed from a sample of 300 points from the toy example in equation (6), where  $x_1, x_8 \sim \mathcal{N}(0, 0.4^2)$ .

methods can compute the relevance estimate of input variables at arbitrary points of the input space. As shown in the experiments of Section 4.2, averaging the pointwise values at the training points is effective in assessing the global predictive relevance, and the ability to consider predictive relevance locally improves the applicability of the methods.

## 5 CONCLUSIONS

This paper has proposed two new methods for ranking variables in Gaussian process models based on their predictive relevances. Our experiments on simulated and real world data sets indicate that the methods produce

an improved variable relevance ranking compared to the commonly used automatic relevance determination via length-scale parameters. Regarding the predictive performance, although the methods were better than ARD, even better results could be obtained by other means, such as the predictive projection method, but at the expense of a much higher computational cost. Additionally, our methods were shown to generate the relevance ranking for variables with less variation compared to ARD, which is an important result in terms of interpretability of the chosen submodels. We also showed how one of the methods is connected to relevance estimation via derivatives, which encourages further research in this direction.

The methods proposed here require computing relevance values for each variable in each point of the training data, thus increasing the computational cost compared to automatic relevance determination. However, this cost is by no means prohibitive compared to the Gaussian process inference, which is computationally expensive in itself. Additionally, the methods are simpler and computationally cheaper than most alternative methods proposed in the literature. We thus discourage interpreting the length-scale of a particular dimension as a measure of predictive relevance, and advise using a more appropriate method for variable selection and relevance assessment.

Python implementations for the methods discussed in the paper are freely available at <https://www.github.com/topipa/gp-varsel-kl-var>.



References

- Bui, T. D., Yan, J., and Turner, R. E. (2017). A unifying framework for gaussian process pseudo-point approximations using power expectation propagation. *The Journal of Machine Learning Research*, 18(1):3649–3720.
- Crawford, L., Flaxman, S., Runcie, D., and West, M. (2019). Variable prioritization in nonlinear black box methods: a genetic association case study. Submitted to the Annals of Applied Statistics.
- Crawford, L., Wood, K. C., Zhou, X., and Mukherjee, S. (2018). Bayesian approximate kernel regression with variable selection. *Journal of the American Statistical Association*, 113(524):1710–1721.
- Duane, S., Kennedy, A. D., Pendleton, B. J., and Roweth, D. (1987). Hybrid Monte Carlo. *Physics letters B*, 195(2):216–222.
- Dupuis, J. A. and Robert, C. P. (2003). Variable selection in qualitative models via an entropic explanatory power. *Journal of Statistical Planning and Inference*, 111(1-2):77–94.
- Goutis, C. and Robert, C. P. (1998). Model choice in generalised linear models: A bayesian approach via kullback-leibler projections. *Biometrika*, 85(1):29–37.
- Hager, W. W. (1989). Updating the inverse of a matrix. *SIAM review*, 31(2):221–239.
- Härdle, W. and Stoker, T. M. (1989). Investigating smooth multiple regression by the method of average derivatives. *Journal of the American statistical Association*, 84(408):986–995.
- Kullback, S. and Leibler, R. A. (1951). On information and sufficiency. *The annals of mathematical statistics*, 22(1):79–86.
- Lal, T. N., Chapelle, O., Weston, J., and Elisseeff, A. (2006). Embedded methods. In *Feature extraction*, pages 137–165. Springer.
- Linkletter, C., Bingham, D., Hengartner, N., Higdon, D., and Ye, K. Q. (2006). Variable selection for gaussian process models in computer experiments. *Technometrics*, 48(4):478–490.
- Liu, X., Chen, J., Nair, V., and Sudjianto, A. (2018). Model interpretation: A unified derivative-based framework for nonparametric regression and supervised machine learning. *arXiv preprint arXiv:1808.07216*.
- MacKay, D. J. (1994). Bayesian nonlinear modeling for the prediction competition. *ASHRAE transactions*, 100(2):1053–1062.
- Minka, T. P. (2001). *A family of algorithms for approximate Bayesian inference*. PhD thesis, Massachusetts Institute of Technology.
- Neal, R. M. (1995). *Bayesian learning for neural networks*. PhD thesis, University of Toronto.
- Piironen, J. and Vehtari, A. (2016). Projection predictive model selection for Gaussian processes. In *2016 IEEE 26th International Workshop on Machine Learning for Signal Processing (MLSP)*, pages 1–6. IEEE.
- Rasmussen, C. E. and Williams, C. K. (2006). *Gaussian processes for machine learning*, volume 1. MIT press Cambridge.
- Refenes, A.-P. and Zapranis, A. (1999). Neural model identification, variable selection and model adequacy. *Journal of Forecasting*, 18(5):299–332.
- Ruck, D. W., Rogers, S. K., and Kabrisky, M. (1990). Feature selection using a multilayer perceptron. *Journal of Neural Network Computing*, 2(2):40–48.
- Savitsky, T., Vannucci, M., and Sha, N. (2011). Variable selection for nonparametric gaussian process priors: Models and computational strategies. *Statistical science: a review journal of the Institute of Mathematical Statistics*, 26(1):130.
- Seeger, M. (2000). Bayesian model selection for support vector machines, gaussian processes and other kernel classifiers. In *Advances in Neural Information Processing Systems 12*, pages 603–609. MIT Press.
- Simpson, D., Rue, H., Riebler, A., Martins, T. G., Sørbye, S. H., et al. (2017). Penalising model component complexity: A principled, practical approach to constructing priors. *Statistical Science*, 32(1):1–28.
- Stan Development Team (2017). *Stan Modeling Language Users Guide and Reference Manual*. <http://mc-stan.org>. Version 2.16.0.
- Tipping, M. E. (2000). The relevance vector machine. In *Advances in Neural Information Processing Systems 12*, pages 652–658. MIT Press.
- Vanhatalo, J., Jylänki, P., and Vehtari, A. (2009). Gaussian process regression with student-t likelihood. In *Advances in Neural Information Processing Systems 22*, pages 1910–1918. Curran Associates, Inc.
- Vehtari, A., Ojanen, J., et al. (2012). A survey of Bayesian predictive methods for model assessment, selection and comparison. *Statistics Surveys*, 6:142–228.
- Williams, C. K. and Barber, D. (1998). Bayesian classification with gaussian processes. *IEEE Transactions on Pattern Analysis and Machine Intelligence*, 20(12):1342–1351.
- Williams, C. K. and Rasmussen, C. E. (1996). Gaussian processes for regression. In *Advances in Neural Information Processing Systems 8*, pages 514–520. MIT Press.

- Wipf, D. P. and Nagarajan, S. S. (2008). A new view of automatic relevance determination. In *Advances in Neural Information Processing Systems 20*, pages 1625–1632. Curran Associates, Inc.
- Zhang, H. (2004). Inconsistent estimation and asymptotically equal interpolations in model-based geostatistics. *Journal of the American Statistical Association*, 99(465):250–261.