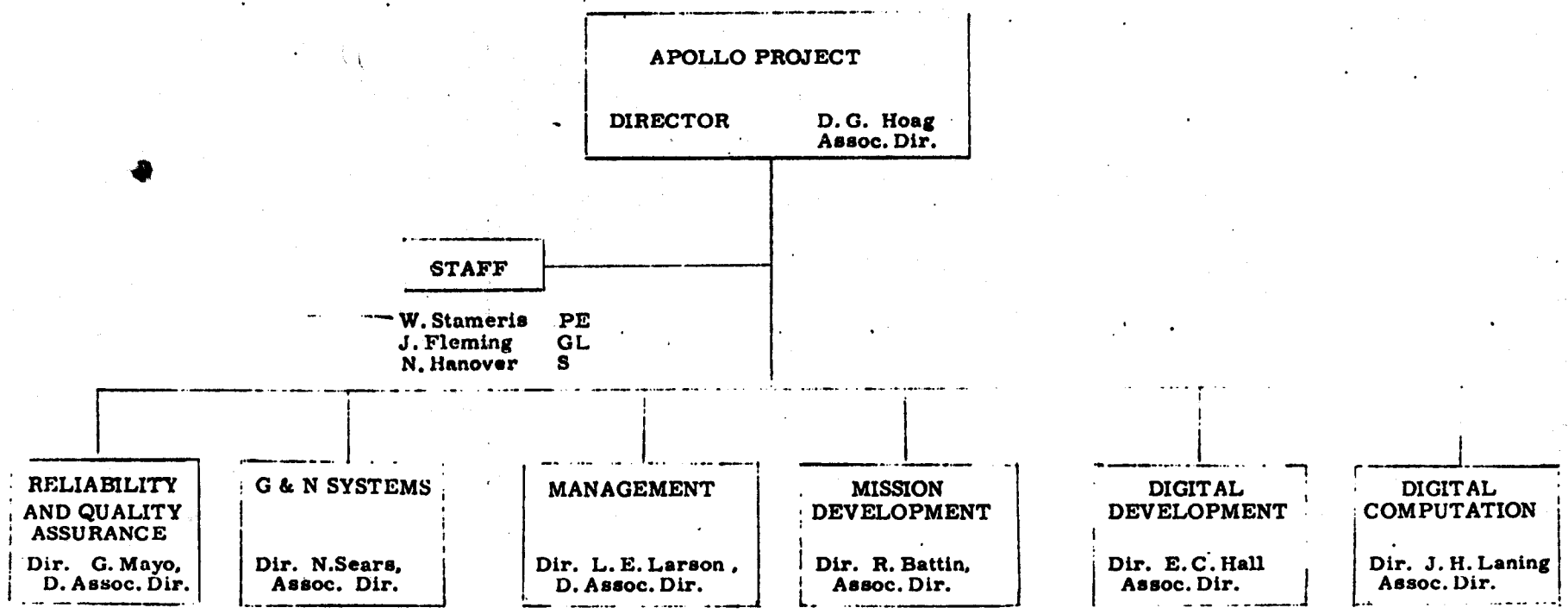


Effective Date 1 February 1972

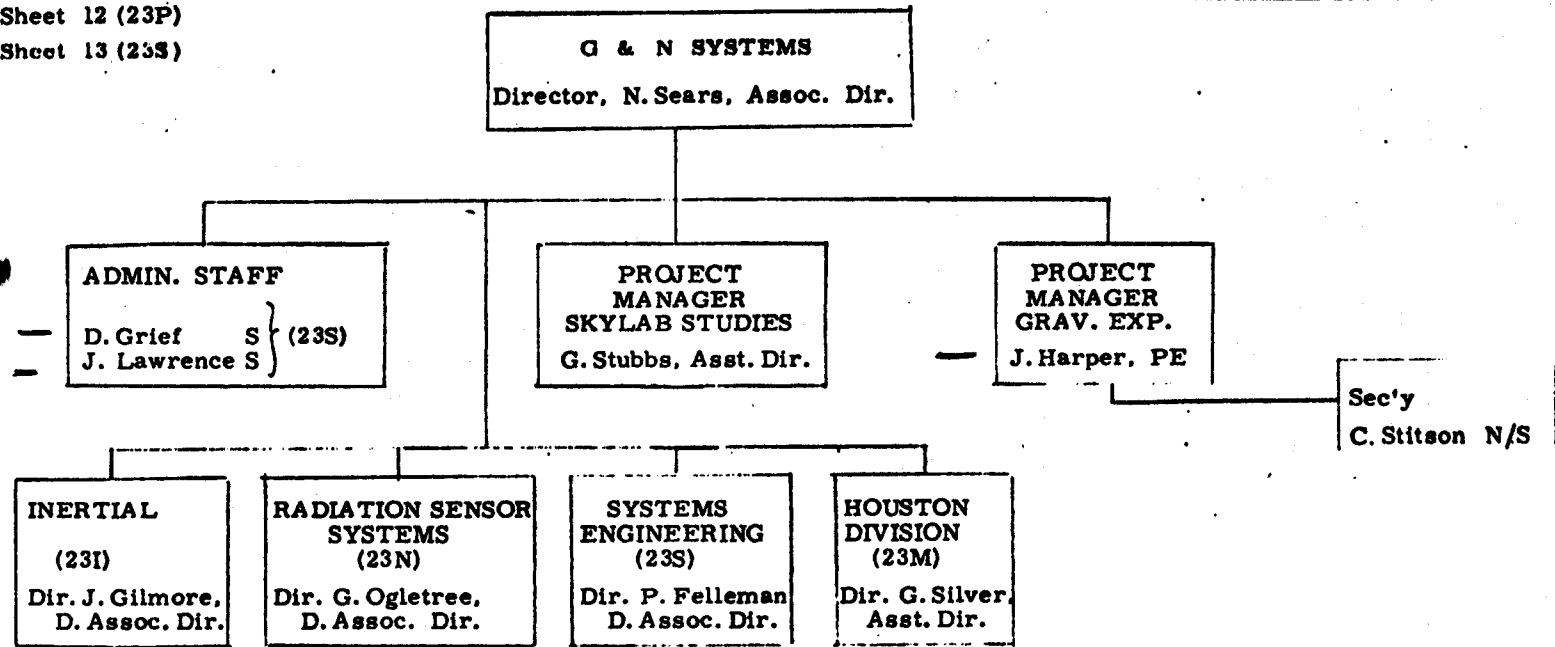
SUMMARY
See Sheet 12 (23P)



SUMMARY

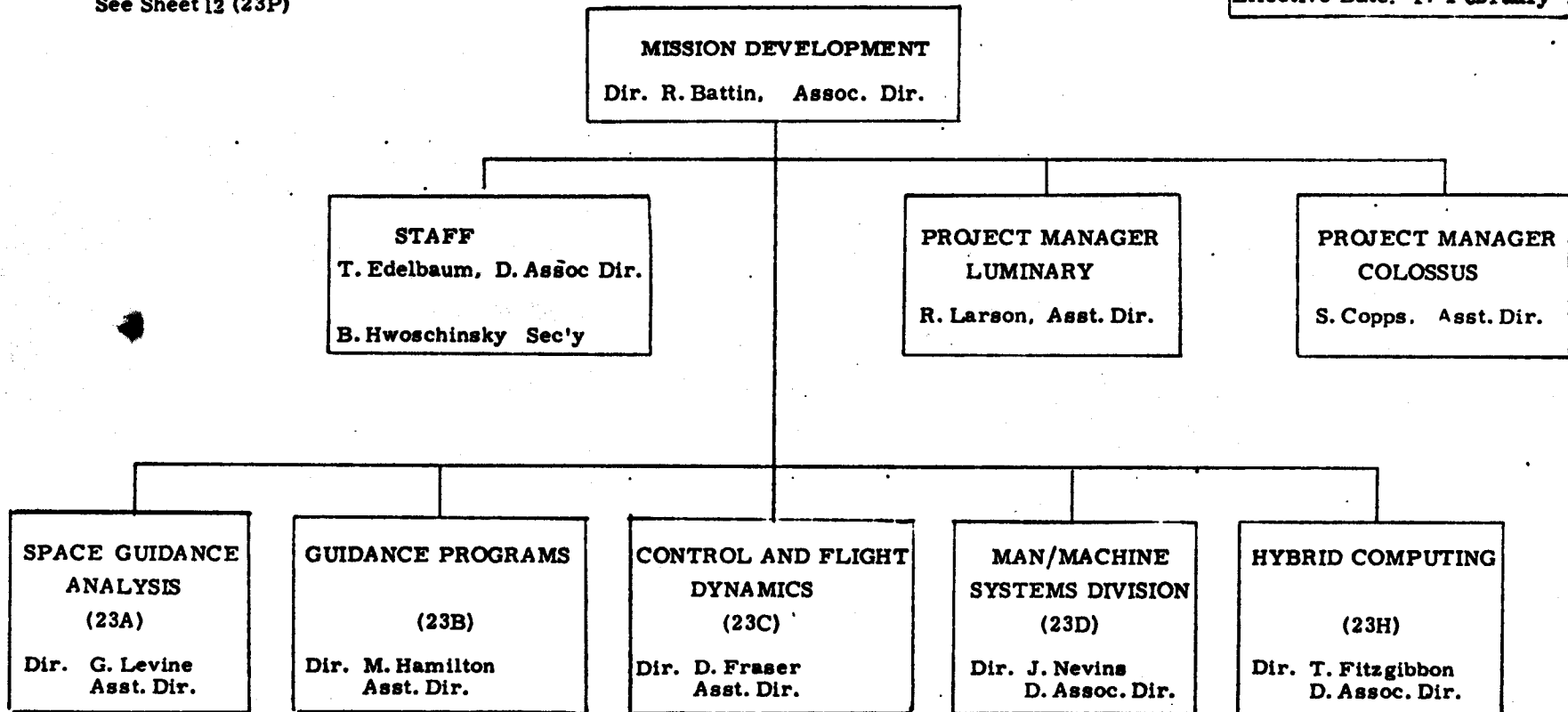
See Sheet 12 (23P)
See Sheet 13 (23S)

Effective Date: 1 February 1972



SUMMARY
See Sheet 12 (23P)

Effective Date: 1. February 1972



SUMMARY

S 15
 RA 3
 N/S 1
 Cons 1

Total 20

Open Req. 2

Loss: Brennan
 Gain: Brown

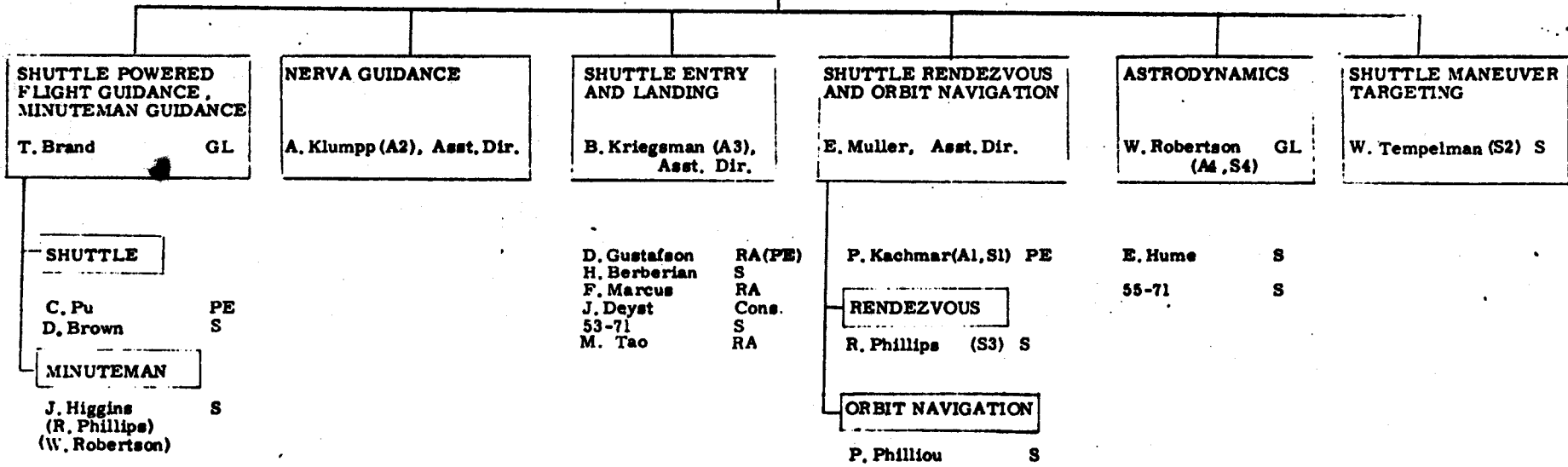
Effective Date 1 February 1972

**SPACE GUIDANCE ANALYSIS DIVISION
 (23A)**

Dir. G. Levine, Asst. Dir.

SEC'Y

D. Lutkevich N/S



APOLLO RESPONSIBILITIES

- A1 Rendezvous
- A2 Landing Guidance
- A3 Landing Navigation
- A4 Astrodynamics

SKYLAB RESPONSIBILITIES

- S1 Rendezvous Navigation
- S2 Rendezvous Targeting
- S3 Rendezvous VHF Filter
- S4 Astrodynamics

Effective Date: 1 February 1972

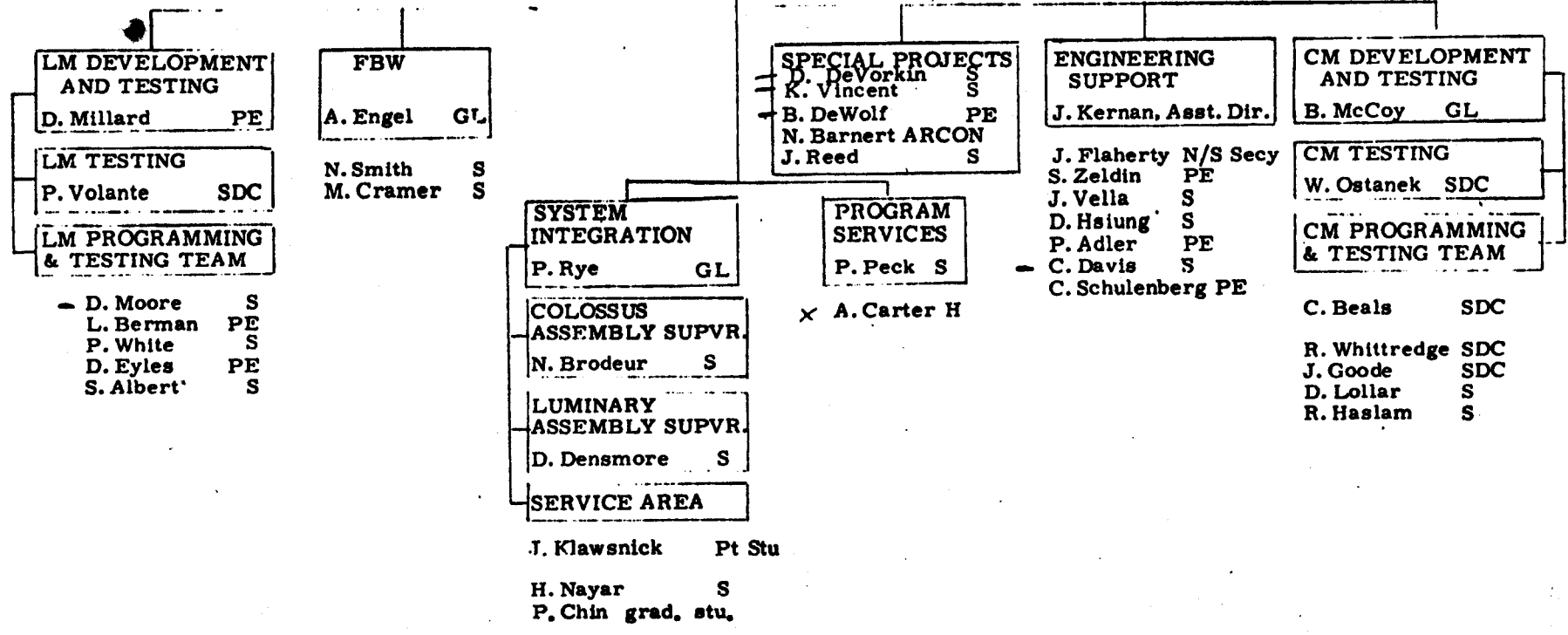
SUMMARY

H - 1
 S - 29
 N/S - 2
 Pt Stu - 1
 S/C - 1
 TOTAL - 40
 Open Req - 1

**MISSION PROGRAM DEVELOPMENT
 (23B)**
 Dir. M. Hamilton, Asst. Dir.

2-72

SEC'Y C. Taylor N/S
 K. Flynn TAD



SUMMARY

Cons	1
S	17
RA	6
N/S	2
<hr/>	
Total	26

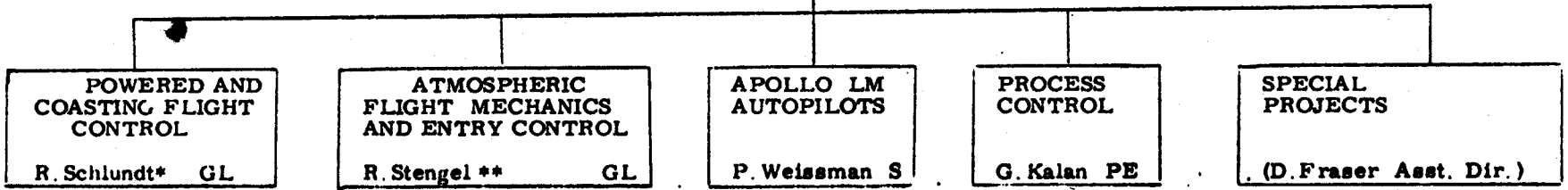
Loss:
Weinreich

Effective Date 1 February 1972

**CONTROL AND FLIGHT
DYNAMICS DIVISION
(23C)**
Dir. D. Fraser, Asst. Dir.

SEC'Y

M Erickson N/S
J Whittemore N/S



E. Jones S
A. Penchuck S
J. Turnbull S
P. Basile RA

C. Wischmeyer RA

R. Bairnsfather PE
R. Ramnath S
R. Goss S
E. Womble RA

C. Work S

D. Keene PE
H. Jones RA
M. Froidevaux RA

J. Deckert S
J. Potter Cons
S. Croopnick S
L. Sackett S
J. Speyer S
L. D'Amario RA

* Coordinator, Colossus
** Coordinator, STS

SUMMARY

PtStu - 2
 S - 19
 RA - 4
 N/S - 2
 H - 3
 Total - 30

Change:
 Groome S to RA

Effective Date: 1 February 1972

MAN/MACHINE SYSTEMS (MMS) DIVISION
 (23D)
 Dir. J. L. Nevins, D. Assoc. Dir.

GROUP SEC'Y
 N. Auker N/S

APOLLO, SKYLAB AND SHUTTLE
 I. Johnson, Asst. Dir.

ADVANCED DISPLAY TECHNIQUES
 I. Johnson, Asst. Dir.

DISPLAY / SIM. HARDWARE AND CLINICAL LAB.
 R. Metzinger, Asst. Dir.

TELEOPERATOR SYSTEMS. TECHNICAL DIRECTOR
 E. A. Woodin, Asst. Dir.

CONSULTANT
 Prof. T. B. Sheridan

GRAVIMETER
 T. Anderson PE
 R. Schulte S

CREW PROCEDURES AND OPERATIONS SUPPORT
 J. Dunbar * PE

APOLLO MISSION VERIFICATION, HF & TRAINING
 R. Kiburz S

ANALYSIS AND PROGRAMMING
 D. Killoran PE

DESIGN
 J. Scanlon S

ASST. TECH. DIR.
 Prof. D. Whitney

SEP
 I. Johnson
 Asst. Dir.

F. Walsh S
 S. Drake S
 L. Groome RA
 T. Chan S

J. Hrones S

S. Holford S
 K. Sorenson S
 M. Perkins S

D. Mullen RA
 J. Mirro PtStu
 A. Townsend PtStu
 C. Snell RA

STAFF
 P. Watson GL
 R. Sturgis S

BIO-MED 4022
 T. Rhyne RA

TECHNICAL SUPPORT
 A. Dimambro N/S

* D. L. Eng. Test Pilot

J. Ford H
 H. Nesbit H
 S. Tivnan H

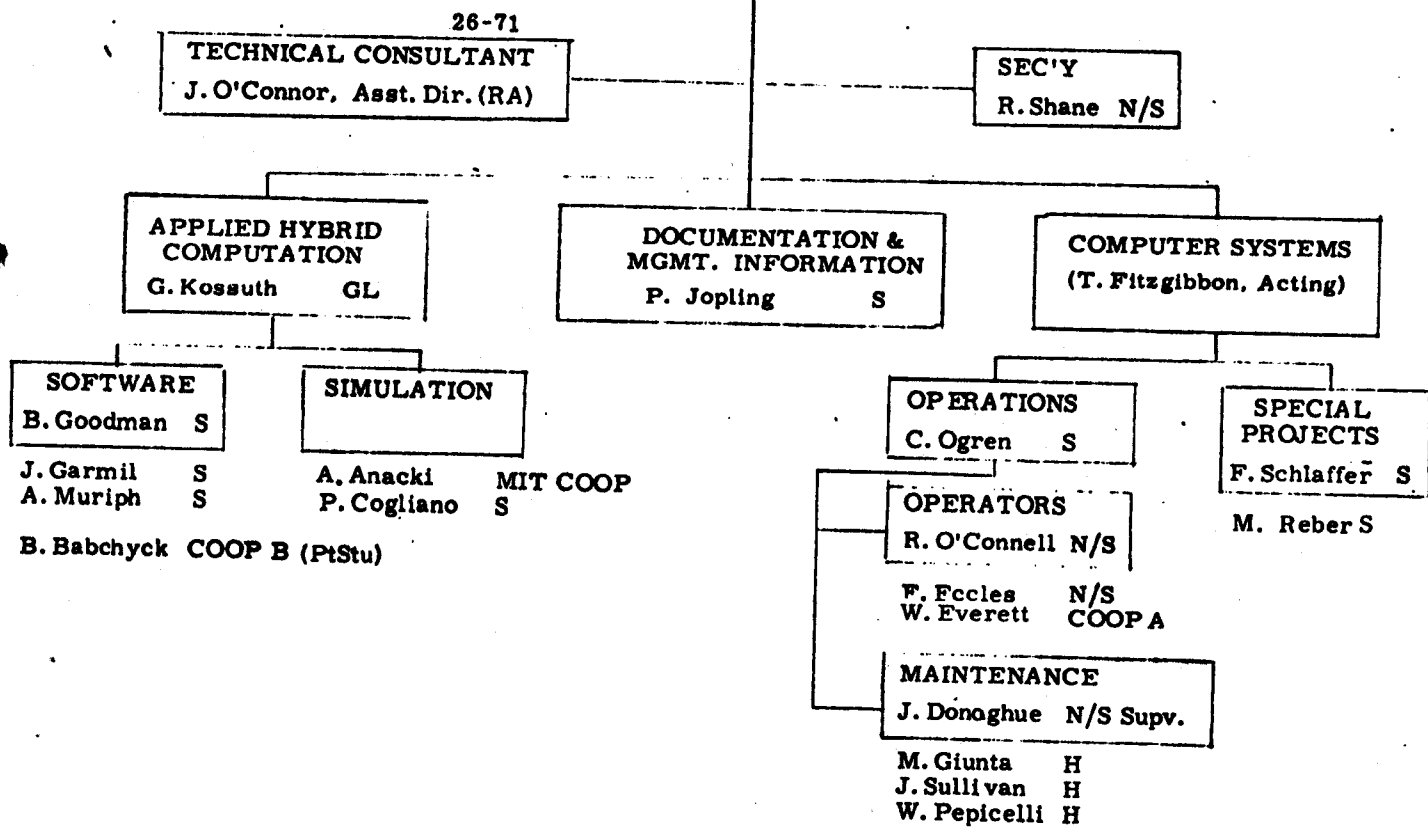
SUMMARY
 PtStu - 1
 S - 10
 N/S - 4
 H - 3
 COOP - 2
 RA - 1
 Total - 21

Open Req. - 1

Gain: Anacki
 Loss: Lombardo

HYBRID COMPUTING DIVISION
 (23H)
 Dir. T. Fitzgibbon, D. Assoc. Dir.

Effective Date: 1 February 1972



Effective Date 1 February 1972

SUMMARY

S	22
RA	2
N/S	3
H	6
PtStu	2
COOP	1
Total	36

Change: Chien RA to S
Gain: McWilliams

INERTIAL SUB-SYSTEMS
(231)
Dir. J. Gilmore, D. Assoc. Dir.

SPECIAL PROJECTS
R. Cooper, Asst. Dir.

ADMIN STAFF

SEC'Y
D. Farrell N/S

LABORATORY TEST & CONSTRUCTION
** D. Hall Tech. Supvr. N/S

A. DeVito H
C. Peckham Coop A
J. McWilliams PtStu (Coop B)

REQUIREMENTS & ANALYSIS
R. McKern, Asst. Dir.

INERTIAL COMPONENTS
J. Feldman, GL

SYSTEMS DEVELOPMENT
R. Booth GL

ANALYSIS
H. Musoff PE

SOFTWARE DEVELOPMENT

GYRO EVALUATION

IC ANALYSIS & STATISTICS
J. Feldman GL (Act.)

ACCELEROMETER EVALUATION
G. Bukow PE

INTERFACE AND TEST EQUIPMENT SUPPORT

SIRU
T. Shuck** GL

SPOT

T. Chien S
K. Vincent S***
D. Patterson RA
D. Torrealia PtStu
M. Johnson PE

J. Oehrle S
D. Dove S
M. Landey S

E. Salamin S
J. Sinkewicz S
W. Sartanowicz H

C. Lory S
S. Helfant S
L. Willy N/S
B. Graham RA

F. Merenda S
S. Katz S
A. Moore H
F. Moore H

D. Brown S
D. Sprague S
D. Woodbury H

D. Swanson PE
W. Trosky H
R. Blaha S*

* On Loan From 23S
** On Loan To 22F
*** On Loan From 23B

Effective Date 1 February 1972

SUMMARY

S	22
RA	2
N/S	3
H	6
PtStu	2
COOP	1
Total	36

Change: Chien RA to S
Gain: McWilliams

INERTIAL SUB-SYSTEMS
(231)
Dir. J. Gilmore, D. Assoc. Dir.

SPECIAL PROJECTS
R. Cooper, Asst. Dir.

ADMIN STAFF

SEC'Y
D. Farrell N/S

LABORATORY TEST & CONSTRUCTION
** D. Hall Tech. Supvr. N/S

A. DeVito H
C. Peckham Coop A
J. McWilliams PtStu (Coop B)

REQUIREMENTS & ANALYSIS
R. McKern, Asst. Dir.

INERTIAL COMPONENTS
J. Feldman, GL

SYSTEMS DEVELOPMENT
R. Booth GL

ANALYSIS
H. Musoff PE

SOFTWARE DEVELOPMENT

GYRO EVALUATION

IC ANALYSIS & STATISTICS
J. Feldman GL (Act.)

ACCELEROMETER EVALUATION
G. Bukow PE

INTERFACE AND TEST EQUIPMENT SUPPORT

SIRU
T. Shuck** GL

SPOT

T. Chien S
K. Vincent S***
D. Patterson RA
D. Torrealia PtStu
M. Johnson PE

J. Oehrle S
D. Dove S
M. Landey S

E. Salamin S
J. Sinkewicz S
W. Sartanowicz H

C. Lory S
S. Helfant S
L. Willy N/S
B. Graham RA

F. Merenda S
S. Katz S
A. Moore H
F. Moore H

D. Brown S
D. Sprague S
D. Woodbury H

D. Swanson PE
W. Trosky H
R. Blaha S*

* On Loan From 23S
** On Loan To 22F
*** On Loan From 23B

SUMMARY

S - 6
N/S - 1
Total - 7

Effective Date: 1 February 1972**HOUSTON DIVISION
(23M)****Dir. G. Silver. Asst. Dir.**

E. Olsson	Asst. Dir.
T. Lawton	GL
G. Reasor	S
K. Goodwin	S
A. Cook	S
M. Bittenbender	N/S Sec'y

Effective Date: 1 February 1972

SUMMARY

S 13
 Pt S 1
 PTSTU 1*
 N/S 3
 H 2
 RA 2
 Total 22

Gain: Brennan

**RADIATION SENSOR SYSTEMS
 DIVISION
 (23N)**
 Dir. G. Ogletree, D. Assoc. Dir.

**APOLLO, SEP, SKYLAB &
 SSV PROGRAMS SUPPORT
 COORDINATION**
 L. Johnson, Asst. Dir.

SECRETARY
 G. Grover N/S
 K. Petigara PT STU *

SPECIAL PROGRAMS
 M. Smith GL
 D. Yankovich GL
 J.D. Coccoli PE
 C. Whitney Pt S
 D. Jansson RA
 J. Liebesny RA
 P. Brennan S

**TEST & EVALUATION
 SUPPORT FACILITIES**
 E. Mechler Tech. Supvr. N/S
 P. Marchi H
 J. Mastroelli H

**SEP
 PROGRAM
 OFFICE
 SUPPORT**

**RADAR
 SUBSYSTEMS
 SUPPORT**

**ELECTRO-OPTICS
 SUBSYSTEMS
 SUPPORT**

**NAVIGATION
 PLANNING AND
 ANALYSIS SUPPORT**

W. Saltzberg S

E. Blanchard PE
 W. Tanner PE

L. Yorgy GL
 G. Karthas PE
 G. Davidson S
 W. DeRusso N/S

J. T. Parr GL

* Part-time student for temp. clerical assistance,
 Jan, Feb 1972.

SUMMARY

S 17
N/S 5
PtStu 1

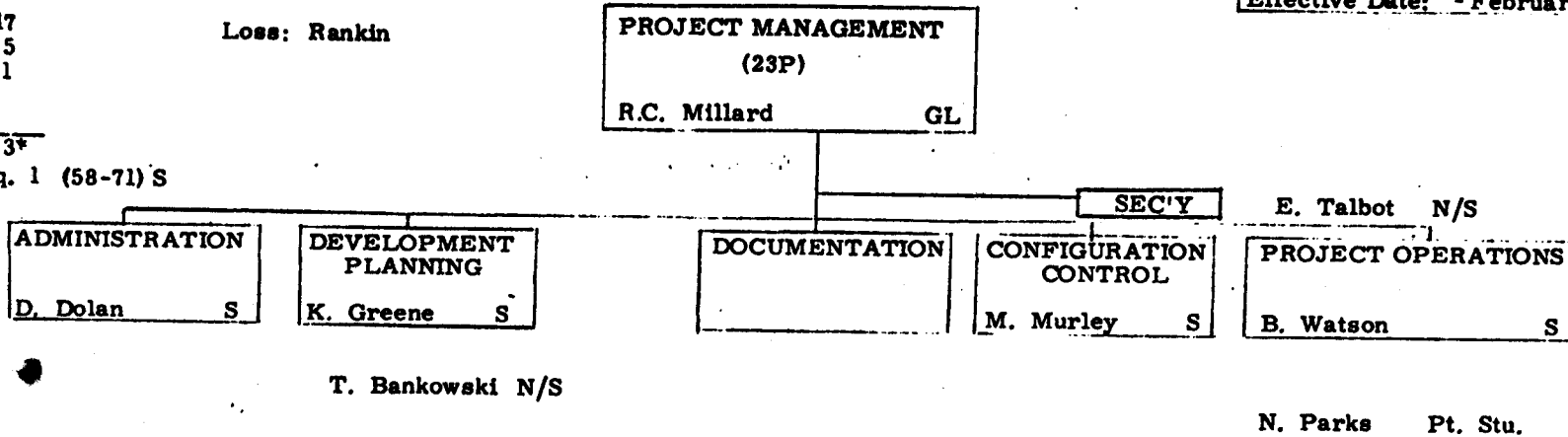
Loss: Rankin

Effective Date: 1 February 1972

Total 23*

Open req. 1 (58-71) S

*Includes 23P
from Pages 1,
2, and 3.



The following personnel are members of Group 23P

- R. Battin S	- G. Stubbs S	T. Bankowski N/S
- D. Hoag S	- R. Millard S	B. Hwoschinsky N/S (Sec'y)
- N. Sears S	- D. Dolan S	E. Johnson N/S (Sec'y)
- L. Larson S	- K. Greene S	E. Talbot N/S (Sec'y)
- S. Copps S	M. Murley S	
T. Edelbaum S	<u>W. Stameris</u> S	C. Stitson N/S (Sec'y)
J. Fleming S	- B. Watson S	N. Parks Pt. Stu.
J. Harper S	N. Hanover S	
- R. Larson S		

SUMMARY

S - 36
 N/S - 5
 H - 7
 COOP - 1
 RA - 1
 TOTAL - 50
 Open req. 1

Gain:
 Chao

SYSTEM ENGINEERING DIVISION

(23S)

Dir. P. G. Felleman, D. Assoc. Dir.

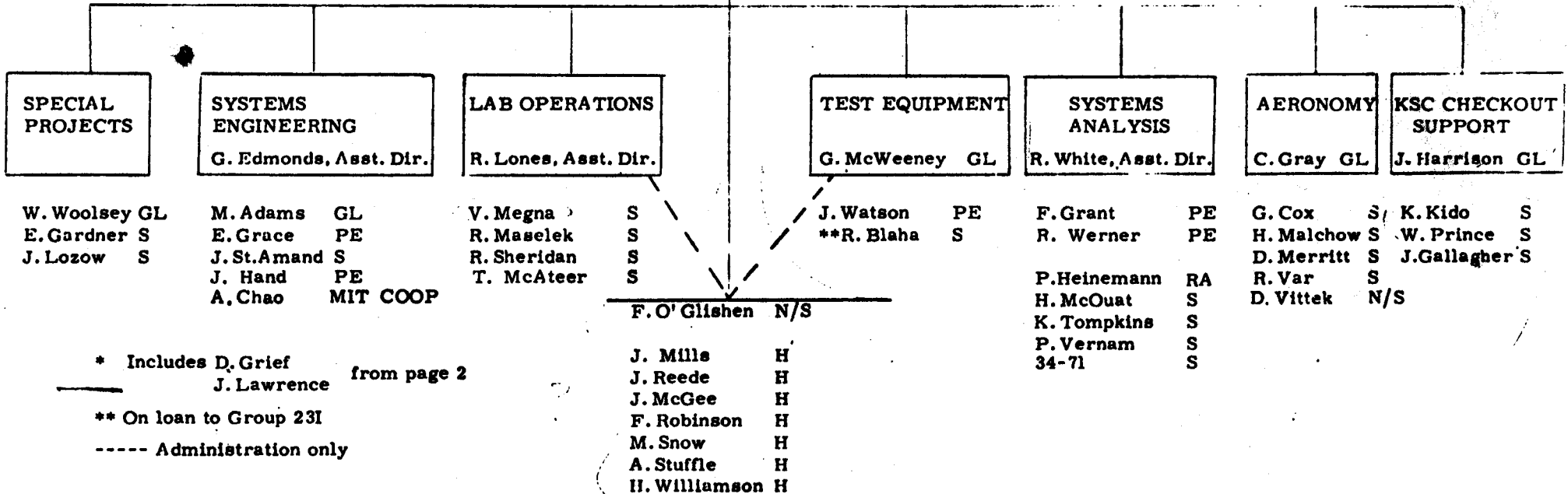
Effective Date: 1 February 1972

KSC TOD: R. O' Donnell Asst. Dir.

SEC' Y

P. Amsler N/S
 J. Grinnell N/S

R. Gilbert S
 J. Stevenson N/S Sec'y



* Includes D. Grief from page 2
 J. Lawrence

** On loan to Group 23I

----- Administration only

SUMMARY

S 41
 RA 2
 N/S 17
 PtStu 1

Total 61
 IBM 3

Open req. 1

DIGITAL COMPUTATION GROUP
 (33)

Dir. J. H. Laning, Assoc. Dir.

Effective Date 1 February 1972

SEC'Y

F. Harding N/S

**SAMSO
SOFTWARE**
 D. Hamilton GL

S. Femino S
 P. Stasiowski S
 S. Deutsch S
 S. Bryant S

**COMPUTATION
PROJECTS**
 K. Glick Asst. Dir.

**BIOMEDICAL
SUPPORT**
 (K. Glick acting)

R. Warren S
 D. Latimer PE
 S. David S
 J. Keenan S
 61-71 S

**DISPLAY
PROJECTS**
 P. Mimno Asst. Dir.

D. Sarachik S
 W. Taylor S
 D. Endo S
 J. Franck PtStu
 P. Wolfe S
 P. Mockapetris S

**FIAT
PROJECT**
 L. Quagliata GL

S. Brosio RA
 G. Alvarez-Correa RA
 D. Lynde S
 S. Gershwin S
 R. Asare N/S

**SOFTWARE
RESEARCH**
 P. Roberts Asst. Dir.

G. Mansbach S
 N. Pippenger S

OPERATIONS
 J. Mori GL

R. Conti N/S
 W. Durkin N/S
 W. Hook N/S
 C. Sacco N/S
 A. Bonaventura N/S
 R. Shine N/S
 C. Battinelli N/S
 R. Boucher N/S
 R. Cambell N/S
 R. Generazzo N/S
 R. Gianino N/S
 J. Nickerson N/S
 M. Patterson N/S
 E. Murray N/S
 C. Ring N/S
 C. Caranci IBM
 J. Williams IBM
 R. Unsworth IBM

SYSTEMS
 E. Sabine S

G. Vining S
 C. Murphy S

**COMPUTATION
SERVICES**
 R. Russell D. Assoc. Dir.

**USER
SERVICES**
 D. Crocker PE

B. Silver S
 A. Hathaway S
 M. Pennell S
 R. Pinckney PE
 M. Katz S
 K. Lloyd S

SUMMARY

S 24*
 N/S 7
 PtStu 1
 H 4
 Cons 1
 RA 3

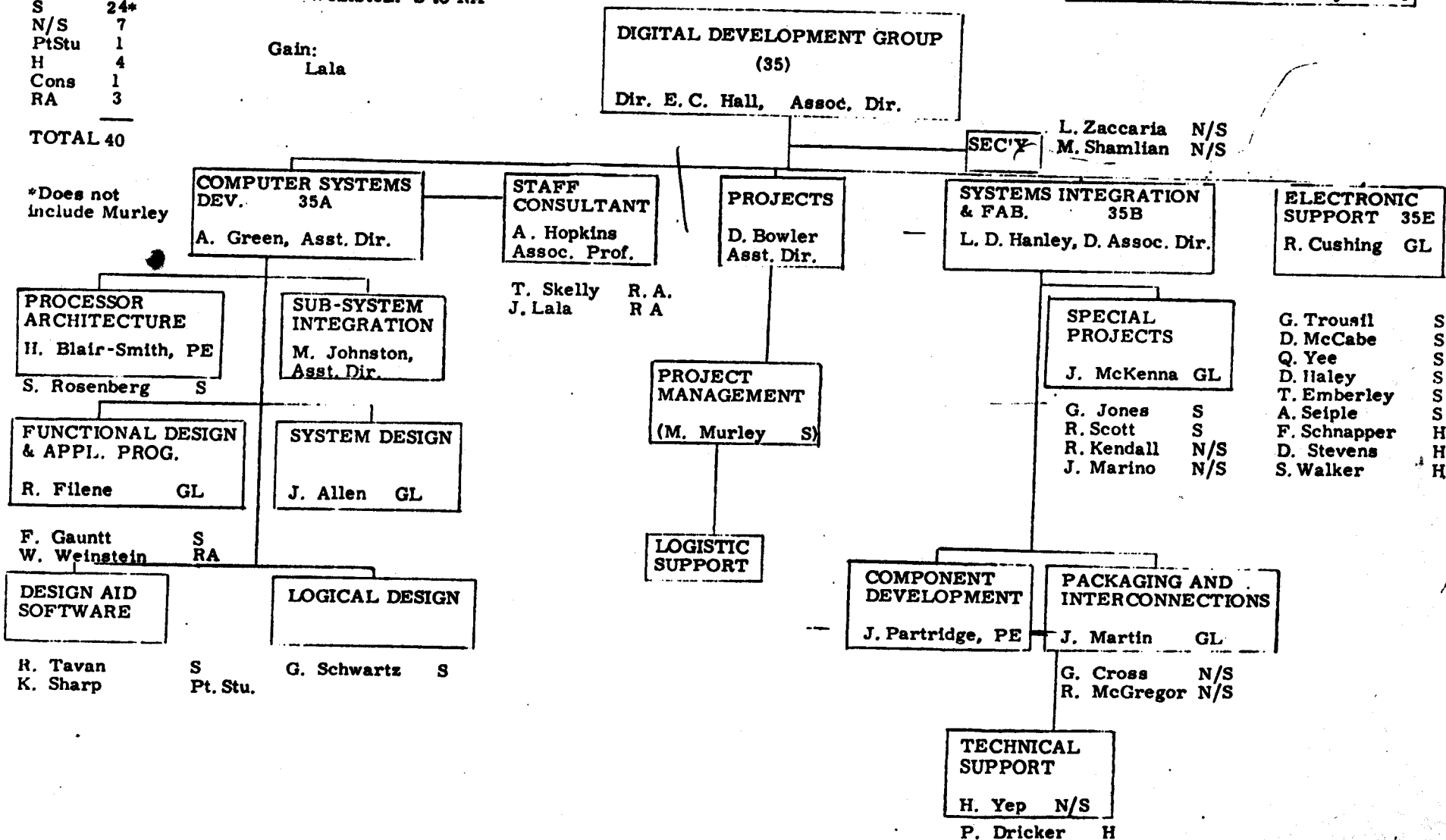
TOTAL 40

*Does not include Murley

Change:
 Weinstein S to RA

Gain:
 Lala

Effective Date: 1 February 1972



SUMMARY

S 8
N/S 12
H 16

Total 37

Effective Date 1 February 1972

