

## Apogee Driver Installation and verification test

### *Applicable to Apogee Camera Range (Alta/Aspen/Ascent)*

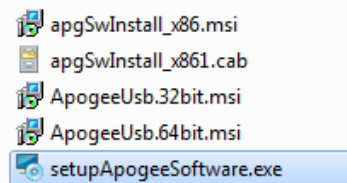
This guide will demonstrate how to install and test the Apogee camera drivers.

### Initial considerations

For demonstration and verification purposes, this document has been created using an Aspen camera on the *Apogee Camera Control Demo Program*, freely available from the Andor website <sup>[1]</sup>. The following process will be similar for other applications.

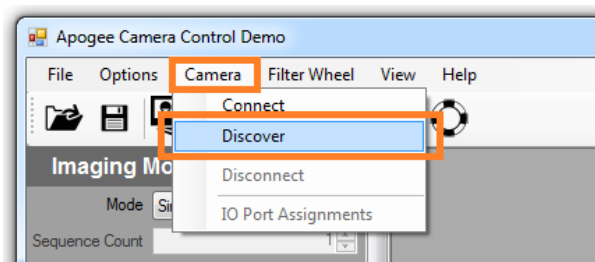
### Method

- Download the Apogee SDK from the Apogee downloads section of the Andor website <sup>[2]</sup>. The Apogee SDK is 32-bit but includes both 32-bit and 64-bit versions of the Apogee camera drivers.
- Extract the Apogee SDK .zip folder and run the *setupApogeeSoftware.exe*.

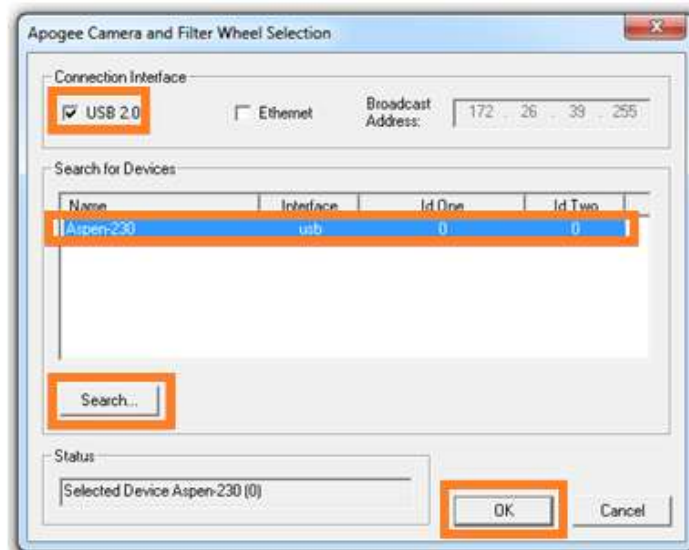


- Follow the on-screen instructions to install the software.
- Power ON the camera and connect to the PC using a USB cable. The camera should automatically be detected and the driver installed.
- Run the *Apogee Camera Control Demo* application to confirm camera operation <sup>[1]</sup>.
- Select *Discover* from the *Camera* menu to open the Camera and Filter Wheel Selection Window.

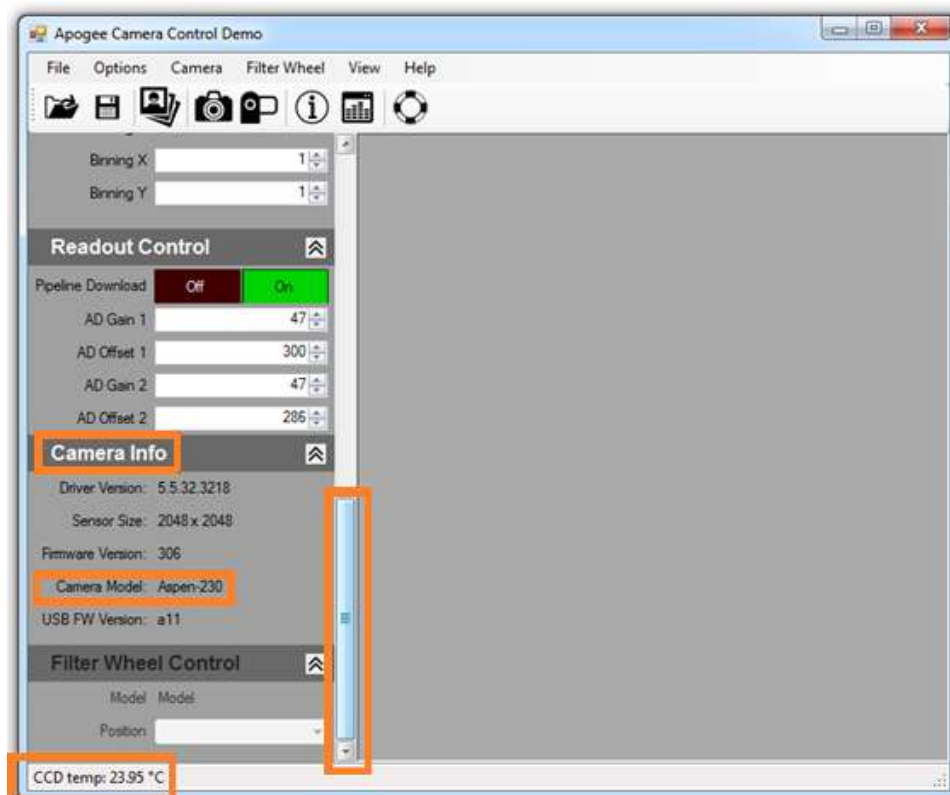
(Note, if setting up an Ethernet connection, see the **Simple setup of Ethernet control for Apogee Aspen cameras** document on the Andor Support webpage <sup>[3]</sup>)



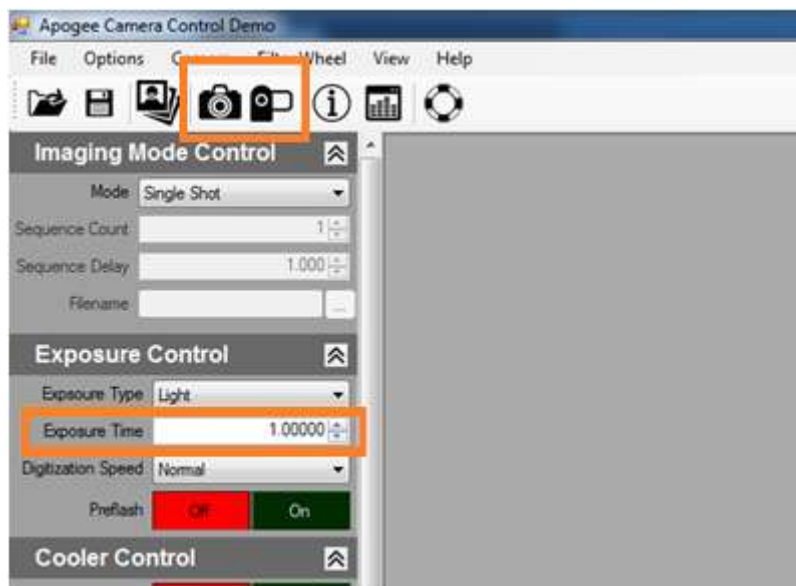
- Select *USB 2.0* as the Connection Interface and then press the *Search* button. Any device that is detected will be listed in the *Search for Device* window. Select the device you wish to control and press *OK*.



- If the connection is successful then the camera model will be listed in the *Camera Info* section in the bottom left corner of the program Window. The CCD temperature will also be displayed indicating that the drivers have successfully been installed and the program can successfully communicate with the camera



- Further testing can be performed to check the camera functionality by taking an acquisition - set an exposure time and select the *Take Image* or *Live Video* buttons.

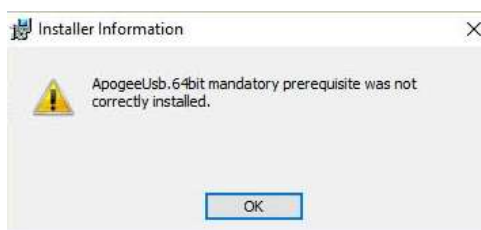


## Troubleshooting

### Camera not found

Confirm that the Apogee USB driver has been correctly installed from the Device Manager (Control Panel – System – Hardware – Device Manager)

**Error message during installation process: 'ApogeeUSB.64bit mandatory prerequisite was not correctly installed'**



Cancel the installation and disconnect all USB device (USB memory sticks, USB hard drives, etc – excluding keyboard, mouse). Run the Apogee SDK installer once again and complete the installation process ensuring that the Apogee camera has been attached to the PC using the USB cable. Any other devices can be reconnected once the installation has complete.

If you require further information or assistance, please contact your local Andor Product Support representatives <sup>[3]</sup>.

## Useful links

<sup>[1]</sup> Apogee Camera Demo Program - <http://www.andor.com/pdfs/software/ApogeeCameraControlDemo.exe>

<sup>[2]</sup> Apogee SDK Download link - <http://www.andor.com/pdfs/software/apgSwInstall-x86.zip>

<sup>[3]</sup> Product Support - <http://www.andor.com/ContactSupport>