



United States
Department of
Agriculture

Foreign
Agricultural
Service

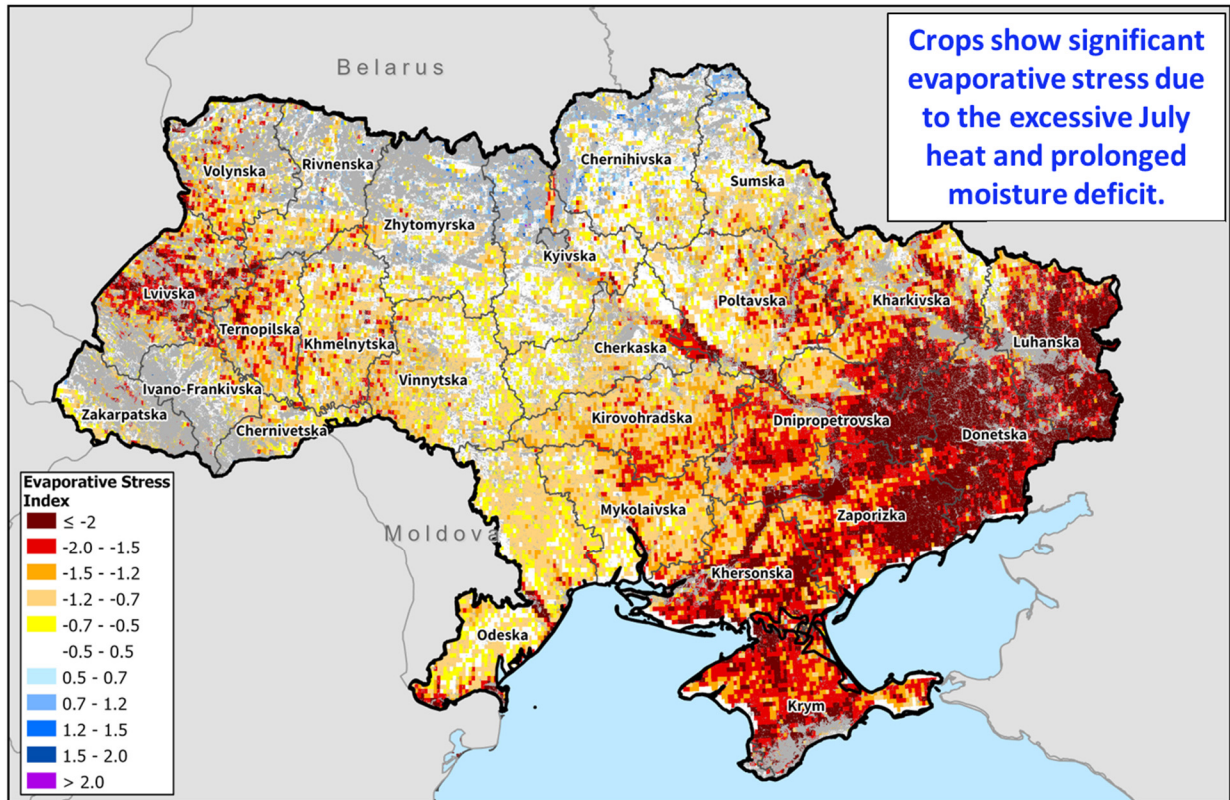
Circular Series
WAP 8-24
August 2024

World Agricultural Production

Ukraine Corn: Downward Yield Revision Due to Unfavorable Weather

Ukraine corn production for marketing year (MY) 2024/25 is forecast at 27.2 million metric tons, down 2 percent from last month and down 16 percent from last year. Yield is forecast at 6.63 tons per hectare, down 7 percent from last month and 14 percent from last year. Harvested area is forecast at 4.1 million hectares, up 5 percent from last month, but down 2 percent from last year.

Ukraine Evaporative Stress Index (May 7 - July 29, 2024)



Sources: NASA; GFSAD 30 m crop cover (2015)

At present, Ukraine can be divided into two zones, areas in conflict and areas not in conflict. As elaborated by FAS/Kyiv in Ukraine, due to the ongoing war there is no official and reliable information about the status of Ukraine's agriculture in the conflict zone. As a result, area and production data currently provided by FAS/Kyiv, Ukraine's Ministry of Agriculture (MinAg) and

Approved by the World Agricultural Outlook Board

the State Statistical Service of Ukraine, which inform USDA's forecasts, do not reflect the whole country. For the MY 2024/25 season, the MinAg operational field data information for both the MY 2024/25 winter and spring crops excludes the temporarily occupied territory of the Donetsk, Zaporizhzhia, Luhansk and Kherson regions. This is based on a note included in the MinAg operational field reports. MinAg also does not include Crimea in the reports, but USDA crop production estimates for Ukraine do include estimated output from Crimea. Crimean area and production numbers are extracted from the agricultural crop reports provided by the Russian Statistical Agency, Rosstat.

Ukraine Corn: Heat and Below-average Precipitation Threatens Crop



Brighter green color in the 2023 (lower) image indicates better crop vigor compared to this season's (upper) image. Source: Planet Labs

This month's downward yield revision is prompted by continual unfavorable weather since the start of the season. Persistent below-average precipitation and excessive early to mid-July heat led

to a substantial soil moisture deficit across all major crop growing regions in Ukraine. The impact of the sub-optimal growing conditions revealed significant crop stress.

Ukraine Corn: Crop Stress Due to Drought



Fieldwork by FAS/Kyiv at the start of the yield formation stages for corn in late July revealed spotty crop conditions across Vinitsa and Cherkasi. The cracked soils indicate soil moisture deficit, and the yellowing leaves suggest drought induced stress.

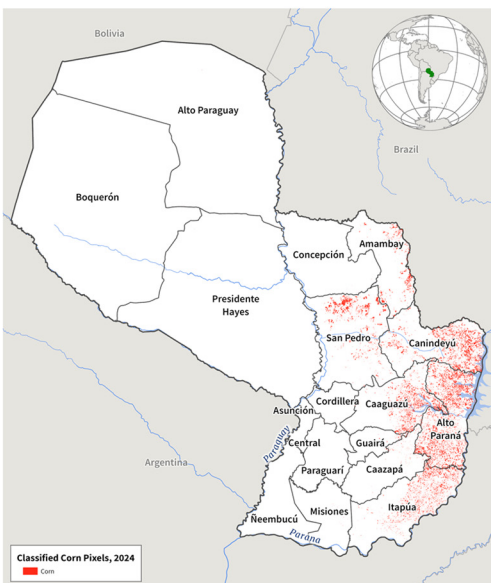
Photo Courtesy: FAS/Kyiv

Fieldwork by FAS/Kyiv during key yield formation stages for corn in late July and early August revealed spotty crop conditions, however, field access is limited due to the ongoing conflict. Harvest begins in early September. The month-to-month increase in area is based on higher estimated area for MY 2023/24, which was revised higher reflecting marketing year use data to date. *(For more information, please contact Iliana.Mladenova@usda.gov.)*

Paraguay Corn: MY 2023/24 Production Down Due to Decreased Area and Hot and Dry Weather in the Northern Growing Regions

Paraguay corn production for marketing year (MY) 2023/24 is estimated at 3.2 million metric tons, down 33 percent from last month, and down 37 percent from MY 2022/23. Yield is estimated at 4.27 tons per hectare, down 29 percent from last month and from MY 2022/23 due to hot and dry weather in the northern growing areas. Harvested area is estimated at 750,000 hectares, down 6 percent from last month, and down 12 percent from MY 2022/23.

2024 Paraguay Corn Classification



Source: Copernicus Sentinel Data (2024)

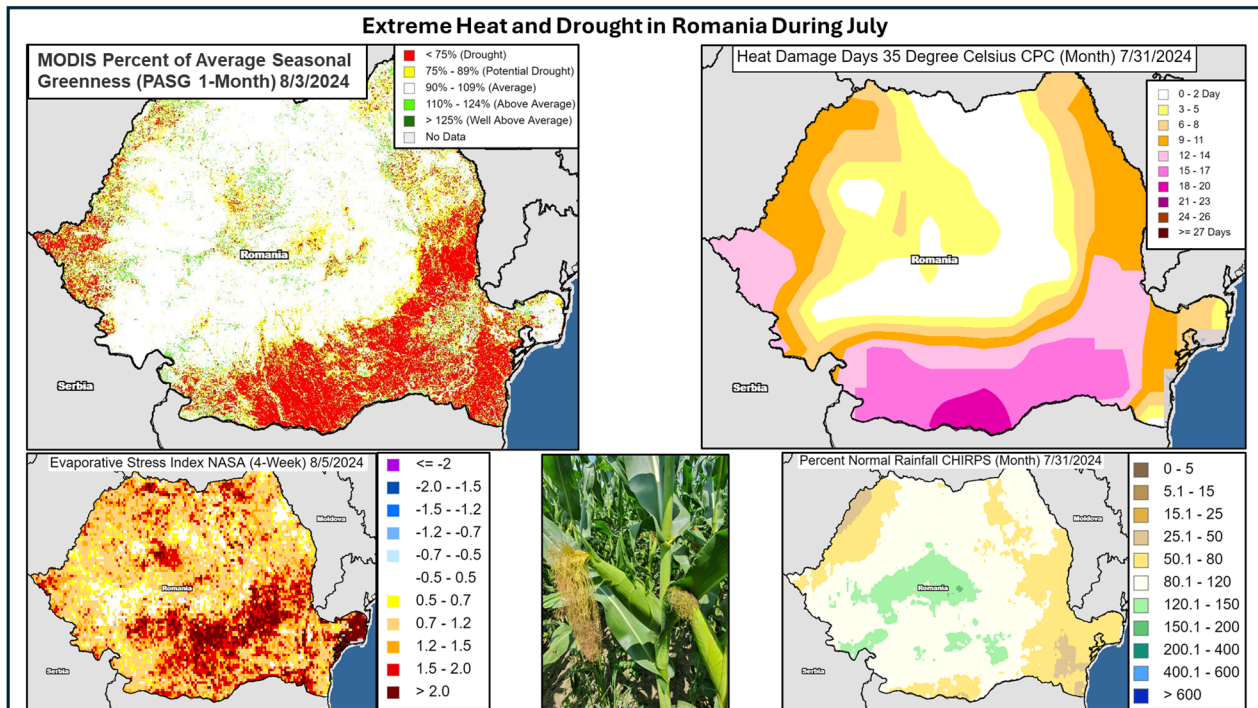
1. **Imagery:**
 - Sentinel-2 Surface Reflectance (Harmonized), 10m resolution
2. **Classification Tools:** Google Earth Engine, Support Vector Machine (SVM) Classifier
3. **Classified Imagery Dates (2023/24 Corn Seasons):**
 - 1st Season: 12/10/2023 – 1/10/2024 [Peak NDVI for each pixel selected]
 - 2nd Season: 4/10/2024 – 5/20/2024 [Peak NDVI for each pixel selected]
4. **Training Data Points and Imagery Dates:**
 - WorldCereals Brazil 2020 collection
 - Optical sampling of other landcover types in 2024

State	Total Corn Area (ha)
Alto Parana	256,536
Amambay	42,213
Caaguazú	109,843
Canindeyú	155,215
Itapúa	104,768
San Pedro	86,292
Remainder of PY	8,886
Total	763,753

Paraguay has two corn seasons, first and second planted corn. First planted corn is the smaller crop (about 17 percent of production on average), when planting occurs from June through September and harvest occurs from January through March. Second planted corn is the larger crop season (about 83 percent of production on average). Planting occurs January through March and harvest occurs May through August. *Cámara Paraguaya de Exportadores y Comercializadores de Cereales y Oleaginosas* (CAPECO), an industry source in Paraguay, published area for MY 2023/24 at 750,000 hectares which matches an independent assessment done by USDA. Using Google Earth Engine, a crop classification was conducted for both corn seasons and the total planted corn area was estimated at 764,000 hectares, supporting the new harvested area estimate. (For more information, please contact Katie.McGaughey@usda.gov.)

Romania Corn: Production Lowered as Extreme Heat and Dryness Occurs During Critical Periods

Corn production in Romania for marketing year (MY) 2024/2025 is forecast at 8.7 million metric tons (mmt), down 2.2 mmt (20 percent) from last month, down 1.5 mmt (15 percent) from last year, and 24 percent below the 5-year average. Harvested area is forecast at 2.2 million hectares, down 156,000 hectares or 7 percent from last month, down 2 percent from last year, and 13 percent below the 5-year average. Yield is forecast at 4.03 tons per hectare, down 14 percent from last month and down 13 percent from both last year and the 5-year average.



Romania has the European Union’s second-largest area planted with corn for grain, behind France. Corn is Romania’s predominant summer grain, but with minimal irrigation the crop is highly susceptible to the extreme high temperatures and drought that often occur in the Balkan region during summer. Romania’s corn is typically in the silking and pollination crop stages during early and mid-July and the grain-fill stage in late July and August. During MY 2024/25, these unfavorable conditions co-existed, decreasing yields. Satellite-derived Percent of Average Seasonal Greenness (PASG) shows areas of reduced vegetation vigor along the Danube River, while evaporate stress, high temperatures, and a lack of precipitation are also clearly visible in the July summary maps. Additionally, crop travel in eastern areas of the country, conducted by staff from FAS/Bucharest, confirmed the deterioration of the crop. While also doing poorly, the areas in western Romania are not nearly as bad as those in the south and east because the conditions in the west have not been as severe.

Râmnicu Sărat, Buzău County
Southeast Romania
July 19, 2024



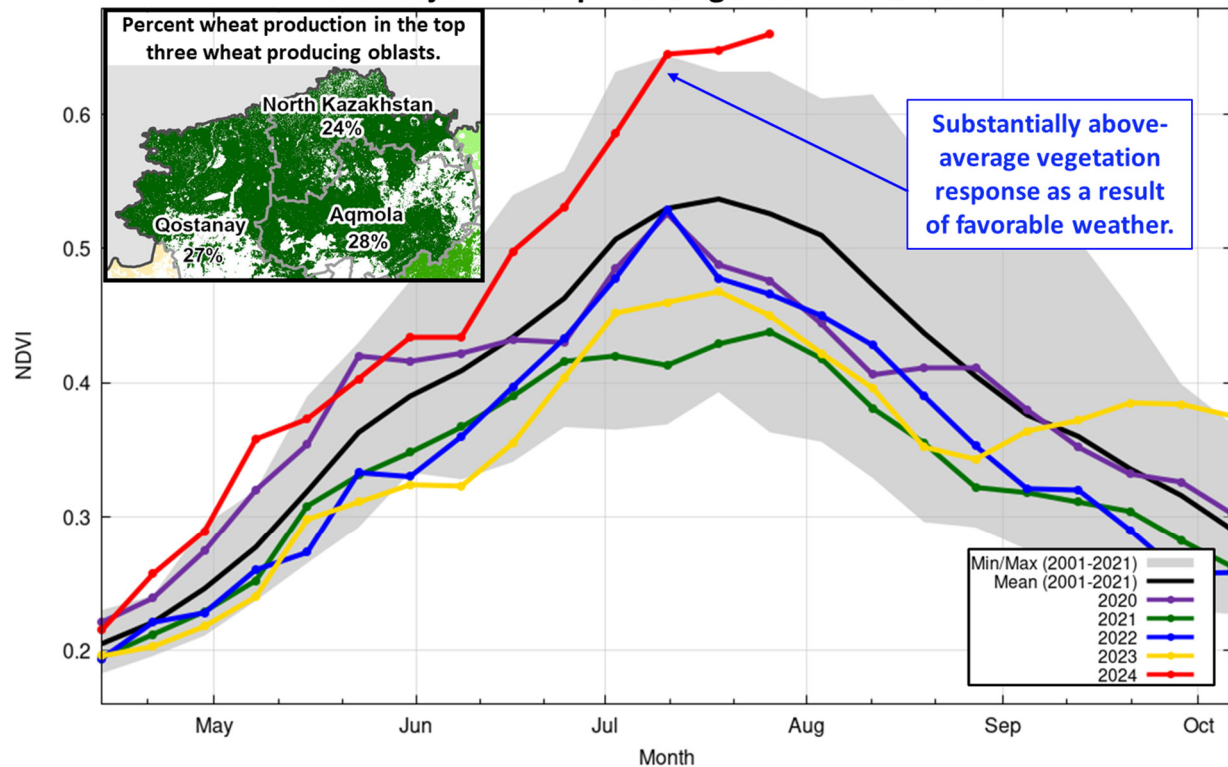
Pictures Courtesy of FAS/Bucharest

For country-specific area, yield, and production estimates within the European Union (EU), please go to PSD Online at <https://apps.fas.usda.gov/PSDOnline/app/index.html#/app/home>, and select “Downloadable Data Sets.” Select the zipped file for “EU Countries Area & Production.”
(For more information, contact Bryan.Purcell@usda.gov.)

Kazakhstan Wheat: Abundance of Moisture Drives Yield Up

Kazakhstan wheat production for marketing year 2024/25 is estimated at 16.0 million metric tons, up 10 percent from last month and 32 percent from last year. Total wheat yield is estimated at 1.23 tons per hectare, up 12 percent from last month and 33 percent from last year. Total harvested area is estimated at 13.0 million hectares, down 2 percent from last month and 1 percent from last year.

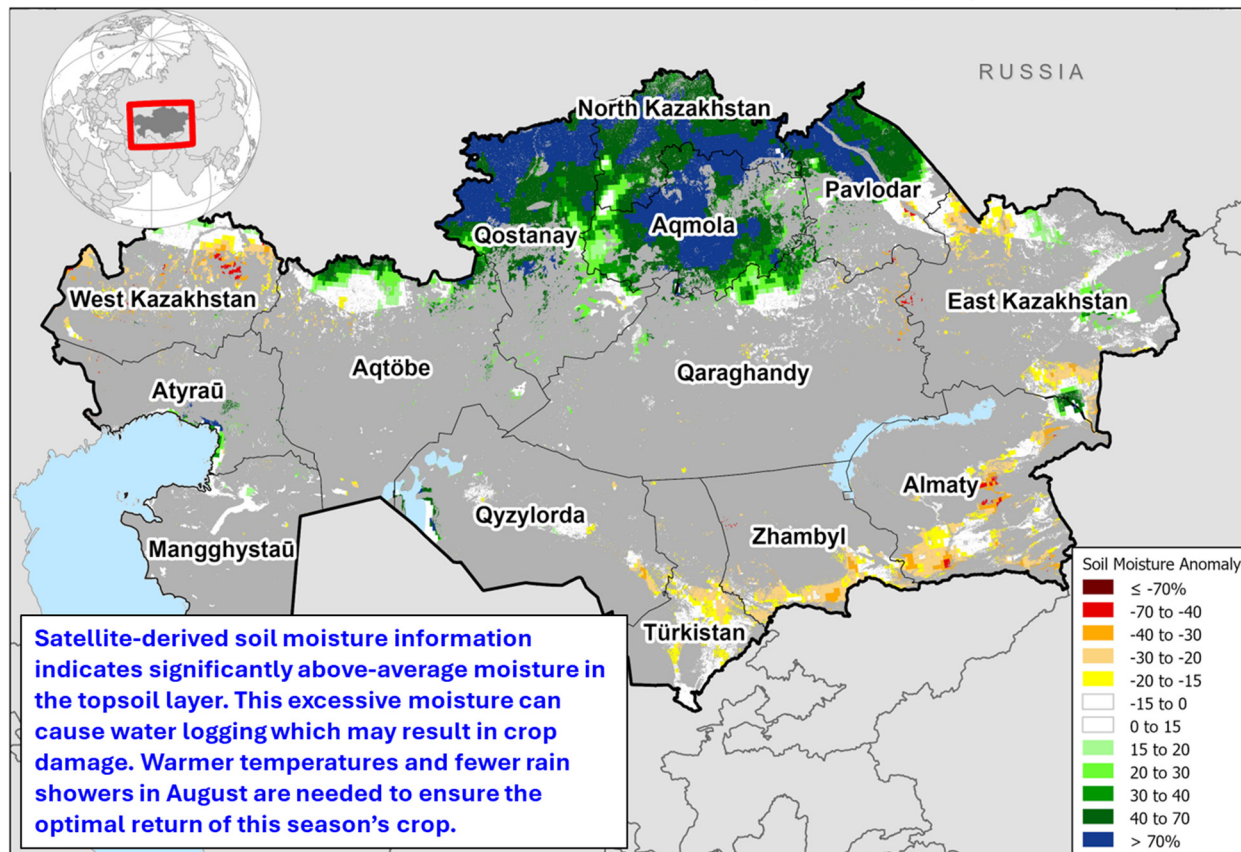
MODIS 8-day Normalized Difference Vegetation Index (NDVI) time series over the major wheat producing area in Kazakhstan



Source: NASA GIMMS; National Bureau of Statistics of the Republic of Kazakhstan (average production 2015-2019); GFSAD 30 m crop cover (2015)

The area change this month is based on the recently published planted area report by the National Bureau of Statistics of the Republic of Kazakhstan. The agency released its final 2024 planted area numbers for all major crops in early August of 2024. In addition, yield has been revised up month-to-month owing to favorable weather since the start of the growing season across the major northern grain producing oblasts of North Kazakhstan, Qostanay, and Aqmola. Abundant precipitation aided crop development, and as a result, this season's vegetation response is significantly above average. The satellite-derived Normalized Difference Vegetation Index (NDVI) suggests high yield potential.

Kazakhstan Surface Soil Moisture Anomaly 0 - 5 cm (August 4, 2024)

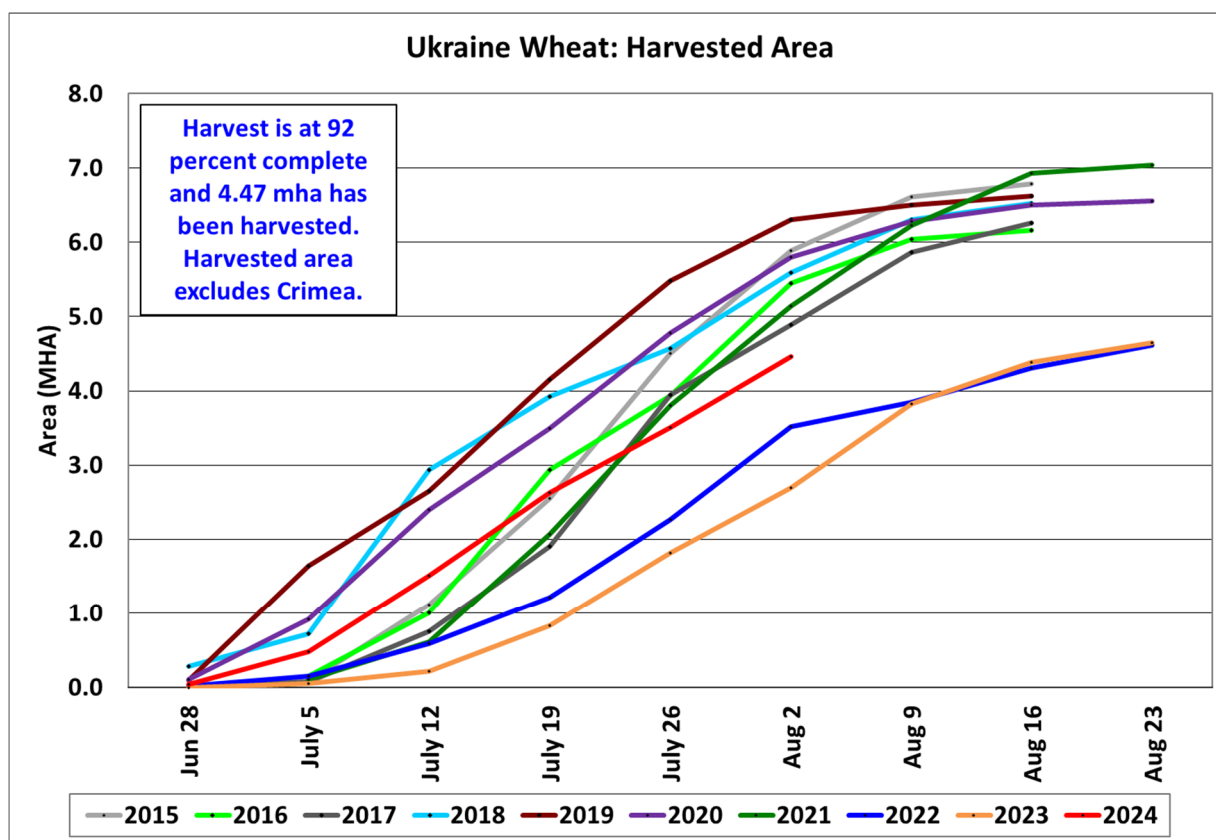


Source: NASA SMAP; GFSAD 30 m crop cover (2015).

Despite the favorable growing conditions, satellite-derived soil moisture information indicates significantly above-average moisture in the topsoil layer. This excessive moisture can cause water logging which may result in crop damage. The hydrometeorological service of the Republic of Kazakhstan reports that the condition of spring grain crops is generally good to satisfactory; however, drying of stems, yellowing of lower tier leaves, and death of plants have also been observed. Warmer temperatures and fewer rain showers in August are needed to ensure the optimal return of this season's crop. (For more information, please contact Iliana.Mladenova@usda.gov.)

Ukraine Wheat: Area Up Based on Official Data

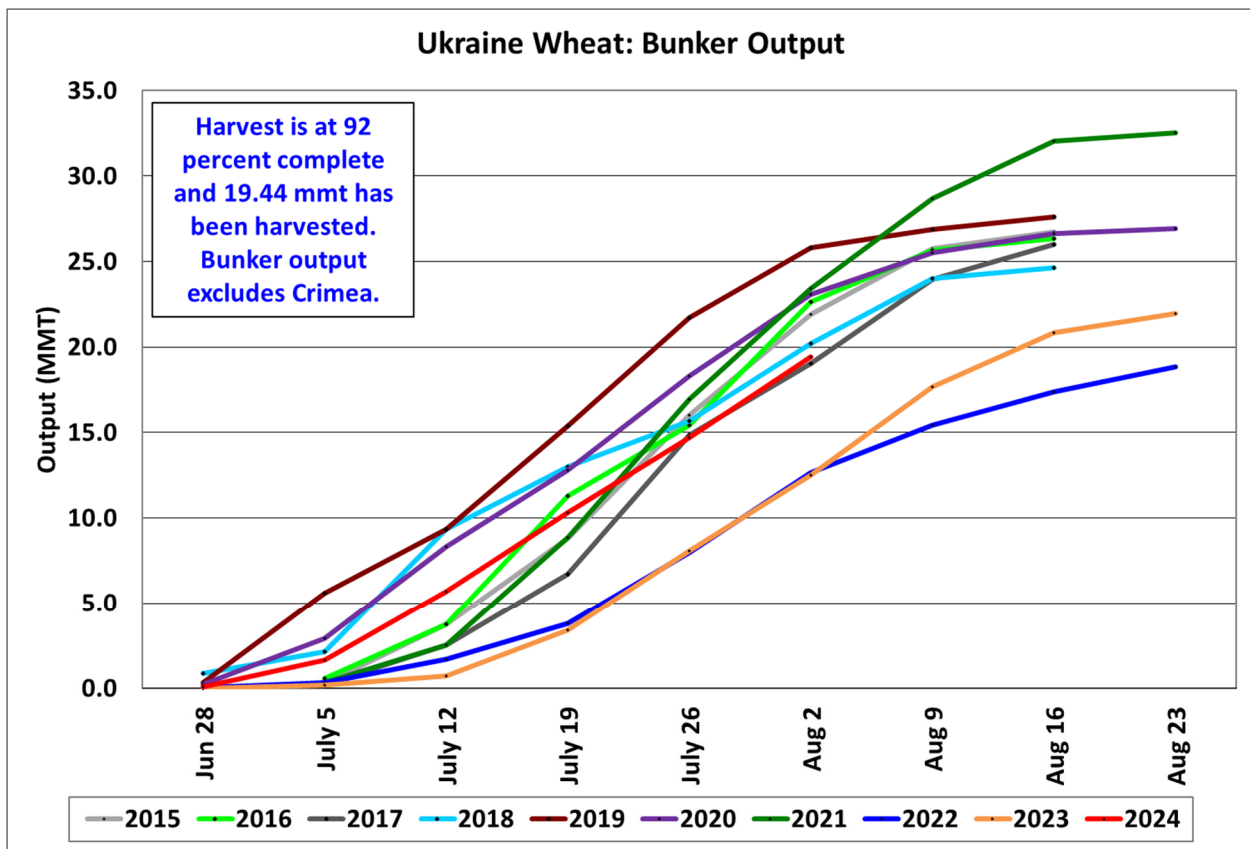
Ukraine wheat production for marketing year (MY) 2024/25 is forecast at 21.6 million metric tons (mmt), up 11 percent from last month, but down 6 percent from last year. Yield is forecast at 4.15 tons per hectare (t/ha), unchanged from last month and down 10 percent from last year. Harvested area is forecast at 5.2 million hectares (mha), up 11 percent from last month and 4 percent from last year.



Source: Ukraine Ministry of Agriculture

At present, Ukraine can be divided into two zones, areas in conflict and areas not in conflict. As elaborated by FAS/Kyiv in Ukraine, due to the ongoing war there is no official and reliable information about the status of Ukraine's agriculture in the conflict zone. As a result, area and production data currently provided by FAS/Kyiv, Ukraine's Ministry of Agriculture (MinAg) and the State Statistical Service of Ukraine, which inform USDA's forecasts, do not reflect the whole country. For the MY 2024/25 season the MinAg operational field data information for both the MY 2024/25 winter and spring crops excludes the temporarily occupied territory of the Donetsk, Zaporizhzhia, Luhansk and Kherson regions. This is based on a note included in the MinAg operational field reports. MinAg also does not include Crimea in the reports, but USDA crop production estimates for Ukraine do include estimated output from Crimea. Crimean area and production numbers are extracted from the agricultural crop reports provided by the Russian Statistical Agency, Rosstat.

The month-to-month increase in area is based on the final sown area data released by the State Statistical Service of Ukraine. According to MinAg, 92 percent of harvest is complete as of August 1, which is significantly ahead of last year's pace. Bunker output, which is the crop output prior to cleaning and drying, is also ahead of last year's crop during the same time at 19.5 mmt from an area of 4.5 mha (excluding Crimea). Bunker yield is currently at 4.35 t/ha. Assuming normal net-to-bunker conversion of 98 percent, which represents the 5-year pre-war average, net yield is currently about 4.26 t/ha excluding Crimea and 4.20 t/ha including Crimea.



Source: Ukraine Ministry of Agriculture

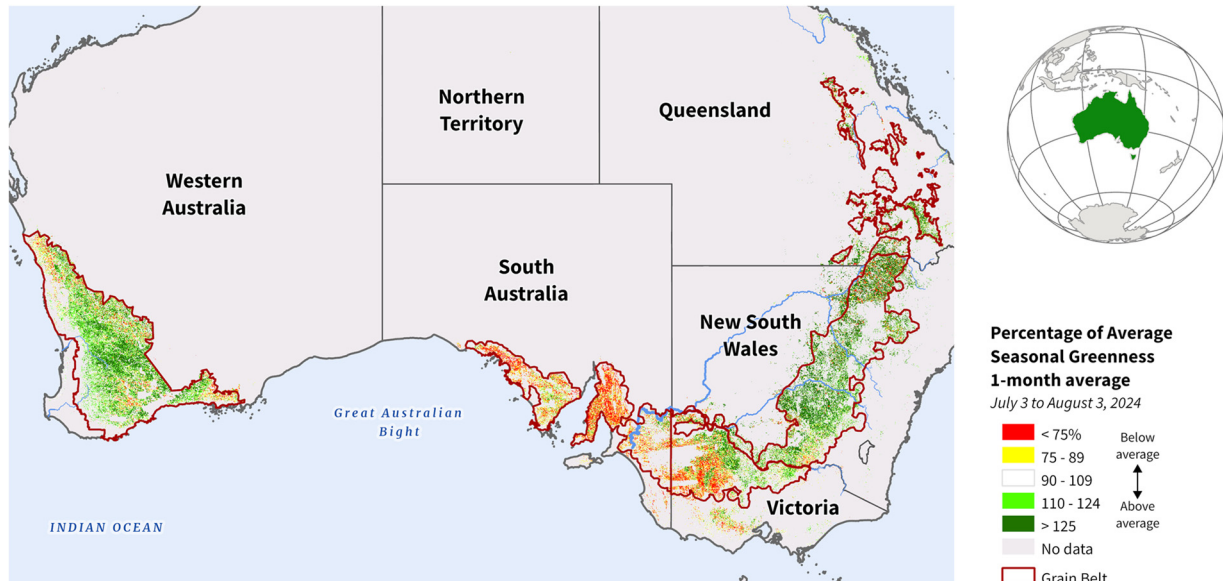
Winter wheat, which accounts for about 97 percent of the total wheat production in Ukraine, is typically planted between early September and mid-November. Harvest generally occurs from the end of June until mid-August. *(For more information, please contact Iliana.Mladenova@usda.gov.)*

Australia Wheat: Production Revised Higher

USDA forecasts Australia marketing year 2024/25 wheat production at 30.0 million metric tons (mmt), up 1.0 mmt or 3 percent from last month. Harvested area is forecast at 12.8 million hectares (mha), up 0.3 mha from last month, and last year. Yield is forecast at 2.34 tons per hectare, up 1 percent from last month, and up 13 percent from last year.

The production increase is primarily driven by two factors: a higher area forecast, aligning with official data from Australia, and marginally improved growing conditions due to recent precipitation in some wheat-producing areas.

Australia: Percent of Average Seasonal Greenness (1-Month)



Sources: NASA MODIS 1-month Percent of Average Seasonal Greenness (PASG), July 3 to August 3, 2024

However, despite this increase, recent rainfall has not yet fully alleviated concerns, as depicted in the satellite-derived 1-month Percent of Average Seasonal Greenness (PASG). The PASG shows that crop areas in South Australia and western Victoria are still struggling this season, highlighting the need for additional rainfall to ensure optimal growth and yields. Harvest will begin in November for the main wheat growing areas and continue into January. *(For more information, please contact James.Crutchfield@usda.gov.)*

European Union Wheat: Production Reduced on Area Revisions

Wheat production in the European Union (EU) for marketing year (MY) 2024/25 is estimated at 128.0 million metric tons (mmt), down 2.0 mmt from last month, 6.9 mmt below last year and 5 percent below the 5-year average. Harvested area is estimated at 23.1 million hectares (mha), down 250,000 hectares (ha) from last month, down 1.2 mha (5 percent) from last year, and down 4 percent from the 5-year average. Yield is estimated at 5.54 tons per hectare (t/ha), just slightly below last month and last year's estimates, and 1 percent below the 5-year average.

Wheat production this month has been reduced in the EU largely on the realization of less harvested area. Additionally, areas in western Europe are suffering from water-saturation. France, the EU's largest wheat producer, has struggled with excessive rainfall the entire season, somewhat similar to the dismal 2016 harvest. That season's yields were the lowest in decades due to rain and constant cloud cover, which obscured the sunlight for photosynthesis needed for grain development. This season, many French farmers were forced to switch from winter to spring crops as delays during autumn planting mounted, lowering wheat area. Other areas in western Europe also had to switch their cropping mix, such as Germany, the second largest EU-producer, and non-EU member the United Kingdom.

Excessive rain has continued to cause difficulties in most areas of the continent. In northern Italy, spring 2024 was the wettest since 2018, negatively affecting reproduction and delaying the harvest.

In Latvia, the heavy rains have caused lodging, sometimes significantly, as seen on crop travel by FAS/Washington and FAS/Warsaw during an unusually strong storm during late July. Meanwhile in southern Italy, drought initiated early senescence of durum wheat. Wheat development throughout Europe had been ahead of normal for much of the season due to above-average spring and summer temperatures; however, the remaining unharvested fields have been delayed as rain has prevented the final harvest of the crop, extending the season in the north and west, while lowering grain quality.



For country-specific area, yield, and production estimates within the EU, please go to PSD Online at <https://apps.fas.usda.gov/PSDOnline/app/index.html#/app/home>, and select “Downloadable Data Sets.” Select the zipped file for “EU Countries Area & Production.” *(For more information, please contact Bryan.Purcell@usda.gov.)*

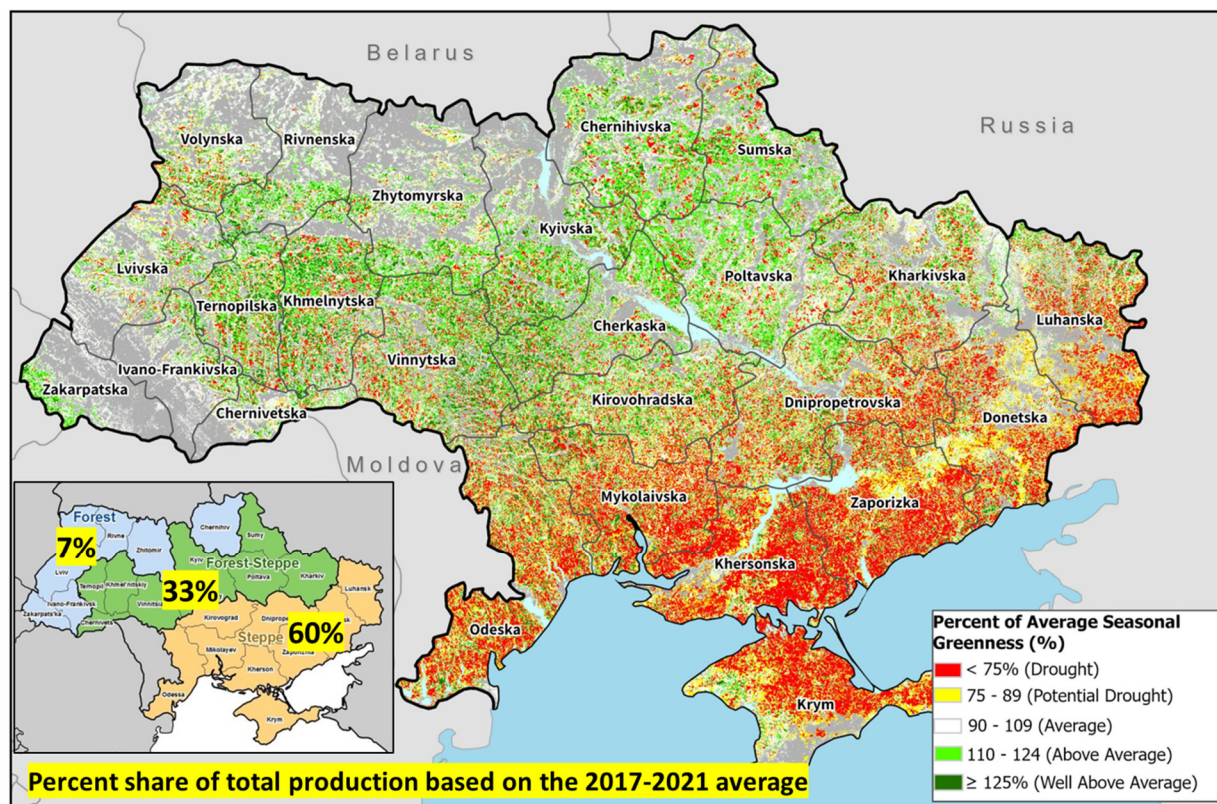
Ukraine Sunflower: Decrease in Expected Yield Due to Poor Weather

Ukraine sunflower production for marketing year (MY) 2024/25 is forecast at 13.5 million metric tons, down 7 percent from last month and 13 percent from last year. Yield is forecast at 2.18 tons per hectare, down 7 percent from last month and 10 percent from last year. Harvested area is forecast at 6.2 million hectares, unchanged from last month and down 3 percent from last year.

At present, Ukraine can be divided into two zones, areas in conflict and areas not in conflict. As elaborated by FAS/Kyiv in Ukraine, due to the ongoing war there is no official and reliable information about the status of Ukraine’s agriculture in the conflict zone. As a result, area and production data currently provided by FAS/Kyiv, Ukraine’s Ministry of Agriculture (MinAg) and the State Statistical Service of Ukraine, which inform USDA’s forecasts, do not reflect the whole country. For the MY 2024/25 season the MinAg operational field data information for both the

MY 2024/25 winter and spring crops excludes the temporarily occupied territory of the Donetsk, Zaporizhzhia, Luhansk and Kherson regions. MinAg also does not include Crimea in the reports, but USDA crop production estimates for Ukraine do include estimated output from Crimea. Crimean area and production numbers are extracted from the agricultural crop reports provided by the Russian Statistical Agency, Rosstat.

Ukraine Percent of Average Seasonal Greenness (June 25 - July 26, 2024)



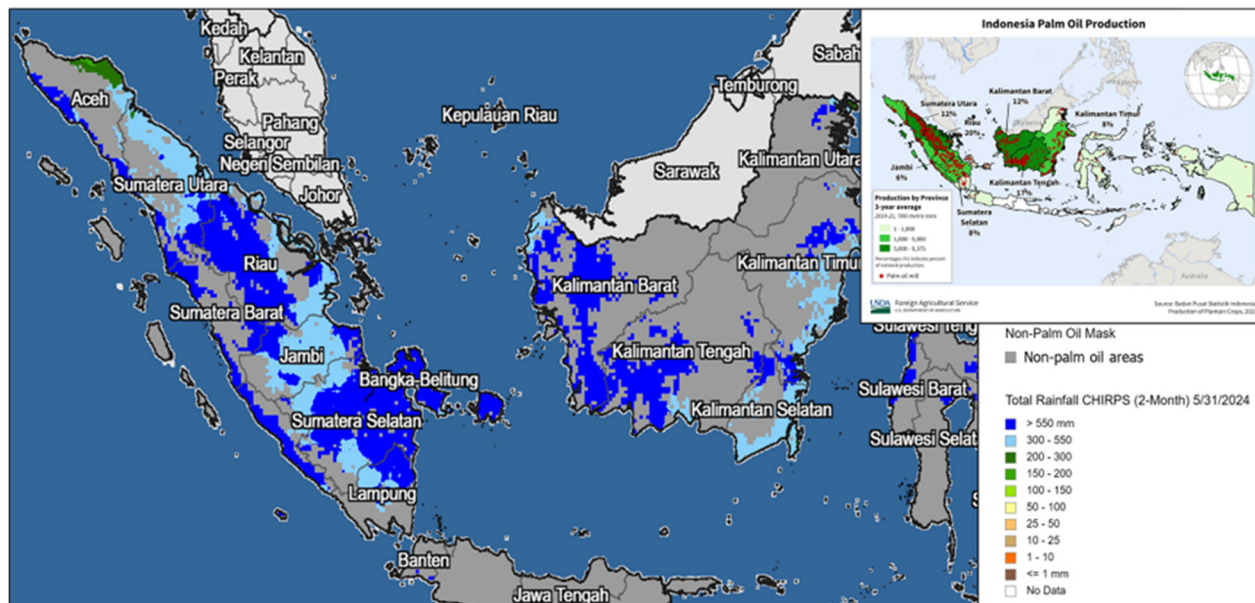
Sources: NASA GIMMS; GFSAD 30 m crop cover (2015)

This month's downward yield revision is prompted by continual unfavorable weather since the start of the season. Persistent below-average precipitation and excessive early to mid-July heat led to a wide-spread soil moisture deficit across all major crop growing regions in Ukraine. The impact of the sub-optimal growing conditions is captured by the satellite-derived Percent of Average Seasonal Greenness (PASG), which reveals significant crop stress and poor vegetation vigor across most of the major sunflower producing regions. The key yield formation stages for sunflower occur during the month of August. Harvest will begin in early September and continue until mid-November. (For more information, please contact Iliana.Mladenova@usda.gov.)

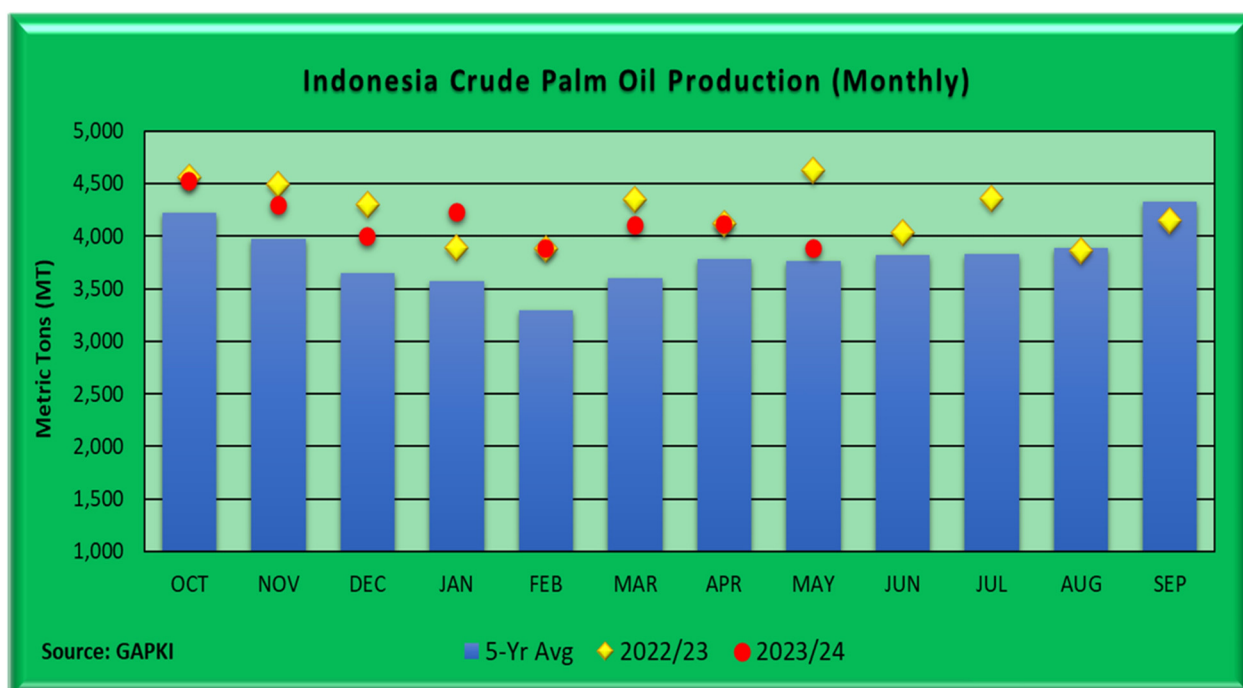
Indonesia Palm Oil: MY 2023/24 Estimated Production Lower than Expected Due to Adverse Weather

USDA estimates Indonesia palm oil production for marketing year (MY) 2023/24 at 46.5 million metric tons, down 1 percent from last month and matching production in MY 2022/23. The month-to-month harvested area estimate remains unchanged at 13.8 million hectares but is up 2 percent from MY 2022/23. Yield is estimated at 3.37 tons per hectare, down 1 percent from last month and 2 percent from MY 2022/23.

Palm Oil Area Impacted by Surplus Rainfall (April through May 2024)



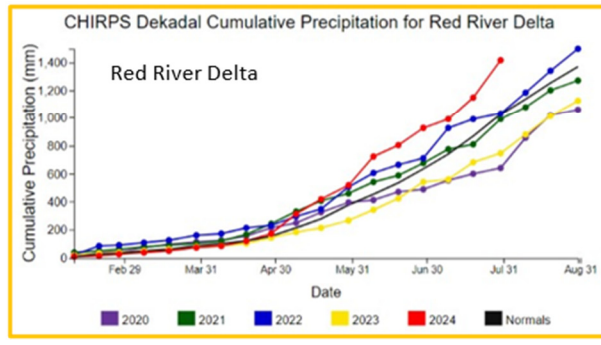
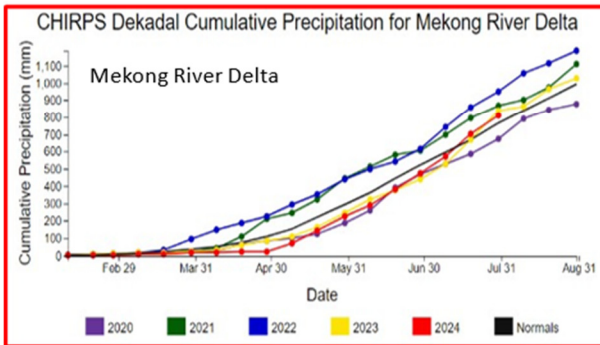
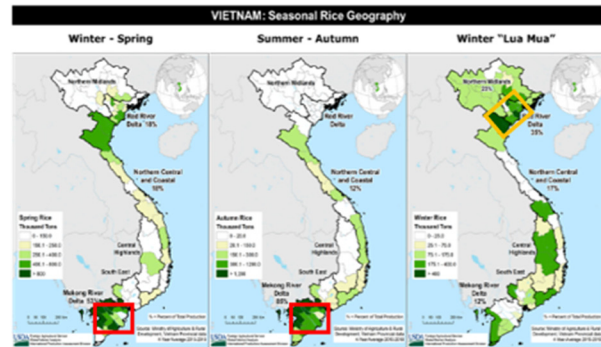
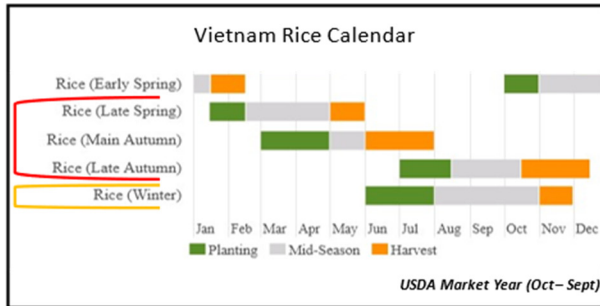
Wet weather from April through May has impacted harvest operations in Indonesia’s main palm producing islands of Sumatra and Kalimantan. Though farmers can harvest during the rain, one of the constraints when surplus rains occur is navigating equipment through the terrain. Additionally, surplus rainfall impedes the ability to efficiently use machinery as well as transport harvested palm fruit to the processing mills. Delays in the transportation process led to negative impacts on palm fruit yield.



Indonesia's Palm Oil Association (GAPKI) latest reports indicate that crude palm oil production output for the month of May was down 16 percent from MY 2022/23. USDA's marketing year for Indonesia palm oil is October through September. *(For more information, please contact Justin.Jenkins@usda.gov.)*

Vietnam Rice: MY 2023/24 Production Decreases Due to Adverse Weather During the Late Spring and Autumn Crop

USDA estimates marketing year (MY) 2023/24 rice production at 26.6 million metric tons (milled basis), down 1 percent from last month and 2 percent from MY 2022/23. Harvested area is estimated at 7.0 million hectares down 2 percent from last month and down 2 percent from MY 2022/23. Yield is estimated at 6.09 tons per hectare, up 1 percent from last month but slightly down from MY 2022/23.

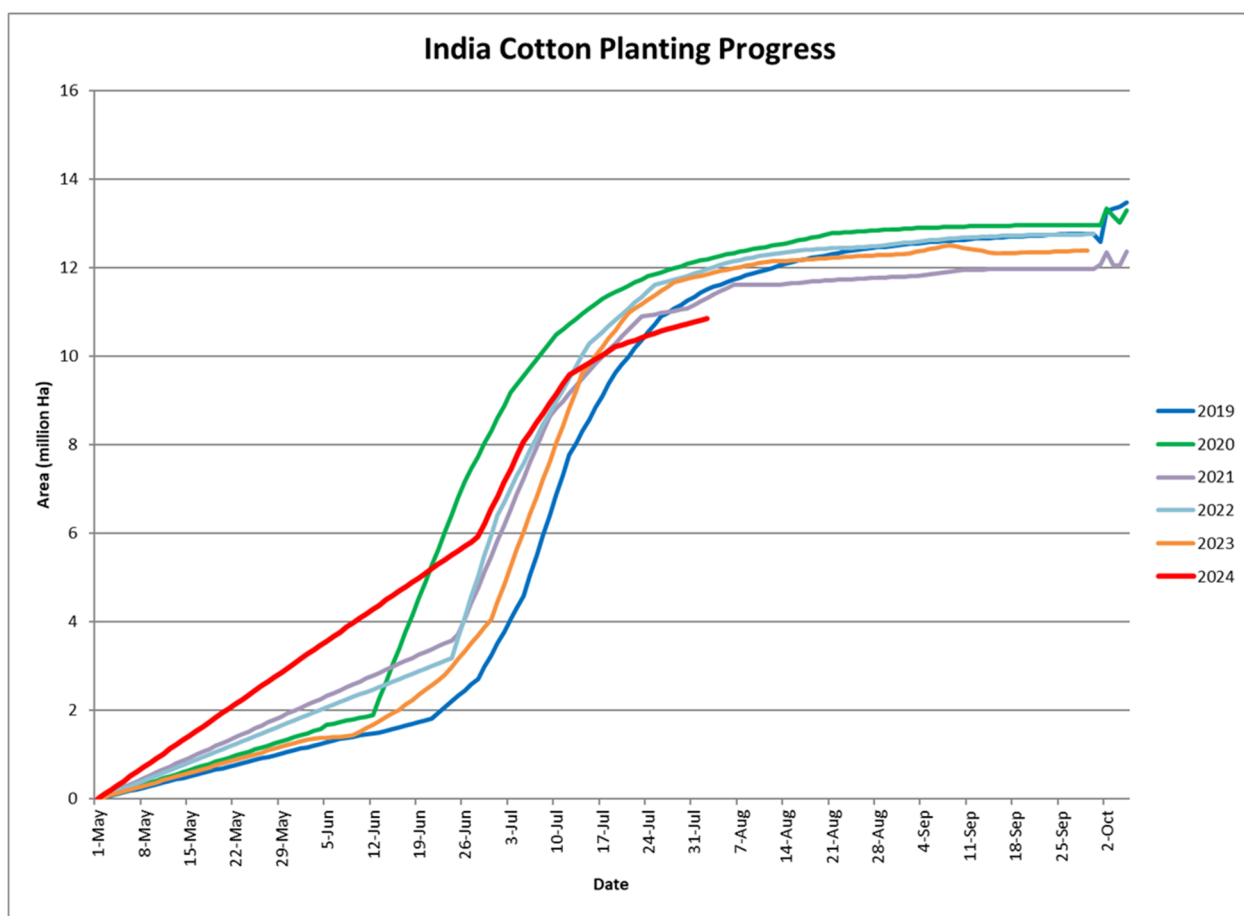


Since April 2024, rainfall distribution for the MY 2023/24 late spring and autumn planting cycles trended below average, which impacted rice yield potential, most notably in the Mekong River Delta. Planting for the winter or “Lua Mua” rice crop cycle began in June and the major production area is in the Red River Delta. The above-average rainfall has benefitted this crop. Harvest for the “Lua Mua” rice crop begins in November.

The year-to-year decrease in rice area is attributed to land-use conversion and has declined on an annual basis since MY 2016/17. Rice acreage reductions are due to a shift to higher profitable crops, an increase in residential development, and reoccurring issues with salinity intrusion as well as land erosion. *(For more information, please contact Justin.Jenkins@usda.gov.)*

India Cotton: Harvested Area Expected to Drop Six Percent from Last Year

USDA forecasts the marketing year (MY) 2024/25 cotton production for India at 24.5 million 480-pound bales, down 2 percent from last month and 6 percent from last year. The harvested area is forecasted at 12.0 million hectares, down 3 percent from last month and 6 percent from last year. Yields are forecasted to reach 445 kilograms per hectare, up 1 percent from last month and down 1 percent from last year.



Source: India's Department of Agriculture and Farmers Welfare, <https://agriwelfare.gov.in>

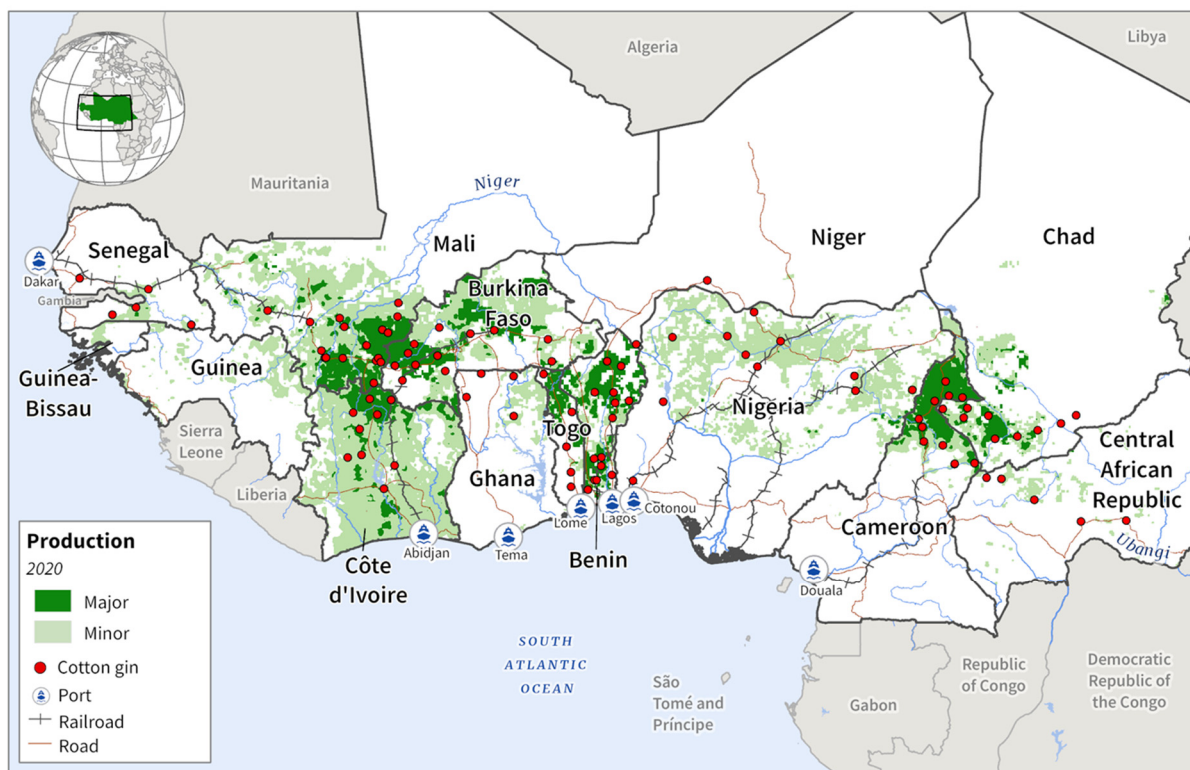
The 6 percent drop in area is due to farmers switching to more profitable crops such as soybeans or peanuts. There are reports of farmers holding back harvested cotton from MY 2023/24 in anticipation of higher prices despite an increase in minimum support prices (MSP). Planting is down in Gujarat, Maharashtra, and Telangana in the central cotton belt. At the beginning of the season, the northern cotton areas, which comprise around 15 percent of total production, experienced pre-monsoonal heat as high as 47 degrees Celsius, which hindered sowing. Consequently, planting is estimated to be down as much as 35 percent in the north. The Crop Situation Report published by India's Department of Agriculture and Farmers Welfare on August 6, 2024, reported sowed area at 10.8 million hectares, down 8 percent from the same period last year.

The planting window in central India ends in late August. However, planting will continue in the south until September. Cotton is grown mainly in the *kharif* season from May to October. Harvesting will likely begin in September and can continue into February. (For more information, please contact Arnella.Trent@usda.gov.)

African Franc Zone Cotton: Production Prospects Similar to Last Year

USDA forecasts African Franc Zone cotton production for marketing year (MY) 2024/25 at 4.9 million 480-pound bales, down 4 percent from last month, and down 1 percent from last year's crop. Harvested area is forecast at 2.7 million hectares, down 4 percent from last month, and up 1 percent from last year. The forecast yield of 402 kilograms per hectare is down 2 percent from last year and up 1 percent from the 5-year average yield.

West Africa Cotton Production



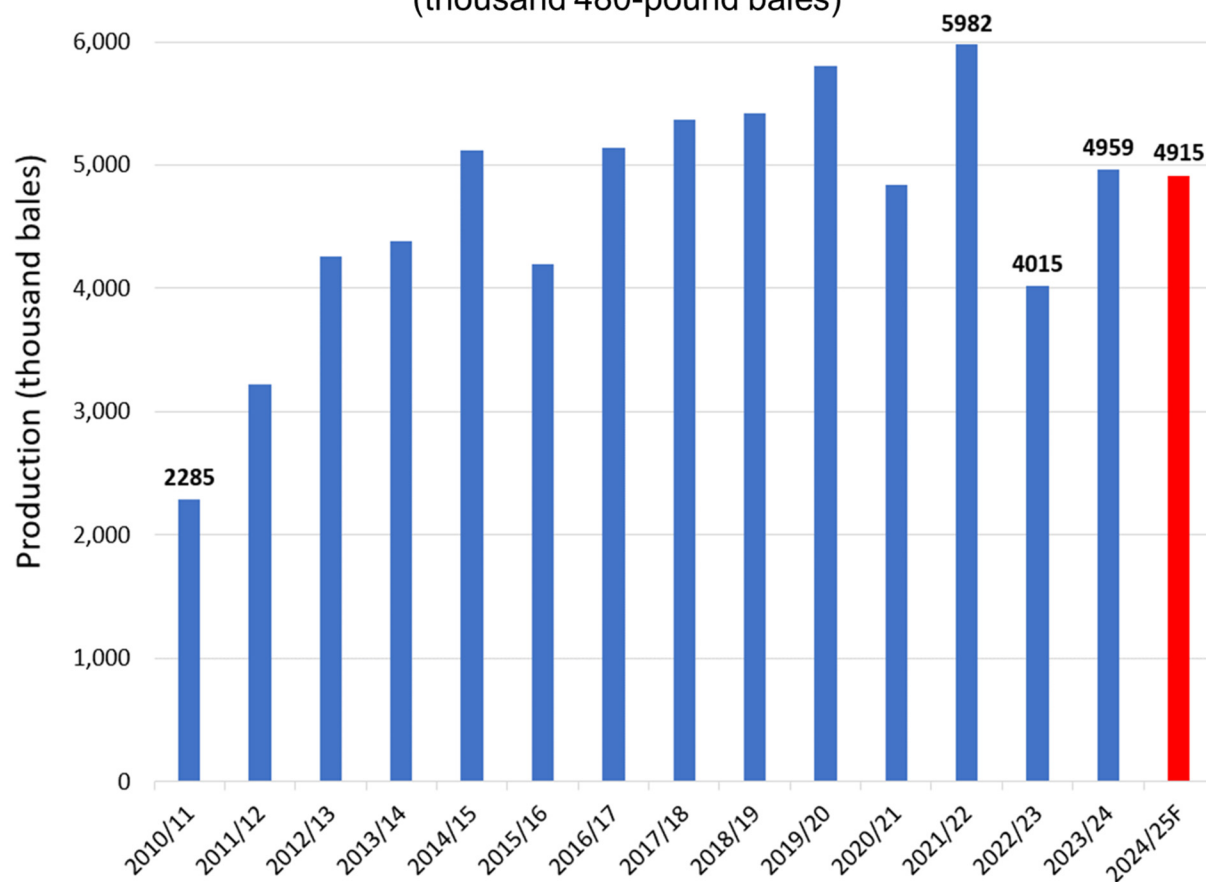
Cotton Production Source: International Food Policy Research Institute, Spatial Production Allocation Model (SPAM) 2020

African Franc Zone, as defined by WASDE, includes the following ten countries in order of MY 2024/25 production: Mali (1,350 thousand bales), Benin (1,045), Cote d'Ivoire (730), Burkina Faso (720), Cameroon (660), Chad (205), Togo (130), Central African Republic (36), Senegal (30), and Niger (9).

Cotton is sown from late May through mid-July for West Africa's Franc Zone region. As defined by USDA's monthly World Agricultural Supply and Demand Estimates (WASDE) publication, the African Franc Zone includes the following ten francophone countries in order of MY 2024/25 production: Mali (1,350 thousand bales), Benin (1,045), Cote d'Ivoire (730), Burkina Faso (720), Cameroon (660), Chad (205), Togo (130), Central African Republic (36), Senegal (30), and Niger (9).

African Franc Zone Lint Cotton Production

(thousand 480-pound bales)



Source: USDA PSD Online

Normally, the average planting progress in West Africa's Franc Zone region is approximately 70 percent complete in June, with the remaining 30 percent complete in July. However, seasonal rainfall was erratic in June which hampered planting progress, but July rains were average to above average and sufficient to complete planting activities by the end of the month. Cotton bolls are expected to open in early September, and the cotton harvest will range from October through December. *(For more information, please contact Curt.Reynolds@usda.gov.)*



**World Agricultural Production
U.S. Department of Agriculture**

Foreign Agricultural Service / Global Market Analysis
International Production Assessment Division (IPAD)
Ag Box 1051, Room 4630, South Building
Washington, DC 20250-1051

<https://ipad.fas.usda.gov/>

Telephone: (202) 720-1662 Fax: (202) 720-1158

This report uses information from the Foreign Agricultural Service's (FAS) global network of agricultural attachés and counselors, official statistics of foreign governments and other foreign source materials, and the analysis of economic data and satellite imagery. Estimates of foreign area, yield, and production are from the International Production Assessment Division, FAS, and are reviewed by USDA's Inter-Agency Commodity Estimates Committee. Estimates of U.S. area, yield, and production are from USDA's National Agricultural Statistics Service. Numbers within the report may not add to totals because of rounding. This report reflects official USDA estimates released in the World Agricultural Supply and Demand Estimates (WASDE-584), August 12, 2024.

Printed copies are available from the National Technical Information Service. Download an order form at http://www.ntis.gov/products/specialty/usda/fas_a-g.asp, or call NTIS at 1-800-363-2068.

The FAS International Production Assessment Division prepared this report. The next issue of World Agricultural Production will be released after 12:00 p.m. Eastern Time, September 12, 2024.

Conversion Table

Metric tons to bushels

Wheat, soybeans	=	MT * 36.7437
Corn, sorghum, rye	=	MT * 39.36825
Barley	=	MT * 45.929625
Oats	=	MT * 68.894438

Metric tons to 480-lb bales

Cotton	=	MT * 4.592917
--------	---	---------------

Metric tons to hundredweight

Rice	=	MT * 22.04622
------	---	---------------

Area & weight

1 hectare	=	2.471044 acres
1 kilogram	=	2.204622 pounds



For further information, contact:
U.S. Department of Agriculture
Foreign Agricultural Service
Global Market Analysis
International Production Assessment Division
Ag Box 1051, Room 4630, South Building
Washington, DC 20250-1051

Telephone: (202) 720-1662

Fax: (202) 720-1158

GENERAL INFORMATION

Senior Director	Ronald Frantz	202-720-4056	ronald.frantz@usda.gov
Director	Robert Tetrault	202-720-1071	robert.tetrault@usda.gov
USDA Remote Sensing Advisor	Vacant		
Sr. Analyst/Technical Lead	Curt Reynolds, Ph.D.	202-690-0134	curt.reynolds@usda.gov
Sr. Analyst/ Satellite Imagery	Dath Mita, Ph.D.	202-720-7339	dath.mita@usda.gov
Archives Manager/Technical Lead			
Sr. Analyst/Technical Lead	Jim Crutchfield	202-690-0135	james.crutchfield@usda.gov
GIS Mapping/Imagery Analyst	Lisa Colson	202-720-6652	lisa.colson@usda.gov
WAP Coordinators	Shannon Moyo	771-221-5973	shannon.moyo@usda.gov
	Vacant		

ANALYSIS REGIONS

ANALYST

CONTACT INFORMATION

Brazil	Aaron Mulhollen	202-690-0131	aaron.mulhollen@usda.gov
South America (except Brazil)	Katie McGaughey	202-720-9210	katie.mcgaughey@usda.gov
Europe, North Africa, and Middle East	Bryan Purcell	202-690-0138	bryan.purcell@usda.gov
India and South Asia	Arnella Trent	202-720-0881	arnella.trent@usda.gov
China and East Asia	Dath Mita, Ph.D.	202-720-7339	dath.mita@usda.gov
South Africa and Sub-Saharan Africa	Curt Reynolds, Ph.D.	202-690-0134	curt.reynolds@usda.gov
Indonesia and South East Asia	Justin Jenkins	202-720-0419	justin.jenkins@usda.gov
Mexico and Central America	Lisa Colson	202-720-6652	lisa.colson@usda.gov
Australia, Pakistan, and Central Asia	Jim Crutchfield	202-690-0135	james.crutchfield@usda.gov
Canada and the Caribbean	Shannon Moyo	771-221-5973	shannon.moyo@usda.gov
Russia, Ukraine, Kazakhstan, Moldova, and Belarus	Iliana Mladenova, Ph.D.	202-690-2315	iliana.mladenova@usda.gov



The Foreign Agricultural Service (FAS) updates its production, supply and distribution (PSD) database for cotton, oilseeds, and grains at 12:00 p.m. on the day the *World Agricultural Supply and Demand Estimates* (WASDE) report is released. This circular is released by 12:15 p.m.

FAS Reports and Databases:

World Agricultural Production

Current: <https://www.fas.usda.gov/data/world-agricultural-production>

Archive: <https://usda.library.cornell.edu/concern/publications/5q47rn72z?locale=en>

USDA's Foreign Agricultural Service (FAS) publishes a monthly report on crop acreage, yield and production in major countries worldwide. Sources include reporting from FAS's worldwide offices, official statistics of foreign governments, and analysis of economic data and satellite imagery. The reports reflect official USDA estimates released in the monthly *World Agricultural Supply and Demand Estimates* (WASDE).

World Markets and Trade

Current: <https://www.fas.usda.gov/data>

Archive:

https://usda.library.cornell.edu/catalog?f%5Bmember_of_collections_ssim%5D%5B%5D=Foreign+Agricultural+Service&locale=en

USDA's Foreign Agricultural Service (FAS) publishes monthly and quarterly reports which include data on U.S. and global trade, production, consumption and stocks, as well as analysis of developments affecting world trade in oilseeds, grains, cotton, livestock and poultry. The reports reflect official USDA estimates released in the monthly *World Agricultural Supply and Demand Estimates* (WASDE).

Global Agricultural Information Network (GAIN)

<https://gain.fas.usda.gov/>

USDA's Foreign Agricultural Service (FAS) provides timely reports on foreign markets through the Global Agriculture Information Network (GAIN) database. An average of 2,000 reports are added each year, with reports going back to 1995. GAIN reports are compiled by FAS' global market intelligence network, which includes FAS foreign service officers and locally engaged staff in over 90 overseas offices world-wide. They provide on-the-ground intelligence, insight, and analysis on nearly 200 countries, delivering information on foreign agricultural markets, crop conditions, and agro-political dynamics of interest to U.S. agriculture. GAIN reports contain assessments of commodity and trade issues made by USDA staff and are not necessarily statements of official U.S. government policy.

Production, Supply and Distribution (PS&D) Online

<https://apps.fas.usda.gov/psdonline/app/index.html#/app/home>

PSD Online is the public repository for USDA's Official Production, Supply and Distribution forecast data and reports for key agricultural commodities. PSD Online data are reviewed and updated monthly by an interagency committee chaired by USDA's World Agricultural Outlook Board (WAOB). The committee consist of representatives from Foreign Agricultural Service (FAS), the Economic Research Service (ERS), the Farm Service Agency (FSA), and the Agricultural Marketing Service (AMS).

EU Countries and Russia Wheat: Area and Production Estimates

<https://apps.fas.usda.gov/psdonline/app/index.html#/app/downloads> (click on PSD Datasets)

USDA's Foreign Agricultural Service (FAS) provides country-level area and production estimates for the nations of the European Union. For Russia, country-level area and production estimates are provided for Winter and Spring wheat. These datasets are reviewed and updated monthly by an interagency committee chaired by USDA's World Agricultural Outlook Board (WAOB) and can be downloaded through PSD datasets on PSD Online.



FAS Reports and Databases:

International Production Assessment (IPAD)

<https://ipad.fas.usda.gov/>

USDA's Foreign Agricultural Service (FAS) maintains a dynamic global crop production portal with key information including *World Agricultural Production* (WAP) briefs, Commodity Intelligence Reports (CIR), geospatial applications, crop production maps at a subnational level and crop calendars for the top-20 producing countries. Additionally, Crop Explorer (<https://ipad.fas.usda.gov/cropexplorer/>) displays rainfall, temperature, evapotranspiration, soil moisture, snow cover, and vegetation conditions in charts and maps.

USDA and NASA Global Agricultural Monitoring (GLAM)

<https://glam1.gsfc.nasa.gov/>

The USDA and NASA Global Agricultural Monitoring (GLAM) system provides near real-time and science quality Moderate Resolution Imaging Spectroradiometer (MODIS) Normalized Difference Vegetation Index (NDVI) from the satellites Terra and Aqua. The public can view and retrieve MODIS 8-day composited, global NDVI satellite imagery and time series data. GLAM was developed by NASA's Global Inventory Modeling and Mapping Studies (GIMMS) group for USDA's Foreign Agricultural Service.

Global Agricultural and Disaster Assessment System (GADAS)

<https://geo.fas.usda.gov/GADAS/index.html>

USDA's Foreign Agricultural Service (FAS) provides the Global Agricultural and Disaster Assessment System (GADAS), a web-based Geographic Information System (GIS) tool which integrates a vast array of highly detailed earth observation data streams, particularly targeted towards agricultural and disaster assessment analysis. GADAS is an interactive website which provides analysts with a wide variety of routine geospatial products (maps, charts, tables) they require for comprehensive situational investigations and recurring assessments.

Export Sales Reporting

<https://apps.fas.usda.gov/esrquery/>

USDA's Export Sales Reporting Program monitors U.S. agricultural export sales on a daily and weekly basis. Export sales reporting provides a constant stream of up-to-date market information for 40 U.S. agricultural commodities sold abroad. The weekly U.S. Export Sales report is the most currently available source of U.S. exports sales data. The data is used to analyze overall levels of export demand, determine where markets exit, and assess the relative position of U.S. commodities in foreign markets.

Global Agricultural Trade System (GATS)

<https://apps.fas.usda.gov/gats/default.aspx>

The Global Agricultural Trade System (GATS) is a searchable database containing monthly U.S. Census Bureau trade data organized by agricultural commodity and agricultural related product groups. Trade data is searchable by partner countries and partner groups. Historical U.S. agricultural trade data is available back to 1967. In addition, U.N. trade statistics (UN Comtrade) may be queried through GATS. UN trade data is available for nearly 200 countries or areas, dating from the inception of the Harmonized System (HS) of trade codes in 1989 to present. The database is continuously updated. U.S. trade data is updated monthly according to the U.S. Census Bureau's reporting system. UN Comtrade data are updated in GATS after nationally submitted data to the UN are standardized by the UN Statistical Division and added to the UN Comtrade database.

Other USDA Reports:

World Agricultural Supply and Demand Estimates (WASDE):

<http://www.usda.gov/oce/commodity/wasde/>

Economic Research Service:

<http://www.ers.usda.gov/topics/crops>

National Agricultural Statistics Service:

<http://www.nass.usda.gov/Publications/>

Table 01 World Crop Production Summary

Million Metric Tons

Commodity	World -	Total Foreign	North America			Former Soviet		Europea n	Asia (WAP)					South America		Selected Other			All Others
			United States	Canada -	Mexico -	Russia -	Ukraine -		China -	India -	Indo-nesia	Paki- stan	Thai- land	Argen- tina	Brazil -	Aus- tralia	South Africa	Turkey -	
---Million metric tons---																			
Wheat																			
2022/23	789.0	744.1	44.9	34.3	3.6	92.0	21.5	nr	137.7	104.0	0.0	26.2	0.0	12.6	10.6	40.5	2.1	17.3	241.7
2023/24 prel.	789.7	740.4	49.3	32.0	3.5	91.5	23.0	nr	136.6	110.6	0.0	28.2	0.0	15.9	8.1	26.0	2.1	21.0	242.1
2024/25 proj.																			
Jul	796.2	741.5	54.7	35.0	2.8	83.0	19.5	nr	140.0	114.0	0.0	31.4	0.0	18.0	9.5	29.0	2.1	19.0	238.2
Aug	798.3	744.3	53.9	35.0	2.8	83.0	21.6	nr	140.0	114.0	0.0	31.4	0.0	18.0	9.5	30.0	2.1	19.0	237.9
Coarse Grains																			
2022/23	1,451.7	1,095.3	356.4	30.5	33.9	44.1	33.9	nr	285.7	56.8	12.4	11.5	5.3	42.9	143.5	18.8	17.5	14.8	343.6
2023/24 prel.	1,498.5	1,095.6	402.9	27.2	27.8	42.5	39.8	nr	297.1	56.0	12.7	10.4	5.4	58.3	128.5	14.5	14.5	17.0	343.7
2024/25 proj.																			
Jul	1,512.4	1,114.9	397.5	27.1	30.4	39.2	33.5	nr	300.3	56.0	13.2	10.0	5.5	59.5	133.8	15.4	17.5	15.1	358.5
Aug	1,504.3	1,107.9	396.4	27.1	30.4	37.4	33.3	nr	300.3	56.9	13.2	10.0	5.5	59.5	133.8	15.4	17.5	15.1	352.6
Rice, Milled																			
2022/23	516.0	510.9	5.1	0.0	0.1	0.6	0.0	nr	145.9	135.8	33.9	7.3	20.9	0.8	6.8	0.4	0.0	0.6	157.8
2023/24 prel.	520.4	513.5	6.9	0.0	0.2	0.7	0.0	nr	144.6	137.0	33.0	9.9	20.0	0.8	7.2	0.4	0.0	0.5	159.1
2024/25 proj.																			
Jul	528.2	521.1	7.0	0.0	0.2	0.7	0.0	nr	146.0	138.0	34.0	10.0	20.1	0.9	7.5	0.5	0.0	0.6	162.7
Aug	527.7	520.7	7.0	0.0	0.2	0.8	0.0	nr	146.0	138.0	34.0	10.0	20.1	0.9	7.5	0.5	0.0	0.6	162.2
Total Grains																			
2022/23	2,756.8	2,350.4	406.4	64.9	37.6	136.7	55.4	nr	569.4	296.5	46.3	45.0	26.2	56.2	160.9	59.8	19.6	32.7	743.1
2023/24 prel.	2,808.6	2,349.4	459.1	59.1	31.4	134.7	62.8	nr	578.4	303.6	45.7	48.4	25.4	75.0	143.9	41.0	16.6	38.6	744.9
2024/25 proj.																			
Jul	2,836.7	2,377.5	459.2	62.1	33.3	122.9	53.0	nr	586.3	308.0	47.2	51.4	25.6	78.4	150.8	44.8	19.6	34.6	759.4
Aug	2,830.3	2,373.0	457.3	62.1	33.3	121.2	54.9	nr	586.3	308.9	47.2	51.4	25.6	78.4	150.8	45.8	19.6	34.6	752.8
Oilseeds																			
2022/23	637.9	512.2	125.8	25.3	0.9	26.6	19.8	nr	67.9	42.3	15.0	2.7	1.0	31.5	166.9	9.8	3.8	4.0	94.7
2023/24 prel.	657.5	535.2	122.2	25.9	0.6	28.1	25.5	nr	69.1	41.7	14.8	3.7	1.0	55.0	158.8	7.0	2.8	3.1	98.2
2024/25 proj.																			
Jul	686.1	554.6	131.5	27.0	0.6	27.4	23.7	nr	67.8	43.1	15.1	3.3	1.0	56.8	175.7	6.8	3.9	3.5	99.0
Aug	690.5	555.5	135.0	27.0	0.6	28.4	24.0	nr	67.8	43.5	14.9	3.3	1.1	56.8	175.7	6.8	3.9	3.4	98.5
Cotton																			
2022/23	116.5	102.0	14.5	0.0	1.6	0.0	0.0	1.6	30.8	26.3	0.0	3.9	0.0	1.2	11.7	5.8	0.1	4.9	14.2
2023/24 prel.	113.6	101.5	12.1	0.0	0.9	0.0	0.0	1.1	27.4	26.2	0.0	6.7	0.0	1.5	14.6	5.0	0.1	3.2	15.0
2024/25 proj.																			
Jul	120.2	103.2	17.0	0.0	0.8	0.0	0.0	1.4	27.5	25.0	0.0	6.0	0.0	1.6	16.7	5.0	0.1	4.0	15.2
Aug	117.6	102.5	15.1	0.0	0.8	0.0	0.0	1.4	27.5	24.5	0.0	6.0	0.0	1.6	16.7	5.0	0.1	4.0	15.0

1/ Includes wheat, coarse grains, and rice (milled) shown above.

Table 02 Wheat Area, Yield, and Production

Country / Region	Area (Million hectares)				Yield (Metric tons per hectare)				Production (Million metric tons)				Change in Production			
	2022/23	Prel.	2024/25 Proj.		2022/23	Prel.	2024/25 Proj.		2022/23	Prel.	2024/25 Proj.		From last month		From last year	
		2023/24	Jul	Aug		2023/24	Jul	Aug		2023/24	Jul	Aug	MMT	Percent	MMT	Percent
World	219.58	222.88	222.12	222.03	3.59	3.54	3.58	3.60	789.01	789.67	796.19	798.28	2.09	0.26	8.61	1.09
United States	14.36	15.08	15.70	15.35	3.13	3.27	3.48	3.51	44.90	49.31	54.66	53.93	-0.73	-1.33	4.62	9.36
Total Foreign	205.22	207.80	206.43	206.68	3.63	3.56	3.59	3.60	744.12	740.36	741.53	744.35	2.82	0.38	3.99	0.54
European Union	24.40	24.31	23.35	23.10	5.50	5.55	5.57	5.54	134.29	134.87	130.00	128.00	-2.00	-1.54	-6.87	-5.09
United Kingdom	1.81	1.72	1.40	1.40	8.57	8.13	7.75	7.75	15.54	13.98	10.85	10.85	0.00	0.00	-3.13	-22.39
Serbia	0.62	0.73	0.63	0.63	5.32	4.69	4.80	4.80	3.30	3.40	3.00	3.00	0.00	0.00	-0.40	-11.76
China	23.52	23.63	23.70	23.70	5.86	5.78	5.91	5.91	137.72	136.59	140.00	140.00	0.00	0.00	3.41	2.50
South Asia																
India	30.46	31.40	31.30	31.30	3.41	3.52	3.64	3.64	104.00	110.55	114.00	114.00	0.00	0.00	3.45	3.12
Pakistan	8.98	9.03	9.63	9.63	2.92	3.12	3.26	3.26	26.21	28.16	31.40	31.40	0.00	0.00	3.24	11.50
Afghanistan	1.86	2.35	2.30	2.30	2.05	2.20	2.26	2.26	3.80	5.17	5.20	5.20	0.00	0.00	0.03	0.58
Nepal	0.72	0.72	0.72	0.72	2.98	2.90	2.90	2.90	2.15	2.09	2.09	2.09	0.00	0.00	0.00	0.00
Former Soviet Union - 12																
Russia	29.00	28.83	28.10	28.00	3.17	3.17	2.95	2.96	92.00	91.50	83.00	83.00	0.00	0.00	-8.50	-9.29
Russia Winter	16.30	15.27	15.60	15.80	4.17	4.19	3.78	3.64	68.00	64.00	59.00	57.50	-1.50	-2.54	-6.50	-10.16
Russia Spring	12.70	13.56	12.50	12.20	1.89	2.03	1.92	2.09	24.00	27.50	24.00	25.50	1.50	6.25	-2.00	-7.27
Ukraine	5.60	5.01	4.70	5.20	3.84	4.59	4.15	4.15	21.50	23.00	19.50	21.60	2.10	10.77	-1.40	-6.09
Kazakhstan	12.81	13.13	13.20	13.00	1.28	0.92	1.10	1.23	16.40	12.11	14.50	16.00	1.50	10.34	3.89	32.11
Uzbekistan	1.26	1.40	1.30	1.30	4.99	4.62	5.15	5.15	6.27	6.46	6.70	6.70	0.00	0.00	0.24	3.68
Belarus	0.68	0.68	0.69	0.69	3.48	3.38	3.80	3.80	2.35	2.30	2.60	2.60	0.00	0.00	0.30	13.04
Canada	10.08	10.68	10.60	10.60	3.41	2.99	3.30	3.30	34.34	31.95	35.00	35.00	0.00	0.00	3.05	9.53
South America																
Argentina	5.50	5.58	6.00	6.00	2.28	2.84	3.00	3.00	12.55	15.85	18.00	18.00	0.00	0.00	2.15	13.56
Brazil	3.09	3.47	3.50	3.50	3.42	2.33	2.71	2.71	10.55	8.10	9.50	9.50	0.00	0.00	1.40	17.28
Australia	13.05	12.50	12.50	12.80	3.11	2.08	2.32	2.34	40.55	26.00	29.00	30.00	1.00	3.45	4.00	15.38
Africa																
Egypt	1.45	1.35	1.40	1.40	6.55	6.57	6.57	6.57	9.50	8.87	9.20	9.20	0.00	0.00	0.33	3.72
Morocco	2.44	2.50	2.20	2.20	1.11	1.66	1.14	1.14	2.71	4.16	2.50	2.50	0.00	0.00	-1.66	-39.90
Algeria	1.80	1.80	1.80	1.80	2.00	1.50	1.67	1.67	3.60	2.70	3.00	3.00	0.00	0.00	0.30	11.11
Ethiopia	1.90	1.86	1.90	1.90	3.05	3.01	3.00	3.00	5.80	5.60	5.70	5.70	0.00	0.00	0.10	1.79
Middle East																
Turkey	6.80	7.20	7.25	7.25	2.54	2.92	2.62	2.62	17.25	21.00	19.00	19.00	0.00	0.00	-2.00	-9.52
Iran	6.20	6.20	6.20	6.20	2.13	2.26	2.34	2.34	13.20	14.00	14.50	14.50	0.00	0.00	0.50	3.57
Iraq	2.10	2.60	2.70	2.70	1.52	2.00	2.11	2.11	3.20	5.20	5.70	5.70	0.00	0.00	0.50	9.62
Syria	1.18	1.20	1.30	1.30	1.31	2.00	2.15	2.15	1.55	2.40	2.80	2.80	0.00	0.00	0.40	16.67
Mexico	0.60	0.56	0.48	0.48	6.06	6.21	5.83	5.83	3.61	3.48	2.80	2.80	0.00	0.00	-0.68	-19.45
Others	7.33	7.37	7.59	7.59	2.75	2.83	2.90	2.93	20.18	20.86	21.99	22.21	0.22	1.00	1.35	6.45

Table 03 Total Coarse Grain Area, Yield, and Production

Country / Region	Area (Million hectares)				Yield (Metric tons per hectare)				Production (Million metric tons)				Change in Production			
	Prel.		2024/25 Proj.		Prel.		2024/25 Proj.		Prel.		2024/25 Proj.		From last month		From last year	
	2022/23	2023/24	Jul	Aug	2022/23	2023/24	Jul	Aug	2022/23	2023/24	Jul	Aug	MMT	Percent	MMT	Percent
World	336.34	336.89	336.09	335.25	4.32	4.45	4.50	4.49	1,451.74	1,498.48	1,512.38	1,504.29	-8.09	-0.54	5.81	0.39
United States	35.18	38.99	37.27	36.89	10.13	10.33	10.67	10.75	356.45	402.89	397.53	396.38	-1.14	-0.29	-6.51	-1.61
Total Foreign	301.16	297.90	298.82	298.36	3.64	3.68	3.73	3.71	1,095.29	1,095.60	1,114.86	1,107.91	-6.95	-0.62	12.31	1.12
China	45.55	46.65	47.14	47.14	6.27	6.37	6.37	6.37	285.70	297.14	300.30	300.30	0.00	0.00	3.16	1.06
European Union	26.53	26.03	26.56	26.28	5.01	5.24	5.49	5.35	133.06	136.41	145.69	140.65	-5.04	-3.46	4.24	3.11
United Kingdom	1.37	1.38	1.47	1.47	6.33	5.87	5.92	5.92	8.67	8.08	8.73	8.73	0.00	0.00	0.65	8.01
South America																
Brazil	24.48	23.71	24.56	24.56	5.86	5.42	5.45	5.45	143.48	128.54	133.76	133.76	0.00	0.00	5.22	4.06
Argentina	9.21	9.27	8.76	8.76	4.66	6.29	6.79	6.79	42.91	58.33	59.49	59.49	0.00	0.00	1.16	1.99
Former Soviet Union - 12																
Russia	13.60	12.88	12.68	11.85	3.25	3.30	3.09	3.16	44.13	42.54	39.23	37.40	-1.83	-4.66	-5.14	-12.08
Ukraine	6.32	6.24	5.72	5.95	5.37	6.38	5.86	5.60	33.93	39.78	33.47	33.32	-0.15	-0.44	-6.46	-16.23
Kazakhstan	2.63	2.87	2.96	2.65	1.79	1.40	1.50	1.71	4.71	4.01	4.43	4.53	0.10	2.21	0.52	13.03
Belarus	1.03	1.05	1.12	1.12	3.11	3.09	3.21	3.21	3.20	3.23	3.58	3.58	0.00	0.00	0.35	10.84
Africa																
Nigeria	13.50	13.40	13.10	13.10	1.61	1.42	1.53	1.53	21.70	19.01	20.10	20.10	0.00	0.00	1.09	5.72
South Africa	3.13	3.20	3.34	3.35	5.61	4.54	5.25	5.23	17.53	14.51	17.53	17.53	0.00	0.00	3.02	20.83
Tanzania	5.30	5.50	5.50	5.50	1.36	1.40	1.51	1.51	7.23	7.73	8.33	8.33	0.00	0.00	0.60	7.77
Burkina Faso	4.09	4.20	4.20	4.20	1.16	1.10	1.13	1.13	4.73	4.63	4.75	4.75	0.00	0.00	0.12	2.64
Ethiopia	5.45	5.41	5.64	5.64	3.21	3.25	3.18	3.18	17.47	17.56	17.91	17.91	0.00	0.00	0.35	1.99
Egypt	1.10	1.12	1.14	1.14	7.52	7.19	7.43	7.43	8.28	8.07	8.48	8.48	0.00	0.00	0.41	5.08
Mali	5.20	4.80	4.90	4.90	1.38	1.43	1.43	1.43	7.15	6.86	7.00	7.00	0.00	0.00	0.14	2.07
India	23.90	25.23	24.30	25.00	2.38	2.22	2.30	2.28	56.78	56.01	56.00	56.90	0.90	1.61	0.89	1.58
Southeast Asia																
Indonesia	3.50	3.70	3.80	3.80	3.54	3.43	3.47	3.47	12.40	12.70	13.20	13.20	0.00	0.00	0.50	3.94
Philippines	2.54	2.49	2.60	2.60	3.28	3.25	3.27	3.27	8.32	8.10	8.50	8.50	0.00	0.00	0.40	4.94
Vietnam	0.89	0.87	0.85	0.85	4.99	5.00	5.06	5.06	4.42	4.35	4.30	4.30	0.00	0.00	-0.05	-1.15
Thailand	1.21	1.25	1.26	1.26	4.35	4.29	4.34	4.34	5.25	5.35	5.45	5.45	0.00	0.00	0.10	1.87
Mexico	8.64	7.65	8.05	8.05	3.92	3.64	3.77	3.77	33.88	27.82	30.36	30.36	0.00	0.00	2.55	9.15
Canada	5.74	5.24	4.99	4.99	5.32	5.19	5.43	5.43	30.54	27.16	27.12	27.12	0.00	0.00	-0.05	-0.18
Australia	5.69	5.63	5.86	5.86	3.31	2.58	2.62	2.62	18.84	14.54	15.37	15.37	0.00	0.00	0.83	5.67
Middle East																
Turkey	4.57	4.59	4.55	4.55	3.25	3.72	3.31	3.31	14.84	17.05	15.06	15.06	0.00	0.00	-1.99	-11.65
Iran	1.86	1.86	1.81	1.81	2.38	2.38	2.50	2.50	4.42	4.42	4.52	4.52	0.00	0.00	0.10	2.26
Others	74.16	71.71	71.99	72.00	1.64	1.70	1.70	1.68	121.74	121.68	122.21	121.28	-0.93	-0.76	-0.40	-0.33

World and Selected Countries and Regions; Coarse Grain includes: Barley, Corn, Millet, Mixed Grains, Oats, Rye and Sorghum

Table 04 Corn Area, Yield, and Production

Country / Region	Area (Million hectares)				Yield (Metric tons per hectare)				Production (Million metric tons)				Change in Production						
	2022/23	Prel.		2024/25 Proj.		2022/23	Prel.		2024/25 Proj.		2022/23	Prel.		2024/25 Proj.		From last month		From last year	
		2023/24	Jul	Aug	2023/24		Jul	Aug	2023/24	Jul		Aug	MMT	Percent	MMT	Percent			
World	200.68	203.22	201.74	201.57	5.78	6.02	6.07	6.05	1,159.74	1,223.81	1,224.79	1,219.82	-4.97	-0.41	-3.98	-0.33			
United States	31.85	35.01	33.77	33.47	10.89	11.13	11.36	11.49	346.74	389.69	383.56	384.74	1.18	0.31	-4.95	-1.27			
Total Foreign	168.83	168.21	167.98	168.10	4.82	4.96	5.01	4.97	813.00	834.11	841.23	835.08	-6.15	-0.73	0.97	0.12			
China	43.07	44.22	44.70	44.70	6.44	6.53	6.53	6.53	277.20	288.84	292.00	292.00	0.00	0.00	3.16	1.09			
South America																			
Brazil	22.40	21.50	22.30	22.30	6.12	5.67	5.70	5.70	137.00	122.00	127.00	127.00	0.00	0.00	5.00	4.10			
Argentina	6.75	7.00	6.40	6.40	5.33	7.14	7.97	7.97	36.00	50.00	51.00	51.00	0.00	0.00	1.00	2.00			
Bolivia	0.44	0.43	0.42	0.42	2.52	2.62	2.56	2.56	1.10	1.13	1.08	1.08	0.00	0.00	-0.05	-4.44			
European Union	8.80	8.22	8.65	8.60	5.95	7.47	7.40	7.03	52.33	61.45	64.00	60.50	-3.50	-5.47	-0.95	-1.55			
Africa																			
South Africa	2.95	3.00	3.15	3.15	5.81	4.67	5.40	5.40	17.10	14.00	17.00	17.00	0.00	0.00	3.00	21.43			
Nigeria	5.80	5.70	5.10	5.10	2.23	1.94	2.16	2.16	12.95	11.05	11.00	11.00	0.00	0.00	-0.05	-0.48			
Ethiopia	2.55	2.50	2.55	2.55	4.00	4.00	4.00	4.00	10.20	10.00	10.20	10.20	0.00	0.00	0.20	2.00			
Egypt	0.93	0.95	0.97	0.97	8.00	7.58	7.84	7.84	7.44	7.20	7.60	7.60	0.00	0.00	0.40	5.56			
Tanzania	4.00	4.20	4.20	4.20	1.48	1.52	1.67	1.67	5.90	6.40	7.00	7.00	0.00	0.00	0.60	9.38			
Malawi	1.82	1.79	1.50	1.50	2.05	1.96	1.33	1.33	3.72	3.51	2.00	2.00	0.00	0.00	-1.51	-43.02			
Zambia	1.12	1.42	0.69	0.69	2.43	2.30	2.20	2.20	2.71	3.26	1.51	1.51	0.00	0.00	-1.75	-53.72			
Kenya	2.16	2.00	2.00	2.00	1.43	1.85	1.85	1.85	3.09	3.70	3.70	3.70	0.00	0.00	0.00	0.00			
Uganda	1.10	1.10	1.10	1.10	2.55	2.55	2.55	2.55	2.80	2.80	2.80	2.80	0.00	0.00	0.00	0.00			
Zimbabwe	1.00	1.00	0.90	0.90	1.45	1.50	0.61	0.61	1.45	1.50	0.55	0.55	0.00	0.00	-0.95	-63.33			
Former Soviet Union - 12																			
Ukraine	4.05	4.20	3.90	4.10	6.67	7.74	7.10	6.63	27.00	32.50	27.70	27.20	-0.50	-1.81	-5.30	-16.31			
Russia	2.64	2.40	2.50	2.50	6.00	6.92	6.00	5.64	15.83	16.60	15.00	14.10	-0.90	-6.00	-2.50	-15.06			
South Asia																			
India	10.74	11.00	11.00	11.00	3.54	3.41	3.41	3.41	38.09	37.50	37.50	37.50	0.00	0.00	0.00	0.00			
Pakistan	1.72	1.64	1.50	1.50	6.39	6.00	6.33	6.33	10.99	9.85	9.50	9.50	0.00	0.00	-0.35	-3.52			
Nepal	0.97	0.97	0.97	0.97	2.82	2.82	2.82	2.82	2.72	2.72	2.72	2.72	0.00	0.00	0.00	0.00			
Southeast Asia																			
Indonesia	3.50	3.70	3.80	3.80	3.54	3.43	3.47	3.47	12.40	12.70	13.20	13.20	0.00	0.00	0.50	3.94			
Philippines	2.54	2.49	2.60	2.60	3.28	3.25	3.27	3.27	8.32	8.10	8.50	8.50	0.00	0.00	0.40	4.94			
Vietnam	0.89	0.87	0.85	0.85	4.99	5.00	5.06	5.06	4.42	4.35	4.30	4.30	0.00	0.00	-0.05	-1.15			
Thailand	1.18	1.22	1.23	1.23	4.41	4.34	4.39	4.39	5.20	5.30	5.40	5.40	0.00	0.00	0.10	1.89			
Mexico	6.89	6.10	6.40	6.40	4.07	3.72	3.91	3.91	28.08	22.70	25.00	25.00	0.00	0.00	2.30	10.13			
Canada	1.44	1.52	1.45	1.45	10.07	9.92	10.00	10.00	14.54	15.08	14.50	14.50	0.00	0.00	-0.58	-3.82			
Turkey	0.53	0.65	0.56	0.56	12.83	12.92	13.04	13.04	6.80	8.40	7.30	7.30	0.00	0.00	-1.10	-13.10			
Others	26.87	26.43	26.60	26.57	2.52	2.70	2.71	2.67	67.64	71.47	72.18	70.93	-1.25	-1.73	-0.54	-0.76			

World and Selected Countries and Regions

Table 05 Barley Area, Yield, and Production

Country / Region	Area (Million hectares)				Yield (Metric tons per hectare)				Production (Million metric tons)				Change in Production			
	Prel.		2024/25 Proj.		Prel.		2024/25 Proj.		Prel.		2024/25 Proj.		From last month		From last year	
	2022/23	2023/24	Jul	Aug	2022/23	2023/24	Jul	Aug	2022/23	2023/24	Jul	Aug	MMT	Percent	MMT	Percent
World	47.13	46.72	46.27	45.63	3.20	3.05	3.14	3.18	150.90	142.44	145.07	145.00	-0.07	-0.05	2.56	1.80
United States	0.98	1.03	0.82	0.76	3.86	3.90	3.99	4.25	3.79	4.03	3.26	3.24	-0.02	-0.52	-0.79	-19.58
Total Foreign	46.15	45.69	45.46	44.87	3.19	3.03	3.12	3.16	147.11	138.41	141.81	141.76	-0.05	-0.04	3.35	2.42
European Union	10.32	10.37	10.40	10.35	5.02	4.62	5.08	5.01	51.83	47.86	52.80	51.90	-0.90	-1.70	4.04	8.45
United Kingdom	1.12	1.14	1.20	1.20	6.62	6.12	6.25	6.25	7.39	6.96	7.50	7.50	0.00	0.00	0.54	7.71
Former Soviet Union - 12																
Russia	7.75	7.65	7.00	6.70	2.77	2.68	2.60	2.73	21.50	20.50	18.20	18.30	0.10	0.55	-2.20	-10.73
Ukraine	1.95	1.68	1.50	1.50	3.13	3.78	3.33	3.53	6.10	6.35	5.00	5.30	0.30	6.00	-1.05	-16.54
Kazakhstan	2.18	2.43	2.50	2.25	1.51	1.08	1.24	1.51	3.29	2.61	3.10	3.40	0.30	9.68	0.79	30.07
Belarus	0.40	0.40	0.40	0.40	2.75	2.75	3.00	3.00	1.10	1.10	1.20	1.20	0.00	0.00	0.10	9.09
Azerbaijan	0.39	0.36	0.36	0.36	2.85	2.99	3.06	3.06	1.10	1.07	1.10	1.10	0.00	0.00	0.03	3.09
Canada	2.64	2.70	2.36	2.36	3.79	3.30	3.64	3.64	9.99	8.90	8.60	8.60	0.00	0.00	-0.30	-3.33
Australia	4.13	4.20	4.40	4.40	3.43	2.57	2.61	2.61	14.14	10.80	11.50	11.50	0.00	0.00	0.70	6.48
Middle East																
Turkey	3.80	3.70	3.75	3.75	1.95	2.16	1.89	1.89	7.40	8.00	7.10	7.10	0.00	0.00	-0.90	-11.25
Iran	1.65	1.65	1.60	1.60	1.82	1.82	1.94	1.94	3.00	3.00	3.10	3.10	0.00	0.00	0.10	3.33
Iraq	0.21	0.16	1.00	1.00	1.12	1.29	1.40	1.40	0.24	0.20	1.40	1.40	0.00	0.00	1.20	600.00
Syria	1.12	1.10	1.10	1.10	0.16	0.45	1.09	1.09	0.18	0.50	1.20	1.20	0.00	0.00	0.70	140.00
Africa																
Ethiopia	0.98	0.98	0.98	0.98	2.22	2.50	2.54	2.54	2.18	2.45	2.49	2.49	0.00	0.00	0.04	1.43
Morocco	1.14	1.17	0.80	0.80	0.61	1.15	0.83	0.83	0.70	1.35	0.66	0.66	0.00	0.00	-0.69	-51.11
Algeria	1.03	1.03	1.03	1.03	1.37	1.00	1.17	1.17	1.40	1.03	1.20	1.20	0.00	0.00	0.18	17.07
Tunisia	0.30	0.11	0.35	0.35	1.53	0.82	1.57	1.57	0.46	0.09	0.55	0.55	0.00	0.00	0.46	517.98
South Africa	0.10	0.11	0.11	0.11	2.99	3.49	3.36	3.36	0.30	0.38	0.37	0.37	0.00	0.00	-0.01	-1.86
South America																
Argentina	1.59	1.30	1.25	1.25	2.95	3.92	3.76	3.76	4.70	5.10	4.70	4.70	0.00	0.00	-0.40	-7.84
Uruguay	0.21	0.18	0.19	0.19	4.25	3.89	4.21	4.21	0.90	0.70	0.80	0.80	0.00	0.00	0.10	14.29
Brazil	0.13	0.12	0.14	0.14	3.87	3.79	4.07	4.07	0.50	0.46	0.55	0.55	0.00	0.00	0.10	20.88
India	0.45	0.63	0.50	0.50	3.03	3.05	3.00	3.00	1.37	1.91	1.50	1.50	0.00	0.00	-0.41	-21.59
China	0.56	0.50	0.50	0.50	3.91	4.00	4.00	4.00	2.19	2.00	2.00	2.00	0.00	0.00	0.00	0.00
Mexico	0.30	0.29	0.29	0.29	2.69	2.69	2.69	2.69	0.80	0.78	0.78	0.78	0.00	0.00	0.00	0.00
Afghanistan	0.06	0.08	0.07	0.07	1.53	1.38	1.43	1.43	0.10	0.11	0.10	0.10	0.00	0.00	-0.01	-9.09
Others	1.67	1.68	1.69	1.70	2.57	2.51	2.56	2.63	4.28	4.22	4.32	4.47	0.15	3.48	0.25	5.88

World and Selected Countries and Regions

Table 06 Oats Area, Yield, and Production

Country / Region	Area (Million hectares)				Yield (Metric tons per hectare)				Production (Million metric tons)				Change in Production			
	2022/23	Prel.	2024/25 Proj.		2022/23	Prel.	2024/25 Proj.		2022/23	Prel.	2024/25 Proj.		From last month		From last year	
		2023/24	Jul	Aug		2023/24	Jul	Aug		2023/24	Jul	Aug	MMT	Percent	MMT	Percent
World	9.39	8.35	8.90	8.67	2.70	2.32	2.50	2.55	25.34	19.38	22.26	22.13	-0.14	-0.62	2.75	14.17
United States	0.36	0.34	0.35	0.36	2.35	2.46	2.54	2.70	0.84	0.83	0.90	0.98	0.08	9.24	0.15	18.48
Total Foreign	9.04	8.02	8.54	8.30	2.71	2.31	2.50	2.55	24.50	18.55	21.37	21.15	-0.22	-1.03	2.59	13.98
European Union	2.35	2.30	2.35	2.40	3.20	2.58	3.02	3.08	7.51	5.93	7.10	7.40	0.30	4.23	1.47	24.77
Former Soviet Union - 12																
Russia	2.13	1.77	2.00	1.70	2.11	1.86	1.90	1.91	4.50	3.30	3.80	3.25	-0.55	-14.47	-0.05	-1.52
Ukraine	0.15	0.17	0.15	0.17	2.47	2.53	2.33	2.35	0.38	0.43	0.35	0.40	0.05	14.29	-0.03	-6.98
Belarus	0.16	0.16	0.16	0.16	2.42	2.26	2.06	2.06	0.38	0.35	0.32	0.32	0.00	0.00	-0.03	-8.57
Kazakhstan	0.20	0.19	0.21	0.19	1.16	0.79	1.00	1.00	0.23	0.15	0.21	0.19	-0.02	-9.52	0.04	26.67
Canada	1.40	0.82	0.97	0.97	3.73	3.20	3.51	3.51	5.23	2.64	3.40	3.40	0.00	0.00	0.76	28.98
South America																
Argentina	0.26	0.28	0.30	0.30	1.67	2.03	2.00	2.00	0.43	0.57	0.60	0.60	0.00	0.00	0.04	6.19
Brazil	0.53	0.52	0.52	0.52	2.22	2.24	2.33	2.33	1.18	1.17	1.20	1.20	0.00	0.00	0.03	2.74
Chile	0.07	0.09	0.10	0.10	4.63	4.71	4.70	4.70	0.33	0.40	0.47	0.47	0.00	0.00	0.07	17.50
Uruguay	0.02	0.01	0.02	0.02	2.40	2.20	2.00	2.00	0.04	0.02	0.03	0.03	0.00	0.00	0.01	36.36
Oceania																
Australia	0.75	0.70	0.73	0.73	2.13	1.57	1.66	1.66	1.59	1.10	1.20	1.20	0.00	0.00	0.10	9.09
New Zealand	0.01	0.00	0.00	0.00	6.60	6.50	6.25	6.25	0.03	0.03	0.03	0.03	0.00	0.00	0.00	-3.85
China	0.41	0.41	0.41	0.41	1.48	1.48	1.48	1.48	0.60	0.60	0.60	0.60	0.00	0.00	0.00	0.00
Africa																
Algeria	0.08	0.08	0.08	0.08	1.31	1.31	1.31	1.31	0.11	0.11	0.11	0.11	0.00	0.00	0.00	0.00
Morocco	0.01	0.02	0.02	0.02	0.31	0.40	0.40	0.40	0.00	0.01	0.01	0.01	0.00	0.00	0.00	0.00
South Africa	0.03	0.03	0.02	0.03	1.04	1.46	1.50	1.00	0.03	0.04	0.03	0.03	0.00	0.00	-0.01	-26.83
Other Europe																
United Kingdom	0.18	0.17	0.20	0.20	5.72	4.97	5.00	5.00	1.01	0.83	1.00	1.00	0.00	0.00	0.17	20.48
Norway	0.06	0.07	0.07	0.07	4.62	4.29	4.29	4.29	0.29	0.30	0.30	0.30	0.00	0.00	0.00	0.00
Serbia	0.02	0.02	0.02	0.02	2.80	3.00	3.00	3.00	0.04	0.06	0.06	0.06	0.00	0.00	0.00	0.00
Albania	0.02	0.02	0.02	0.02	2.27	2.27	2.27	2.27	0.03	0.03	0.03	0.03	0.00	0.00	0.00	0.00
Bosnia and Herzegovina	0.01	0.01	0.01	0.01	4.00	3.43	3.43	3.43	0.04	0.02	0.02	0.02	0.00	0.00	0.00	0.00
Turkey	0.14	0.13	0.13	0.13	2.64	2.60	2.62	2.62	0.37	0.33	0.34	0.34	0.00	0.00	0.02	4.62
Mexico	0.05	0.03	0.04	0.04	2.22	2.20	2.00	2.00	0.11	0.06	0.08	0.08	0.00	0.00	0.03	45.45
Others	0.03	0.06	0.05	0.05	1.63	1.68	1.78	1.78	0.05	0.09	0.08	0.08	0.00	0.00	-0.01	-12.77

World and Selected Countries and Regions

Table 07 Rye Area, Yield, and Production

Country / Region	Area (Million hectares)				Yield (Metric tons per hectare)				Production (Million metric tons)				Change in Production						
	2022/23	Prel.		2024/25 Proj.		2022/23	Prel.		2024/25 Proj.		2022/23	Prel.		2024/25 Proj.		From last month		From last year	
		2023/24	Jul	Aug	2023/24		Jul	Aug	2023/24	Jul		Aug	MMT	Percent	MMT	Percent			
World	3.69	3.63	3.71	3.45	3.29	3.21	3.22	3.27	12.15	11.65	11.93	11.28	-0.64	-5.38	-0.37	-3.17			
United States	0.14	0.13	0.15	0.15	2.26	2.03	2.20	2.20	0.32	0.26	0.34	0.34	0.00	0.00	0.07	27.65			
Total Foreign	3.55	3.50	3.55	3.29	3.33	3.26	3.26	3.32	11.83	11.39	11.59	10.95	-0.64	-5.54	-0.44	-3.88			
European Union	1.77	1.88	1.80	1.80	4.26	4.06	4.28	4.22	7.55	7.63	7.70	7.60	-0.10	-1.30	-0.03	-0.43			
Former Soviet Union - 12																			
Russia	0.88	0.79	0.90	0.66	2.27	2.15	2.06	2.05	2.00	1.70	1.85	1.35	-0.50	-27.03	-0.35	-20.59			
Belarus	0.30	0.31	0.32	0.32	2.50	2.52	2.38	2.38	0.75	0.78	0.76	0.76	0.00	0.00	-0.02	-2.56			
Ukraine	0.10	0.08	0.08	0.07	3.15	3.00	2.88	2.86	0.32	0.24	0.23	0.20	-0.03	-13.04	-0.04	-16.67			
Kazakhstan	0.03	0.02	0.03	0.02	1.76	0.86	1.17	1.15	0.06	0.02	0.04	0.02	-0.01	-34.29	0.01	27.78			
Turkey	0.10	0.11	0.11	0.11	2.79	2.91	2.91	2.91	0.27	0.32	0.32	0.32	0.00	0.00	0.00	0.00			
Canada	0.15	0.12	0.11	0.11	3.42	3.09	3.14	3.14	0.52	0.36	0.35	0.35	0.00	0.00	-0.01	-3.63			
South America																			
Chile	0.00	0.00	0.00	0.00	5.00	0.00	0.00	0.00	0.01	0.00	0.00	0.00	0.00	100.00	0.00	100.00			
Argentina	0.11	0.09	0.11	0.11	1.66	1.83	1.76	1.76	0.18	0.17	0.19	0.19	0.00	0.00	0.02	12.12			
Other Europe																			
Bosnia and Herzegovina	0.00	0.00	0.00	0.00	3.00	3.00	3.00	3.00	0.01	0.01	0.01	0.01	0.00	0.00	0.00	-33.33			
Switzerland	0.00	0.00	0.00	0.00	5.00	5.00	5.00	5.00	0.01	0.01	0.01	0.01	0.00	0.00	0.00	0.00			
Serbia	0.01	0.01	0.01	0.01	3.00	3.33	3.00	3.00	0.02	0.02	0.02	0.02	0.00	0.00	0.00	-10.00			
Australia	0.05	0.05	0.05	0.05	0.71	0.71	0.71	0.71	0.03	0.03	0.03	0.03	0.00	0.00	0.00	0.00			
Others	0.05	0.04	0.04	0.04	2.48	2.40	2.20	2.20	0.11	0.10	0.10	0.10	0.00	0.00	-0.01	-5.83			

World and Selected Countries and Regions

Table 08 Sorghum Area, Yield, and Production

Country / Region	Area (Million hectares)				Yield (Metric tons per hectare)				Production (Million metric tons)				Change in Production			
	Prel.		2024/25 Proj.		Prel.		2024/25 Proj.		Prel.		2024/25 Proj.		From last month		From last year	
	2022/23	2023/24	Jul	Aug	2022/23	2023/24	Jul	Aug	2022/23	2023/24	Jul	Aug	MMT	Percent	MMT	Percent
World	40.64	40.18	41.75	41.91	1.42	1.45	1.52	1.46	57.60	58.35	63.26	61.11	-2.15	-3.40	2.76	4.72
United States	1.85	2.48	2.18	2.14	2.58	3.26	4.34	3.32	4.77	8.07	9.48	7.08	-2.39	-25.26	-0.99	-12.25
Total Foreign	38.79	37.70	39.57	39.78	1.36	1.33	1.36	1.36	52.83	50.28	53.78	54.03	0.24	0.45	3.75	7.45
Africa																
Nigeria	5.70	5.70	6.10	6.10	1.19	1.12	1.18	1.18	6.81	6.40	7.20	7.20	0.00	0.00	0.80	12.50
Ethiopia	1.55	1.48	1.65	1.65	2.67	2.71	2.48	2.48	4.14	4.01	4.10	4.10	0.00	0.00	0.09	2.24
Sudan	7.24	5.99	7.50	7.50	0.72	0.51	0.67	0.67	5.25	3.06	5.00	5.00	0.00	0.00	1.95	63.67
Burkina Faso	1.96	1.90	1.90	1.90	1.03	0.93	1.00	1.00	2.01	1.77	1.90	1.90	0.00	0.00	0.13	7.22
Mali	1.64	1.50	1.50	1.50	0.97	1.02	1.00	1.00	1.58	1.53	1.50	1.50	0.00	0.00	-0.03	-1.83
Niger	3.79	3.70	3.70	3.70	0.55	0.46	0.51	0.51	2.10	1.70	1.90	1.90	0.00	0.00	0.20	11.76
Cameroon	0.74	0.74	0.74	0.74	1.62	1.62	1.62	1.62	1.20	1.20	1.20	1.20	0.00	0.00	0.00	0.00
Tanzania	1.00	1.00	1.00	1.00	1.00	1.00	1.00	1.00	1.00	1.00	1.00	1.00	0.00	0.00	0.00	0.00
Egypt	0.15	0.15	0.15	0.15	5.00	5.20	5.27	5.27	0.75	0.78	0.79	0.79	0.00	0.00	0.01	1.28
Uganda	0.25	0.25	0.25	0.25	0.90	0.90	0.90	0.90	0.23	0.23	0.23	0.23	0.00	0.00	0.00	0.00
Ghana	0.31	0.31	0.31	0.31	1.29	1.42	1.29	1.29	0.40	0.44	0.40	0.40	0.00	0.00	-0.04	-8.88
Mozambique	0.29	0.27	0.28	0.28	0.51	0.55	0.33	0.33	0.15	0.15	0.09	0.09	0.00	0.00	-0.06	-40.00
South Africa	0.03	0.04	0.04	0.04	2.76	2.25	3.25	3.25	0.09	0.09	0.13	0.13	0.00	0.00	0.04	44.44
Mexico	1.40	1.23	1.32	1.32	3.50	3.48	3.41	3.41	4.89	4.28	4.50	4.50	0.00	0.00	0.22	5.14
South America																
Argentina	0.50	0.60	0.70	0.70	3.22	4.17	4.29	4.29	1.61	2.50	3.00	3.00	0.00	0.00	0.50	20.00
Brazil	1.42	1.56	1.60	1.60	3.38	3.14	3.13	3.13	4.79	4.91	5.00	5.00	0.00	0.00	0.09	1.85
South Asia																
India	3.54	4.10	3.80	4.00	1.08	1.07	1.11	1.10	3.81	4.40	4.20	4.40	0.20	4.76	0.00	0.00
Pakistan	0.22	0.22	0.22	0.22	0.63	0.63	0.63	0.63	0.14	0.14	0.14	0.14	0.00	0.00	0.00	0.00
China	0.68	0.63	0.63	0.63	4.58	4.76	4.76	4.76	3.09	3.00	3.00	3.00	0.00	0.00	0.00	0.00
Australia	0.69	0.60	0.60	0.60	3.84	3.67	3.67	3.67	2.64	2.20	2.20	2.20	0.00	0.00	0.00	0.00
European Union	0.12	0.16	0.16	0.17	4.14	5.12	5.10	5.00	0.51	0.79	0.79	0.85	0.06	7.59	0.06	7.05
Others	5.59	5.58	5.43	5.43	1.01	1.02	1.02	1.01	5.64	5.71	5.52	5.51	-0.02	-0.33	-0.21	-3.62

World and Selected Countries and Regions

Table 09 Rice Area, Yield, and Production
World and Selected Countries and Regions

Country / Region	Area (Million hectares)				Yield (Metric tons per hectare)				Production (Million metric tons)				Change in Production			
	Prel.		2024/25 Proj.		Prel.		2024/25 Proj.		Prel.		2024/25 Proj.		From last month		From last year	
	2022/23	2023/24	Jul	Aug	2022/23	2023/24	Jul	Aug	2022/23	2023/24	Jul	Aug	MMT	Percent	MMT	Percent
World	165.49	165.46	167.57	166.88	4.66	4.70	4.71	4.72	516.03	520.42	528.17	527.71	-0.46	-0.09	7.29	1.40
United States	0.88	1.16	1.17	1.17	8.28	8.57	8.57	8.54	5.08	6.93	7.04	7.01	-0.03	-0.43	0.08	1.13
Total Foreign	164.61	164.30	166.39	165.71	4.64	4.67	4.68	4.70	510.95	513.49	521.13	520.70	-0.43	-0.08	7.21	1.40
East Asia																
China	29.45	28.95	29.00	29.00	7.08	7.14	7.19	7.19	145.95	144.62	146.00	146.00	0.00	0.00	1.38	0.95
Japan	1.50	1.46	1.44	1.44	6.86	6.84	6.87	6.87	7.48	7.27	7.20	7.20	0.00	0.00	-0.07	-0.99
Korea, South	0.73	0.71	0.69	0.69	6.87	6.92	6.86	6.86	3.76	3.70	3.60	3.60	0.00	0.00	-0.11	-2.89
Korea, North	0.54	0.54	0.54	0.54	3.87	4.18	4.18	4.18	1.36	1.47	1.47	1.47	0.00	0.00	0.00	0.00
South Asia																
India	47.83	47.60	48.50	48.00	4.26	4.32	4.27	4.31	135.76	137.00	138.00	138.00	0.00	0.00	1.00	0.73
Bangladesh	11.60	11.75	11.90	11.90	4.70	4.72	4.79	4.79	36.35	37.00	38.00	38.00	0.00	0.00	1.00	2.70
Pakistan	2.98	3.64	3.80	3.80	3.69	4.07	3.95	3.95	7.32	9.87	10.00	10.00	0.00	0.00	0.13	1.33
Nepal	1.45	1.45	1.45	1.45	3.79	3.66	3.72	3.72	3.65	3.53	3.60	3.60	0.00	0.00	0.07	1.98
Sri Lanka	1.15	1.16	1.15	1.15	3.63	4.22	4.48	4.48	2.84	3.33	3.50	3.50	0.00	0.00	0.17	5.04
Southeast Asia																
Indonesia	11.30	11.00	11.20	11.20	4.72	4.73	4.78	4.78	33.90	33.02	34.00	34.00	0.00	0.00	0.98	2.97
Vietnam	7.12	7.00	7.15	6.95	6.10	6.09	6.04	6.10	27.14	26.63	27.00	26.50	-0.50	-1.85	-0.13	-0.47
Thailand	11.07	10.65	10.70	10.70	2.86	2.85	2.85	2.85	20.91	20.00	20.10	20.10	0.00	0.00	0.10	0.50
Burma	6.80	6.80	6.80	6.80	2.71	2.73	2.78	2.78	11.80	11.90	12.10	12.10	0.00	0.00	0.20	1.68
Philippines	4.85	4.74	4.85	4.85	4.13	4.12	4.16	4.16	12.63	12.33	12.70	12.70	0.00	0.00	0.38	3.04
Cambodia	3.47	3.58	3.64	3.64	3.29	3.29	3.32	3.32	6.96	7.17	7.38	7.38	0.00	0.00	0.20	2.83
Laos	0.96	0.95	0.97	0.97	3.23	3.21	3.22	3.22	1.95	1.92	1.97	1.97	0.00	0.00	0.05	2.60
Malaysia	0.66	0.65	0.66	0.66	3.99	3.86	4.08	4.08	1.70	1.62	1.75	1.75	0.00	0.00	0.13	8.02
South America																
Brazil	1.48	1.55	1.60	1.60	6.78	6.85	6.89	6.89	6.82	7.23	7.50	7.50	0.00	0.00	0.28	3.81
Peru	0.42	0.43	0.43	0.43	8.34	8.52	8.60	8.60	2.40	2.50	2.55	2.55	0.00	0.00	0.05	2.00
Africa																
Egypt	0.60	0.63	0.60	0.60	8.70	8.70	8.70	8.70	3.60	3.78	3.60	3.60	0.00	0.00	-0.18	-4.76
Madagascar	1.60	1.60	1.60	1.60	2.87	2.75	2.75	2.75	2.93	2.82	2.82	2.82	0.00	0.00	0.00	0.00
Nigeria	3.50	3.50	3.50	3.50	2.43	2.43	2.49	2.49	5.36	5.36	5.48	5.48	0.00	0.00	0.13	2.35
European Union	0.33	0.36	0.40	0.40	6.11	6.05	6.78	6.78	1.29	1.38	1.72	1.72	0.00	0.00	0.34	24.35
Iran	0.57	0.57	0.57	0.57	5.32	5.30	5.32	5.32	2.00	2.00	2.00	2.00	0.00	0.00	0.01	0.25
Others	12.67	13.05	13.25	13.27	3.00	3.03	3.10	3.10	25.10	26.06	27.11	27.18	0.07	0.24	1.12	4.29

Yield is on a rough basis, before the milling process. Production is on a milled basis, after the milling process.

Table 10 Total Oilseed Area, Yield, and Production
World and Selected Countries and Regions

Country / Region	Area (Million hectares)				Yield (Metric tons per hectare)				Production (Million metric tons)				Change in Production			
	2022/23	Prel.	2024/25 Proj.		2022/23	Prel.	2024/25 Proj.		2022/23	Prel.	2024/25 Proj.		From last month		From last year	
		2023/24	Jul	Aug		2023/24	Jul	Aug		2023/24	Jul	Aug	MMT	Percent	MMT	Percent
World Total	--	--	--	--	--	--	--	--	637.94	657.49	686.09	690.54	4.45	0.65	33.05	5.03
Total Foreign	--	--	--	--	--	--	--	--	512.18	535.25	554.63	555.54	0.91	0.16	20.30	3.79
Oilseed, Copra	--	--	--	--	--	--	--	--	6.00	6.21	5.81	5.81	0.00	0.00	-0.40	-6.50
Oilseed, Palm Kernel	--	--	--	--	--	--	--	--	20.06	20.42	20.73	20.55	-0.18	-0.87	0.14	0.67
Major Oilseeds	267.41	270.89	274.56	276.38	2.29	2.33	2.40	2.40	611.87	630.86	659.55	664.18	4.63	0.70	33.32	5.28
United States	39.91	38.03	40.52	40.53	3.15	3.21	3.24	3.33	125.75	122.24	131.46	135.00	3.54	2.69	12.76	10.43
Foreign Oilseeds	227.50	232.86	234.04	235.85	2.14	2.18	2.26	2.24	486.12	508.62	528.09	529.18	1.09	0.21	20.56	4.04
South America	71.21	74.19	76.58	76.58	3.01	3.13	3.28	3.28	214.57	232.16	251.01	251.01	0.00	0.00	18.84	8.12
Brazil	46.46	47.77	49.56	49.56	3.59	3.32	3.54	3.54	166.77	158.66	175.53	175.53	0.00	0.00	16.87	10.63
Argentina	17.76	19.36	19.70	19.70	1.77	2.84	2.88	2.88	31.45	55.00	56.76	56.76	0.00	0.00	1.76	3.21
Paraguay	3.74	3.71	3.87	3.87	2.75	2.89	2.83	2.83	10.27	10.72	10.94	10.94	0.00	0.00	0.23	2.12
Bolivia	1.83	1.84	1.86	1.86	2.42	2.16	2.17	2.17	4.43	3.98	4.04	4.04	0.00	0.00	0.06	1.51
Uruguay	1.28	1.37	1.46	1.46	1.00	2.52	2.31	2.31	1.28	3.45	3.37	3.37	0.00	0.00	-0.08	-2.21
China	25.90	26.79	26.20	26.20	2.62	2.58	2.59	2.59	67.94	69.08	67.83	67.83	0.00	0.00	-1.25	-1.81
South Asia	43.63	44.21	44.06	44.36	1.04	1.03	1.07	1.07	45.22	45.63	47.12	47.51	0.39	0.82	1.88	4.11
India	40.19	40.30	40.18	40.48	1.03	1.01	1.05	1.05	41.29	40.71	42.13	42.51	0.39	0.92	1.80	4.43
Pakistan	2.51	2.99	2.61	2.61	1.06	1.23	1.25	1.25	2.67	3.68	3.27	3.27	0.00	0.00	-0.41	-11.19
European Union	12.32	12.31	12.17	12.17	2.61	2.71	2.74	2.67	32.13	33.32	33.29	32.46	-0.83	-2.48	-0.86	-2.57
United Kingdom	0.37	0.39	0.28	0.28	3.73	3.11	3.13	3.13	1.36	1.22	0.88	0.88	0.00	0.00	-0.34	-28.04
Former Soviet Union - 12	27.85	29.15	29.64	30.98	1.87	2.03	1.93	1.89	52.07	59.30	57.07	58.68	1.61	2.82	-0.62	-1.05
Russia	14.74	14.85	15.50	16.00	1.80	1.89	1.77	1.78	26.55	28.10	27.40	28.40	1.00	3.65	0.30	1.07
Ukraine	8.75	10.00	9.75	10.45	2.26	2.55	2.43	2.30	19.80	25.45	23.70	24.00	0.30	1.27	-1.45	-5.70
Uzbekistan	1.07	1.05	1.02	1.02	1.24	1.15	1.18	1.18	1.33	1.21	1.21	1.21	0.00	0.00	0.00	0.00
Canada	10.75	11.16	11.12	11.12	2.36	2.32	2.42	2.42	25.32	25.87	26.95	26.95	0.00	0.00	1.08	4.16
Africa	24.48	24.57	24.15	24.33	1.05	0.98	1.06	1.06	25.73	23.97	25.66	25.89	0.22	0.87	1.92	8.01
Nigeria	4.87	4.87	5.07	5.07	1.15	1.15	1.13	1.13	5.61	5.60	5.75	5.75	0.00	0.00	0.15	2.68
South Africa	1.88	1.87	1.94	1.94	2.02	1.48	2.00	1.99	3.80	2.77	3.87	3.88	0.01	0.13	1.11	39.93
Tanzania	1.36	1.47	1.47	1.47	0.91	0.87	0.87	0.87	1.23	1.28	1.28	1.28	0.00	0.00	0.00	0.00
Southeast Asia	3.11	3.07	3.04	3.04	1.38	1.38	1.39	1.39	4.30	4.25	4.24	4.24	0.00	0.00	-0.02	-0.38
Burma	1.98	1.97	1.98	1.98	1.22	1.24	1.26	1.26	2.40	2.44	2.50	2.50	0.00	0.00	0.06	2.25
Indonesia	0.87	0.84	0.81	0.81	1.52	1.49	1.48	1.48	1.32	1.26	1.20	1.20	0.00	0.00	-0.06	-4.38
Australia	4.61	4.06	3.80	3.80	2.13	1.73	1.80	1.80	9.82	7.04	6.84	6.84	0.00	0.00	-0.20	-2.87
Turkey	1.47	1.27	1.30	1.30	2.71	2.43	2.68	2.58	3.98	3.09	3.49	3.36	-0.13	-3.59	0.28	8.95
Others	1.81	1.69	1.69	1.69	2.03	2.18	2.20	2.10	3.67	3.69	3.73	3.55	-0.18	-4.83	-0.14	-3.82

World Total and Total Foreign: (Major Oilseeds plus copra and palm kernel) Major Oilseeds: (soybeans, sunflowerseeds, peanuts(inshell), cottonseed and rapeseed)

Table 11 Soybean Area, Yield, and Production

Country / Region	Area (Million hectares)				Yield (Metric tons per hectare)				Production (Million metric tons)				Change in Production			
	2022/23	Prel.	2024/25 Proj.		2022/23	Prel.	2024/25 Proj.		2022/23	Prel.	2024/25 Proj.		From last month		From last year	
		2023/24	Jul	Aug		2023/24	Jul	Aug		2023/24	Jul	Aug	MMT	Percent	MMT	Percent
World	137.05	139.79	143.35	145.72	2.76	2.83	2.94	2.94	378.50	395.12	421.85	428.73	6.87	1.63	33.60	8.50
United States	34.87	33.33	34.50	34.91	3.33	3.40	3.50	3.58	116.22	113.34	120.70	124.90	4.20	3.48	11.55	10.19
Total Foreign	102.17	106.46	108.85	110.80	2.57	2.65	2.77	2.74	262.28	281.78	301.15	303.83	2.68	0.89	22.05	7.83
South America																
Brazil	44.60	45.80	47.30	47.30	3.63	3.34	3.57	3.57	162.00	153.00	169.00	169.00	0.00	0.00	16.00	10.46
Argentina	14.40	16.50	16.90	16.90	1.74	2.97	3.02	3.02	25.00	49.00	51.00	51.00	0.00	0.00	2.00	4.08
Paraguay	3.60	3.56	3.70	3.70	2.79	2.95	2.89	2.89	10.05	10.50	10.70	10.70	0.00	0.00	0.20	1.90
Bolivia	1.60	1.60	1.61	1.61	2.57	2.28	2.30	2.30	4.11	3.65	3.70	3.70	0.00	0.00	0.05	1.37
Uruguay	0.93	1.22	1.30	1.30	0.75	2.62	2.38	2.38	0.70	3.20	3.10	3.10	0.00	0.00	-0.10	-3.13
East Asia																
China	10.24	10.47	10.50	10.50	1.98	1.99	1.97	1.97	20.28	20.84	20.70	20.70	0.00	0.00	-0.14	-0.67
Korea, South	0.06	0.07	0.07	0.07	2.03	2.07	2.06	2.06	0.13	0.14	0.14	0.14	0.00	0.00	0.00	0.71
Korea, North	0.16	0.16	0.16	0.16	1.15	1.15	1.15	1.15	0.18	0.18	0.18	0.18	0.00	0.00	0.00	0.00
Japan	0.15	0.16	0.16	0.16	1.60	1.59	1.64	1.64	0.24	0.25	0.26	0.26	0.00	0.00	0.01	4.86
India	13.08	13.20	12.80	13.50	0.95	0.90	0.95	0.95	12.41	11.88	12.20	12.80	0.60	4.92	0.93	7.79
Canada	2.12	2.26	2.30	2.30	3.09	3.09	3.00	3.00	6.54	6.98	6.90	6.90	0.00	0.00	-0.08	-1.16
Former Soviet Union - 12																
Russia	3.36	3.50	3.80	4.10	1.79	1.94	1.74	1.78	6.00	6.80	6.60	7.30	0.70	10.61	0.50	7.35
Ukraine	1.82	2.00	2.20	2.90	2.25	2.60	2.50	2.34	4.10	5.20	5.50	6.80	1.30	23.64	1.60	30.77
European Union	1.12	1.03	1.11	1.11	2.34	2.89	2.75	2.68	2.61	2.98	3.05	2.98	-0.08	-2.46	-0.01	-0.17
Southeast Asia																
Indonesia	0.33	0.32	0.31	0.31	1.18	1.17	1.16	1.16	0.39	0.38	0.36	0.36	0.00	0.00	-0.02	-4.00
Vietnam	0.03	0.03	0.03	0.03	1.60	1.61	1.62	1.62	0.05	0.05	0.04	0.04	0.00	0.00	0.00	-6.67
Thailand	0.03	0.03	0.03	0.03	1.63	1.63	1.63	1.63	0.05	0.05	0.05	0.05	0.00	0.00	0.00	0.00
Burma	0.13	0.12	0.12	0.12	1.04	1.04	1.04	1.04	0.13	0.13	0.12	0.12	0.00	0.00	-0.01	-4.00
Serbia	0.24	0.24	0.24	0.24	1.70	2.77	2.64	2.30	0.40	0.65	0.62	0.54	-0.08	-12.90	-0.11	-16.92
Mexico	0.12	0.09	0.10	0.10	1.52	2.06	1.55	1.55	0.18	0.19	0.16	0.16	0.00	0.00	-0.03	-16.22
Africa																
South Africa	1.15	1.15	1.20	1.20	2.41	1.55	2.33	2.33	2.77	1.78	2.80	2.80	0.00	0.00	1.02	57.30
Nigeria	1.20	1.15	1.35	1.35	0.98	1.00	0.96	0.96	1.18	1.15	1.30	1.30	0.00	0.00	0.15	13.04
Zambia	0.38	0.38	0.38	0.38	1.27	1.27	1.27	1.27	0.48	0.48	0.48	0.48	0.00	0.00	0.00	0.00
Uganda	0.17	0.17	0.17	0.17	1.18	1.18	1.18	1.18	0.20	0.20	0.20	0.20	0.00	0.00	0.00	0.00
Middle East																
Iran	0.08	0.07	0.07	0.07	2.27	2.36	2.43	2.43	0.17	0.17	0.17	0.17	0.00	0.00	0.01	3.03
Turkey	0.04	0.03	0.04	0.04	4.14	4.12	4.29	4.29	0.15	0.14	0.15	0.15	0.00	0.00	0.01	7.14
Others	1.07	1.16	0.93	1.18	1.68	1.58	1.81	1.62	1.79	1.84	1.68	1.91	0.23	13.71	0.07	3.58

World and Selected Countries and Regions

Table 12 Cottonseed Area, Yield, and Production

Country / Region	Area (Million hectares)				Yield (Metric tons per hectare)				Production (Million metric tons)				Change in Production			
	Prel.		2024/25 Proj.		Prel.		2024/25 Proj.		Prel.		2024/25 Proj.		From last month		From last year	
	2022/23	2023/24	Jul	Aug	2022/23	2023/24	Jul	Aug	2022/23	2023/24	Jul	Aug	MMT	Percent	MMT	Percent
World	31.20	30.60	31.75	30.84	1.36	1.36	1.37	1.38	42.44	41.50	43.47	42.57	-0.90	-2.07	1.07	2.57
United States	2.95	2.61	3.91	3.49	1.36	1.27	1.23	1.20	4.01	3.31	4.82	4.18	-0.64	-13.36	0.87	26.38
Total Foreign	28.25	27.99	27.84	27.35	1.36	1.36	1.39	1.40	38.43	38.20	38.65	38.39	-0.26	-0.66	0.19	0.51
South Asia																
India	12.93	12.70	12.40	12.00	0.86	0.88	0.86	0.87	11.17	11.12	10.61	10.40	-0.21	-2.01	-0.72	-6.49
Pakistan	1.80	2.40	2.10	2.10	0.94	1.21	1.24	1.24	1.69	2.90	2.60	2.60	0.00	0.00	-0.30	-10.44
China	3.10	2.85	2.85	2.85	3.89	3.76	3.78	3.78	12.05	10.72	10.78	10.78	0.00	0.00	0.06	0.55
Former Soviet Union - 12																
Uzbekistan	1.05	1.03	1.00	1.00	1.19	1.10	1.14	1.14	1.25	1.14	1.14	1.14	0.00	0.00	0.00	0.00
Turkmenistan	0.55	0.55	0.55	0.55	0.64	0.64	0.64	0.64	0.35	0.35	0.35	0.35	0.00	0.00	0.00	0.00
Tajikistan	0.17	0.19	0.18	0.18	1.11	1.16	1.15	1.15	0.19	0.22	0.21	0.21	0.00	0.00	-0.01	-6.33
Kazakhstan	0.13	0.12	0.12	0.12	1.05	1.00	0.94	0.94	0.13	0.12	0.11	0.11	0.00	0.00	0.00	-3.42
South America																
Brazil	1.60	1.66	1.94	1.94	2.43	2.91	2.86	2.86	3.89	4.84	5.54	5.54	0.00	0.00	0.71	14.62
Argentina	0.51	0.56	0.53	0.53	0.84	0.99	1.09	1.09	0.43	0.56	0.57	0.57	0.00	0.00	0.02	3.24
Middle East																
Turkey	0.56	0.44	0.49	0.49	2.88	2.38	2.69	2.69	1.60	1.05	1.31	1.31	0.00	0.00	0.26	24.98
Syria	0.03	0.03	0.03	0.03	2.23	2.23	2.23	2.23	0.07	0.07	0.07	0.07	0.00	0.00	0.00	0.00
Iran	0.12	0.10	0.10	0.10	1.52	1.18	1.35	1.35	0.18	0.12	0.14	0.14	0.00	0.00	0.02	14.41
Australia	0.65	0.51	0.55	0.55	2.24	2.48	2.28	2.28	1.45	1.25	1.25	1.25	0.00	0.00	0.00	0.00
European Union	0.31	0.25	0.26	0.26	1.70	1.33	1.70	1.70	0.53	0.34	0.44	0.44	0.00	0.00	0.10	29.29
Africa																
Burkina Faso	0.62	0.46	0.55	0.47	0.35	0.44	0.40	0.42	0.21	0.20	0.22	0.20	-0.02	-9.95	0.00	-1.00
Mali	0.60	0.71	0.72	0.72	0.35	0.52	0.53	0.53	0.21	0.37	0.38	0.38	0.00	0.00	0.02	4.09
Cameroon	0.23	0.24	0.25	0.25	1.29	1.54	1.35	1.35	0.30	0.37	0.33	0.33	0.00	0.00	-0.04	-10.81
Cote d'Ivoire	0.41	0.40	0.40	0.37	0.29	0.44	0.57	0.53	0.12	0.17	0.23	0.20	-0.03	-14.10	0.02	12.07
Benin	0.57	0.51	0.51	0.51	0.64	0.73	0.68	0.68	0.36	0.37	0.35	0.35	0.00	0.00	-0.03	-7.51
Tanzania	0.36	0.47	0.47	0.47	0.37	0.38	0.38	0.38	0.13	0.18	0.18	0.18	0.00	0.00	0.00	0.00
Egypt	0.14	0.10	0.12	0.13	0.92	0.96	0.95	0.93	0.13	0.10	0.11	0.12	0.01	11.01	0.03	26.04
Nigeria	0.27	0.27	0.27	0.27	0.56	0.56	0.56	0.56	0.15	0.15	0.15	0.15	0.00	0.00	0.00	0.00
Uganda	0.10	0.10	0.10	0.10	1.49	1.49	1.49	1.49	0.15	0.15	0.15	0.15	0.00	0.00	0.00	0.00
Zimbabwe	0.24	0.24	0.24	0.24	0.34	0.34	0.34	0.34	0.08	0.08	0.08	0.08	0.00	0.00	0.00	0.00
Sudan	0.20	0.20	0.20	0.20	1.53	1.53	1.53	1.53	0.31	0.31	0.31	0.31	0.00	0.00	0.00	0.00
Mexico	0.20	0.13	0.11	0.11	2.70	1.98	2.48	2.48	0.54	0.26	0.27	0.27	0.00	0.00	0.01	5.00
Burma	0.19	0.18	0.19	0.19	1.26	1.24	1.24	1.24	0.23	0.23	0.24	0.24	0.00	0.00	0.01	4.42
Others	0.62	0.60	0.64	0.64	0.84	0.80	0.86	0.86	0.53	0.49	0.55	0.55	0.00	0.00	0.06	12.55

World and Selected Countries and Regions

Table 13 Peanut Area, Yield, and Production

Country / Region	Area (Million hectares)				Yield (Metric tons per hectare)				Production (Million metric tons)				Change in Production			
	Prel.		2024/25 Proj.		Prel.		2024/25 Proj.		Prel.		2024/25 Proj.		From last month		From last year	
	2022/23	2023/24	Jul	Aug	2022/23	2023/24	Jul	Aug	2022/23	2023/24	Jul	Aug	MMT	Percent	MMT	Percent
World	28.93	29.51	29.36	29.37	1.71	1.68	1.76	1.75	49.41	49.53	51.53	51.52	-0.01	-0.02	1.99	4.01
United States	0.56	0.64	0.69	0.71	4.50	4.19	4.48	4.36	2.51	2.67	3.09	3.08	-0.01	-0.39	0.41	15.16
Total Foreign	28.37	28.87	28.67	28.67	1.65	1.62	1.69	1.69	46.89	46.86	48.44	48.44	0.00	0.00	1.58	3.38
China	4.68	4.98	4.85	4.85	3.91	3.86	3.92	3.92	18.33	19.22	19.00	19.00	0.00	0.00	-0.22	-1.13
Africa																
Nigeria	3.40	3.45	3.45	3.45	1.26	1.25	1.25	1.25	4.28	4.30	4.30	4.30	0.00	0.00	0.00	0.00
Sudan	3.07	3.01	2.50	2.50	0.86	0.46	0.80	0.80	2.64	1.39	2.00	2.00	0.00	0.00	0.61	44.30
Senegal	1.23	1.25	1.25	1.25	1.23	1.38	1.36	1.36	1.50	1.73	1.70	1.70	0.00	0.00	-0.03	-1.62
Cameroon	0.43	0.43	0.43	0.43	1.40	1.40	1.40	1.40	0.60	0.60	0.60	0.60	0.00	0.00	0.00	0.00
Ghana	0.37	0.37	0.37	0.37	1.65	1.62	1.62	1.62	0.61	0.60	0.60	0.60	0.00	0.00	0.00	0.00
Chad	0.76	0.76	0.76	0.76	1.10	1.09	1.09	1.09	0.83	0.83	0.83	0.83	0.00	0.00	0.00	0.00
Malawi	0.40	0.40	0.40	0.40	0.88	0.88	0.88	0.88	0.35	0.35	0.35	0.35	0.00	0.00	0.00	0.00
Congo (Kinshasa)	0.53	0.53	0.53	0.53	0.91	0.91	0.91	0.91	0.48	0.48	0.48	0.48	0.00	0.00	0.00	0.00
Niger	0.97	0.92	0.92	0.92	0.69	0.65	0.65	0.65	0.67	0.60	0.60	0.60	0.00	0.00	0.00	0.00
Mali	0.43	0.43	0.43	0.43	1.04	1.00	1.00	1.00	0.44	0.43	0.43	0.43	0.00	0.00	0.00	0.00
Uganda	0.35	0.35	0.35	0.35	0.57	0.57	0.57	0.57	0.20	0.20	0.20	0.20	0.00	0.00	0.00	0.00
Burkina Faso	0.63	0.64	0.64	0.64	0.89	0.90	0.90	0.90	0.56	0.58	0.58	0.58	0.00	0.00	0.00	0.00
Guinea	0.90	0.90	0.90	0.90	1.14	1.11	1.11	1.11	1.03	1.00	1.00	1.00	0.00	0.00	0.00	0.00
Egypt	0.06	0.06	0.06	0.06	3.20	3.20	3.20	3.20	0.21	0.21	0.21	0.21	0.00	0.00	0.00	0.00
Central African Republic	0.13	0.13	0.13	0.13	1.15	1.15	1.15	1.15	0.15	0.15	0.15	0.15	0.00	0.00	0.00	0.00
South Africa	0.03	0.04	0.04	0.04	2.29	1.88	2.00	2.00	0.07	0.08	0.08	0.08	0.00	0.00	0.01	6.67
Mozambique	0.38	0.38	0.38	0.38	0.34	0.34	0.34	0.34	0.13	0.13	0.13	0.13	0.00	0.00	0.00	0.00
Cote d'Ivoire	0.17	0.17	0.17	0.17	1.47	1.45	1.45	1.45	0.24	0.24	0.24	0.24	0.00	0.00	0.00	0.00
Benin	0.16	0.24	0.18	0.18	1.03	0.74	0.97	0.97	0.16	0.18	0.18	0.18	0.00	0.00	0.00	-2.23
South Asia																
India	4.96	5.00	5.50	5.50	1.27	1.20	1.29	1.29	6.30	6.00	7.10	7.10	0.00	0.00	1.10	18.33
Pakistan	0.13	0.13	0.13	0.13	0.88	0.88	0.88	0.88	0.12	0.12	0.12	0.12	0.00	0.00	0.00	0.00
Southeast Asia																
Indonesia	0.54	0.52	0.50	0.50	1.72	1.69	1.68	1.68	0.93	0.88	0.84	0.84	0.00	0.00	-0.04	-4.55
Burma	1.07	1.07	1.08	1.08	1.55	1.59	1.63	1.63	1.65	1.70	1.75	1.75	0.00	0.00	0.05	2.94
Vietnam	0.15	0.15	0.14	0.14	2.63	2.62	2.64	2.64	0.40	0.38	0.37	0.37	0.00	0.00	-0.01	-3.39
Thailand	0.02	0.02	0.02	0.02	1.67	1.67	1.67	1.67	0.04	0.04	0.04	0.04	0.00	0.00	0.00	0.00
South America																
Argentina	0.37	0.42	0.40	0.40	2.59	3.57	3.38	3.38	0.96	1.50	1.35	1.35	0.00	0.00	-0.15	-10.00
Brazil	0.20	0.26	0.26	0.26	3.95	2.90	3.46	3.46	0.79	0.74	0.90	0.90	0.00	0.00	0.16	21.62
Mexico	0.05	0.05	0.05	0.05	1.76	1.74	1.70	1.70	0.09	0.08	0.09	0.09	0.00	0.00	0.01	6.25
Others	1.80	1.81	1.85	1.85	1.18	1.19	1.21	1.21	2.13	2.15	2.25	2.25	0.00	0.00	0.10	4.70

Table 14 Sunflowerseed Area, Yield, and Production

Country / Region	Area (Million hectares)				Yield (Metric tons per hectare)				Production (Million metric tons)				Change in Production						
	2022/23	Prel.		2024/25 Proj.		2022/23	Prel.		2024/25 Proj.		2022/23	Prel.		2024/25 Proj.		From last month		From last year	
		2023/24	Jul	Aug	2023/24		Jul	Aug	2023/24	Jul		Aug	MMT	Percent	MMT	Percent			
World	28.30	27.95	27.89	27.79	1.87	2.00	1.97	1.89	52.78	55.94	54.82	52.54	-2.28	-4.15	-3.40	-6.07			
United States	0.65	0.51	0.35	0.35	1.97	2.00	1.99	1.99	1.27	1.03	0.70	0.70	0.00	0.00	-0.33	-32.23			
Total Foreign	27.65	27.43	27.54	27.44	1.86	2.00	1.97	1.89	51.51	54.91	54.12	51.85	-2.28	-4.20	-3.07	-5.58			
Former Soviet Union - 12																			
Russia	9.11	9.30	9.50	9.30	1.78	1.84	1.74	1.72	16.25	17.10	16.50	16.00	-0.50	-3.03	-1.10	-6.43			
Ukraine	5.70	6.40	6.20	6.20	2.14	2.42	2.34	2.18	12.20	15.50	14.50	13.50	-1.00	-6.90	-2.00	-12.90			
Kazakhstan	1.09	1.13	1.15	1.25	1.20	1.10	1.13	1.24	1.30	1.24	1.30	1.55	0.25	19.23	0.31	25.40			
European Union	4.97	4.80	4.95	4.95	1.89	2.08	2.20	2.05	9.39	10.00	10.90	10.15	-0.75	-6.88	0.15	1.50			
South America																			
Argentina	2.45	1.84	1.85	1.85	2.05	2.11	2.05	2.05	5.02	3.90	3.80	3.80	0.00	0.00	-0.10	-2.44			
Uruguay	0.01	0.01	0.01	0.01	0.91	0.92	1.00	1.00	0.01	0.01	0.01	0.01	0.00	0.00	0.00	-9.09			
Bolivia	0.23	0.24	0.25	0.25	1.39	1.38	1.36	1.36	0.32	0.33	0.34	0.34	0.00	0.00	0.01	3.03			
Brazil	0.06	0.06	0.06	0.06	1.52	1.52	1.50	1.50	0.09	0.09	0.09	0.09	0.00	0.00	0.01	5.88			
Paraguay	0.03	0.02	0.03	0.03	1.64	1.63	1.60	1.60	0.04	0.04	0.04	0.04	0.00	0.00	0.00	2.56			
China	0.62	0.70	0.60	0.60	2.79	2.83	2.92	2.92	1.74	1.98	1.75	1.75	0.00	0.00	-0.23	-11.75			
South Asia																			
India	0.36	0.15	0.18	0.18	0.59	0.75	0.63	0.63	0.22	0.11	0.11	0.11	0.00	0.00	0.00	0.89			
Pakistan	0.07	0.08	0.08	0.08	1.72	1.35	1.31	1.31	0.12	0.11	0.11	0.11	0.00	0.00	0.00	-2.78			
Middle East																			
Turkey	0.79	0.70	0.69	0.69	2.41	2.21	2.43	2.25	1.90	1.55	1.68	1.55	-0.13	-7.46	0.00	0.00			
Iran	0.04	0.04	0.04	0.04	1.02	1.05	1.07	1.07	0.04	0.04	0.05	0.05	0.00	0.00	0.00	4.65			
Israel	0.00	0.00	0.00	0.00	2.00	4.00	4.00	4.00	0.00	0.00	0.00	0.00	0.00	0.00	0.00	0.00			
Africa																			
Egypt	0.01	0.01	0.01	0.01	2.75	2.63	2.75	2.75	0.02	0.02	0.02	0.02	0.00	0.00	0.00	4.76			
Morocco	0.03	0.02	0.02	0.02	1.11	1.27	1.17	1.17	0.03	0.03	0.03	0.03	0.00	0.00	0.00	0.00			
South Africa	0.56	0.53	0.54	0.54	1.29	1.23	1.30	1.30	0.72	0.65	0.70	0.70	0.00	0.00	0.05	7.69			
Burma	0.60	0.60	0.60	0.60	0.65	0.65	0.65	0.65	0.39	0.39	0.39	0.39	0.00	0.00	0.00	0.00			
Canada	0.04	0.04	0.02	0.02	2.21	2.30	2.17	2.17	0.08	0.09	0.05	0.05	0.00	0.00	-0.04	-45.65			
Australia	0.03	0.03	0.02	0.02	1.48	1.28	1.50	1.50	0.04	0.03	0.03	0.03	0.00	0.00	0.00	-6.25			
Others	0.86	0.73	0.73	0.73	1.83	2.33	2.36	2.15	1.58	1.70	1.73	1.58	-0.15	-8.68	-0.12	-7.29			

World and Selected Countries and Regions

Table 15 Rapeseed Area, Yield, and Production

Country / Region	Area (Million hectares)				Yield (Metric tons per hectare)				Production (Million metric tons)				Change in Production			
	Prel.		2024/25 Proj.		Prel.		2024/25 Proj.		Prel.		2024/25 Proj.		From last month		From last year	
	2022/23	2023/24	Jul	Aug	2022/23	2023/24	Jul	Aug	2022/23	2023/24	Jul	Aug	MMT	Percent	MMT	Percent
World	41.95	43.05	42.21	42.67	2.12	2.06	2.08	2.08	88.75	88.77	87.88	88.83	0.95	1.08	0.06	0.07
United States	0.88	0.94	1.07	1.07	1.98	2.01	2.02	2.02	1.74	1.90	2.15	2.15	0.00	0.00	0.26	13.56
Total Foreign	41.07	42.11	41.15	41.60	2.12	2.06	2.08	2.08	87.01	86.87	85.73	86.68	0.95	1.10	-0.20	-0.23
European Union	5.92	6.22	5.85	5.85	3.31	3.22	3.23	3.23	19.61	20.00	18.90	18.90	0.00	0.00	-1.10	-5.50
United Kingdom	0.37	0.39	0.28	0.28	3.73	3.11	3.13	3.13	1.36	1.22	0.88	0.88	0.00	0.00	-0.34	-28.04
Switzerland	0.03	0.03	0.03	0.03	3.68	3.52	3.52	3.52	0.09	0.09	0.09	0.09	0.00	0.00	0.00	0.00
Canada	8.60	8.86	8.80	8.80	2.17	2.12	2.27	2.27	18.70	18.80	20.00	20.00	0.00	0.00	1.20	6.38
China	7.25	7.79	7.40	7.40	2.14	2.10	2.11	2.11	15.53	16.32	15.60	15.60	0.00	0.00	-0.72	-4.42
South Asia																
India	8.85	9.25	9.30	9.30	1.27	1.25	1.30	1.30	11.20	11.60	12.10	12.10	0.00	0.00	0.50	4.31
Pakistan	0.51	0.38	0.30	0.30	1.46	1.46	1.50	1.50	0.74	0.56	0.45	0.45	0.00	0.00	-0.11	-19.21
Bangladesh	0.81	0.80	1.10	1.10	1.30	1.29	1.30	1.30	1.05	1.03	1.43	1.43	0.00	0.00	0.40	38.83
Former Soviet Union - 12																
Russia	2.27	2.05	2.20	2.60	1.89	2.05	1.95	1.96	4.30	4.20	4.30	5.10	0.80	18.60	0.90	21.43
Ukraine	1.23	1.60	1.35	1.35	2.85	2.97	2.74	2.74	3.50	4.75	3.70	3.70	0.00	0.00	-1.05	-22.11
Belarus	0.36	0.40	0.48	0.48	2.22	2.25	2.14	2.25	0.80	0.90	1.03	1.08	0.06	5.37	0.18	20.00
Kazakhstan	0.13	0.09	0.10	0.15	1.48	1.32	1.35	1.47	0.19	0.12	0.14	0.22	0.09	62.96	0.10	78.86
Australia	3.90	3.50	3.20	3.20	2.12	1.63	1.72	1.72	8.27	5.70	5.50	5.50	0.00	0.00	-0.20	-3.51
South America																
Chile	0.03	0.04	0.04	0.04	3.79	3.82	3.86	3.86	0.13	0.15	0.14	0.14	0.00	0.00	-0.01	-6.90
Paraguay	0.07	0.07	0.08	0.08	1.77	1.50	1.53	1.53	0.12	0.11	0.12	0.12	0.00	0.00	0.01	9.52
Ethiopia	0.03	0.03	0.03	0.03	1.80	1.80	1.80	1.80	0.05	0.05	0.05	0.05	0.00	0.00	0.00	0.00
Others	0.72	0.62	0.63	0.63	1.91	2.10	2.12	2.11	1.38	1.29	1.33	1.34	0.01	0.38	0.04	3.40

World and Selected Countries and Regions

Table 16 Copra, Palm Kernel, and Palm Oil Production

Country / Region	Production (Million metric tons)				Change in Production			
	2022/23	Prel.	2024/25 Proj.		From last month		From last year	
		2023/24	Jul	Aug	MMT	Percent	MMT	Percent
Oilseed, Copra								
Philippines	2.60	2.90	2.50	2.50	0.00	0.00	-0.40	-13.79
Indonesia	1.68	1.69	1.68	1.68	0.00	0.00	-0.01	-0.59
India	0.94	0.94	0.94	0.94	0.00	0.00	0.00	0.00
Vietnam	0.29	0.29	0.29	0.29	0.00	0.00	0.00	0.00
Papua New Guinea	0.10	0.09	0.10	0.10	0.00	0.00	0.01	11.11
Sri Lanka	0.07	0.07	0.07	0.07	0.00	0.00	0.00	0.00
Thailand	0.07	0.07	0.07	0.07	0.00	0.00	0.00	0.00
Mexico	0.05	0.05	0.05	0.05	0.00	0.00	0.00	0.00
Cote d'Ivoire	0.03	0.03	0.03	0.03	0.00	0.00	0.00	0.00
Malaysia	0.03	0.03	0.03	0.03	0.00	0.00	0.00	0.00
World	6.00	6.21	5.81	5.81	0.00	0.00	-0.40	-6.44
Oilseed, Palm Kernel								
Indonesia	12.00	11.90	12.20	12.00	-0.20	-1.64	0.10	0.84
Malaysia	4.49	4.72	4.71	4.71	0.00	0.00	-0.01	-0.21
Nigeria	0.90	1.10	1.10	1.10	0.00	0.00	0.00	0.00
Thailand	0.86	0.86	0.87	0.89	0.02	2.30	0.03	3.49
Colombia	0.33	0.35	0.35	0.35	0.00	0.00	0.00	0.00
Guatemala	0.18	0.18	0.19	0.19	0.00	0.00	0.00	0.00
Papua New Guinea	0.17	0.18	0.18	0.18	0.00	0.00	0.00	0.00
Brazil	0.15	0.16	0.16	0.16	0.00	0.00	0.00	0.00
Honduras	0.16	0.16	0.16	0.16	0.00	0.00	0.00	0.00
Cameroon	0.15	0.15	0.15	0.15	0.00	0.00	0.00	0.00
World	20.06	20.42	20.73	20.55	-0.18	-0.87	0.13	0.64
Oil, Palm								
Indonesia	46.50	46.50	47.50	47.00	-0.50	-1.05	0.50	1.08
Malaysia	18.39	19.25	19.20	19.20	0.00	0.00	-0.05	-0.26
Thailand	3.33	3.28	3.36	3.50	0.14	4.17	0.22	6.71
Colombia	1.80	1.90	1.95	1.95	0.00	0.00	0.05	2.63
Nigeria	1.40	1.50	1.50	1.50	0.00	0.00	0.00	0.00
Guatemala	0.91	0.92	0.95	0.95	0.00	0.00	0.02	2.17
Papua New Guinea	0.80	0.82	0.83	0.83	0.00	0.00	0.01	1.22
Cote d'Ivoire	0.60	0.60	0.60	0.60	0.00	0.00	0.00	0.00
Honduras	0.60	0.60	0.60	0.60	0.00	0.00	0.00	0.00
Brazil	0.57	0.59	0.60	0.60	0.00	0.00	0.02	3.45
World	77.96	79.03	80.19	79.83	-0.36	-0.45	0.80	1.01

World and Selected Countries and Regions

Table 17 Cotton Area, Yield, and Production

Country / Region	Area (Million hectares)				Yield (Kilograms per hectare)				Production (Million 480 lb. bales)				Change in Production			
	Prel.		2024/25 Proj.		Prel.		2024/25 Proj.		Prel.		2024/25 Proj.		From last month		From last year	
	2022/23	2023/24	Jul	Aug	2022/23	2023/24	Jul	Aug	2022/23	2023/24	Jul	Aug	MBales	Percent	MBales	Percent
World	31.71	31.30	32.41	31.49	800	790	808	813	116.46	113.58	120.19	117.63	-2.55	-2.12	4.05	3.57
United States	2.95	2.61	3.91	3.49	1,068	1,008	946	941	14.47	12.07	17.00	15.11	-1.89	-11.13	3.04	25.21
Total Foreign	28.76	28.69	28.49	28.00	772	770	788	797	102.00	101.51	103.19	102.53	-0.66	-0.64	1.01	1.00
South Asia																
India	12.93	12.70	12.40	12.00	443	449	439	445	26.30	26.20	25.00	24.50	-0.50	-2.00	-1.70	-6.49
Pakistan	1.80	2.40	2.10	2.10	472	608	622	622	3.90	6.70	6.00	6.00	0.00	0.00	-0.70	-10.45
China	3.10	2.85	2.85	2.85	2,160	2,089	2,101	2,101	30.75	27.35	27.50	27.50	0.00	0.00	0.15	0.55
South America																
Brazil	1.60	1.66	1.94	1.94	1,595	1,911	1,874	1,874	11.72	14.57	16.70	16.70	0.00	0.00	2.13	14.62
Argentina	0.51	0.56	0.53	0.53	495	583	643	643	1.17	1.50	1.55	1.55	0.00	0.00	0.05	3.33
Paraguay	0.05	0.06	0.07	0.07	890	812	837	837	0.18	0.21	0.25	0.25	0.00	0.00	0.05	21.95
Africa																
Burkina Faso	0.62	0.46	0.55	0.47	273	346	317	334	0.78	0.73	0.80	0.72	-0.08	-10.00	-0.01	-1.37
Mali	0.60	0.71	0.72	0.72	269	399	408	408	0.74	1.30	1.35	1.35	0.00	0.00	0.05	3.85
Cote d'Ivoire	0.41	0.40	0.40	0.37	236	358	463	430	0.45	0.65	0.85	0.73	-0.12	-14.12	0.08	12.31
Benin	0.57	0.51	0.51	0.51	418	482	446	446	1.10	1.13	1.05	1.05	0.00	0.00	-0.09	-7.52
Egypt	0.14	0.10	0.12	0.13	661	686	682	670	0.43	0.32	0.36	0.40	0.04	11.11	0.09	26.98
Cameroon	0.23	0.24	0.25	0.25	563	671	587	587	0.60	0.74	0.66	0.66	0.00	0.00	-0.08	-10.81
Tanzania	0.36	0.47	0.47	0.47	184	220	220	220	0.31	0.47	0.47	0.47	0.00	0.00	0.00	0.00
Nigeria	0.27	0.27	0.27	0.27	282	282	282	282	0.35	0.35	0.35	0.35	0.00	0.00	0.00	0.00
Zimbabwe	0.24	0.24	0.24	0.24	195	195	195	195	0.22	0.22	0.22	0.22	0.00	0.00	0.00	0.00
Ethiopia	0.05	0.06	0.06	0.06	726	713	713	713	0.18	0.18	0.18	0.18	0.00	0.00	0.00	0.00
Former Soviet Union - 12																
Uzbekistan	1.05	1.03	1.00	1.00	664	613	631	631	3.20	2.90	2.90	2.90	0.00	0.00	0.00	0.00
Turkmenistan	0.55	0.55	0.55	0.55	356	356	356	356	0.90	0.90	0.90	0.90	0.00	0.00	0.00	0.00
Tajikistan	0.17	0.19	0.18	0.18	615	647	641	641	0.48	0.57	0.53	0.53	0.00	0.00	-0.04	-6.19
Kazakhstan	0.13	0.12	0.12	0.12	584	558	526	526	0.34	0.30	0.29	0.29	0.00	0.00	-0.01	-3.33
Middle East																
Turkey	0.56	0.44	0.49	0.49	1,922	1,583	1,796	1,796	4.90	3.20	4.00	4.00	0.00	0.00	0.80	25.00
Syria	0.03	0.03	0.03	0.03	1,161	1,161	1,161	1,161	0.16	0.16	0.16	0.16	0.00	0.00	0.00	0.00
Iran	0.12	0.10	0.10	0.10	977	762	871	871	0.53	0.35	0.40	0.40	0.00	0.00	0.05	14.29
Australia	0.65	0.51	0.55	0.55	1,943	2,156	1,979	1,979	5.80	5.00	5.00	5.00	0.00	0.00	0.00	0.00
Mexico	0.20	0.13	0.11	0.11	1,720	1,491	1,583	1,583	1.58	0.90	0.80	0.80	0.00	0.00	-0.10	-10.81
Burma	0.19	0.18	0.19	0.19	664	654	654	654	0.56	0.55	0.57	0.57	0.00	0.00	0.02	4.39
Others	1.65	1.75	1.73	1.73	579	510	549	549	4.39	4.09	4.36	4.35	0.00	-0.02	0.26	6.45

World and Selected Countries and Regions

TABLE 18

The table below presents a record of the August projection and the final Estimate. Using world wheat production as an example, the "root mean square error" means that chances are 2 out of 3 that the current forecast will not be above or below the final estimate by more than 2.2 percent. Chances are 9 out of 10 (90% confidence level) that the difference will not exceed 3.7 percent. The average difference between the August projection and the final estimate is 10.3 million tons, ranging from 0.2 million to 32.1 million tons. The August projection has been below the estimate 29 times and above 14 times.

RELIABILITY OF PRODUCTION PROJECTIONS 1/

COMMODITY AND REGION	Root mean square error	90 percent confidence interval	Difference between forecast and final estimate				
			Average	Smallest	Largest	Years	
						Below final	Above final
	Percent		---Million metric tons---				
WHEAT							
World	2.2	3.7	10.3	0.2	32.1	29	14
U.S.	2.7	4.5	1.2	0.0	4.2	17	26
Foreign	2.4	4.1	10.2	0.6	31.1	29	14
COARSE GRAINS 2/							
World	2.3	3.9	18.6	0.4	53.7	32	11
U.S.	5.9	10.0	10.0	0.0	31.4	26	17
Foreign	2.4	4.1	14.3	0.7	58.4	28	15
RICE (Milled)							
World	2.2	3.7	6.1	0.1	24.4	28	15
U.S.	5.7	9.5	0.3	0.0	0.7	22	21
Foreign	2.2	3.8	6.1	0.4	24.7	29	14
SOYBEANS							
World	4.8	8.0	8.2	0.3	30.9	22	21
U.S.	5.9	10.0	3.4	0.0	11.1	22	20
Foreign	7.6	12.7	7.4	1.1	33.5	20	23
COTTON			---Million 480-lb. bales---				
World	4.8	8.1	3.3	0.0	13.2	22	20
U.S.	8.8	14.8	1.1	0.0	3.9	21	21
Foreign	5.2	8.7	2.9	0.0	10.9	22	20
UNITED STATES			-----Million bushels-----				
<i>CORN</i>	6.4	10.7	377	1	1,096	25	18
<i>SORGHUM</i>	11.6	19.6	34	1	108	22	21
<i>BARLEY</i>	6.2	10.5	14	1	67	17	26
<i>OATS</i>	9.9	16.6	12	0	57	9	33

1/ Marketing years 1981/82 through 2023/24 for grains, soybeans (U.S. only), and cotton. Final for grains, soybeans, and cotton is defined as the first November estimate following the marketing year for 1981/82 through 2022/23, and for 2023/24 the last month's estimate.

2/ Includes corn, sorghum, barley, oats, rye, millet, and mixed grain.