

3D Printing



Material

Professional filament manufacturer

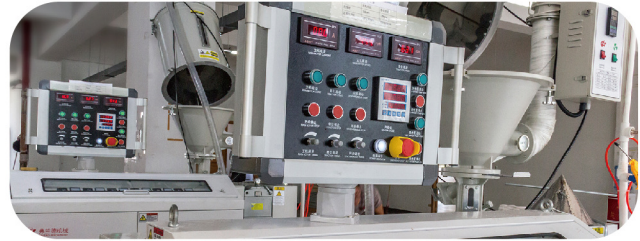
9000 m²
Occupied area

2000 Tons/Year
Production capacity

30-Day Guarantee
For your satisfaction

Various Colors
Customized service

30
Automated production lines



FDM Filament

Basic Filaments

PLA Basic	01
PLA Pro	01
PLA SE	01
PETG Basic	02
PETG PRO	02
ABS Basic	02
ABS Pro	03
ASA Basic	03

High Speed Filaments

HS PLA	03
HS PLA Rainbow	04
HS PLA Multicolor	04
HS PLA Marble	04

Esthetic Filaments

PLA Silk	05
PLA Silk Dual Color	05
PLA Silk Rainbow	05
PLA Matte	06
PLA Galaxy	06
PLA Galaxy Luminous	06
PLA Color Change	07
PLA Wood	07
PLA Metal	07
ABS Matte	08

Professional Functional Filaments

PLA-A	08
PETG-A	08
Flexible	09
TPU 95A	09
HIPS	09
PVA	10

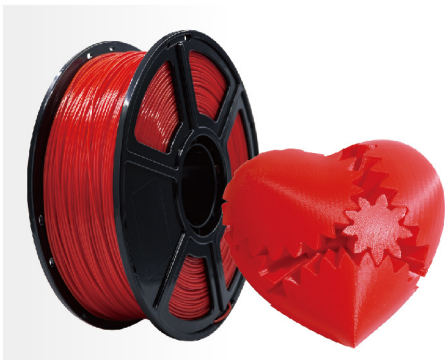
Engineering Filaments

PA1010	10
PA6/66	10
PC	11
PC-ABS	11
PLA-CF	11
PETG-CF	12
ASA-CF	12
PET-CF	12
PA12-CF	13
PPA-CF	13
PPS-CF	13

Resin

Model 1.0 Yellow	15
Model 1.0 Gray	15
Model 2.0 Yellow	15
Surgical Guide Resin	16
IBT Flexible Resin	16
Temporary Crown & Bridge Resin	16
Gingiva Mask Resin	17
Castable Wax Resin	17

PLA Basic



Easy to print | Reliable | Safe

Flashforge's PLA Basic is a reliable, eco-friendly filament compatible with all major FFF 3D printers.

Made from FDA-approved, biodegradable materials, it ensures enhanced tenacity and smooth printing.

Color

Standard Series



Dream Series



Transparent Series



Printing Performance



Impact Strength



Tensile Strength



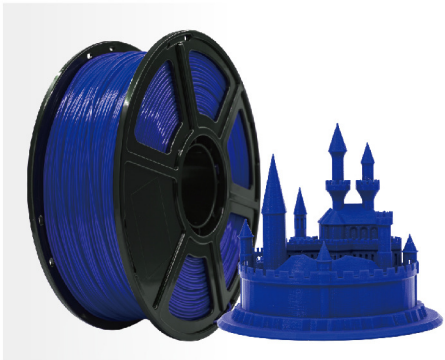
Bending Strength



Heat Resistance



PLA Pro



High tenacity | Easy to print | Neat arrangement

Flashforge's PLA Pro is a high-tenacity, eco-friendly filament compatible with all major 3D printers.

It offers superior impact strength and smooth feeding, making it ideal for both general and functional models.

Color

Standard Series



Printing Performance



Impact Strength



Tensile Strength



Bending Strength



Heat Resistance



PLA SE



Easy to print | High cost performance | High tenacity

Flashforge's PLA SE is a cost-effective, easy-to-use filament compatible with all major 3D printers.

Made from FDA-approved, biodegradable materials, it meets both environmental and safety standards.

Color

Standard Series



Printing Performance



Impact Strength



Tensile Strength



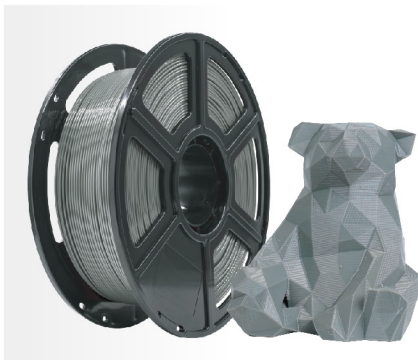
Bending Strength



Heat Resistance



PETG Basic



Safe | Temperature resistant | High glossy

Flashforge's PETG Basic is a reliable, easy-to-use filament with balanced mechanical and thermal properties. It offers performance comparable to PLA and strength similar to ABS, using FDA-approved, food-contact compliant materials to meet safety standards.

Color

Standard Series



Transparent Series



Printing Performance



Impact Strength



Tensile Strength



Bending Strength



Heat Resistance



PETG Pro



Easy to print | Safe | High glossy

Flashforge's PETG Pro is an enhanced PETG filament with balanced mechanical and thermal properties, improved usability, and reduced printing temperature. Made from FDA-approved, food-contact compliant materials, it meets safety standards.

Color

Standard Series



Printing Performance



Impact Strength



Tensile Strength



Bending Strength



Heat Resistance



ABS Basic



High toughness | High impact resistance | Excellent temperature resistance | Chemical resistance

Flashforge's ABS Basic is a cost-effective filament with excellent strength, durability, and temperature resistance. Ideal for professional and industrial use, it provides reliable performance and impact resistance.

Color

Standard Series



Printing Performance



Impact Strength



Tensile Strength



Bending Strength



Heat Resistance



ABS Pro



**High toughness | High impact resistance |
Excellent temperature resistance |
Excellent dimensional stability**

Flashforge's ABS Pro has lower shrinkage, less odor, and improved mechanical properties compared to standard ABS. It reduces warping and cracking for a more reliable and user-friendly experience.

Color

Standard Series



ASA Basic



**Excellent UV and weather resistance |
High toughness | High impact resistance**

Flashforge's ASA Basic filament has properties similar to ABS Basic, with excellent tenacity and temperature resistance. It offers improved temperature and UV resistance, making it suitable for long-term outdoor use.

Color

Standard Series



HS PLA



High fluidity | High-speed printing

Flashforge's HS PLA is a high-fluidity filament designed for high-speed FFF 3D printers. Made from FDA-approved, food-contact compliant, and biodegradable materials, it offers improved fluidity and meets safety and environmental standards.

Color

Standard Series



HS PLA Rainbow



Rainbow gradient effect | Easy to use | High speed

Flashforge's HS PLA Rainbow is a colorful, high-speed filament for all major FFF 3D printers, providing enhanced tenacity and fluidity. Made from FDA-approved, food-contact compliant, and biodegradable materials.

Color

Standard Series



Printing Performance



Impact Strength



Tensile Strength



Bending Strength



Heat Resistance



HS PLA Multicolor



Color-changing | Easy to print | High speed

Flashforge's HS PLA Multicolor features chameleon powder for color-shifting effects from different angles, while retaining the high-speed printing and performance benefits of HS PLA. Compatible with all major 3D printers.

Color

Standard Series



Printing Performance



Impact Strength



Tensile Strength



Bending Strength



Heat Resistance



HS PLA Marble



Marble-like effect | Easy to print | High speed

Flashforge's HS PLA Marble is a high-speed filament with a marble-like finish, available in black, blue, brown, and red. Compatible with all major FFF 3D printers, it is made from FDA-approved, food-contact compliant, and biodegradable materials.

Color

Standard Series



Printing Performance



Impact Strength



Tensile Strength



Bending Strength



Heat Resistance



PLA Silk



High gloss | Easy to print | High speed

Flashforge's PLA Silk is a high-gloss, easy-to-use PLA filament that creates models with a silk-like, glossy finish. It offers excellent layer adhesion and minimal warping, though glossiness may decrease at high speeds.

Color

Standard Series



Printing Performance



Impact Strength



Tensile Strength



Bending Strength



Heat Resistance



PLA Silk Dual Color



Silky sheen | Two-tone effect | Easy to use

Flashforge's PLA Silk Dual Color is a high-gloss, easy-to-use PLA Silk filament that displays two different colors in its cross-section. It is suitable for all major FFF 3D printers.

Color

Standard Series



Printing Performance



Impact Strength



Tensile Strength



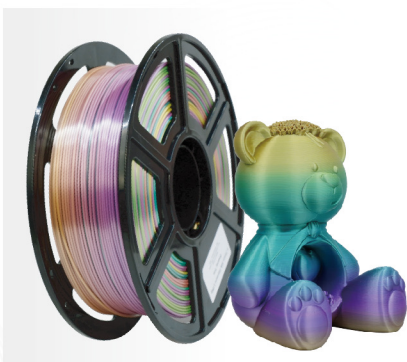
Bending Strength



Heat Resistance



PLA Silk Rainbow



Silky sheen | Rainbow gradient effect | Easy to use

Flashforge's PLA Silk Rainbow is a high-gloss, easy-to-use PLA Silk filament that features multiple colors. It is suitable for all major FFF 3D printers.

Color

Standard Series



Printing Performance



Impact Strength



Tensile Strength



Bending Strength



Heat Resistance



PLA Matte



Matte texture | Easy to print | Less layer lines

Flashforge's PLA Matte is a reliable, easy-to-use filament that provides a matte finish and reduced layer lines.

Suitable for various major 3D printers, it offers improved tenacity and fluidity while maintaining the ease of standard PLA.

Color

Standard Series



Dream Series



Printing Performance



Impact Strength



Tensile Strength



Bending Strength



Heat Resistance



PLA Galaxy



Sparkle | Easy to print | Not visible layer lines

Flashforge's PLA Galaxy builds on standard PLA, suitable for all major 3D printers. It features silver sparkles for a starry effect, making layer lines less noticeable while retaining all the benefits of PLA filament.

Color

Standard Series



Printing Performance



Impact Strength



Tensile Strength



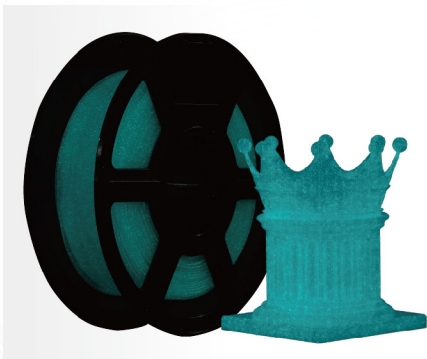
Bending Strength



Heat Resistance



PLA Galaxy Luminous



Glow-in-the-dark sparkle | Easy to print

Flashforge's PLA Galaxy Luminous enhances standard PLA with glow-in-the-dark sparkles, suitable for all major 3D printers.

It retains all the benefits of PLA while adding a dazzling starry effect in the dark.

Color

Standard Series



Printing Performance



Impact Strength



Tensile Strength



Bending Strength



Heat Resistance



PLA Color Change



Temperature-sensitive color change | Environmentally friendly | Easy to use

Flashforge's PLA Color Change is a temperature-sensitive filament that shifts color based on temperature, showing darker below 33°C and lighter above 33°C. It is FDA-approved, food-contact compliant, and biodegradable.

Color

Standard Series



Printing Performance



Impact Strength



Tensile Strength



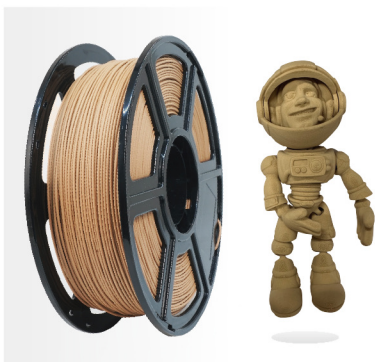
Bending Strength



Heat Resistance



PLA Wood



Easy to print | Wood-like effect | Low density

Flashforge's PLA Wood is a filament with PLA and wood powder, suitable for all major FFF 3D printers. It reduces clogging, emits a burnt wood smell, and is made from fully biodegradable materials.

Color

Standard Series



Printing Performance



Impact Strength



Tensile Strength



Bending Strength



Heat Resistance



PLA Metal



Metallic texture | Easy to print

Flashforge's PLA Metal filament blends PLA with metal powder for a metallic finish. It reduces clogging with surface-activated metal powder and delivers impressive results with polishing.

Color

Standard Series



Printing Performance



Impact Strength



Tensile Strength



Bending Strength



Heat Resistance



ABS Matte



Matt | Heat-resistant | Good processability

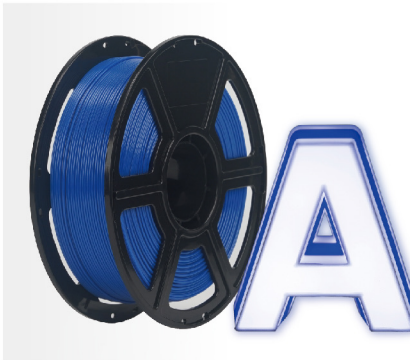
Flashforge's ABS Matte is a modified ABS filament with a low-gloss finish. It offers the durability of traditional ABS with reduced light reflection, making it ideal for aesthetically appealing and strong parts and prototypes.

Color

Standard Series



PLA-A (Advertisement)



Environmentally friendly | Safe | Easy to print

Flashforge's PLA-A is an easy-to-use filament for indoor advertising, ideal for luminous channel letters. Available in non-opaque and opaque types, it is made from FDA-approved, biodegradable materials.

Color

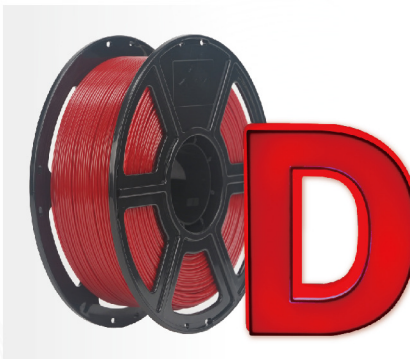
Opaque



Nonopaque



PETG-A (Advertisement)



Easy to print | Safe

Flashforge's PETG-A is an easy-to-use filament for outdoor advertising, offering excellent anti-aging and high heat resistance. It comes in non-opaque and opaque types and is made from FDA-approved materials.

Color

Opaque



Nonopaque



FLEXIBLE



Softness | Dimensional stability | High toughness

Flashforge's Flexible filament is a soft, high-gloss material for all major FFF 3D printers, ideal for direct drive extruders with 0.6mm or larger nozzles. It stretches over four times its original length and is made from FDA-approved, food-contact compliant, and biodegradable materials.

Color

Standard Series



Printing Performance



Impact Strength



Tensile Strength



Bending Strength



Heat Resistance



TPU 95A (ELASTIC)



High resilience | Dimensionally stable | High fluidity

Flashforge's TPU 95A filament is a soft, high-tenacity material for direct drive FFF 3D printers, recommended for 0.6mm nozzles or larger. With a Shore hardness of 95A, it stretches over three times its original length and offers excellent wear, chemical, and weather resistance.

Color

Standard Series



Printing Performance



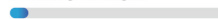
Impact Strength



Tensile Strength



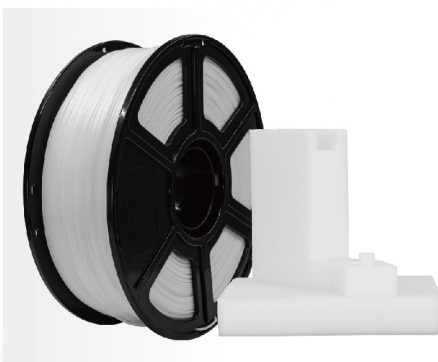
Bending Strength



Heat Resistance



HIPS



High toughness | High impact resistance | Support material

Flashforge's HIPS is a cost-effective filament with excellent tenacity and temperature resistance. It offers smooth extrusion with minimal clogging and a smooth surface, and can be used as a support material in limonene, making it a good alternative to ABS.

Color

Standard Series



Printing Performance



Impact Strength



Tensile Strength



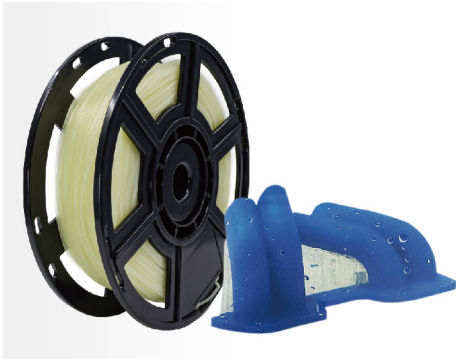
Bending Strength



Heat Resistance



PVA



Soluble in water | Easy to print | Dimensionally stable

Flashforge's PVA is a water-soluble filament made from polyvinyl alcohol, offering improved printing performance and fluidity.

It serves as a support material for various filaments and dissolves completely in water within 75 minutes at room temperature.

Color

Standard Series



Printing Performance



Impact Strength



Tensile Strength



Bending Strength



Heat Resistance



PA1010



High transparency | High toughness | Low water absorption

Flashforge's PA1010 is a highly transparent filament with over 88% light transmittance.

Made from PA1010 nylon, it features low water absorption, high dimensional stability, and excellent temperature resistance.

Color

Standard Series



Printing Performance



Impact Strength



Tensile Strength



Bending Strength



Heat Resistance



PA6/66



High strength | Excellent impact resistance | Chemical corrosion resistance

Flashforge's PA is an affordable, high-performance filament suitable for various 3D printers.

Made from PA6 and PA66 copolymer, it offers improved shrinkage and fluidity, with excellent tenacity, wear resistance, and oil resistance, making it ideal for engineering applications.

Color

Standard Series



Printing Performance



Impact Strength



Tensile Strength



Bending Strength



Heat Resistance



PC



High toughness | High strength | Heat-resistant and light-transmitting | Good flame retardancy and insulation

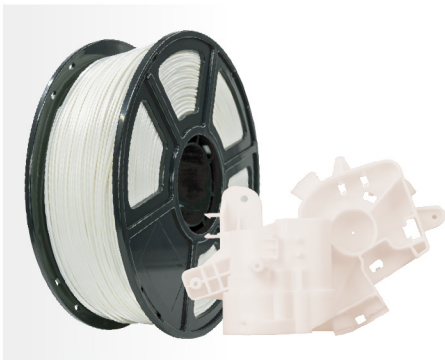
Flashforge's PC is an affordable and reliable filament made from food-grade PC without bisphenol A. It offers improved shrinkage and fluidity, minimal warping, good layer adhesion, and excellent heat resistance for use in environments above 100°C.

Color

Standard Series



PC-ABS



High toughness | High strength | Impact resistance | Thermal stability | High surface finish

Flashforge's PC-ABS is a filament combining PC and ABS alloy materials for high impact strength and superior heat resistance. It features the impact resistance and temperature durability of PC with the electrochemical properties of ABS.

Color

Standard Series



PLA-CF



Carbon fiber reinforced | High strength | High stiffness

Flashforge's PLA-CF is a filament made from PLA and carbon fiber, suitable for major FFF 3D printers. It maintains the ease of use of standard PLA while offering improved strength and mechanical properties due to the added carbon fiber.

Color

Standard Series



PETG-CF



Dimensionally stable | Smooth hidden grain | High toughness and impact resistance

Flashforge's PETG-CF combines PETG and carbon fiber for high strength and wear resistance. It reduces shrinkage and produces stable, smooth models with a common hot bed.

Color

Standard Series



Printing Performance



Impact Strength



Tensile Strength



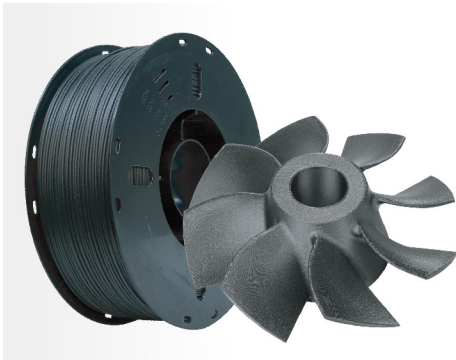
Bending Strength



Heat Resistance



ASA-CF



High strength | Temperature resistance | Weather resistance

Flashforge's ASA-CF is a high-performance filament with ASA and carbon fiber, offering high strength, low shrinkage, and weather resistance. It produces stable, well-adhered models with a smooth surface using just a common hot bed.

Color

Standard Series



Printing Performance



Impact Strength



Tensile Strength



Bending Strength



Heat Resistance



PET-CF



High stiffness | Low warpage | High temperature resistance

Flashforge's PET-CF, made with 10% carbon fiber, offers high rigidity and temperature resistance up to 205°C. It prints well on a common hot bed and is best used with a hardened steel nozzle.

Color

Standard Series



Printing Performance



Impact Strength



Tensile Strength



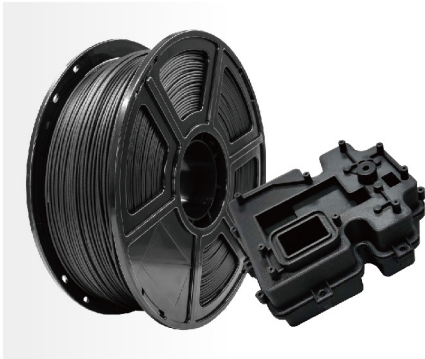
Bending Strength



Heat Resistance



PA12-CF



High stiffness | High strength | No warping

Flashforge's PA-CF is a high-performance filament for industrial use, featuring high strength, wear resistance, and temperature resistance up to 150°C.

It offers low water absorption and reduced shrinkage, producing stable, smooth models with a common hot bed.

Color

Standard Series



Printing Performance



Impact Strength



Tensile Strength



Bending Strength



Heat Resistance



PPA-CF



Excellent mechanical properties | Lightweight | High creep resistance

Flashforge's PPA-CF, with 15% carbon fiber, is a high-temperature filament with a 220°C softening point.

It offers high strength, low shrinkage, and prints well on a common hot bed with a hardened steel nozzle.

Color

Standard Series



Printing Performance



Impact Strength



Tensile Strength



Bending Strength



Heat Resistance



PPS-CF



High mechanical strength and rigidity | Low moisture absorption | High temperature resistance

Flashforge's PPS-CF, with 10% carbon fiber, offers high temperature resistance, low shrinkage, and flame retardant properties.

It produces rigid, impact-resistant models with a metallic texture and requires a hardened steel nozzle.

Color

Standard Series



Printing Performance



Impact Strength



Tensile Strength



Bending Strength



Heat Resistance





Zhejiang Flashforge 3D Technology Co., Ltd.

- Tel: +86 579 82273989
- Suggestions and Complaints: mkt2@flashforge.com



Orthodontic/Restorative Model Resin1.0




Model 1.0 Yellow

Used for printing high-temp, high-pressure resistant orthodontic models and removable restoration models. High precision, excellent detail reproduction and heat resistance for minimal deformation under pressure.

Color




Flexural Modulus
1200MPa


Flexural Strength
52MPa


Hardness
84 Shore D


Tensile Strength
43MPa

Orthodontic/Restorative Model Resin1.0



Model 1.0 Gray

Used for printing fixed restoration models. Ensure detailed and smooth results with high precision, excellent wear resistance and easy cleaning, boosting model stability.

Color




Flexural Modulus
1250MPa


Flexural Strength
50MPa


Hardness
85 Shore D


Tensile Strength
42MPa

Orthodontic/Restorative Model Resin2.0



Model 2.0 Yellow

High-temp dental resin with high precision, high surface hardness and low viscosity, which improves quality and post-processing, while low shrinkage and high-speed printing capability make it ideal for orthodontic and restoration models.

Color




Flexural Modulus
2527-2714MPa


Flexural Strength
92.8-104MPa


Hardness
84 Shore D


Tensile Strength
64.0-74.7MPa




Surgical Guide Resin



FHD1500(SG)

Used for printing surgical guides, implant locators, retainers, occlusal splints, and occlusal pads. Its high precision, excellent tensile strength, and high transparency enable better positioning and guiding.

 Flexural Modulus
970MPa

 Flexural Strength
45MPa

 Hardness
80 Shore D

 Tensile Strength
38MPa

IBT Flexible Resin

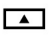


FHD1500(IBT)

Used for printing indirect bonding trays. It is highly tough and tear-resistant, allowing for precise positioning of brackets and easy placement and removal.

 Flexural Modulus
2691MPa

 Flexural Strength
105MPa

 Hardness
86 Shore D

 Tensile Strength
50MPa

Temporary Crown & Bridge Resin

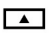



CR01

Used for printing temporary crowns and bridges. It offers high wear resistance, strong toughness, realistic color, and a surface that's easy to polish and color, to better fit in with adjacent teeth.

 Flexural Modulus
1689.46MPa

 Flexural Strength
62.11MPa

 Hardness
88 HD

 Tensile Strength
52.04MPa



Gingiva Mask Resin



Gingiva Mask

Used for printing simulated gingival tissue around implants. It offers high toughness, tear resistance, excellent elasticity, and a look and feel similar to natural gingival tissue, aiding in accurate representation.

			
Elongation at Break 82.68%	Tear Strength 2.15 kN/m	Hardness 32 HA	Tensile Strength 0.70MPa

Castable Wax Resin



FHD1200

Used for printing wax patterns for crowns, bridges, veneers, inlays, brackets, and various jewelry pieces. It offers high precision and clean burnout. With special investment materials, it can finely reproduce surface textures.

			
Flexural Modulus 1450MPa	Flexural Strength 50MPa	Hardness 80 Shore D	Tensile Strength 56MPa





Zhejiang Flashforge 3D Technology Co., Ltd.

- Tel: +86 579 82273989
- Suggestions and Complaints: mkt2@flashforge.com





Follow Us

Zhejiang Flashforge 3D Technology Co., Ltd.

Address: 2nd Floor, Building B, Huaxing Development Building,
No.328 Wen'er Road, Xihu District, Hangzhou City, Zhejiang Province

Service Hotline: +86 579 82273989

After-sales: support@flashforge.com

Suggestions and Complaints: mkt2@flashforge.com

Website: enterprise.flashforge.com

