

The Invisible Impact

of Gray Work

What lies beneath the surface of the modern way we work?

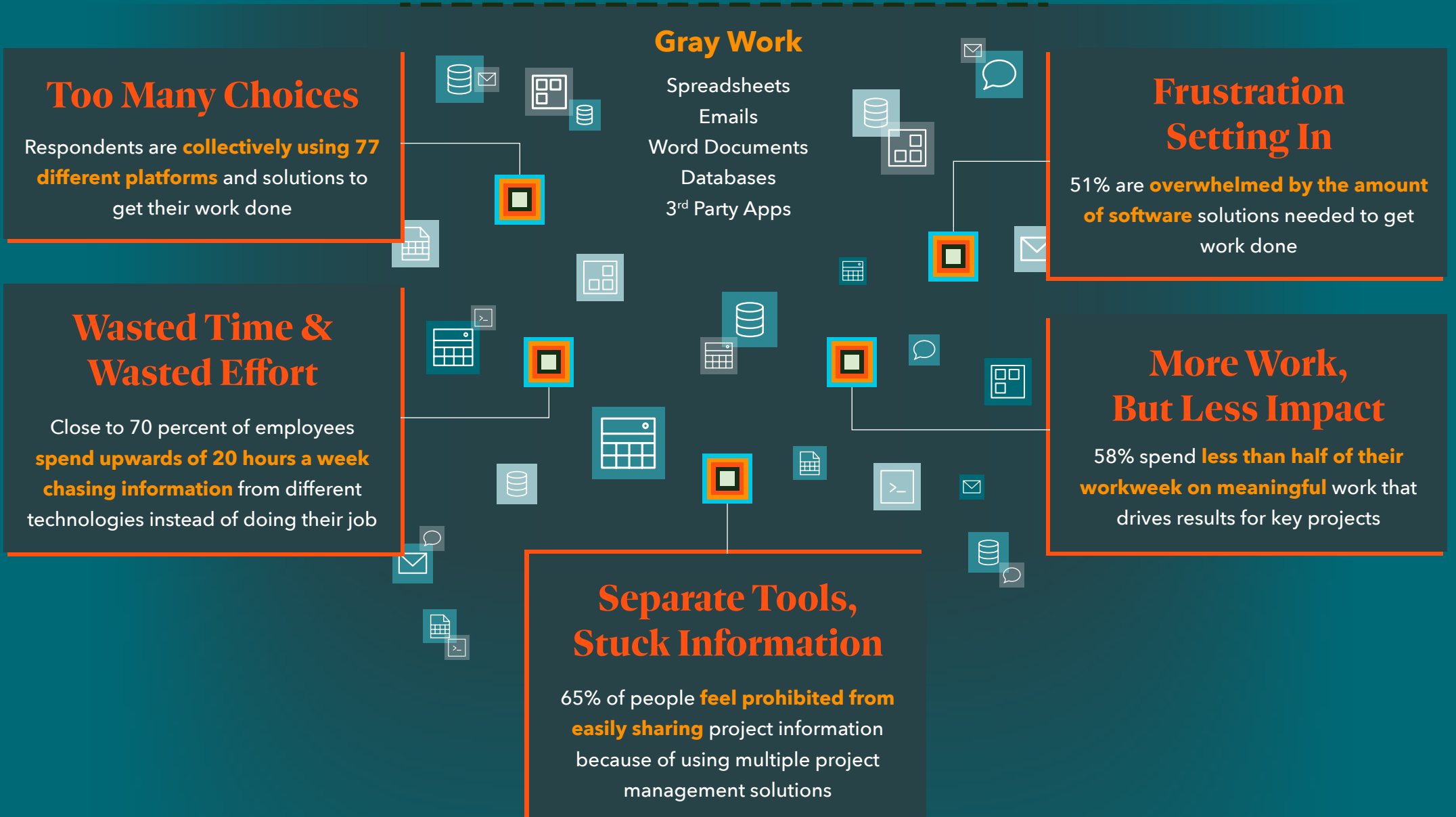
Over 1,000 technology leaders shared thoughts on their current state of work and how standard technology solutions don't support the dynamic way teams need to work: in real-time, across functions, in highly complex data environments.

This leads to "gray work," the slow, manual way our teams get by because their technology doesn't work for them. It bogs down your people, makes work harder, and impacts revenue.

The standard tools we are given



The way work actually gets done



Quickbase surveyed 1,032 people in March-April 2023 who have software purchasing authority or influence across the United States. These decision makers spanned across industries, and had job functions including project management, business operations, IT or engineering, digital transformation, or executive/general management responsibilities.