

A Survey of MRI-based Medical Image Analysis for Brain Tumor Studies

Stefan Bauer¹‡, Roland Wiest², Lutz-P. Nolte¹, and Mauricio Reyes¹

¹ Institute for Surgical Technology and Biomechanics, University of Bern, Switzerland

² SCAN, University Institute of Diagnostic and Interventional Neuroradiology, Inselspital, Bern University Hospital, Switzerland

Abstract. MRI-based medical image analysis for brain tumor studies is gaining attention in recent times due to an increased need for efficient and objective evaluation of large amounts of data. While the pioneering approaches applying automated methods for analysis of brain tumor images date back almost two decades, the current methods are becoming more mature and coming closer to routine clinical application. This review article aims at providing a comprehensive overview by giving a brief introduction to brain tumors and imaging of brain tumors first. Then we review the state of the art in segmentation, registration and modeling related to tumor-bearing brain images with a focus on gliomas. The objective in segmentation is outlining the tumor including its sub-compartments and surrounding tissues, while the main challenge in registration and modeling is the handling of morphological changes caused by the tumor. The qualities of different approaches are discussed with a focus on methods that can be applied on standard clinical imaging protocols. Finally, a critical assessment of the current state is performed and future developments and trends are addressed, giving special attention to recent developments in radiological tumor assessment guidelines.

Submitted to: *Phys. Med. Biol.*

‡ To whom correspondence should be addressed (stefan.bauer@istb.unibe.ch)

1. Introduction

This review is intended to give an overview of the state of the art in MRI-based medical image analysis for brain tumor studies. It also provides a brief background on brain tumors in general and non-invasive imaging of brain tumors in order to give a comprehensive insight into the field.

1.1. Brain Tumors

With a prevalence of less than 1‰ in the western population, brain tumors are not very common, however they are among the most fatal cancers (DeAngelis (2001)). A recent study estimated the US incidence rate for primary tumors of the brain or nervous system to be around 25 per 100,000 adults with approximately one-third of the tumors being malignant and the rest either benign or borderline malignant (Kohler et al. (2011)). The word “tumor” is of latin origin and means swelling. Today, it is frequently associated with a neoplasm, which is caused by uncontrolled cell proliferation.

Brain tumors can be classified according to their origin or degree of aggressiveness. Primary brain tumors arise in the brain, while metastatic brain tumors frequently originate from other parts of the body. The most widely used grading scheme today has been introduced by the World Health Organization (WHO) (Kleihues et al. (1993)). It classifies brain tumors into grades I to IV with increasing aggressiveness.

Gliomas are the most frequent primary brain tumors in adults and account for 70% of adult malignant primary brain tumors. They arise from glial cells and they can be classified into the four WHO grades, where high-grade gliomas are of grade III or IV. Grade I and grade II tumors may be considered as semi-malignant tumors that carry a better prognosis, while grade III and grade IV tumors are malignant tumors that almost certainly lead to a subject’s death. The WHO grade IV gliomas are also called glioblastoma multiforme (GBM). They are the most common malignant primary brain tumors in humans, exhibiting very rapid growth (Deimling (2009)). These tumors are infiltrative and spread mostly along the white matter fiber tracts (Giese et al. (2003)). They form abnormal vessels and exhibit a necrotic core. This and the surrounding edema leads to a mass-effect, which they exert on the healthy tissues of the brain. Regarding tumor angiogenesis, current understanding is based on the fact that low-grade gliomas are moderately vascularized tumors, whereas high-grade gliomas show prominent microvascular proliferations and areas of high vascular density (Plate and Risau (1995)). Average survival time for GBM is one year (Krex et al. (2007)). Treatment options for gliomas include surgery, radiation therapy or chemotherapy, including combinations of all these (DeAngelis (2001)).

Meningiomas are the most common extra-axial intracranial neoplasms. They account for 15-20% of intracranial neoplasms. They are non-glial neoplasms that originate from the arachnoid cap cells of the meninges. Treatment is usually performed by surgery and/or radiation therapy (Greenberg et al. (1999)).

Primary brain tumors must be differentiated from metastatic brain tumors that

originate most frequently from lung, breast, melanoma, renal and colon cancers and account for approximately 40% of intracranial neoplasms.

Due to clinical relevance and the amount of prior work in MRI-based medical image processing, the focus of this article will be on gliomas.

1.2. Imaging of Brain Tumors

The standard technique for brain tumor diagnosis is magnetic resonance imaging (MRI) (DeAngelis (2001); Wen et al. (2010)). MRI is a non-invasive technique, which provides good soft tissue contrast (Liang and Lauterbur (2000)) and is widely available in clinics. It is used in combination with other imaging modalities, such as computed tomography (CT), Positron Emission Tomography (PET) and Magnetic Resonance Spectroscopy (MRS) to provide the most exact information about tumor morphology and metabolism. Especially PET imaging can provide additional information (Chen (2007)), however so far MRI remains the accepted standard and therefore we will focus on MRI-based methods.

MRI makes it possible to produce markedly different types of tissue contrast by varying excitation and repetition times, which makes it a very versatile tool for imaging different structures of interest. Due to the nature and appearance of brain tumors, one MRI sequence is not sufficient to fully segment the tumor including all its subregions. In current clinical routine, different MRI sequences are employed for diagnosis and delineation of tumor compartments (Drevelgas and Papanikolaou (2011)). These sequences include T_1 -weighted MRI (T_1), T_1 -weighted MRI with contrast enhancement (T_{1c}), T_2 -weighted MRI (T_2) and T_2 -weighted MRI with fluid attenuated inversion recovery (T_{2FLAIR}), however acquisition parameters of these modalities are not standardized. Patients with gliomas are usually examined by the previously described MR imaging protocols according to the RANO guidelines with a slice thickness of ≤ 5 mm without a gap between the slices (Pope and Hessel (2011)). For volumetry, high-resolution 3D volume images are performed, including at least contrast-enhanced T_1 -weighted images with isotropic resolution. Figure 1 shows an axial slice of the four standard sequences for a glioma patient including manually drawn tumor regions.

T_1 -weighting is the most commonly used sequence for structural analysis, it also allows for an easy annotation of the healthy tissues. In T_1 -weighted contrast-enhanced images (Gadolinium-DTPA), the tumor borders appear brighter because the contrast agent accumulates there due to the disruption of the blood-brain barrier in the proliferative tumor region. In this sequence, the necrotic and the active tumor region can be distinguished easily. In T_2 -weighted MRI, the edema region, which surrounds the tumor appears bright. T_{2FLAIR} (FLAIR) is a special sequence, which helps in separating the edema region from the cerebrospinal fluid (CSF) because the free water signal is suppressed. The radiological definition of the tumor margins in the clinical context are often manually determined by the radiologist on the T_2 and post-gadolinium T_1

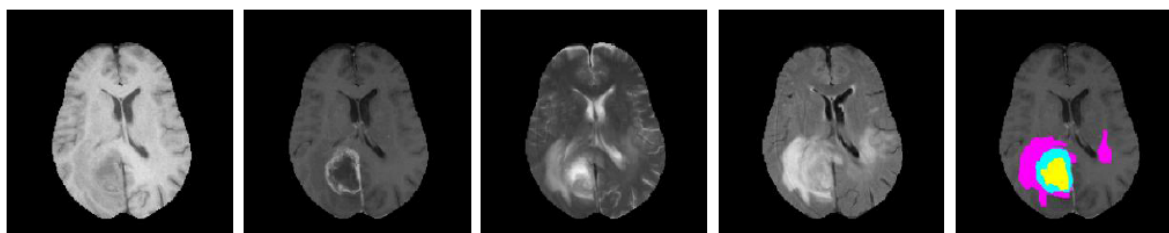


Figure 1. One axial slice of an MR image of a high-grade glioma patient. From left to right: T_1 -weighted image, T_1 -weighted image with contrast enhancement, T_2 -weighted image, T_{2FLAIR} -weighted image and manual segmentation into necrotic (yellow), active (green), edema (pink) tumor compartments. Necrosis and active tumor region were segmented based on the T_1 -weighted image with contrast enhancement, whereas the edema region was segmented based on the registered T_{2FLAIR} -weighted image.

images by thresholding boundaries between T_2 hyperintense / T_1 contrast-enhanced lesions and the surrounding healthy tissue to define the outer margins of a tumor. Clinical measurements of the tumor size traditionally incorporate either the product of the major and minor axis (2D measures) or of the three main axes of a tumor (3D measures).

Despite all the advantages that non-invasive imaging offers, it should be noted that a final diagnosis can only be made after biopsy and histology. It must also be emphasized that in gliomas, in contrast to metastatic brain tumors, the imageable component of the tumor is only part of the complete extent of the tumor. The imageable component and physiological information of the tumor depends on the tumor cell distribution and the image modality (Kelly et al. (1987), Tovi (1993)).

1.3. Image Analysis for Brain Tumors

This review is focused on image analysis for brain tumor studies. Image analysis deals with automatic or semi-automatic methods to help interpret the acquired images. Due to the large amount of data, that is currently being generated in the clinics, it is not possible to manually annotate and segment the data in a reasonable time. Usually, the domain of medical image analysis is divided into segmentation and registration, as well as into several further areas like enhancement, visualization, quantification and modeling (Bankman (2008)). For brain tumor studies, segmentation, registration and modeling appear to be the most important and the most challenging, so the remainder of this article focuses on these aspects.

Image segmentation (Pham et al. (2000)) aims at partitioning an image into several segments. These segments can be chosen according to structures of interest, tissue types, functional areas, etc. Balafar et al. (2010) presented a recent review targeted at brain segmentation specifically. Image registration (Maintz and Viergever (1998)) aims at aligning two different images in a common reference space. This is especially important for aligning images taken at different points in time during longitudinal studies or for aligning images from different modalities taken from the same patient, but also for brain

morphometry. Klein et al. (2009) compared non-linear algorithms for brain registration specifically. Finally, image-based modeling and simulation (Neal and Kerckhoffs (2010)) can help in disease understanding, treatment planning and decision making.

The primary use of MRI-based medical image analysis for brain tumor studies is in diagnosis, patient monitoring and treatment planning, but it could also be useful in clinical trials. Segmentation is crucial for monitoring of tumor growth or shrinkage in patients during therapy, for tumor volume measurements and it also plays an important role in surgical planning or radiotherapy planning, where not only the tumor has to be outlined, but also surrounding healthy structures are of interest. In current clinical practice, segmentation is usually still done manually, which is time-consuming and tedious for the radiologists and is also of limited use for an objective quantitative analysis. Concrete application areas for registration include multi-modal and longitudinal alignment of intra-patient images, but also aligning pre-, intra- and post-operative images as well as deformable registration for atlas-based segmentation or position mapping of gliomas for statistical analysis.

Although high-grade gliomas are not the most common cancers, they are among the most deadly. Novel therapies have improved patients' prognosis and novel clinical trial designs have gained in importance to further investigate the response of gliomas to different treatment regimens. A most accurate description of changes in tumor size and physiology is therefore mandatory. For many years now, treatment response of gliomas has been evaluated by MR and CT imaging; and a set of guidelines, usually referred to as the Macdonald criteria (Macdonald et al. (1990)) is available to monitor the assessment of tumor response after treatment. These criteria include changes in tumor size and new or increasing enhancement. However, this approach carries some important limitations (Clarke and Chang (2009)). Although the Macdonald criteria represented an important step in neuro-oncology research, it is now clear that evaluation of gadolinium enhancement alone is not adequate to characterize tumor growth or response. The RANO (Response Assessment in Neuro-Oncology) working group has defined novel criteria for tumor progression dependent on measurable or non-measurable lesions in at least two directions (Wen et al. (2010)). Automatic 3-D volumetric assessment of gliomas would offer the next important step forward to better understand tumor dynamics and response to treatment.

A previous review of the field was done by Angelini et al. (2007). In the meantime however, there has been significant progress, with the most important methods having been developed after 2007, mostly due to the rapid advancements in machine learning (Wang and Summers (2012)). Therefore, this review article aims at providing an update on the state of the art in image analysis for brain tumor studies.

The methods presented here have been collected mostly from Pubmed and Google scholar. We included more than 150 journal papers and conference papers from the most important conferences in the field (MedIA, IEEE TMI, NeuroImage, MRI, MRM, JMRI, PMB; MICCAI, IPMI, IEEE ISBI; and others). For the time before 2007, we included only the historically most relevant contributions, for the rest we refer to Angelini et al.

(2007).

The remainder of this review article is structured as follows: in the methods & results section (section 2), we present the different approaches and briefly summarize their results. The section is subdivided into methods for evaluation of accuracy and validation (2.1), segmentation (2.2), registration (2.3) and integrated approaches (2.4). Within each subsection we tried to group related methods together. Finally, in the discussion & outlook section (section 3) we review the state of the art in general, compare it to the clinical requirements and conclude about the applicability of the current methods, before we give an outlook on possible future directions and trends.

2. Methods & Results

2.1. Evaluation and Validation Methods

Validation and comparison against the state of the art is crucial for any newly developed method. Therefore, before diving into the presentation of the different approaches we would like to briefly cover the possibilities and challenges for evaluating and validating methods in brain tumor image analysis.

It would be optimal to compare any method against the real case. However, this is a big challenge in this field, if not impossible. In lack of a well-accepted ground-truth, the current gold standard for evaluation is to compare with manual segmentations by an expert. However, this is an extremely time-consuming and tedious task, additionally it is not objective. Mazzara et al. (2004) reported intra-rater volume variabilities of $20\% \pm 15\%$ and inter-rater volume variabilities of $28\% \pm 12\%$ for manual segmentations of brain tumor images. Weltens et al. (2001) found even larger values for inter-observer variability. One way to overcome this problem would be to use an algorithm that combines several expert segmentations in an optimal way like STAPLE (Warfield et al. (2004)). This method was applied for the evaluation of brain tumor segmentations by Archip et al. (2007b), however in most cases there are not enough expert segmentations available for using that method. Recently, Xu et al. (2012) suggested to use web-based collaborative manual tumor labeling by a large number of briefly trained non-experts to address this problem and they reported encouraging results. A more subjective, but occasionally used way is to employ a semi-automatic segmentation with a different well-accepted method as an intermediate result (e.g. Kikinis and Pieper (2011); Gao et al. (2012); Egger et al. (2013)), which is manually corrected by a human expert where necessary. This approach still lacks in objectivity, but it alleviates the burden from the clinician to spend a large amount of time for segmentation.

Another possibility for a first sanity check is to assess results on a synthetic dataset including ground-truth. Although synthetic data lacks important characteristics of real images, it has been used by many groups for initially assessing both segmentation and registration methods on healthy datasets with the BrainWeb phantoms (Cocosco et al. (1997)). For brain tumor studies, Prastawa et al. (2009) made a similar attempt to

provide simulated multi-sequence tumor image data including an objective ground truth, which was also based on the BrainWeb phantom and combined with a well-defined and accepted tumor growth model.

The most common way to quantitatively evaluate segmentation or registration results is to calculate the overlap with the ground truth. Usually, Dice similarity coefficient (DSC) or Jaccard coefficient (JC) are used (Crum et al. (2006)). They can range from 0 to 1 with 0 indicating no overlap and 1 indicating perfect overlap. Other possibilities for registration evaluation include manual landmark definition and calculation of landmark errors or surface distances. For a more qualitative assessment, checkerboard images can be shown or the outline of a structure can be analyzed visually. Zou et al. (2004) compared the three different validation metrics: area under the receiver operating characteristics (ROC) curve, mutual information (MI) and Dice similarity coefficient (DSC) for probabilistic brain tumor segmentation. They concluded that for overall classification accuracy the area under the ROC curve should be used, when interested in sensitivity to changes in tumor size MI is the metric of choice and for spatial alignment evaluation the Dice coefficient is best.

In the lack of a brain tumor database with ground-truth segmentations, that is available to a broad community of clinicians and researchers, so far most authors validated their algorithms on a limited number of cases from their own data. This makes it difficult to compare the performance of different methods against each other in an unbiased way. Therefore, and due to the different metrics used, the accuracy and speed of the individual methods, which have been collected from the respective publications, can not be directly compared with each other. Until recently, the only data available, which could serve such a purpose of general comparison, was the synthetic data of Prastawa et al. (2009), but so far only few groups tested their methods on these images. For the related topic of MS lesion segmentation from brain MRI (García-Lorenzo et al. (2013)), an open database has been available for some time (Styner et al. (2008)). Such an open image database has long been missing for an objective comparison of brain tumor segmentation algorithms, however an effort in this direction has finally been undertaken by the BraTS challenge at MICCAI 2012 §.

2.2. Segmentation of Brain Tumor Images

Segmentation of tumor-bearing brain images is a challenging task for several reasons. Firstly, high-grade gliomas usually exhibit unclear and irregular boundaries with discontinuities. Contrast uptake and image acquisition time after contrast injection can vary, which changes tumor appearance significantly and it is debatable if and how the non-imageable component of the tumor should be handled by segmentation algorithms. Additionally, tumor subregions can only be separated when several modalities are combined, which requires accurate registration as a pre-processing step. Finally, clinical datasets are usually acquired in a highly anisotropic way, leading to a much higher intra-

§ <http://www2.imm.dtu.dk/projects/BRATS2012/>

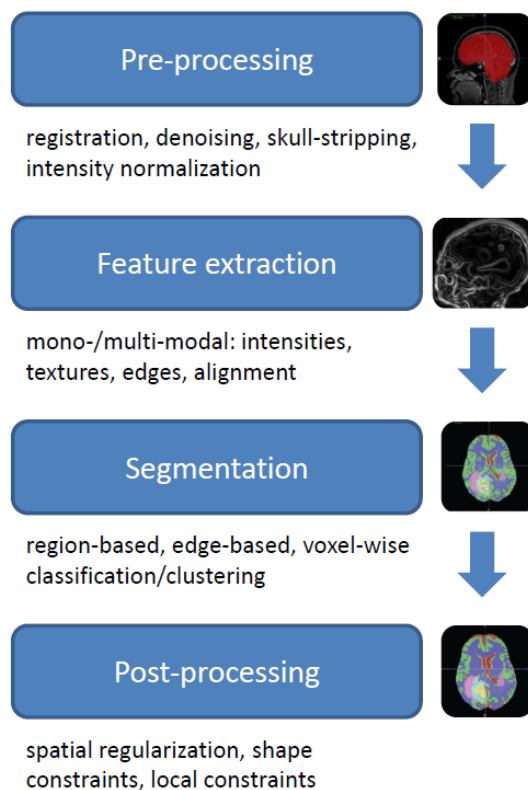


Figure 2. Illustration of the main blocks used for building up the segmentation pipeline of most algorithms included in this review.

slice resolution than inter-slice resolution. This causes problems with partial-volume effects for segmentation, but also registration and resampling of the different modalities in a common space of reference. A diagram illustrating the major steps during the segmentation pipeline of most algorithms is shown in figure 2. In the following, the different algorithms are discussed according to the major blocks of this pipeline.

2.2.1. Image Pre-processing Most algorithms rely on some kind of preprocessing for image preparation and image enhancement. Image denoising is a standard preprocessing task for MRI. Many approaches have been suggested, the most popular ones being based on anisotropic diffusion filtering (Weickert (1998)). Diaz et al. analyzed different denoising algorithms for the specific task of brain tumor segmentation (Diaz et al. (2011)). They concluded that, although image noise was reduced, many algorithms introduced artefacts which had a negative effect on segmentation.

Intensity normalization (Nyúl and Udupa (1999)) is a very critical task for MRI, especially when classification methods are used for segmentation. However, for tumor-bearing images, this is more challenging than for healthy images due to the confounding effects caused by the differences in tumor appearance. Ekin (2011) developed an intensity-normalization technique for MRI, which they claimed was robust

to pathologies. Most approaches employ a bias-field correction (Vovk et al. (2007)) before the segmentation is applied, in order to compensate for the effect of magnetic field inhomogeneities during image acquisition.

When operating on multi-modal images, pre-processing always includes registration of all modalities in a common space of reference. In most cases, this is performed using a linear transformation model with mutual information similarity metric (Mang et al. (2008)) and resampling in order to ensure voxel-to-voxel correspondence across all modalities.

Most approaches for brain tumor segmentation rely on a skull-stripping step (Fennema-Notestine et al. (2006)) before the actual segmentation is performed. Speier et al. (2011) recently presented a skull-stripping method dedicated to glioma images, which was able to handle images containing resection cavities.

2.2.2. Image Features for Segmentation Algorithms The features used for segmentation of brain tumors largely depend on the type of tumor and its grade because different tumor types and grades can vary a lot in appearance (e.g. contrast uptake, shape, regularity, location, etc.). Additionally, feature selection will also depend on the sub-compartment of the tumor, which is to be segmented.

The most common feature used for brain tumor segmentation are the image intensities. This is based on the assumption that different tissues have different graylevels. Another type of features frequently used are local image textures because it has been observed that different tumor areas exhibit different textural patterns (Kassner and Thornhill (2010)). Textures can be computed according to different strategies (Tuceryan and Jain (1998)). Alignment-based features make use of spatial prior knowledge, which is often encoded by registration of a standard atlas to the patient image or by making use of symmetries between left and right brain hemisphere. Intensity gradients or edge-based features can be used for evolving a contour towards the tumor border. Recently, context-aware features modeling mid- or long-range spatial contexts similar to Lepetit et al. (2005) and Shotton et al. (2011) are becoming more popular.

Depending on the data available, all these features can either be computed from one single modality or from multi-modal images. Researchers have also combined different features from different modalities in order to improve their segmentation results.

For the task of brain tumor image analysis, Schmidt et al. (2005) explored different features for voxel-based classification and concluded that combining textural and alignment-based features allowed for substantial performance increases. Ahmed et al. (2011) investigated the efficacy of different image features and feature fusion strategies for pediatric brain tumor images. They argued that in multi-modal images, texture features had advantages over intensity or shape features.

2.2.3. Segmentation Algorithms Based on the previous section, we categorize segmentation algorithms according to the features they use. Therefore, we distinguish region- or edge-based methods, which mostly rely on deformable models, and

Table 1. Segmentation methods for brain tumor images using deformable methods or region-based methods. Evaluation was performed on different datasets, empty cells indicate no reported information. Dim stands for dimensionality, S for supervision. SA means semi-automatic, FA fully-automatic. Type describes the tumor type, which can be: G - glioma, HGG - high grade glioma, LGG - low grade glioma, M - meningioma, Met - metastasis.

| Authors | Modalities | Method | Accuracy | Speed | Dim | S | Type |
|-----------------------------|--|---|-------------------------|--------|------|----|------|
| Edge-based methods | | | | | | | |
| Wang et al. (2009) | T ₁ | Fluid vector flow | 0.6 (Tanimoto) | 5s | 2D | SA | |
| Sachdeva et al. (2012) | T ₁ , T _{1c} , T ₂ | Content-based active contour model | 0.72-0.98 | | 2.5D | SA | G, M |
| Region-based methods | | | | | | | |
| Ho et al. (2002) | T ₁ , T _{1c} | Level-set evolution with region competition | 0.85-0.93 (Jaccard) | | 3D | FA | G, M |
| Rexilius et al. (2007) | T _{1c} , T ₂ , T _{2flair} | Multispectral histogram model adaptation for region-growing | 0.73 (Jaccard) | 10min | 3D | SA | G |
| Harati et al. (2011) | T _{1c} | Fuzzy connectedness | >0.9 (similarity index) | 2.5min | | FA | G, M |

classification or clustering methods, which make use of voxel-wise intensity and texture features. Many methods employ additional constraints for regularization, this is discussed in a separate section. Another group of methods is based on atlas-based segmentation. Atlas-based methods will be described later in sections 2.3 and 2.4 because the segmentation relies on registration methods.

Region- or Edge-based Methods

Deformable models make use of regional characteristics or edge detection in the images (McInerney and Terzopoulos (1996)). In most cases, a level-set is evolved towards the tumor boundary by searching for the largest gradient in the image or by employing region properties. Wang et al. (2009) employed a fluid vector flow model to evolve a contour towards the tumor boundary edge in T₁-weighted images. Sachdeva et al. (2012) made use of content-based intensity and texture patterns to evolve an active contour towards the tumor boundary in different MRI modalities.

Ho et al. (2002) derived a tumor probability map from the difference image between T₁ and T_{1c}, which formed the basis for the evolution of a region-competition level-set algorithm applied. Rexilius et al. (2007) initialized a region-growing algorithm with a tumor map, which was obtained from a multi-spectral histogram model adaptation. Harati et al. (2011) suggested a fuzzy-connectedness algorithm, which made use of region properties but had no spatial constraints. Seeding was automatically performed on T₁-weighted images with a so-called tumor detector matrix. Characteristics of each method are summarized in table 1.

Classification and Clustering

In fact, most of the segmentation algorithms proposed so far, are based on classification or clustering approaches. This is mostly owed to the fact that with these methods, multimodal datasets can be handled easily because they can operate on any chosen feature vector. In most cases, the features on which these algorithms

operate include voxel-wise intensities and frequently also local textures. The general idea is to decide for every single voxel individually, to which class it belongs based on its feature vector. Classification requires training data to learn a classification model, based on which new instances can be labeled. Clustering, on the other hand, works in an unsupervised way and groups data based on certain similarity criteria (Wang and Summers (2012)).

Clustering was introduced into the brain tumor segmentation community by Schad et al. (1993) who analyzed texture patterns of different tissues. Phillips et al. (1995) employed fuzzy c-means clustering and Vaidyanathan (1995) compared this to kNN-clustering for tumor volume determination during therapy on multispectral 2D image slices. Clark et al. (1998), from the same group, further developed this approach to incorporate knowledge-based techniques. Later, Fletcher-Heath et al. (2001) also combined fuzzy clustering with knowledge-based techniques for brain tumor segmentation from multi-sequence MRI.

Lately, there have been tremendous advances in developing more powerful discriminative classification methods and these new methods have also found their way into the field of medical image analysis. Cai et al. (2007) and later Verma et al. (2008) from the same group, used a high number of MRI modalities (DTI channels in addition to the conventional ones) to create voxel-wise intensity-based feature vectors, which they classified with support vector machines (SVM) (Schoelkopf and Smola (2002)). They were able to not only segment the healthy tissues, but also segment sub-compartments of healthy and tumor regions. Ruan et al. (2007) used a very similar approach based on SVMs, but with a lower number of modalities and they only segmented one tumor region. Later, they claimed that feature selection using kernel class separability, could slightly improve the results compared to their previous approach (Ruan et al. (2011)). Jensen and Schmainda (2009) explored different neural networks to detect brain tumor invasion from multi-parametric MRI (structural, diffusion and perfusion images). Kanaly et al. (2011) chose a simpler approach by thresholding the voxels of the difference image of pre- and post-contrast T_1 -weighted MRI after intensity normalization. Zikic et al. (2012) lately proposed a computationally efficient approach based on decision forest classification (Criminisi et al. (2011)) with context-aware features and an additional generative model as an input, which is able to identify tumor sub-compartments from multi-modal images (see figure 3). They claimed that context-aware features eliminate the need for a post-processing step imposing smoothness constraints by spatial regularization. Geremia et al. (2012) had the idea to generate synthetic tumor images, which can be used to train a discriminative regression forest algorithm using different groups of features. They argued that this approach allowed them not only to segment patient images, but also to estimate latent tumor cell densities. Characteristics of each method are summarized in table 2.

Classification and Clustering with Additional Constraints

It has been remarked that simple voxel-wise classification or clustering methods do

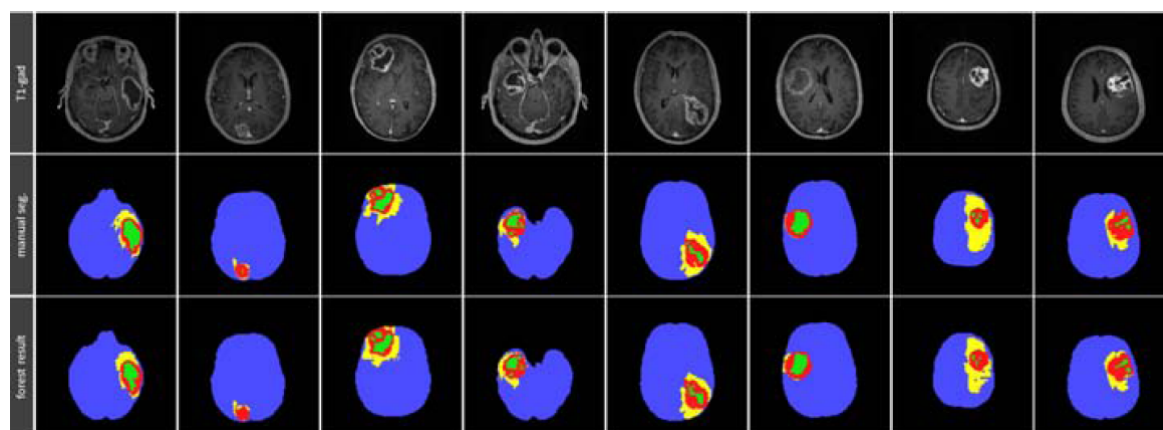


Figure 3. Segmentation results generated from multi-sequence 3D MR images, shown on T_{1c} -weighted axial slices of different patients. The second row shows the manually defined ground truth, the last row the results of a fully automatic algorithm, which used T_1 , T_{1c} , T_2 , T_{2flair} and DTI MRI sequences as an input. The pathologic tissues are separated into active, necrotic and edema compartments. Example from Zikic et al. (2012).

Table 2. Segmentation methods for brain tumor images using classification or clustering, grouped by different approaches. Evaluation was performed on different datasets, empty cells indicate no reported information. Dim stands for dimensionality, S for supervision. SA means semi-automatic, FA fully-automatic. Type describes the tumor type, which can be: G - glioma, HGG - high grade glioma, LGG - low grade glioma, M - meningioma, Met - metastasis.

| Authors | Modalities | Method | Accuracy | Speed | Dim | S | Type |
|---|---|---|---------------------------------|--------|------|--------|----------|
| Classification or clustering methods | | | | | | | |
| Schad et al. (1993) | T_1 , T_2 | Texture analysis and clustering | | | 2D | | HGG, Met |
| Phillips et al. (1995) | T_1 , T_2 , PD | Clustering | | 2-5min | 2D | | HGG |
| Vaidyanathan (1995) | T_1 , T_2 , PD | Clustering | | | | HGG, M | |
| Clark et al. (1998) | T_1 , T_2 , PD | Knowledge-based techniques | 0.69-0.99 (% match) | | 2D | FA | HGG |
| Fletcher-Heath et al. (2001) | T_1 , T_2 , PD | Fuzzy clustering + knowledge-based techniques | 0.53-0.91 (% match) | | 2.5D | FA | |
| Cai et al. (2007) | T_1 , T_{1c} , T_2 , T_{2flair} , DTI | Probabilistic segmentation based on multi-modality MRI | 0.73-0.98 (classification rate) | | 3D | FA | HGG |
| Ruan et al. (2007) | T_1 , T_2 , T_{2flair} , PD | SVM Classification | 0.99 (TP) | | 3D | FA | |
| Verma et al. (2008) | T_1 , T_{1c} , T_2 , T_{2flair} , DTI | Multiparametric tissue classification | 0.34-0.93 (classification rate) | | 3D | FA | HGG |
| Jensen and Schmainda (2009) | T_1 , T_{1c} , T_2 , T_{2flair} , DWI, DTI, DSC | Different classifiers on multiparametric MRI | 0.78-0.86 (overlap) | | 3D | SA | HGG, M |
| Ruan et al. (2011) | T_2 , T_{2flair} , PD | Image fusion for brain tumor follow-up | | 5min | 3D | FA | |
| Kanaly et al. (2011) | T_1 , T_{1c} | Difference image for volumetric tumor assessment | | | 3D | SA | |
| Zikic et al. (2012) | T_1 , T_{1c} , T_2 , T_{2flair} , DTI | Decision forests for tissue-specific segmentation | 0.7-0.9 (Dice) | 2-3min | 3D | FA | HGG |
| Geremia et al. (2012) | T_1 , T_{1c} , T_2 , T_{2flair} | Tumor cell density estimation for discriminative segmentation | 0.55-0.83 (Dice) | | 3D | FA | G |

not make use of the complete information contained in an image. Therefore, there have been numerous attempts to use additional information to further improve the segmentation result by adding additional constraints, which can be based on some form of neighborhood regularization or on imposing shape or localization constraints for the tumor. Neighborhood constraints are often imposed using a random field regularization method, while shape constraints are mostly handled by deformable models. Atlases can be used to restrict the tumor location and also for generative classification models.

Atlases have been used by a number of methods to incorporate spatial prior knowledge into the classification task. Kaus et al. (2001) suggested to use a brain atlas for guiding a kNN-classifier in their adaptive template-moderated classification algorithm. Other researchers used atlases not only to impose spatial constraints, but also to provide probabilistic information about the tissue model. Moon et al. (2002) and also Prastawa et al. (2003) employed a probabilistic tissue model and used an expectation maximization (EM) method (Dempster (1977)), which segmented tumor images by modifying an atlas with patient-specific information about tumor location from different MRI modalities. Later, Prastawa et al. (2004) extended this to work on mono-modal images. Menze et al. (2010) combined a healthy atlas with a latent tumor atlas to segment brain tumors from multi-sequence images using a generative probabilistic model and spatial regularization. Weizman et al. (2012) used localization based on an atlas for their multimodal segmentation of optic pathway gliomas, which performed classification with a probabilistic tissue model.

Deformable models (McInerney and Terzopoulos (1996)) can be used to impose shape constraints after previous tissue classification. Cobzas et al. (2007) and Cobzas and Schmidt (2009) combined tissue classification using a high-dimensional feature set with level-set evolution. Popuri et al. (2012) added a Dirichlet prior to the previous approach to better disambiguate tumor from healthy tissues. Khotanlou et al. (2009) combined fuzzy clustering and brain symmetry features with level-set evolution. Hamamci et al. (2011) introduced the tumor-cut algorithm, which combines tumor segmentation using cellular automata with a level-set evolving on the tumor probability map to impose spatial smoothness.

Neighborhood relationships are often used for spatial regularization after initial voxel-wise classification. In most cases this is performed with a random field method, either Markov Random Fields (MRF) (Kindermann and Snell (1980)) or Conditional Random Fields (CRF) (Lafferty et al. (2001); Kumar and Hebert (2006)). In the last years, algorithms based on some form of graph-cuts for segmentation (Boykov and Funka-Lea (2006)) have become increasingly popular. These algorithms make use of region-based properties by formulating neighborhood relationships as an energy minimization problem, which is solved by a graph-cut optimization method and the result is interpreted as a segmentation. In many cases, these methods require user-provided seeds, this is why the approaches are often semi-automatic. Lee et al. (2008) used conditional random fields for spatial regularization after previous voxel-wise SVM classification from multiple modalities. Wels et al. (2008) integrated a

probabilistic boosting tree classifier with a graph-cuts approach for considering the spatial relationships in pediatric brain tumor images. Birkbeck et al. (2009) proposed an interactive semi-automatic approach, which was able to include online user corrections and they argued that this method could not only reduce operator time, but also increased repeatability compared to manual segmentation. Hamamci et al. (2010) proposed a variation of the original graph-cut method using cellular automata for solving the shortest-path problem iteratively. Nie et al. (2009) used an EM algorithm, which was coupled with a spatial accuracy-weighted hidden Markov Random Field. This allowed them to consider anisotropic resolutions of different modalities. Zhu et al. (2012) also combined EM segmentation with MRF regularization, but added a post-processing pipeline including thresholding and morphological operations. Bauer et al. (2011a) claimed to be able to segment tumor and healthy tissues including sub-compartments based on SVM classification with integrated hierarchical CRF regularization. They also made use of prior knowledge about tissue adjacency probabilities. Hsieh et al. (2011) chose a simple region-growing and knowledge-based post-processing after fuzzy tissue classification to impose spatial coherence. Corso et al. (2007) took a different approach and suggested an extended graph-shifts algorithm, which performed energy minimization on a dynamic hierarchical representation of the image. In a later publication, they employed a multi-level approach for fusing Bayesian tissue classification with affinity assignments to perform segmentation by weighted aggregation (Corso et al. (2008)). Characteristics of each method are summarized in table 3.

2.2.4. Tumor Detection Algorithms In contrast to segmentation algorithms, detection algorithms only try to decide if tumor is present and output the approximate tumor location instead of providing a complete segmentation. Saha et al. (2011) located the tumor and drew a bounding box, instead of segmenting it. This could help in quickly analyzing large amounts of data. It was done with the help of a fast unsupervised change detection method searching for dissimilar regions across the symmetry line of the brain using Bhattacharya coefficient score. Ambrosini et al. (2010) employed a template-matching method to detect metastases on conventional MRI for screening purposes. Farjam et al. (2012) chose a similar approach, but improved on the spherical template generation process by considering variations in tumor size, lesion shape and intensities to achieve more accurate detection rates. Although these approaches do not perform a segmentation, the tumor detection could be used for initializing a segmentation method.

2.2.5. Summary and Conclusion - Segmentation Table 1, 2 and 3 present an overview of all the segmentation algorithms discussed and compare their most important characteristics and results. Most algorithms that have been suggested so far, rely on multi-modal MR images for tumor segmentation. The most promising approaches perform fully automatic segmentation based on voxel-wise classification in combination with spatial regularization to take the neighborhood information into account. They have the advantage of being very flexible and provide robust results within a

Table 3. Segmentation methods for brain tumor images using classification or clustering with additional constraints, grouped by different approaches. Evaluation was performed on different datasets, empty cells indicate no reported information. Dim stands for dimensionality, S for supervision. SA means semi-automatic, FA fully-automatic. Type describes the tumor type, which can be: G - glioma, HGG - high grade glioma, LGG - low grade glioma, M - meningioma, Met - metastasis.

| Authors | Modalities | Method | Accuracy | Speed | Dim | S | Type |
|---|---|--|-------------------------|----------|------|----|----------|
| Classification or clustering with global constraints based on atlases | | | | | | | |
| Kaus et al. (2001) | T ₁ | Adaptive template-moderated classification | >95% (accuracy) | 5-10min | 3D | FA | LGG, M |
| Moon et al. (2002) | T ₁ , T _{1c} , T ₂ | Statistical classification with geometric prior | >0.9 (overlap ratio) | | 3D | FA | G, M |
| Prastawa et al. (2003) | T ₁ , T _{1c} , T ₂ | Subject-specific modification of atlas priors | 0.49-0.71 (Jaccard) | | 3D | FA | |
| Prastawa et al. (2004) | T ₂ | Outlier detection | 0.59-0.89 (Jaccard) | 1.5h | 3D | FA | G, M |
| Menze et al. (2010) | T ₁ , T _{1c} , T ₂ , T _{2flair} | Generative model for multi-modal segmentation | 0.4-0.7 (Dice) | | 3D | FA | G |
| Weizman et al. (2012) | T ₁ , T _{2flair} , T ₂ | Classification and follow-up for optic pathway gliomas | 0.69 (Dice) | 20min | 3D | FA | G |
| Classification or clustering with constraints based on deformable models | | | | | | | |
| Cobzas et al. (2007) | T ₁ , T _{1c} , T ₂ | Variational segmentation with high-dimensional feature set | 0.16-0.76 (Jaccard) | | 3D | FA | G |
| Khotanlou et al. (2009) | T ₁ | Fuzzy classification and spatially constrained deformable models | 0.92 (similarity index) | 4.5min | 3D | FA | HGG, M |
| Cobzas and Schmidt (2009) | T _{1c} , T _{2flair} | Level-set with embedded CRF | 0.5-0.75 (Jaccard) | | 3D | FA | G |
| Popuri et al. (2012) | T ₁ , T _{1c} , T ₂ | Variational segmentation on a clustered feature set | 0.58 (Jaccard) | | 3D | FA | G |
| Hamamci et al. (2011) | T _{1c} | Tumor-Cut | 0.8-0.89 (Dice) | 1s-16min | 3D | SA | G,M, Met |
| Classification or clustering with local constraints based on neighborhood regularization | | | | | | | |
| Corso et al. (2007) | T ₁ , T _{1c} , T ₂ , T _{2flair} | Extended graph-shifts algorithm | 0.87 (Jaccard) | 1min | 3D | FA | HGG |
| Corso et al. (2008) | T ₁ , T _{1c} , T ₂ , T _{2flair} | Segmentation by weighted aggregation | 0.62-0.69 (Jaccard) | <1min | 3D | FA | HGG |
| Lee et al. (2008) | T ₁ , T _{1c} , T ₂ | Pseudo conditional random fields | 0.84-0.9 (Jaccard) | | 2D | FA | G |
| Wels et al. (2008) | T ₁ , T _{1c} , T ₂ | Discriminative model-constrained graph-cuts | 0.78 (Jaccard) | 1-2min | 3D | FA | G |
| Birkbeck et al. (2009) | T _{1c} , T _{2flair} | Interactive graph-cuts | | 2min | 2.5D | SA | |
| Nie et al. (2009) | T ₁ , T ₂ , T _{2flair} | Spatial accuracy-weighted hierarchical MRF | 0.72-0.76 (Jaccard) | 20-25min | 3D | FA | G |
| Hamamci et al. (2010) | T _{1contrast} | Cellular automata segmentation | 0.74-0.87 (Dice) | | 3D | SA | G,M, Met |
| Hsieh et al. (2011) | T ₁ , T ₂ | Fuzzy clustering plus region-growing | 0.73 (% match) | | 3D | FA | M |
| Bauer et al. (2011a) | T ₁ , T _{1c} , T ₂ , T _{2flair} | Hierarchical SVM+CRF | 0.77-0.84 (Dice) | <2min | 3D | FA | G |
| Zhu et al. (2012) | T _{1c} , T ₂ , T _{2flair} | EM + MRF + Post-processing | 0.25-0.81 (Jaccard) | 4min | 3D | SA | HGG |

reasonable computation time. Imposing shape or localization constraints after previous classification is an effective approach too, but less flexible in handling different data and different kinds of tumors. However, fully automatic methods are subject to differences in MRI acquisitions, which can cause difficulties. Fewer examples rely on semi-automatic methods that incorporate user interaction. The interactive methods often rely on graph-cuts or deformable models with a user-defined initialization, which makes them very flexible, but eliminates the advantage of being completely objective. It is not possible to draw general conclusions about the accuracy of different methods, because so far they have all been evaluated on different datasets.

While preparing this review, it became apparent that many papers focus on segmentation algorithms and not on the features extracted from the image. Features might be more important especially when considering the variance in appearance of different tumor types and grades. In the future, it might be worthwhile to take a closer

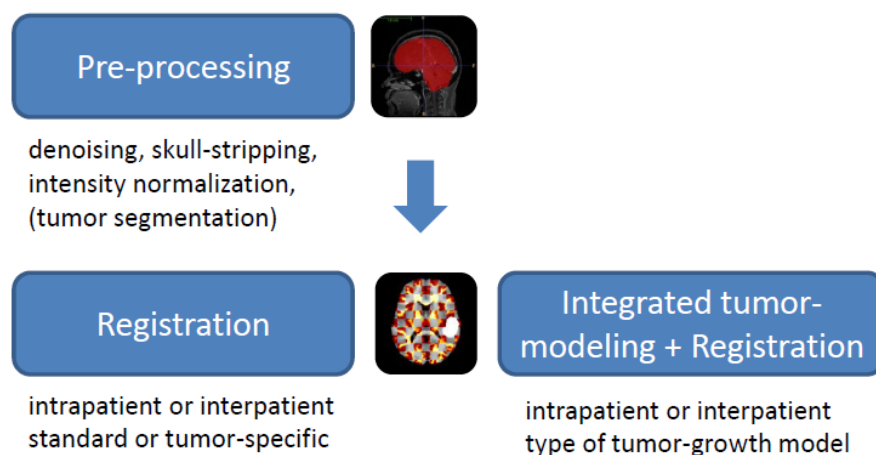


Figure 4. Illustration of the main blocks, which are used for building up the registration pipeline of most algorithms discussed in this article. We distinguish between algorithms, which are only based on registration and integrated algorithms combining tumor-growth modeling with registration. Most algorithms perform a linear registration for initial alignment before a non-rigid transformation is applied. The non-rigid transformation can be standard or tumor-specific.

look at relevant and meaningful features, and it would be interesting to explore how new features can be designed to obtain better results. This could be added to improvements in pre-processing for image standardization and in constraints for increased robustness.

2.3. Registration of Brain Tumor Images

Image registration of tumor-bearing brain images mainly focuses on two different objectives: intrapatient multi-modal or longitudinal registration (alignment) of images on the one hand, and interpatient spatial normalization of brain tumor images to a brain atlas on the other hand. The latter is commonly used for atlas-based segmentation purposes (Cabezas et al. (2011)) or for statistical analysis and functional/structural mapping of brain tumor images. It can also be applied for constructing statistical tumor atlases from multiple patients (Davatzikos et al. (2011)). A diagram illustrating the major blocks of most registration pipelines is shown in figure 4. The pre-processing steps are very similar to those discussed in section 2.2.1 and are therefore not repeated here. We decided to separate registration methods and methods integrating tumor-modeling with registration. Again, both can be sub-grouped into intra- or interpatient methods, which can use either standard or tumor-specific registration algorithms. Usually, an initial rigid alignment is followed by a non-rigid transformation step (Sotiras et al. (2012)). The feature metric, which is used by most of the discussed approaches is intensity-based registration thanks to its general applicability.

2.3.1. Standard Inpatient Registration In the case of inpatient multi-modal or longitudinal registration of images, the aim is to geometrically transform the images into a common reference space for simultaneous analysis of the different modalities, or for tumor growth monitoring over time. The problem of simply aligning the images without specifically considering any growth or deformation effects by the tumor was extensively studied by Mang et al. (2008), who concluded that in general, affine registration with a mutual information metric performed best. Another problem, which frequently occurs in registration of tumor-bearing brain images is the anisotropic voxel spacing. The individual modalities are usually acquired with different anisotropic resolutions, sometimes even in different orientations. The resulting interpolation problem has been addressed for the general case in Thévenaz et al. (2000). Nevertheless, in practice the inherent partial-volume effects still pose significant challenges for resampling all images in a common reference space. Characteristics of the method are summarized in table 4.

2.3.2. Advanced longitudinal Inpatient Registration to handle Resections The problem of inpatient registration is much more difficult when effects of surgery are considered because then, non-linear effects have to be included and in most cases it is not sufficient to apply standard registration algorithms. One application area for this is registration of pre-operative images to intra-operative images or post-resection tumor images. Clatz et al. (2005a) tackled the problem of non-rigidly registering intra-operative MR images to pre-operative scans. They were able to handle the mechanical brain deformation during surgery with a patient-specific finite element method (FEM) and a non-rigid block-matching method. Strict constraints on the computation time could be handled by a parallelized implementation and pre-computation of a large part of the processing pipeline. Archip et al. (2007a) extended this approach, but they registered additional pre-operatively acquired MRI modalities, so that this information could be exploited during surgery. They achieved near real-time computational speed and were able to provide enhanced visualization during neurosurgery. Wittek et al. (2007) presented a patient-specific bio-mechanical model of brain deformation and its application to image registration. In their method, they were able to make use of patient-specific non-linear bio-mechanical tissue properties for integrating FEM analysis into non-rigid registration of pre- and intra-operative images. Chitphakdithai and Duncan (2010) relied on non-rigid registration for considering changes after brain tumor treatment. They formulated registration as a maximum a posteriori (MAP) problem and solved it in an EM framework. This way, the probability term of the transformation could be seen as a similarity metric, for which an indicator map could model different correspondence assumptions for different tissue classes. Characteristics of each method are summarized in table 4.

2.3.3. Advanced longitudinal Inpatient Registration for Tumor Growth Monitoring Another area where advanced inpatient registration strategies are necessary is tumor growth monitoring from longitudinal image acquisitions. Konukoglu et al.

Table 4. Overview of registration methods for brain tumor images, grouped by different approaches for inpatient registration. Evaluation was performed on different datasets, empty cells indicate no reported information. Dim stands for dimensionality, S for supervision, Transf. for the transformation model. SA means semi-automatic, FA fully-automatic, L linear transformation model and NL non-linear transformation model. Type describes the tumor type, which can be: G - glioma, HGG - high grade glioma, LGG - low grade glioma, M - meningioma, Met - metastasis.

| Authors | Method | Accuracy | Speed | Dim | S | Transf. | Type |
|---|---|--------------------|----------------|-------|----|---------|------|
| Standard inpatient registration | | | | | | | |
| Mang et al. (2008) | Consistency of parametric registration | sub-voxel accuracy | | 3D | FA | L | G |
| Advanced longitudinal inpatient registration to handle resections | | | | | | | |
| Clatz et al. (2005a) | Non-rigid registration to capture brain shift | <2.5mm | <35s (cluster) | 3D | FA | NL | |
| Archip et al. (2007a) | Pre- and intra-operative alignment of MRI | <3.6mm | 179s (cluster) | 3D | | NL | G |
| Wittek et al. (2007) | Model of brain deformation for image registration | 1-30mm | 15min | 3D | | NL | |
| Chitphakdithai and Duncan (2010) | MAP registration estimation framework | 1.3 mm (AE) | | 3D | FA | NL | |
| Advanced longitudinal inpatient registration for tumor growth monitoring | | | | | | | |
| Konukoglu et al. (2008) | Tumor monitoring | <38% (error) | | 3D | SA | NL | M |
| Niethammer et al. (2011) | Geometric metamorphosis | 0.975 (overlap) | | 3D | FA | NL | |
| Pohl et al. (2011) | Detecting change in slowly evolving brain tumors | <23% (vol. diff.) | <5min | 3D | SA | L | M |
| Angelini et al. (2012) | Differential analysis for tumor growth quantification | 9-23% (error) | | 2D/3D | FA | NL | LGG |

(2008) suggested a registration method for monitoring slowly evolving meningiomas, which performed semi-automatic tumor segmentation, non-rigid registration and change detection consecutively. They argued that their volume-change measurements were less user-biased than manual measurements. Niethammer et al. (2011) suggested a metamorphosis model, which jointly estimated a deformation in space and a change in image appearance for smooth transformation. Changes in image appearance were modeled by a global geometric deformation, and local matching was based on an image composition model in a large displacement diffeomorphic metric mapping (LDDMM) framework. Pohl et al. (2011) proposed to detect changes in slowly evolving meningiomas by semi-automatic segmentation, subsequent registration and final analysis of changes in local intensity patterns. Differential MRI analysis for quantification of low-grade glioma growth was applied by Angelini et al. (2012). They used a standard affine registration, but implemented a non-linear midway-based histogram mapping, which allowed them to compare and compute intensity difference maps directly. Glioma growth was finally quantified with a statistical analysis framework of the mapped intensity distributions. Characteristics of each method are summarized in table 4.

2.3.4. Standard Interpatient Registration The case of interpatient registration of tumor-bearing brain images is even more challenging than the alignment of images from the same patient because intersubject variations have to be integrated with topological changes. Isambert et al. (2008) circumvented this problem by using a general method for registering an atlas of a standard brain to the patient image using a multi-affine block-

matching strategy. Organs at risk in a clinical radiotherapy context were delineated from the registered atlas. Later, Deeley et al. (2011) did an extensive comparison of manual and automatic segmentation methods for brain structures in presence of space-occupying lesions. As an automatic method, they used a combination of multi-affine and non-rigid registration with final level-set refinement. They claimed that the accuracy of automatic and manual segmentations were in a similar range when compared against the STAPLE ground-truth, but the manual segmentations were still slightly better. Characteristics of each method are summarized in table 5.

2.3.5. Interpatient Registration with Lesion Masking Approaches In a comparison study, Andersen et al. (2010) showed that non-rigid registration approaches which masked out the lesion area from the similarity metric, achieved superior results compared to conventional registration taking the whole image region into account. Variations of these masking methods, which gave a different weight to tumor regions have been suggested by a number of groups.

Brett et al. (2001) masked the cost function of a combined affine and non-rigid registration method. The lesion had to be manually pre-segmented, to be used as a mask for the similarity criterium during registration. They experimented with different thresholds for the cost function mask. Stefanescu et al. (2004) chose a similar approach. They created a confidence map for the similarity metric used during registration and assigned zero confidence to all voxels inside the pre-segmented tumor mask. Additionally, they allowed adaptive regularization in different tissue regions.

Dawant et al. (2002) introduced small tumor seeds in the atlas at the approximate patient tumor location. Subsequently, they performed non-rigid registration, which also deformed the seed in the atlas to match the shape of the pre-segmented tumor in the patient approximately. Commowick et al. (2005) used statistical measures of anatomical variability to guide the regularization during the registration process. Regions of low variability were regularized more strongly. Lamecker and Pennec (2010) took up the idea of using confidence weights. They added an inpainting step to a Demons registration algorithm, which modeled a zero confidence within the pathologic region. Li et al. (2011) chose a Riemannian embedding for their registration algorithm, which was able to handle topological changes. The method required an a priori estimation of topological changes as an input. Parisot et al. (2011) did not take the tumor voxels into account for deformable registration of a dataset of images from different patients. The registration output has been used for graph-based spatial position mapping of low-grade gliomas. Later, they proposed a graph-based joint segmentation and registration framework (Parisot et al. (2012)). In the tumor region, which was identified by an Adaboost classifier, the registration criterion was relaxed to produce a smooth solution of the segmentation. Characteristics of each method are summarized in table 5.

2.3.6. Interpatient Registration with Two Distinct Deformation Models Another idea for interpatient registration is to incorporate a lesion model directly into the registration

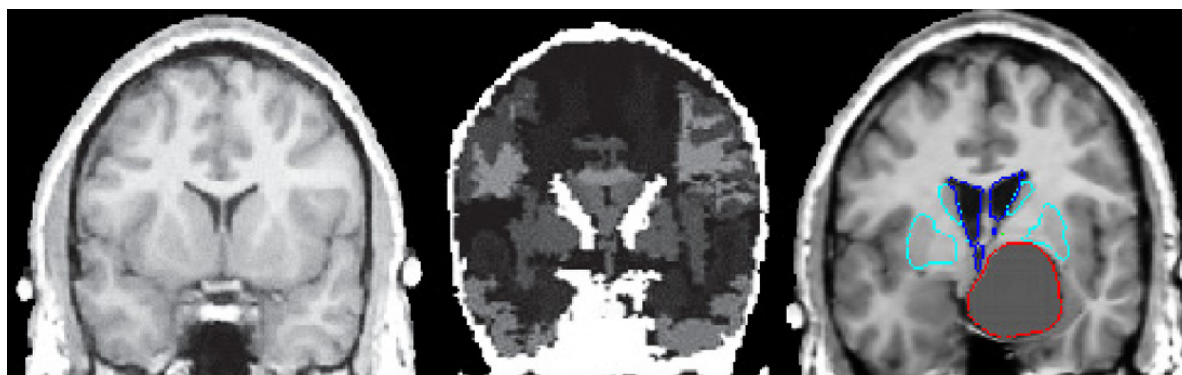


Figure 5. Registration based on two distinct deformation models. From left to right: atlas image, atlas label map and the segmented patient image (from Bach Cuadra et al. (2006)). The atlas is modified using a lesion-growth model to mimic the tumor-induced deformation and the segmented structures from the atlas are transferred to the patient image by non-rigid registration.

method. This allows for a decoupling of the deformations due to tumor growth and inter-subject variations, without having to model the complex tumor growth behavior explicitly. Bach Cuadra et al. (2004) suggested a model of lesion growth for atlas-based segmentation of tumor-bearing brain images. They incorporated a simplistic radial tumor growth model into a Demons-based non-rigid registration method. The lesion growth model modified a healthy atlas and adapted it to the tumor-bearing patient image, however the method was completely based on registration methods and did not include any kind of bio-mechanical tumor growth simulation. Later, Pollo et al. (2005) from the same group conducted more qualitative evaluation of the method. Finally, they further improved it by replacing the SSD-based Demons algorithm with an optical flow method based on mutual information (Bach Cuadra et al. (2006)). They reported better results for this method because the assumption of linear intensity correspondence between both images could be dropped (see figure 5 for results). Characteristics of each method are summarized in table 5.

2.3.7. Summary and Conclusion - Registration Most registration methods make use of a combination of rigid/affine and non-rigid registration with specific adaptations for tumor-bearing images. While non-rigid methods are obviously more accurate than standard rigid registration, they also carry additional risks of mis-registrations, especially when topological changes due to the tumor are involved. This risk can be reduced by tumor-specific adaptations, however these methods are in general more difficult to handle than standard registration approaches. It is not possible to draw a general conclusion about the accuracy and performance of different methods because different data has been used for validation, but we will briefly summarize the qualities of the different approaches.

The case of intra-subject alignment of longitudinal / multi-modal images can be easily solved by standard registration methods if tumor effects are neglected. The

Table 5. Overview of pure registration methods for brain tumor images, grouped by different approaches for interpatient registration. Evaluation was performed on different datasets, empty cells indicate no reported information. Dim stands for dimensionality, S for supervision, Transf. for the transformation model. SA means semi-automatic, FA fully-automatic, L linear transformation model and NL non-linear transformation model. Type describes the tumor type, which can be: G - glioma, HGG - high grade glioma, LGG - low grade glioma, M - meningioma, Met - metastasis.

| Authors | Method | Accuracy | Speed | Dim | S | Transf. | Type |
|---|--|---------------------------|-------------------|-----|----|---------|------|
| Standard interpatient registration | | | | | | | |
| Isambert et al. (2008) | Atlas-based segmentation in radio-therapy clinical context | 0.3-0.85 (Dice) | 7-8min (cluster) | 3D | FA | NL | G, M |
| Deeley et al. (2011) | Comparison of manual and automatic segmentation methods | 0.4-0.9 (Dice) | | 3D | FA | NL | HGG |
| Interpatient registration with lesion masking approaches | | | | | | | |
| Brett et al. (2001) | Cost function masking | 0.5-2.6mm (RMS) | | 3D | SA | NL | |
| Dawant et al. (2002) | Seeded atlas deformation | | | 3D | SA | NL | G, M |
| Stefanescu et al. (2004) | Confidence map for non-rigid registration | | 5-10min (cluster) | 3D | FA | NL | |
| Commowick et al. (2005) | Statistical measures of anatomical variability for registration | 0.84-0.94 (spec) | 1h | 3D | FA | NL | |
| Lamecker and Pennec (2010) | Demons and deformation inpainting | | 9min | 3D | SA | NL | G |
| Li et al. (2011) | Riemannian embedding | | | 3D | SA | NL | M |
| Parisot et al. (2011) | Graph-based spatial position mapping | | | 3D | SA | NL | LGG |
| Parisot et al. (2012) | Joint tumor segmentation & dense deformable registration | 0.8 (Dice) | 6min | 3D | FA | NL | LGG |
| Interpatient registration with two distinct deformation models | | | | | | | |
| Bach Cuadra et al. (2004) | Model of lesion growth for atlas-based segmentation | 37.2mm ³ (MSE) | | 3D | SA | NL | M |
| Pollo et al. (2005) | Model of lesion growth for atlas-based segmentation | | | 3D | SA | NL | M |
| Bach Cuadra et al. (2006) | Deformation field estimation for atlas-based segmentation using MLG and MI | 0.89-1.0 (TP) | | 3D | SA | NL | M |

problem is much more difficult if registration is used for longitudinal tumor growth monitoring or when registering pre- and post-resection images. Methods for registering images during surgery often make use of FEM models for considering the effect of brain-shift, while in longitudinal registration methods usually a special way of handling the tumor-induced appearance changes is employed. For intra-operative images, computation time is crucial and therefore emphasized by all authors. An overview and comparison of the presented techniques can be found in table 4.

The inter-subject normalization task is also very challenging due to the effects of the tumor mass in combination with inter-subject variations. It appears that masking out the tumor area from the calculation of the similarity metric is too simplistic and more sophisticated methods, which assign different confidence weights to different areas during registration, or which allow for a composition of two different kinds of deformations are a more promising way to solve the problem, however this also affects computation time. An overview and comparison of the presented techniques can be found in table 5.

2.4. Integrated Approaches for Tumor Growth Modeling and Registration / Segmentation

The major problem when registering a brain tumor image with a healthy atlas is the missing correspondence between pathologic patient image and healthy atlas. One idea to circumvent this problem is to seed the atlas with a tumor prior and simulate tumor growth in the atlas according to the patient image, followed by a final non-rigid registration step.

2.4.1. Types of Tumor Growth Models Tumor growth simulation approaches used in image-based modeling can fall into three different categories: on the microscopic level, cellular growth models are used, while on the macroscopic scale diffusion-reaction models or bio-mechanical models are employed.

Cellular growth models focus on cell-to-cell interactions and are able to model proliferation or apoptosis of individual cells using rule-based cellular automata (Kansal et al. (2000), Stamatakos et al. (2007), Stamatakos et al. (2010)).

Reaction-diffusion models simulate the proliferation and spread of the tumor based on a reaction-diffusion partial differential equation model. The general assumption is that the cancer cells spread along the fiber direction with different diffusion coefficients in gray matter and white matter (Swanson et al. (2000), Swanson et al. (2002)).

Bio-mechanical models take into account the mass-effect of large tumors and model the deformation of the surrounding tissues based on their material properties, usually employing a finite element method (Davatzikos et al. (2001), Zacharaki et al. (2008a), Chen et al. (2010)). For the challenge of handling the large-scale deformations occurring in brain tumor growth, it has been suggested to use an Eulerian instead of a Lagrangian formulation (Hogea et al. (2007a)).

Multi-scale models integrate the methods mentioned previously in order to gain a more precise formulation. Most models simulate proliferation based on a reaction-diffusion equation and couple this with a bio-mechanical model for the mass-effect (Clatz et al. (2005b), Hogea et al. (2007b), Hogea et al. (2008b), Hogea et al. (2008a), Prastawa et al. (2009)). An exception is May et al. (2011), where a cellular proliferation model is coupled to an Eulerian FEM model to simulate the mass-effect. Marias et al. (2011) recently made a first attempt to integrate all three levels of complexity: cellular, diffusion and bio-mechanical into one single multiscale model.

Personalization of these models is difficult, especially for registration purposes when only limited data is available for this task. Most authors employ image-based modeling, making ad-hoc assumptions about the connection between image intensities and cell densities, which again rely on segmentations of tumor and healthy tissues. Other model parameters are either initialized with standard values from literature, or optimization methods are employed for personalizing the models by choosing individual parameters.

2.4.2. Purely Bio-mechanical Growth Models combined with Registration Kyriacou

et al. (1999) were the first ones to introduce the concept of combining bio-mechanical tumor growth modeling with non-rigid registration in order to adapt a patient image to a healthy atlas. They assumed a uniform strain of the tumor and a non-linear elastic behavior of the surrounding tissues. First, shrinkage of the tumor in the patient image was performed to obtain an artificial healthy patient image. A healthy atlas was then registered to the tumor-free patient image with an elastic registration method. Subsequently, tumor growth was performed on the registered atlas using a regression method to invert the tumor shrinkage process from the previous step. Finally, they obtained a patient-adapted atlas including pathology. The concept was demonstrated on 2D image slices.

Later, Mohamed et al. (2006) from the same group chose a different approach. Instead of shrinking the patient tumor, they grew the tumor in the atlas image according to the pathologic patient image and applied a non-rigid registration to adapt the modified atlas to the patient image. In order to handle the significant computational cost of the tumor growth modeling in 3D, they employed an approach based on a statistical model of tumor-induced deformation using principal component analysis (PCA). For each case, the most likely parameters were estimated and the deformation could be applied based on the pre-built statistical model. Zacharaki et al. (2008b) further developed this approach as a multi-resolution framework for registration of brain tumor images. In their approach, they also used a statistical model of tumor induced deformation, but in a hierarchical framework for parameter optimization. Local information was incorporated into the tumor growth model and the registration methodology was improved. In a next step, Zacharaki et al. (2009a) improved the tumor growth model compared to their previous method. They employed a piecewise Eulerian simulator with a uniform outward pushing pressure model for the bulk tumor, which did not require the simplified PCA model for tumor growth while still being computationally efficient. Additionally, parameter optimization was performed in a parallelized fashion for further speed improvements.

Bauer et al. (2011b) proposed a more simplistic model for tumor growth, which they combined with a non-rigid Demons registration. A healthy atlas was seeded automatically and bio-mechanical tumor growth was modeled assuming a radial expansion force. The expansion was propagated over the image by means of a Markov Random Field method on the deformation field. Characteristics of each method are summarized in table 6.

2.4.3. Diffusion-based Bio-mechanical Growth Models combined with Registration

Gooya et al. (2011a) employed a more sophisticated diffusion-reaction model for tumor growth, which was coupled with an Eulerian method to simulate the mass-effect. They operated on multi-sequence images to obtain a probability map of the different tissue classes using SVM classification techniques. The patient specific tumor was grown in the atlas and a Demons like algorithm was employed for the localized atlas-to-patient transformation for which the tissue probability maps from the multi-sequence

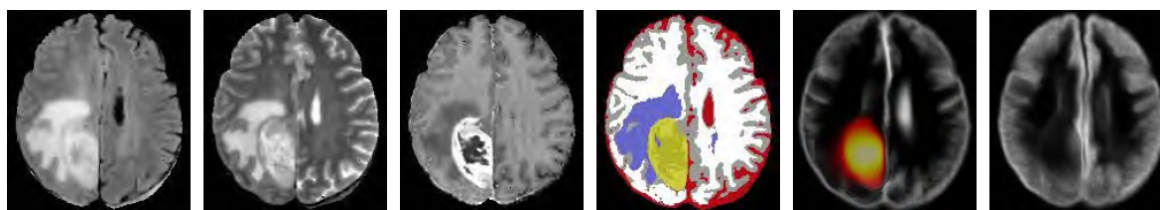


Figure 6. Integrated tumor-growth modeling and non-rigid registration. Axial slices of the three modalities (FLAIR, T_2 , $T_{1\text{contrast}}$), which were used, are shown on the left. The segmentation result of the GLISTR method is shown in the center. The images on the right depict the obtained probability maps for tumor (color), CSF and gray matter (grayscale) respectively after the combined tumor growth simulation and registration. From Gooya et al. (2012).

classifier were considered for the cost function. The whole process was formulated in an expectation maximization framework to jointly estimate tumor growth and the spatial transformations for adapting the atlas to the patient image. In an extension, Gooya et al. (2011b) dropped the requirement for a pre-classification and proposed a joint segmentation and registration model including tumor growth. To this end, they used again an expectation maximization algorithm to jointly estimate tumor growth parameters and registration deformation field to obtain the tissue posterior probabilities in the patient image derived from the atlas. The approach was recently further improved and extended (Gooya et al. (2012), see figure 6), where the authors also reported on employing the method for the construction of statistical atlases for gliomas. Characteristics of each method are summarized in table 6.

2.4.4. Bio-mechanical Growth Method Based on a Cellular Model combined with Registration Bauer et al. (2012) suggested to use a bio-physio-mechanical tumor growth model for atlas-based segmentation of tumor-bearing brain images. They seeded the atlas with a patient specific prior and simulated tumor growth with a cellular automaton modeling tumor cell proliferation, which was coupled to an Eulerian FEM method to handle the tumor mass-effect. The modified atlas was registered to the patient image with a Demons algorithm and the label map was propagated for segmentation. Recently, they extended this to be applicable to radiotherapy and neurosurgery (Bauer et al. (2013)). The tumor outline was defined using classification methods and important structures were segmented by warping a subcortical label map with an enhanced registration metric. Characteristics of the methods are summarized in table 6.

2.4.5. Summary and Conclusion - Integrated Approaches Several authors have proposed integrated approaches that combine tumor growth modeling with segmentation methods based on registration of an atlas (see table 6 for a summary). To this end, initial correspondence between healthy atlas and pathologic patient image is established with the help of tumor growth simulation. It has been observed that the initially proposed purely bio-mechanical methods, modeling the tumor-mass effect only, were

Table 6. Overview of combined tumor growth modeling and registration/segmentation methods, grouped by different approaches. Evaluation was performed on different datasets, empty cells indicate no reported information. Dim stands for dimensionality, S for supervision, Transf. for the transformation model. SA means semi-automatic, FA fully-automatic, L linear transformation model and NL non-linear transformation model. Type describes the tumor type, which can be: G - glioma, HGG - high grade glioma, LGG - low grade glioma, M - meningioma, Met - metastasis.

| Authors | Method | Accuracy | Speed | Dim | S | Transf. | Type |
|--|--|---------------------|-----------------|-----|---|---------|--------|
| Purely bio-mechanical growth model | | | | | | | |
| Kyriacou et al. (1999) | Bio-mechanical tumor shrinkage and growth for registration | <3.5mm | <100min | 2D | | SA NL | Met |
| Mohamed et al. (2006) | Statistical model for tumor-induced deformation | <19mm | 35min | 3D | | SA NL | G |
| Zacharaki et al. (2008b) | ORBIT | <42mm | 14h | 3D | | SA NL | |
| Zacharaki et al. (2009a) | Non-diffeomorphic registration with tumor growth | 0.67-0.74 (Dice) | <6h (cluster) | 3D | | SA NL | G, Met |
| Bauer et al. (2011b) | MRF lesion growth model | 0.7-0.95 (Dice) | <30min (GPU) | 3D | | SA NL | G |
| Diffusion-based bio-mechanical growth methods | | | | | | | |
| Gooya et al. (2011a) | Registration with EM algorithm and diffusion modeling | 0.29-0.63 (Jaccard) | 6-14h (cluster) | 3D | | FA NL | G |
| Gooya et al. (2011b) | Joint Segmentation and Registration | 0.76-0.85 (Dice) | | 3D | | FA NL | G |
| Gooya et al. (2012) | GLISTR: Glioma image segmentation & registration | 0.75-0.84 (Dice) | 3-6h | 3D | | FA NL | G, Met |
| Cellular-based bio-mechanical growth methods | | | | | | | |
| Bauer et al. (2012) | Multi-scale modeling for atlas-based segmentation | 0.56-0.95 (Dice) | 10-36h | 3D | | SA NL | G |
| Bauer et al. (2013) | Integrated segmentation for radiotherapy & neurosurgery | 0.41-0.72 (Dice) | 6-48h | 3D | | FA NL | G |

not satisfactory. Therefore, the more realistic models simulate the mass-effect coupled to either a microscopic cellular proliferation model or a macroscopic diffusion model. A logical next step would be to integrate all three levels: cellular, diffusion and bio-mechanical layer to obtain a more meaningful model. The non-rigid registration methods applied after tumor growth simulation, are mostly standard algorithms which are well-known in the medical image analysis community. It would be interesting to see if additional knowledge about tissue distributions and characteristics in brain tumor images could be useful. However, before the approaches presented in this section can become clinically relevant, computation time has to be drastically reduced.

3. Discussion & Outlook

3.1. Critical Review of the Current State of the Art

In this review article, we gave an overview of the state of the art in MRI-based medical image analysis for brain tumor studies. The focus was on segmentation and registration, whereas some of the registration methods also included tumor growth modeling. The first attempts in this field were made almost two decades ago, but it can be observed that in recent years the methods are becoming mature and an increase of their use in clinical practice is expected.

The majority of segmentation approaches operate on multi-sequence MRI data, employing classification methods using different features and taking spatial information

in a local neighborhood into account. The trend is not to segment the tumor only, but also to delineate tumor sub-compartments and different healthy regions on images from standard clinical acquisition protocols. This provides the physician with a more comprehensive information, on which diagnosis, tumor monitoring and therapy planning can be based. Apart from the evaluation of accuracy and robustness, an important criterium is computation time. Processing times of a few minutes are the current standard. Performing a better problem-oriented selection of the segmentation technique instead of choosing the technique first and then try to make it work on the current problem, could be accomplished in the future by paying more attention to feature selection than the segmentation algorithm.

The registration methods can be separated into intra- and inter-patient registration. In intra-patient registration, the main challenge is to handle effects of tumor growth or resection, which is mostly done by tumor image-specific extensions to standard registration algorithms. The majority of inter-patient registration approaches focus on registration of tumor-bearing brain images with a normal atlas. This can be used for atlas-based segmentation or for constructing statistical brain tumor atlases. One attempt to handle the missing correspondence between healthy atlas and pathologic patient image is solely based on registration methods, a different idea is to combine tumor growth modeling with registration methods. While the registration approaches are more general, the integrated approaches tend to be more accurate, however the tumor-growth model adds additional complexity, which also introduces additional risks. A major problem, especially for the integrated approaches, is their tremendous computation time. Therefore, these methods should be considered as pure research methods at the moment, and will not reach clinical use until improvements in computational speed are attained.

Comparing the traditional segmentation techniques and the atlas-based segmentation methods, which rely on registration, it is clear that the traditional segmentation techniques are more flexible and can be more easily adapted to handle multiple modalities simultaneously. Additionally, it is possible to treat individual tumor sub-compartments more easily. Atlas-based methods have advantages when segmenting tissues and structures surrounding the tumor, especially subcortical structures or functional areas. These structures can be segmented more easily if there is atlas-encoded information about spatial localization available. This can have important implications for surgery or radiation therapy. However, many of the approaches incorporating tumor-growth modeling have difficulties in handling multifocal lesions.

While preparing this article, it became apparent that some papers in the literature lack in precision, describing what exactly is being done, what type and grade of tumor is being considered, what image data is being used or how the algorithm performs in terms of robustness, accuracy and speed. This can be easily seen from the many empty fields in the presented tables. Particularly in the case of medical image analysis for brain tumor studies, better attention should be paid to differences according to the tumor type and grade, but also to robustness of the algorithm. Eventually, it would be useful

to test any new method on a standard database of brain tumor images to allow for a fair comparison against the state of the art. The MICCAI BraTS dataset || would be one candidate for such a database (see also section 2.1).

3.2. Clinical Requirements and Applicability

Although a lot of research has been done in this field in the last years, application in the clinics is still limited. Despite the huge amount of work involved and the limited objectiveness, in many cases clinicians still rely on manual tumor delineations. This is probably mostly due to a lack of communication between researchers and clinicians. Many of the tools developed so far are pure research tools, which are not easy to handle for clinicians. Therefore, a major effort should be spent on embedding the developed tools into more user-friendly environments in the future. So far, in most commercial workstations, only very simple methods are implemented (e.g. thresholding). One reason for this might be, that the technology transfer from the bench to the bedside is still a major challenge because the performance achieved in a well controlled research environment can often not be reproduced in clinical routine. Recently, more researchers have tried to consider standard clinical acquisition protocols when developing their methods, instead of focusing on feasibility studies that employ pure research data as image material. This will hopefully aid in spreading the application more quickly. Another important aspect is computation time: real-time segmentation will be hard to achieve, but computation times which are beyond a few minutes, are unacceptable in clinical routine. For everyday use, robustness is crucial. This includes robustness against slight changes in the acquisition protocol, but also the flexibility to handle new acquisition protocols. If a method tends to fail completely on some cases, doctors will lose their trust in the automatic approach and will not be willing to change their habits. Therefore, thorough demonstration of the robustness should be one of the major steps for each new method.

Currently, image acquisition protocols are not completely standardized. In order to be able to make the best possible use of automatic methods for medical image analysis, it is essential to have image data, which has been acquired according to a well-defined protocol across different clinical sites. We expect such a standardization would aid significantly in improving the applicability and spread the use of automatic methods because the need for fine-tuning according to specific imaging characteristics will be eliminated.

Standard therapeutic procedures for brain tumors include resection, followed by fractionated radiation therapy combined with temozolomide (TMZ) chemotherapy (Stupp et al. (2009)). Due to recent changes in glioma treatment, the traditional Macdonald criteria (Macdonald et al. (1990)) for tumor response evaluation are increasingly recognized to be not adequate any more, as effects of pseudo-progression and pseudo-response are not covered by these criteria. Since the formulation of the

|| <http://www2.imm.dtu.dk/projects/BRATS2012/>

Macdonald criteria, many novel MR-techniques have become available, now widely used in clinical routine, that allow for the non-invasive retrieval of morphological, functional and metabolic properties of brain tumors (e.g. diffusion weighted imaging, dynamic susceptibility contrast enhanced perfusion imaging, MR-spectroscopy (MRS)). These techniques may be able to fill the gap in the proper evaluation of tumor progression in the future, together with improvements in tumor volume estimation from medical image analysis by forming an integrated platform for advanced tumor assessment.

Eventually, a dialogue should be initiated to convince practitioners that although a software tool might lack in accuracy compared to the manual method in certain cases, it offers more objectiveness, which is very important in longitudinal studies. However, while being objective, the automatic segmentation obviously has to be sufficiently close to what a radiologist perceives as the correct tumor segmentation. If this cannot be achieved by fully automatic methods, it might be worthwhile to consider an interactive method that is initialized or corrected by the user. In practice, the variability introduced by interactive user input is usually much smaller than the variability of completely manual segmentation results. In this case, ease of use for the clinician is crucial for any method to be accepted. It should also not be neglected that for automatic tumor image analysis methods to be used as a routine diagnosis tool, certification is mandatory. This probably means that the application will not reach a breakthrough in the clinics before commercial software packages are being offered. Current clinical viewing systems are often not even well equipped yet for visualizing changes in multiple image classes over time.

3.3. Publicly Available Toolboxes

Only very few implementations of the presented methods are publicly available. This impedes comparison of new methods to existing approaches and also hinders large-scale evaluation with clinical data from different sites. To the best of our knowledge, at the moment there are only three methods publicly available for download, which are dedicated to the analysis of brain tumor images:

Prastawa et al. (2009) provide their “TumorSim” software for simulation of synthetic brain tumor images ¶. Bauer et al. (2011a) offer the “DoctorNo” suite of tools (Bauer and Reyes (2011)) as a plugin for the GUI-based “DoctorEye” software platform (Skounakis et al. (2010)) for download +. Gooya et al. (2011a) provide the “GLISTR” toolkit on their website *.

3.4. Future Directions and Trends

It can be expected that the current efforts for registration and segmentation of tumor-bearing brain images on standard MRI protocols will enter routine clinical procedures in

¶ www.nitrc.org/projects/tumorsim

+ www.istb.unibe.ch/content/research/medical_image_analysis/software

* www.rad.upenn.edu/sbia/software/glistr

the next years (Levy and Rubin (2011)). In order for this to happen, proof of robustness and sufficient speed of the methods is mandatory, as outlined before. This development is likely to be pushed with the anticipated shift from the diameter-based MacDonald (Macdonald et al. (1990)) and RECIST (Therasse et al. (2000)) criteria to volume-based criteria for assessment of tumor response to treatment as suggested by the RANO group (Wen et al. (2010)). However, it remains to be investigated how well automatic methods can handle the impact of treatment effects and related pseudo-progression or pseudo-response on the segmentation outcome, which will also be interesting for clinical trials (Henson et al. (2008)). Nevertheless, the objectiveness of automatic methods in tumor segmentation is undisputed and Angelini et al. (2012) have made use of this in a first comprehensive study on longitudinal brain tumor data. It is likely that this line of research will be exploited more in the future.

Apart from the standard imaging methods, recently more advanced MRI modalities like perfusion imaging, diffusion tensor imaging (DTI) and magnetic resonance spectroscopy (MRS) are getting more attention (Cha (2006), Law (2009)) in brain tumor analysis. These modalities are mostly used for tumor grading and for localization of the most active areas of the tumor. Researchers have started to apply machine learning approaches for tumor grading from perfusion images (Slotboom et al. (2008), Zacharaki et al. (2009b), Emblem et al. (2009), Zöllner et al. (2010), Zacharaki et al. (2011)) and also for analysis of combined MRI/MRS data (Luts et al. (2007), Fayed et al. (2008), Georgiadis et al. (2011)). PET imaging has the potential to provide better prognostic information and distinguish recurrent tumor from radiation necrosis (Chen (2007); Dhermain et al. (2010)).

Another area, which is likely to get increased attention is patient-specific image-based modeling of brain tumor growth (Konukoglu et al. (2010), Menze et al. (2011)). This research could help to predict tumor progression and optimize treatment options on an individual basis.

Acknowledgments

The authors would like to acknowledge fruitful discussions within the ContraCancrum consortium. This research was partially funded by the European Union within the framework of the ContraCancrum project (FP7 - IST-223979) and it was also partially funded by the Swiss National Science Foundation within the framework of the NCCR Co-Me.

References

Ahmed, S., Iftexharuddin, K. M., and Vossough, A. (2011). Efficacy of texture, shape, and intensity feature fusion for posterior-fossa tumor segmentation in MRI. *IEEE transactions on information technology in biomedicine : a publication of the IEEE Engineering in Medicine and Biology Society*, 15(2):206–13.

- Ambrosini, R. D., Wang, P., and O'Dell, W. G. (2010). Computer-aided detection of metastatic brain tumors using automated three-dimensional template matching. *Journal of magnetic resonance imaging : JMRI*, 31(1):85–93.
- Andersen, S. M., Rapcsak, S. Z., and Beeson, P. M. (2010). Cost function masking during normalization of brains with focal lesions: still a necessity? *NeuroImage*, 53(1):78–84.
- Angelini, E. D., Clatz, O., Mandonnet, E., Konukoglu, E., Capelle, L., and Duffau, H. (2007). Glioma Dynamics and Computational Models: A Review of Segmentation, Registration, and In Silico Growth Algorithms and their Clinical Applications. *Current Medical Imaging Reviews*, 3(4):262–276.
- Angelini, E. D., Delon, J., Bah, A. B., Capelle, L., and Mandonnet, E. (2012). Differential MRI analysis for quantification of low grade glioma growth. *Medical image analysis*, 16(1):114–26.
- Archip, N., Clatz, O., Whalen, S., Kacher, D., Fedorov, A., Kot, A., Chrisochoides, N., Jolesz, F., Golby, A., Black, P. M., and Warfield, S. K. (2007a). Non-rigid alignment of pre-operative MRI, fMRI, and DT-MRI with intra-operative MRI for enhanced visualization and navigation in image-guided neurosurgery. *NeuroImage*, 35(2):609–24.
- Archip, N., Jolesz, F. A., and Warfield, S. K. (2007b). A validation framework for brain tumor segmentation. *Academic radiology*, 14(10):1242–51.
- Bach Cuadra, M., De Craene, M., Duay, V., Macq, B., Pollo, C., and Thiran, J.-P. (2006). Dense deformation field estimation for atlas-based segmentation of pathological MR brain images. *Computer methods and programs in biomedicine*, 84(2-3):66–75.
- Bach Cuadra, M., Pollo, C., Bardera, A., Cuisenaire, O., Villemure, J.-G., and Thiran, J.-P. (2004). Atlas-based segmentation of pathological MR brain images using a model of lesion growth. *IEEE transactions on medical imaging*, 23(10):1301–14.
- Balafar, M. A., Ramli, A. R., Saripan, M. I., and Mashohor, S. (2010). Review of brain MRI image segmentation methods. *Artificial Intelligence Review*, 33(3):261–274.
- Bankman, I. N. (2008). *Handbook of Medical Image Processing and Analysis*. Academic Press, 2nd edition.
- Bauer, S., Lu, H., May, C. P., Nolte, L.-P., Büchler, P., and Reyes, M. (2013). Integrated segmentation of brain tumor images for radiotherapy and neurosurgery. *International Journal of Imaging Systems and Technology*, 23(1):59–63.
- Bauer, S., May, C., Dionysiou, D., Stamatakis, G., Buchler, P., and Reyes, M. (2012). Multi-Scale Modeling for Image Analysis of Brain Tumor Studies. *IEEE Transactions on Biomedical Engineering*, 59(1):25–29.
- Bauer, S., Nolte, L.-P., and Reyes, M. (2011a). Fully Automatic Segmentation of Brain Tumor Images Using Support Vector Machine Classification in Combination with Hierarchical Conditional Random Field Regularization. In Fichtinger, G., Martel, A.,

- and Peters, T., editors, *MICCAI - Medical Image Computing and Computer Assisted Interventions*, volume 6893 of *Lecture Notes in Computer Science*, pages 354–361, Berlin, Heidelberg. Springer Berlin Heidelberg.
- Bauer, S., Nolte, L.-P., and Reyes, M. (2011b). Segmentation of Brain Tumor Images based on Atlas-Registration combined with a Markov-Random-Field Lesion Growth Model. In *2011 IEEE International Symposium on Biomedical Imaging*, pages 2018–2021, Chicago. IEEE.
- Bauer, S. and Reyes, M. (2011). Doctor-No: A Suite of DoctorEye Plugins by UniBe. Technical report, University of Bern.
- Birkbeck, N., Cobzas, D., Jagersand, M., Murtha, A., and Kesztyues, T. (2009). An interactive graph cut method for brain tumor segmentation. *Workshop on Applications of Computer Vision (WACV)*, pages 1–7.
- Boykov, Y. and Funka-Lea, G. (2006). Graph Cuts and Efficient N-D Image Segmentation. *International Journal of Computer Vision*, 70(2):109–131.
- Brett, M., Leff, A. P., Rorden, C., and Ashburner, J. (2001). Spatial normalization of brain images with focal lesions using cost function masking. *NeuroImage*, 14(2):486–500.
- Cabezas, M., Oliver, A., Lladó, X., Freixenet, J., and Bach Cuadra, M. (2011). A review of atlas-based segmentation for magnetic resonance brain images. *Computer methods and programs in biomedicine*, 104(3):e158–e177.
- Cai, H., Verma, R., Ou, Y., Lee, S.-K., Melhem, E., and Davatzikos, C. (2007). Probabilistic segmentation of brain tumors based on multi-modality magnetic resonance images. In *Biomedical Imaging: From Nano to Macro, 4th IEEE International Symposium on*, pages 600–603. IEEE.
- Cha, S. (2006). Update on brain tumor imaging: from anatomy to physiology. *AJNR. American journal of neuroradiology*, 27(3):475–87.
- Chen, W. (2007). Clinical applications of PET in brain tumors. *Journal of nuclear medicine*, 48(9):1468–81.
- Chen, Y., Ji, S., Wu, X., An, H., Zhu, H., Shen, D., and Lin, W. (2010). Simulation of brain mass effect with an arbitrary Lagrangian and Eulerian FEM. In *Medical image computing and computer-assisted intervention : MICCAI 2010*, volume 13 of *LNCS*, pages 274–81. Springer Berlin Heidelberg.
- Chitphakdithai, N. and Duncan, J. S. (2010). Non-rigid registration with missing correspondences in preoperative and postresection brain images. *Medical image computing and computer-assisted intervention : MICCAI*, 13(Pt 1):367–74.
- Clark, M. C., Hall, L. O., Goldgof, D. B., Velthuizen, R., Murtagh, F. R., and Silbiger, M. S. (1998). Automatic tumor segmentation using knowledge-based techniques. *IEEE transactions on medical imaging*, 17(2):187–201.
- Clarke, J. and Chang, S. (2009). Pseudoprogession and pseudoresponse: challenges in brain tumor imaging. *Current neurology and neuroscience reports*, 9(3):241–246.

- Clatz, O., Delingette, H., Talos, I.-F., Golby, A. J., Kikinis, R., Jolesz, F. A., Ayache, N., and Warfield, S. K. (2005a). Robust nonrigid registration to capture brain shift from intraoperative MRI. *IEEE transactions on medical imaging*, 24(11):1417–27.
- Clatz, O., Sermesant, M., Bondiau, P.-Y., Delingette, H., Warfield, S. K., Malandain, G., and Ayache, N. (2005b). Realistic simulation of the 3-D growth of brain tumors in MR images coupling diffusion with biomechanical deformation. *IEEE transactions on medical imaging*, 24(10):1334–46.
- Cobzas, D., Birkbeck, N., Schmidt, M., Jagersand, M., and Murtha, A. (2007). 3D Variational Brain Tumor Segmentation using a High Dimensional Feature Set. *IEEE 11th International Conference on Computer Vision*, pages 1–8.
- Cobzas, D. and Schmidt, M. (2009). Increased discrimination in level set methods with embedded conditional random fields. *IEEE Conference on Computer Vision and Pattern Recognition*, pages 328–335.
- Cocosco, C., Kollokian, V., Kwan, R., and Evans, A. (1997). BrainWeb: Online interface to a 3D MRI simulated brain database. *Neuroimage*, 5(4):425.
- Commowick, O., Stefanescu, R., Fillard, P., Arsigny, V., Ayache, N., Pennec, X., and Malandain, G. (2005). Incorporating statistical measures of anatomical variability in atlas-to-subject registration for conformal brain radiotherapy. *Medical image computing and computer-assisted intervention : MICCAI*, 8(Pt 2):927–34.
- Corso, J. J., Sharon, E., Dube, S., El-Saden, S., Sinha, U., and Yuille, A. (2008). Efficient multilevel brain tumor segmentation with integrated bayesian model classification. *IEEE transactions on medical imaging*, 27(5):629–40.
- Corso, J. J., Yuille, A., Sicotte, N. L., and Toga, A. (2007). Detection and segmentation of pathological structures by the extended graph-shifts algorithm. In *Medical image computing and computer-assisted intervention : MICCAI 2007*, volume 10, pages 985–93. Springer.
- Criminisi, A., Shotton, J., and Konukoglu, E. (2011). Decision Forests for Classification , Regression , Density Estimation , Manifold Learning and Semi-Supervised Learning. Technical report, Microsoft Research.
- Crum, W. R., Camara, O., and Hill, D. L. G. (2006). Generalized overlap measures for evaluation and validation in medical image analysis. *IEEE transactions on medical imaging*, 25(11):1451–61.
- Davatzikos, C., Shen, D., Mohamed, A., and Kyriacou, S. K. (2001). A framework for predictive modeling of anatomical deformations. *IEEE transactions on medical imaging*, 20(8):836–43.
- Davatzikos, C., Zacharaki, E. I., Gooya, A., and Clark, V. (2011). Multi-parametric analysis and registration of brain tumors: Constructing statistical atlases and diagnostic tools of predictive value. *Annual International Conference of the IEEE Engineering in Medicine and Biology Society.*, 2011:6979–81.

- Dawant, B. M., Hartmann, S. L., Pan, S., and Gadamsetty, S. (2002). Brain atlas deformation in the presence of small and large space-occupying tumors. *Computer aided surgery : official journal of the International Society for Computer Aided Surgery*, 7(1):1–10.
- DeAngelis, L. M. (2001). Brain tumors. *The New England journal of medicine*, 344(2):114–23.
- Deeley, M. A., Chen, A., Datteri, R., Noble, J. H., Cmelak, A. J., Donnelly, E. F., Malcolm, A. W., Moretti, L., Jaboin, J., Niermann, K., Yang, E. S., Yu, D. S., Yei, F., Koyama, T., Ding, G. X., and Dawant, B. M. (2011). Comparison of manual and automatic segmentation methods for brain structures in the presence of space-occupying lesions: a multi-expert study. *Physics in medicine and biology*, 56(14):4557–77.
- Deimling, A. (2009). *Gliomas*, volume 171 of *Recent Results in Cancer Research*. Springer Berlin Heidelberg.
- Dempster, A. (1977). Maximum likelihood from incomplete data via the EM algorithm. *Journal of the Royal Statistical Society*, 39(1):1–38.
- Dhermain, F. G., Hau, P., Lanfermann, H., Jacobs, A. H., and van den Bent, M. J. (2010). Advanced MRI and PET imaging for assessment of treatment response in patients with gliomas. *Lancet neurology*, 9(9):906–20.
- Diaz, I., Boulanger, P., Greiner, R., and Murtha, A. (2011). A critical review of the effects of de-noising algorithms on MRI brain tumor segmentation. *Annual International Conference of the IEEE Engineering in Medicine and Biology Society*, 2011:3934–7.
- Drevelegas, A. and Papanikolaou, N. (2011). Imaging Modalities in Brain Tumors. In Drevelegas, A., editor, *Imaging of Brain Tumors with Histological Correlations*, chapter 2, pages 13–34. Springer Berlin Heidelberg.
- Egger, J., Kapur, T., Fedorov, A., Pieper, S., Miller, J. V., Veeraraghavan, H., Freisleben, B., Golby, A. J., Nimsy, C., and Kikinis, R. (2013). GBM Volumetry using the 3D Slicer Medical Image Computing Platform. *Scientific reports*, 3:1364.
- Ekin, A. (2011). Pathology-robust MR intensity normalization with global and local constraints. In *IEEE International Symposium on Biomedical Imaging: From Nano to Macro*, pages 333–336, Chicago. IEEE.
- Emblem, K. E., Nedregard, B., Hald, J. K., Nome, T., Due-Tonnessen, P., and Bjornerud, A. (2009). Automatic glioma characterization from dynamic susceptibility contrast imaging: brain tumor segmentation using knowledge-based fuzzy clustering. *Journal of magnetic resonance imaging : JMRI*, 30(1):1–10.
- Farjam, R., Parmar, H. A., Noll, D. C., Tsien, C. I., and Cao, Y. (2012). An approach for computer-aided detection of brain metastases in post-Gd T1-W MRI. *Magnetic resonance imaging*, 30(6):824–836.

- Fayed, N., Dávila, J., Medrano, J., and Olmos, S. (2008). Malignancy assessment of brain tumours with magnetic resonance spectroscopy and dynamic susceptibility contrast MRI. *European journal of radiology*, 67(3):427–33.
- Fennema-Notestine, C., Ozyurt, I. B., Clark, C. P., Morris, S., Bischoff-Grethe, A., Bondi, M. W., Jernigan, T. L., Fischl, B., Segonne, F., Shattuck, D. W., Leahy, R. M., Rex, D. E., Toga, A. W., Zou, K. H., and Brown, G. G. (2006). Quantitative evaluation of automated skull-stripping methods applied to contemporary and legacy images: effects of diagnosis, bias correction, and slice location. *Human brain mapping*, 27(2):99–113.
- Fletcher-Heath, L. M., Hall, L. O., Goldgof, D. B., and Murtagh, F. R. (2001). Automatic segmentation of non-enhancing brain tumors in magnetic resonance images. *Artificial intelligence in medicine*, 21(1-3):43–63.
- Gao, Y., Kikinis, R., Bouix, S., Shenton, M., and Tannenbaum, A. (2012). A 3D Interactive Multi-object Segmentation Tool using Local Robust Statistics Driven Active Contours. *Medical Image Analysis*, 16(6):1216–1227.
- García-Lorenzo, D., Francis, S., Narayanan, S., Arnold, D. L., and Collins, D. L. (2013). Review of automatic segmentation methods of multiple sclerosis white matter lesions on conventional magnetic resonance imaging. *Medical image analysis*, 17(1):1–18.
- Georgiadis, P., Kostopoulos, S., Cavouras, D., Glotsos, D., Kalatzis, I., Sifaki, K., Malamas, M., Solomou, E., and Nikiforidis, G. (2011). Quantitative combination of volumetric MR imaging and MR spectroscopy data for the discrimination of meningiomas from metastatic brain tumors by means of pattern recognition. *Magnetic resonance imaging*, 29(4):525–35.
- Geremia, E., Menze, B. H., Prastawa, M., Weber, M. A., Criminisi, A., and Ayache, N. (2012). Brain tumor cell density estimation from multi-modal MR images based on a synthetic tumor growth model. In *MICCAI Workshop on Medical Computer Vision*, Nice. Springer LNCS.
- Giese, A., Bjerkgvig, R., Berens, M. E., and Westphal, M. (2003). Cost of migration: invasion of malignant gliomas and implications for treatment. *Journal of clinical oncology : official journal of the American Society of Clinical Oncology*, 21(8):1624–36.
- Gooya, A., Biros, G., and Davatzikos, C. (2011a). Deformable registration of glioma images using EM algorithm and diffusion reaction modeling. *IEEE transactions on medical imaging*, 30(2):375–90.
- Gooya, A., Pohl, K., Bilello, M., Biros, G., and Davatzikos, C. (2011b). Joint Segmentation and Deformable Registration of Brain Scans Guided by a Tumor Growth Model. In Fichtinger, G., Martel, A., and Peters, T. M., editors, *Medical Image Computing and Computer-Assisted Intervention: MICCAI 2011*, pages 532–540, Toronto. Springer LNCS.
- Gooya, A., Pohl, K., Bilello, M., Cirillo, L., Biros, G., Melhem, E., and Davatzikos, C.

- (2012). GLISTR: Glioma Image Segmentation and Registration. *IEEE Transactions on Medical Imaging*, 31(10):1941–1954.
- Greenberg, H., Chandler, W., and Sandler, H. (1999). *Brain tumors*. Oxford University Press.
- Hamamci, A., Kucuk, N., Karaman, K., Engin, K., and Unal, G. (2011). Tumor-cut: Segmentation of Brain Tumors on Contrast Enhanced MR Images for Radiosurgery Applications. *IEEE transactions on medical imaging*, 31(3):790–804.
- Hamamci, A., Unal, G., Kucuk, N., and Engin, K. (2010). Cellular automata segmentation of brain tumors on post contrast MR images. *Medical image computing and computer-assisted intervention : MICCAI ... International Conference on Medical Image Computing and Computer-Assisted Intervention*, 13(Pt 3):137–46.
- Harati, V., Khayati, R., and Farzan, A. (2011). Fully automated tumor segmentation based on improved fuzzy connectedness algorithm in brain MR images. *Computers in biology and medicine*, 41(7):483–92.
- Henson, J. W., Ulmer, S., and Harris, G. J. (2008). Brain Tumor Imaging in Clinical Trials. *AJNR. American journal of neuroradiology*, 29(3):419–24.
- Ho, S., Bullitt, E., and Gerig, G. (2002). Level-set evolution with region competition: automatic 3-D segmentation of brain tumors. In *Pattern Recognition*, volume 1, pages 532–535. IEEE.
- Hogea, C., Biros, G., Abraham, F., and Davatzikos, C. (2007a). A robust framework for soft tissue simulations with application to modeling brain tumor mass effect in 3D MR images. *Physics in medicine and biology*, 52(23):6893–908.
- Hogea, C., Davatzikos, C., and Biros, G. (2007b). Modeling glioma growth and mass effect in 3D MR images of the brain. *Medical image computing and computer-assisted intervention : MICCAI*, 10(Pt 1):642–50.
- Hogea, C., Davatzikos, C., and Biros, G. (2008a). An image-driven parameter estimation problem for a reaction-diffusion glioma growth model with mass effects. *Journal of mathematical biology*, 56(6):793–825.
- Hogea, C., Davatzikos, C., and Biros, G. (2008b). BrainTumor Interaction Biophysical Models for Medical Image Registration. *SIAM Journal on Scientific Computing*, 30(6):3050.
- Hsieh, T. M., Liu, Y.-M., Liao, C.-C., Xiao, F., Chiang, I.-J., and Wong, J.-M. (2011). Automatic segmentation of meningioma from non-contrasted brain MRI integrating fuzzy clustering and region growing. *BMC medical informatics and decision making*, 11(1):54.
- Isambert, A., Dhermain, F., Bidault, F., Commowick, O., Bondiau, P.-Y., Malandain, G., and Lefkopoulos, D. (2008). Evaluation of an atlas-based automatic segmentation software for the delineation of brain organs at risk in a radiation therapy clinical context. *Radiotherapy and oncology : journal of the European Society for Therapeutic Radiology and Oncology*, 87(1):93–9.

- Jensen, T. R. and Schmainda, K. M. (2009). Computer-aided detection of brain tumor invasion using multiparametric MRI. *Journal of magnetic resonance imaging : JMRI*, 30(3):481–9.
- Kanally, C. W., Ding, D., Mehta, A. I., Waller, A. F., Crocker, I., Desjardins, A., Reardon, D. A., Friedman, A. H., Bigner, D. D., and Sampson, J. H. (2011). A novel method for volumetric MRI response assessment of enhancing brain tumors. *PLoS one*, 6(1):e16031.
- Kansal, A. R., Torquato, S., Harsh GR, I. V., Chiocca, E. A., and Deisboeck, T. S. (2000). Simulated brain tumor growth dynamics using a three-dimensional cellular automaton. *Journal of theoretical biology*, 203(4):367–82.
- Kassner, A. and Thornhill, R. E. (2010). Texture analysis: a review of neurologic MR imaging applications. *AJNR. American journal of neuroradiology*, 31(5):809–16.
- Kaus, M. R., Warfield, S. K., Nabavi, A., Black, P. M., Jolesz, F. A., and Kikinis, R. (2001). Automated segmentation of MR images of brain tumors. *Radiology*, 218(2):586–91.
- Kelly, P. J., Daumas-Duport, C., Kispert, D. B., Kall, B. a., Scheithauer, B. W., and Illig, J. J. (1987). Imaging-based stereotaxic serial biopsies in untreated intracranial glial neoplasms. *Journal of neurosurgery*, 66(6):865–74.
- Khotanlou, H., Colliot, O., Atif, J., and Bloch, I. (2009). 3D brain tumor segmentation in MRI using fuzzy classification, symmetry analysis and spatially constrained deformable models. *Fuzzy Sets and Systems*, 160(10):1457–1473.
- Kikinis, R. and Pieper, S. (2011). 3D Slicer as a tool for interactive brain tumor segmentation. *Annual International Conference of the IEEE Engineering in Medicine and Biology Society.*, 2011:6982–4.
- Kindermann, R. and Snell, J. (1980). *Markov random fields and their applications*. American Mathematical Society Providence, Rhode Island.
- Kleihues, P., Burger, P. C., and Scheithauer, B. W. (1993). The new WHO classification of brain tumours. *Brain pathology (Zurich, Switzerland)*, 3(3):255–68.
- Klein, A., Andersson, J., Ardekani, B. a., Ashburner, J., Avants, B., Chiang, M.-C., Christensen, G. E., Collins, D. L., Gee, J., Hellier, P., Song, J. H., Jenkinson, M., Lepage, C., Rueckert, D., Thompson, P., Vercauteren, T., Woods, R. P., Mann, J. J., and Parsey, R. V. (2009). Evaluation of 14 nonlinear deformation algorithms applied to human brain MRI registration. *NeuroImage*, 46(3):786–802.
- Kohler, B. A., Ward, E., McCarthy, B. J., Schymura, M. J., Ries, L. A. G., Ehemann, C., Jemal, A., Anderson, R. N., Ajani, U. A., and Edwards, B. K. (2011). Annual report to the nation on the status of cancer, 1975–2007, featuring tumors of the brain and other nervous system. *Journal of the National Cancer Institute*, 103(9):714–36.
- Konukoglu, E., Clatz, O., Menze, B. H., Stieltjes, B., Weber, M.-A., Mandonnet, E., Delingette, H., and Ayache, N. (2010). Image guided personalization of reaction-

- diffusion type tumor growth models using modified anisotropic eikonal equations. *IEEE transactions on medical imaging*, 29(1):77–95.
- Konukoglu, E., Wells, W., Novellas, S., Ayache, N., Kikinis, R., Black, P., and Pohl, K. (2008). Monitoring slowly evolving tumors. In *IEEE ISBI 2008*, pages 812–815. IEEE.
- Krex, D., Klink, B., Hartmann, C., von Deimling, A., Pietsch, T., Simon, M., Sabel, M., Steinbach, J. P., Heese, O., Reifenberger, G., Weller, M., and Schackert, G. (2007). Long-term survival with glioblastoma multiforme. *Brain : a journal of neurology*, 130(Pt 10):2596–606.
- Kumar, S. and Hebert, M. (2006). Discriminative Random Fields. *International Journal of Computer Vision*, 68(2):179–201.
- Kyriacou, S. K., Davatzikos, C., Zinreich, S. J., and Bryan, R. N. (1999). Nonlinear elastic registration of brain images with tumor pathology using a biomechanical model. *IEEE transactions on medical imaging*, 18(7):580–92.
- Lafferty, J., McCallum, A., and Pereira, F. (2001). Conditional random fields: Probabilistic models for segmenting and labeling sequence data. In *Proceedings of the Eighteenth International Conference on Machine Learning*, pages 282–289. ACM.
- Lamecker, H. and Pennec, X. (2010). Atlas to Image-with-Tumor Registration based on Demons and Deformation Inpainting. In *MICCAI Workshop on Computational Imaging Biomarkers for Tumors-From Qualitative to Quantitative*, Beijing.
- Law, M. (2009). Advanced imaging techniques in brain tumors. *Cancer imaging : the official publication of the International Cancer Imaging Society*, 9 Spec:S4–9.
- Lee, C.-H., Wang, S., Murtha, A., Brown, M. R. G., and Greiner, R. (2008). Segmenting brain tumors using pseudo-conditional random fields. *Medical image computing and computer-assisted intervention : MICCAI*, 11(Pt 1):359–66.
- Lepetit, V., Lagger, P., and Fua, P. (2005). Randomized trees for real-time keypoint recognition. In *Computer Vision and Pattern Recognition*, volume 2, pages 775–781. IEEE.
- Levy, M. A. and Rubin, D. L. (2011). Current and future trends in imaging informatics for oncology. *Cancer journal (Sudbury, Mass.)*, 17(4):203–10.
- Li, X., Long, X., Laurienti, P., and Wyatt, C. (2011). Registration of Images With Varying Topology Using Embedded Maps. *IEEE transactions on medical imaging*, 31(3):749–765.
- Liang, Z.-P. and Lauterbur, P. C. (2000). *Principles of Magnetic Resonance Imaging: A signal processing perspective*. Wiley - IEEE Press.
- Luts, J., Heerschap, A., Suykens, J. A. K., and Van Huffel, S. (2007). A combined MRI and MRSI based multiclass system for brain tumour recognition using LS-SVMs with class probabilities and feature selection. *Artificial intelligence in medicine*, 40(2):87–102.

- Macdonald, D. R., Cascino, T. L., Schold, S. C., and Cairncross, J. G. (1990). Response criteria for phase II studies of supratentorial malignant glioma. *Journal of clinical oncology : official journal of the American Society of Clinical Oncology*, 8(7):1277–80.
- Maintz, J. and Viergever, M. A. (1998). A survey of medical image registration. *Medical Image Analysis*, 2(1):1–36.
- Mang, A., Schnabel, J. A., Crum, W. R., Modat, M., Camara-Rey, O., Palm, C., Caseiras, G. B., Jäger, H. R., Ourselin, S., Buzug, T. M., and Hawkes, D. J. (2008). Consistency of parametric registration in serial MRI studies of brain tumor progression. *International Journal of Computer Assisted Radiology and Surgery*, 3(3-4):201–211.
- Marias, K., Dionysiou, D., Sakkalis, V., Graf, N., Bohle, R. M., Coveney, P. V., Wan, S., Folarin, A., Buchler, P., Reyes, M., Clapworthy, G., Liu, E., Sabczynski, J., Bily, T., Roniotis, A., Tsiknakis, M., Kolokotroni, E., Giatili, S., Veith, C., Messe, E., Stenzhorn, H., Kim, Y.-J., Zasada, S., Haidar, A. N., May, C., Bauer, S., Wang, T., Zhao, Y., Karasek, M., Grewer, R., Franz, A., and Stamatakos, G. (2011). Clinically driven design of multi-scale cancer models: the ContraCancrum project paradigm. *Journal of the Royal Society - Interface Focus*, 1(3):450–461.
- May, C. P., Kolokotroni, E., Stamatakos, G. S., and Büchler, P. (2011). Coupling biomechanics to a cellular level model: an approach to patient-specific image driven multi-scale and multi-physics tumor simulation. *Progress in biophysics and molecular biology*, 107(1):193–9.
- Mazzara, G. P., Velthuisen, R. P., Pearlman, J. L., Greenberg, H. M., and Wagner, H. (2004). Brain tumor target volume determination for radiation treatment planning through automated MRI segmentation. *International journal of radiation oncology, biology, physics*, 59(1):300–312.
- McInerney, T. and Terzopoulos, D. (1996). Deformable models in medical image analysis: a survey. *Medical Image Analysis*, 1(2):91–108.
- Menze, B. H., Van Leemput, K., Honkela, A., Konukoglu, E., Weber, M.-A., Ayache, N., and Golland, P. (2011). A generative approach for image-based modeling of tumor growth. In *Information processing in medical imaging*, volume 22, pages 735–47. Springer.
- Menze, B. H., Van Leemput, K., Lashkari, D., Weber, M.-A., Ayache, N., and Golland, P. (2010). A generative model for brain tumor segmentation in multi-modal images. *Medical image computing and computer-assisted intervention : MICCAI*, 13(Pt 2):151–9.
- Mohamed, A., Zacharaki, E. I., Shen, D., and Davatzikos, C. (2006). Deformable registration of brain tumor images via a statistical model of tumor-induced deformation. *Medical image analysis*, 10(5):752–63.
- Moon, N., Bullitt, E., Van Leemput, K., and Gerig, G. (2002). Automatic brain tumor segmentation. In *MICCAI LNCS*, volume 10, pages 372–379. Springer.

- Neal, M. L. and Kerckhoffs, R. (2010). Current progress in patient-specific modeling. *Briefings in bioinformatics*, 11(1):111–126.
- Nie, J., Xue, Z., Liu, T., Young, G. S., Setayesh, K., Guo, L., and Wong, S. T. C. (2009). Automated brain tumor segmentation using spatial accuracy-weighted hidden Markov Random Field. *Computerized medical imaging and graphics : the official journal of the Computerized Medical Imaging Society*, 33(6):431–41.
- Niethammer, M., Hart, G. L., Pace, D. F., Vespa, P. M., Irimia, A., van Horn, J. D., and Aylward, S. R. (2011). Geometric Metamorphosis. In Fichtinger, G., Martel, A., and Peters, T. M., editors, *MICCAI - Medical Image Computing and Computer Assisted Interventions*, pages 639–646, Toronto. Springer LNCS.
- Nyúl, L. G. and Udupa, J. K. (1999). On standardizing the MR image intensity scale. *Magnetic resonance in medicine : official journal of the Society of Magnetic Resonance in Medicine*, 42(6):1072–81.
- Parisot, S., Duffau, H., Chemouny, S., and Paragios, N. (2011). Graph Based Spatial Position Mapping of Low-Grade Gliomas. In Fichtinger, G., Martel, A., and Peters, T. M., editors, *Medical Image Computing and Computer-Assisted Intervention MICCAI*, pages 508–515, Toronto. Springer LNCS.
- Parisot, S., Duffau, H., Chemouny, S., and Paragios, N. (2012). Joint Tumor Segmentation and Dense Deformable Registration of Brain MR Images. In Ayache, N., editor, *MICCAI International Conference on Medical Image Computing and Computer Assisted Interventions*, pages 651–658, Nice. Springer LNCS.
- Pham, D., Xu, C., and Prince, J. (2000). Current Methods in Medical Image Segmentation. *Annual review of biomedical engineering*, 2(1):315–337.
- Phillips, W. E., Velthuizen, R. P., Phuphanich, S., Hall, L. O., Clarke, L. P., and Silbiger, M. L. (1995). Application of fuzzy c-means segmentation technique for tissue differentiation in MR images of a hemorrhagic glioblastoma multiforme. *Magnetic resonance imaging*, 13(2):277–90.
- Plate, K. H. and Risau, W. (1995). Angiogenesis in malignant gliomas. *Glia*, 15(3):339–47.
- Pohl, K. M., Konukoglu, E., Novellas, S., Ayache, N., Fedorov, A., Talos, I.-F., Golby, A., Wells, W. M., Kikinis, R., and Black, P. M. (2011). A new metric for detecting change in slowly evolving brain tumors: validation in meningioma patients. *Neurosurgery*, 68(1 Suppl Operative):225–33.
- Pollo, C., Cuadra, M. B., Cuisenaire, O., Villemure, J.-G., and Thiran, J.-P. (2005). Segmentation of brain structures in presence of a space-occupying lesion. *NeuroImage*, 24(4):990–6.
- Pope, W. B. and Hessel, C. (2011). Response assessment in neuro-oncology criteria: implementation challenges in multicenter neuro-oncology trials. *AJNR. American journal of neuroradiology*, 32(5):794–7.

- Popuri, K., Cobzas, D., Murtha, A., and Jägersand, M. (2012). 3D variational brain tumor segmentation using Dirichlet priors on a clustered feature set. *International journal of computer assisted radiology and surgery*, 7(4):493–506.
- Prastawa, M., Bullitt, E., and Gerig, G. (2009). Simulation of brain tumors in MR images for evaluation of segmentation efficacy. *Medical image analysis*, 13(2):297–311.
- Prastawa, M., Bullitt, E., Ho, S., and Gerig, G. (2004). A brain tumor segmentation framework based on outlier detection. *Medical image analysis*, 8(3):275–83.
- Prastawa, M., Bullitt, E., Moon, N., Van Leemput, K., and Gerig, G. (2003). Automatic brain tumor segmentation by subject specific modification of atlas priors. *Academic Radiology*, 10(12):1341–1348.
- Rexilius, J., Hahn, H. K., Klein, J., Lentschig, M. G., and Peitgen, H.-O. (2007). Multispectral brain tumor segmentation based on histogram model adaptation. *Proceedings of SPIE*, pages 65140V–65140V–10.
- Ruan, S., Lebonvallet, S., Merabet, A., and Constans, J.-M. (2007). Tumor Segmentation From a Multispectral MRI Images By Using Support Vector Machine Classification. In *4th IEEE International Symposium on Biomedical Imaging: From Nano to Macro*, volume 2, pages 1236–1239. IEEE.
- Ruan, S., Zhang, N., Liao, Q., and Zhu, Y. (2011). Image fusion for following-up brain tumor evolution. In *Proceedings of ISBI*, pages 281–284, Chicago. IEEE.
- Sachdeva, J., Kumar, V., Gupta, I., Khandelwal, N., and Ahuja, C. K. (2012). A novel content-based active contour model for brain tumor segmentation. *Magnetic resonance imaging*, 30(5):694–715.
- Saha, B. N., Ray, N., Greiner, R., Murtha, A., and Zhang, H. (2011). Quick detection of brain tumors and edemas: A bounding box method using symmetry. *Computerized medical imaging and graphics*, 36(2):95–107.
- Schad, L. R., Blüml, S., and Zuna, I. (1993). MR tissue characterization of intracranial tumors by means of texture analysis. *Magnetic resonance imaging*, 11(6):889–96.
- Schmidt, M., Levner, I., Greiner, R., Murtha, A., and Bistritz, A. (2005). Segmenting brain tumors using alignment-based features. In *Machine Learning and Applications, Fourth International Conference on*, pages 1–6. IEEE.
- Schoelkopf, B. and Smola, A. (2002). *Learning with kernels: support vector machines, regularization, optimization, and beyond*. MIT Press.
- Shotton, J., Fitzgibbon, A., Cook, M., Sharp, T., Finocchio, M., Moore, R., Kipman, A., and Blake, A. (2011). Real-time human pose recognition in parts from single depth images. In *CVPR 2011*, pages 1297–1304. IEEE.
- Skounakis, E., Farmaki, C., Sakkalis, V., Roniotis, A., Banitsas, K., Graf, N., and Marias, K. (2010). DoctorEye: A Clinically Driven Multifunctional Platform, for Accurate Processing of Tumors in Medical Images. *Open Medical Informatics Journal*, 4:105–115.

- Slotboom, J., Schaer, R., Ozdoba, C., Reinert, M., Vajtai, I., El-Koussy, M., Kiefer, C., Zbinden, M., Schroth, G., and Wiest, R. (2008). A novel method for analyzing DSCE-images with an application to tumor grading. *Investigative radiology*, 43(12):843–53.
- Sotiras, A., Davatzikos, C., and Paragios, N. (2012). Deformable Image Registration : A Survey. Technical report, INRIA.
- Speier, W., Iglesias, J., El-Kara, L., Tu, Z., and Arnold, C. (2011). Robust Skull Stripping of Clinical Glioblastoma Multiforme Data. In Fichtinger, G., Martel, A., and Peters, editors, *MICCAI - Medical Image Computing and Computer Assisted Interventions*, volume 6893, pages 659–666, Toronto. Springer LNCS.
- Stamatakis, G. S., Dionysiou, D. D., Graf, N. M., Sofra, N. A., Desmedt, C., Hoppe, A., Uzunoglu, N. K., and Tsiknakis, M. (2007). The "Oncosimulator": a multilevel, clinically oriented simulation system of tumor growth and organism response to therapeutic schemes. Towards the clinical evaluation of in silico oncology. *Annual International Conference of the IEEE Engineering in Medicine and Biology Society.*, 2007:6629–32.
- Stamatakis, G. S., Kolokotroni, E., Dionysiou, D., Georgiadi, E., and Desmedt, C. (2010). An advanced discrete state-discrete event multiscale simulation model of the response of a solid tumor to chemotherapy: Mimicking a clinical study. *Journal of theoretical biology*, 266(1):124–39.
- Stefanescu, R., Commowick, O., Malandain, G., Bondiau, P.-Y., Ayache, N., and Pennec, X. (2004). Non-rigid atlas to subject registration with pathologies for conformal brain radiotherapy. *Medical Image Computing and Computer-Assisted Intervention, MICCAI 2004*, 3216:704–711.
- Stupp, R., Hegi, M. E., Mason, W. P., van den Bent, M. J., Taphoorn, M. J. B., Janzer, R. C., Ludwin, S. K., Allgeier, A., Fisher, B., Belanger, K., Hau, P., Brandes, A. A., Gijtenbeek, J., Marosi, C., Vecht, C. J., Mokhtari, K., Wesseling, P., Villa, S., Eisenhauer, E., Gorlia, T., Weller, M., Lacombe, D., Cairncross, J. G., and Mirimanoff, R.-O. (2009). Effects of radiotherapy with concomitant and adjuvant temozolomide versus radiotherapy alone on survival in glioblastoma in a randomised phase III study: 5-year analysis of the EORTC-NCIC trial. *The lancet oncology*, 10(5):459–66.
- Styner, M., Lee, J., Chin, B., and Chin, M. (2008). 3D segmentation in the clinic: A grand challenge II: MS lesion segmentation. *MIDAS Journal*, 2008:1–6.
- Swanson, K. R., Alvord, E. C., and Murray, J. D. (2000). A quantitative model for differential motility of gliomas in grey and white matter. *Cell proliferation*, 33(5):317–29.
- Swanson, K. R., Alvord, E. C., and Murray, J. D. (2002). Virtual brain tumours (gliomas) enhance the reality of medical imaging and highlight inadequacies of current therapy. *British journal of cancer*, 86(1):14–8.
- Therasse, P., Arbutck, S. G., Eisenhauer, E. A., Wanders, J., Kaplan, R. S., Rubinstein, L., Verweij, J., Van Glabbeke, M., van Oosterom, A. T., Christian, M. C., and

- Gwyther, S. G. (2000). New guidelines to evaluate the response to treatment in solid tumors. European Organization for Research and Treatment of Cancer, National Cancer Institute of the United States, National Cancer Institute of Canada. *Journal of the National Cancer Institute*, 92(3):205–16.
- Thévenaz, P., Blu, T., and Unser, M. (2000). Interpolation revisited. *IEEE transactions on medical imaging*, 19(7):739–58.
- Tovi, M. (1993). MR imaging in cerebral gliomas analysis of tumour tissue components. *Acta radiologica. Supplementum*, 384:1–24.
- Tuceryan, M. and Jain, A. (1998). Texture analysis. In Chen, C., Pau, L., and Wang, P., editors, *Handbook of Pattern Recognition and Computer Vision*, volume 304, pages 207–248. World Scientific Publishing Co, 2nd edition.
- Vaidyanathan, M. (1995). Comparison of supervised MRI segmentation methods for tumor volume determination during therapy. *Magnetic Resonance Imaging*, 13(5):719–728.
- Verma, R., Zacharaki, E. I., Ou, Y., Cai, H., Chawla, S., Lee, S.-K., Melhem, E. R., Wolf, R., and Davatzikos, C. (2008). Multiparametric tissue characterization of brain neoplasms and their recurrence using pattern classification of MR images. *Academic radiology*, 15(8):966–77.
- Vovk, U., Pernus, F., and Likar, B. (2007). A review of methods for correction of intensity inhomogeneity in MRI. *IEEE transactions on medical imaging*, 26(3):405–21.
- Wang, S. and Summers, R. M. (2012). Machine Learning and Radiology. *Medical Image Analysis*, 16(5):933–951.
- Wang, T., Cheng, I., and Basu, A. (2009). Fluid vector flow and applications in brain tumor segmentation. *IEEE transactions on bio-medical engineering*, 56(3):781–9.
- Warfield, S. K., Zou, K. H., and Wells, W. M. (2004). Simultaneous truth and performance level estimation (STAPLE): an algorithm for the validation of image segmentation. *IEEE transactions on medical imaging*, 23(7):903–21.
- Weickert, J. (1998). *Anisotropic Diffusion in Image Processing*. Teubner Stuttgart, 1 edition.
- Weizman, L., Ben Sira, L., Joskowicz, L., Constantini, S., Precel, R., Shofty, B., and Ben Bashat, D. (2012). Automatic segmentation, internal classification, and follow-up of optic pathway gliomas in MRI. *Medical image analysis*, 16(1):177–88.
- Wels, M., Carneiro, G., Aplas, A., Huber, M., Hornegger, J., and Comaniciu, D. (2008). A discriminative model-constrained graph cuts approach to fully automated pediatric brain tumor segmentation in 3-D MRI. *Medical image computing and computer-assisted intervention : MICCAI*, 11(Pt 1):67–75.
- Weltens, C., Menten, J., Feron, M., Bellon, E., Demaerel, P., Maes, F., Van den Bogaert, W., and van der Schueren, E. (2001). Interobserver variations in gross tumor volume delineation of brain tumors on computed tomography and impact of

- magnetic resonance imaging. *Radiotherapy and oncology : journal of the European Society for Therapeutic Radiology and Oncology*, 60(1):49–59.
- Wen, P. Y., Macdonald, D. R., Reardon, D. A., Cloughesy, T. F., Sorensen, A. G., Galanis, E., Degroot, J., Wick, W., Gilbert, M. R., Lassman, A. B., Tsien, C., Mikkelsen, T., Wong, E. T., Chamberlain, M. C., Stupp, R., Lamborn, K. R., Vogelbaum, M. A., van den Bent, M. J., and Chang, S. M. (2010). Updated response assessment criteria for high-grade gliomas: response assessment in neuro-oncology working group. *Journal of clinical oncology : official journal of the American Society of Clinical Oncology*, 28(11):1963–72.
- Wittek, A., Miller, K., Kikinis, R., and Warfield, S. K. (2007). Patient-specific model of brain deformation: application to medical image registration. *Journal of biomechanics*, 40(4):919–29.
- Xu, Z., Asman, A. J., Singh, E., Chambless, L., Thompson, R., and Landman, B. A. (2012). Collaborative Labeling of Malignant Glioma. In *International Symposium on Biomedical Imaging*, pages 1148–1151, Barcelona. IEEE.
- Zacharaki, E. I., Hoge, C. S., Biros, G., and Davatzikos, C. (2008a). A comparative study of biomechanical simulators in deformable registration of brain tumor images. *IEEE transactions on bio-medical engineering*, 55(3):1233–6.
- Zacharaki, E. I., Hoge, C. S., Shen, D., Biros, G., and Davatzikos, C. (2009a). Non-diffeomorphic registration of brain tumor images by simulating tissue loss and tumor growth. *NeuroImage*, 46(3):762–774.
- Zacharaki, E. I., Kanas, V. G., and Davatzikos, C. (2011). Investigating machine learning techniques for MRI-based classification of brain neoplasms. *International journal of computer assisted radiology and surgery*, 6(6):821–828.
- Zacharaki, E. I., Shen, D., Lee, S.-K., and Davatzikos, C. (2008b). ORBIT: a multiresolution framework for deformable registration of brain tumor images. *IEEE transactions on medical imaging*, 27(8):1003–17.
- Zacharaki, E. I., Wang, S., Chawla, S., Soo Yoo, D., Wolf, R., Melhem, E. R., and Davatzikos, C. (2009b). Classification of brain tumor type and grade using MRI texture and shape in a machine learning scheme. *Magnetic resonance in medicine : official journal of the Society of Magnetic Resonance in Medicine*, 62(6):1609–18.
- Zhu, Y., Young, G. S., Xue, Z., Huang, R. Y., You, H., Setayesh, K., Hatabu, H., Cao, F., and Wong, S. T. (2012). Semi-Automatic Segmentation Software for Quantitative Clinical Brain Glioblastoma Evaluation. *Academic radiology*, (10):1–9.
- Zikic, D., Glocker, B., Konukoglu, E., Criminisi, A., Demiralp, C., Shotton, J., Thomas, O. M., Das, T., Rena, R., and Price, S. J. (2012). Decision Forests for Tissue-specific Segmentation of High-grade Gliomas in Multi-channel MR. In *MICCAI - Medical Image Computing and Computer Assisted Interventions*, volume 7512, pages 369–376, Nice. Springer LNCS.

- Zöllner, F. G., Emblem, K. E., and Schad, L. R. (2010). Support vector machines in DSC-based glioma imaging: suggestions for optimal characterization. *Magnetic resonance in medicine*, 64(4):1230–6.
- Zou, K. H., Wells, W. M., Kikinis, R., and Warfield, S. K. (2004). Three validation metrics for automated probabilistic image segmentation of brain tumours. *Statistics in medicine*, 23(8):1259–82.