

Configuring Your Operator Panel

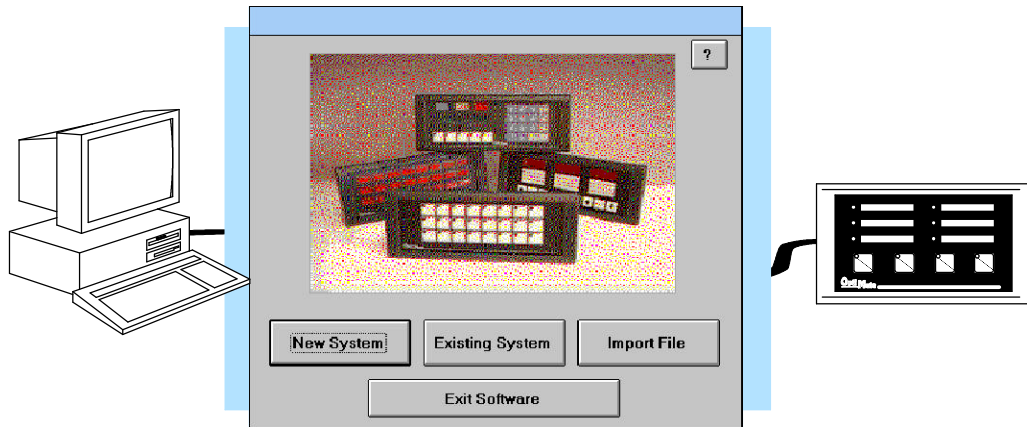
In This Chapter. . . .

- Preparing for Configuration
- How to Configure Your Panel

Preparing for Configuration

OP-WINEDIT Software

The OP-406 is configured with software running on a personal computer. This software is available through **Automationdirect.com** and is referred to as OP-WINEDIT configuration software.



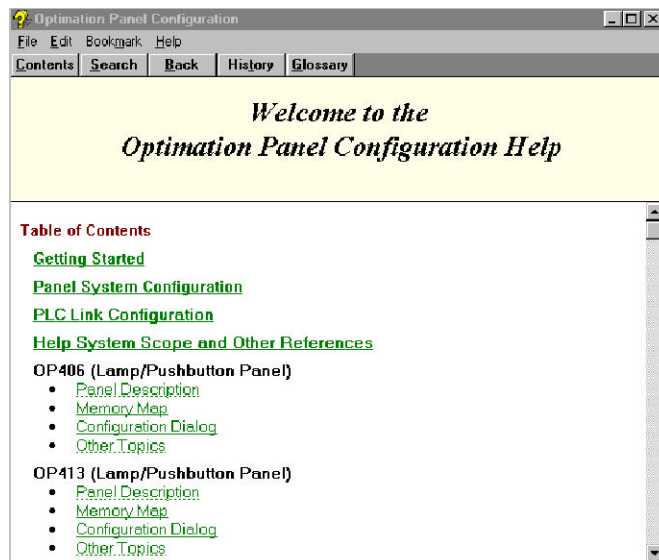
More about OP-WINEDIT

The OP-WINEDIT configuration software allows you to configure OP-panel applications, as well as download (write to panel) and upload (read from panel) the configurations. Use this software to configure your communication link, and select indicator/pushbutton control. Order the software from **Automationdirect.com** using part number OP-WINEDIT. The OP-406 panel requires version 2.3 or later.

HELP Screens

The OP-WINEDIT software provides **Help** windows which supply instructions for performing all necessary configuration tasks. Should you have problems understanding how to program your panel, refer to these built-in Help windows. To access the Help windows, point and click on the Help menu and choose Using help, or click on the [?] icon located near the top of the main configuration window.

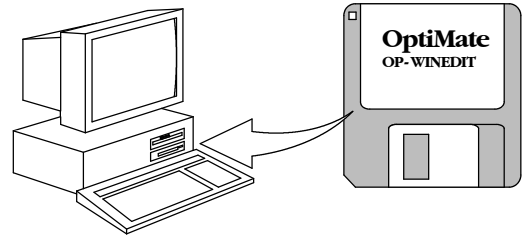
HELP Screen
Menu



Computer System Requirements

Your personal computer must meet the following minimum requirements:

- ✓ IBM type 386 or above
- ✓ **Windows 3.1 or later, including Windows 95, 98 or NT**
- ✓ 1 meg of hard drive
- ✓ 1 meg of RAM

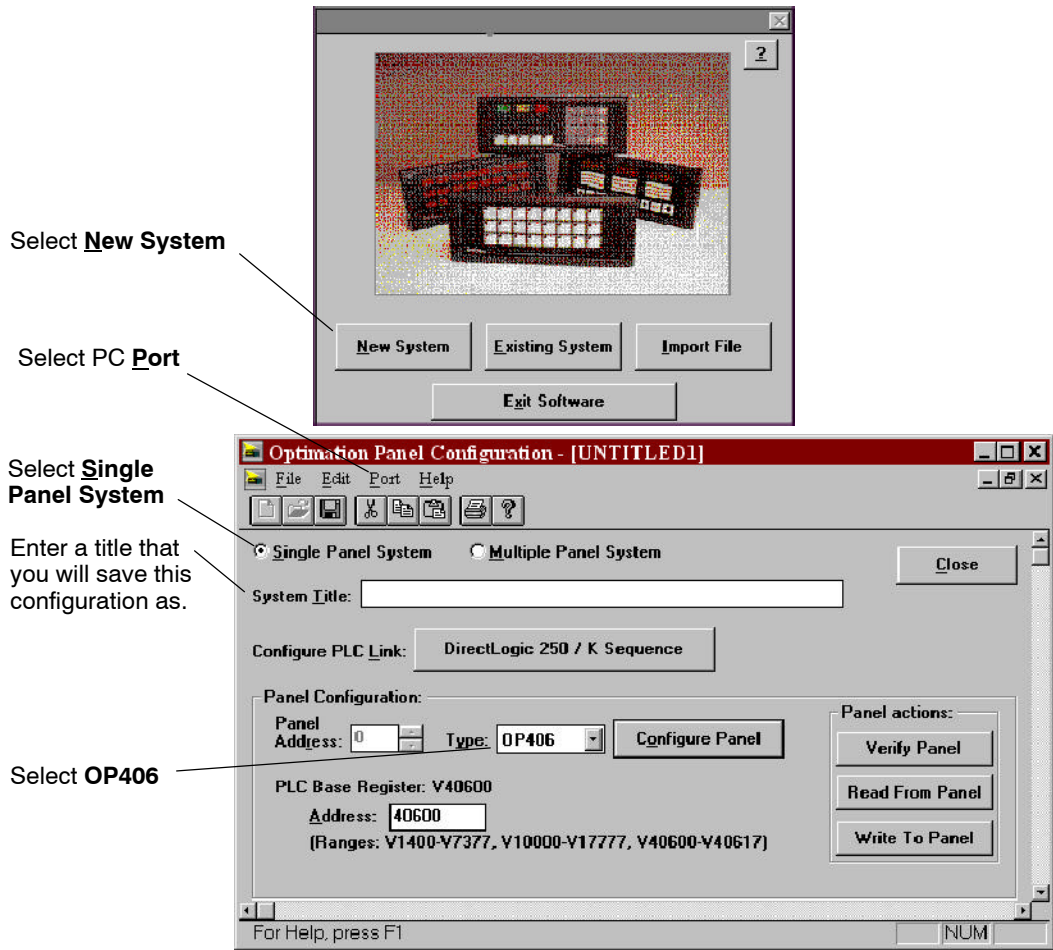


How to Configure Your Panel

Follow these steps to configure your OP-406 operator panel.

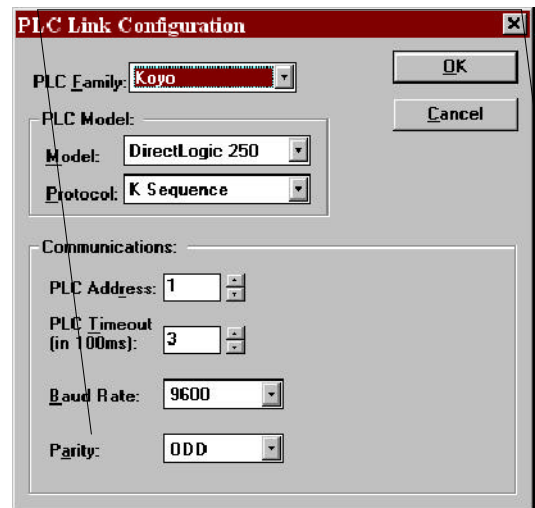
- Step 1 Load OP-WINEDIT** - If you are not already using the configuration software or have an older version, you must install version 2.3 or later (if you are using an older version of OP-WINEDIT you can obtain an upgrade at our web site). The software is provided on one 3-1/2 inch high-density diskette and comes with its own manual. Here are brief installation instructions.
- Place the installation disk into your computer's floppy drive (usually either drive A or drive B).
 - Open Microsoft™ Windows (3.1 or above). For Microsoft Windows 95, 98 or NT the **Start/Run** program task bar is located at the bottom left portion of your screen. For Microsoft Windows 3.x versions select **File/Run** from the Program Manager screen.
 - Select **Run**, and a pop-up window appears. Type in the path for the drive in which you have placed the setup disk and designate the file **setup**. Click on **OK** when you are finished.
- Step 2 Connect Panel to PC** - Connect the OP-406 to a COM port on your personal computer using the OP-CCBL configuration cable. Make sure the OP-PS400 5VDC power supply is connected.

- Step 3** Open **OP-WINEDIT** - Select **New System**.
- Step 4** Start **Configuring Your Panel** - Start by filling in these parameters:



- Step 5** Select **Configure PLC Link** - Here is where you define protocol items such as PLC address, baud rate and parity. Enter the appropriate parameters for your PLC. The following table provides the necessary information for most **DirectLogic** controllers. For other PLC families, reference that product's user manual to determine the port communications capabilities.

During configuration, make sure that your address and communications parameters match the PLC port settings. The PLC **Timeout** works like this: When the panel sends a message to the PLC and does not receive a response or does not understand the response, it will wait the time-out period before resending the message.



You also have several ports which can be used to connect your communications cable. Some of these ports have fixed PLC address assignments, and some *do not*. The ports which allow configuring the PLC addresses can be set to a unique address, ranging from 1 through 90. **Refer to your User Manual for specific information on the ports of your PLC.**



NOTE: For Allen-Bradley, you will need to connect to Channel 0 (bottom serial port), using DF1 full duplex. Additionally, the Allen-Bradley software allows you to set the bottom port to a unique PLC address. The software default is PLC Address 1. You must select CRC error detection and make sure the address on the configuration screen matches the address you have assigned. This port must also be configured for either 4800 or 9600 baud. No other baud rates are supported for communicating between the OP-panels and an Allen-Bradley PLC. Since the Allen-Bradley software uses a default baud rate of 1200, you must change the settings.

PLC Model	Port/Baud Rates	Parity	Stop Bit
DL05	Port 1	9600	Odd
	Port 2	9600/19.2K	Odd/None
DL105/D2-230/ D2-240	Top	9600	Odd
	Bottom	9600/19.2k (DL240 only)	Odd/None
D2-250	Top	9600	Odd/None
	Bottom	9600/19.2K	Odd/None
D3-330	DCU Only*	4800/9600/19.2k	Odd/None
D3-340	Bottom & Top*	4800/9600/19.2k	Odd/None
D3-350	Top*	9600	Odd/None
	Bottom*	4800/9600/19.2K	Odd
D4-430/440	Top	9600	Odd
	Bottom*	9600/19.2k	Odd/None
D4-450	DB15	9600	Odd
	DB25*	9600/19.2k	Odd/None
	RJ12	9600/19.2k	Odd/None

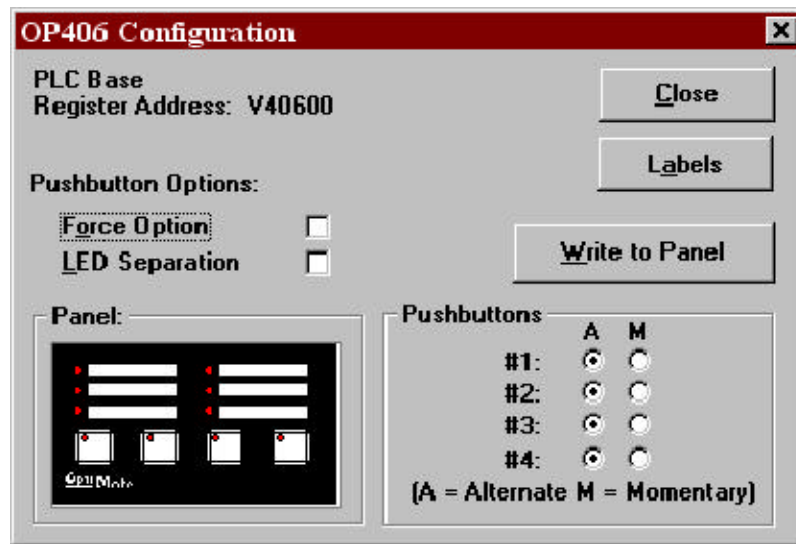
* These ports do not supply +5VDC. You must use the OP-PS400 external power supply.

Step 6 Select the Base Register Address - This step is very important because it establishes the link in your PLC memory to the panel. Chapter 3, Understanding the Features, describes the mapping process. Once you are familiar with the mapping process and you know which memory block in your PLC to use (refer to the user manual for your PLC), enter your selection.

If you choose Allen-Bradley as your PLC Type, you must enter the PLC File Number in addition to a Base Register Address. You must expand the memory map in the Allen-Bradley PLC to include all registers being used by the OP-panel. The panel will only recognize integer file types N7 and user-defined file types N9 through N255. Enter the number only and not the prefix N. The Base Register Address is any number between 0 and 255.

Step 7 Configure the Panel Features - Select Configure Panel. These features are discussed in detail in Chapter 3, but include:

- **Force Option** - Selecting this option allows the PLC ladder program itself to write to a pushbutton bit. If alternate action is selected for any of the pushbuttons, the Force Option should be selected if you want the capability to force the state of an alternate action pushbutton on or off without touching the panel.
- **LED Separation** - The pushbuttons can be configured as either momentary or alternate action. If momentary is selected for any pushbuttons, select LED Separation if you want the LEDs inset in all of the momentary pushbuttons to act independently of the button status.



Step 8 Save and Download - Once you have completed your configuration, you can save it to disk and/or write (download) directly to the panel.

NOTE: Be sure to select the correct port on your PC (Com 1, 2, 3, 4) in order to Write to the Panel.

