



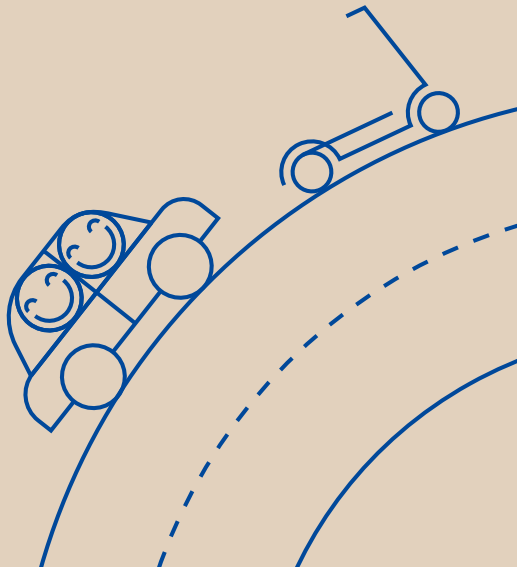
CERN  
**smart  
mobility**



Moving  
forward.

CERN  
**smart  
mobility**

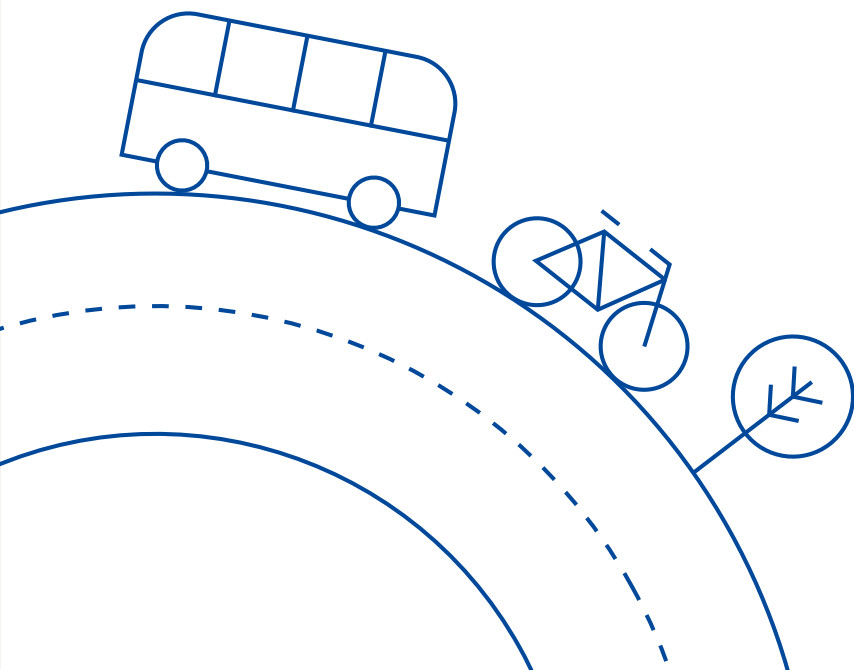
The Smart Mobility programme brings together all of CERN's actions to transform mobility. Its objectives are to make travel comfortable, fluid and responsible, from, towards, between and within the Organization's sites.



# Your individual commitment will allow us to go further.

While considering the specific mobility constraints of our activities and our sites, let's fill our journeys with a dimension of eco-responsibility, in line with CERN's commitments to environmental protection.



Together, let's accelerate the mobility of tomorrow.



# Bicycle or electric scooter. Quickly by the handlebars.

CERN has a fleet of self-service electric bicycles and scooters, which can be used free of charge to travel within or between the Meyrin and Prévessin sites. Install the Mobility Parc application on your smartphone, locate a nearby vehicle, and off you go!

## Available vehicles

<b>80</b> electric bicycles	<b>20</b> electric scooters	<b>Usable for 2 hours 24/7</b>
		<b>Protective equipment required.</b>

Install the Mobility  
Parc application



## DID YOU KNOW?

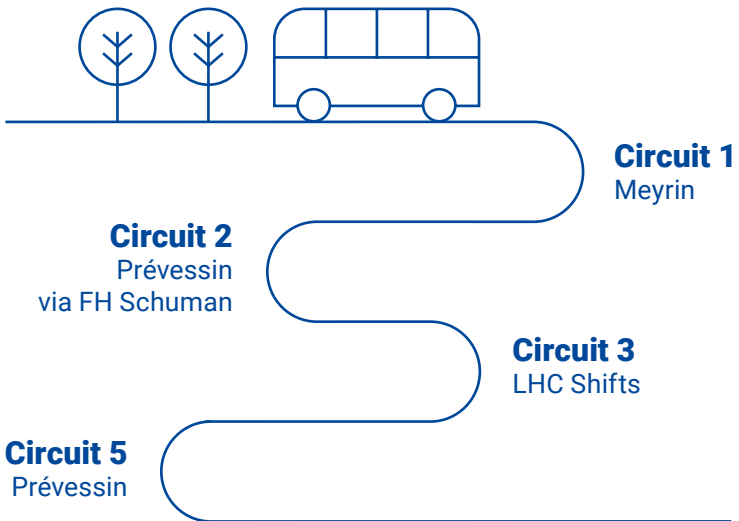
500 regular bikes are available all year round on site. During the summer months, they can be rented for 1 CHF per day, so that cyclists can enjoy them from morning to evening, and also for their private trips.

# Internal bus shuttles. Close to your office.

If you choose internal bus shuttles, particularly for your trips between sites, you help reduce the traffic load on the local road network as well as emissions harmful to the environment and the climate. Take advantage of the journey to work or relax. Our 4 lines will take you safely to your destination.

## Shuttle lines

---

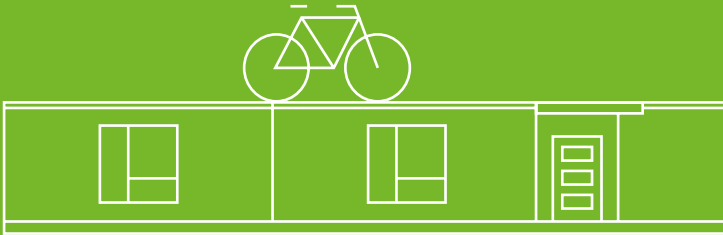


## DID YOU KNOW?

CERN is well served by public transport networks with, in France, two TER lines and three lines on demand and, in Switzerland, five tram and bus lines.



# Mobility Centre. Your internal mobility partner.



**To facilitate the transfer from one mode of transport to another, the Mobility Centre brings together in one place the mobility services offered to all CERN users: scooters, bicycles and cars on loan, rental or self-service.**

The managers of the Mobility Centre can answer your questions about travelling within or between sites. They will be happy to advise you on the different eco-responsible mobility options adapted to your situation.

A workshop offers cyclists valuable recommendations for maintaining and servicing their bicycles, to guarantee safe journeys.

The Mobility Centre is located near entrance A of the Meyrin site.

## Services

---

**Self-service  
electric bikes  
and scooters**



**Loan and rental  
of bicycles**



**Self-service  
and rental cars**



**Organisation and  
coordination of buses  
for group visits**



## Hours

---

Open Monday to Friday

8 a.m. to 5 p.m.

**Tel:** +41 22 767 22 28

**E-mail:** [mobility.service@cern.ch](mailto:mobility.service@cern.ch)

---



# By car, travel with others. A good choice to make.

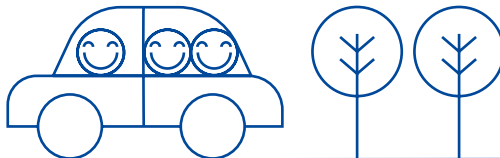
Do you have colleagues participating in the same session in a remote location? Or who live near you and travel to and from CERN every day? To contribute to decarbonization efforts, organise shared trips, with your private vehicle or with self-service cars.

## Play the carpooling card



CERN has partnered with the carpooling platforms **Mov'ici** and **HÉ!LÉMAN**.

These offers are available in the Auvergne-Rhône-Alpes region and French-speaking Switzerland. Sign up!



## DID YOU KNOW?

CERN's self-service thermal vehicles will gradually be replaced by electric cars. By 2030, the Organization's fleet will be mostly decarbonised.



# Do you come by bike? Showers and parking are provided.

CERN brings together a large community of cyclists who commute to work every day using leg strength. They can count on an infrastructure adapted to their needs: 68 showers, 2,600 parking spaces, including 1,100 covered shelters, 15 repair stations, reserved lanes and dedicated access doors on the various sites.

## Find friends and resources



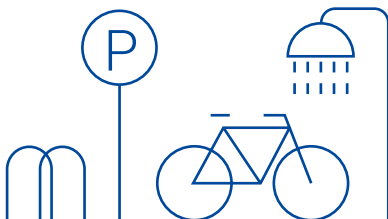
The CERN cycling community  
[bike-to-cern.web.cern.ch](https://bike-to-cern.web.cern.ch)



Pumps locations map  
[maps.cern.ch/mobility/pump](https://maps.cern.ch/mobility/pump)



Showers locations map  
[maps.cern.ch/showers](https://maps.cern.ch/showers)



## DID YOU KNOW?

Every year, the Organization engages in the Bike2Work challenge. In 2023, 1,011 cyclists from the Organization took up the challenge. For the second year in a row, CERN was the largest participant in French-speaking Switzerland.

# CERN smart mobility in figures.

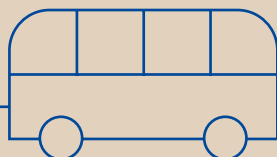


**64 km**

of pedestrian  
networks

**4**

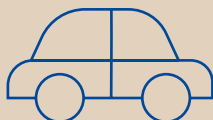
internal  
bus lines



**15**

electric cars  
in service

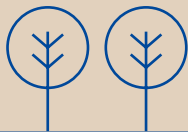
**50%** of the fleet  
electrified  
by 2030



**13 km**

of cycle  
paths





**80**

self-service  
electric bikes

**500**

regular  
bicycles

**20**

self-service  
electric  
scooters



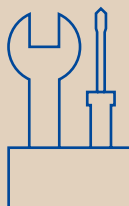
**2,600**

bicycle parking  
spaces, including  
**1,100** covered



**15**

bicycle  
repair  
stations



## DID YOU KNOW?

CERN played a decisive role in the study and construction of the “Route de l’Europe” greenway, linking the Meyrin and Prévessin sites.

