

Small Grants Already Making Big Impact for Washington's Farm-raised Meat Processing

WSDA's Local Meat Processing Capacity Grants program awarded \$3.6 million to small meat processors in March 2022. The program was made possible by one-time funding from the state Legislature. This is a snapshot of impacts as of June 2022, midway point for the grant program. Completed projects are **already making an impact** on meat processing services available for small farms and ranches who sell meat and poultry to Washington consumers.



Small Projects, Big Impacts

- Averaged **\$50,000** per award
- Increased **efficiency, capacity, food safety, humane handling, and workforce capability** of awardees
- Primary goal of the "Small Project" category was to **make big collective impact**, distributed **among many small projects**



Small Projects, Big Multipliers

The completed projects will enable an estimated additional:

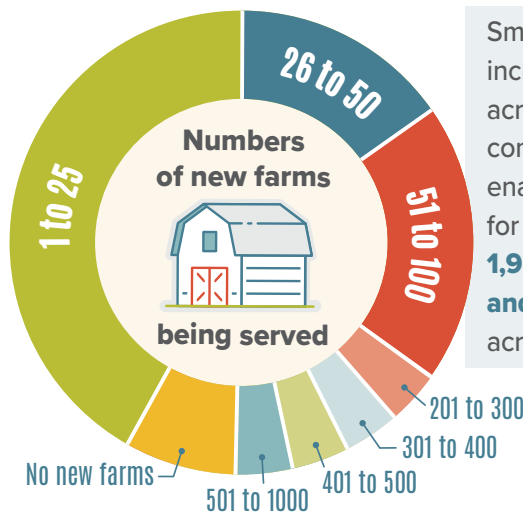
- \$3.5 million** or more *annually* in gross revenue for **meat processing shops**
- \$16 million** or more *annually* in gross revenue for **farms and ranches**
- Representing a multiplier of at least **\$14 annually for every \$1 invested** in grant funds



Farm revenue estimates based on hanging weight prices: beef (\$5/lb), pork (\$6.5/lb), lamb (\$8.5/lb), poultry (\$8/lb).

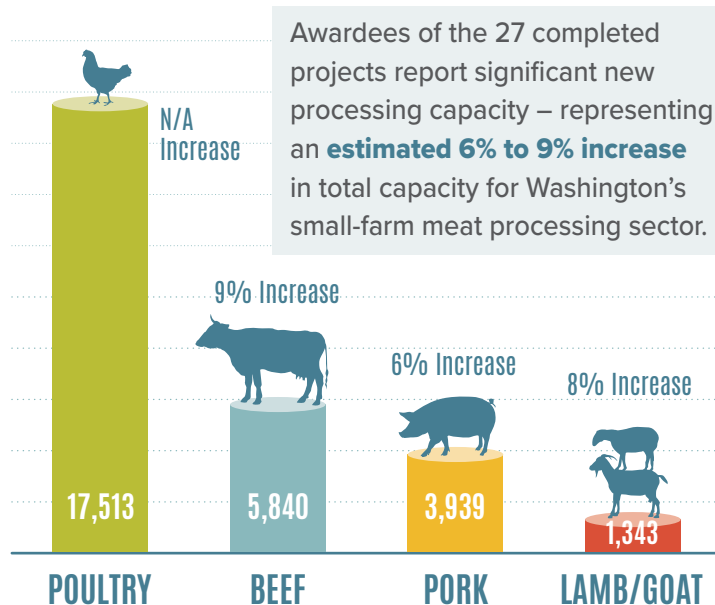
Additional projects to be completed by June 2023:

- 8** "Small Project" grants
- 4** "Large Project" grants to expand access to **USDA-inspected processing** for small farms and ranches across Washington - by an estimated **10,000 farm-raised livestock** per year



Small capacity increases reported across the 27 completed projects enabled processing for an additional **1,925 small farms and ranches** across Washington.

Numbers and percentage increases of small-farm meat processing capacity by animal sector



**Estimates based on self-reported impacts by awardees. To learn more about WSDA's Local Meat Processing Capacity Grants or the Regional Markets Meat & Poultry Assistance Program, visit agr.wa.gov/farmfoodbiz*