

NOVEMBER 18–21, 2024

JW Marriott • Washington, D.C.

INVITATION TO SPONSOR

Organized & Produced by



Five Events. One Location.

KMWWorld 2024

Enterprise Search
& *Discovery*

taxonomy
BOOT CAMP >>>>

Text
ANALYTICS
Forum

ENTERPRISE
AI World

5 *Reasons to* SPONSOR

MEET qualified buyers in a targeted environment.



GAIN industry-wide exposure.



INCREASE brand awareness and come away with more leads.



CREATE new and strengthen existing relationships with clients and other industry experts.



BENEFIT from promotions that reach across four industry events.



KMWWorld²⁰²⁴

taxonomy
BOOT CAMP >>>

Enterprise Search
& Discovery

Text
ANALYTICS
Forum

ENTERPRISE
AI World

NOVEMBER 18-21, 2024

JW Marriott • Washington, D.C.

A NOTE FROM THE EVENT ORGANIZERS

Join us November 18-21, 2024, in Washington, D.C., for the enterprise-focused event of the year featuring **KMWorld**, **Taxonomy Boot Camp**, **Enterprise Search & Discovery**, **Text Analytics Forum**, and **Enterprise AI World**.

KMWorld 2024, along with its co-located events, offers a wide-ranging program especially designed to meet the needs of executives and strategic business and technology decision makers. It is a must-attend for those concerned with improving their organizations' bottom line, business processes, and productivity, as well as streamlining operations and accelerating development and innovation within their evolving enterprises.

The top technologies and solutions will be on display in the Enterprise Solutions Showcase, where attendees from all FIVE events can come together to meet with sponsors about the products, solutions, and services that will help them perform their jobs better.

Don't miss out on this unique opportunity to reach buyers as you sponsor one or ALL of these exciting industry events.

WHAT ATTENDEES ARE SAYING

“Excellent networking and content covered—educating both those new and well seasoned to the space.”

“I enjoyed the vendor showcase—it provided an excellent opportunity to network. In fact, the entire conference was full of networking opportunities. It was such a great experience.”

“The presentations were very valuable, and I gained a lot of really fantastic information. It was also helpful to be in a space with people who were experiencing similar issues to my organization and to be able to brainstorm with them.”

“The content presented was outstanding in regards to breadth, depth, and relevance. I walked away with information that my organization will utilize immediately to define strategy and improve our business results. One of the best conferences I’ve attended.”

WHO ATTENDS KMWORLD EVENTS

Abbot Laboratories	Enbridge, Inc.	Authority	TIAA
The Aerospace Corp.	Federal Reserve System	Marine Corps Recruiting Command	Transportation Research Board
Amazon	Ferring Pharmaceuticals	Marriott International	Udacity
American Chemical Society	Genentech	The Mellon Foundation	Ulteig
Apple	Getty Images	Merck	Unum
Arthrex, Inc.	Grant Thornton	Meta	U.S. Department of Defense
AT&T Services	GROWMARK	New York Life Insurance	U.S. Department of Veterans Affairs
Bain & Company	Honda Development & Manufacturing of Americas, LLC	NextEra Energy, Inc.	U.S. Environmental Protection Agency
Bangko Sentral ng Pilipinas	ICF/Child Welfare Information Gateway	Noom	U.S. Food and Drug Administration Library
Bill and Melinda Gates Foundation	Idaho National Laboratory	Norad-Norwegian Agency for Development Cooperation	U.S. IRS
Bloomberg Industry Group	Immigration, Refugees and Citizenship Canada	Parachute Health	The Vets
Canadian Pacific Railway	Indeed	Peace Corps	Vinted
Capital One	International Baccalaureate	Petroleum Development Oman	Walton Family Foundation
Charles Schwab	Johnson & Johnson	Pfizer	Warner Bros. Discovery
CHRISTUS Health	J.P. Morgan & Chase	Puget Sound Energy	WebMD/Medspace
The Coca-Cola Company	Kent State University	PwC	WL Gore & Associates
Crunchyroll	Las Vegas Valley Water District	Quest Diagnostics	World Bank Group
Dell	Lendlease	RAND Corp.	World Education Services (WES)
Deloitte Touche Tohmatsu Limited	LinkedIn	Rivian	
Desjardins	Los Angeles County Metropolitan Transportation	Schwab Charitable	
Dotdash Meredith		Seagen	
Elsevier		Stanley Black & Decker	
		Thermo Fisher Scientific	



Diamond SPONSOR

\$15,995

Our Diamond Sponsors receive:

- 15-minute presentation to the combined conference audience on November 19, 20, or 21*
- Double Tabletop Display** in a premier location in the Enterprise Solutions Showcase
- Tabletop display (optional) outside conference sessions on November 18 and November 21. Includes 6' draped table, two chairs, wastebasket, and electricity.
- Recognition from podium and logos on video screen
- Banner advertising on the KMWorld 2024, Enterprise Search & Discovery, Taxonomy Boot Camp, Text Analytics Forum, and Enterprise AI World websites
- Company logo/link on websites, promotional materials, and signage for KMWorld 2024, Enterprise Search & Discovery, Taxonomy Boot Camp, Text Analytics Forum and Enterprise AI World
- Insertion of one promotional item into the conference bag (Insertion items are produced by sponsoring company.)
- Six platinum passes for internal or customer use (Platinum Pass includes access to all KMWorld 2024, Enterprise Search & Discovery, Taxonomy Boot Camp, Text Analytics Forum, and Enterprise AI World conference sessions; does not include workshops); plus one speaker registration; unlimited tabletop personnel
- Special discount VIP registration offer for your customers and prospects
- One full-page, four-color advertisement with premium positioning in the Final Program
- Postconference mailing list (includes name, title, company, mailing address, phone, and email address)

* Presentations will be an integral part of the conference program; content must be instructional and informative and will be subject to review. Scheduling of these presentations is at the discretion of the conference chairs who will confirm details and deadlines directly with Sponsor. Please note the following important dates (for planning purposes only): Advance Program, June 27; Final Program, October 10.

** Each Tabletop Display includes a 6' draped table, two side chairs, wastebasket, ID sign, and electricity (power strip). No hard-wall booths permitted. Any object 8' tall (MAX height allowed) must be against the back drape and come out no farther than 2'. All objects in the front 4' of the booth can be no taller than 36".



KMWWorld SPONSOR

\$9,995

PLATINUM SPONSORSHIP *(Only 8 Available)*

Benefits Include:

- Speaking opportunity
*(if contract is signed by May 31, 2024)**
- Tabletop Display in the Enterprise Solutions Showcase**
- Recognition from podium and logos on video screen
- Banner advertising on the KMWorld 2024 website
- Company logo/link on website, promotional materials, and showcase signage for KMWorld 2024
- One-page ad in the Final Program
- Insertion of one promotional item into conference bag *(Insertion items are produced by sponsoring company.)*
- Two full-conference registrations—for internal or customer use—plus one full-conference speaker registration; unlimited tabletop personnel
- Special discount VIP registration offer for your customers and prospects
- Postconference mailing list *(includes name, title, company, mailing address, phone, and email address)*

**Tutorials will be an integral part of the conference program; content must be instructional and informative and will be subject to review. Scheduling of these presentations is at the discretion of the conference chairs who will confirm details and deadlines directly with Sponsor. Please note the following important dates (for planning purposes only): Advance Program, June 27; Final Program, October 10.*

*** Each Tabletop Display includes a 6' draped table, two side chairs, wastebasket, ID sign, and electricity (power strip). No hard-wall booths permitted. Any object 8' tall (MAX height allowed) must be against the back drape and come out no farther than 2'. All objects in the front 4' of the booth can be no taller than 36".*

\$6,995

GOLD SPONSORSHIP

Benefits Include:

- Tabletop Display in the Enterprise Solutions Showcase*
- Recognition from podium and logos on video screen
- Banner advertising on the KMWorld 2024 website
- Company logo/link on website, promotional materials, and showcase signage for KMWorld 2024
- Two full-conference registrations—for internal or customer use; unlimited table top personnel
- Special discount VIP registration offer for your customers and prospects
- One-time direct-mail usage of postconference mailing list *(postal addresses only)*

** Each Tabletop Display includes a 6' draped table, two side chairs, wastebasket, ID sign, and electricity (power strip). No hard-wall booths permitted. Any object 8' tall (MAX height allowed) must be against the back drape and come out no farther than 2'. All objects in the front 4' of the booth can be no taller than 36".*



Enterprise Search & Discovery SPONSOR

\$9,995

PLATINUM SPONSORSHIP *(Only 8 Available)*

Benefits Include:

- Speaking opportunity
*(if contract is signed by May 31, 2024)**
- Tabletop Display in the Enterprise Solutions Showcase**
- Recognition from podium and logos on video screen
- Banner advertising on the Enterprise Search & Discovery website
- Company logo/link on website, promotional materials, and showcase signage for Enterprise Search & Discovery
- One-page ad in the Final Program
- Insertion of one promotional item into conference bag *(Insertion items are produced by sponsoring company.)*
- Two full-conference registrations—for internal or customer use—plus one full-conference speaker registration; unlimited tabletop personnel
- Special discount VIP registration offer for your customers and prospects
- Postconference mailing list *(includes name, title, company, mailing address, phone, and email address)*

**Tutorials will be an integral part of the conference program; content must be instructional and informative and will be subject to review. Scheduling of these presentations is at the discretion of the conference chairs who will confirm details and deadlines directly with Sponsor. Please note the following important dates (for planning purposes only): Advance Program, June 27; Final Program, October 10.*

*** Each Tabletop Display includes a 6' draped table, two side chairs, wastebasket, ID sign, and electricity (power strip). No hard-wall booths permitted. Any object 8' tall (MAX height allowed) must be against the back drape and come out no farther than 2'. All objects in the front 4' of the booth can be no taller than 36".*

\$6,995

GOLD SPONSORSHIP

Benefits Include:

- Tabletop Display in the Enterprise Solutions Showcase*
- Recognition from podium and logos on video screen
- Banner advertising on the Enterprise Search & Discovery website
- Company logo/link on website, promotional materials, and showcase signage for Enterprise Search & Discovery
- Two full-conference registrations—for internal or customer use; unlimited tabletop personnel
- Special discount VIP registration offer for your customers and prospects
- One-time direct-mail usage of postconference mailing list *(postal addresses only)*

** Each Tabletop Display includes a 6' draped table, two side chairs, wastebasket, ID Sign, and electricity (power strip). No hard-wall booths permitted. Any object 8' tall (MAX height allowed) must be against the back drape and come out no farther than 2'. All objects in the front 4' of the booth can be no taller than 36".*

FOR MORE INFORMATION CONTACT:

LaShawn Fugate, Account Executive
(859) 278-2223 x104 • lashawn@infotoday.com

Stephen Faig, Group Sales Director
(908) 795-3702 • sfaig@infotoday.com



Taxonomy Boot Camp

SPONSOR

\$9,995

PLATINUM SPONSORSHIP *(Only 6 Available)*

Benefits Include:

- Speaking opportunity *(if contract is signed by May 31, 2024)**
- Tabletop Display in the Enterprise Solutions Showcase**
- Table (optional) outside of conference sessions on November 18 *(includes 6' draped table, two chairs, wastebasket, and electricity)*
- Recognition from podium and logos on video screen
- Banner advertising on the Taxonomy Boot Camp website
- Company logo/link on website, promotional materials, and showcase signage for Taxonomy Boot Camp
- One-page ad in the Final Program
- Insertion of one promotional item into conference bag *(Insertion items are produced by sponsoring company.)*
- Two full-conference registrations—for internal or customer use—plus one full-conference speaker registration; unlimited tabletop personnel
- Special discount VIP registration offer for your customers and prospects
- Postconference mailing list *(includes name, title, company, mailing address, phone, and email address)*

**Tutorials will be an integral part of the conference program; content must be instructional and informative and will be subject to review. Scheduling of these presentations is at the discretion of the conference chairs who will confirm details and deadlines directly with Sponsor. Please note the following important dates (for planning purposes only): Advance Program, June 27; Final Program, October 10.*

*** Each Tabletop Display includes a 6' draped table, two side chairs, wastebasket, ID sign, and electricity (power strip). No hard-wall booths permitted. Any object 8' tall (MAX height allowed) must be against the back drape and come out no farther than 2'. All objects in the front 4' of the booth can be no taller than 36".*

\$6,995

GOLD SPONSORSHIP

Benefits Include:

- Tabletop Display in the Enterprise Solutions Showcase*
 - Table (optional) outside of conference sessions on November 18 *(includes 6' draped table, two chairs, wastebasket, and electricity)*
 - Recognition from podium and logos on video screen
 - Banner advertising on the Taxonomy Boot Camp website
 - Company logo/link on website, promotional materials, and showcase signage for Taxonomy Boot Camp
 - Two full-conference registrations—for internal or customer use; unlimited tabletop personnel
 - Special discount VIP registration offer for your customers and prospects
 - One-time direct-mail usage of postconference mailing list *(postal addresses only)*
- * Each Tabletop Display includes a 6' draped table, two side chairs, wastebasket, ID Sign, and electricity (power strip).. No hard-wall booths permitted. Any object 8' tall (MAX height allowed) must be against the back drape and come out no farther than 2'. All objects in the front 4' of the booth can be no taller than 36".*



NOVEMBER 20-21, 2024
JW Marriott • Washington, D.C.

Text Analytics Forum

SPONSOR



\$9,995

PLATINUM SPONSORSHIP *(Only 4 Available)*

Benefits Include:

- Speaking opportunity
*(if contract is signed by May 31, 2024)**
 - Tabletop Display in the Enterprise Solutions Showcase**
 - Table (optional) outside of conference sessions on November 21 *(includes 6' draped table, two chairs, wastebasket, and electricity)*
 - Recognition from podium and logos on video screen
 - Banner advertising on the Text Analytics Forum website
 - Company logo/link on website, promotional materials, and showcase signage for Text Analytics Forum
 - One-page ad in the Final Program
 - Insertion of one promotional item into conference bag
(Insertion items are produced by sponsoring company.)
 - Two full-conference registrations—for internal or customer use—plus one full-conference speaker registration; unlimited tabletop personnel
 - Special discount VIP registration offer for your customers and prospects
 - Postconference mailing list for each event *(includes name, title, company, mailing address, phone, and email address)*
- * Tutorials will be an integral part of the conference program; content must be instructional and informative and will be subject to review. Scheduling of these presentations is at the discretion of the conference chairs who will confirm details and deadlines directly with Sponsor. Please note the following important dates (for planning purposes only): Advance Program, June 27; Final Program, October 10.*
- ** Each Tabletop Display includes a 6' draped table, two side chairs, wastebasket, ID sign, and electricity (power strip). No hard-wall booths permitted. Any object 8' tall (MAX height allowed) must be against the back drape and come out no farther than 2'. All objects in the front 4' of the booth can be no taller than 36".*

\$6,995

GOLD SPONSORSHIP

Benefits Include:

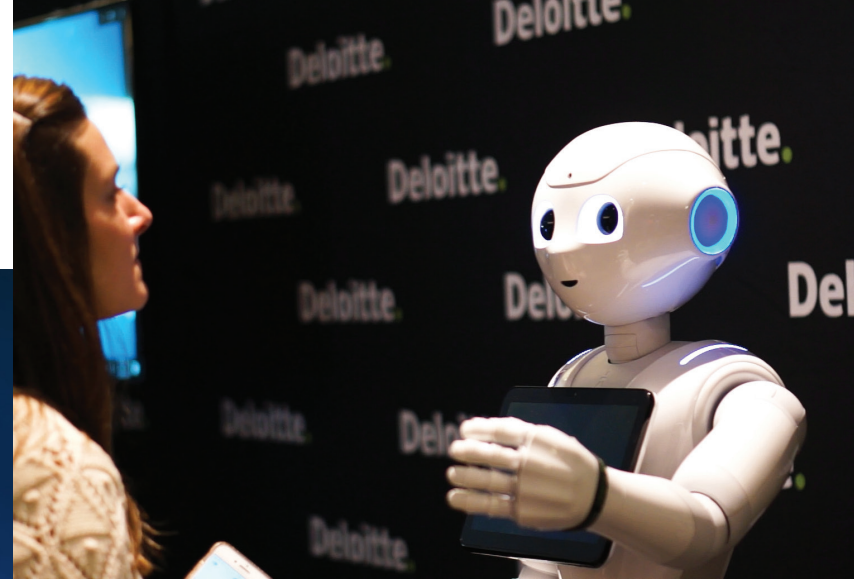
- Tabletop Display in the Enterprise Solutions Showcase*
 - Table (optional) outside of conference sessions on November 21
(includes 6' draped table, two chairs, wastebasket, and electricity)
 - Recognition from podium and logos on video screen
 - Banner advertising on the Text Analytics Forum website
 - Company logo/link on website, promotional materials, and showcase signage for Text Analytics Forum
 - Two full-conference registrations—for internal or customer use; unlimited tabletop personnel
 - Special discount VIP registration offer for your customers and prospects
 - One-time direct-mail usage of postconference mailing list *(postal addresses only)*
- * Each Tabletop Display includes a 6' draped table, two side chairs, wastebasket, ID sign, and electricity (power strip). No hard-wall booths permitted. Any object 8' tall (MAX height allowed) must be against the back drape and come out no farther than 2'. All objects in the front 4' of the booth can be no taller than 36".*

#TextAnalyticsDC
TEXTANALYTICS-FORUM.COM

FOR MORE INFORMATION CONTACT:

LaShawn Fugate, Account Executive
(859) 278-2223 x104 • lashawn@infotoday.com

Stephen Faig, Group Sales Director
(908) 795-3702 • sfaig@infotoday.com



Enterprise AI World SPONSOR

\$9,995

PLATINUM SPONSORSHIP *(Only 4 Available)*

Benefits Include:

- Speaking opportunity
*(if contract is signed by May 31, 2024)**
 - Tabletop Display in the Enterprise Solutions Showcase**
 - Table (optional) outside of conference sessions on November 21 *(includes 6' draped table, two chairs, wastebasket, and electricity)*
 - Recognition from podium and logos on video screen
 - Banner advertising on the Enterprise AI World website
 - Company logo/link on website, promotional materials, and showcase signage for Enterprise AI World
 - One-page ad in the Final Program
 - Insertion of one promotional item into conference bag
(Insertion items are produced by sponsoring company.)
 - Two full-conference registrations—for internal or customer use—plus one full-conference speaker registration; unlimited tabletop personnel
 - Special discount VIP registration offer for your customers and prospects
 - Postconference mailing list for each event *(includes name, title, company, mailing address, phone, and email address)*
- * Tutorials will be an integral part of the conference program; content must be instructional and informative and will be subject to review. Scheduling of these presentations is at the discretion of the conference chairs who will confirm details and deadlines directly with Sponsor. Please note the following important dates (for planning purposes only): Advance Program, June 27; Final Program, October 10.*
- ** Each Tabletop Display includes a 6' draped table, two side chairs, wastebasket, ID sign, and electricity (power strip). No hard-wall booths permitted. Any object 8' tall (MAX height allowed) must be against the back drape and come out no farther than 2'. All objects in the front 4' of the booth can be no taller than 36".*

\$6,995

GOLD SPONSORSHIP

Benefits Include:

- Tabletop Display in the Enterprise Solutions Showcase*
 - Table (optional) outside of conference sessions on November 21
(includes 6' draped table, two chairs, wastebasket, and electricity)
 - Recognition from podium and logos on video screen
 - Banner advertising on the Enterprise AI World website
 - Company logo/link on website, promotional materials, and showcase signage for Enterprise AI World
 - Two full-conference registrations—for internal or customer use; unlimited tabletop personnel
 - Special discount VIP registration offer for your customers and prospects
 - One-time direct-mail usage of postconference mailing list *(postal addresses only)*
- * Each Tabletop Display includes a 6' draped table, two side chairs, wastebasket, ID sign, and electricity (power strip). No hard-wall booths permitted. Any object 8' tall (MAX height allowed) must be against the back drape and come out no farther than 2'. All objects in the front 4' of the booth can be no taller than 36".*

Promotional OPPORTUNITIES

Maximize your ROI with these additional event-wide branding opportunities. Branding packages include attendees from all four co-located events: KMWorld 2024, Enterprise Search & Discovery, Taxonomy Boot Camp, Text Analytics Forum and Enterprise AI World.

Grand Opening Reception
(Monday)

\$5,995

Conference Bags
(Includes Production)

\$4,995

Boxed Lunches
(Tuesday or Wednesday)

\$3,995

Networking Happy Hour
(Tuesday)

\$2,995

Networking & Coffee Breaks
(Includes light continental breakfast, morning and afternoon breaks)

\$2,995

Lanyards
(Includes Production)

\$2,995

Conference Wi-Fi

\$2,995

Video Monitor

\$2,995

Hotel Key Cards
(Does not include cost of production or possible hotel distribution fees)

\$2,495

Branded Meterboard
(Includes Production)

\$2,495

Floor Tiles
(Includes Production)

\$2,495

Attendee Email Blast

\$1,495

Final Program Ad

\$1,295

Conference Bag Insert

\$895

Seat Drop

\$495

Private Meeting Room or Hotel Suite
Call for Pricing

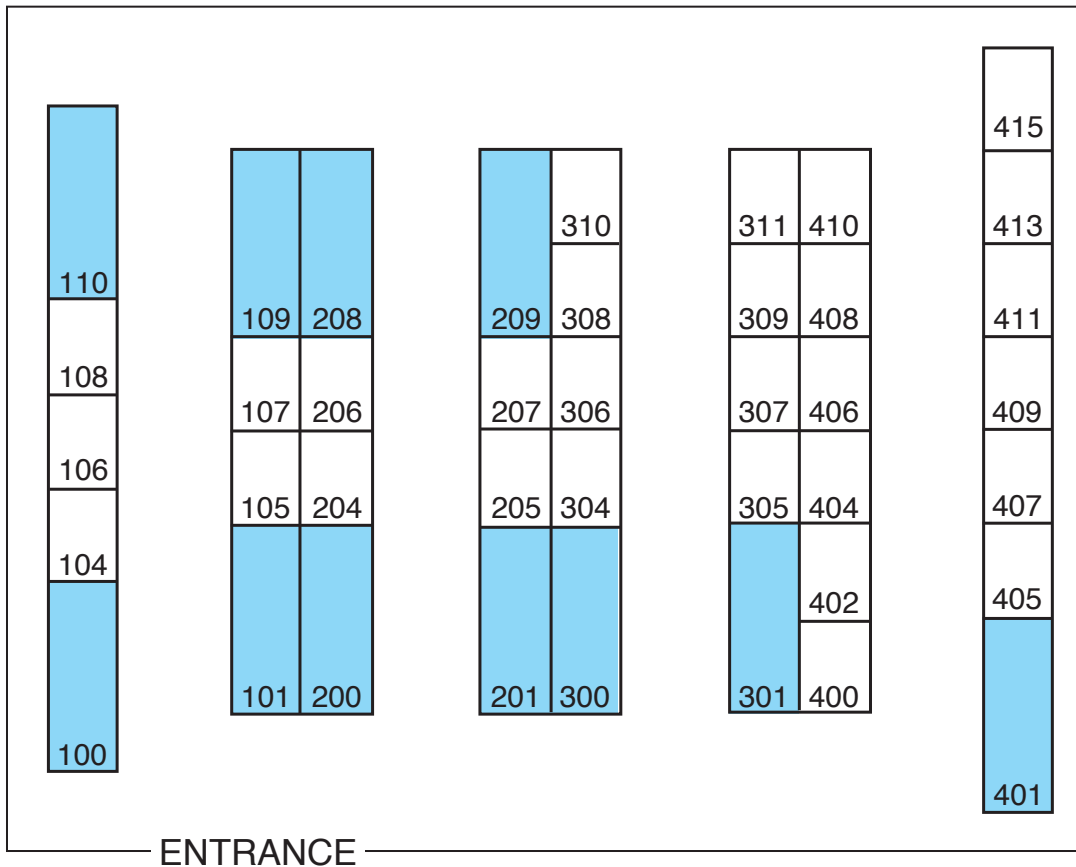
FOR MORE INFORMATION CONTACT:

LaShawn Fugate, Account Executive
(859) 278-2223 x104 • lashawn@infotoday.com

Stephen Faig, Group Sales Director
(908) 795-3702 • sfaig@infotoday.com

Floor PLAN

Enterprise Solutions SHOWCASE



- Reserved for Diamond Sponsors

NOTES

All tabletops are 6' deep by 8' wide.

No hard-wall booths are permitted.

Any object 8' tall (maximum allowed height) must be against the back drape and extend no farther than 2'.

All objects in the front 4' of the booth can be no taller than 36".

All display items and booth staff must be contained within the booth space.

Showcase is carpeted.

See Tabletop Space Agreement for additional guidelines.

SHOWCASE HOURS

MONDAY, NOVEMBER 18

5:00 p.m. – 6:30 p.m.

Grand Opening Reception

TUESDAY, NOVEMBER 19

10:00 a.m. – 6:00 p.m.

Networking Happy Hour

5:00 p.m. – 6:00 p.m.

WEDNESDAY, NOVEMBER 20

10:00 a.m. – 4:00 p.m.