

STUDENT CRISIS RESPONSE

Use this guide to identify the best resource to support students in crisis or needing mental health support



COUNSELING & PSYCHOLOGICAL SERVICES

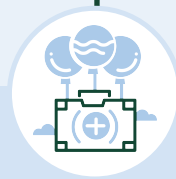
805-756-2511

Contact when...

- ✓ Situation is stable and student poses no imminent danger to self or others
- ✓ Student has thoughts of harm to self or others
- ✓ Student is interested in additional support, including safety planning and resources
- ✓ You are unsure of what support is needed

Tell the student...

"The Crisis Line is available to support them 24/7 and in person and virtual services are available M-F 8:30am-4:30pm."



SLO County MOBILE CRISIS TEAM

800-783-0607

Contact when...

- ✓ Student is in visible distress, but no active danger is present
- ✓ Student is expressing strong suicidal thoughts
- ✓ Student has a plan to end their life
- ✓ Student may qualify for an involuntary mental health hold (unable to care for self, intensifying thoughts of suicide or homicide with plan and intention)

Tell the student...

"Whenever MCT is contacted, CPPD is informed but does not typically accompany response."



CAL POLY POLICE (CPPD)

911/ 805-756-2281

Contact when...

- ✓ Situation poses imminent danger for student or community; intensifying suicidal or homicidal thoughts
- ✓ Weapons are present
- ✓ Student is displaying aggression or hostility
- ✓ Student is intoxicated and unable to care for themselves
- ✓ Student has medical concerns

Tell the student...

"The police have been contacted and they are responding."