

Compact Flash Card Adapter

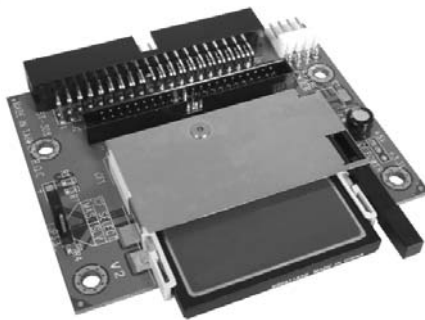
Compact Flash Card to IDE Adapter with 3.5" Bay Enclosure

Compact Flash Card to SATA Adapter with 3.5" Bay Enclosure

35BAYCF2IDE

35BAYCF2SAT

Instruction Manual



Actual product may vary from photo
Compact Flash Card not included

StarTech.com 
Making hard-to-find easy!

FCC Compliance Statement

This equipment has been tested and found to comply with the limits for a Class B digital device, pursuant to part 15 of the FCC Rules. These limits are designed to provide reasonable protection against harmful interference in a residential installation. This equipment generates, uses and can radiate radio frequency energy and, if not installed and used in accordance with the instructions, may cause harmful interference to radio communications. However, there is no guarantee that interference will not occur in a particular installation. If this equipment does cause harmful interference to radio or television reception, which can be determined by turning the equipment off and on, the user is encouraged to try to correct the interference by one or more of the following measures:

- Reorient or relocate the receiving antenna.
- Increase the separation between the equipment and receiver.
- Connect the equipment into an outlet on a circuit different from that to which the receiver is connected.
- Consult the dealer or an experienced radio/TV technician for help.

Use of Trademarks, Registered Trademarks, and other Protected Names and Symbols

This manual may make reference to trademarks, registered trademarks, and other protected names and/or symbols of third-party companies not related in any way to StarTech.com. Where they occur these references are for illustrative purposes only and do not represent an endorsement of a product or service by StarTech.com, or an endorsement of the product(s) to which this manual applies by the third-party company in question. Regardless of any direct acknowledgement elsewhere in the body of this document, StarTech.com hereby acknowledges that all trademarks, registered trademarks, service marks, and other protected names and/or symbols contained in this manual and related documents are the property of their respective holders.

Table of Contents

Introduction	1
Features	1
Before You Begin	1
System Requirements	1
Contents	1
Hardware Guide	2
Installation	3
Front Panel mount installation	3
Rear Panel mount installation	4
Operating Notes	5
Specifications	6
Technical Support	6
Warranty Information	6

Introduction

Thank for purchasing a StarTech.com Compact Flash Card adapter. This device provides a stable platform for use with Compact Flash media, installed in either the front or back of your computer based on individual needs, connected to the host computer using either an IDE (35BAYCF2IDE) or SATA (35BAYCF2SAT) connection.

Features

- Fully compatible with Compact Flash Type I/II and IBM Micro-drive
- Allows Compact flash card to be used as bootable storage
- Easy to use jumpers offer simple master/slave drive setting
- Front or rear panel mountable design

Before You Begin

System Requirements

- An available IDE connection (35CF2IDE only)
- An available SATA connection (35CF2SAT only)
- An available LP4 (4-pin) power supply connection
- An available 3.5" drive bay slot (for front mount installation)
- An available rear expansion slot (low profile or normal, for rear mount installations)

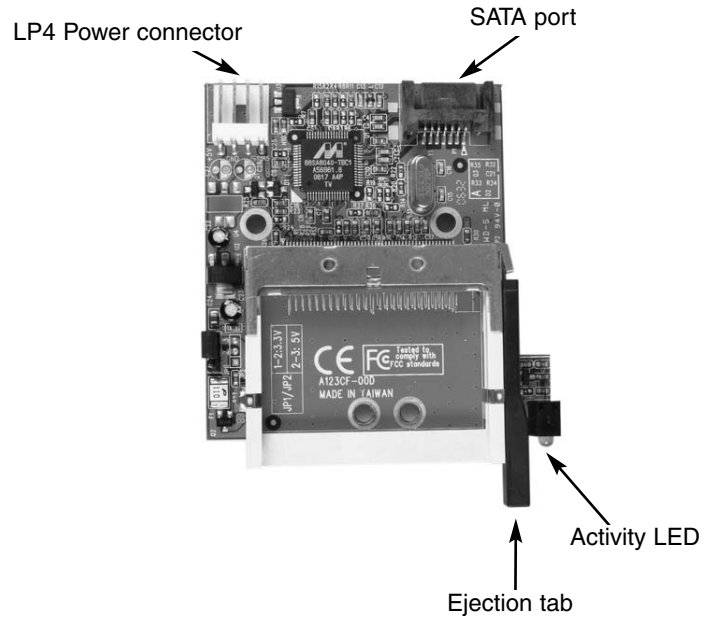
Package Contents

This package should contain:

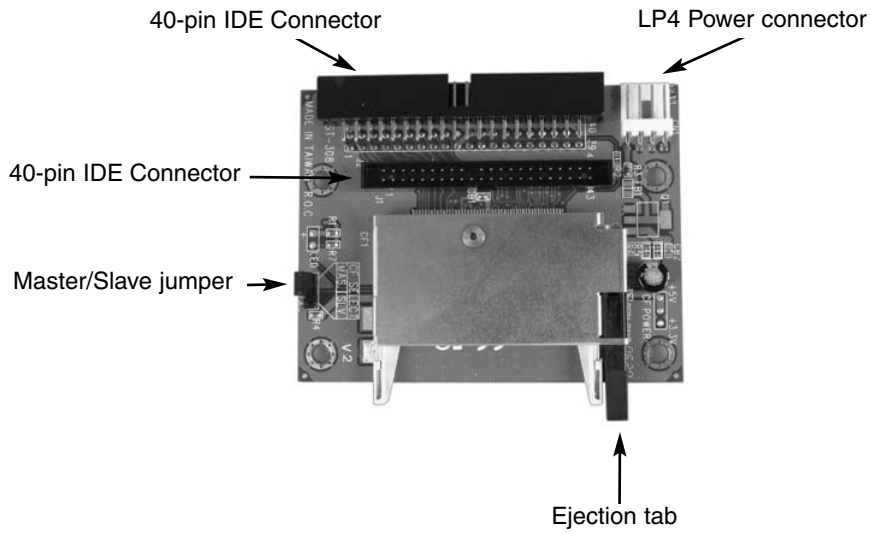
- 1 x Compact Flash Adapter
- 1 x 3.5" Enclosure
- 1 x Expansion Bracket
- 1 x Instruction Manual
- 1 x Screw kit

Hardware Guide

35BAYCF2SAT



35BAYCF2IDE



Installation

The following instructions apply to both 35BAYCF2SAT and 35BAYCF2IDE, as the required installation steps are virtually identical.

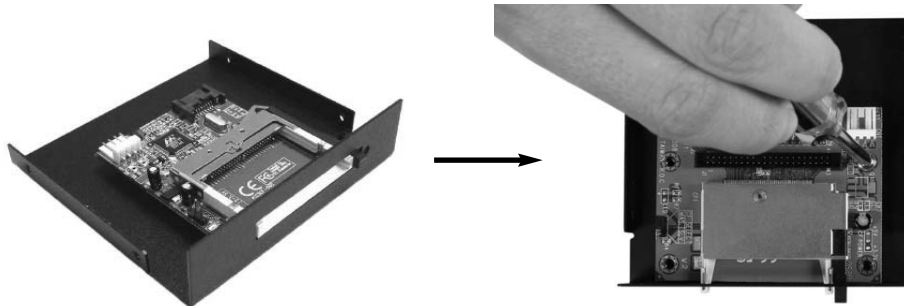


CAUTION: Computers contain sensitive electronic components that are easily damaged by static electricity and excessive shock. When handling the power supply and other components, ensure you are properly grounded using an anti-static mat or similar device. If anti-static equipment is not available, ground yourself by touching the exterior of the computer case or another large metal surface before handling any peripherals.

Front panel mount installation

To install the Compact Flash adapter into the front panel of the computer:

1. Power down the computer.
2. Remove both sides of the computer case (tower), allowing easy access to the front panel 3.5" drive bay you wish to use (see your computer's user manual for details, if necessary).
3. Remove a 3.5" drive bay panel from the front of the computer case (consult your computer's user manual for details, if necessary).
4. Fasten the Compact Flash Adapter to the base of the front panel expansion bracket, ensuring the card slot provided by the adapter is accessible through the opening in the front of the expansion bracket, using the screws provided:



5. Insert the expansion bracket (included) into the empty drive bay created in step 3, aligning the screw holes provided by the computer case with the screw holes on the side of the expansion bracket. Fasten the expansion bracket to the computer case using standard screws (typically, these screws are provided with the computer case, however StarTech.com offers a variety of screws and fasteners that would be suitable for this task. Please see Accessories available from StarTech.com for a listing of available screws.
6. Connect an available SP4 power connector (provided by computer power supply), to the power port on the Compact Flash adapter.
7. Connect the SATA (for 35BAYCF2SAT) or IDE (for 35BAYCF2IDE) port on the Compact Flash adapter to an available SATA or IDE connector on the motherboard, using a standard SATA or IDE cable. Please note that there are two options for IDE

Instruction Manual

connection, using either a 40-pin or 44-pin connector, based on your motherboard requirements.

8. Replace the computer case sides. Once the case has been secured, power on the computer. The Compact Flash adapter is now ready to use.

Rear panel mount installation

To install the Compact Flash adapter into the rear panel of the computer:

1. Power down the computer.
2. Remove the computer cover to provide easy access to the internal components of the computer. For more detailed instruction on how to perform this step, please refer to the documentation that was included with your computer at the time of purchase.
3. Using the screws provided, fasten the Compact Flash adapter to the rear bracket:



4. Once the Compact Flash adapter is secured to the rear bracket provided, connect an available SP4 power connector (provided by computer power supply), to the power port on the Compact Flash adapter.
5. Connect the SATA (for 35BAYCF2SAT) or IDE (for 35BAYCF2IDE) port on the Compact Flash adapter to an available SATA or IDE connector on the motherboard as appropriate, using a standard SATA or IDE cable (as appropriate). Please note that there are two options for IDE connection, using either a 40-pin or 44-pin connector, based on your motherboard requirements.
6. Once the Compact Flash adapter is secured to the rear bracket provided, connect an available SP4 power connector (provided by computer power supply), to the power port on the Compact Flash adapter.
6. Remove a rear bracket cover, allowing the adapter to be inserted through the remaining slot. Connect the rear bracket (with Compact Flash adapter attached) to the rear panel of the computer case, as you would an expansion card.
7. Restore power to the computer. The Compact Flash adapter is now ready for use.

Operating notes



CAUTION: Please note that 35BAYCF2IDE and 35BAYCF2SAT require that the host computer be shut down when the Compact Flash card being used is inserted or removed. Removing or inserting a Compact Flash card while the computer is powered on could result in lost data or physical damage to the card or the card reader.

Jumper settings

Please note that 35BAYCFIDE allows you to select Master or Slave designation for the connected Compact Flash card, using an onboard jumper. Once you have determined which setting you wish to use, simply locate the jumper on the adapter and adjust as follows:



1 & 2 Master
2 & 3 Slave

Inserting a Compact Flash card

1. To begin using your Compact Flash cards with the Compact Flash Adapter, power down the host computer.
2. Insert the Compact Flash card into the slot provided by the adapter.
3. Restore power to the host computer. Once the operating system is fully booted, you will be able to access your newly installed storage, in **My Computer**.

Removing a Compact Flash card

To remove a Compact Flash card from the adapter:

1. Power down the host computer.
2. Press the Ejection tab until the Compact Flash card is released from the adapter. Pull the card from the adapter.
3. Restore power to the computer.

Specifications

Bus Type	35BAYCF2SAT: Serial ATA 35BAYCF2IDE: IDE
Form Factor	35BAYCF2SAT: Standard SATA 35BAYCF2IDE: 40 pin IDE, 44 pin IDE
Connectors	35BAYCF2SAT: 1 x 7 pin SATA 1 x SP4 Power 1 x Compact Flash Slot 35BAYCF2IDE: 1 x 40 pin IDE 1 x 44 pin IDE 1 x 4 SP4 Power 1 x Compact Flash Slot
Regulatory Certifications	FCC, CE, ROHS

Technical Support

StarTech.com's lifetime technical support is an integral part of our commitment to provide industry-leading solutions. If you ever need help with your product, visit www.startech.com/support and access our comprehensive selection of online tools, documentation, and downloads.

Warranty Information

This product is backed by a one-year warranty. In addition, StarTech.com warrants its products against defects in materials and workmanship for the periods noted, following the initial date of purchase. During this period, the products may be returned for repair, or replacement with equivalent products at our discretion. The warranty covers parts and labor costs only. StarTech.com does not warrant its products from defects or damages arising from misuse, abuse, alteration, or normal wear and tear.

Limitation of Liability

In no event shall the liability of StarTech.com Ltd. and StarTech.com USA LLP (or their officers, directors, employees or agents) for any damages (whether direct or indirect, special, punitive, incidental, consequential, or otherwise), loss of profits, loss of business, or any pecuniary loss, arising out of or related to the use of the product exceed the actual price paid for the product. Some states do not allow the exclusion or limitation of incidental or consequential damages. If such laws apply, the limitations or exclusions contained in this statement may not apply to you.

About StarTech.com

StarTech.com is “The Professionals’ Source for Hard-to-Find Computer Parts”. Since 1985, we have been providing IT professionals with the quality products they need to complete their solutions. We offer an unmatched selection of computer parts, cables, server management solutions and A/V products and serve a worldwide market through our locations in the United States, Canada, the United Kingdom and Taiwan.

Visit **www.startech.com** for complete information about all our products and to access exclusive interactive tools such as the Parts Finder and the KVM Reference Guide. StarTech.com makes it easy to complete almost any IT solution. Find out for yourself why our products lead the industry in performance, support, and value.