



# Getac S410-G4

Self-Maintenance Manual

# Content

---

Handle (P/N 344876800018)  
Side door (P/N 340876800006)  
Rear door (P/N 340876800007)  
Main SSD canister (P/N 581191770002)  
Keyboard (P/N 531091770001)

## Handle (P/N 344876800018)

1. Remove the four screws (342830700019), then remove the cover.



2. Remove the Handle.



### To install:

Reverse the removal procedure to install the new part.

## Side door (P/N 340876800006)

1. Remove the four screws (371102010066) that secure the door to S410G4.



2. Detach the door from S410G4.

### **To install:**

Reverse the removal procedure to install the new part.

## Rear Door (P/N 34087680007)

1. Remove the three screws (371102010066) that secure the door to S410G4.



2. Detach the door from S410G4.

### To install:

Reverse the removal procedure to install the new part.

## Main SSD canister (P/N 581191770002)

1. Remove one screw (370102010421), and then remove the SSD canister.



2. Remove one screw (371102010432), and then remove the cover., you can find below parts.



## Main SSD canister (P/N 581191770002)

3. Paste the Mylar onto the new SSD.



4. Paste the thermal pad onto the other side of the SSD.



## Main SSD canister (P/N 581191770002)

5. Insert the SSD into the connector.



6. Assemble the SSD cover and fix the cover using the one screw (371102010432).

**Attention: The hook needs to be clamped tightly.**

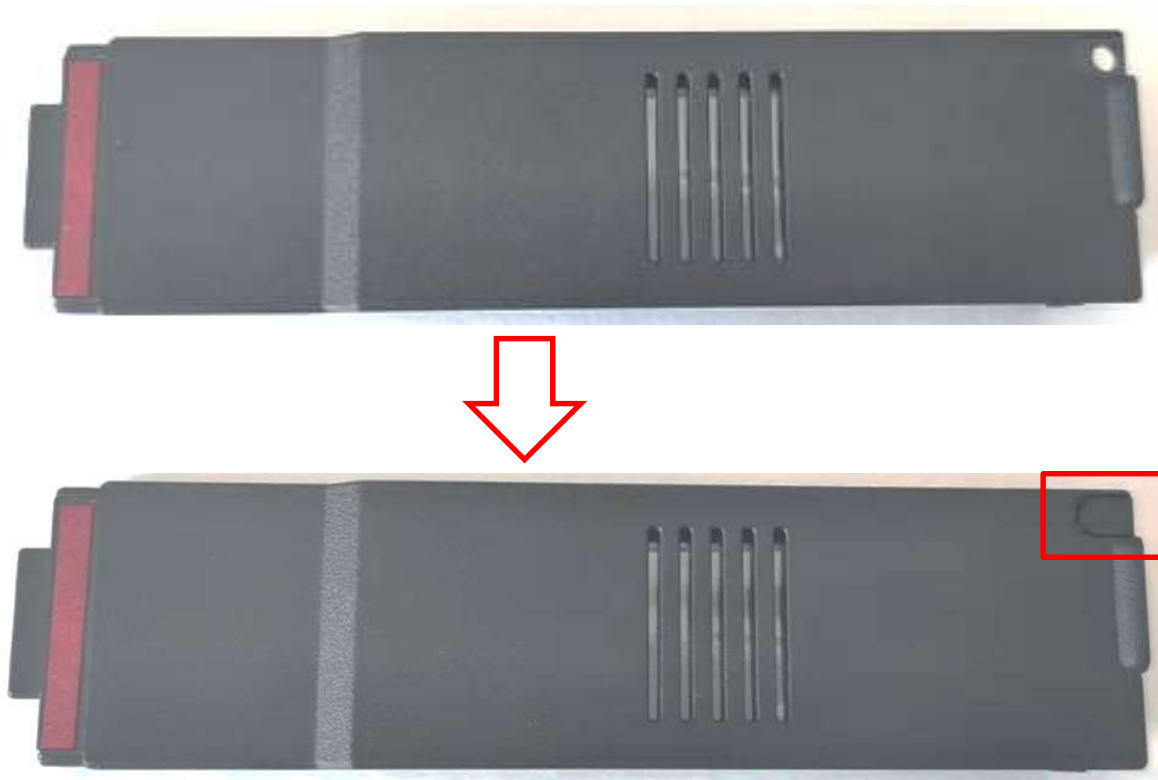




## Main SSD canister (P/N 581191770002)

7. Paste the Mylar onto the SSD canister.

**Attention: You can choose if you want to paste this Mylar or not.**

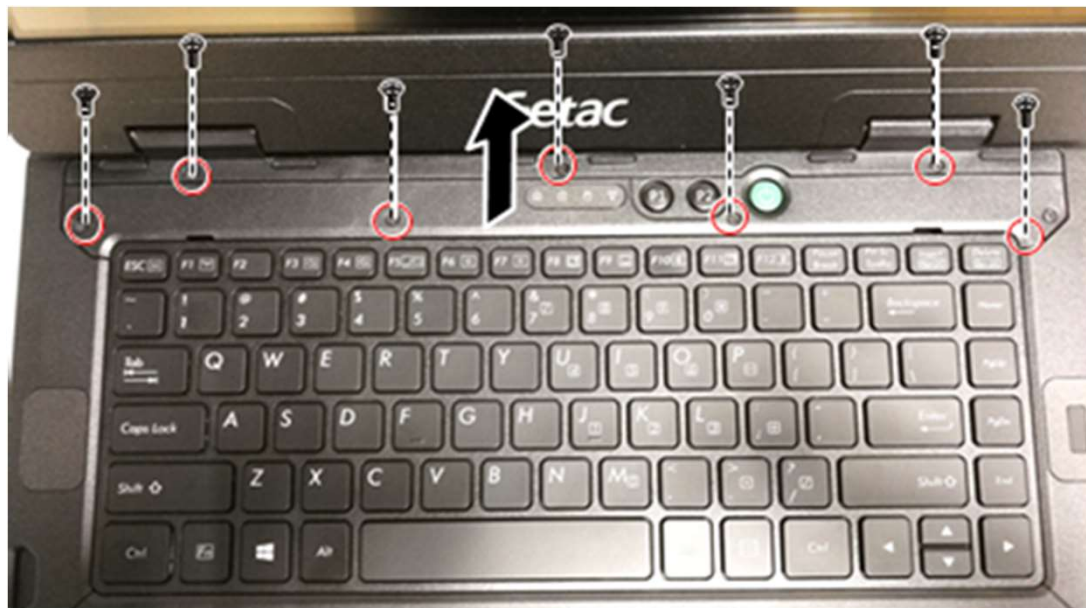


# Keyboard (P/N 531091770001)

1. Remove two screws (371102010432) lock the keyboard cover.



2. Remove seven screws (371102010432) lock the keyboard cover and hinge cover. Then remove the keyboard cover and hinge cover.



## Keyboard (P/N 531091770001)

3. Remove two screws (371102010432) lock the keyboard cover.

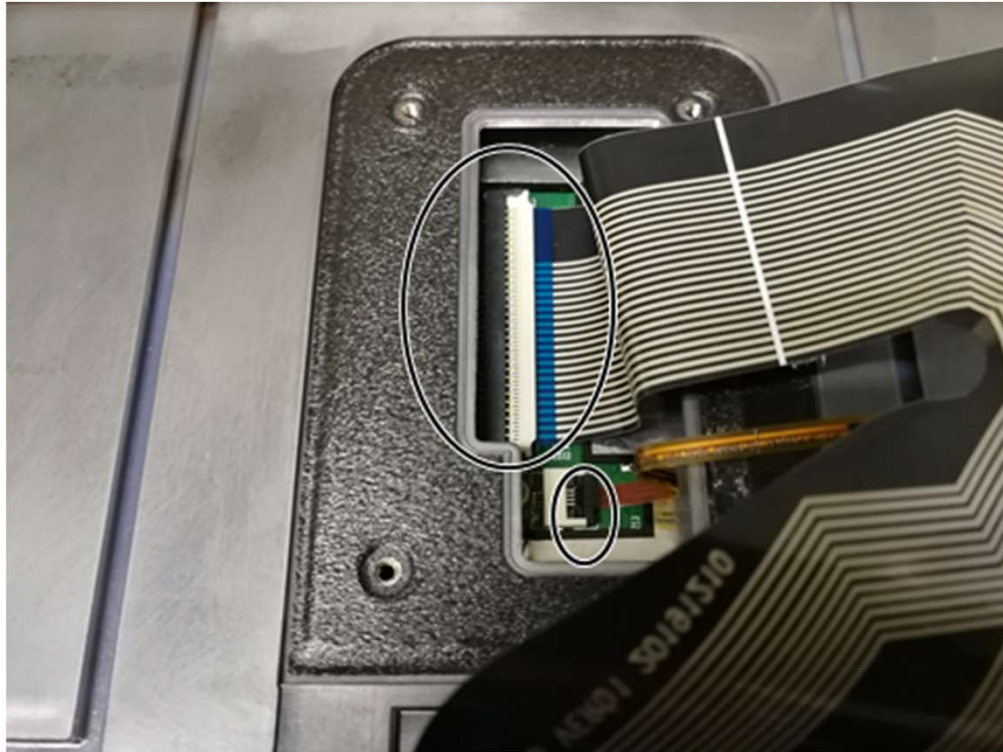


4. Remove four screws (370102010416) lock the keyboard bracket cover, then remove the keyboard bracket cover.



## Keyboard (P/N 531091770001)

5. Disconnect the keyboard FPC, then remove the keyboard.



### To install:

Reverse the removal procedure to install the new part.



**THANK YOU FOR YOUR ATTENTION**