

Technical University of Denmark



Inter-comparison and evaluation of sea ice algorithms: towards further identification of challenges and optimal approach using passive microwave observations

Ivanova, N.; Pedersen, L. T. ; Tonboe, R. T. ; Kern, S.; Heygster, G.; Lavergne, T.; Sørensen, A.; Saldo, Roberto; Dybkjær, G.; Brucker, L.; Shokr, M.

Published in:
The Cryosphere

Link to article, DOI:
[10.5194/tc-9-1797-2015](https://doi.org/10.5194/tc-9-1797-2015)

Publication date:
2015

Document Version
Publisher's PDF, also known as Version of record

[Link back to DTU Orbit](#)

Citation (APA):
Ivanova, N., Pedersen, L. T., Tonboe, R. T., Kern, S., Heygster, G., Lavergne, T., ... Shokr, M. (2015). Inter-comparison and evaluation of sea ice algorithms: towards further identification of challenges and optimal approach using passive microwave observations. *The Cryosphere*, 9, 1797–1817. DOI: 10.5194/tc-9-1797-2015

DTU Library

Technical Information Center of Denmark

General rights

Copyright and moral rights for the publications made accessible in the public portal are retained by the authors and/or other copyright owners and it is a condition of accessing publications that users recognise and abide by the legal requirements associated with these rights.

- Users may download and print one copy of any publication from the public portal for the purpose of private study or research.
- You may not further distribute the material or use it for any profit-making activity or commercial gain
- You may freely distribute the URL identifying the publication in the public portal

If you believe that this document breaches copyright please contact us providing details, and we will remove access to the work immediately and investigate your claim.



Inter-comparison and evaluation of sea ice algorithms: towards further identification of challenges and optimal approach using passive microwave observations

N. Ivanova¹, L. T. Pedersen², R. T. Tonboe², S. Kern³, G. Heygster⁴, T. Lavergne⁵, A. Sørensen⁵, R. Saldo⁶, G. Dybkjær², L. Brucker^{7,8}, and M. Shokr⁹

¹Nansen Environmental and Remote Sensing Center, Bergen, Norway

²Danish Meteorological Institute, Copenhagen, Denmark

³University of Hamburg, Hamburg, Germany

⁴University of Bremen, Bremen, Germany

⁵Norwegian Meteorological Institute, Oslo, Norway

⁶Technical University of Denmark, Lyngby, Denmark

⁷NASA Goddard Space Flight Center, Cryospheric Sciences Laboratory, Code 615, Greenbelt, Maryland 20771, USA

⁸Universities Space Research Association, Goddard Earth Sciences Technology and Research Studies and Investigations, Columbia, Maryland 21044, USA

⁹Environment Canada, Ontario, Canada

Correspondence to: N. Ivanova (natalia.ivanova@nersc.no)

Received: 4 February 2015 – Published in The Cryosphere Discuss.: 26 February 2015

Revised: 21 August 2015 – Accepted: 24 August 2015 – Published: 15 September 2015

Abstract. Sea ice concentration has been retrieved in polar regions with satellite microwave radiometers for over 30 years. However, the question remains as to what is an optimal sea ice concentration retrieval method for climate monitoring. This paper presents some of the key results of an extensive algorithm inter-comparison and evaluation experiment. The skills of 30 sea ice algorithms were evaluated systematically over low and high sea ice concentrations. Evaluation criteria included standard deviation relative to independent validation data, performance in the presence of thin ice and melt ponds, and sensitivity to error sources with seasonal to inter-annual variations and potential climatic trends, such as atmospheric water vapour and water-surface roughening by wind. A selection of 13 algorithms is shown in the article to demonstrate the results. Based on the findings, a hybrid approach is suggested to retrieve sea ice concentration globally for climate monitoring purposes. This approach consists of a combination of two algorithms plus dynamic tie points implementation and atmospheric correction of input brightness temperatures. The method minimizes inter-sensor calibration discrepancies and sensitivity to the mentioned error sources.

1 Introduction

From a perspective of climate change, it is important to know how fast the total volume of sea ice is changing. In addition to sea ice thickness (Kern et al., 2015), this requires reliable estimates of sea ice concentration (SIC). Consistency in sea ice climate records is crucial for understanding of internal variability and external forcing (e.g. Notz and Marotzke, 2012) in the observed sea ice retreat in the Arctic (Cavalieri and Parkinson, 2012) and expansion in the Antarctic (Parkinson and Cavalieri, 2012).

Accuracy and precision serve as measures of performance of a SIC algorithm. Accuracy (expressed by bias) is the difference between the mean retrieval and the true value. Precision (expressed by standard deviation, SD) is the range within which repeated retrievals of the same quantity scatter around the mean value (see also Brucker et al., 2014, where precision is addressed in detail). The average accuracy of commonly known algorithms, such as NASA Team (Cavalieri et al., 1984) and Bootstrap (Comiso, 1986), is reported to be within $\pm 5\%$ in winter in a compact (high concentration) ice pack. The accuracy of the Bootstrap scheme applied

to AMSR-E (Advanced Microwave Scanning Radiometer for Earth Observing System) data, expressed as standard deviation of the scatter around the ice line, was estimated at 2.5 %. The accuracy including the combined effect of surface temperature and emissivity variability was 4 % (Comiso, 2009). A comparison of seven algorithms to a trusted data set of synthetic aperture radar (SAR) and ship-based observations in the Arctic showed precision of 3–5 %, including sensor noise (Andersen et al., 2007). In summer and at the ice edge the retrievals are more uncertain, and accuracy can be as poor as ± 20 % (Meier and Notz, 2010). Inter-comparison of 11 SIC algorithms in the Arctic showed differences in SIC retrievals of 2.0–2.5 % in winter in the areas of consolidated ice (5–12 % for intermediate SIC) and 2–8 % in summer reaching up to 12 % in the Canadian Archipelago area (Ivanova et al., 2014). The large uncertainty in retrievals of the summer period is caused by increased variability in sea ice emissivity due to the surface wetness and presence of melt ponds. Part of the uncertainty at low and intermediate SICs, which is relevant both for summer and for the marginal ice zone at any time, is caused by atmospheric contributions and wind roughening of open water areas, as shown for the Arctic by Andersen et al. (2006). The marginal ice zone is characterised by increased uncertainties due to smearing and footprint mismatch effects. The uncertainties over consolidated ice during Arctic winter were explained by variations in sea ice emissivity (Andersen et al., 2007).

In this study we focus on the following four error sources, to which the algorithms have different responses: (1) sensitivity to emissivity and physical temperature of sea ice, (2) atmospheric effects, (3) melt ponds, and (4) thin ice. The sensitivity to emissivity and physical temperature of sea ice depends on the selection of input brightness temperatures (T_b) available at electromagnetic frequencies between 6 and near 90 GHz in vertical (V) and horizontal (H) polarisations, and the method applied to retrieve SIC from them, which distinguishes each algorithm among the others (explained in Sect. 2.1). Kwok (2002) and Andersen et al. (2007) showed that SIC algorithms do not reflect the ice concentration variability in the Arctic adequately when SIC is near 100 %. Variability due to actual ice concentration changes in the order of less than 3 % is below the noise floor of the algorithms. Heat and moisture fluxes between the surface (ocean or ice) and the atmosphere are sensitive to small variations in the near-100 % ice cover (Marcq and Weiss, 2012). This unresolved SIC variability can thus be of significant importance for sea ice models (and consequently coupled climate models) when assimilating these data without proper handling of the uncertainties. The apparent fluctuations in the derived ice concentration in the near-100 % ice regime are primarily attributed to snow/ice surface emissivity variability around the tie point (predefined T_b for ice) and only secondarily to actual SIC fluctuations (Andersen et al., 2007).

The second error source is represented by atmospheric effects, such as water vapour, cloud liquid water (CLW) and

wind roughening of the water surface. It causes the observed T_b to increase and to change as a function of polarisation and frequency, season and location (Andersen et al., 2006). This effect is usually larger during summer and early fall and over open water (also in the marginal ice zone) because of the larger amounts of water vapour and CLW in the atmosphere, and generally more open water areas present.

Algorithms with different sensitivities to surface emissivity and atmospheric effects produce different estimates of trends in sea ice area and extent on seasonal and decadal time scales (Andersen et al., 2007). Effect of diurnal, regional and inter-annual variability of atmospheric forcing on surface microwave emissivity was also reported in a model study of Willmes et al. (2014). This means that not only sea ice area has a climatic trend, but atmospheric and surface parameters affecting the microwave emission may also have a trend. Such parameters can be wind patterns, atmospheric water vapour and CLW (Wentz et al., 2007), snow depth and snow properties, and the fraction of multi-year ice (MYI).

However, some algorithms are less sensitive than others to these effects (Andersen et al., 2006; Oelke, 1997), and it is thus important to select an algorithm with low sensitivity to them. It is particularly important to have low sensitivity to error sources which are currently impossible to correct for, e.g. extinction and emission by CLW or sea ice emissivity variability. We therefore designed a set of experiments to test a number of aspects related to SIC algorithm performance, and ultimately to allow us to select an optimal algorithm for retrieval of a SIC climate data record.

Melt ponds on Arctic summer sea ice represent an additional source of errors due to their microwave radiometric signatures being similar to open water. Virtually all SIC algorithms based on the passive microwave channels around 19, 37, and 90 GHz are very sensitive to presence of melt water on the ice. The penetration depth of microwave radiation into liquid water is a few millimetres at most (Ulaby et al., 1986), and therefore it is impossible to distinguish between ocean water (in leads) and melt water (on the ice). This is the primary reason why most SIC algorithms are less reliable during summer and potentially underestimate the actual SIC (Fetterer and Untersteiner, 1998; Cavalieri et al., 1990; Comiso and Kwok, 1996). Melt ponds may exhibit a diurnal cycle with interchanging periods of open water and thin ice. This further complicates the SIC retrieval using satellite microwave radiometry during summer and increases the level of uncertainty. Some SIC algorithms have been shown to underestimate SIC by up to 40 % in the areas with melt ponds (Rösel et al., 2012b).

Thin ice is known to be another challenge for the passive microwave algorithms as they underestimate SIC in such areas (Heygster et al., 2014; Kwok et al., 2007; Cavalieri, 1994). Recent studies of aerial (Naoki et al., 2008) and satellite (Heygster et al., 2014) passive microwave measurements show an increase in T_b with sea ice thickness (< 30 cm), which is more pronounced for lower frequencies and hori-

zonal polarisation. Since an instantaneous amount of thin ice can reach as much as 1 million km² (total amount globally, Grenfell et al., 1992), the effect of SIC underestimation can be significant for ice area estimates, air–sea heat and moisture exchange and modelled ice dynamics. It may also affect ice volume estimates. It is suggested that the dependency of Tb on the sea ice thickness is due to changes in near-surface dielectric properties caused, in turn, by changes of brine salinity with thickness and temperature (Naoki et al., 2008).

For the first time this many (30) SIC algorithms are evaluated in a consistent and systematic manner including both hemispheres, and their performance tested with regard to high and low SIC, areas with melt ponds, thin ice, atmospheric influence and tie points; and covering the observing characteristics of the Scanning Multichannel Microwave Radiometer (SMMR), Special Sensor Microwave Imager (SSM/I) and AMSR-E. The novelty of the presented approach to algorithm inter-comparison is in the implementation of all the algorithms with the same tie points, which helps to avoid subjective tuning, and without applying weather filters, which have their weaknesses (also addressed in this study). When evaluating the algorithms, we have focused in particular on achieving low sensitivity to the error sources over ice and open water, performance in areas covered by melt ponds in summer and thin ice in autumn. We suggest that an optimal algorithm should be adaptable to using: (1) dynamic tie points in order to reduce inter-instrument biases and sensitivity to error sources with potential climatological trends and/or seasonal and inter-annual variations and (2) regional error reduction using meteorological data and forward models.

The algorithms' evaluation of algorithms was carried out in the context of European Space Agency Climate Change Initiative, Sea Ice (ESA SICCI) and is described in the following sections. Section 2 describes the algorithms and the basis for selection of the 13 algorithms to be shown in the following sections. Section 3 describes the data and methods. Section 4 presents the main results of the work: the inter-comparison and evaluation of the selected algorithms, suggested atmospheric correction and dynamic tie points approach. All the input data and obtained results are collocated and composed into a reference data set called round robin data package (RRDP). This is done in order to achieve equal treatment of all the algorithms during the inter-comparison and evaluation, as well as to provide an opportunity for further tests in a consistent manner. This data set is available from the Integrated Climate Data Center (ICDC, <http://icdc.zmaw.de/1/projekte/esa-cci-sea-ice-ecv0.html>). The discussion and conclusions are provided in Sects. 5 and 6 respectively.

2 The algorithms

During the experiment, we implemented 30 SIC algorithms and found that they can be grouped according to the selection of channels and how these are used in each algorithm. We also found that algorithms within each group had very similar sensitivity to atmospheric effects and surface emissivity variations. This is in agreement with sensitivity studies (Tonboe, 2010; Tonboe et al., 2011) using simulated Tbs generated by combining a thermodynamic ice/snow model to the microwave emissivity model for layered snow packs (MEMLS) (Wiesmann and Mätzler, 1999; Tonboe et al., 2006). To avoid redundancy we only include here a selection of 13 sea ice algorithms (Table 1), which were chosen as representatives of the groups.

2.1 Selected algorithms

The first group of algorithms, represented by Bootstrap polarisation mode (BP, Comiso, 1986), includes polarisation algorithms. These algorithms primarily use 19 or 37 GHz polarisation difference (difference between Tbs in vertical and horizontal polarisations of the same frequency) or polarisation ratio (polarisation difference divided by the sum of the two Tbs). The next group uses 19V and 37V channels and is represented here by CalVal (CV, Ramseier, 1991). Commonly known algorithms in this group are NORSEX (Svendsen et al., 1983), Bootstrap frequency mode (BF, Comiso, 1986) and UMass-AES (Swift et al., 1985). Bristol (BR, Smith, 1996) represents the group that uses both polarisation and spectral gradient information from the channels 19V, 37V and 37H. The NASA Team algorithm (NT, Cavalieri et al., 1984) uses the polarisation ratio at 19 GHz and the gradient ratio of 19V and 37V. ASI (The Arctic Radiation and Turbulence Interaction Study (ARTIST) Sea Ice Algorithm), a non-linear algorithm (Kaleschke et al., 2001), and Near 90 GHz linear (N90, Ivanova et al., 2013) use the polarisation difference at near 90 GHz, both based on Svendsen et al. (1987). These are also called near 90 GHz or high-frequency algorithms. ESMR, named after the single channel 18H Electrically Scanning Microwave Radiometer on board Nimbus-5 operating from 1972 to 1977 (e.g. Parkinson et al., 2004), and 6H (Pedersen, 1994) are one-channel algorithms using horizontal polarisation at 18/19 and 6 GHz respectively. ECICE (Environment Canada's Ice Concentration Extractor, Shokr et al., 2008) and NASA Team 2 (NT2, Markus and Cavalieri, 2000) represent a special class of more complex algorithms where more channels are used, and additional data may be needed as input. Finally we consider combinations of algorithms (hybrid algorithms), where one of the algorithms is expected to have low sensitivity to atmospheric effects over open water, and the other is expected to have a better performance over ice. This group includes the NT+CV algorithm (Ivanova et al., 2013): an average of NT and CV, the CV+N90 algorithm (Ivanova et al., 2013): an

Table 1. The sea ice concentration (SIC) algorithms shown in this study.

Algorithm	Acronym	Reference	Channels
Bootstrap P	BP	Comiso (1986)	37V, 37H <i>P</i>
CalVal	CV	Ramseier (1991)	19V, 37V <i>F</i>
Bristol	BR	Smith (1996)	19V, 37V, 37H PF
NASA Team	NT	Cavalieri et al. (1984)	19V, 19H, 37V PF
ASI	ASI	Kaleschke et al. (2001)	85V, 85H <i>P</i>
Near 90GHz linear	N90	Ivanova et al. (2013)	85V, 85H <i>P</i>
ESMR	ESMR	Parkinson et al. (2004)	19H
6H	6H	Pedersen (1994)	6H
ECICE	ECICE	Shokr et al. (2008)	19V and 19H or 37V and 37H <i>P</i>
NASA Team 2	NT2	Markus and Cavalieri (2000)	19V, 19H, 37V, 85V, 85H PF
NT+CV	NT+CV	Ivanova et al. (2013)	19V, 19H, 37V PF
CV+N90	CV+N90	Ivanova et al. (2013)	19V, 37V, 85V, 85H PF
OSISAF	OSISAF	Eastwood (2012)	19V, 37V, 37H PF

P indicates that the algorithm is based on the polarisation difference or ratio at a single frequency; *F* indicates that the algorithm uses two different frequencies at the same polarisation (i.e., a spectral gradient). The names of the high-frequency algorithms (and the algorithms partially using high frequencies) are shown in bold, while the rest are low-frequency algorithms.

average of N90 and CV, and the OSISAF algorithm (Eastwood, 2012): a weighted combination of BR over ice and BF over open water (note that BF is identical to CV). The Bootstrap algorithm is tested in its two modes separately for the reasons explained in Sect. 5.1.

All the algorithms were evaluated without applying open water/weather filters, since our aim was a comparison of the algorithms themselves. We consider performance of an open water/weather filter separately in Sect. 4.4.

2.2 Tie points

A necessary parameter for practically every algorithm is a set of tie points – typical Tbs of sea ice (100 % SIC) and open water (0 % SIC). Under certain conditions, such as wind-roughened water surface or thin sea ice, it is difficult to define a single tie point to represent the surface. In nature, Tb may have a range of variability for the same ice type or open water due to varying emissivity, atmospheric conditions, and temperature of the emitting layer. Therefore the scatter of retrieved SIC near the tie points, which correspond to 0 and 100 %, may lead to negative or larger than 100 % SICs. Instead of using a set of single tie points to represent the radiometric values (e.g., brightness temperature) for each surface type, the input to the ECICE algorithm is a set of probability distributions of the radiometric observations. Some 1000 sets are randomly and simultaneously selected from the distributions. The optimal solution for SIC is then obtained using each set, and the final solution is found based on a statistical criterion that combines the 1000 possible solutions (see Shokr et al., 2008 for details).

In order to perform a fair comparison of the algorithms, we developed a special set of tie points (Appendix A) based on the RRDP for both hemispheres and for each of the three radiometers: AMSR-E, SSM/I and SMMR. This enabled us to

exclude differences between the algorithms caused by different tie points and thus compare the algorithms directly. The set of the RRDP tie points differs from the original tie points provided with the algorithms. This is caused by the fact that we use different versions of the satellite data, which may have different calibrations. Also, the tie points published with the algorithms are typically valid for one instrument and need to be derived for each new sensor. In this study the RRDP tie points were used for all the algorithms except ASI, NASA Team 2 and ECICE, where such traditional tie points were not applicable, and therefore the original implementations of these algorithms were used.

3 Data and methods

3.1 Input data

Single swath Tbs were used as input to the algorithms. The SMMR data were obtained from the US National Snow and Ice Data Centre – NSIDC (25 October 1978 to 20 August 1987, Njoku, 2003), EUMETSAT CM-SAF provided the SSM/I data (covering 9 July 1987 to 31 December 2008, Fenig et al., 2013), and AMSR-E data were from NSIDC (from 19 June 2002 to 3 October 2011; Ashcroft and Wentz, 2003). The footprints of all the channels were matched and projected onto the following footprints: the 6 GHz footprint of 75 km × 43 km for AMSR; SSM/I and SMMR channels were averaged to approximately 75 km × 75 km areas for all channels, except 6 and 10 GHz of SMMR, which were used in their original resolution of 148 km × 95 km and 91 km × 59 km respectively.

It is important to note that different Tb data sets may have different calibration (an operation used to convert the radiometer counts into Tbs), and this can even be the case for

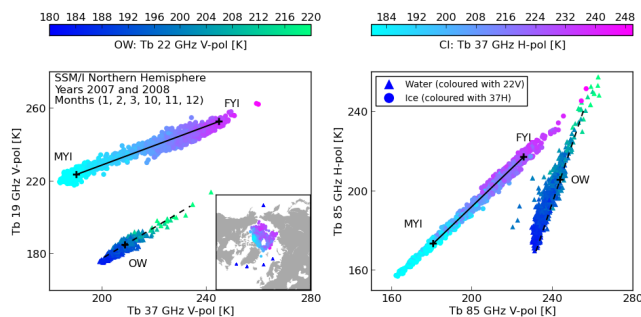


Figure 1. Coverage graphs for the SSM/I subset of the Northern Hemisphere's round robin data package (RRDP) in winters 2007 and 2008. Both brightness temperature (Tb) and spatial coverage are displayed. Open water (OW) and closed ice (CI) locations are shown by triangle circle symbols respectively. In the Tb diagrams, the OW symbols are coloured according to Tb22V values (left colour scale), while the CI symbols are coloured according to Tb37H values (right colour scale) (also in the embedded map). Solid and dashed lines show ice and OW lines respectively. FYI – first year ice, MYI – multi-year ice.

different versions of the same data set. Therefore the results presented in the following (especially the derived tie points) should be applied to other data sets with caution.

3.2 Validation data

Ideally, every algorithm should be evaluated over open water, at intermediate concentrations and over 100 % ice cover. In practice, it is difficult to find high quality reference data at intermediate concentrations, especially over the entire satellite footprint (e.g., 70 km \times 45 km for SSM/I at 19.3 GHz) and covering all seasons and ice types. Since the relationship between SIC and Tbs at all frequencies is assumed to be linear (except for the various noise contributions and a slight non-linearity of the ASI algorithm), we argue that errors at intermediate concentrations can be found by linear interpolation between errors at 0 and 100 %. Thus the RRDP was built for validation of the algorithms at 0 and 100 % SIC.

For the open water (OW) validation data set (SIC = 0 %), areas of open water were found using ice charts from Danish Meteorological Institute (DMI) and the US National Ice Center (NIC). The validation data set for 0 % SIC covered the following time periods: 1978–1987 (SMMR), 1987–2008 (SSM/I), and 2002–2011 (AMSR-E). For this paper we used the subsets of 1978–1985 for SMMR, 1988–2008 for SSM/I and the full AMSR-E data set.

To create the closed ice (CI) validation data set (SIC = 100 %), areas of convergence were identified in ENVISAT ASAR (Advanced SAR) derived sea ice drift fields available from the Polar View (<http://www.polarview.org>) and MyOcean (<http://www.myocean.eu>) projects. The basic assumption for the convergence method to provide 100 % sea ice is that during winter after 24 h of net convergence, the open wa-

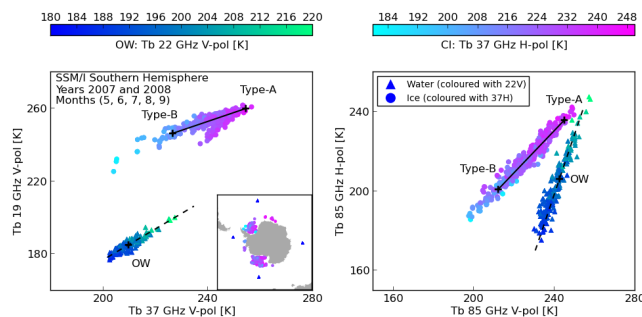


Figure 2. Same as Fig. 1, but in the Southern Hemisphere.

ter areas (leads) have either closed or refrozen. During summer this assumption does not hold due to the presence of melt ponds and the lack of refreezing. The CI data set is therefore only valid for accurate tests during winter (October–April in the Northern Hemisphere and May–September in the Southern Hemisphere). The CI data set covered years 2007–2008 for SSM/I and 2007–2011 for AMSR-E. SMMR was not included, because there were no SAR data available at that time. Note that the CI reference data set may still have some small fraction of residual open water. This however, does not jeopardize our use of the minimum standard deviation as a measure of algorithm performance, since we are only looking for the relative differences between algorithms.

Figure 1 (Northern Hemisphere) and Fig. 2 (Southern Hemisphere) show the coverage of a subset of the RRDP for the SSM/I instrument during winters of 2007 and 2008, which contains about 30 000 data points. The data set also includes the areas where there normally should not be any ice (blue triangles in the left panels of the figures) in order to test the ability of the algorithms to capture these correctly. The coverage of the RRDP is displayed both in terms of Tbs in the six channels of the SSM/I instrument (main panels), and spatial distribution (embedded maps). The other years, mentioned above and not shown in the figures, include approximately 4000 data points per year, except the SMMR period with about 1000 points per year, but the full data set extends from 1978 to 2011. We are confident that these locations represent the full amplitude of weather influence on measured Tbs and hence retrieved SICs. The left panels of Figs. 1 and 2 show the RRDP SSM/I subset in a classic (Tb37V, Tb19V)-space, which is the one sustaining the BF algorithm (or CV). The ice line extends along different ice types. In the Northern Hemisphere, ice types vary from MYI with lower values of Tb37H (colouring) to first-year ice (FYI) with higher values of Tb37H. In the Southern Hemisphere, the ice line extends between ice types A, representing FYI, and B, sea ice with a heavy snow cover (Gloersen et al., 1992). The so-called FYI and MYI tie points would typically lie along this line. The location of these different ice types can be seen on the embedded maps, and matches the expected distribution of older and younger ice in the Northern Hemisphere. In the (Tb37V,

Tb19V)-space, the OW symbols are grouped mostly in one point (OW tie point), but also present some spread due to the noise induced by geophysical parameters such as atmospheric water vapour, liquid water- and ice clouds, surface temperature variability and surface roughening by wind (all collectively called geophysical noise). Note that the majority of the symbols is grouped around one point and a lot less are spread along the line; however this is not easy to see from the plots because many points are hidden behind each other. The Tb22V colouring of the OW symbols illustrates how the variability of the OW signature is mostly driven by factors impacting also the 22 GHz channel (atmospheric water vapour content). The length and orientation of the OW spread, and especially the distance from the OW points to the line of ice points, determines the strength of algorithms built on these frequencies (e.g. BF or CV) at low SIC.

The right panels show the same areas but in a (Tb85V, Tb85H)-space. The ice line is very well defined (limited lateral spread), almost with a slope of one. However, it is difficult to define an OW point in this axis, since samples are now spread along a line. This “weather line” even intersects the ice line, illustrating that algorithms based purely in the (Tb85V, Tb85H)-space (like the ASI and N90 algorithms) have difficulties at discriminating open water from sea ice under certain atmospheric conditions (Kern, 2004).

The embedded maps display the winter location of the OW samples (same location for the whole RRD, for all instruments). In both hemispheres, these locations follow sea ice retreat in summer months to always capture ocean/atmosphere conditions in the vicinity of sea ice (not shown). The absence of data near the North Pole is due to the ENVISAT ASAR not covering areas north of 87°. The somewhat limited coverage of the sea ice samples of the Pacific sector in the Northern Hemisphere and many areas in the Southern Hemisphere is due to scene acquisition strategies of the ENVISAT mission.

After validation of the algorithms using the obtained data sets at 0 and 100 % we found that some of the algorithms are hard to validate at these values because they are not designed to enable retrievals outside the SIC range of 0–100 % (NASA Team2, ECICE) or are affected by a combination of large bias and nonlinearity at high SIC (ASI). This complicates comparison of these algorithms directly to other algorithms because these effects cut part of the SD of the retrieved SIC, while we aim at evaluating the full variability around these reference values (0 and 100 %). We implemented the algorithms (except these three) without cut-offs, thus allowing SIC values below 0 % and above 100 % as well. In order to be able to include these three algorithms in the inter-comparison, we have produced reference data sets of Tbs in every channel that correspond to values of SIC 15 and 75 % for an additional evaluation. We find that the algorithms’ performance at 15 % is representative of that at 0 %, and so is 75 % representative of 100 %. Therefore we show the results of evaluation only at SIC 15 and 75 %. By “representative”

here we mean that the algorithms’ ranking does not change significantly (more details in Sect. 4.1. and Table 2) even though the absolute values of SD are different.

The SIC 15 % data set was constructed by mixing the average FYI signature (Tb) with the OW data set, i.e.

$$Tb_{15} = 0.85 \cdot Tb(t) + 0.15 \cdot Tb_{100}(\bar{FY}), \quad (1)$$

where Tb0 (OW Tb) is multiplied by 0.85 (85 % water) and is varying with time, while Tb100 (ICE Tb) is multiplied by 0.15 (15 % ice) and is an average value of the FYI signature constant for all data points from the RRD (see above) for a given year. By using the SIC 15 % data set we aim at testing sensitivity of the algorithms to the atmospheric influence over the ocean and not to variability in emissivity of ice. Therefore we keep Tb of ice constant.

The SIC 75 % data set was generated similarly to the SIC 15 % data set, but with full variability of ice and 25 % of the average OW signature:

$$Tb_{75} = 0.75 \cdot Tb_{100}(t) + 0.25 \cdot Tb_0(\bar{OW}). \quad (2)$$

For the SIC 75 % data set the variability in Tbs is driven by variability at SIC 100 % (Tb100(t)), and not at SIC 0 %. We keep SIC 0 % Tb (Tb0) constant at the average value of the OW signature for a given year in order to avoid the influence of seasonally varying atmospheric conditions, which would have happened if we mixed variable SIC 100 % Tbs with variable SIC 0 % Tbs. As a consequence, the SIC 75 % data set will reflect a lower atmospheric variability than we would have to expect from a real SIC 75 % data set. Since the CI data set is only valid for the winter season, the same applies for this SIC 75 % data set.

It is noteworthy that we originally had designed a reference data set of SIC 85 %, but the positive biases of the ASI and NASA Team 2 algorithms were larger than 15 % and thus part of the SD was still cut-off at 100 %. Therefore it was necessary to use a SIC 75 % data set instead. The performance of the algorithms was consistent between the SIC 75, 85, and 100 % data sets, and therefore we consider such substitution acceptable. This way of mixing Tbs is not entirely physical since we are mixing Tbs seen through two different atmospheres. However, since the majority of the signal originates from either open water or ice, and we use fixed Tbs for the remaining fraction, we consider the results to be still reasonably representative for algorithm performance evaluation.

Normally, SIC products are truncated at 0 and 100 % to allow only physically meaningful SIC values, though this does not apply to ECICE because it employs the inequality constraint of $0\% < SIC < 100\%$ in its optimisation formulation. However, as the intention here is to investigate the statistical properties of the retrievals, we will analyse actual SIC as retrieved with the algorithms, without truncation, which means the retrieved values can be negative or above 100 %. Instrument and geophysical noise cause the Tbs to vary around the chosen tie points, and it cannot be avoided that at least a part of this noise is translated into some noise in the retrieved SIC.

Table 2. (a) Sea ice concentration (SIC) standard deviation (SD) (in %). Low SIC: 15 % (0 % for SMMR), winter (W) and summer (S). No open water filter applied. Ref – SD for the full SIC 0 % data set. **(b)** Sea ice concentration (SIC) standard deviation (SD) (in %). High SIC: 75 %, winter. No open water filter applied. Ref – SD for the full SIC 100 % data set.

(a) Northern Hemisphere										Southern Hemisphere								
Algorithm	Avg SD	AMSR-E		SSM/I		SMMR		Ref	Algorithm	Avg SD	AMSR-E		SSM/I		SMMR		Ref	
		S	W	S	W	S	W				S	W	S	W	S	W		
6H	2.8	2.0	2.5	–	–	2.8	3.8	3.0	6H	2.2	2.1	2.4	–	–	1.9	2.2	2.3	
CV	3.8	3.6	3.5	4.6	3.8	3.5	3.9	4.8	CV	3.5	3.4	3.4	3.9	4.0	3.0	3.2	3.9	
NT+CV	4.5	4.6	4.4	5.1	4.6	3.9	4.2	5.5	NT+CV	3.9	3.9	3.9	4.4	4.5	3.1	3.4	4.4	
OSISAF	4.7	5.3	4.8	5.4	4.7	3.8	4.1	5.2	OSISAF	4.3	4.8	4.8	4.9	5.0	3.2	3.4	4.3	
NT	5.4	5.8	5.5	5.9	5.5	4.7	4.8	6.6	NT	4.4	4.6	4.6	5.0	5.2	3.4	3.7	5.0	
BR	6.6	7.1	6.7	6.6	6.1	6.4	6.4	7.8	BR	6.1	6.7	6.5	6.3	6.2	5.5	5.7	6.9	
ESMR	7.2	7.6	7.0	7.9	6.9	7.1	6.5	–	NT2	6.2	6.3	6.3	6.2	6.0	–	–	–	
NT2	7.3	6.3	6.7	8.9	7.2	–	–	–	ESMR	6.7	7.3	7.1	6.9	6.9	6.0	6.1	–	
ECICE	9.4	10.7	10.0	8.8	8.2	–	–	–	ECICE	9.8	11.1	10.7	8.8	8.5	–	–	–	
BP	13.5	14.5	13.1	12.4	11.4	15.2	14.1	15.5	BP	16.2	17.0	16.2	14.4	14.1	17.6	18.0	17.7	
CV+N90	15.8	15.6	15.6	16.5	15.3	–	–	19.8	CV+N90	18.9	20.5	19.8	18.0	17.5	–	–	22.0	
ASI	28.5	31.3	30.1	27.0	25.7	–	–	–	ASI	28.9	32.5	31.1	26.3	25.6	–	–	–	
N90	28.8	28.9	28.8	29.6	27.8	–	–	35.9	N90	35.0	38.4	36.9	32.7	32.0	–	–	40.8	

(b) Northern Hemisphere					Southern Hemisphere				
Algorithm	Avg SD	AMSR-E	SSM/I	Ref	Algorithm	Avg SD	AMSR-E	SSM/I	Ref
BR	3.1	3.1	3.1	4.3	BR	2.9	2.8	3.0	4.5
OSISAF	3.1	3.1	3.1	4.3	OSISAF	2.9	2.8	3.0	4.5
NT+CV	3.1	3.1	3.2	4.4	6H	2.9	2.9	–	4.8
CV+N90	3.4	3.3	3.5	4.6	NT+CV	3.0	2.8	3.1	4.7
NT2	3.7	3.9	3.6	–	CV	3.4	3.0	3.7	5.4
6H	3.7	3.7	–	5.4	NT	4.3	4.2	4.4	6.6
NT	3.8	4.0	3.7	5.7	CV+N90	4.6	4.8	4.5	5.9
ASI	3.9	4.7	3.5	–	ECICE	4.9	5.4	4.6	–
CV	4.5	4.5	4.5	6.4	ASI	4.9	5.9	4.3	–
BP	4.6	5.2	4.3	6.2	NT2	5.8	5.7	5.8	–
ESMR	4.7	3.0	5.4	–	ESMR	7.1	3.9	8.6	–
N90	5.4	5.2	5.5	7.0	N90	8.1	8.4	7.9	10.4
ECICE	8.1	7.4	8.5	–	BP	9.0	8.7	9.2	13.1

3.3 Reference data set for melt pond sensitivity assessment

A daily gridded SIC and melt pond fraction (MPF) reference data set for the Arctic (Rösel et al., 2012a) was derived from clear-sky measurements of reflectances in channels 1, 3 and 4 of the MODerate resolution Imaging Spectroradiometer (MODIS) in June–August 2009. The MPF is determined from classification based on a mixed-pixel approach. It is assumed that the reflectance measured over each MODIS 500 m × 500 m grid cell comprises contributions from three surface types: melt ponds, open water, sea ice/snow (Rösel et al., 2012a). By using known reflectance values (e.g. Tschudi et al., 2008) a neural network was built, trained, and applied (Rösel et al., 2012a). MPF is given as fraction of sea ice area (not grid cell) covered by melt ponds. For the sensitivity analysis in this work, a total of 8152 data points were selected from this data set, so that SD of MPF over each 100 km × 100 km area was less than 5 %, SIC variations were less than 5 %, SIC itself was larger than 95 % and cloud cover less than 10 %.

The MODIS data were corrected for bias (Mäkynen et al., 2014) based on an inter-comparison between ENVISAT ASAR wide swath mode (WSM) imagery, in situ sea ice

surface observations, weather station reports and the daily MODIS MPF and SIC data set. It was found that the MODIS SIC was negatively biased by 3 % and MPF was positively biased by 8 %. An investigation of the 8-day composite data set of the MODIS MPF and SIC data set with regard to their seasonal development during late spring/early summer confirmed the existence of such biases.

MODIS SIC was only used for the summer period to evaluate the algorithms’ performance over melt ponds, but not for the SIC validation. This is due to the lack of a sufficiently quality-controlled MODIS SIC product with potential of a validation data set. The cloud filters developed for lower latitudes are not reliable enough in the polar latitudes. Moreover, identification of ice/water in the images depends on thresholds, which will bring the problem of tie points. The validation of the MPF data set by Rösel et al. (2012a) revealed accuracy of 5–10 %. Because of the methodology used, the MPF is tied to the other two surface types: open water in leads and openings between the ice floes and sea ice/snow. Therefore it can be assumed that the accuracy of the fraction of these two other surface types is of the same magnitude as that of the MPF: 5–10 %, which can be considered as insufficient for quantitative SIC evaluation.

3.4 Reference data set for the thin ice tests

Sensitivity of the algorithms to thickness of thin (≤ 50 cm) sea ice was evaluated using a thin ice thickness data set for the Arctic Ocean, compiled for this particular purpose. To produce this data set, large (100 km diameter) homogenous areas of $\sim 100\%$ thin ice were identified as areas with dark and homogenous texture by visual inspection of 175 ENVISAT ASAR WSM scenes. The same procedure as when producing ice charts was applied. Thin ice thickness was subsequently derived for these areas using ESA's L-band Soil Moisture and Ocean Salinity (SMOS) observations (Huntemann et al., 2014; Heygster et al., 2014). The data set covers the time period from 1 October to 12 December 2010 and consists of 991 sea ice thickness data points. For these selected grid cells AMSR-E Tbs were extracted and used as input to the SIC algorithms.

3.5 Substitution of weather filters by atmospheric correction

SIC retrievals can be contaminated due to wind roughening of the ocean surface, atmospheric water vapour and CLW, as well as precipitation. Traditionally, the atmospheric effects on the SIC retrievals are removed by applying an open water/weather filter based on gradient ratios of Tbs for SMMR (Gloersen and Cavalieri, 1986) and SSM/I (Cavalieri et al., 1995):

$$\text{SMMR: SIC} = 0 \text{ if } \text{GR}(18/37) > 0.07, \quad (3)$$

$$\begin{aligned} \text{SSM/I: SIC} = 0 \text{ if } \text{GR}(19/37) > 0.05 \\ \text{and/or } \text{GR}(19/22) > 0.045, \end{aligned} \quad (4)$$

where the gradient ratios of Tb18V (Tb19V) and Tb37V (GR(18/37) and GR(19/37)) are most sensitive to CLW and the gradient ratio of Tb19V and Tb22V (GR(19/22)) mainly detects water vapour. We tested the performance of this technique (more details in Sect. 4.4), and found that it is removing not only atmospheric effects but also ice itself, which we found to be unacceptable for a SIC algorithm.

Therefore we chose not to use the open water/weather filters, but implement an alternative solution, following Andersen et al. (2006) and Kern (2004). The suggested method consists of applying a more direct atmospheric correction methodology, where the input SSM/I Tbs in all the channels used by the algorithms are corrected with regard to atmospheric and surface effects using a radiative transfer model (RTM):

$$\text{Tb}_{\text{corr}} = \text{Tb}_{\text{measured}} - \left(\text{Tb}_{\text{atm}} - \text{Tb}_{\text{ref}} \right), \quad (5)$$

$$\text{Tb}_{\text{atm}} = \text{Tb}(f, p, \text{WS}, \text{WV}, \text{CLW}, \text{SST}, T_{\text{ice}}, \text{SIC}, \text{FMYI}), \quad (6)$$

$$\text{Tb}_{\text{ref}} = \text{Tb}(f, p, 0, 0, 0, \text{SST}_{\text{ref}}, T_{\text{ice ref}}, \text{SIC}, \text{FMYI}), \quad (7)$$

where f is frequency, p is polarisation, WS is wind speed, WV is water vapour, SST is sea surface temperature, T_{ice} is

ice temperature, and FMYI is MYI fraction (Meissner and Wentz, 2012; Wentz, 1997). Tb_{corr} is measured Tb minus the difference between simulations with (Tb_{atm}) and without (Tb_{ref}) atmospheric effects (Meissner and Wentz, 2012; Wentz, 1997). In order to calculate Tb_{ref} , zero values were assigned to WS, WV and CLW, while $\text{SST}_{\text{ref}} = 271.5$ K and $T_{\text{ice ref}} = 265$ K. 3-hourly fields of 10 m wind speed, total columnar water vapour, and 2 m air temperature from the ECMWF ERA-Interim numerical weather prediction (NWP) re-analysis were used in this process. Following the results of Andersen et al. (2006) we did not use CLW and precipitation from the NWP data because these are considered to be less consistent with the observed Tbs (also confirmed by our own analysis). Therefore CLW is 0 also when calculating Tb_{atm} in this case. The NWP model grid cells are collocated with the AMSR-E/SSM/I swath Tbs in time and space. Using the 3-hourly NWP fields we ensure a time difference between the NWP data and the satellite data to be within 1.5 h.

In order to evaluate the effect of suggested atmospheric correction for SSM/I we selected six test sites in the Arctic, which are subject to different weather types: for some it is more common to have storms and strong winds, and some are typically quieter. The total amount of points sampled at these locations is 2320 and covers the entire year 2008. The results obtained were similar for AMSR-E (not shown here).

3.6 The validation/evaluation procedure

Tbs from the three microwave radiometer instruments (AMSR-E, SSM/I and SMMR, Sect. 3.1) were extracted and collocated with the reference data sets introduced above for open water, closed ice, melt ponds, and thin ice in the RRDP. These Tb data were then used as input to the SIC algorithms.

The criteria for the validation and evaluation procedure were aimed at minimising the sensitivity to the atmospheric effects and surface emissivity variations as described in the Introduction. In addition, we considered the following aspects: (1) data record length: algorithms using near 90 GHz channels cannot be used before 1991 when the first functional SSM/I 85 GHz radiometer started to provide consistent data, (2) spatial resolution: ranges from over 100 km to less than 10 km for different channels and instruments, (3) performance along the ice edge, where new ice formation is common in winter, and (4) performance during the summer melt. Additional criteria for the algorithm selection were: the possibility of reducing regional error using, e.g., NWP data and forward models; and the possibility to use dynamic tie points. The latter is to reduce sensitivity to inter-sensor calibration differences and error sources, which may be characterised by seasonal and inter-annual variability and/or have global and regional climatological trends.

4 Results

4.1 Inter-comparison and validation of sea ice algorithms

To evaluate performance of the algorithms, SD (Table 2) and bias relative to the validation data sets (Sect. 3.2) were calculated for summer and winter separately. The algorithms in Table 2 are sorted by the average SD of all the cases, starting with the smallest one. These values are averages weighted by the number of years when data were available for each instrument, thus giving more weight to SSM/I as the one providing the longest data set. SSM/I data cover 21 years (1988–2008) for low-frequency algorithms, i.e. the algorithms using frequencies up to 37 GHz (except 6H because this channel was not available on SSM/I), and 17 years (1992–2008) for high-frequency algorithms. SMMR did not have high frequencies and thus only applies to the low-frequency algorithms (8.7 years, November 1978–1987). The reference column (Ref) in Table 2 contains the SD of the full SIC 0 % and SIC 100 % data sets. It shows that the SD of the algorithms relative to each other (that is, the algorithms' ranking), does not change significantly when substituting the SIC 100 % data set with SIC 75 %, and the SIC 0 % data set with SIC 15 %. However, the absolute values of SD are altered.

The high-frequency algorithms ASI and N90 have a clear difference in SDs at low and high SIC. This is also true for the CV+N90 algorithm, but the separation is smaller as this hybrid algorithm also contains a low-frequency component. The large SDs for these algorithms mainly originate from the low SIC cases, where the atmospheric influence is more pronounced than it is for the low-frequency algorithms. Winter SDs for most of the algorithms tend to be lower than the ones for summer in the same categories of SIC and instrument.

We chose not to show the bias in detail here because it was found to be sensitive to the choice of tie points. Since we thus were able to eliminate the bias for those algorithms which allowed implementation of the same set of tie points, we put more weight on SD in the algorithm evaluation. In the Northern Hemisphere, stronger negative biases were dominated by the high SIC cases (with the exception of the N90, CV+N90, NT2 and ASI), while stronger positive biases were dominated by the low SIC cases. Algorithms ASI, NT2 and ECICE were positively biased for all the cases in both hemispheres. Note that the algorithms ECICE and ASI were developed for the Northern Hemisphere, but were applied to both hemispheres in this study. These three algorithms are the only ones for which it was not possible to use the RRDP tie points as was done for the other algorithms, and this may explain part of the bias (see Sect. 4.5 for further discussion on tie points). For the algorithms with large biases and cut-offs at SIC 100 %, the bias reduces our ability to estimate their SD properly using the chosen approach and thus makes them look better than they really are at high SIC (> 75 %). For example, if real SIC is 75 %, an algorithm with a positive

bias of 20 % will have average SIC of 95 %, and by cutting-off all the values above 100 % it reduces the scatter, and thus SD, to only the values in 95–100 % interval. In contrast, for an algorithm with the same bias and no cut-off the full scatter will be preserved and represented by a higher SD.

At SIC 15 % the CV (BF) algorithm had the second lowest SD (3.8 % in the Northern Hemisphere and 3.5 % in the Southern Hemisphere) after the 6H algorithm. Even though the 6H showed such a low SD, we did not consider it as a suitable algorithm for a climate data set because this algorithm could not be applied to SSM/I data, which shortens the time series significantly. At SIC 75 % the BR algorithm had the lowest SD of 3.1 % in the Northern Hemisphere and 2.9 % in the Southern Hemisphere.

The difference in SD between summer and winter (only SIC 15 %) was lowest for the algorithms NT, NT+CV, BR, CV and OSISAF (average over both hemispheres and all three instruments amounted to 0.2–0.3 %). The algorithms ESMR, ECICE, 6H, NT2 and CV+N90 had higher summer–winter differences (0.4–0.5 %), while the remaining algorithms (BP, N90 and ASI) showed the highest values of 0.8–1.2 %.

4.2 Melt ponds

The SIC and MPF from MODIS were collocated with daily SIC retrieved by the algorithms in the Arctic Ocean for June–August 2009 to investigate the sensitivity of the algorithms to melt ponds. Due to the low penetration depth, we expect that passive microwave SIC algorithms interpret melt ponds as open water and hence in summer they provide the net ice surface fraction (C), which excludes leads and melt ponds, rather than traditional SIC. Therefore we compute corresponding parameter from the MODIS data:

$$C = (1 - W) = \text{SIC}_{\text{MODIS}} - \text{SIC}_{\text{MODIS}} \cdot \text{MPF}, \quad (8)$$

where W is surface fraction of water (leads + melt ponds). Figure 3 shows SIC calculated by four selected SIC algorithms (CV, BR, N90 and NT) as a function of C . Note that because of the limitation to $\text{MSIC} > 95 \%$ the variation in the net ice surface fraction is almost solely due to the variation in MPF, which was varying from 0 to 50 % for the selected data set.

There is a pronounced overestimation of the net ice surface fraction by the CV and BR algorithms that compose the OSISAF combination (however only BR is used for high SIC). For example, at $C = 90 \%$ the average SIC is 128 % (CV), 115 % (BR), 103 % (N90) and 100 % (NT). The slopes of the regression lines are close to one (0.9–1.2 for the shown algorithms), which agrees with the assumption that melt ponds are interpreted as open water by microwave radiometry. The NT algorithm shows SIC values closest to C (the least bias of the four algorithms), which adds to our argument for using this algorithm for defining areas of high SIC (NT > 95 %) for retrieval of the dynamic tie points (Sect. 4.5).

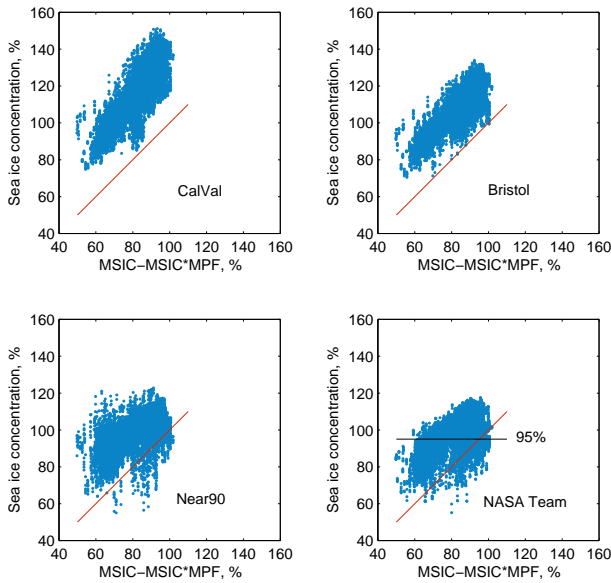


Figure 3. Sea ice concentration (SIC) in % (y axis) obtained from AMSR-E brightness temperatures by four algorithms (names shown in the panels) for the Arctic Ocean as a function of the net ice surface fraction obtained by MODIS for 21 June–31 August 2009 (where MSIC stands for MODIS SIC and MPF – melt pond fraction). The red lines show the one-to-one regressions. The black line shows the 95 % SIC for the NASA Team algorithm (the limit used for the dynamic ice tie point).

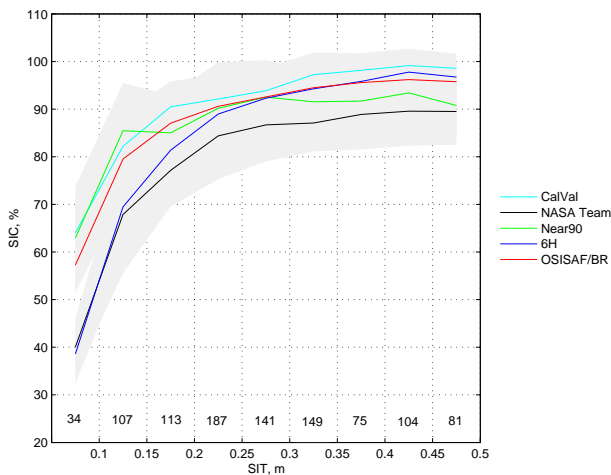


Figure 4. Sea ice concentration (SIC) calculated by the SIC algorithms (shown in colours) as a function of SMOS sea ice thickness (SIT) in areas of the Arctic Ocean, which are known to be ~ 100 % thin ice during the time period from 1 October to 12 December 2010. Grey shading shows standard deviations of the algorithms. Number of measurements in each bin is shown above the x axis (total number is 991). In this SIC range OSISAF is the same as BR.

4.3 Thin ice

The sensitivity of selected SIC algorithms (CV, BR, OSISAF, N90, NT and 6H) to thin sea ice thickness was investigated. Figure 4 shows SIC obtained by these algorithms as a function of sea ice thickness from SMOS (Sect. 3.4). The data are shown as averages for each sea ice thickness bin of 5 cm width with the number of measurements in each bin shown on the figure (total number of measurements is 991). The grey shading shows SD, which is calculated from all the SIC retrievals in the given bin. These SDs are calculated for each algorithm individually, but overlap each other on the figure. Since in the OSISAF combination the BR algorithm has weight of 1 for high SIC, these algorithms show identical results; therefore BR is not visible.

The SIC is known to be ~ 100 % for the cases selected, therefore one would expect all the curves to be horizontal and placed at high SIC. However, this is not going to be the case following published knowledge suggesting that SIC is underestimated for thin ice (Kwok et al., 2007; Grenfell et al., 1992). Hence, we are interested in the point where a given algorithm is no longer affected by the ice thickness. All the algorithms underestimate the SIC for ice thickness of up to 25 cm. Note that most of the algorithms also show a negative bias of about 5 % for ice thickness above 30 cm, i.e. ice which is not termed thin ice anymore. This could be caused by the fact that the thin ice identified in SAR images is on average smoother/less deformed and most likely has less snow than the ice used for the derivation of the sea ice tie points applied in the algorithms.

Out of the five algorithms shown, N90 levels off, that is the SIC value varies by less than 5 % between the neighbouring bins of SIT, at the lowest thicknesses (20–25 cm). The OSISAF and CV follow at the thicknesses of 25–30 cm, and NT and 6H at 30–35 cm. The slightly better performance of CV relative to OSISAF suggests a shift in the mixing of BR and CV in a new algorithm (using CV at higher intermediate concentrations); see the introduction of the SICCI algorithm in the discussion section. More details on the algorithm’s performance over thin ice can be found in Heygster et al. (2014).

4.4 Atmospheric correction

First we implemented traditional open water/weather filters (Eqs. 3 and 4), which work as ice-water classifiers. These filters set pixels to SIC 0 % when they are classified as ones subjected to a high atmospheric influence over open water. This efficiently removes noise due to the weather influence in open water regions.

However, we found, as did also Andersen et al. (2006), that open water/weather filters also eliminate low concentration ice (up to 30 %). This is illustrated in Fig. 5, where intermediate concentration data sets were generated using equations similar to Eq. (1) from the same Tbs as used for the algorithms’ inter-comparison (Sect. 4.1). The filter cor-

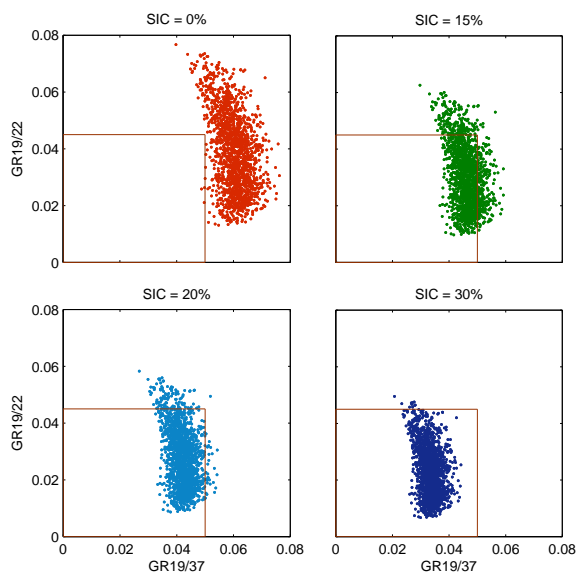


Figure 5. Demonstration of the open water/weather filter performance: gradient ratio (GR) 19/22 is plotted as a function of GR19/37 for SSM/I data in 2008 (entire year) for the Northern Hemisphere for sea ice concentration (SIC) of 0, 15, 20, and 30 %. The red square shows the value range outside which the open water/weather filter sets SIC values to 0 % (open water).

rectly identifies the pixels, which do not contain any ice (SIC = 0 %): practically all pixels are located outside the red square in the upper left plot. The filter keeps almost all the pixels containing sea ice (SIC = 30 %): almost all pixels are located inside the red square in the bottom right plot; only a handful values fall outside the range defined by the red box and is set to 0 %. However for the cases of SIC 15 and 20 %, which are shown here as an example, the filter sets SIC to 0 % for all the pixels outside the red square in the upper right and bottom left plots, which corresponds to 27 % of the total amount of pixels (3320) for the SIC 15 % and to 9 % for the SIC 20 %.

In order to avoid this truncation of real SIC by the open water/weather filter, we investigated an alternative approach where we applied atmospheric correction to the Tbs, as described in Sect. 3.5, before using them as input to the algorithms. The correction reduced the Tb variance by 22–35 % (19 and 37 GHz channels) and up to 40 % (near 90 GHz channels) when water vapour, wind speed and 2 m temperature were used in the correction scheme. Adding CLW as the fourth parameter worsened the results (19 and 37 GHz channels). CLW has high spatial and temporal variability and the current ERA Interim resolution and performance for CLW is not suitable for this correction. In the following the satellite data are therefore not corrected for the influence of CLW.

To illustrate the effect of the correction, we compared the SD of SIC computed from Tbs with and without correction for water vapour, wind speed and 2 m temperature (Fig. 6).

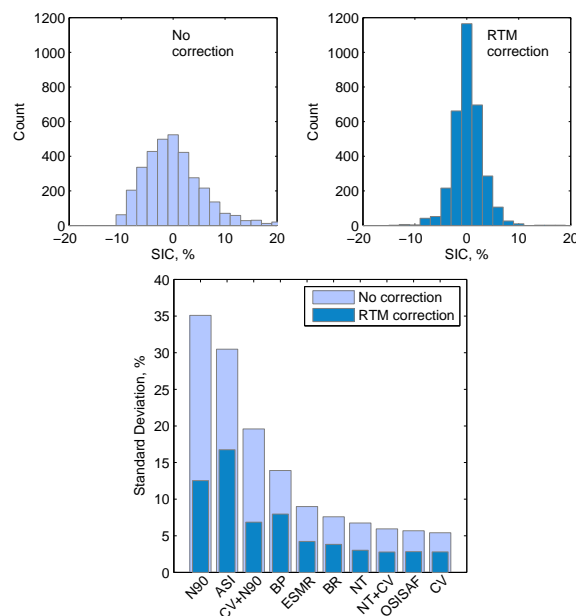


Figure 6. Histograms for SSM/I sea ice concentration (SIC) obtained by the OSISAF algorithm over open water (SIC = 0 %) in the Northern Hemisphere in 2008 (entire year) without correction (upper panel, left) and with radiative transfer model (RTM) correction (upper panel, right). The histograms contain 21 bins of 2 % SIC. Bottom panel: decrease in standard deviations for 10 SIC algorithms due to the atmospheric correction of the measured brightness temperatures.

The top plots show histograms of the SIC over open water for the OSISAF algorithm before the correction (left) and after (right). The distribution becomes clearly less noisy and tends to be more Gaussian-shaped. To show the effect of the correction on performance of all the algorithms (Table 1, except NT2 and ECICE), the SD of SIC is shown in the bottom plot. The SD has decreased by 48–65 % (of the original value) after the atmospheric correction for all the shown algorithms. The improvement due to the RTM correction shown in Fig. 6 is an average measure for all the 2320 samples. It should be noted that the tie points need to be adjusted to the atmospherically corrected data. The tie points given in Appendix A are for uncorrected data.

4.5 Dynamic tie points

As mentioned in the Introduction, not only sea ice area/extent is characterised by seasonal variability and has a trend, but so do also atmospheric and surface effects influencing the measured microwave emission. In order to compensate for these effects, we suggest that in an optimal approach tie points should be derived dynamically.

In order to generate dynamically adjusted daily tie points we first define the sampling areas for consolidated ice and open water at a distance of 100 km from the coasts. The area for the ice tie point is defined so that SIC is larger than 95 %

according to the NT algorithm and it is within the limits of maximum sea ice extent climatology (NSIDC, 1979–2007). The NT algorithm was chosen for this purpose because it is a standard relatively simple algorithm with little sensitivity to ice temperature variations (Cavalieri et al., 1984). The data for the open water tie point were selected geographically along two belts in the Northern and Southern hemispheres defined by the maximum sea ice extent climatology (200 km wide belt starting 150 km away from the climatology). Data points south of 50N were not used. A total of 15 000 data points per day were selected.

Then 5000 Tb measurements (every day) in these areas were randomly selected among the total of 15 000 data points and averaged using a 15-day running window (± 7 days) to reduce potential noise in daily values. Selection of only 5000 samples per day is to ensure that no days are weighted higher than others when there are differences in the number of data points from day to day. The 15-day window allows smoothing out of the synoptic scales of weather perturbations and at the same time capture the onset of ice emissivity changes due to summer melt or fall freeze-up. We believe that longer time windows will induce too much smoothing over the ice, while shorter time-periods will introduce too much noise (over open water). The scatter of all the obtained 15 000 data points per day was used as a tie point uncertainty, which contributes to the total per-pixel daily uncertainty retrieved for SIC.

An example of an ice tie point is shown in Fig. 7 by Tb19V and Tb37V (top and middle panels) and slope of the ice line according to the Bootstrap scheme (bottom panels). We chose to not show the tie points of the Bristol algorithm because the polarisation and frequency information from 19V, 37V and 37H channels is transformed into a 2-D plane defined by x and y components (see Smith, 1996 for more details), which are harder to relate to than Tbs. The open water tie points are not shown here as they have less seasonal variability (within 5 K). The dynamic tie point for ice is represented by an average of the fraction of FYI and MYI in the samples of all (± 7 days) selected ice conditions (NT > 95 %). Due to the change in the relative amount of FYI and MYI in the Arctic Ocean in recent years, the average ice tie point will move along the ice line in the Tb space.

Figure 7 demonstrates that the tie points are not constant values as it is assumed traditionally (static tie points from the RRDP, also averaged FYI and MYI values, are shown by horizontal lines), but rather geophysical parameters showing seasonal and inter-annual variations. This applies particularly to the melt season, which is highlighted by the grey vertical bars for three selected years in Fig. 7, bottom plots. Therefore the dynamic approach is more suitable for the SIC algorithms. The ice tie point may vary by about 30 K during 1 year, which amounts to approximately 8–10 % of the average value. Sensor drift and inter-sensor differences are also important aspects, which might cause an unrealistic trend in the

retrieved SIC when static tie points are applied. The dynamic tie point approach compensates for these effects.

A detailed description of the procedure to obtain dynamic tie points is given in the Appendix B. The tie points will vary with calibration of the input data/version number and source, so the tie points obtained here should not be used with other versions of the input data with potentially different calibration. The procedure on the other hand can be applied to all versions/calibrations of the input data.

5 Discussion

5.1 Algorithms inter-comparison and selection

Based on validation data sets of SIC 15 and 75 % we used variability (SD) in the SIC produced by the different algorithms as a measure of the sensitivity to geophysical error sources and instrumental noise. The errors from geophysical sources over open water are generated by wind induced surface roughness, surface and atmospheric temperature variability and atmospheric water vapour and CLW. Over ice, the errors are dominated by snow and ice emissivity and temperature variability, where parameters such as snow depth, and to some extent variability in snow density and ice emissivity are important (Tonboe and Andersen, 2004). The atmosphere plays only a minor role over ice except at near 90 GHz, where liquid water/ice clouds may still be a significant error source, especially in the marginal ice zone. At the same time near 90 GHz data might be less sensitive to changes in physical properties in ice and snow because of the smaller penetration depth relative to the other frequencies used.

The algorithms 6H, CV, BR, OSISAF, NT and NT+CV, showed the lowest SDs (Table 2). The 6 GHz channel was not available on SSM/I, which provides the longest time series, and therefore the 6H algorithm was not considered to be an optimal SIC algorithm for a climate data set. Bristol showed the lowest SD over high SIC (only winter is considered) while CV had the lowest SD for the low SIC cases, which suggests that combining these two algorithms would provide a good basis for an optimal SIC algorithm.

The differences in SDs between summer and winter are reflecting the sensitivity of different algorithms to wind, atmospheric humidity and other seasonally changing quantities. In addition, some of these quantities may have climatological trends. Therefore, small difference between the summer and winter SDs is an asset for an algorithm. The algorithms NT, NT+CV, BR, CV and OSISAF showed the lowest summer–winter differences in SD (0.2–0.3 % on average for both hemispheres and all three instruments).

Note that the two modes of the Bootstrap algorithm in this study were tested separately. The frequency mode (BF) of the original algorithm is applied only when Tb19V is below the ice line minus 5 K (Comiso, 1995), which is the case for both the 15 and 75 % cases. Otherwise the polarisation mode (BP)

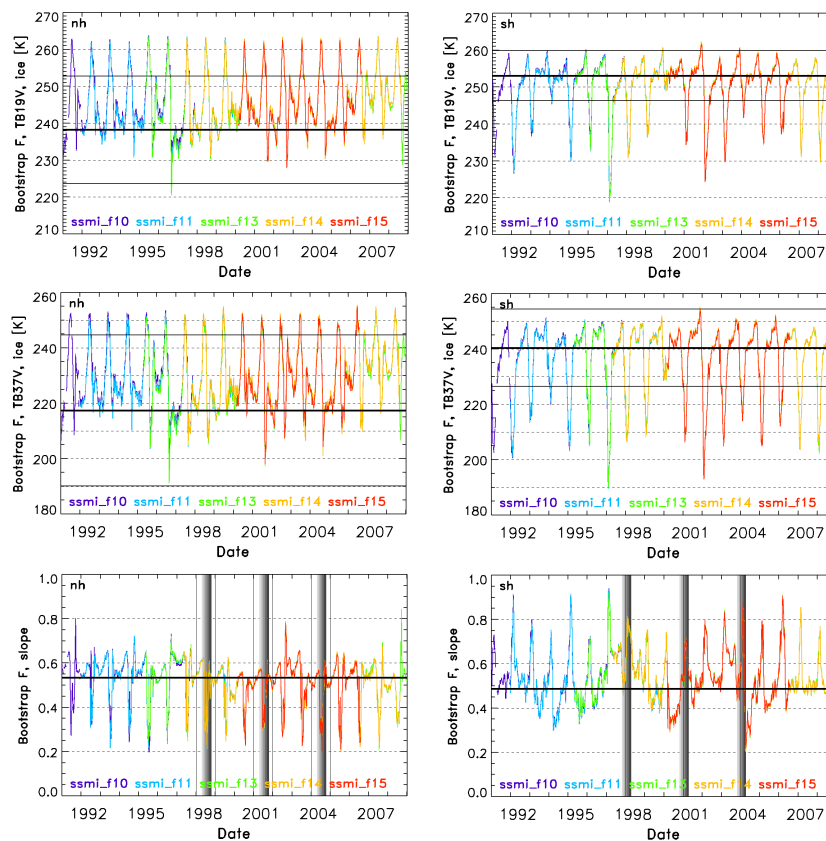


Figure 7. Examples of tie points time series for the Bootstrap F algorithm in the Northern Hemisphere (left panels) and in the Southern Hemisphere (right panels) (marked nh and sh respectively). Upper and middle panels show ice tie points Tb19V and Tb37V (brightness temperatures in 19V and 37V channels) respectively, and bottom panels show slopes. The vertical bars in light grey to dark grey colours denote the progressing melt season from May to September in the Northern and from November to March in the Southern Hemisphere.

should be applied. Thus, we did not show the tests of BP for what it is originally meant – SIC near 100 %. This algorithm was still evaluated along with all the others for SIC 100 %, and the test indicated that BP performed quite well, but BR showed somewhat lower SDs (by about 2 %) and therefore was selected for the hybrid algorithm.

Evaluation of typical processing chain components, such as climatological masks, land contamination correction and gridding from swath to daily maps, is not covered by this study. This work is devoted to a systematic evaluation of algorithms using a limited but very accurate reference data set (the RRDP). For the consistent evaluation exercise completed here, areas in the vicinity of land were excluded.

5.2 The SICCI algorithm

During the algorithm evaluation and inter-comparison exercise the SICCI algorithm was introduced. It is a slightly modified version of the OSISAF algorithm in order to achieve better performance over areas with thin ice. Similar to the OSISAF algorithm, it is constructed as a weighted combination of CV and BR algorithms. In order to take more advan-

tage of the better performance of CV for thin ice, the weights are defined as follows. For SIC below 70 %, as obtained by CV, the weight of this algorithm is $w_{CV} = 1$, while for high values (≥ 90 %) it is $w_{CV} = 0$. Different weights were tested on the thin ice data set. The optimal values were chosen so that the hybrid algorithm performs better over thin ice, and at the same time keeps its performance in other conditions at the same level as the original OSISAF algorithm. For the values between 70 and 90 % the weight for CV is defined as

$$w_{CV} = 1 - \frac{SIC_{CV} - 0.7}{0.2}, \quad (9)$$

where SIC_{CV} is SIC (between 0 and 1) obtained by CV. The weight of BR is $1 - w_{CV}$. In the original OSISAF algorithm, values of 0 % and 40 % were used.

5.3 Melt ponds

Figure 3 illustrates that the four algorithms shown (but this is also valid for all other algorithms) are sensitive to the MPF, which may mean that melt ponds are interpreted as open water by the algorithms. This is because microwave penetration into water is very small. Rösel et al. (2012b) showed that in areas with melt ponds SIC algorithms (ASI, NT2 and Bootstrap) underestimate SIC by up to 40 % (corresponding to a MPF close to 40 %). One may still argue that melt ponds should have different signature from that of open water due to the difference in their salinity. However, for frequencies as high as those used in the algorithms (19 GHz and higher) and in cold water the salinity was found to play a less significant role (Meissner and Wentz, 2012; see also Ulaby et al., 1986). In addition, the footprint size is so large (e.g. 70 km × 45 km for 19.3 GHz channel on SSM/I) that an unresolvable mixture of surfaces might be present in it.

For some applications it is important to interpret ponded ice as ice and not as open water. However, we believe that satellite microwave radiometry is incapable of estimating SIC correctly if a certain fraction of the sea ice is submerged under water. Therefore, we suggest accepting what microwave sensors actually can do: estimate the net ice surface fraction. The latter is similar to the well known SIC during most of the year until melt ponds have formed on top of the ice in the melting season. Additional data sources (for example MODIS) could be used to supplement summer retrievals of SIC. Unlike with microwave radiometry, open water in leads and openings between the ice floes can be discriminated from open water in melt ponds on ice floes by means of their different optical spectral properties.

The algorithms shown in Fig. 3 overestimate SIC, which can be caused by higher Tbs in the areas between melt ponds. During summer these areas comprise wet snow and/or bare ice with a different physical structure than during winter. Therefore these areas have radiometric properties potentially different from those of winter, when the RRDP ice tie points were developed. This is demonstrated by Fig. 7 where the grey bars highlight that seasonal changes in the dynamic tie points to be used in the SICCI algorithm vary particularly during the summer months. The comparison of passive microwave algorithms and MODIS SIC in Rösel et al. (2012b) showed that in the areas without melt ponds the passive microwave SIC was larger than that of MODIS. Note also, however, that the tie points used here differ from those in Rösel et al. (2012b). This complicates a quantitative comparison of their results with ours and, in turn, calls for such kind of systematic, consistent evaluation and inter-comparison as shown in the present paper. Using the dynamic tie points approach (Sect. 4.5) decreases this effect: the OSISAF algorithm on average overestimated SIC by 24 % when fixed RRDP tie points were used (same as in the Fig. 3) and by 17 % with dynamical tie points (this example is not shown in the figure). However, even with dynamic tie points, it is likely that

the areas selected to derive the 100 % ice tie point during summer contain melt ponds. If this would be the case and if the selected area would have an average melt pond fraction of 10 %, then the 100 % ice tie point would not represent 100 % ice but a net ice surface fraction of only 90 %. When estimating dynamic tie points, an initial SIC estimate is needed. In our case this was done using pixels with NT SIC > 95 %. This algorithm is less sensitive to the surface temperature variations because it is based on polarisation and gradient ratios of Tbs, which more or less cancels out the physical temperature (Cavalieri et al., 1984). In addition, it is interpreting melt ponds as open water (Sect. 4.2). This means that using NT SIC > 95 % we select areas with reasonably low MPF to determine the signature of ice, which helps to avoid contamination of ice tie point by measurements containing melt ponds. A much more detailed discussion of the results for melt ponds is underway in a separate paper.

Another relevant aspect is effect of refrozen melt ponds on passive microwave signatures, which was not addressed in this study. It has not yet been covered thoroughly in the literature (except Comiso and Kwok, 1996) and thus represents an interesting topic for future studies. Per definition, refrozen melt ponds occur on the MYI and they are formed of fresh water, which means these two surfaces have different density and structure with presumably much less air bubbles in the refrozen melt pond than in MYI. This may partially explain the large variability in MYI signatures.

5.4 Thin ice

All the algorithms shown for the thin ice test (Fig. 4) underestimate the SIC for ice thicknesses up to 35 cm, which confirms findings by others (see Introduction). The 6H algorithm showed the highest sensitivity to the sea ice thickness, which is in agreement with Scott et al. (2014) showing that Tbs at 6 GHz can be used to estimate thin ice thickness. The least sensitivity to thickness of thin ice was observed for the N90 algorithm; the SIC obtained by this algorithm was independent of SIT values already at thicknesses of 20–25 cm. This is caused most likely by a smaller penetration depth in the near-90 GHz channels (shorter wave length) (see also Grenfell et al., 1998). OSISAF and CV had the second least sensitivity (levelled off at 25–30 cm), which adds more weight to the choice of an OSISAF-like combination as an optimal algorithm. We suggest that, when areas of thin ice are interpreted as reduced concentration, this should be clearly stated along with an eventual SIC product. This issue is similar to melt ponds in a way that there is no simple solution, and one should be aware of the limitation, which we demonstrate by the Fig. 4. In this study we manage to quantify the effect and thus allow modellers to assimilate SIC data in a more proper way. Implementation of an algorithm that accounts for thin ice (Röhrs and Kaleschke, 2012; Röhrs et al., 2012; Naoki et al., 2008; Grenfell et al., 1992) as an additional module to this optimal algorithm could be a potential improvement. For

shorter data sets, a thin ice detection technique developed for AMSR-E and SSMIS (Mäkynen and Similä, 2015) can be incorporated in order to provide a thin-ice flag.

5.5 Atmospheric correction

Using the RTM of Wentz (1997), we concluded that over open water, most of the algorithms were sensitive to CLW although the sensitivities of CV and 6H were small (not shown). However, we found that CLW and precipitation are less reliable in ERA Interim data and therefore represent error sources, which we cannot correct for using the suggested method. This is also confirmed in literature (Andersen et al., 2006). Therefore, it is important to select a less sensitive algorithm (e.g., CV). The algorithms BP, ASI and N90 were very sensitive to this component (not shown). Most of the algorithms were sensitive to water vapour over open water, especially BP, ASI and N90. Some of the algorithms show some sensitivity to wind (ocean surface roughness), e.g. NT and BR. But we corrected for the water vapour and wind roughening by applying the RTM correction (see Fig. 6).

It was found that atmospheric correction of Tbs for wind speed, water vapour and temperature reduces the SD in retrieved SIC for all tested algorithms at low SIC. In addition, the shape of SIC distribution got closer to Gaussian after the correction (Fig. 6). The OSISAF combination (19V/37V) improved significantly after correction over open water. Over ice the atmospheric influence is small, as was shown by the ERA Interim data we used – total water vapour and CLW content over ice were much smaller than over ocean. The atmosphere over ice is generally much colder than over ocean, and cold air can contain much less moisture (including clouds) than warmer air. In addition, when the emissivity is much larger over sea ice (e.g. FYI) than open water, a change in the atmospheric water vapour imposes a smaller change in the Tb measured over sea ice compared to the one measured over open water (Oelke, 1997). Correction for the effect of surface temperature variations at SIC 100 %, where 2 m temperature was used as a proxy, was not effective. This can be explained by the fact that different wavelengths penetrate to different depth in the ice and thus should retrieve different temperatures.

The limitation of the applied correction is that, even though it reduces the atmospheric noise considerably, it does not remove it completely. There will therefore be some residual atmospheric noise over the ocean. We argue that this noise is more acceptable in a SIC algorithm than the removal of ice, but admit that this is debatable and for some applications the removal of ice may be preferable.

5.6 Dynamic tie points

The advantages of the suggested dynamical approach to retrieve tie points can be listed as follows. Firstly, it ensures long-term stability in sea ice climate record and decreases

sensitivity to noise parameters with climatic trends. This is of importance because both sea ice area/extent and the geophysical noise parameters (sea ice emissivity, atmospheric parameters) have climatic trends. Also, as model study by Willmes et al. (2014) showed, emissivity of FYI covered by snow is characterised by seasonal and regional variations caused by atmospherically driven snow metamorphism. Secondly, the dynamical tie points are needed when accurately quantifying the SIC uncertainties. Thirdly, the dynamic tie point method in principle compensates for inter-sensor differences in a consistent manner, so no additional attempt was considered necessary to compensate explicitly for sensor drift or inter-sensor calibration differences (the SSM/I data have been inter-calibrated but not with the SMMR data set).

The seasonal cycle in the tie points can be tracked across platforms (Fig. 7). Thus, the tie points are naturally changing geophysical parameters (or quantities obtained from such parameters), and should be dynamic as opposed to the traditional static approach. The variation amounts to approximately 20–30 K, which corresponds to about 8–12 % of the average value, and the peaks in the variation occur in summer. Thus, increased variability in late spring/early summer connected to melt onset and consequent snow metamorphoses, reported by Willmes et al. (2014), is confirmed in our study.

The dynamic tie points approach is only applied in time, not in space. The aim of this study is to identify an optimal SIC algorithm for a climate data set, which requires transparent description of techniques and uncertainties. It would be difficult to come up with a proper uncertainty estimate in case we divide our region of interest – more or less arbitrarily – into sub-regions.

One might argue that different tie points for MYI and FYI can still be used. However, computation of the uncertainty at the boundary of both regions will become problematic. How shall one treat mixed pixels? And – most importantly – one would need a validated quality-controlled ice type data set spanning the entire period. Therefore, we would recommend that regional (dynamic) tie points would be an ideal tool for regional applications and for near-real time SIC retrieval of spatially limited areas, but not for a climate data set.

6 Conclusions

A sea ice concentration (SIC) algorithm for climate time series should have low sensitivity to error sources, especially those that we cannot correct for (cloud liquid water (CLW) and precipitation, see Sect. 5.5) and those, which may have climatic trends. When correcting for errors it is important to adjust the tie points in order to avoid introducing artificial trends from the auxiliary data sources (e.g., numerical weather prediction, NWP, data). Therefore the preferred algorithm should allow the tie points to be adjusted dynamically. The latter is necessary to compensate for climatic

changes in the radiometric signature of ice and water, as well as eventual instrumental drift and inter-instrument bias. In addition, this algorithm should be accurate over the whole range of SIC from 0 to 100%. Along the ice edge spatial resolution and sensitivity to new ice and atmospheric effects is of particular concern. In order to produce a long climate data record, it is also important that the algorithm is based on a selection of channels for which the processing of long time-series is possible, which are currently 19 and 37 GHz. The comprehensive algorithm inter-comparison study reported here leads to following conclusions.

- The CalVal algorithm is among the best (low standard deviation (SD), Table 2a) of the simple algorithms at low SIC and over open water.
- The Bristol algorithm is the best (lowest SD, Table 2b) for high SIC.
- OSISAF-like combination of CalVal and Bristol is a good choice for an overall algorithm, using CalVal at low SIC and Bristol at high SIC.

In addition we conclude that

- Melt ponds are interpreted as open water by all algorithms.
- Thin ice is seen as reduced SIC by all algorithms.
- After atmospheric correction of Tbs, low SIC became less uncertain (less noisy) than high SIC.
- Near 90 GHz algorithms are very sensitive to atmospheric effects at low SIC.
- All 10 algorithms shown in the Fig. 6 improve substantially when brightness temperatures (Tbs) are corrected for atmospheric effects using radiative transfer model (RTM) with NWP data. The additional 3 algorithms by nature could not be corrected/tested for this.
- The dynamic tie points approach can reduce systematic biases in SIC and alleviate the seasonal variability in SIC accuracy.

It is clear from these conclusions that there is no one single algorithm that is superior in all criteria, and it seems that a combination of algorithms (e.g., OSISAF or SICCI) is a good choice. An additional advantage of using a set of 19 and 37 GHz algorithms is that the data set extends from fall 1978 until today and into the foreseeable future.

Over ice the Bristol algorithm, chosen for the high SIC retrievals, is sensitive to the snow and ice temperature profile as well as to ice emissivity variations. Surface temperature is quantified in most NWP models, which means that there is a potential for correction. The Bristol algorithm performance over melting ice is good because the SIC as a function of net ice surface fraction has a slope close to one. The Bristol

algorithm as other algorithms has a clear seasonal cycle in the apparent ice concentration at 100% SIC when using static tie points. This means that dynamic tie points are an advantage when using Bristol (as with most of the other algorithms).

Over open water the CalVal algorithm, chosen for the low SIC retrievals, is among the algorithms with the lowest overall sensitivity to error sources including surface temperature, wind, and atmospheric water vapour. Importantly, the CalVal is relatively insensitive to CLW, which is a parameter we cannot correct for due to the uncertainty of this parameter in the NWP data at high latitudes. The response of CalVal to atmospheric correction gives a substantial reduction in the noise level. The response of CalVal to thin ice is better than that of the other 19 and 37 GHz algorithms and comparable to near 90 GHz algorithms.

Therefore we suggest that an OSISAF or SICCI type of algorithm with dynamic tie points and atmospheric correction could be a good choice for SIC climate data set retrievals. The selection of tie points should be done with careful attention to the melt pond issues in order to avoid melt pond contamination of the tie points in summer. Correction for wind speed, water vapour and surface temperature provides a clear noise reduction, but we found no improvement from correcting for NWP CLW.

In spite of their high resolution and good skill over ice, the near-90 GHz algorithms have some limitations for a SIC climate data set because the near-90 GHz data were not available before 1991, and they are very sensitive to the atmospheric error sources over open water and near ice edge such as CLW. Finer spatial resolution achieved by the high-frequency channels does not reduce the weather-induced SIC errors over open water and near ice edge. Model data used in the RTM to correct for the influence of surface wind speed, water vapour and air temperature have a coarser spatial resolution, and hence will cause artifacts in the RTM-based correction. The remaining weather effects we cannot correct for (CLW and precipitation) will become even worse and more difficult to correct for because the model is even less capable of providing the information for this parameters at the same spatial scale as would be required. Their skill over ice is approximately the same as the one of the selected Bristol algorithm.

In the presented work we suggested a number of parameters, which could be used in order to select an optimal approach to retrieval of SIC climate data set. We also suggested an approach that satisfies these requirements. However, we do not claim the suggested approach to be the best one, taking into account that there is still a lot of potential for improvement in passive microwave methods.

Appendix A: The round robin data package (RRDP) tie points

Table A1. The RRDP tie points: brightness temperatures in K.

	AMSR-E			SSM/I			SMMR			
	OW	FYI	MYI	OW	FYI	MYI	OW	FYI	MYI	
Northern Hemisphere	6V	161.35	251.99	246.04			153.79	251.99	246.04	
	6H	82.13	232.08	221.19			86.49	232.08	221.19	
	10V	167.34	251.34	239.61			161.81	251.34	239.61	
	10H	88.26	234.01	216.31			95.59	234.01	216.31	
	18V	183.72	252.15	226.26	185.04	252.79	223.64	176.99	252.15	226.26
	18H	108.46	237.54	207.78	117.16	238.20	206.46	111.45	237.54	207.78
	22V	196.41	250.87	216.67	200.19	250.46	216.72	185.93	250.87	216.67
	22H	128.23	236.72	199.60				135.98	236.72	199.60
	37V	209.81	247.13	196.91	208.72	244.68	190.14	207.48	247.13	196.91
	37H	145.29	235.01	184.94	149.39	233.25	179.68	147.67	235.01	184.94
	Near90V	243.20	232.01	187.60	243.67	225.54	180.55			
	Near90H	196.94	222.39	178.90	205.73	217.21	173.59			
Southern Hemisphere	6V	159.69	257.04	254.18			148.60	257.04	254.18	
	6H	80.15	236.52	225.37			83.47	236.52	225.37	
	10V	166.31	257.23	251.65			159.12	257.23	251.65	
	10H	86.62	238.50	221.47			93.80	238.50	221.47	
	18V	185.34	258.58	246.10	185.02	259.92	246.27	175.39	258.58	246.10
	18H	110.83	242.80	217.65	118.00	244.57	221.95	110.67	242.80	217.65
	22V	201.53	257.56	240.65	198.66	257.85	242.01	186.10	257.56	240.65
	22H	137.19	242.61	213.79				129.63	242.61	213.79
	37V	212.57	253.84	226.51	209.59	254.39	226.46	207.57	253.84	226.51
	37H	149.07	239.96	204.66	152.24	241.63	207.57	149.60	239.96	204.66
	Near90V	247.59	242.81	210.22	242.41	244.84	211.98			
	Near90H	207.20	232.40	197.78	206.12	235.76	200.88			

OW: open water, FYI: first year ice, MYI: multi-year ice.

Appendix B: Retrieval of the dynamic tie points

Computing of the dynamic tie points involves two steps. First, a large number of characteristic Tb samples are selected for each day. Then, these data samples are aggregated over a temporal sliding window.

B1 The open water tie point

The open water data samples are selected geographically within the limits of two 200 km wide belts, one in each hemisphere. Each belt follows the mask of a maximum sea ice extent climatology, which was first extended 150 km away from the pole of the respective hemisphere. A land mask extending 100 km into open sea ensures that the open water signatures are not contaminated by land spill-over effects. In the Northern Hemisphere, data points south of 50N are discarded. A maximum of 5000 randomly selected open water data samples are kept per day.

The daily open water tie point is computed as the average Tb of all selected open water data samples in a centred temporal sliding window (± 7 days). The open water tie point is computed separately for each hemisphere.

B2 The sea ice tie point

The sea ice data samples are selected geographically within a maximum sea ice extent climatology for each hemisphere. The ice tie point data must in addition correspond to a SIC greater than 95 %, as retrieved by the NASA Team algorithm using the tie points from the Appendix A. Additional masks ensure that samples are taken away from the coastal regions. A maximum of 5000 sea ice data samples are kept per day.

The daily sea ice tie point is computed over the same temporal sliding window as the open water tie point, and is computed separately for each hemisphere. The slope and offset of the ice line are computed using principal component analysis. The ice line is the line in Tb space that goes through the FYI and MYI points (type-A and type-B ice in the Southern Hemisphere, see Figs. 1 and 2). Since the total SIC is our target (and not the partial concentrations of ice types), alternative versions of the CV and Bristol algorithms that rely on the slope and offset of the ice line were implemented. Additional criteria would be needed for further splitting the sea ice data samples into tie points based on ice types; this is not considered here.

A similar approach to deriving dynamic tie points is implemented for the sea ice concentration reprocessed data set, and operational products of the EUMETSAT OSISAF.

Acknowledgements. This work was completed in the context of ESA Climate Change Initiative, Sea Ice project (SICCI) and was funded by ESA. The work of S. Kern was supported by the Center of Excellence for Climate System Analysis and Prediction (CliSAP). Support from the International Space Science Institute (ISSI), Bern, Switzerland, under project No. 245: Perta Heil and Stefan Kern, “Towards an integrated retrieval of Antarctic sea ice volume” is acknowledged. The EUMETSAT OSISAF (<http://osisaf.met.no>) granted access to an implementation of its SIC processing software, in particular the dynamic tie point retrieval process (see Appendix B). The authors would like to thank Timothy Williams and Richard Danielson for their proofreading of the manuscript.

Edited by: C. Haas

References

- Andersen, S., Tonboe, R., Kern, S., and Schyberg, H.: Improved retrieval of sea ice total concentration from spaceborne passive microwave observations using numerical weather prediction model fields: an intercomparison of nine algorithms, *Remote Sens. Environ.*, 104, 374–392, 2006.
- Andersen, S., Tonboe, R., Kaleschke, L., Heygster, G., and Pedersen, L. T.: Intercomparison of passive microwave sea ice concentration retrievals over the high-concentration Arctic sea ice, *J. Geophys. Res.*, 112, C08004, doi:10.1029/2006JC003543, 2007.
- Ashcroft, P. and Wentz, F. J.: AMSR-E/Aqua L2A Global Swath Spatially-Resampled Brightness Temperatures, Version 2, NASA DAAC at the National Snow and Ice Data Center, Boulder, Colorado USA, doi:10.5067/AMSR-E/AE_L2A.002, 2003.
- Brucker, L., Cavalieri, D. J., Markus, T., and Ivanoff, A.: NASA Team 2 Sea Ice Concentration Algorithm Retrieval Uncertainty, *IEEE T. Geosci. Remote*, 52, 7336–7352, doi:10.1109/TGRS.2014.2311376, 2014.
- Cavalieri, D. J.: A microwave technique for mapping thin sea ice, *J. Geophys. Res.*, 99, 12561–12572, doi:10.1029/94JC00707, 1994.
- Cavalieri, D. J. and Parkinson, C. L.: Arctic sea ice variability and trends, 1979–2010, *The Cryosphere*, 6, 881–889, doi:10.5194/tc-6-881-2012, 2012.
- Cavalieri, D. J., Gloersen, P., and Campbell, W. J.: Determination of sea ice parameters with the NIMBUS 7 SMMR, *J. Geophys. Res.*, 89, 5355–5369, 1984.
- Cavalieri, D. J., Burns, B. A., and Onstott, R. G.: Investigation of the effects of summer melt on the calculation of sea ice concentration using active and passive microwave data, *J. Geophys. Res.*, 95, 5359–5369, 1990.
- Cavalieri, D. J., Germain, K. S., and Swift, C. T.: Reduction of weather effects in the calculation of sea ice concentration with the DMSP SSM/I, *J. Glaciol.*, 41, 455–464, 1995.
- Comiso, J. C.: Characteristics of arctic winter sea ice from satellite multispectral microwave observations, *J. Geophys. Res.*, 91, 975–994, 1986.
- Comiso, J. C.: SSM/I Sea Ice Concentrations Using the Bootstrap Algorithm, NASA Reference Publication 1380, NASA Center for Aerospace Information, 800 Elkridge Landing Road, Linthicum Heights, MD 21090-2934, (301) 621-0390, 1995.
- Comiso, J. C.: Enhanced Sea Ice Concentrations and Ice Extents from AMSR-E Data, *Journal of The Remote Sensing Society of Japan*, 29, 199–215, doi:10.11440/rssj.29.199, 2009.
- Comiso, J. C. and Kwok, R.: Surface and radiative characteristics of the summer Arctic sea ice cover from multisensor satellite observations, *J. Geophys. Res.*, 101, 28397–28416, 1996.
- Eastwood, S. (Ed.): Ocean & Sea Ice SAF (OSISAF) Sea Ice Product Manual, Version 3.8., available at: <http://osisaf.met.no> (last access: May 2012), 2012.
- Fennig, K., Andersson, A., and Schröder, M.: Fundamental Climate Data Record of SSM/I Brightness Temperatures, Satellite Application Facility on Climate Monitoring, doi:10.5676/EUM_SAF_CM/FCDR_SSMI/V001, 2013.
- Fetterer, F. and Untersteiner, N.: Observations of melt ponds on Arctic sea ice, *J. Geophys. Res.*, 103, 24821–24835, 1998.
- Gloersen, P. and Cavalieri, D. J.: Reduction of weather effects in the calculation of sea ice concentration from microwave radiances, *J. Geophys. Res.*, 91, 3913–3919, 1986.
- Gloersen, P., Campbell, W. J., Cavalieri, D. J., Comiso, J. C., Parkinson, C. L., and Zwally, H. J.: Arctic and Antarctic Sea Ice, 1978–1987: satellite passive microwave observations and analysis, NASA SP-511, NASA, Washington, D.C., 1992.
- Grenfell, T. C., Cavalieri, D. J., Comiso, J. C., Drinkwater, M. R., Onstott, R. G., Rubinstein, I., Steffen, K., and Winebrenner, D. P.: Considerations for microwave remote sensing of thin sea ice, in: *Microwave Remote Sensing of Sea Ice*, edited by: Carsey, F. D., American Geophysical Union, Washington, D.C., doi:10.1029/GM068p0291, 1992.
- Grenfell, T. C., Barber, D. G., Fung, A. K., Gow, A. J., Jezek, K. C., Knapp, E. J., Nghiem, S. V., Onstott, R. G., Perovich, D. K., Roesler, C. S., Swift, C. T., and Tanis, F.: Evolution of electromagnetic signatures of sea ice from initial formation to the establishment of thick first year ice, *IEEE T. Geosci. Remote*, 36, 1642–1654, 1998.
- Heygster, G., Huntemann, M., Ivanova, N., Saldo, R., and Pedersen, L. T.: Response of passive microwave sea ice concentration algorithms to thin ice, *Proceedings Geoscience and Remote Sensing Symposium (IGARSS)*, 2014 IEEE International, 13–18 July, Quebec City, QC, 3618–3621, doi:10.1109/IGARSS.2014.6947266, 2014.
- Huntemann, M., Heygster, G., Kaleschke, L., Krumpfen, T., Mäkyänen, M., and Drusch, M.: Empirical sea ice thickness retrieval during the freeze-up period from SMOS high incident angle observations, *The Cryosphere*, 8, 439–451, doi:10.5194/tc-8-439-2014, 2014.
- Ivanova, N., Pedersen, L. T., and Tonboe, R. T.: Product Validation and Algorithm Selection Report (PVASR): Sea Ice Concentration, version 1.0, 20 June 2013, Doc Ref: SICCI-PVASR (SIC), European Space Agency, available at: http://esa-cci.nersc.no/?q=webfm_send/148 (last access: 10 September 2015), 2013.
- Ivanova, N., Johannessen, O. M., Pedersen, L. T., and Tonboe, R. T.: Retrieval of Arctic sea ice parameters by satellite passive microwave sensors: a comparison of eleven sea ice algorithms, *IEEE T. Geosci. Remote*, 52, 7233–7246, 2014.
- Kaleschke, L., Lupkes, C., Vihma, T., Haarpaintner, J., Bochert, A., Hartmann, J., and Heygster, G.: SSM/I Sea ice remote sensing for mesoscale ocean–atmosphere interaction analysis, *Can. J. Remote Sens.*, 27, 526–537, 2001.

- Kern, S.: A new method for medium-resolution sea ice analysis using weather-influence corrected Special Sensor Microwave/Imager 85 GHz data, *Int. J. Remote Sens.*, 25, 4555–4582, 2004.
- Kern, S., Khvorostovsky, K., Skourup, H., Rinne, E., Parsakhoo, Z. S., Djepa, V., Wadhams, P., and Sandven, S.: The impact of snow depth, snow density and ice density on sea ice thickness retrieval from satellite radar altimetry: results from the ESA-CCI Sea Ice ECV Project Round Robin Exercise, *The Cryosphere*, 9, 37–52, doi:10.5194/tc-9-37-2015, 2015.
- Kwok, R.: Sea ice concentration estimates from satellite passive microwave radiometry and openings from SAR ice motion, *Geophys. Res. Lett.*, 29, 1311, doi:10.1029/2002GL014787, 2002.
- Kwok, R., Comiso, J. C., Martin, S., and Drucker, R.: Ross Sea polynyas: Response of ice concentration retrievals to large areas of thin ice, *J. Geophys. Res.*, 112, C12012, doi:10.1029/2006JC003967, 2007.
- Mäkynen, M. and Similä, M.: Thin Ice Detection in the Barents and Kara Seas With AMSR-E and SSMIS Radiometer Data, *IEEE T. Geosci. Remote, IEEE Early Access Articles*, doi:10.1109/TGRS.2015.2416393, 2015.
- Mäkynen, M., Kern, S., Rösel, A., and Pedersen, L. T.: On the estimation of melt pond fraction on the Arctic Sea ice with ENVISAT WSM images, *IEEE T. Geosci. Remote*, 52, 7366–7379, 2014.
- Marcq, S. and Weiss, J.: Influence of sea ice lead-width distribution on turbulent heat transfer between the ocean and the atmosphere, *The Cryosphere*, 6, 143–156, doi:10.5194/tc-6-143-2012, 2012.
- Markus, T. and Cavalieri, D. J.: An enhancement of the NASA Team sea ice algorithm, *IEEE T. Geosci. Remote*, 38, 1387–1398, 2000.
- Meier, W. and Notz, D.: A note on the accuracy and reliability of satellite-derived passive microwave estimates of sea-ice extent, CLIC Arctic sea ice working group, Consensus document, CLIC International Project Office, Tromsø, Norway, 28 October 2010.
- Meissner, T. and Wentz, F. J.: The emissivity of the ocean surface between 6–90 GHz over a large range of wind speeds and Earth incidence angles, *IEEE T. Geosci. Remote*, 50, 3004–3026, 2012.
- Naoki, K., Ukita, J., Nishio, F., Nakayama, M., Comiso, J. C., and Gasiewski, A.: Thin sea ice thickness as inferred from passive microwave and in situ observations, *J. Geophys. Res.*, 113, 2156–2202, 2008.
- Njoku, E. G.: Nimbus-7 SMMR Pathfinder Brightness Temperatures, 25 October 1978–20 August 1987, NASA DAAC at the National Snow and Ice Data Center, NASA, Boulder, Colorado, USA, 2003.
- Notz, D. and Marotzke, J.: Observations reveal external driver for Arctic sea-ice retreat, *Geophys. Res. Lett.*, 39, L08502, doi:10.1029/2012GL051094, 2012.
- NSIDC (National Snow and Ice Data Center): Monthly Ocean Masks and Maximum Extent Masks, available at: http://nsidc.org/data/smmr_ssmi_ancillary/ocean_masks.html (last access: January 2013), 1979–2007.
- Oelke, C.: Atmospheric signatures in sea ice concentration estimates from passive microwaves: modelled and observed, *Int. J. Rem. Sens.*, 18, 1113–1136, 1997.
- Parkinson, C. L. and Cavalieri, D. J.: Antarctic sea ice variability and trends, 1979–2010, *The Cryosphere*, 6, 871–880, doi:10.5194/tc-6-871-2012, 2012.
- Parkinson, C. L., Comiso, J. C., and Zwally, H. J.: Nimbus-5 ESMR Polar Gridded Sea Ice Concentrations, 1978–2011, edited by: Meier, W. and Stroeve, J., NASA DAAC at the National Snow and Ice Data Center, NASA, Boulder, Colorado, USA, 2004.
- Pedersen, L. T.: Merging microwave radiometer data and meteorological data for improved sea ice concentrations, *EARSel Adv. Remote Sens.*, 3, 81–89, 1994.
- Ramseier, R. O.: Sea ice validation, in: *DMSP Special Sensor Microwave/Imager Calibration/Validation*, edited by: Hollinger, J. P., Naval Research Laboratory, Washington, D.C., 1991.
- Röhrs, J. and Kaleschke, L.: An algorithm to detect sea ice leads by using AMSR-E passive microwave imagery, *The Cryosphere*, 6, 343–352, doi:10.5194/tc-6-343-2012, 2012.
- Röhrs, J., Kaleschke, L., Bröhan, D., and Siligam, P. K.: Corrigendum to “An algorithm to detect sea ice leads by using AMSR-E passive microwave imagery” published in *The Cryosphere*, 6, 343–352, 2012, *The Cryosphere*, 6, 365–365, doi:10.5194/tc-6-365-2012, 2012.
- Rösel, A., Kaleschke, L., and Birnbaum, G.: Melt ponds on Arctic sea ice determined from MODIS satellite data using an artificial neural network, *The Cryosphere*, 6, 431–446, doi:10.5194/tc-6-431-2012, 2012a.
- Rösel, A., Kaleschke, L., and Kern, S.: Influence of melt ponds on microwave sensor’s sea ice concentration retrieval algorithms, *Proceedings of Geoscience and Remote Sensing Symposium (IGARSS)*, 2012 IEEE International, 23–27 July 2012, Munich, 2012b.
- Scott, K. A., Buehner, M., and Carrieres, T.: An assessment of sea-ice thickness along the Labrador coast from AMSR-E and MODIS data for operational data assimilation, *IEEE T. Geosci. Remote*, 52, 2726–2737, 2014.
- Shokr, M., Lambe, A., and Agnew, T.: A new algorithm (ECICE) to estimate ice concentration from remote sensing observations: an application to 85-GHz passive microwave data, *IEEE T. Geosci. Remote*, 46, 4104–4121, 2008.
- Smith, D. M.: Extraction of winter total sea-ice concentration in the Greenland and Barents Seas from SSM/I data, *Int. J. Remote Sens.*, 17, 2625–2646, 1996.
- Svendsen, E., Kloster, K., Farrelly, B., Johannessen, O. M., Johannessen, J. A., Campbell, W. J., Gloersen, P., Cavalieri, D., and Matzler, C.: Norwegian Remote Sensing Experiment, evaluation of the Nimbus 7 scanning multichannel microwave radiometer for sea ice research, *J. Geophys. Res.*, 88, 2781–2791, 1983.
- Svendsen, E., Matzler, C., and Grenfell, Th.: A model for retrieving total sea ice concentration from a spaceborne dual-polarized passive microwave instrument operating near 90 GHz, *Int. J. Remote Sens.*, 8, 1479–1487, 1987.
- Swift, C., Fedor, L., and Ramseier, R.: An algorithm to measure sea ice concentration with microwave radiometers, *J. Geophys. Res.*, 90, 1087–1099, 1985.
- Tonboe, R. T.: The simulated sea ice thermal microwave emission at window and sounding frequencies, *Tellus A*, 62, 333–344, 2010.
- Tonboe, R. T. and Andersen, S.: Modelled radiometer algorithm ice concentration sensitivity to emissivity variations of the Arctic sea ice snow cover, Danish Meteorological Institute Scientific Report 04-03, Danish Meteorological Institute, Copenhagen, Denmark, 2004.
- Tonboe, R., Andersen, S., Toudal, L., and Heygster, G.: Sea ice emission modelling, in: *Thermal Microwave Radiation – Appli-*

- cations for Remote Sensing, edited by: Mätzler, C., Rosenkranz, P. W., Battaglia, A., and Wigneron, J. P., IET Electromagnetic Waves Series 52, London, UK, 2006.
- Tonboe, R. T., Dybkjær, G., and Høyer, J. L.: Simulations of the snow covered sea ice surface temperature and microwave effective temperature, *Tellus A*, 63, 1028–1037, 2011.
- Tschudi, M. A., Maslanik, J. A., and Perovich, D. K.: Derivation of melt pond coverage on arctic sea ice using MODIS observation, *Remote Sens. Environ.*, 112, 2605–2614, 2008.
- Ulaby, F. T., Moore, R. K., and Fung, A. K.: *Microwave Remote Sensing. Active and Passive*, Norwood, MA: Artech House Inc, 1986.
- Wentz, F. J.: A well-calibrated ocean algorithm for SSM/I, *J. Geophys. Res.*, 102, 8703–8718, 1997.
- Wentz, F. J., Ricciardulli, L., Hilburn, K. A., and Mears, C. A.: How much more rain will global warming bring?, *Science*, 317, 233–235, 2007.
- Wiesmann, A. and Mätzler, C.: Microwave emission model of layered snowpacks, *Remote Sens. Environ.*, 70, 307–316, 1999.
- Willmes, S., Nicolaus, M., and Haas, C.: The microwave emissivity variability of snow covered first-year sea ice from late winter to early summer: a model study, *The Cryosphere*, 8, 891–904, doi:10.5194/tc-8-891-2014, 2014.