

CME

# The Prognostic Value of Pre-Operative and Post-Operative B-Type Natriuretic Peptides in Patients Undergoing Noncardiac Surgery

## B-Type Natriuretic Peptide and N-Terminal Fragment of Pro-B-Type Natriuretic Peptide: A Systematic Review and Individual Patient Data Meta-Analysis

Reitze N. Rodseth, MBChB, MMED, PhD,\*†‡ Bruce M. Biccard, MBChB, MMEDSc, PhD,\*  
Yannick Le Manach, MD, PhD,†§ Daniel I. Sessler, MD,† Giovana A. Lurati Buse, MD,||  
Lehana Thabane, PhD,†¶ Robert C. Schutt, MD,# Daniel Bolliger, MD,|| Lucio Cagini, MD,\*\*  
Daniela Cardinale, MD, PhD,†† Carol P. W. Chong, MBBS, MD,‡‡ Rong Chu, MSc, PhD,§§  
Miłosław Cnotliwy, MD, PhD,||| Salvatore Di Somma, MD, PhD,¶¶ René Fahrner, MD,##  
Wen Kwang Lim, MD, MBBS,‡‡ Elisabeth Mahla, MD,\*\*\* Ramaswamy Manikandan, MD,†††  
Francesco Puma, MD,\* Wook B. Pyun, MD,‡‡‡ Milan Radović, MD, PhD,§§§ Sriram Rajagopalan, MD,||||  
Stuart Suttie, MBChB, MD,¶¶¶ Thuvvaraha Vanniyasingam, MSc,### William J. van Gaal, MBBS, MD, MSc,\*\*\*\*  
Marek Waliszek, MD, PhD,†††† P. J. Devereaux, MD, PhD†††††

*Pietermaritzburg, South Africa; Hamilton, Ontario, Canada; Cleveland, Ohio; Basel, Switzerland;  
Charlottesville, Virginia; Perugia, Milan, and Rome, Italy; Epping and Melbourne, Victoria, Australia;  
Szczecin and Lodz, Poland; Jena, Germany; Graz, Austria; Stockport, Wigan, Stoke on Trent and Dundee,  
United Kingdom; Seoul, Republic of Korea; and Belgrade, Serbia*

## JACC JOURNAL CME

This article has been selected as the month's *JACC* Journal CME activity.

### Accreditation and Designation Statement

The American College of Cardiology Foundation (ACCF) is accredited by the Accreditation Council for Continuing Medical Education (ACCME) to provide continuing medical education for physicians.

The ACCF designates this Journal-based CME activity for a maximum of 1 *AMA PRA Category 1 Credit(s)*. Physicians should only claim credit commensurate with the extent of their participation in the activity.

### Method of Participation and Receipt of CME Certificate

To obtain credit for *JACC* CME, you must:

1. Be an ACC member or *JACC* subscriber.
2. Carefully read the CME-designated article available online and in this issue of the journal.
3. Answer the post-test questions. At least 2 out of the 3 questions provided must be answered correctly to obtain CME credit.
4. Complete a brief evaluation.
5. Claim your CME credit and receive your certificate electronically by following the instructions given at the conclusion of the activity.

**CME Objective for This Article:** At the conclusion of this activity, the learner should be able to determine if measuring post-operative B-type natriuretic peptides (NP, i.e., B-type natriuretic peptide [BNP] and N-terminal fragment of proBNP [NT-proBNP]) enhances risk stratification, in adult patients undergoing noncardiac surgery, in whom a pre-operative NP has been measured.

**CME Editor Disclosure:** *JACC* CME Editor Ajit Raisinghani, MD, FACC, reports that he has no financial relationships or interests to disclose.

**Author Disclosures:** Dr. Rodseth is supported by a Canadian Institutes of Health Research Scholarship (the Canada-HOPE Scholarship), Ottawa, Canada; the College of Medicine of South Africa (the Phyllis Kocker/Bradlow Award), Cape Town, South Africa; and the University of KwaZulu-Natal (competitive research grant), Durban, South Africa. Dr. Biccard is supported by the South African Society of Anaesthesiologists (The Jan Pretorius Research Fund), Johannesburg, South Africa; and the University of KwaZulu-Natal (competitive research grant), Durban, South Africa. Dr. Chong is a recipient of a National Health and Medical Research Council (Australia postgraduate research scholarship), Canberra, Australia, and has received research stipends from The University of Melbourne, Melbourne, Australia, and the Northern Clinical Research, Melbourne, Australia. Dr. Mahla has received NT-proBNP kits from Roche Diagnostics GmbH, Mannheim,

Germany; and study grants from Novo Nordisk Pharma GmbH, Vienna, Austria, and CSL Behring Biotherapies for Life, Vienna, Austria. Dr. Radović was supported by the Ministry of Science, Belgrade, Republic of Serbia, Research Grant No. 175089. Dr. Devereaux is supported by a Heart and Stroke Foundation of Ontario Career Investigator Award, Ottawa, Canada. All other support was provided solely from institutional and/or departmental sources. Dr. Di Somma consults for Alere, San Diego, California. Dr. Mahla has received speaker honoraria and consulting fees from CLS Behring Biotherapies for Life, Vienna, Austria, Germany, and Boehringer Ingelheim RCV, GmbH & Co. KG. Dr. Devereaux has received a grant-in-kind from Roche

Diagnostics, Basel, Switzerland, to evaluate NT-proBNP and troponin T among patients undergoing noncardiac surgery. All other authors have reported that they have no relationships relevant to the contents of this paper to disclose.

**Medium of Participation:** Print (article only); online (article and quiz)

**CME Term of Approval:**

Issue date: January 21, 2014

Expiration date: January 20, 2015

---

From the \*Perioperative Research Group, Department of Anaesthetics, Grey's Hospital, Nelson R. Mandela School of Medicine, University of KwaZulu-Natal, Pietermaritzburg, South Africa; †Population Health Research Institute, Hamilton Health Sciences, Hamilton, Ontario, Canada; ‡Department of Outcomes Research, Cleveland Clinic, Cleveland, Ohio; §Departments of Anesthesia, Clinical Epidemiology, and Biostatistics, Hamilton Health Sciences, Hamilton, Ontario, Canada; ||Department of Anaesthesia and Intensive Care Medicine, University Hospital Basel, Basel, Switzerland; ¶Departments of Clinical Epidemiology and Biostatistics/Anesthesia/Pediatrics, McMaster University, Hamilton, Ontario, Canada; Biostatistics Unit, St. Joseph's Healthcare, Hamilton, Ontario, Canada; #Department of Internal Medicine, University of Virginia, Charlottesville, Virginia; \*\*Department of Surgical Science, University of Perugia, Ospedale S. Maria, Perugia, Italy; ††Cardioncology Unit, European Institute of Oncology, Milan, Italy, ‡‡Departments of Aged Care, Northern Clinical Research Centre, The Northern Hospital, Epping, Victoria, Australia, and The Department of Medicine, Austin and Northern Health, The University of Melbourne, Melbourne, Victoria, Australia; §§Department of Clinical Epidemiology and Biostatistics, Faculty of Health Sciences, McMaster University, Hamilton, Ontario, Canada; |||Department of Vascular and General Surgery and Angiology, Pomeranian Medical University, Szczecin, Poland; ¶¶Department of Medical-Surgery Sciences and Translational Medicine, University La Sapienza, and Emergency Department, Sant'Andrea Hospital, Rome, Italy; ##Division of General, Visceral and Vascular Surgery, University Hospital, Jena, Germany; \*\*\*Department of Anesthesia and Intensive Care Medicine, Medical University of Graz, Graz, Austria; †††Departments of Urology, Stepping Hill Hospital, Stockport, United Kingdom, and Wrightington, Wigan and Leigh NHS Foundation Trust, Wigan, United Kingdom; ††††Division of Cardiology, Department of Internal Medicine, Ewha Womans University, School of Medicine, Mokdong Hospital, Seoul, Korea; §§§Clinic of Nephrology, University of Belgrade, School of Medicine, Belgrade, Serbia; ||||Department of Vascular Surgery, University Hospital of North Staffordshire, Stoke on Trent, United Kingdom; ¶¶¶Department of Vascular Surgery, Ninewells Hospital and Medical School, Dundee, United Kingdom; ###Department of Mathematics and Statistics, McMaster University, Hamilton,

---

Ontario, Canada; \*\*\*\*Department of Cardiology, University of Melbourne, Northern Health, Epping, Victoria, Australia; †††††Cardiac Diagnostics Unit, M. Pirogow Provincial Specialist Hospital, Lodz, Poland; and the †††††Departments of Medicine, Clinical Epidemiology, and Biostatistics, Hamilton Health Sciences, Hamilton, Ontario, Canada. Dr. Rodseth is supported by a Canadian Institutes of Health Research Scholarship (the Canada-HOPE Scholarship), Ottawa, Canada; the College of Medicine of South Africa (the Phyllis Kocker/Bradlow Award), Cape Town, South Africa; and the University of KwaZulu-Natal (competitive research grant), Durban, South Africa. Dr. Biccard is supported by the South African Society of Anaesthesiologists (The Jan Pretorius Research Fund), Johannesburg, South Africa; and the University of KwaZulu-Natal (competitive research grant), Durban, South Africa. Dr. Chong is a recipient of a National Health and Medical Research Council (Australia postgraduate research scholarship), Canberra, Australia, and has received research stipends from The University of Melbourne, Melbourne, Australia, and the Northern Clinical Research, Melbourne, Australia. Dr. Mahla has received NT-proBNP kits from Roche Diagnostics GmbH, Mannheim, Germany; and study grants from Novo Nordisk Pharma GmbH, Vienna, Austria, and CSL Behring Biotherapies for Life, Vienna, Austria. Dr. Radović was supported by the Ministry of Science, Belgrade, Republic of Serbia, Research Grant No. 175089. Dr. Devereaux is supported by a Heart and Stroke Foundation of Ontario Career Investigator Award, Ottawa, Canada. All other support was provided solely from institutional and/or departmental sources. Dr. Di Somma consults for Alere, San Diego, California. Dr. Mahla has received speaker honoraria and consulting fees from CLS Behring Biotherapies for Life, Vienna, Austria, Germany, and Boehringer Ingelheim RCV, GmbH & Co. KG. Dr. Devereaux has received a grant-in-kind from Roche Diagnostics, Basel, Switzerland, to evaluate NT-proBNP and troponin T among patients undergoing noncardiac surgery. All other authors have reported that they have no relationships relevant to the contents of this paper to disclose.

Manuscript received May 22, 2013; revised manuscript received August 7, 2013, accepted August 12, 2013.

## The Prognostic Value of Pre-Operative and Post-Operative B-Type Natriuretic Peptides in Patients Undergoing Noncardiac Surgery

### B-Type Natriuretic Peptide and N-Terminal Fragment of Pro-B-Type Natriuretic Peptide: A Systematic Review and Individual Patient Data Meta-Analysis

---

<b>Objectives</b>	The objective of this study was to determine whether measuring post-operative B-type natriuretic peptides (NPs) (i.e., B-type natriuretic peptide [BNP] and N-terminal fragment of proBNP [NT-proBNP]) enhances risk stratification in adult patients undergoing noncardiac surgery, in whom a pre-operative NP has been measured.
<b>Background</b>	Pre-operative NP concentrations are powerful independent predictors of perioperative cardiovascular complications, but recent studies have reported that elevated post-operative NP concentrations are independently associated with these complications. It is not clear whether there is value in measuring post-operative NP when a pre-operative measurement has been done.
<b>Methods</b>	We conducted a systematic review and individual patient data meta-analysis to determine whether the addition of post-operative NP levels enhanced the prediction of the composite of death and nonfatal myocardial infarction at 30 and $\geq 180$ days after surgery.
<b>Results</b>	Eighteen eligible studies provided individual patient data ( $n = 2,179$ ). Adding post-operative NP to a risk prediction model containing pre-operative NP improved model fit and risk classification at both 30 days (corrected quasi-likelihood under the independence model criterion: 1,280 to 1,204; net reclassification index: 20%; $p < 0.001$ ) and $\geq 180$ days (corrected quasi-likelihood under the independence model criterion: 1,320 to 1,300; net reclassification index: 11%; $p = 0.003$ ). Elevated post-operative NP was the strongest independent predictor of the primary outcome at 30 days (odds ratio: 3.7; 95% confidence interval: 2.2 to 6.2; $p < 0.001$ ) and $\geq 180$ days (odds ratio: 2.2; 95% confidence interval: 1.9 to 2.7; $p < 0.001$ ) after surgery.
<b>Conclusions</b>	Additional post-operative NP measurement enhanced risk stratification for the composite outcomes of death or nonfatal myocardial infarction at 30 days and $\geq 180$ days after noncardiac surgery compared with a pre-operative NP measurement alone. (J Am Coll Cardiol 2014;63:170–80) © 2014 by the American College of Cardiology Foundation

---

Worldwide, an estimated 10 million adults annually experience significant myocardial injury after noncardiac surgery, as suggested by the post-operative peak troponin T measurement in a large ( $n = 1,513$ ) international cohort study (1). To mitigate this risk, strategies are needed that provide appropriate pre-operative medical investigation and preparation, surgical interventions (e.g., open vs. endoscopic surgery), and post-operative surveillance and management. However, the success of such interventions depends largely on the ability of clinicians to accurately identify patients at risk of cardiovascular complications.

See page 181

B-type natriuretic peptides (NPs) are released from the myocardium in response to multiple physiological stimuli, including ischemia, myocardial stretch, inflammation, and other neuroendocrine stimuli (2,3), and multiple studies have demonstrated that elevated pre-operative NP concentrations are powerful independent predictors of perioperative cardiovascular complications (i.e., mortality, myocardial infarction [MI], and heart failure) (4,5). In vascular surgical cases, pre-operative NP risk stratification outperforms traditional clinical risk stratification (6), and the European Society of Cardiology and European Society of Anesthesiology guidelines for pre-operative cardiac risk assessment have recommended that pre-

operative NP measurement be considered in high-risk noncardiac surgery cases (7).

However, recent studies have reported that elevated post-operative NP concentrations are independently associated with post-operative cardiovascular complications (8,9). In view of the improved pre-operative risk stratification provided by pre-operative NP measurement, it is not clear whether there would be any advantage to measuring post-operative NP in these patients.

We conducted a systematic review and individual patient meta-analysis to determine, in adults undergoing noncardiac surgery, whether adding post-operative NP measurements to pre-operative values enhances a clinician's ability to predict a composite of death and nonfatal MI at 30 days and  $\geq 180$  days after noncardiac surgery. The study protocol (CRD42012002683) was registered with an international prospective register of systematic reviews (PROSPERO).

#### Methods

**Systematic review methodology.** Studies were considered eligible if they measured B-type natriuretic peptide (BNP) or N-terminal fragment of proBNP (NT-proBNP) preoperatively and postoperatively (i.e.,  $< 8$  days after noncardiac surgery) on the same patient. Our primary outcome was a composite of mortality or nonfatal MI. Studies were

included regardless of language, design, sample size, publication status, or date of publication. We excluded cardiac surgery studies, pediatric studies, and studies in which NPs were used as therapy (e.g., nesiritide). Studies collecting relevant data but not reporting outcomes of interest were included if outcomes could be obtained from study authors. The methodology used for this meta-analysis is reported in [Online Appendix 1](#).

**Statistical analysis.** The baseline characteristics of the included patients are reported as mean  $\pm$  SD for continuous variables and count (percent) for categorical variables. To identify pre-operative BNP and NT-proBNP thresholds, we used the approach described by Mazumdar and Glassman (10) to identify the values corresponding to the smallest p values that are associated with a statistically significant association between the outcome of mortality and nonfatal MI at 30 days after surgery. To categorize post-operative NP, we used thresholds previously identified as predicting mortality or nonfatal MI 30 days after surgery (i.e., BNP  $\geq$ 245 ng/l and NT-proBNP  $\geq$ 718 ng/l) (9). Patients with a measurement below these thresholds were classified as low risk. Patients with a measurement greater than or equal to these thresholds were classified as high risk. BNP and NT-proBNP data sets were then merged and used for further analyses. NP measurements obtained using fluoroimmunoassay methods may differ from those obtained using radioimmunoassay methods and may affect the homogeneity of the results (11,12). We therefore assessed the heterogeneity between BNP and NT-proBNP studies for the outcome of 30-day mortality or nonfatal MI.

In addition, we explored pre-operative NP using thresholds previously identified in patients with cardiac failure (i.e., BNP  $<$ 100 and 250 ng/l; NT-proBNP  $<$ 300, 300 to 900, 900 to 3,000, and  $>$ 3,000 ng/l) to determine whether they separated patients into clinically useful risk groups for the primary outcome (13–16). The thresholds were explored for the entire cohort of patients and in vascular and nonvascular groups of patients.

To identify independent predictors of the primary outcome at 30 days and  $\geq$ 180 days after surgery, we used generalized estimating equations with an exchangeable correlation structure to take into account study clustering (17). The baseline model included the following variables: age, Revised Cardiac Risk Index (RCRI) score  $\geq$ 3, type of surgery (vascular vs. nonvascular), urgency of surgery (urgent/emergent vs. elective), and study as a clustering variable. We assessed collinearity using the variance inflation factor. Variables with a variance inflation factor  $>$ 10 were considered to be collinear, and we then excluded one of these variables from the analysis.

We evaluated pre-operative NP by adding pre-operative NP measurement to the baseline model to create a pre-operative NP model. The variables in this model included age, RCRI score  $\geq$ 3, type of surgery (vascular vs. nonvascular), urgency of surgery (urgent/emergent vs. elective), and pre-operative NP. We evaluated post-operative NP by adding a post-operative NP measurement to the pre-operative NP model.

We used the corrected quasi-likelihood under the independence model criterion (QICu) statistic to compare all model fits (18). The model with the lowest QICu was considered preferable. We used reclassification statistics (net reclassification index [NRI]) to evaluate how the addition of NP variables to the baseline model changed risk classification (19). On the basis of the NP measurement, patients were reclassified into different risk categories. The NRI provides a summary statistic describing this change in risk classification, where a positive NRI reflects an improvement in risk stratification and a negative NRI reflects a worsening in risk stratification. For NRI analyses, patients were risk stratified as  $<$ 5%, 5% to 10%,  $>$ 10% to 15%, and  $>$ 15% risk for the primary outcome at 30 days after surgery (1). To determine the influence of post-operative NP drawn later than 1 day after surgery, we conducted a sensitivity analysis by excluding such studies and repeating these analyses.

For both BNP and NT-proBNP data sets, we evaluated the NP change, from pre-operative to post-operative, to determine whether this added additional prognostic information for the prediction of the primary outcome at 30 days after surgery. The change variables evaluated were (1) absolute NP change (i.e., post-operative NP – pre-operative NP); (2) absolute change in the log transformed NP value (i.e.,  $\log[\text{post-operative NP}] - \log[\text{pre-operative NP}]$ ); (3) fractional change  $\left(\frac{\text{post-operative NP} - \text{pre-operative NP}}{\text{pre-operative NP}}\right)$ ; and (4) log fractional change  $\left(\frac{\log(\text{post-operative NP}) - \log(\text{pre-operative NP})}{\log(\text{pre-operative NP})}\right)$ . These four change variables were each evaluated separately in a model containing the pre-operative and post-operative NP threshold variables.

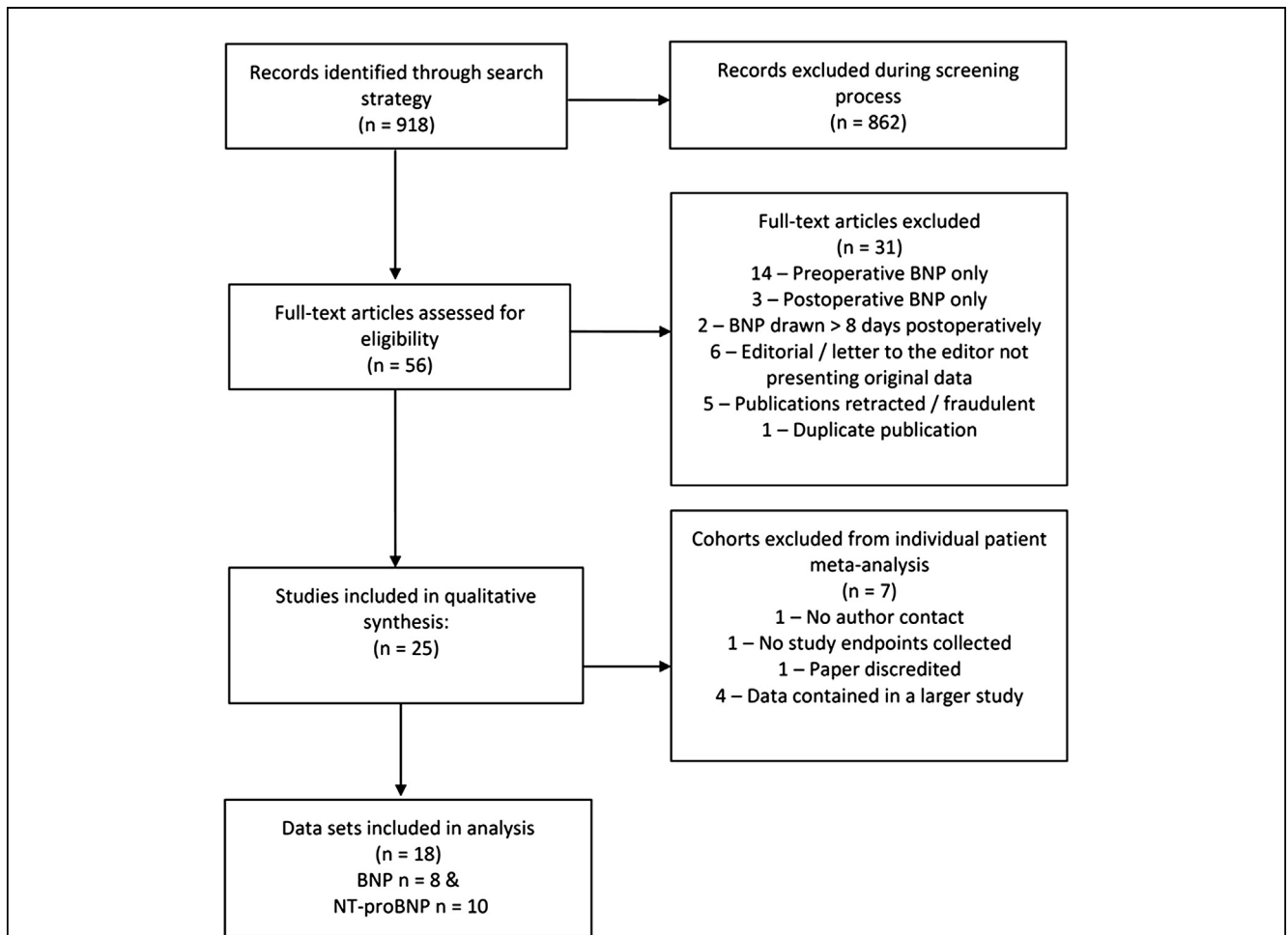
We report adjusted odd ratios, corresponding 95% confidence interval (CI), and associated p values. All p values are reported to 3 decimal places. The criterion for statistical significance was set a priori at  $\alpha = 0.05$ . We used IBM SPSS Statistics 21.0 (Chicago, Illinois) for all analyses except for the derivation of the NP thresholds, for which we used R software version 2.14.1 (R Foundation for Statistical Computing, Vienna, Austria).

## Results

**Study identification and selection.** The study selection process is shown in [Figure 1](#). We identified 918 citations, from which 56 were selected for full-text evaluation. From

### Abbreviations and Acronyms

<b>AUC</b>	= area under the curve
<b>BNP</b>	= B-type natriuretic peptide
<b>CI</b>	= confidence interval
<b>IQR</b>	= interquartile range
<b>MI</b>	= myocardial infarction
<b>NP</b>	= natriuretic peptide
<b>NRI</b>	= net reclassification index
<b>NT-proBNP</b>	= N-terminal fragment of B-type natriuretic peptide
<b>OR</b>	= odds ratio
<b>QICu</b>	= corrected quasi-likelihood under the independence model criterion
<b>RCRI</b>	= Revised Cardiac Risk Index
<b>ROC</b>	= receiver operating characteristic



**Figure 1** Study Selection Process

Flow chart demonstrating the results of a structured electronic database search of six databases and grey literature conducted to identify studies reporting on the association of pre- and post-operative B-type natriuretic peptide (NP) concentrations and post-operative cardiovascular events in adults undergoing noncardiac surgery. BNP = B-type natriuretic peptide; NT-proBNP = N-terminal fragment of proB-type natriuretic peptide.

these, we identified 25 eligible citations (8,20–43). Seven of these studies were not included in the analysis: Data from 4 papers were included in larger subsequent publications that we included (29,40–42); one study did not collect data on death or nonfatal MI (32); we were unable to contact the authors of one study (28); and one study has been discredited and was therefore not included (Erasmus Investigational Committee, 2012) (26). Individual patient data were received from all remaining 18 studies and are included in this systematic review (8,20–25,27,30,31,33–39,43). Interobserver agreement for study eligibility was excellent ( $\kappa = 0.86$ ).

**Study characteristics and data collection.** The characteristics of the 18 studies included in this systematic review are reported in Table 1. All studies were prospective observational cohort studies. Their sample sizes ranged from 22 to 400 patients and included 4 mixed or major general surgery studies ( $n = 745$ ); 3 orthopedic studies ( $n = 309$ );

3 thoracic studies ( $n = 471$ ); 2 urological studies ( $n = 77$ ); and 6 vascular studies ( $n = 688$ ). All studies measured post-operative NP within the first day after surgery except for the studies by Mahla et al. (8) (measured 3 to 5 days after surgery) and Waliszek et al. (43) (measured 7 days after surgery) (43). Study quality is reported in Table 2. Data collection and outcome assessment were blinded in 17 of the 18 studies, and all used a consistent outcome definition over the course of the study. Fourteen studies conducted surveillance for post-operative MI by measuring post-operative troponins.

Data were received on 2,477 patients from 18 studies. We excluded 298 patients, across all studies, who did not have both a pre-operative and post-operative NP measurement. A total of 2,179 patients were included; 8 studies evaluated BNP ( $n = 619$ ), and 10 studies evaluated NT-proBNP ( $n = 1,560$ ). A post-operative sample was drawn within the first day after surgery from 88% of these



**Table 1** Characteristics of Included Studies

First Author, Year (Ref. #)	Patient Population, Type of Surgery	No. of Patients	Age of Study Patients, mean ± SD	Type of Natriuretic Peptide	Assay, Manufacturer	Timing and Frequency of Samples	Length of Follow-up (Days)
Manikandan et al., 2005 (31)	Elective, urological	52	72 ± 9.0	NT-proBNP	Elecsys ProBNP, Roche Diagnostics (Indianapolis, Indiana)	Pre-operative; post-operative: day 1	30
Cardinale et al., 2007 (21)	Elective, thoracic	400	62 ± 9.9	NT-proBNP	Elecsys ProBNP, Roche Diagnostics	Pre-operative; post-operative: 1 h after surgery	In-hospital
Hoksch et al., 2007 (27)	Elective, thoracic	22	67 ± 11.1	BNP	Triage BNP-Test, Biosite Diagnostic (San Diego, California)	Pre-operative; post-operative: days 1-5	270
Mahla et al., 2007 (8)	Elective, major vascular	218	70 ± 9.3	NT-proBNP	Elecsys ProBNP, Roche Diagnostics	Pre-operative; post-operative: days 3-5	826
Schutt et al., 2009 (38)	Elective and urgent/emergent, mixed (60% orthopedic)	75	69 ± 11.0	NT-proBNP	Elecsys ProBNP, Roche Diagnostics	Pre-operative; post-operative: days 1-3	30
Chong et al., 2010 (23)	Urgent/emergent, orthopedic	33	86 ± 9.7	NT-proBNP	Elecsys ProBNP, Roche Diagnostics	Pre-operative; post-operative: days 1-3	180
Chong et al., 2010 (22)	Urgent/emergent, orthopedic	89	80 ± 9.9	NT-proBNP	Elecsys ProBNP, Roche Diagnostics	Pre-operative; post-operative: days 1-3	730
Cagini et al., 2011 (20)	Elective, thoracic	149	66 ± 12.5	BNP	Triage BNP, Biosite Diagnostic	Pre-operative; post-operative: days 1,3 and 7	360
Cnotliwy et al., 2011 (25)	Elective, vascular	100	69 ± 8.5	NT-proBNP	Elecsys ProBNP, Roche Diagnostics	Pre-operative; post-operative: day 1	30
Radović et al., 2011 (35)	Elective, urological	25	56 ± 8.0	BNP	BNP 2, IRMA, CIS bio Internationale, Gif-Sur-yvette Cedex, France	Pre-operative; post-operative: days 1 and 7	180
Rajagopalan et al., 2011 (36)	Elective, major vascular	136	69 ± 9.7	NT-proBNP	Elecsys ProBNP, Roche Diagnostics	Pre-operative; post-operative: day 1	654
Suttie et al., 2011 (39)	Elective, major vascular	45	72 ± 10.4	BNP	BNP, Peninsula Laboratories, Merseyside, United Kingdom	Pre-operative; post-operative: immediately after surgery, and days 1-4	365
Wallszek et al., 2011 (43)	Elective, vascular	40	63.1 ± 10.6	NT-proBNP	Elecsys ProBNP, Roche Diagnostics	Pre-operative; post-operative: day 7	7
Lurati Buse et al., 2012 (30)	Elective, mixed (58% vascular)	380	72 ± 7.9	NT-proBNP	Elecsys ProBNP, Roche Diagnostics	Pre-operative; post-operative: day 1 and 2	365
Mercantini et al., 2012 (33)	Elective, general and orthopedic	205	64 ± 16.3	BNP	Triage BNP, Biosite Diagnostic	Pre-operative; post-operative: day 1	30
Chong et al., 2012 (24)	Emergency, orthopedic	187	77 ± 9.3	NT-proBNP	Elecsys ProBNP, Roche Diagnostics	Pre-operative; post-operative: days 1-3	365
Park et al., 2012 (34)	Elective, mixed (46% orthopedic)	85	69 ± 14.8	BNP	Advia Centaur Xp, Siemens (Bayer), Leverkusen, Germany	Pre-operative; post-operative: day 1	30
Rodseth et al., 2012 (37)	Elective, vascular	149	59 ± 12.2	BNP	Advia Centaur Xp, Siemens (Bayer)	Pre-operative; post-operative: day 1	30

BNP = B-type natriuretic peptide; IRMA = immunoradiometric assay; NT-proBNP = N-terminal fragment of pro B-type natriuretic peptide.

**Table 2 Study Quality Characteristics**

First Author, Year (Ref. #)	Data Collection Blinded to NP Value	Outcome Assessment Blinded to NP	Consistent Outcome Definition	Diagnostic Troponin Threshold Used During Post-Operative Screening	MI Criteria
Manikandan et al., 2005 (31)	Blinded	Blinded	Yes	4th-generation troponin T ( $\geq 0.03$ ng/ml)	Elevated troponin, and $\geq 1$ or more of ECG changes or anginal symptoms
Cardinale et al. 2007 (21)	Blinded	Blinded	Yes	No screening performed	Not a predefined study end point
Hoksch et al., 2007 (27)	Blinded	Blinded	Yes	No screening performed	Not a predefined study end point
Mahla et al., 2007 (8)	Blinded	Blinded	Yes	4th-generation troponin T ( $\geq 0.03$ ng/ml)	Elevated troponin and ECG changes indicative of ischemia
Schutt et al., 2009 (38)	Blinded	Blinded	Yes	4th-generation troponin T ( $\geq 0.03$ ng/ml)	Elevated troponin, and $\geq 1$ of ECG changes or anginal symptoms
Chong et al., 2010 (20)	Blinded	Blinded	Yes	Troponin I ( $\geq 0.03$ ng/ml)	Universal definition of MI
Chong et al., 2010 (23)	Blinded	Blinded	Yes	Troponin I ( $\geq 0.03$ ng/ml)	Universal definition of MI
Cagnini et al., 2011 (20)	Blinded	Blinded	Yes	No screening performed	Not a predefined study end point
Cnotliwy et al., 2011 (25)	Blinded	Unblinded	Yes	Troponin I ( $\geq 0.01$ ng/ml)	Universal definition of MI
Radović et al., 2011 (35)	Blinded	Blinded	Yes	No screening performed	Not a predefined study end point
Rajagopalan et al., 2011 (36)	Blinded	Blinded	Yes	Troponin-I ( $\geq 0.1$ ng/ml)	Elevated troponin only
Suttie et al., 2011 (39)	Blinded	Blinded	Yes	Troponin T ( $\geq 0.01$ ng/ml)	Elevated troponin, and $\geq 1$ of ECG changes or anginal symptoms
Waliszek et al., 2011 (43)	Blinded	Blinded	Yes	Troponin I ( $\geq 0.3$ ng/ml)	Elevated troponin, and $\geq 1$ of ECG changes or anginal symptoms
Lurati Buse et al., 2012 (30)	Blinded	Blinded	Yes	2006-2009: 4th-generation troponin T ( $\geq 0.03$ ng/ml) 2010 onward: 5th-generation troponin T ( $\geq 0.013$ ng/ml)	Elevated troponin only
Mercantini et al., 2012 (33)	Blinded	Blinded	Yes	4th-generation troponin T ( $\geq 0.03$ ng/ml)	Elevated troponin, and $\geq 1$ of ECG changes or anginal symptoms
Chong et al., 2012 (24)	Blinded	Blinded	Yes	Troponin I ( $\geq 0.03$ ng/ml)	Universal definition of MI
Park et al., 2012 (34)	Blinded	Blinded	Yes	Troponin T ( $\geq 0.01$ ng/ml)	Elevated troponin and ECG changes indicative of ischemia
Rodseth et al., 2012 (37)	Blinded	Blinded	Yes	Troponin I ( $\geq 0.1$ ng/ml)	Elevated troponin only

ECG = electrocardiogram; MI = myocardial infarction; NP = natriuretic peptide.

patients (1,921 of 2,179) and within the first 3 days after surgery in 98% of patients (2,139 of 2,179). The mean (SD) age was 68 (12) years. Sixty-five percent of patients were male, 31% of patients had a history of coronary artery disease, and the most commonly performed surgery was vascular (40% of the sample). [Online Appendix 2](#) shows the characteristics of all 2,179 patients. This is subdivided into the patients who did and did not die or have nonfatal MI at 30 days after surgery.

**Study outcome and determination of pre-operative NP cut-points.** Within 30 days of surgery, 2.8% of patients had died (n = 62 of 2,179) and 10.8% had died or experienced nonfatal MI (n = 235 of 2,179). At  $\geq 180$  days, 8.4% of patients had died (n = 182 of 1,605) and 16.8% had died or experienced nonfatal MI (n = 366 of 1,617).

The pre-operative NP threshold associated with the lowest p value for the outcome of death and nonfatal MI at 30 days after surgery was 92 ng/l (95% CI: 38 to 133) for BNP (receiver operating characteristic [ROC] area under the curve [AUC]: 0.71; 95% CI: 0.63 to 0.78) and 300 ng/l (95% CI: 240 to 540) for NT-proBNP (ROC AUC: 0.69; 95% CI: 0.65 to 0.73). For the merged data set, the ROC AUC was 0.70 (95% CI: 0.66 to 0.74). There was no heterogeneity between the BNP or the NT-proBNP studies for the outcome of 30-day death

and nonfatal MI (I<sup>2</sup> = 0) despite two (35,39) of the eight BNP studies having used a radioimmunoassay method.

Death or nonfatal MI at 30 days after surgery occurred in 21.8% of patients with a pre-operative NP measurement above the threshold (n = 166 of 763; likelihood ratio: 2.3) compared with 4.9% in patients with a measurement below the threshold (n = 69 of 1,416; likelihood ratio: 0.42). An elevated pre-operative NP (odds ratio [OR]: 3.40; 95% CI: 2.57 to 4.47; p < 0.001), RCRI  $\geq 3$  (OR: 2.7; 95% CI: 1.81 to 3.96; p < 0.001), and urgent/emergency surgery (OR: 1.60; 95% CI: 0.75 to 3.53; p = 0.216) all predicted death or nonfatal MI at 30 days ([Online Appendix 3](#)).

Death or nonfatal MI at  $\geq 180$  days after surgery occurred in 37% of patients with a pre-operative NP measurement above the threshold (n = 235 of 635; likelihood ratio: 2.0) compared with 13.3% in patients with a measurement below the threshold (n = 131 of 982; likelihood ratio: 0.53). As shown in [Online Appendix 3](#), an elevated pre-operative NP measurement was the strongest predictor of death or nonfatal MI at  $\geq 180$  days with an OR of 2.6 (95% CI: 2.0 to 3.43; p < 0.001).

**Risk prediction improvement with the addition of NP.** Adding a pre-operative NP measurement to the baseline model improved model fit and risk classification for the

**Table 3** Change in Risk Classification for the Probability of Mortality or Nonfatal MI at 30 Days Using a Model Including Pre-Operative NP Compared With a Model Using Baseline Factors Only

Risk Classification Using Baseline Factors	Risk Classification Using Baseline and Pre-Operative NP				Reclassified <sup>†</sup> as		Net Correctly Reclassified <sup>‡</sup> %	Net Reclassification Improvement <sup>§</sup> %
	<5%	5%–10%	>10%–15%	>15%	Higher Risk	Lower Risk		
<b>Patients With Primary Outcome*</b>								
<5%	12	8	0	0				
5%–10%	29	7	32	8	91	53	16.2%	
>10%–15%	2	15	14	43				
>15%	0	4	3	58				31.6%
<b>Patients Without Primary Outcome*</b>								
<5%	676	61	0	0				
5%–10%	425	77	159	15	342	641	15.4%	
>10%–15%	33	126	49	107				
>15%	0	44	13	159				

**Key**  
■ Improved classification  
■ No classification change  
■ Worse classification

\*Primary outcome = composite of mortality of nonfatal MI at 30 days after surgery. <sup>†</sup>The addition of NP to the baseline risk model reclassified 91 patients with the primary outcome and 342 patients without the primary outcome to a higher-risk category, and 53 patients with the primary outcome and 641 patients without the primary outcome to a lower-risk category. <sup>‡</sup>In patients with the primary outcome, 16.2% were correctly reclassified ([91–53]/235). In patients without the primary outcome, 15.4% were correctly reclassified ([641–342]/1,944). <sup>§</sup>The net reclassification improvement is the sum of the correctly reclassified patients who did and did not survive (i.e., 16.2% + 15.4% = 31.6%).  
MI = myocardial infarction; NP = natriuretic peptide.

prediction of the primary outcome at 30 days (QICu: 1,352.95 to 1,280.16; NRI: 32%;  $p < 0.001$ ) and  $\geq 180$  days (QICu: 1,376 to 1,320.42; NRI: 18%;  $p < 0.001$ ) after surgery (Table 3). Adding a post-operative NP measurement to the pre-operative NP model further improved model fit and risk classification at both 30 days (QICu: 1,280.16 to

1,204.06; NRI: 20%;  $p < 0.001$ ) and  $\geq 180$  days (QICu: 1,320.42 to 1,300.09; NRI: 11%;  $p = 0.003$ ) (Table 4). The results of the sensitivity analysis that excluded the two studies measuring post-operative NP after the first post-operative day did not differ appreciably from the primary results (Online Appendix 4).

**Table 4** Change in Risk Classification for the Probability of Mortality or Nonfatal MI at 30 Days Using a Model Including Pre- and Post-operative NP Compared With Baseline and Pre-Operative NP Model Only

Risk Classification Using Baseline Factors and Preoperative NP	Risk Classification Using Baseline, With Pre- and Post-Operative NP				Reclassified <sup>†</sup> as		Net Correctly Reclassified <sup>‡</sup> %	Net Reclassification Improvement <sup>§</sup> %
	<5%	5%–10%	>10%–15%	>15%	Higher Risk	Lower Risk		
<b>Patients With Primary Outcome*</b>								
<5%	30	9	4	0				
5%–10%	7	8	4	15	74	28	19.6%	
>10%–15%	0	7	0	42				
>15%	0	9	5	95				20.2%
<b>Patients Without Primary Outcome*</b>								
<5%	1,033	46	55	0				
5%–10%	139	87	33	49	305	316	0.6%	
>10%–15%	6	92	1	122				
>15%	0	70	15	196				

**Key**  
■ Improved classification  
■ No classification change  
■ Worse classification

\*Primary outcome = composite of mortality of nonfatal MI at 30 days after surgery. <sup>†</sup>The addition of NP to the baseline risk model reclassified 74 patients with the primary outcome and 305 patients without the primary outcome to a higher-risk category, and 28 patients with the primary outcome and 316 patients without the primary outcome to a lower-risk category. <sup>‡</sup>In patients with the primary outcome, 19.6% were correctly reclassified ([74–28]/235). In patients without the primary outcome, 0.6% were correctly reclassified ([316–305]/1,944). <sup>§</sup>The net reclassification improvement is the sum of the correctly reclassified patients who did and did not survive (i.e., 19.6% + 0.6% = 20.2%).  
MI = myocardial infarction; NP = natriuretic peptide.



**Table 5** Variables Evaluated in the Final Generalized Estimating Equation Model for an Association With the Composite Outcome of Mortality or Nonfatal MI After Surgery

Outcome	Variable	Adjusted OR (95% CI)	p Value
Death or nonfatal MI 30 days after surgery	Post-operative elevated NP	3.70 (2.18-6.24)	<0.001*
	RCRI $\geq 3$	2.30 (1.59-3.19)	<0.001*
	Pre-operative elevated NP	1.90 (1.44-2.40)	<0.001*
	Urgent/emergent surgery	1.40 (0.72-2.64)	0.337
	Vascular surgery	1.30 (0.63-2.62)	0.484
	Age (per year)	1.00 (0.99-1.03)	0.096
Death or nonfatal MI $\geq 180$ days after surgery	Post-operative elevated NP	2.20 (1.85-2.65)	<0.001*
	RCRI $\geq 3$	2.10 (1.87-2.52)	<0.001*
	Pre-operative elevated NP	1.90 (1.38-2.58)	<0.001*
	Age (per year)	1.01 (1.00-1.02)	0.016*
	Vascular surgery	1.40 (0.77-2.47)	0.590
	Urgent/emergent surgery	0.60 (0.22-1.86)	0.545

\*p &lt; 0.05.

CI = confidence interval; GEE = generalized estimating equation; MI = myocardial infarction; NP = natriuretic peptide; OR = odds ratio; RCRI = Revised Cardiac Risk Index.

In the final model, independent predictors for the study outcome at 30 days were elevated post-operative NP (OR: 3.70; 95% CI: 2.18 to 6.24;  $p < 0.001$ ), RCRI  $\geq 3$  (OR: 2.30; 95% CI: 1.59 to 3.19;  $p < 0.001$ ), and elevated pre-operative NP (OR: 1.90; 95% CI: 1.44 to 2.40;  $p < 0.001$ ). At  $\geq 180$  days, the independent predictors were elevated post-operative NP (OR: 2.20; 95% CI: 1.85 to 2.65;  $p < 0.001$ ), RCRI  $\geq 3$  (OR: 2.20; 95% CI: 1.87 to 2.52;  $p < 0.001$ ), elevated pre-operative NP (OR: 1.90; 95% CI: 1.38 to 2.58;  $p < 0.001$ ), and age (OR: 1.01; 95% CI: 1.00 to 1.02;  $p = 0.016$ ). These results are reported in [Table 5](#). We identified no significant collinearity between variables.

**NP change.** After surgery, NP measurements increased in 76% of patients ( $n = 1,653$ ), with a median BNP increase of 66 ng/l (interquartile range [IQR]: 123 ng/l) and an NT-proBNP increase of 323 ng/l (IQR: 874 ng/l). NP decreased in 23% of patients ( $n = 507$ ), with a median BNP decrease of 15 ng/l (IQR: 64 ng/l) and an NT-proBNP decrease of 53 ng/l (IQR: 153 ng/l). In both BNP and NT-proBNP data sets, the four change variables were each separately evaluated in a generalized estimating equation model containing the derived pre- and post-operative NP thresholds. In both data sets, none of the change variables were significant predictors of the primary study outcome at 30 days after surgery ([Online Appendix 5](#)).

Our exploration of traditional NP thresholds found that patients with pre-operative BNP values of 0 to 100, >100 to 250, and >250 ng/l demonstrated the composite of 30-day mortality or nonfatal MI at a rate of 5.1%, 11.6%, and 26.3%, respectively. Patients with pre-operative NT-proBNP values of 0 to 300, >300 to 900, >900 to 3,000, and >3,000 ng/l demonstrated the same outcome at a rate of 5.2%, 16.1%, 26%, and 39.5%, respectively. These BNP and NT-proBNP results, together with the breakdown for vascular and nonvascular surgery groups of patients, are shown in [Online Appendix 6](#).

## Discussion

This systematic review and individual patient-level data analysis demonstrate that adding a post-operative NP measurement to a pre-operative risk model that included pre-operative NP measurement improved the prediction of mortality or nonfatal MI at 30 or  $\geq 180$  days after noncardiac surgery.

The potential for NP measurement in pre-operative risk stratification lies in its ability to integrate the impact of multiple pre-operative pathophysiological processes into a single measurement (2,3). Previous meta-analyses suggest that a single elevated pre-operative NP measurement is highly predictive of serious cardiovascular complications after noncardiac surgery and may be a better predictor of these events than the RCRI (4,5). Measuring NP in adults undergoing major noncardiac surgery thus significantly improves pre-operative risk stratification and could easily be incorporated into clinical practice, particularly in patients undergoing major vascular, intrathoracic, orthopedic, or intraperitoneal surgery, and would allow physicians to plan prophylactic strategies in patients identified as high risk.

In our analysis, a post-operative NP measurement was the strongest predictor of mortality or nonfatal MI after noncardiac surgery, and the addition of a post-operative NP measurement augmented the identification of at-risk patients. Post-operative NP elevations might identify patients who will develop major cardiovascular complications, allowing physicians to intervene by administering beta-blockers, aspirin, or statins. However, further studies are required to ascertain whether interventions in response to NP measurements will improve patient outcomes. What remains unclear, and what could not be determined from this analysis, is the extent to which post-operative NP elevation correlates with post-operative troponin elevation.

NP elevation may precede troponin elevation, for example, when the patient is fluid overloaded and in cardiac failure, or NP elevation may occur together with troponin elevation when the myocardium is exposed to ischemia. In such cases, it remains unclear whether measuring NP provides additional information to that provided by post-operative troponin alone (1,44).

The strengths of this review lie in its rigorous methodology that includes a published review protocol, an extensive literature search, and adherence to reporting standards for systematic reviews. A particular strength is our success in obtaining individual-level patient data on 2,179 patients. Further, our analysis has accounted for the clustering effect of the contributing studies, and we surpassed 10 events per variable in all our regression models, thus ensuring stable measures of association (45).

**Study limitations.** A limitation of this analysis is that post-operative NP sampling was not performed at the same time point in all studies. More than 90% of patients included in the primary analysis had NP drawn within the first day after surgery, and 98% within the first 3 days after surgery. The results of the sensitivity analysis conducted using only studies where NP sampling was performed within the first day of surgery were not appreciably different from the primary analysis. Therefore, it is likely that these results are representative of what can be expected by sampling NP early after surgery. No other post-operative variables besides NP could be evaluated in this analysis, and as a result we are unable to adjust for factors such as post-operative renal dysfunction, which is known to elevate NP. Two BNP studies used radioimmunoassay analysis methods (35,39), and the remaining six BNP studies used fluoroimmunoassay (20,27,31,33,34,37). Although our analysis found no heterogeneity between the BNP studies for the primary outcome, our choice to pool BNP concentrations obtained from diverse assays with varying degrees of precision (11,12) should be seen as a limitation.

Four studies (n = 496) did not conduct routine post-operative troponin surveillance (20,21,27,35); thus, it is possible that the incidence of post-operative MI may be higher than what we have reported. Most post-operative troponin elevations occur within the first 48 to 72 h after surgery (46). Although 88% of post-operative NP measurements were made within the first day after surgery, we are unable to determine the exact relationship between post-operative NP elevation and post-operative troponin elevation. All studies used an elevated troponin as part of their definition of post-operative MI, with two studies making the diagnosis on the basis of troponin elevation alone (30,37).

## Conclusions

The addition of a post-operative NP measurement to a pre-operative risk model that includes pre-operative NP measurement significantly improves the prediction of the

composite outcome of mortality or nonfatal MI within 30 days or  $\geq 180$  days after noncardiac surgery.

## Acknowledgments

The authors thank Drs. Verhagen and Hoeks, Erasmus University Medical Center; Dr. Jan Brozekj, Departments of Clinical Epidemiology and Biostatistics and Medicine, McMaster University; and Dr. David McDonagh, Department of Anesthesiology, Duke University Medical Center.

**Reprint requests and correspondence:** Dr. Reitze N. Rodseth, Department of Anaesthetics, Nelson R. Mandela School of Medicine, University of KwaZulu-Natal, Private Bag 7, Congella, 4013, South Africa. E-mail: [ReitzeRodseth@gmail.com](mailto:ReitzeRodseth@gmail.com).

## REFERENCES

1. Devereaux PJ, Chan MT, Alonso-Coello P, et al. Association between postoperative troponin levels and 30-day mortality among patients undergoing noncardiac surgery. *JAMA* 2012;307:2295–304.
2. Struthers A, Lang C. The potential to improve primary prevention in the future by using BNP/N-BNP as an indicator of silent ‘pancardiac’ target organ damage: BNP/N-BNP could become for the heart what microalbuminuria is for the kidney. *Eur Heart J* 2007;28:1678–82.
3. Clerico A, Giannoni A, Vittorini S, Passino C. Thirty years of the heart as an endocrine organ: physiological role and clinical utility of cardiac natriuretic hormones. *Am J Physiol Heart Circ Physiol* 2011;301:H12–20.
4. Rodseth RN, Lurati Buse GA, Bolliger D, et al. The predictive ability of pre-operative B-type natriuretic peptide in vascular patients for major adverse cardiac events: an individual patient data meta-analysis. *J Am Coll Cardiol* 2011;58:522–9.
5. Karthikeyan G, Moncur RA, Levine O, Heels-Ansdell D, Chan MT, Alonso-Coello P, et al. Is a pre-operative brain natriuretic peptide or N-terminal pro-B-type natriuretic peptide measurement an independent predictor of adverse cardiovascular outcomes within 30 days of noncardiac surgery? A systematic review and meta-analysis of observational studies. *J Am Coll Cardiol* 2009;54:1599–606.
6. Biccard BM, Lurati Buse GA, Burkhart C, Cuthbertson BH, Filipovic M, Gibson SC, et al. The influence of clinical risk factors on pre-operative B-type natriuretic peptide risk stratification of vascular surgical patients. *Anaesthesia* 2012;67:55–9.
7. Poldermans D, Bax JJ, Boersma E, et al. Guidelines for pre-operative cardiac risk assessment and perioperative cardiac management in non-cardiac surgery. *Eur Heart J* 2009;30:2769–812.
8. Mahla E, Baumann A, Rehak P, et al. N-terminal pro-brain natriuretic peptide identifies patients at high risk for adverse cardiac outcome after vascular surgery. *Anesthesiology* 2007;106:1088–95.
9. Rodseth RN, Biccard BM, Le Manach Y, et al. Postoperative B-type natriuretic peptide for prediction of major cardiac events in patients undergoing noncardiac surgery – systematic review and individual patient meta-analysis. *Anesthesiology* 2013;119:270–83.
10. Mazumdar M, Glassman JR. Categorizing a prognostic variable: review of methods, code for easy implementation and applications to decision-making about cancer treatments. *Stat Med* 2000;19:113–32.
11. Clerico A, Zucchelli GC, Pilo A, Emdin M. Clinical relevance of biological variation of B-type natriuretic peptide. *Clin Chem* 2005;51:925–6.
12. Clerico A, Zaninotto M, Prontera C, et al. State of the art of BNP and NT-proBNP immunoassays: the CardioOrmoCheck study. *Clin Chim Acta* 2012;414:112–9.
13. Rodseth RN. B type natriuretic peptide—a diagnostic breakthrough in peri-operative cardiac risk assessment? *Anaesthesia* 2009;64:165–78.
14. Maisel AS, Krishnaswamy P, Nowak RM, et al. Rapid measurement of B-type natriuretic peptide in the emergency diagnosis of heart failure. *N Engl J Med* 2002;347:161–7.

15. Korenstein D, Wisnivesky JP, Wyer P, Adler R, Ponieman D, McGinn T, et al. The utility of B-type natriuretic peptide in the diagnosis of heart failure in the emergency department: a systematic review. *BMC Emerg Med* 2007;7:6.
16. Januzzi JL Jr., Chen-Tournoux AA, Moe G. Amino-terminal pro-B-type natriuretic peptide testing for the diagnosis or exclusion of heart failure in patients with acute symptoms. *Am J Cardiol* 2008;101:29–38.
17. Hardin JW, Hilbe J. *Generalized Estimating Equations*. Boca Raton, FL: Chapman & Hall/CRC, 2003.
18. Pan W. Akaike's information criterion in generalized estimating equations. *Biometrics* 2001;57:120–5.
19. Pencina MJ, D'Agostino RB Sr., Steyerberg EW. Extensions of net reclassification improvement calculations to measure usefulness of new biomarkers. *Stat Med* 2011;30:11–21.
20. Cagini L, Capozzi R, Tassi V, et al. Fluid and electrolyte balance after major thoracic surgery by bioimpedance and endocrine evaluation. *Eur J Cardiothorac Surg* 2011;40:e71–6.
21. Cardinale D, Colombo A, Sandri MT, et al. Increased perioperative N-terminal pro-B-type natriuretic peptide levels predict atrial fibrillation after thoracic surgery for lung cancer. *Circulation* 2007;115:1339–44.
22. Chong CP, Ryan JE, Van Gaal WJ, et al. Usefulness of N-terminal pro-brain natriuretic peptide to predict postoperative cardiac complications and long-term mortality after emergency lower limb orthopedic surgery. *Am J Cardiol* 2010;106:865–72.
23. Chong CP, van Gaal WJ, Ryan JE, Burrell LM, Savige J, Lim WK. Troponin I and NT-proBNP (N-terminal pro-brain natriuretic peptide) do not predict 6-month mortality in frail older patients undergoing orthopedic surgery. *J Am Med Dir Assoc* 2010;11:415–20.
24. Chong CP, Lim WK, Velkoska E, van Gaal WJ, Ryan JE, Savige J, et al. N-terminal pro-brain natriuretic peptide and angiotensin-converting enzyme-2 levels and their association with postoperative cardiac complications after emergency orthopedic surgery. *Am J Cardiol* 2012;109:1365–73.
25. Cnotliwy M, Kazimierzczak A, Sledz M, Biernacka J, Zukowski M. The usefulness of N-terminal pro-brain natriuretic peptide and cardiac troponin measurement in the prediction of cardiac morbidity after carotid endarterectomy. *Acta Angiol* 2011;17:199–208.
26. Goei D, Van Kuijk JP, Flu WJ, et al. Usefulness of repeated N-terminal pro-B-type natriuretic peptide measurements as incremental predictor for long-term cardiovascular outcome after vascular surgery. *Am J Cardiol* 2011;107:609–14.
27. Hokschi B, Fahrner R, Schmid RA. Procalcitonin and brain natriuretic peptide as parameters in the postoperative course of patients with major pulmonary resection. *Interact Cardiovasc Thorac Surg* 2007;6:155–8.
28. Hou JL, Gao K, Li M, et al. Increased N-terminal pro-brain natriuretic peptide level predicts atrial fibrillation after surgery for esophageal carcinoma. *World J Gastroenterol* 2008;14:2582–5.
29. Jari R, Mahla E, Perkmann T, et al. Usefulness of pre-operative copeptin concentrations to predict post-operative outcome after major vascular surgery. *Am J Cardiol* 2011;108:1188–95.
30. Lurati Buse GA, Schumacher P, Seeberger E, et al. Randomized comparison of sevoflurane versus propofol to reduce perioperative myocardial ischemia in patients undergoing noncardiac surgery. *Circulation* 2012;126:2696–704.
31. Manikandan R, Nathaniel C, Lewis P, et al. Troponin T and N-terminal pro-brain natriuretic peptide changes in patients undergoing transurethral resection of the prostate. *J Urol* 2005;174:1892–5.
32. McDonagh DL, Mathew JP, White WD, et al. Cognitive function after major noncardiac surgery, apolipoprotein E4 genotype, and biomarkers of brain injury. *Anesthesiology* 2010;112:852–9.
33. Mercantini P, Di Somma S, Magrini L, et al. Preoperative brain natriuretic peptide (BNP) is a better predictor of adverse cardiac events compared to preoperative scoring system in patients who underwent abdominal surgery. *World J Surg* 2012;36:24–30.
34. Park JH, Shin GJ, Ryu JI, Pyun WB. Postoperative B-type natriuretic peptide levels associated with prolonged hospitalization in hypertensive patients after non-cardiac surgery. *Korean Circ J* 2012;42:521–7.
35. Radović M, Damjanović S, Nale D, Mičić S, Vučević D, Radović M. Modulation of aldosterone release by epidural analgesia impacts brain natriuretic peptide: a link to stress cardiomyopathy? Pilot study. *Clin Endocrinol* 2011;649–56.
36. Rajagopalan S, Croal BL, Reeve J, Bachoo P, Brittenden J. N-terminal pro-B-type natriuretic peptide is an independent predictor of all-cause mortality and MACE after major vascular surgery in medium-term follow-up. *Eur J Vasc Endovasc Surg* 2011;41:657–62.
37. Rodseth RN, de Vascellos K, Naidoo P, Biccard BM. Early postoperative BNP does not predict postoperative cardiac events within 30 days of vascular surgery. *South Afr J Anaesth Analg* 2013;19:60–5.
38. Schutt RC, Cevik C, Phy MP. Plasma N-terminal prohormone brain natriuretic peptide as a marker for postoperative cardiac events in high-risk patients undergoing noncardiac surgery. *Am J Cardiol* 2009;104:137–40.
39. Suttie SA, Mofidi R, McCallum R, et al. Immediately postoperative B-type natriuretic peptide and its predictive value. *Ann Vasc Surg* 2011;25:248–55.
40. Talucci V, Magrini L, Petrucciani N, et al. BNP measurement pre- and post-noncardiac surgery as prognostic factor of cardiovascular events in hypertensive patients. *J Hypertens* 2010;28:e188–9.
41. Talucci V, Magrini L, Scarinci A, et al. Evaluation of brain natriuretic peptide (BNP) role as prognostic factor for cardiovascular outcomes in patients undergoing non-cardiac surgery. *Eur Heart J* 2010. Paper presented at: European Society of Cardiology 2010, Stockholm, Sweden, August 28, 2010, to September 1, 2010.
42. Van Kuijk JP, Flu WJ, Hoeks SE, et al. Repeated N-terminal pro B-type natriuretic peptide measurements as incremental predictor for long-term cardiovascular outcome after vascular surgery. *Eur Heart J* 2010. Paper presented at: European Society of Cardiology 2010, Stockholm, Sweden, August 28, 2010 to September 1, 2010.
43. Waliszek M, Waliszek-Iwanicka A, Grycewicz T, et al. Prognostic value of plasma N-terminal pro-B-type natriuretic peptide concentration in patients with normal and impaired left ventricular systolic function undergoing surgery for abdominal aortic aneurysm. *Arch Med Sci* 2011;7:642–7.
44. Bolliger D, Seeberger MD, Lurati Buse GA, et al. A preliminary report on the prognostic significance of preoperative brain natriuretic peptide and postoperative cardiac troponin in patients undergoing major vascular surgery. *Anesth Analg* 2009;108:1069–75.
45. Peduzzi P, Concato J, Kemper E, Holford TR, Feinstein AR. A simulation study of the number of events per variable in logistic regression analysis. *J Clin Epidemiol* 1996;49:1373–9.
46. Devereaux PJ, Xavier D, Pogue J, et al. Characteristics and short-term prognosis of perioperative myocardial infarction in patients undergoing noncardiac surgery: a cohort study. *Ann Intern Med* 2011;154:523–8.

**Key Words:** anesthesia ■ myocardial infarction ■ natriuretic peptides ■ risk factors ■ surgery.

#### ▶ APPENDIX

For supplemental material, please see the online version of this article.

Go to <http://cme.jaccjournals.org>  
to take the CME quiz for this article.