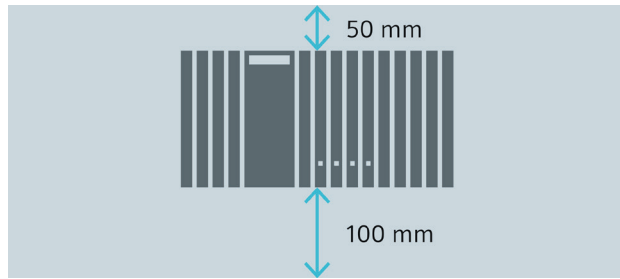


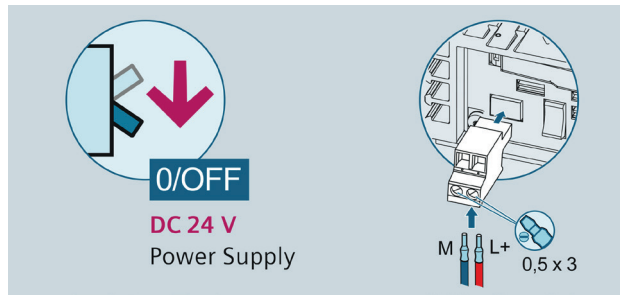
## 1. Mount MindConnect Nano

Mounting positions permitted vertical or horizontal.  
Please make sure there's enough space around the device  
above:  $\geq 50$  mm, below:  $\geq 100$  mm



## 2. Connect Power Supply

1. Connect the protective earth (see „Getting Connected to MindSphere“)
2. Secure the cables
3. Connect the power supply



## 3. Connect with your Network

1. Connect the internet to the X1P1 port for MindSphere connection (see „Getting Connected to MindSphere“)
2. Connect the Ethernet to the X2P1 port for connection to the plant network
3. Switch on the device



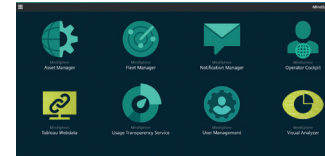
## 4. Load new firmware on MindConnect Nano - if necessary

If your box was already connected to MindSphere V2, you have to set MindConnect Nano to factory settings and upgrade it to a new V3 firmware. For this procedure see „Getting Connected to MindSphere“ or <https://support.industry.siemens.com/cs/ww/en/view/109745561>

## 5. Onboarding Process

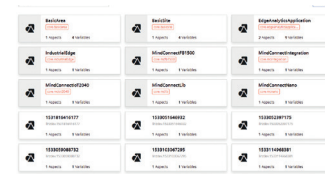
### 1. Login

Access the MindSphere Launchpad by clicking on the link provided via E-Mail by MindSphere.



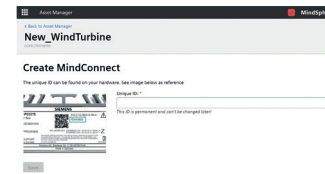
### 2. Asset Manager

Open the Asset Manager and create a new asset from type MindConnectNano (see „Getting Connected to MindSphere“).



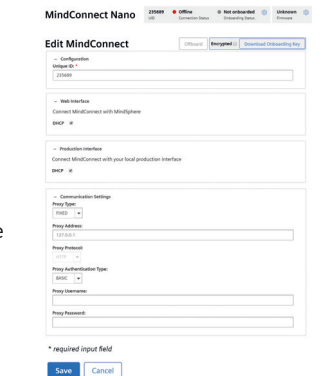
### 3. Enable Connection to MindConnect Element

Enter the MindConnect Nano InfoID. The rating plate is located on the back panel of the device.



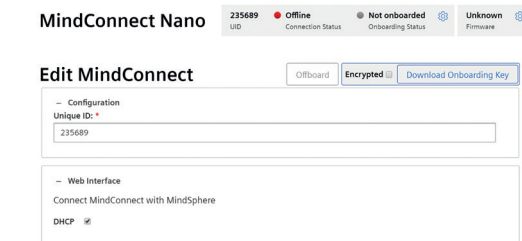
### 4. Configuring network settings

1. Select the asset in the „Asset“ tab.
2. Click on the asset icon e.g. MindConnect Nano.
3. Click on next to „Status“.
4. Activate DHCP if a DHCP server is available in your company network or enter the respective information for static IP address.
5. Enter the proxy data area „Communication Settings“ if necessary and click „Save“.



## 6. Download Configuration to USB

1. Click on next to „Status“.
2. Click on „Download Onboarding Key“.
3. Download the configuration file for the asset and copy it to the root directory of your USB stick. Note: Use USB stick with one FAT32 formatted partition. Configuration file is valid only for seven days.



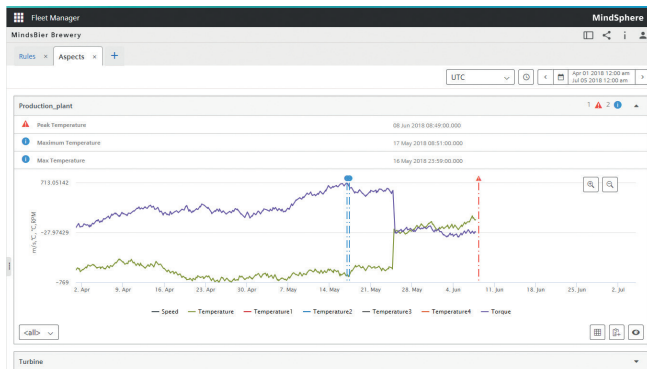
## 7. Plug USB into MindConnect Nano

1. Power LED (PC ON/WD) of MindConnect Nano is green.
2. Insert the USB stick with configured asset data into the MindConnect Nano.
3. The MindConnect Nano automatically reads the USB stick data (RUN/STOP/L1 LED blinks orange), followed by a restart.
4. MindConnect Nano then attempts to establish connection to MindSphere.
5. After a few seconds the RUN/STOP/L1 LED should be green and user interface has the state Onboarded, which means it is connected to MindSphere. (If the onboarding is not successful, see „Getting Connected to MindSphere“).
6. Now remove USB stick from the MindConnect Nano.



## 8. Use MindSphere

Once MindConnect Nano is onboarded, you can configure your asset for data collection. After you have configured asset data, MindConnect Nano starts the data acquisition. You can now start the Fleet Manager to see your machine data. If you have any problems with MindConnect Nano, consult the LOG files in the "Files" extension of Fleet Manager. This extension provides information that can be helpful for troubleshooting. For additional information go to „Getting Connected to MindSphere“.



## Requirements

- PC with internet connection for MindSphere configuration
- Browser for online user interface, supporting HTML5 (e. g. Firefox, Google Chrome, Safari, Opera)
- Login data for MindSphere Access provided by Siemens after ordering MindSphere
- Power Supply, 24 V DC
- Standard USB stick, one partition, FAT32 formatted

## Further Information

- Getting Connected to MindSphere (<https://documentation.mindsphere.io/index.html#/kiosk/en>)
- MindSphere – FAQs (<https://www.mindsphere.io/community>)
- Industry Online Support: <https://support.industry.siemens.com>

This document contains illustrations and accessories. The illustrations may deviate from the particularities of the delivered device and accessories.

We have reviewed the contents of this publication to ensure consistency with the hardware and software described. Since variance cannot be entirely excluded, we cannot guarantee full consistency. However, the information in this publication is reviewed regularly and all necessary corrections will be included in subsequent editions.

In order to protect plants, systems, machines and networks against cyber threats, it is necessary to implement – and continuously maintain – a holistic, state-of-the-art industrial security concept. Siemens' products and solutions only form one element of such a concept. For more information about industrial security, please visit <https://www.siemens.com/industrialsecurity>.

© Siemens AG 2018

Digital Factory  
P.O. Box 48 48  
90026 Nuremberg  
Germany

Subject to change without prior notice  
Article No.: DFPL-T10029-00-7600  
Dispo 21639  
fb 7328 WS 07160.25 A5E38886585-AD  
Printed in Germany

The information provided in this brochure contains merely general descriptions or characteristics of performance which in case of actual use do not always apply as described or which may change as a result of further development of the products. An obligation to provide the respective characteristics shall only exist if expressly agreed in the terms of contract.



# MindConnect Nano

## Quick Start



[siemens.com/mindsphere](https://www.siemens.com/mindsphere)