

Query Interpretations from Entity-Linked Segmentations

WSDM 2022



**Vaibhav
Kasturia¹**



**Marcel
Gohsen²**



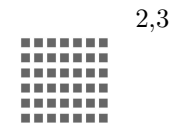
**Matthias
Hagen³**



1,3




2



2,3

Webis

What is the intent?

 source of the Nile



What is the intent?

Is it ...

source | of the | Nile



What is the intent?

Is it ... or ... ?

source | of the | Nile

Source_of_the_Nile



What is the intent?

What does Google think?



source of the Nile



[All](#) [Images](#) [Maps](#) [Videos](#) [News](#) [More](#) [Tools](#)

Nile / Sources



Blue Nile River



Atbarah



White Nile

What is the intent?

What does Google think?



source of the Nile



[All](#) [Images](#) [Maps](#) [Videos](#) [News](#) [More](#) [Tools](#)

Nile / Sources



Blue Nile River



Atbarah



White Nile

⇒ Where is the board game?

Computational Problems

Entity Linking

source of the nile

Explicit entities:

Computational Problems

Entity Linking

source of the `nile`

Explicit entities:



Nile

Computational Problems

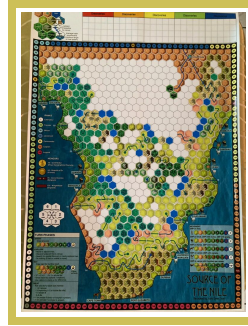
Entity Linking

source of the nile

Explicit entities:



Nile



Source_of_the_Nile

Computational Problems

Entity Linking

source of the `nile`

Explicit entities:



Nile



Source_of_the_Nile

...

Implicit entities:

Computational Problems

Entity Linking

source of the nile

Explicit entities:



Nile



Source_of_the_Nile

...

Implicit entities:



White_Nile

Computational Problems

Entity Linking

source of the nile

Explicit entities:



Nile



Source_of_the_Nile

...

Implicit entities:



White_Nile



Blue_Nile

Computational Problems

Entity Linking

source of the nile

Explicit entities:



Nile



Source_of_the_Nile

...

Implicit entities:



White_Nile

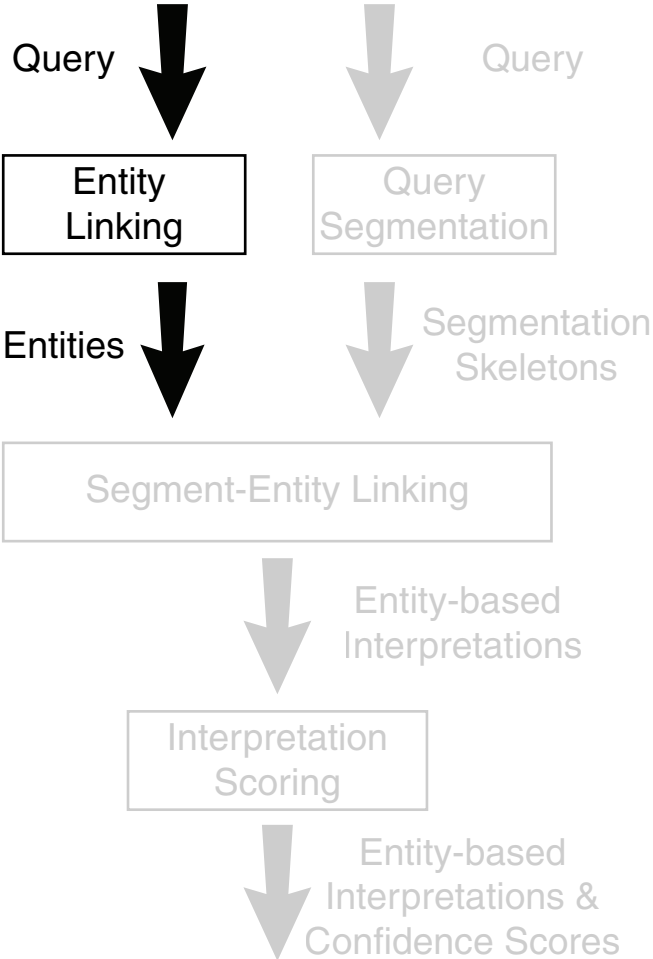


Blue_Nile

...

Computational Problems

Query Interpretation



source of the Nile

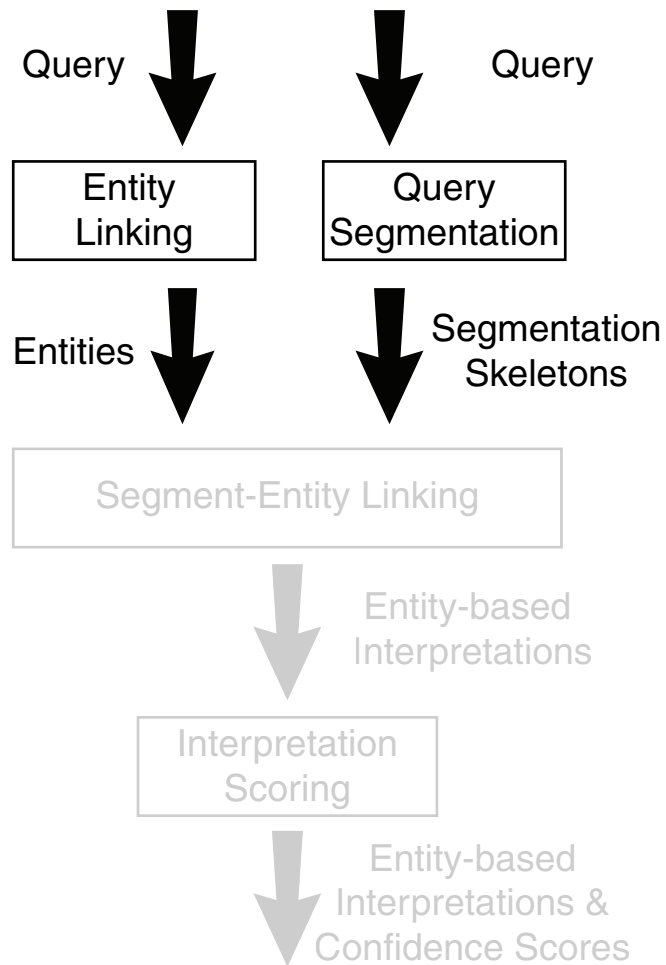
nile → Nile source | of the | Nile
source of the Nile → ... source of the Nile
... ...

source | of the | Nile
Source_of_the_Nile
...

source | of the | Nile = 1.0
Source_of_the_Nile = 0.8
...

Computational Problems

Query Interpretation



source of the nile

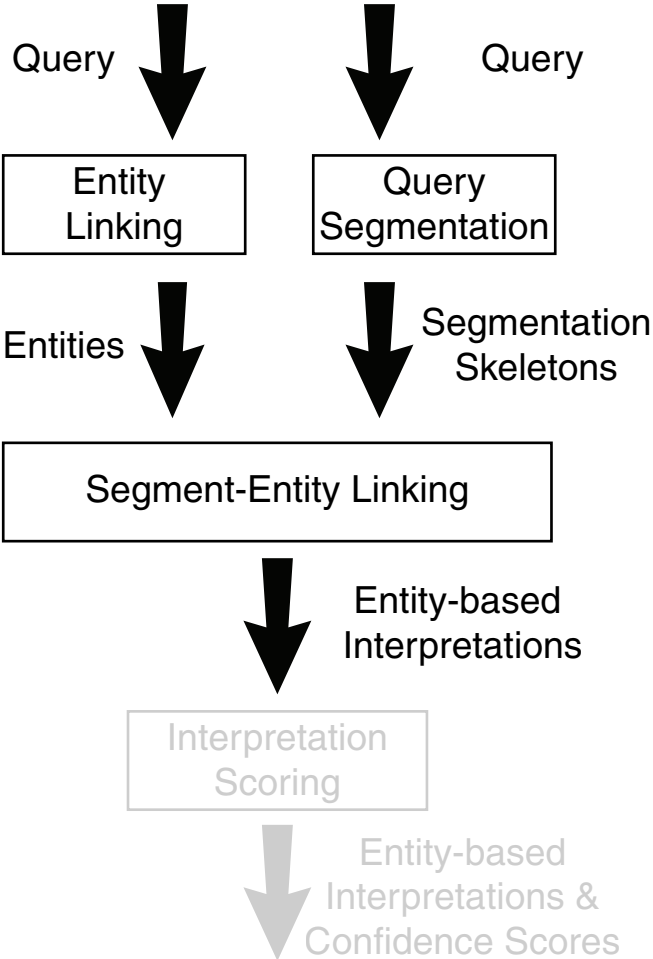
nile → Nile source | of the | nile
source of the nile → ... source of the nile
... ...

source | of the | Nile
Source_of_the_Nile
...

source | of the | Nile = 1.0
Source_of_the_Nile = 0.8
...

Computational Problems

Query Interpretation



source of the nile

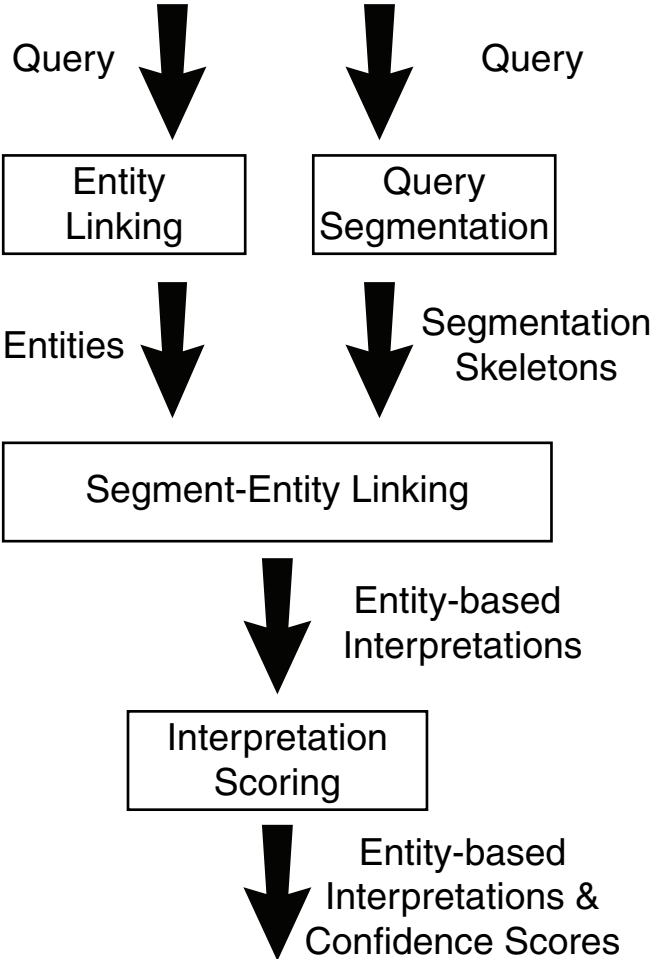
nile → Nile source | of the | nile
source of the nile → ... source of the nile
... ...

source | of the | Nile
Source_of_the_Nile
...

source | of the | Nile = 1.0
Source_of_the_Nile = 0.8
...

Computational Problems

Query Interpretation



source of the nile

nile → Nile source | of the | nile
source of the nile → ... source of the nile
... ...

source | of the | Nile
Source_of_the_Nile
...

source | of the | Nile = 1.0
Source_of_the_Nile = 0.8
...

Evaluation

Experiment: Query Interpretation

Comparison to pairs of *greedy interpretation finding* [Hasibi et al., 2014] and various entity linking approaches.

Data:

- ❑ Test split of our new query interpretation dataset (544 queries)
- ❑ Interpretations that are at least “moderately likely”

Evaluation

Query Interpretation Results

	Complete Matches			Time (ms)
	Recall	Precision	F ₁	
Our approach	0.295	0.336	0.283	47
Dexter	0.230	0.312	0.246	282
Nordlys EL	0.189	0.278	0.207	1,533
Radboud EL	0.144	0.199	0.155	200
Smaph	0.176	0.243	0.190	116,425
Dandelion	0.166	0.226	0.177	74
TagMe	0.165	0.216	0.175	99
Babelify	0.112	0.160	0.124	49
TextRazor	0.098	0.131	0.105	367
FEL	0.133	0.173	0.141	22
Ambiverse	0.007	0.011	0.009	53

Conclusion

Contributions:

- ❑ Entity-based query interpretation
- ❑ Combination annotated dataset: 2,800 queries
- ❑ Recall-oriented explicit entity recognizer
- ❑ Segmentation-based query interpretation method
- ❑ Comparison to existing entity linking and interpretation methods

Conclusion

Contributions:

- ❑ Entity-based query interpretation
- ❑ Combination annotated dataset: 2,800 queries
- ❑ Recall-oriented explicit entity recognizer
- ❑ Segmentation-based query interpretation method
- ❑ Comparison to existing entity linking and interpretation methods

Future work:

- ❑ Implicit entity recognition
- ❑ Query interpretation for conversational systems

Conclusion

Contributions:

- ❑ Entity-based query interpretation
- ❑ Combination annotated dataset: 2,800 queries
- ❑ Recall-oriented explicit entity recognizer
- ❑ Segmentation-based query interpretation method
- ❑ Comparison to existing entity linking and interpretation methods

Future work:

- ❑ Implicit entity recognition
- ❑ Query interpretation for conversational systems

Thank you! :-)