

# Coastal flooding in the Maldives: an assessment of historic events and their implications

Matthew Wadey<sup>1,2</sup> Sally Brown<sup>1</sup> Robert J. Nicholls<sup>1</sup> Ivan Haigh<sup>3,4</sup>

<sup>1</sup> Faculty of Engineering and the Environment, University of Southampton, Southampton SO17 1BJ, UK <sup>2</sup> Eastern

Solent Coastal Partnership, Havant Borough Council, 2 Penner Road, Havant PO9 1QH, UK

<sup>3</sup> Ocean and Earth Sciences, National Oceanography Centre, University of Southampton, European Way, Southampton SO14 3ZH, UK

<sup>4</sup> School of Civil, Environmental and Mining Engineering and the UWA Oceans Institute, The University of Western Australia, 35 Stirling Highway, Crawley, WA 6009, Australia

## Abstract

With many inhabited islands only at about 1 m above mean sea level, the Maldives is among the nations most threatened by coastal flooding and sea level rise. However, the understanding of recent coastal flood events in the Maldives is limited and is important to understanding future flood threats. This paper assesses (1) the sea level and wave climate of the Maldives, (2) the sea level and wave conditions during recent coastal flood events, and (3) the implications for flood management and future research. The analysis uses observed still water levels (1987–2015) and hindcast wave conditions (1979–2015). Two significant flood events on 10–13 April 1987 and 15–17 May 2007 are examined in detail. This shows that coastal flooding in the Maldives occurs due to multiple interacting sources. These include long-period (up to 20 s) energetic waves generated in the Southern Ocean combined with spring tides. Wave run-up (mainly wave set-up) appears an essential mechanism for a flood, but is currently poorly quantified. However, as sea levels continue to rise the conditions that produce a flood will occur more frequently, suggesting that flooding will become common in the Maldives. This analysis is a starting point for future research and highlights the need to continue research on flood sources, pathways and receptors, and plan adaptation measures. Priorities include monitoring of waves, sea levels and flood events, and a better understanding of set-up (and other shallow water processes over reefs).

## Keywords

The Maldives Sea level rise Coastal flooding Swell waves Run-up Set-up Climate change adaptation

## 1 Introduction

Hundreds of millions of people are presently exposed to the effects of extreme sea levels and coastal floods (e.g. Lichter et al. 2010; Hinkel et al. 2014). Over the past decade, major storm surge events have caused extensive human and economic losses, whilst there may also be substantive losses from more frequent smaller coastal floods that are under-reported (Sadoff et al. 2015). Floods have always been a hazard to low-lying coastal populations (Kron 2013); but it is increasingly recognised that the number of people exposed to floods is growing due to various factors such as coastal population growth (Neumann et al. 2015) and sea level rise (Church et al. 2013). Tide gauge records indicate a global average sea level rise of  $1.7 \pm 0.2$  mm year<sup>-1</sup> from 1900 to 2010, whilst satellite altimetry data indicate a higher rate of  $2.8 \pm 0.8$  mm year<sup>-1</sup>, over the period 1993–2010 (Church et al. 2013). The Intergovernmental Panel on Climate Change (IPCC) Fifth Assessment Report (Church et al. 2013) concluded that over the remainder of the twenty-first century it is 'very likely' that mean sea levels will increase at a greater rate than previous observations. It is hoped that the 'Paris Agreement', a commitment by 195 nations to stem global average temperature increases to well below 2°C (compared to pre-industrial levels)(United Nations 2015), can limit the rate of this rise, but some rise in sea level is inevitable due to the 'commitment to sea level rise', which arises because of the long timescale of the oceans response to atmospheric temperature rise (Nicholls and Lowe 2004; Church et al. 2013).

The threats of climate change and sea level rise (SLR) to small islands have been recognised since the late 1980s and have been reiterated in every IPCC assessment (e.g. Pernetta and Sestini 1989; Pernetta 1992; Tegart et al. 1990; Nurse et al. 2014). The most vulnerable islands are coral atolls, which are especially susceptible to the effects of SLR and other environmental changes (e.g. coral bleaching due to high sea surface temperatures, periodic flooding). Global analyses suggest that island regions will experience the largest relative increase in flood risk due to SLR in the coming century (Nicholls et al. 1999; Nicholls 2004) and low-lying atoll nations appear to be consistently vulnerable across a wide range of scenarios (Nicholls and Tol 2006). Many small islands in the Indian and Pacific oceans are low-lying at only 4 m or less maximum elevation above sea level (e.g. Kench et al. 2003). This includes whole nations such as the Maldives, Tuvalu and Kiribati. Hence, it is apparent that small island states and low-lying atoll island regions have high vulnerability to SLR and climate change, and they will have to be 'early adaptors' to survive (Betzold 2015).

This paper considers sea levels, waves and coastal flooding in the Maldives, situated in the Indian Ocean, which is the lowest nation in the world (Fig. 1). The land area in the Maldives is relatively small (298 km<sup>2</sup>), although the islands span 860 km north to south and up to 100 km west to east, covering a total area of approximately 107,500 km<sup>2</sup>. Most of the land lies at B1 m above mean sea level (MSL)—refer to Appendix 1. The Maldives consists of approximately 1200 islands with the population of 325,000 located on 198 of these islands. In 2015, the nation had an annual population growth rate of 2% (World Bank 2015). More than 100,000 people live on the capital city of Malé, and this urban population is expected to continue to grow substantially in the future due to continued internal migration (Speelman 2016). Approximately 100 islands are dedicated to tourist resorts, the biggest source of income for the country.

The Maldivian atolls are already threatened by erosion and periodic flooding from the sea (e.g. Jameel 2007). Like many low-lying islands they are susceptible to inundation from energetic swell (long-wavelength wind waves), which can propagate thousands of kilometres across ocean basins (Munk et al. 1963; Harangozo 1992; Hoeke et al. 2013). However, detailed research on the causes of coastal flood events in the Maldives has been limited. A notable flood event was the swell wave floods of

106 Wadey et al 2017 - Coastal floods in the Maldives - accepted manuscript for Natural Hazards  
107 10–13 April 1987 which displaced over 300 people, and affected 16 islands with the  
108 severest impacts in Malé (e.g. JICA 2001). This event triggered debate about  
109 whether the event was a realisation of climate change and SLR (e.g. Harangozo  
110 1992; Pernetta 1992; Church et al. 2006). Subsequently, defences were upgraded  
111 in the 1990s, particularly around Malé (Naylor 2015). The 26 December 2004 Indian  
112 Ocean tsunami over washed many islands (Fritz et al. 2006) with over 80 people  
113 killed and 100,000 people affected across the nation (Richmond and Gibbons 2005).  
114 This was a seismically generated event rather than tidal-meteorological flooding,  
115 although it emphasised the vulnerability of the islands. During 15–17 May 2007,  
116 energetic swells from the Southern Ocean flooded 88 islands across 18 atoll districts.  
117 Over 1600 people were evacuated from their homes (approx. 500 housing units were  
118 damaged), but fortunately there were no recorded fatalities.

119 Despite its high vulnerability, the Maldives lacks a detailed and up-to-date  
120 scientific assessment that considers sea levels, waves and coastal floods. An  
121 assessment of these mechanisms is an important first step to understand adaptation  
122 management needs, and to provide specific guidance to plan research and monitoring  
123 requirements to support this activity. Thus, the overall aim of this paper is to assess  
124 the oceanographic sources of coastal flooding in the Maldives, and consider their  
125 present and future implications given SLR. The specific objectives are to analyse:

- 126 1. The general characteristics of the oceanographic sources of flooding around the  
127 Maldives: waves, tide, surges and mean sea level;
- 128 2. Previous coastal flood events—particularly the two largest known events (occurring  
129 in 1987 and 2007) and investigate their driving mechanisms, relative sea level  
130 conditions, and consequences; and
- 131 3. The implications of these results for future coastal flooding and adaptation,  
132 including recommendations for monitoring and future research.

133 The structure of this paper is as follows: Sect. 2 summarises the data and methods;  
134 Sect. 3 assesses the sea level and wave climate, Sect. 4 analyses the coastal flood  
135 events and their sources, Sect. 5 discusses the results and their implications, and  
136 conclusions are given in Sect. 6.

137  
138

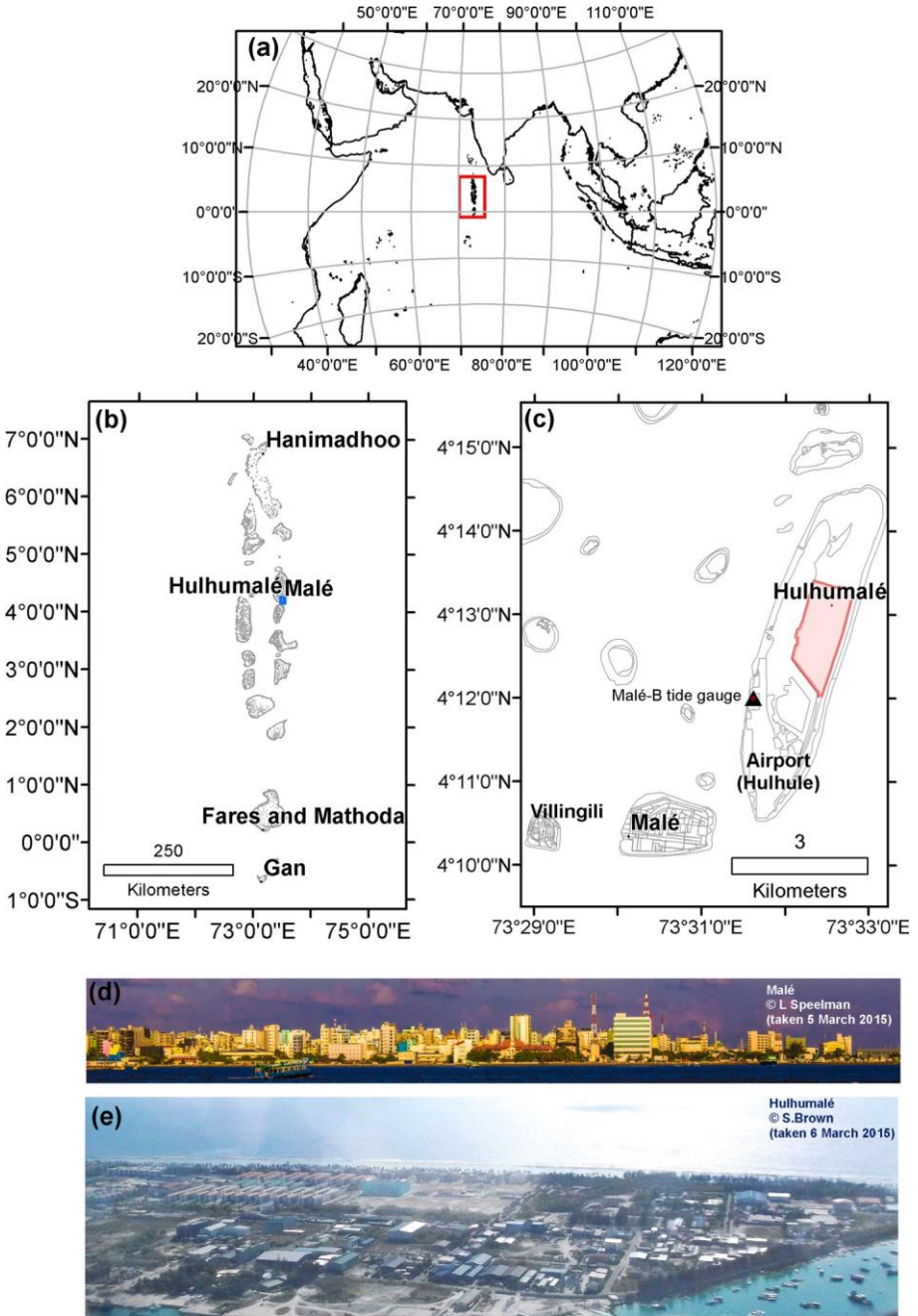


Fig. 1 Location maps a global view, the Maldives highlighted by the red box, b national view, c locations mentioned including the capital Malé, d view of southern Malé taken from a boat and e view of the artificial island Hulhumalé which is currently being developed to alleviate population pressure on nearby Malé

139  
141  
142  
143

144

145

146

147

148

149

150

151

152

153

154

155

156

157

158

159

160

161

162

163

164

165

166

167

168

169

170

171

172

173

174

175

176

177

178

179

180

181

182

183

184

185

186

187

188

189

190

191

192

193

194

195

196

197

198

199

## 2 Data and methods

The main data used to determine the characteristics of sea levels and waves that can cause coastal floods, comprised sea level and wave time series, and a synopsis of relevant information extracted from existing literature. The sea level data were recorded at three tide gauges across the Maldives and wave data from a hindcast time series (since, to our knowledge, no wave buoy data are publically available).

Observed sea levels are available for three stations (Gan, Malé, Hanimaadhoo—locations shown in Fig. 1) at hourly frequency from the University of Hawaii Sea Level Center (<http://uhslc.soest.hawaii.edu/datainfo/>). The sea levels at each gauge were separated into: mean sea level (MSL), astronomical tide and non-tidal residual (NTR) components. The MSL component (indicative of seasonal, inter-annual and longer-term change) was derived using a 30-day running mean of the observed sea level time series, and the tidal component was estimated (minus the 30-day mean) using the T-Tide harmonic analysis software (Pawlowicz et al. 2002). Analyses were undertaken for each calendar year with 67 tidal constituents. The NTR was calculated by subtracting the MSL and tidal component from the total measured sea level. The NTR primarily contains the storm surge component, which represents sea level forcing due to changes in atmospheric pressure and wind. The skew surge was also calculated for each high water event. This is the difference between the observed elevation of high water and the corresponding predicted high water, and can quantify the contribution of surges to extreme sea level events (de Vries et al. 1995; Horsburgh and Wilson 2007).

Wave hindcast data were used from WAVEWATCH III (WW3), an ocean surface wave model developed at the National Oceanic and Atmospheric Administration—National Centers for Environmental Prediction (NOAA—NCEP) (Tolman 2002, 2009). The WAVEWATCH III<sup>®</sup> hindcast covers the entire globe, and outputs from model v2.22 are available for the Indian and Southern Ocean at 3-h temporal resolution, from a 30-arc-minute global grid. Details of the wind forcing and bathymetry are available at <http://polar.ncep.noaa.gov/waves/implementations.shtml>. The data span the period 1979 to 2015. Grids for 1979–2006 were downloaded from <http://polar.ncep.noaa.gov/waves/nopp-phase1/> and 2006–2015 were downloaded from <http://polar.ncep.noaa.gov/waves/ensemble/download.shtml>. Significant wave height ( $H_s$ ), wave period and direction were extracted at the data points shown in Appendix 3 and also plotted over the Indian Ocean domain to illustrate swell propagation on a wider scale. A limitation to this model is that the physics does not cover conditions where waves are severely depth-limited. Furthermore, the model is applied on spatial scales larger than 1–10 km, outside the surf zone and not in the coral reef environments that surround the Maldives. More detailed descriptions of the model and its governing equations are given in Tolman (2002).

In this paper, we discuss the effects of shallow water processes upon flooding. Wave run-up broadly describes the projection of water above the still water level. The upper limit of run-up is defined by swash, superimposed on set-up which is the super-elevation of mean water level at the coast caused by breaking incident waves. Set-up is the most frequently referred to component of run-up on reef coastlines, and as with surge and tide, set-up appears as a slowly varying change in sea level to an observer (e.g. Gerritsen 1981; Dean et al. 2005). Set-up is regarded as a key coastal flood mechanism in the Maldives and other ocean islands (e.g. Harangozo 1992; Gourlay 1996; Hoeke et al. 2013, 2015). In an attempt to amalgamate wave height and period (linked to set-up), wave power was calculated since this can indicate the transport of energy by waves, which is known to be proportional to wave set-up in reef environments (e.g. Gourlay 1996). These time series aim to compare events, but we acknowledge the coarse resolution wave data and lack of tools (to assess run-up on coral reef coastlines), and we cannot accurately calculate the vertical displacement (above tide and surge) of water level

Wadey et al 2017 - Coastal floods in the Maldives - accepted manuscript for Natural Hazards at the coast. Therefore, the literature was also reviewed to provide a synopsis of run-up, including set-up, relevant to this case study. Details of the formula that were used are provided in Appendix 2.

### 3 Sea level, wave climate and floods

This section describes the first objective, which is to assess the characteristics of sea level (tide, surges and mean sea level) and waves around the Maldives. Coastal flood events are discussed briefly in the context of the causative mechanisms and are described in more detail in the next section.

#### 3.1 Tides and surges

The first sea level component analysed is tides. Due to its open ocean location, the Maldives has relatively small tides (Fig. 2). The mean spring tidal ranges at Gan, Malé and Hanimaadhoo are 0.96, 0.76 and 0.70 m, respectively (Woodworth 2005). The tidal regime is semi-diurnal with strongly diurnal inequalities: the two high tides and two low tides are of different heights. On springs the larger of each day's two tidal high waters is approximately 0.25 m higher than the smaller tidal high water of the day, and approximately 0.1 m larger on neaps. Storm surges are also small in the Maldives (e.g. Titus 1989; Woodworth 2005; Church et al. 2006), with none across the data larger than 0.25 m, whilst skew surges have not exceeded 0.15 m. The lack of evidence of large surges is consistent with the islands location near the equator (the 5° latitude zone is generally regarded as the approximate limit to tropical storms). It has elsewhere been hypothesised that larger surges of up to 1 m may be possible in the northern islands of the Maldives (DIRAM Team and UNDP Maldives 2007): the northernmost atoll Ihavandhippolhu (at 7°) is potentially exposed to cyclones.

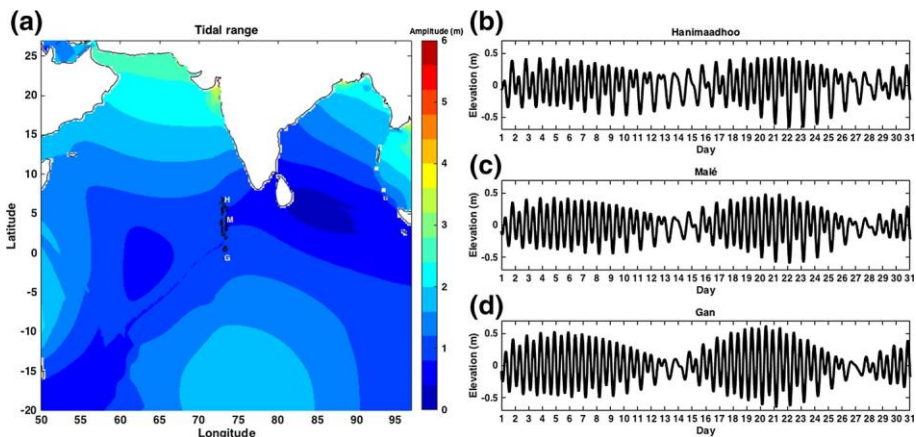


Fig. 2 Tides in the Maldives: a) with a view to the surrounding Indian Ocean, b) at the northernmost tide gauge Hanimaadhoo, c) Malé, d) at the southernmost gauge at Gan. The tides shown are for March 2007. The tidal data were generated by Oregon State University (OSU) Tidal Inversion Software (OTIS) Egbert and Erofeeva (2002).

#### 3.2 Mean sea level

The third main component of sea level assessed is MSL, which during storm events has a smaller effect upon sea level height than tides and surges, but has a notable signal over periods of months to years (c.f. Pugh 2004; Woodworth 2005). We do not assess mechanisms for regional or local sea level change, but calculate the

Wadey et al 2017 - Coastal floods in the Maldives - accepted manuscript for Natural Hazards trends at the tide gauges. Natural ocean variability (and monthly to decadal effects on sea level) has already been noted by previous authors, associated with regional weather patterns (e.g. El Niño- Southern Oscillation, the Asian–Australian monsoon, North Pacific Decadal Oscillation) (Woodworth 2005; Church et al. 2006). As shown in Fig. 3, month-on-month changes to the (30-day running averaged) MSL are of the order of several cm at the Gan and Malé gauges. There is higher variability further north at Hanimaadhooh (of up to 0.11 m), consistent with the winter (December to March) wind-driven mass redistribution that can cause significant sea level increase around the northern Maldives (Han et al. 2010). An earlier study of sea level in the region (Church et al. 2006) determined upward trends of 8.4, 3.7 and 4.4 mm year<sup>-1</sup> for the tide gauge records at Gan, Malé and Hanimaadhooh, respectively—although the records at that time were <10 years long, and therefore deemed unrepresentative of longer trends. Church et al. (2006) generated a 52-year (January 1950 to December 2001) reconstructed time series, which determined rates of approx. 1 mm year<sup>-1</sup> at the same sites. Woodroffe (2005) used geological evidence to infer a net increase of up to 6 mm over the 20–30-year period up to 1989 (in the southern Maldives), which was consistent with the reconstructed time series (over that period) of Church et al.(2006).

In our analysis, we find upward trends in MSL. For the Gan record (1989–2015), SLR is  $3.46 \pm 0.25$  mm year<sup>-1</sup>; for Malé (1991–2015)  $4.38 \pm 0.36$  mm year<sup>-1</sup>, and at Hanimaadhooh (1992–2015) is  $4.22 \pm 0.36$  mm year<sup>-1</sup> (the latter tide gauge was moved in 2002 which may affect the accuracy of this rate). There is some evidence for an increase in extreme HWs over time. For example, at Gan, 7 out of the top 10 ranked HWs occurred in the year 2015, and almost half of the top 30 ranked HWs also occurred during that year (Table 1). However, the period of extreme high waters of September–October 2015 at the southern gauges also coincides with peak lunar nodal (astronomical tide) modulation (refer to Haigh et al. 2011).

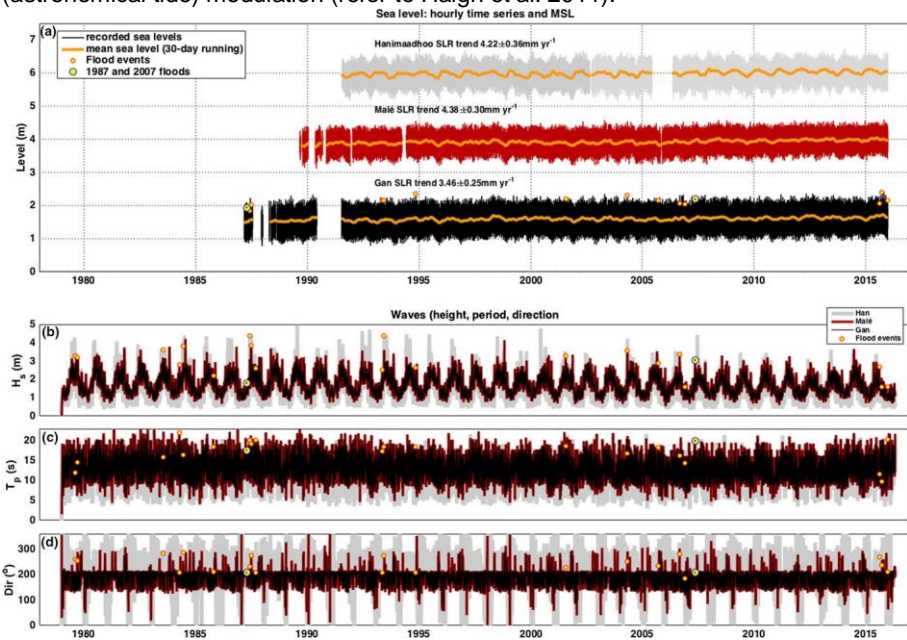


Fig. 3 a The available sea level time series for the 3 tide gauges showing observed levels, 30-day running mean sea level (orange) and the linear trend across each record; b significant wave height time series from WAVEWATCH III—the flood events in Table 2 are shown by yellow markers on the highest values associated with each event, and the green markers are the April 1987 and May 2007 severe events; c wave period; d wave direction

Table 1 Top 10 high waters since 1987 in the Maldives (note that the sea level is provided to 3 decimal places to differentiate the ranking positions)

Rank HW	Date-time	Sea level (m)	Tide (m)	Skew surge (m)	MSL (m)	Wave power at HW (kW)
<i>(a) Gan—where (for this longest of tide gauge records in the Maldives) wave power is also provided, and the maximum high waters of the 1987 and 2007 floods</i>						
1	27/10/15 21:00	2.420	0.66	0.04	1.71	22
2	26/10/15 20:00	2.404	0.62	0.07	1.72	11
3	29/09/15 22:00	2.402	0.65	0.03	1.72	18
4	28/10/15 22:00	2.397	0.65	0.04	1.71	22
5	28/09/15 21:00	2.384	0.65	0.01	1.72	10
6	27/09/15 21:00	2.368	0.60	0.05	1.72	12
7	28/09/15 09:00	2.366	0.58	0.06	1.72	13
=8	03/11/94 21:00	2.360	0.66	0.06	1.64	23
=8	06/05/12 09:00	2.360	0.63	0.04	1.69	19
=8	19/08/12 10:00	2.360	0.58	0.08	1.70	12
13,168	10/04/87 19:00	1.840	0.39	-0.05	1.51	23
9124	11/04/87 20:00	1.940	0.45	-0.02	1.51	24
7055	12/04/87 20:00	1.990	0.49	-0.01	1.51	22
5912	13/04/87 09:00	2.020	0.53	-0.02	1.51	20
940	15/05/07 08:00	2.177	0.56	0.01	1.60	43
751	16/05/07 09:00	2.189	0.59	-0.01	1.60	38
1105	17/05/07 09:00	2.168	0.59	-0.03	1.60	50
Highest wave power coincident with a known high water						
12,000	24/06/2014 19:00	1.870	0.21	0.00	1.66	63
<i>(b) Malé</i>						
1	28/10/15 21:00	2.592	0.51	0.08	2.00	
2	29/10/15 22:00	2.581	0.48	0.10	2.00	
=3	18/04/03 09:00	2.576	0.55	0.05	1.97	
=3	04/06/08 09:00	2.576	0.50	0.05	2.03	
5	07/05/12 09:00	2.572	0.52	0.03	2.02	
6	15/10/08 21:00	2.571	0.52	0.08	1.97	
=7	05/06/08 09:00	2.569	0.48	0.07	2.03	
=7	28/10/11 21:00	2.569	0.54	0.06	1.98	
9	27/10/11 21:00	2.568	0.55	0.04	1.98	
10	23/07/13 09:00	2.563	0.50	0.04	2.03	
332	16/05/07 08:00	2.458	0.51	-0.02	1.96	
<i>(c) Hanimaadhoo</i>						
1	29/04/02 09:00	1.745	0.58	0.06	1.11	
2	23/12/14 21:00	1.706	0.57	0.03	1.11	
3	03/01/14 21:00	1.704	0.60	0.02	1.09	
4	23/12/10 21:00	1.703	0.54	0.06	1.10	
5	11/02/13 20:00	1.698	0.57	0.02	1.11	
6	18/01/95 21:00	1.695	0.50	0.10	1.10	
=7	18/06/07 09:00	1.689	0.54	0.13	1.01	
=7	28/04/02 08:00	1.689	0.57	0.11	1.01	



287

288

Table 1 continued

Rank HW	Date-time	Sea level (m)	Tide (m)	Skew surge (m)	MSL (m)	Wave power at HW (kW)
=7	21/01/11 21:00	1.689	0.55	0.10	1.04	
10	15/06/14 09:00	1.684	0.52	0.06	1.11	
14	17/05/07 08:00	1.676	0.52	0.06	1.10	

290

291

292

293

294

295

296

297

298

299

300

301

302

303

304

305

306

307

308

309

310

311

312

313

314

315

### 3.3 Waves

Ocean wave conditions are the main control upon wave energy and approach at the outer margins of the atolls (Pernetta and Sestini 1989), and coastal flooding at islands in the Maldives has primarily been associated with extreme wave events (e.g. Harangozo 1992). The April 1987 Maldives floods, for example, were associated with long (15 s) period waves (Harangozo 1992). Wave climate in the vicinity of the Maldives is influenced by both local and distant waves from all directions. Sabique et al. (2012) determined that Southern Indian Ocean swells play an important role in determining the Northern Indian Ocean wave climate.

Figure 3c, d, f shows the WAVEWATCH III time series of wave height, period and direction at the three sites. Annual patterns of wave height reveal the effects of the two monsoon periods, which are marked by strong seasonal reversals in wind direction confined to a narrow range of wind angles (Kench and Brander 2006). Towards the middle of each year, there is an increase in wave heights with the highest waves occurring from June to August, due to the effects of the Indian monsoon in the northern part of the Indian Ocean. During the summer or 'northeast monsoon' (December to March), waves are generally smaller than the middle of the year, despite locally stronger winds. There are some large wave events and floods in the central and northern Maldives at the onset of the northeast monsoon—for example, the swells which recently impacted the northeast Maldives were considered 'normal' for that time of year (late December 2015) (Maldives Independent 2015c). These floods were also associated with high tide levels.

**Table 2.** A catalogue of coastal flood events recorded in the Maldives 1966-2015, from various sources including the Detailed Island Risk Assessment of Maldives reports (UNDP, 2007); and the associated sea level and wave conditions at Gan (the highest values associated with the dates available are provided). Note that atolls are actually atoll districts (currently there are 189 islands, 19 atolls and 2 cities in the Maldives, although administrative districts have changed under different government regimes).

Date of event	Source	Description	Highest HW (m)	Peak Hs (m)	Peak T (s)	Peak 12 hourly power (kW)	HW at peak power (m)	Direction of peak power
5 July 1966 24 August 1975 7 May 1978	DIRAM Team and UNDP Maldives (2007)	No details available – these coastal floods reported to have affected southern islands ( <u>Viligili</u> , <u>Feydhoo</u> , <u>Thirudhoo</u> ).						
8 August 1979 17 September 1979 14 July 1983 6-7 April 1984 6-7 June 1984 14-15 October 1985			N/A	2.71 2.72 3.03 2.79 2.29 2.21	11.09 11.01 11.02 21.75 15.65 17.32	30 29 32 48 35 36	N/A	147 149 135 202 196 212
10-13 April 1987	<u>Harangozo</u> (1992); <u>Naylor</u> (2015); <u>Permetta</u> (1992).	Most damage was at <u>Malé</u> and floods reportedly impacted 16 islands across 13 atolls. Impacts to 300 people, 200 houses. Reportedly caused \$6 million damages to sea walls around the city and the airport; and an outbreak of Cholera. The poor state of defences and low-lying reclaimed land were to blame for the flooding of <u>Malé</u> .	1.94	1.82	17.59	23	1.71	211
2-3 June 1987 28 June 1987 9-10 September 1987	DIRAM Team and UNDP Maldives (2007)	Details unavailable.		2.15 1.84 2.01	20.13 19.22 19.91	35 60 45		209 194 202
June-July 1988 (unspecified dates)	<u>Permetta</u> (1989); JICA (2001); ADRC (2005).	A period of flooding with dates unspecified. It was reported that high waves and sea level damaged houses, structures and coastal areas. Widespread flooding was reported on islands in the south (ADRC (2005). <u>Permetta</u> (1989) reported this as a 'July 1988 high water situation at <u>Thulhadhoo</u> (located on the outer western Maldives, towards the northern central part of the country) – and that it was caused by south-westerly waves of up to 2.5 m high and with periods of 12-15 s, accompanied by high tide and south-westerly wind. Damage was reportedly enhanced by lack of beaches and presence of vertical low sea walls.					Morning of 30 June-1 July HWs of 2.15-1.6m, coincident with wave power 34-37 kW.  Also over the two days 19-30 July HW reached 2.14m, wave power 18 kW.	
September 1988 (unspecified date)	JICA (2001)	Details unavailable.						26-27 Sept HW as high as 2.2m, with wave power >22 kW.
June-July 1991 (unspecified dates) 8 May 1993 5 June 1993 6 November 1994	DIRAM Team and UNDP Maldives (2007)	Details unavailable.	14-15 July HW as high as 2.20m, coincident with wave power 35 kW	2.16 2.15 2.35	2.62 3.61 2.63	15.85 18.46 17.45	25 60 38	1.33 1.22 1.50
								194 207 201

20 July 2001					2.20	3.29	17.72	55	2.20	204
June-July 2003 (unspecified dates)					Morning of 31 July HW 2.24m, coincident with wave power 34kw					
3-5 May 2004					2.31	2.83	16.72	43	2.11	208
June-July 2005 (unspecified dates)					Morning of 22 July HW 2.24m, coincident with wave power 40kw					
18 September 2005					2.16	2.89	17.35	46	1.05	201
June 2006 (unspecified date).					Morning 27 June HW 2.19m, coincident with wave power 26kw.					
4 September 2006					2.07	2.20	11.79	25	1.62	166
30 November 2006					2.04	1.26	15.18	14	1.84	203
15-17 May 07	DIRAM Team and UNDP Maldives (2007)			Floods affected 1,649 people on 88 islands across 18 atolls.	2.19	3.05	19.74	45	1.49	210
11-12 August 2015	Maldives (2015a)	Independent		Flooding event in the northeast of <u>Malé</u> with the eastern waterfront flooded to 0.5m. Pumping was required to remove the water. Flooding affected the outer road, cafés and restaurants. Swells were not reported further south. Associated with strong winds. Reporting suggested that the flooding and swells happen every year but this event was worse than usual in <u>Malé</u> , and a month earlier than usual.	2.07	2.28	11.58	24	1.96	146
27-30 September 2015	Maldives (2015b)	Independent,		Waves combined with high tides caused minor flooding in 5 southern islands ( <u>Gaafu Alif</u> and <u>Gaafu Dhaal</u> atolls and <u>Kolhufushi</u> island in <u>Mee ru</u> atoll. The flooding did not cause severe damage and were not as bad as predicted.	2.40	1.61	6.37	12	2.37	154
28 December 2015	Maldives (2015c)	Independent		Swells hit <u>Komandoo</u> island (northeast Maldives) around 2:00am. The water seeped 300 feet [91 m] through the island from the northeast side. No houses were damaged. Floodwater reached 3 homes, but the water was kept at bay with sandbags.	2.15	1.20	20.33	19	2.04	212

322

323 For much of the year, swell is a principal factor in determining the wave climate of  
324 the northern Indian Ocean (Sabique et al. 2012), and the wave period time series  
325 appears more chaotic than wave height (Fig. 3d). This is partly because swell waves  
326 reach the Maldives throughout the year, generated from low-pressure systems  
327 persistently passing through the 'Roaring Forties' (between latitudes 40° south and 50°  
328 south). Late April–early May marks the onset of the 'southwest monsoon' season  
329 where despite locally calm and dry weather, stronger winds are generated thousands  
330 of kilometres south and southwest of the Maldives, which can generate large and  
331 long-period waves. This consistent high-period swell wave activity from the southern  
332 Indian Ocean occurs between March and November, and during this period, the  
333 Maldives often experiences larger waves (and minor flooding) from further afield,  
334 known locally as 'Udha' (DIRAM Team and UNDP Maldives 2007). As discussed in  
335 the next section, two severe flood events occurred during this period: 10–13 April 1987  
336 and 15–17 May 2007.

337

338

339

### 3.4 Shallow water wave processes

340

341

342

343

344

345

346

347

348

349

350

351

352

353

354

355

356

### 3.5 Coastal floods

357

358

359

360

361

362

363

364

365

366

367

368

369

370

371

372

373

374

375

376

377

Table 2 provides a collation of coastal flood events (i.e. listed as caused by large waves, tide or surge) from various sources, including media sources found online, and a series of reports (the 'detailed island risk assessment in the Maldives'—DIRAM) commissioned in 2007 by the Government of Maldives (DIRAM Team and UNDP Maldives 2007). Most records lack detail such as the source and pathways of flooding, severity of impacts, or duration. They indicate that minor flood events are common throughout the Maldives, with at least 30 flood events in 50 years, including the two large events in 1987 and 2007 already mentioned. Locally they have been accepted as resulting from waves generated during the onset of southwest monsoon season and are regarded as being almost annual, often during the months of May–June. Impacts from these events tend to be restricted to within 20 m of the shoreline, with flood depths of  $\leq 1$  m, mainly affecting reclaimed areas and causing minor crop damage (DIRAM Team and UNDP Maldives 2007). The flood event, water level and wave data (Fig. 3) indicate most events have coincided with the mid-year wave height maxima, and are associated with wave periods of 10–20 s, with (often Southern Ocean generated) waves of a south-westerly and sometimes westerly direction. However, flood events in August and September 2015 were not so much linked to wave period, rather high tides and (more locally generated) wave heights. All of the flood events for which there is a specific date

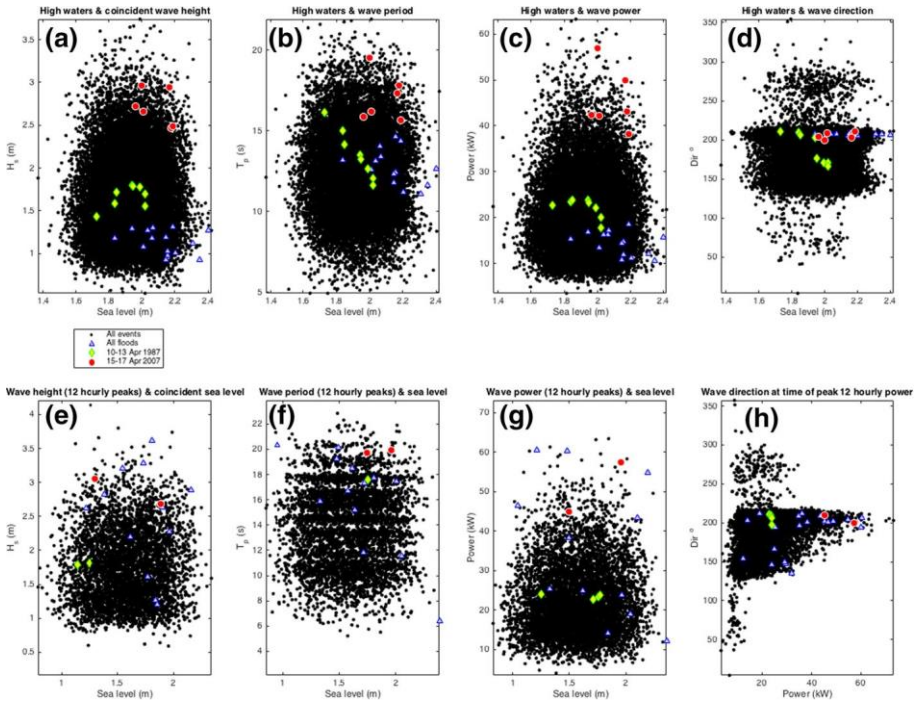


Fig. 4 For the data at Gan1987–2015: a–d Scatter plots of twice daily high water values against simultaneous wave height, period, run-up and power values (interpolated), and e–h 12-h wave peaks and simultaneous sea level values (hourly data, interpolated to the wave height, period, power peaks) and wave direction at time of peak power. In each case, the 1987 (yellow dots) and 2007 (red) events are highlighted, and the flood events for which specific dates are available, listed in Table 2

### 3.6 Summary

From a simple frequentist approach, the record of events in Table 2 (31 incidences of flooding from 1966 to 2015) together suggests that minor coastal floods occur about every 1.6 years and that severe floods (namely those of April 1987 and May 2007) can be expected approximately every 20 years. This approach is overly simplistic (e.g. due to limitations in reporting affecting the sample size, and also changing human and physical factors over time). Also there is a lack of sea level and wave data to verify conditions associated with many of these floods. As shown in Fig. 3b and c, all the flood events are associated with relatively extreme wave conditions and, as indicated in Fig. 3a, are associated with high spring tides—the exception is the 1987 event which was between neaps and springs. At Gan, the highest sea level during the 15–17 May 2007 floods was a high spring tide, only ranked 751 out of 18,627 HWs from April 1987 to December 2015, whilst the highest HW during the April 1987 event is ranked 5912 in this data set. The 15–17 May 2007 sea levels are prominent within the tide gauge records at the northern gauge, Hanimaadho, where the 17 May ranks 14th (only 7 cm below the highest HW). At Gan, the highest recorded HW of 27 October 2015 is not known to have caused flooding (and was 23 cm higher than the highest HW of May 2007 and 40 cm higher than the highest HW of April 1987). None of the known flood events were associated with the largest sea level, wave height or period. As outlined by other authors, the effect of wave run-up (primarily there has been reference to the set-up component) is likely to be large relative to sea level variation. The small tides and

Wadey et al 2017 - Coastal floods in the Maldives - accepted manuscript for Natural Hazards  
 surges of the Maldives also indicate that MSL (and hence mean SLR) exerts a relatively large influence on extreme HWs. The two major flood events are now considered in detail.

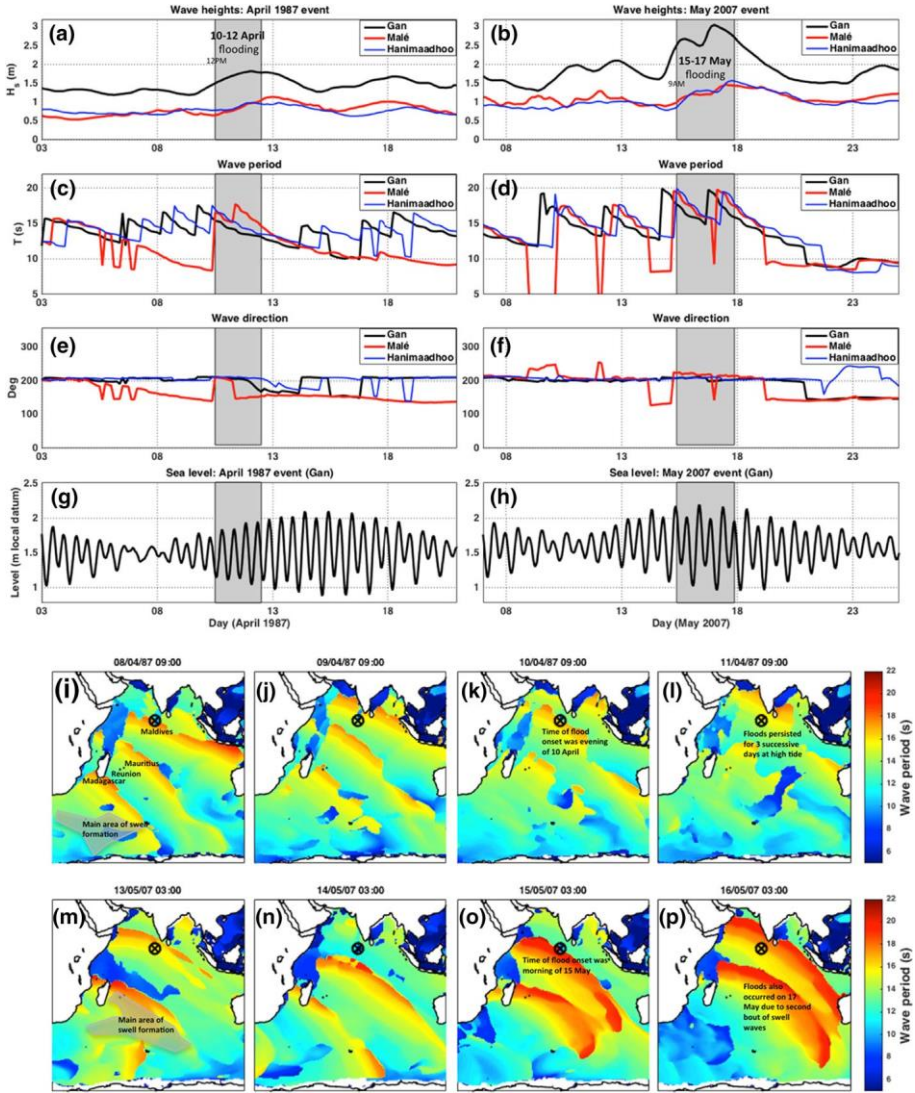


Fig. 5 a and b are the wave heights associated with the 1987 and 2007 Maldives flood events; c and d show the wave period; e and f the direction; and g and h the corresponding sea levels observed at the tide gauges (note that wave data were extracted from the WAVEWATCH III hindcast. i to l are snapshots of swell period as the waves propagated the Indian Ocean during the April 1987 floods and m to p for the May 2007 event. The observed flooding onset in each event is represented by the third snapshot from the left. The wave height extracted from the WAVEWATCH III data for the 1987 event is smaller to that noted in Harangozo (1992), which indicated that deep water  $H_s$  reached 3 m

#### 4 The April 1987 and May 2007 flood events

This section focuses upon the second objective, to assess the historic coastal flood events in the Maldives, with emphasis upon the causes and characteristics of the flood events of 10–13 April 1987 and 15–17 May 2007. These events stand out due to the volume of news they generated and the number of people affected over a widespread area. April 1987 caused more intense damages as it impacted the capital city of Malé and the airport, and 300 people. The 2007 event affected a wider

Wadey et al 2017 - Coastal floods in the Maldives - accepted manuscript for Natural Hazards area and >1600 people, but without impacts reported for the capital or airport.

Figure 4a–d shows the wave conditions (height, period, power, direction) that coincided with high waters at Gan, and the red and yellow dots highlight the 1987 and 2007 events (with the triangular markers showing other floods listed in Table 2). Figure 4e–h shows, respectively, the wave parameter peak values over a 12-h window, plotted against the coincident hourly sea level value. Dots lying further to the upper right of each plot indicate more extreme combined (wave and sea level) conditions. The April 1987 event in each case stands out less than the May 2007 event amongst the population of events. The 2007 event appears most extreme (in relation to other events) when one of the wave power peaks (of 17 May) coincided with a large sea level (Fig. 4g). These plots show that the peak of wave power was from (approx.) 200° (south-southwest) direction in both of the larger events and that there have been more powerful wave events, including the most powerful recorded being from this direction (Fig. 4h). The time series of data associated with the 1987 and 2007 events and maps of the swell are shown in Fig. 5.

During the 10–13 April 1987 event, flooding on Malé started on the evening of the 10 April, local time (Maldives is UTC + 5 h) (Harangozo 1992) and persisted for 2–3 days. The United Nations reported of this event: ‘Serious damage to the entire archipelago of the Maldives following the highest tidal waves experienced for years on 11 April 1987’ (Reliefweb 1987). A non-tidal water level anomaly in a harbour in north Malé which reached 0.15 m was associated with wave set-up further afield, and persisted until the evening of the 13 April, with flooding over three successive days at high tide (Harangozo 1992). This event is most noted for flooding of the south Malé reclaimed area and adjoining Hulhule airport (e.g. Naylor 2015). The floods reportedly impacted 300 people and 200 houses in Malé, and 16 islands in the surrounding area (Reliefweb 1987)—further detail is not readily available, only that various tourist resorts were affected as well as atolls to the south (Pernetta and Sestini 1989). There were \$6 million (about \$20 million in today’s values) damages to sea walls around the city and the airport. The event was exacerbated by reclamation on the islands which created new areas vulnerable to flooding (Edwards 1989; Pernetta 1992). The ‘Malé Land Reclamation Project’ comprised mining activities that lowered the remaining reef by half a metre and extended land closer to the edge of the Malé reef (closer to deeper water). The low-lying reclaimed land was the worst affected area, with 60 hectares of landfill inundated and approximately 300,000 m<sup>3</sup> of fill washed away by the floods (Edwards 1989). Sea walls at that time were not robust with sections missing (JICA 2001; NDA 2005).

Published literature suggests that this swell came from a storm off Australia (e.g. Harangozo 1992; McLean 2009). Other sources suggest the swell was generated between 4 and 7 April 1987 by a storm in the southern Indian Ocean, which sent long-period swell 4500 km towards the Maldives (Naylor 2015). The latter description is more in agreement with the analysis of the WAVEWATCH III data presented here (Fig. 4i–l). Swell had been propagating from the Southern Ocean for several days, but wave heights notably increased from the 10 April around Gan. Skew surges were relatively small (< 3cm) during 10–13 April (and hence are not discussed further). Wave heights assessed around the Maldives by other authors using altimetry data and hindcast methods have indicated 15–16-s wave period and deep water significant wave height ( $H_s$ ) of up to about 3 m (Goda 1988; Jensen 1991; Harangozo 1992). Nearshore breaker heights were likely to have been much larger; data and observations suggest that upon reaching Malé on April 10 the swells’ maximum height was 5 m (Harangozo 1992; Naylor 2015). The event occurred during a period between neap and spring tides (Fig. 5g). It was speculated that set-up on the south coast of Malé was around 0.6 m (Harangozo 1992) although to account for the observed flood levels, set-up may have actually reached 1.25 m, which would also have been further accompanied by transmitted and infragravity waves (Gourlay 1996). Following the 10–13 April 1987 event and its flood impacts, sea walls were built around the entire perimeter of the capital Malé and a breakwater to the south which took 14 years to construct at a cost of \$63 million, 99% paid for by aid from



The 15–17 May 2007 flood event was caused by two separate bands of long-period (swell) waves from two consecutive storms (e.g. WMO 2007; ESA 2007; McLean 2009; Samiksha et al. 2012)—as indicated in Fig. 4m. These swells were generated in a similar area of the southern Indian Ocean to the 1987 event. Intense storms south of South Africa started on the 8 May with a central pressure of 945 hPa and gale force winds (reaching speeds of 175 km/h) which extended over an area 1200 km wide (MMS 2007). In the swell generation area on 10 May 2007, wave hindcast and altimeter data indicated waves were [15 m high (Samiksha et al. 2012). The swells hit La Reunion Island on the 12 May and then the islands of Rodrigues and Mauritius (3000 km southwest of the Maldives), killing 6 people. The path of the swell around this time is shown in Fig. 4k. The waves propagated 5600 km to the Maldives where flooding is likely to have occurred on two separate days, starting during the morning of the 15 May (Fig. 4o) and also on 17 May (WMO 2007; Reuters 2007). The swells approached the archipelago from the southwest and the most severely impacted islands were those located in the west and south. After impacting the Maldives, the swell caused damage in Indonesia and Thailand (Reliefweb 2007a). Wave direction 15–17 May was 213°–225° with a persistent wave period of 18–20 s. The constancy of wave direction, height and period was highlighted for the 1987 event as an important mechanism for maintaining the set-up levels in the lagoon, which were initiated by waves breaking on the reefs (Gourlay 1996; Harangozo 1992), and appears also to have been a feature of the 2007 event. The event coincided with the middle of the spring tidal cycle (Fig. 4h). Peak  $H_s$  at Gan reached 3.05 m (at midnight 17 May). The entire island of Fares (located at the south facing rim of the Huvadhu Atoll) was flooded on 17 May 2007, and nearly one-third of Maathoda flooded as the swell ‘washed ashore in a south-westerly direction’ (LHI 2015). It was described how ‘water crept in slowly’ before receding with the tide (BBC 2004).

The data presented in the previous section indicate that many other swell events combined with high tides may have occurred since April 1987, but the adaptation following that event has so far been largely effective. The May 2007 swells flooded more places and people, likely accounted for by the longer period waves (20 s, compared to 16 s in 1987), whilst still water levels were 10–20 cm higher. The 30-day running MSL was approximately 0.1 m higher during May 2007 than during April 1987, largely accounted for by mean SLR.

## 5 Discussion

The third objective is to discuss coastal flood events and their implications, as well as recommendations for monitoring and future research.

The biggest floods of 1987 and 2007 are associated with coincidentally energetic long period, powerful waves and high sea levels (Fig. 4f, g). Both of these large events comprised prolonged swell conditions (Fig. 5), and Harangozo (1992) and Gourlay (1996) previously suggested the importance of persistent wave (direction and swell) to promoting high set-up in the lagoons. This may be due to importance to set-up levels, and/or cumulative volume of overtopped water, and beach and/or defence erosion. Long-period swell in other coastal environments is known to cause greater run-up comparable to shorter-period (locally generated) waves (Mason et al. 2008; Palmer et al. 2014); although the Maldivian coast has small tidal (and surge) sea level variations, distinguishing extreme events is complex because of the dynamics of shallow water processes. The coarse (temporal and spatial) resolution wave time series data cannot sufficiently capture wave groups or peaks attributable to more extreme set-up and infragravity waves. Set-up is linked to (tidally influenced) water depth at reefs (Gourlay 1996; Vetter et al. 2010): at other reef islands less set-up has occurred at high tide than at low tide for a given incident wave height (Becker et al. 2014), whilst (Hoeke et al. 2013) highlighted the complex (and important) interaction between tides and set-up, and implications for inundation. It has been



indicated that wave set-up at south Malé could have been 0.6–1.25 m during April 1987 (Gourlay 1996). Whilst most coastal flooding is associated with Southern Ocean swells, high tides with lesser-period waves from the opposite direction caused ‘unusual’ flooding at northeast Malé in August 2015, and the event during September 2015 (Table 2). Between the 1987 and 2007 events, the Maldives experienced a significant population growth (of [100,000 people) (Speelman 2016), and current vulnerabilities to flooding have evolved from patterns of settlement, and modifications to coastlines and land cover, to support more people, at higher living standards (Naylor 2015). Coastal engineering structures were constructed in some inhabited islands as early as the 1970s, although modern-style defences were applied in the 1990s (MHE 2011)—notably the sea walls and breakwaters protecting the capital. Recent adaptation, to reduce population pressure and provide land high enough to prevent flooding, includes construction of an artificial island named Hulhumalé (e.g. Hamilton 2008a, b). This island is situated 3 km north-west of the Malé, with dimensions 0.9 km by 2 km, and constructed to approximately 2 m above MSL. Reclamation onto the original reef flat began in 1997 and the second phase was recently completed (MNA 2014). Hulhumalé has a population of 30,000, which is projected to grow as development continues. Illustrated in Fig. 6, is that there is about 1-m difference between natural Maldivian island land levels and MSL (see Appendix 1), which can reduce to as little as 30 cm during high sea levels (such as those in late 2015), and was in the region of half a metre during the 1987 and 2007 floods. As already discussed, shallow water processes resulting from wave events interacting with the reef and foreshore can project water levels above the land height. The SLR rates presented in this paper indicate by the end of the century large high tides (without set-up or surge) will be at land level in many islands, which could occur sooner under more extreme projections of future SLR (e.g. Church et al. 2013). During this time, waves would increasingly be able to cause floods (c.f. Hoeke et al. 2013), and all inhabited islands will need to adapt, for example, building defences, land raising and relocation to higher areas to avoid regular inundation as well as more severe impacts during 2007-type swell events.

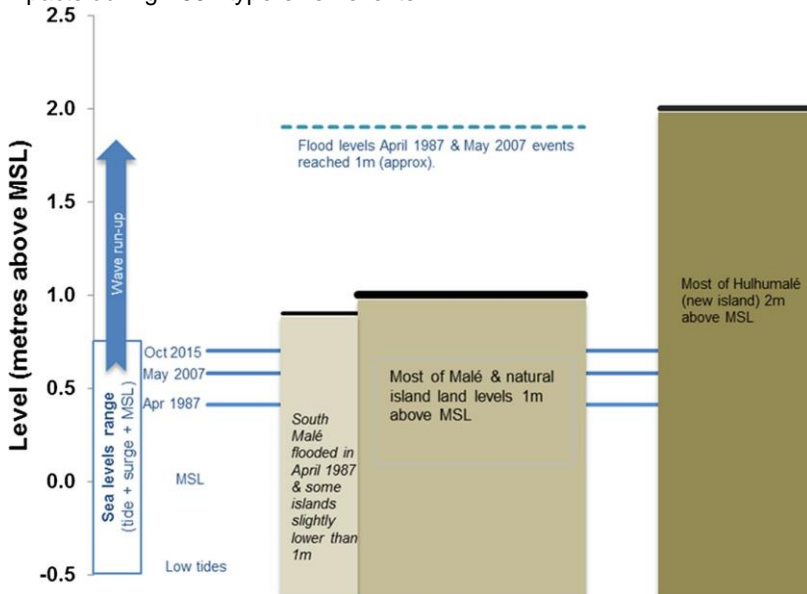


Fig. 6 Illustration of land height in relation to sea level; refer to Appendix 1 for various sources of land heights. Many of the natural islands in the Maldives are regarded as 1 m above mean sea level, which is higher than extreme sea levels caused by tides and surges, and it is the additional effects of wave run-up that can cause flooding. The Malé sea wall and artificial island of Hulhumalé are currently higher than these extreme levels

587

588

589

590

591

592

593

594

595

596

597

598

599

600

601

602

603

604

605

606

607

608

609

610

611

612

613

614

615

616

617

618

619

620

621

622

623

624

625

626

627

628

629

630

631

632

633

634

635

636

637

638

639

640

641

This paper is a first attempt to better understand coastal flooding in a remote location using freely available data (c.f. Lewis et al. 2013a). Hence, there are many potential areas of future work. To date, it seems that some islands are more susceptible to flooding than others (Shareef 2015—pers. comm.), and the reasons for this are not fully understood. A better assessment of all shallow water processes that contribute to flooding would be beneficial to account for flood risks (e.g. Lewis et al. 2013b, 2014)—there is presently a lack of simple tools to calculate run up and overtopping on coral reef coasts. Joint probability of waves and sea level occurrence in the Maldives could be applied using more sophisticated multivariate analysis methods (e.g. Wahl et al. 2012) to characterise events (e.g. by return periods), although more site- and event-specific, high- resolution analyses would be beneficial. Ideally this would include higher-resolution wave modelling, and/or numerical approaches (e.g. McCabe 2011) capable of simulating overtopping in reef-lagoon environments complemented by topographic and bathymetric data. Response of the islands and reefs to SLR (and subsequent effects on flooding) is uncertain: coral islands are well known to accrete vertically (e.g. Marshall and Jacobsen 1985; Kench et al. 2015), but there are widespread concerns that this growth will not keep pace with SLR (e.g. Woodroffe 2008), particularly given recent bleaching events. Understanding this and sediment movement could also be important for managing future risks. Changes to wave climate should be considered in future risk assessments using data such as that described by Hemer et al. (2010, 2012). WMO (2007) remarked that there was insufficient early warning for the later part of the 2007 event (on 17 May), and advice was given to install at least 3 wave buoys (hence 2 more are needed to meet this advice, in addition to a recently deployed first wave buoy in the south) to monitor ocean state in real time. Since March 2013, forecasting services have been provided by the Indian National Centre for Ocean Information Services (INCOIS) (Mallikarjun 2013). Flood warnings are issued through the Maldives Meteorological Service, and measures such as sandbags and moving items away from the coast are carried out in response (Maldives Independent 2015c). ‘High wave alerts’ are available 3 days in advance of an event and are usually issued when waves exceed 3 m (e.g. Mallikarjun 2013). The data presented in this paper imply that differentiating between annual type ‘nuisance’ flood and more severe (1987 and 2007 type) events may be challenging. Of critical importance is maintenance of the tide gauges. Ideally, the sea level observations should be augmented by land-based elevation monitoring. Systematic monitoring of flood events (Haigh et al. 2011) would also enable a better understanding of conditions that cause flooding and to identify susceptible areas.

## 6 Conclusions

This paper assessed the sources of climate-linked coastal flooding in the Maldives, primarily focusing upon recent major coastal flood events. These coastal floods appear to occur due to composite sources and pathways, with the most extreme events of April 1987 and May 2007 linked to prolonged energetic long-period swell wave action generated in the Southern Ocean. At present, the natural islands in the Maldives are unlikely to be flooded by extreme still sea level (tide + surge + mean sea level) conditions alone; nor by extreme waves occurring on a small tide. Wave set-up (a key component of wave run-up) appears to constitute a larger contribution to coastal sea levels during flood events than exceptional tides or surges. However, the magnitude of wave set-up (and run-up in general) is poorly understood in reef settings, limiting our analysis.

The evidence presented that the worst flooding and overtopping has occurred due to combinations of moderately extreme sea levels, and extreme waves differ

Wadey et al 2017 - Coastal floods in the Maldives - accepted manuscript for Natural Hazards from how flooding and inundation in the Maldives is portrayed in the wider media which stresses mean sea level rise and does not recognise the important role of waves. Extreme wave conditions appear to be an essential mechanism of coastal floods. However, given the sensitivity to the (mainly tidally) modulated still water level, the frequency and severity of wave-induced flooding in the Maldives are likely to be highly sensitive to mean sea level rise as widely assumed. Subsequently, a key recommendation is for continued monitoring of sea levels and waves, combined with research on shallow water wave processes over reefs to better understand and predict their contribution to flooding. This will provide an improved basis for prognosis, both in the short-term and for planning adaptation for sea level rise, which is essential for the Maldives.

Acknowledgements MPW, SB and RJN were funded by the European Commission's Seventh Framework Programme's collaborative project RISES-AM (contract FP7-ENV-2013-two-stage-603396). SB received funding from the European Union Seventh Framework Programme FP7/2007–2013 under Grant Agreement No. 282746 (IMPACT2C: Quantifying projected impacts under 2 C of warming). Data used in this paper and for Figs. 2, 3, 4, 5 and A1 were freely downloaded from the University of Hawaii Sea Level Centre (<http://uhslc.soest.hawaii.edu/>) and WaveWatch III data from the NOAA/National Weather Service National Centers for Environmental Prediction Environmental Modeling Center Marine Modeling and Analysis Branch (<http://polar.ncep.noaa.gov/waves/download.shtml>).

## Appendix 1: Selection of sources on land height in the Maldives

- BBC (2004): '80% of its [the Maldives] 1200 islands are no more than 1 m above sea level'
- Pernetta (1992): 'The highest point on Male is "just over" 2 m above sea level; over 85% of the original land area is \1 m above SL. No island stands more than 3 m above mean sea level and most are less than 1 m high'.
- Harangozo (1992): The islands are 'mostly lying less than 2 m above MSL' and that during 1987 and 1988 experienced floods of up to 1 m in places.
- Woodworth (2005): 'The islands have typical elevations of only 1–2 m above MSL'
- Titus (1989): Male is 'generally about 2 m above sea level, although some of the reclaimed areas are somewhat lower'. Maldives: 'virtually the entire nation is within 4 m of sea level'.
- Kench et al. (2015): 'The maximum natural land levels approach 6 m above mean sea level (MSL) in places; the mean elevation of land is approximately 1 m above MSL'.
- Khan et al. (2002): 'Male: 85% total land area is B1 m above SL (including most reclaimed land), max height \*2 m. Maldives: 80% of the land area \1 m, max height above sea level \*3 m'.
- Evans (2013): Average height of the Maldives is 4 ft above sea level; the highest point (entire nation) is 8 ft (2.4 m).
- Wikipedia: 'With an average ground-level elevation of 1.5 m above sea level, it is the planet's lowest country. It is also the country with the lowest natural highest point in the world, at 2.4 m'.
- Henley (2008): This is the citation used within the Wikipedia post, and actually states: 'nowhere on the Maldives does the natural ground level exceed 2.3 m. Most of its land mass, which totals roughly one-fifth of Greater London, is a great deal lower than that, averaging around 1.5 m'.
- UTNE (2011): 'Our islands are on average just 1.5 m above the ocean'. UCS (2010): '80% of the Maldives are less than 1 m above sea level'.
- DIRAM Team and UNDP Maldives (2007): Some islands (e.g. Viligilli which is south of Gan) are as low as 0.7 m above MSL, whilst others (e.g. Kulhudhuffushi: a northern island with 7000 inhabitants) have average elevations of 1.4 m above MSL, and with 2.5 m above MSL natural ridges. Most islands appear to be around 1 m above MSL.

## Appendix 2: Methodology for wave power calculations

It is well known that wave set-up on the reef top increases with the off-reef wave power  $P_0$  (or energy flux) (e.g. Munk and Sargent, 1954). This can be expressed as follows:

$$P_0 = \frac{\rho g^2}{32\pi} H_o^2 T \quad (1)$$

See Figs. 7, 8, 9.

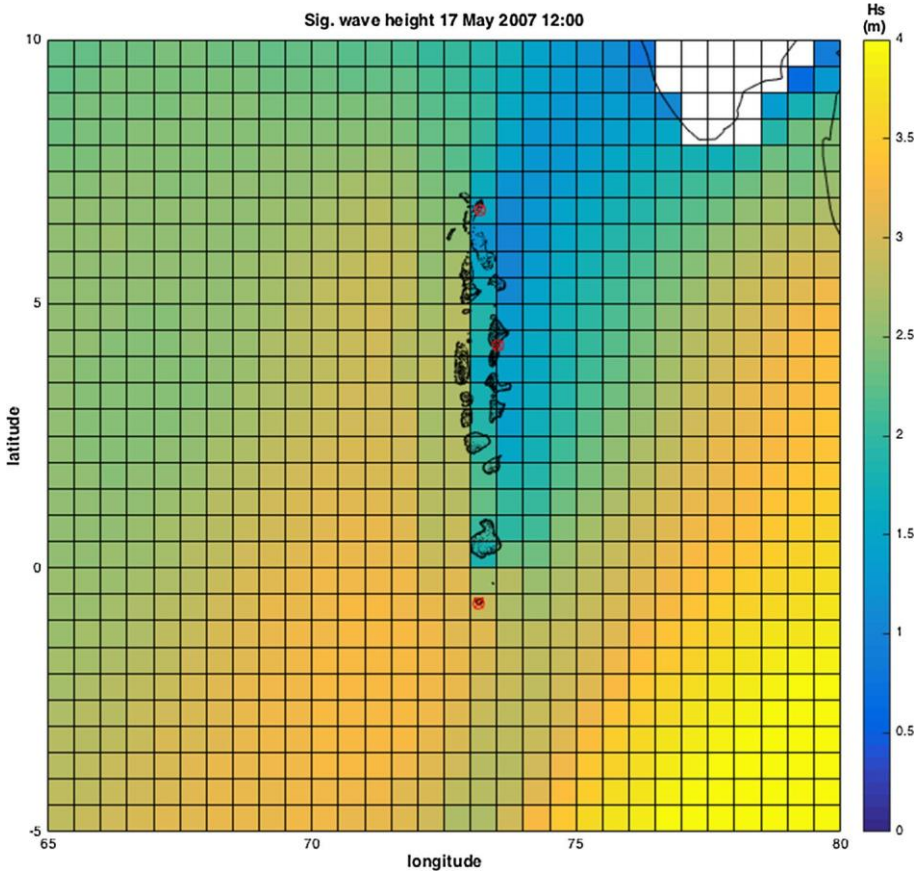
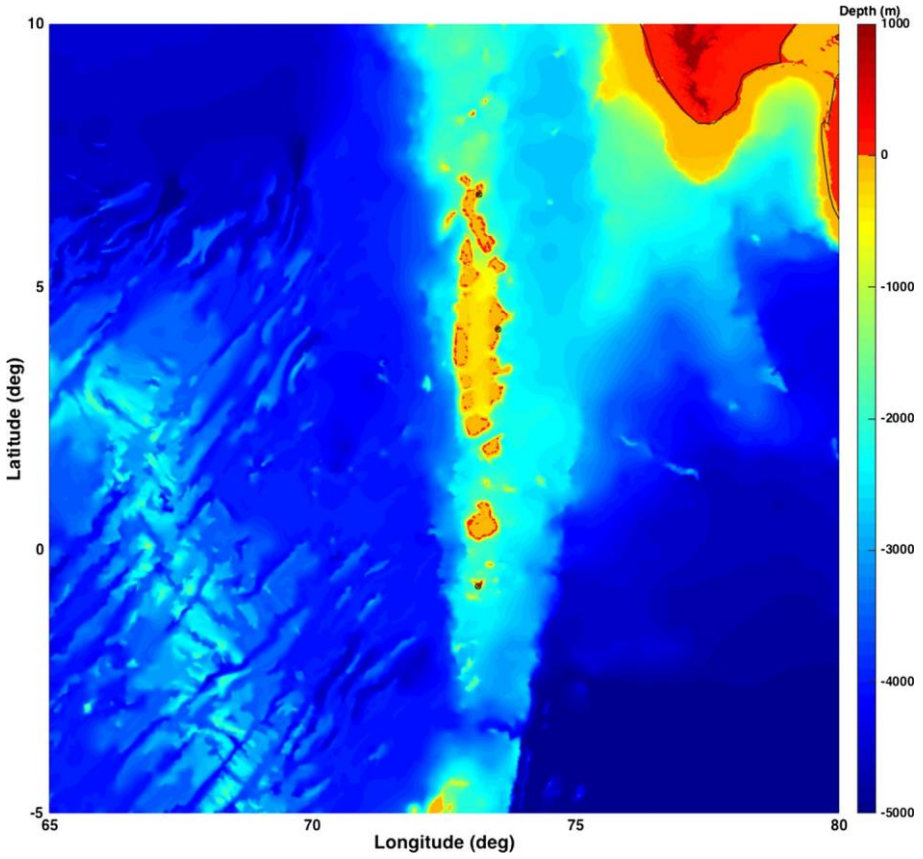


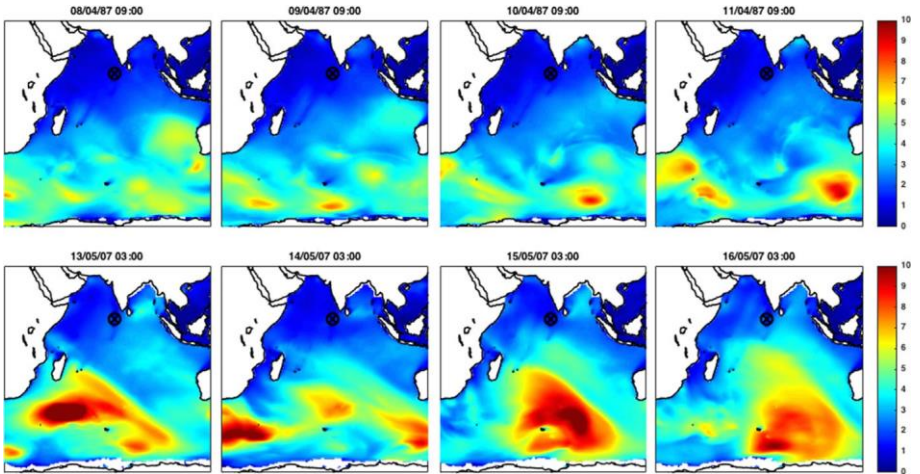
Fig. 7 Tide gauge locations (*red markers*) for which wave time series were extracted from WaveWatch III. Example image is given for significant wave heights during the 17 May 2007 event

708  
709



710  
712  
713  
714

Fig. 8 Bathymetry around the Maldives and location of the tide gauge locations (*black dot markers*) (plotted from GEBCO08 grid: <http://www.gebco.net/>)



715  
716  
717  
718

Fig. 9 Significant wave heights (in metres) in the Indian Ocean prior to and during the April 1987 and May 2007 flood events (wave period is plotted in Fig. 4 to indicate the path of the swells)

719

## 720 References

721

- 722 ADRC (2005) Report on the assessment of early warning systems in the Maldives. Asian Disaster Reduction Centre.  
 723 Report produced in August 2005. [http://www.preventionweb.net/](http://www.preventionweb.net/8_14228Assessmentof)  
 724 EWSinMaldivesfi .pdf. Last Accessed 18 May 2015
- 725 BBC (2004) Maldives: paradise soon to be lost. By Nick Bryant Wednesday, 28 July 2004, 16:03 GMT.  
 726 [http://news.bbc.co.uk/1/hi/world/south\\_asia/3930765.stm](http://news.bbc.co.uk/1/hi/world/south_asia/3930765.stm). Accessed 7 Jan 2016
- 727 Becker JM, Merrifield MA, Ford M (2014) Water level effects on breaking wave setup for Pacific Island fringing reefs. *J*  
 728 *Geophys Res Oceans* 119:914–935. doi:10.1002/2013JC009373
- 729 Betzold C (2015) Adapting to climate change in small island developing states. *Clim Chang* 201(133):481–489.  
 730 doi:10.1007/s10584-015-1408-0
- 731 Church JA, White NJ, Hunter JR (2006) Sea-level rise at tropical Pacific and Indian Ocean islands. *Global Planet Chang*  
 732 53:155–168
- 733 Church JA, Clark PU, Cazenave A, Gregory JM, Jevrejeva S, Levermann A, Merrifield MA, Milne GA, Nerem RS,  
 734 Nunn PD, Payne AJ, Pfeffer WT, Stammer D, Unnikrishnan AS (2013) Sea level change. *Climate change 2013:*  
 735 *the physical science basis. Contribution of working group i to the fifth assessment report of the intergovernmental*  
 736 *panel on climate change.* In: Stocker TF, Qin D, Plattner G-K, Tignor M, Allen SK, Boschung J, Nauels A, Xia  
 737 Y, Bex V, Midgley PM (eds.) Cambridge University Press, Cambridge
- 738 de Vries H, Breton M, de Mulder T, Krestenitis Y, Ozer J, Proctor R, Ruddick K, Salomon JC, Voorrips A (1995) A  
 739 comparison of 2D storm surge models applied to three shallow European seas. *Environ Softw* 10:23–42
- 740 Dean B, Collins I, Divoky D, Hatheway D, Scheffner N (2005) Wave setup: FEMA coastal flood hazard analysis and  
 741 mapping guidelines-focused study report. [http://www.fema.gov/media-library-data/](http://www.fema.gov/media-library-data/20130726-1541-20490-1234/fm_p1wave1.pdf)  
 742 20130726-1541-20490-1234/fm\_p1wave1.pdf Accessed 7 January 2016
- 743 DIRAM Team and UNDP Maldives (2007) Detailed Island risk assessment in Maldives: hazards & physical vulnerability  
 744 (DIRAM 1). <http://planning.gov.mv/en/content/view/306/93/>. Accessed 24 Jul 2015
- 745 Edwards AJ (1989) The implications of sea-level rise for the future of the Republic of Maldives: report to the  
 746 commonwealth expert group on climate change and sea level rise. Centre for Tropical Coastal Management  
 747 Studies, Newcastle upon Tyne
- 748 Egbert GD, Erofeeva SY (2002) Efficient inverse modeling of barotropic ocean tides. *J Atmos Ocean Technol*  
 749 19(2):183–204
- 750 ESA (2007) Huge waves that hit Reunion Island tracked from space. European Space Agency—Envisat.  
 751 Press release 16 May 2007. [http://www.esa.int/Observing\\_the\\_Earth](http://www.esa.int/Observing_the_Earth). Accessed 11 Feb 2016
- 752 Evans (2013) Climbing the highest point in the Maldives. National geographic traveler. Posted 5 November 2013.  
 753 <http://digitalnomad.nationalgeographic.com/2013/11/05/climbing-the-highest-point-in-the-maldives/>.  
 754 Accessed 16 Sep 2016
- 755 Fritz HM, Synolakis CE, McAdoo BG (2006) Maldives field survey after the December 2004 Indian Ocean Tsunami.  
 756 *Earthq Spectra* 22(S3):137–154
- 757 Gerritsen F (1981) Wave attenuation and wave set-up on a coastal reef. In: Proceedings of the 17th  
 758 international conference on coastal engineering. ASCE, pp 444–461
- 759 Goda Y (1988) Cause of high waves at Male in April 1987. Unpublished manuscript, 5 pp
- 760 Gourlay MR (1996) Wave set-up on coral reefs. 2. Set-up on reefs with various profiles. *Coast Eng* 28(1):17–55
- 761 Guza RT, Thornton EB (1985) Observations of surf beat. *J Geophys Res Ocean* 90(C2):3161–3172
- 762 Haigh ID, Eliot M, Pattiaratchi C (2011) Global influences of the 18.61 year nodal cycle and 8.85 year cycle of lunar  
 763 perigee on high tidal levels. *J Geophys Res Ocean* 116(C6):C06025
- 764 Hamilton J (2008) Maldives builds barriers to global warming. Report dated January 28, 2008 1:25 AM ET.  
 765 <http://www.npr.org/templates/story/story.php?storyId=18425626>. Accessed 16 Sep 2016
- 766 Hamilton J (2008) Maldives builds barriers to global warming. Report by Jon Hamilton, produced by Jane Greenhalgh  
 767 for NPR. January 28, 2008 1:25 AM ET. <http://www.npr.org/templates/story/story.php?storyId=18425626>. Last  
 768 Accessed 19 May 2015
- 769 Han W, Meehl GA, Rajagopalan B, Fasullo JT, Hu A, Lin J, Large WG, Wang JW, Quan XW, Trenary LL, Wallcraft A  
 770 (2010) Patterns of Indian Ocean sea-level change in a warming climate. *Nat Geosci* 3(8):546–550
- 771 Harangozo SA (1992) Flooding in the Maldives and its implications for the global sea level rise debate. In: *Sea level*  
 772 *changes: determination and effects, geophysical monograph* 69. IUGG, vol 11, pp 95–100 Hemer MA, Wang XL,  
 773 Church JA, Swail VR (2010) Coordinated global ocean wave projections. *Bull Am*  
 774 *Meteor Soc* 91(4):451–454. doi:10.1175/2009BAMS2951.1
- 775 Hemer MA, Wang XL, Weisse R, Swail VR (2012) Community advancing wind-waves climate science: the COWCLIP  
 776 project. *Bull Am Meteor Soc* 93(6):791–796. doi:10.1175/BAMS-D-11-00184.1
- 777 Henley J (2008) The last days of paradise. Article in the Guardian, 11 November 2008. <https://www.theguardian.com/environment/2008/nov/11/climatechange-endangered-habitats-maldives>. Accessed 16 Sep  
 778 2016
- 779 Hinkel J, Lincke D, Vafeidis AT, Perrette M, Nicholls RJ, Tol RS, Marzeion B, Fettweis X, Ionescu C, Levermann A  
 780 (2014) Coastal flood damage and adaptation costs under 21st century sea-level rise. *Proc Natl Acad Sci* 111:3292–  
 781 3297. doi:10.1073/pnas.1222469111
- 782 Hoeke RK, McInnes KL, Kruger JC, McNaught RJ, Hunter JR, Smithers SG (2013) Widespread inundation of Pacific  
 783 islands triggered by distant-source wind-waves. *Global Planet Chang* 108:128–138
- 784 Hoeke RK, McInnes KL, O’Grady JC (2015) Wind and wave setup contributions to extreme sea levels at a tropical high  
 785 Island: a stochastic cyclone simulation study for Apia, Samoa. *J Mar Sci Eng* 2015(3):1117–1135
- 786 Holden J (ed) (2008) *Physical geography and the environment*, 2nd edn. Prentice Hall, Harlow
- 787 Horsburgh KJ, Wilson C (2007) Tide-surge interaction and its role in the distribution of surge residuals in the North  
 788 Sea. *J Geophys Res* 112:1–13
- 789 Jameel A (2007) A model to integrate the management of hazards and disasters in the national sustainable  
 790 development planning of the Maldives. University of Canterbury, unpublished MSc thesis. <http://ir>.

791

Jensen O (1991) Waves on coral reefs. In: Proceedings of the 7th symposium. Coastal and ocean management-coastal zone 1991, Long Beach. ASCE, New York, vol 3, pp 2668–2680

JICA (2001) The project for the seawall construction in male' Island (Phase II). Jpn Int Cooper Agency. [http://www.jica.go.jp/english/our\\_work/evaluation/reports/2001/pdf/2001\\_1212e.pdf](http://www.jica.go.jp/english/our_work/evaluation/reports/2001/pdf/2001_1212e.pdf). Accessed 19

May 2007

Kench PS, Brander RW (2006) Response of reef island shorelines to seasonal climate oscillations: South Maalhosmadulu atoll, Maldives. *J Geophys Res* 111:F01001. doi:10.1029/2005JF000323

Kench PS, Parnell KE, Brander RW (2003) A process based assessment of engineered structures on reef islands of the Maldives. In: Kench PS, Hume TM (eds.) Proceedings, coasts and ports australasian conference 2003: Auckland, coasts and ports australasian conference organising committee paper 74 Kench PS, Thompson D, Ford MR, Ogawa H, McLean RF (2015) Coral islands defy sea-level rise over the

past century: records from a central Pacific atoll. *Geology*. doi:10.1130/G36555.1

Khan TMA, Quadir DA, Murty TS, Kabir A, Aktar F, Sarker MA (2002) Relative sea level changes in Maldives and vulnerability of land due to abnormal coastal inundation. *Mar Geodesy* 25(1–2):133–143

Kron W (2013) Coasts: the high-risk areas of the world. *Nat Hazards* 66(3):1363–1382

Lewis M, Bates P, Horsburgh K, Neal J, Schumann G (2013a) A storm surge inundation model of the northern Bay of Bengal using publicly available data. *Q J R Meteorol Soc* 139(671):358–369

Lewis M, Schumann G, Bates P, Horsburgh K (2013b) Understanding the variability of an extreme storm tide along a coastline. *Estuar Coast Shelf Sci* 123:19–25

Lewis M, Horsburgh K, Bates P (2014) Bay of Bengal cyclone extreme water level estimate uncertainty. *Nat Hazards* 72(2):983–996

LHI (2015) Fares Maathoda—Maldives—project description. <http://www.lhi.lk/portfolio/fares-maathoda-maldives>. Accessed 16 Sep 2016

Lichter M, Vafeidis AT, Nicholls RJ, Kaiser G (2010) Exploring data-related uncertainties in analyses of land area and population in the “Low-Elevation Coastal Zone” (LECZ). *J Coastal Res* 27(4):757–768 Longuet-Higgins MS, Stewart RW (1964) Radiation stresses in water waves; a physical discussion, with

applications. *Deep Sea Res Oceanogr Abstr* 11:529–562

Maldives Independent (2015a) Malé hit by tidal swells, report 13 August 2015 by Shafaa Hameed. <http://maldivesindependent.com/environment/male-hit-by-tidal-swells-116375>. Accessed 11 Jan 2016

Maldives Independent (2015b) Tidal swells not as bad as predicted, report 30 September 2015 by Mohamed Saif Fathih. <http://maldivesindependent.com/environment/tidal-swells-not-as-bad-as-predicted-117815>. Accessed 15 Sep 2016

Maldives Independent (2015c) Two northern islands hit by tidal swells, report 28 December 2015 by Shafaa Hameed. <http://maldivesindependent.com/environment/two-northern-islands-hit-by-tidal-swells-121016>. Accessed 15 Sep 2016

Mallikarjun Y (2013) Maldives gains from ocean state forecast. *The Hindu*, March 28, 2013. <http://www.thehindu.com/sci-tech/science/maldives-gains-from-ocean-state-forecast/article4554846.ece>. Accessed 15 Sep 2016

Marshall JF, Jacobson G (1985) Holocene growth of a mid-Pacific atoll: Tarawa, Kiribati. *Coral Reefs* 4(1):11–17

Mason T, Bradbury A, Poate T, Newman R (2008) Nearshore wave climate of the English Channel evidence for bimodal seas. In: Proceedings of the 31st International Conference on Coastal Engineering, USA. American Society of Civil Engineers, New York, pp 605–616

McCabe M (2011) Modelling nearshore waves, runup and overtopping. PhD thesis, University of Manchester

McLean R (2009) Impacts of weather, climate and sea level-related extremes on coastal systems and low-lying islands. IPCC Working Group II Scoping Meeting: Possible Special Report on “Extreme Events and Distasters: Managing the Risks”. Oslo, Norway 23–26 March 2009. [https://www.ipcc-wg2.gov/AR5-tools/extremes-sr/ScopingMeeting/abstracts/McLean\\_Abstract.pdf](https://www.ipcc-wg2.gov/AR5-tools/extremes-sr/ScopingMeeting/abstracts/McLean_Abstract.pdf). Accessed 7 Jan 2016

MHE (2011) Survey of climate change adaptation measures in Maldives. Final Report Version 2, January 2011. Ministry of Housing and Environment: Integration of Climate Change Risks into Resilient Island Planning in the Maldives Project. <http://www.globalislands.net/userfiles/Maldives12.pdf>. Accessed 19 May 2015

MMS (2007) Raz de Maré on 12/13 May 2007 affecting the South Western coasts of Mauritius. Report by the Mauritius Meteorological Services, 31 May 2007

MNA (2014) Bank of Ceylon to provide loans for reclaiming land in Hulhumalé, Minivan News—Archive. [http://minivannewsarchive.com/news-in-brief/bank-of-ceylon-to-provide-loans-for-reclaiming-land-in-](http://minivannewsarchive.com/news-in-brief/bank-of-ceylon-to-provide-loans-for-reclaiming-land-in-hulhumale-90002)

hulhumale-90002

Munk W, Sargent M (1948) Adjustment of Bikini Atoll to waves. *Trans Am Geophys Union* 29(6):855–860 Munk WH, Miller G, Snodgrass F, Barber N (1963) Directional recording of swell from distant storms. *Philos Trans R Soc Lond B Biol Sci* 255:505–584

Naylor AK (2015) Island morphology, reef resources, and development paths in the Maldives. *Prog Phys Geogr* 39(6):728–749

NDA (2005) Numerical simulation for Male', Hulhule and Hulhumalé'. Chapter 4 in “Preliminary Report on the Survey Results of 26/12/2004 Indian Ocean Tsunami in the Maldives”. National Defense Academy of Japan, Ryosei Kokubun. April 2005. <http://www.nda.ac.jp/~fujima/maldives-pdf/contents/chapter4.pdf>. Last Accessed 19 May 2015

Neumann B, Vafeidis AT, Zimmermann J, Nicholls RJ (2015) Future coastal population growth and exposure to sea-level rise and coastal flooding—a global assessment. *PLoS ONE* 10(3):e0118571. doi:10.1371/journal.pone.0118571

Nicholls RJ (2004) Coastal flooding and wetland loss in the 21st century: changes under the SRES climate and socio-economic scenarios. *Glob Environ Change* 14:69–86. doi:10.1016/j.gloenvcha.2003.10.007 Nicholls RJ, Lowe JA (2004) Benefits of mitigation of climate change for coastal areas. *Glob Environ Chang*

14(3):229–244

Nicholls RJ, Tol RSJ (2006) Impacts and responses to sea level rise: a global analysis of the SRES scenarios over the twenty-first century. *Philos Trans R Soc* 364:1073–1095. doi:10.1098/rsta.2006.1754

Nicholls RJ, Hoozemans FMJ, Marchand M (1999) Increasing flood risk and wetland losses due to global sea-level rise: regional and global analyses. *Glob Environ Change* 9:S69–S87. doi:10.1016/S0959-3780(99)00019-9



66 Nurse LA, McLean RF, Agard J, Briguglio LP, Duvat-Magnan V, Pelesikoti N, Tompkins E, Webb A (2014) Small  
67 Islands. In: Climate change 2014: impacts, adaptation, and vulnerability. Part B: regional aspects. contribution of  
68 working group II to the fifth assessment report of the intergovernmental panel on climate change. In: Barros VR,  
69 Field CB, Dokken DJ, Mastrandrea MD, Mach KJ, Bilir TE, Chatterjee M, Ebi KL, Estrada YO, Genova RC,  
70 Cirra B, Kissel ES, Levy AN, MacCracken S, Mastrandrea PR, White LL (eds.). Cambridge University Press,  
71 Cambridge, pp 1613–1654

72 Palmer T, Nicholls RJ, Wells NC, Saulter A, Mason T (2014) Identification of 'energetic' swell waves in a tidal strait.  
73 Cont Shelf Res 88:203–215. doi:10.1016/j.csr.2014.08.004

74 Pawlowicz R, Beardley B, Lentz S (2002) Classical tidal harmonic analysis including error estimates in MATLAB  
75 using T\_TIDE. Comput Geosci 28(8):929–937

76 Pernetta JC (1992) Impacts of climate change and sea-level rise on small island states: national and  
77 international responses. Glob Environ Change 2(1):19–31

78 Pernetta JC, Sestini G (1989) The Maldives and the impact of expected climatic changes (No. 104). UNEP Pugh DT  
79 (2004) Tides, surges and mean sea-Level. A handbook for engineers and scientists. Wiley,  
80 Chichester

81 Quataert E, Storlazzi C, Rooijen A, Cheriton O, Dongeren A (2015) The influence of coral reefs and climate change on  
82 wave-driven flooding of tropical coastlines. Geophys Res Lett 42(15):6407–6415

83 Reliefweb (1987) Maldives–tidal waves Apr 1987 UNDR0 Situation Reports 1-3. Report from UN Department of  
84 Humanitarian Affairs. Published on 13 Apr 1987. [http://reliefweb.int/report/maldives/ maldives-tidal-waves-apr-1987-undro-situation-reports-1-3](http://reliefweb.int/report/maldives/maldives-tidal-waves-apr-1987-undro-situation-reports-1-3). Accessed 15 Sep 2016

85

86 Reliefweb (2007a) Asian beaches reopen after winds trigger huge waves. Report from Reuters–Thomson Reuters  
87 Foundation. Published 21 May 2007. [http://reliefweb.int/report/indonesia/asian-beaches-  
88 reopen-after-winds-  
89 trigger-huge-waves](http://reliefweb.int/report/indonesia/asian-beaches-reopen-after-winds-trigger-huge-waves). Accessed 15 Sep 2016

90 Reliefweb (2007b) United Nations aids Maldives after flooding. Report from UN Office for the Coordination of Humanitarian  
91 Affairs. Published 22 May 2007. [http://reliefweb.int/report/maldives/united-nations-  
92 aids-maldives-after-flooding](http://reliefweb.int/report/maldives/united-nations-aids-maldives-after-flooding).  
93 Accessed 15 Sep 2016

94 Reliefweb (2007c) Maldives: coastal floods–information bulletin no 1. Report from the international federation of red  
95 cross and red crescent societies. Published 25 May 2007. [http://reliefweb.int/report/  
96 maldives/maldives-coastal-  
97 floods-information-bulletin-n-1](http://reliefweb.int/report/maldives/maldives-coastal-floods-information-bulletin-n-1). Accessed 15 Sep 2016

98 Reuters (2007) Storm surge swamps low-lying Maldives islands | Report by Simon Gardner. Wednesday May 16,  
99 2007 12:09am IST. <http://in.reuters.com/article/2007/05/15/maldives-fl69200>  
100 70515. Accessed 17 Aug 2015

101 Richmond B, Gibbons H (2005) Assessing Tsunami impacts in the Republic of Maldives. United States Geological  
102 Survey. <http://soundwaves.usgs.gov/2005/04/fieldwork3.html>. Accessed 1 Aug 2016

103 Sabique L, Annapurnaiah K, Nair TB, Srinivas K (2012) Contribution of Southern Indian Ocean swells on the wave  
104 heights in the Northern Indian Ocean—A modeling study. Ocean Eng 43:113–120

105 Sadoff CW, Hall JW, Grey D, Aerts JCJH, Ait-Kadi M, Brown C, Cox A, Dadson S, Garrick D, Kelman J, McCormick P,  
106 Ringle C, Rosegrant M, Whittington D, Wiberg D (2015) Securing water, sustaining growth: report of the  
107 GWP/OECD task force on water security and sustainable growth. University of Oxford, Oxford, p 180

108 Samiksha SV, Vethamony P, Aboobacker VM, Rashmi R (2012) Propagation of Atlantic ocean swells in the north Indian  
109 ocean: a case study. Nat Hazards Earth Syst Sci 12(3605–3615):2012

110 Shareef A (2015) pers. comm. Meeting in Paris 29/11/15 with Maldivian Ministry of Environment and Energy

111 Speelman (2016) Empirical analyses of migration in small islands: the role of Environmental and social factors. PhD  
112 thesis, University of Southampton

113 Tegart WJM, Sheldon GW, Griffiths DC (eds) (1990) Climate change: the IPCC impacts assessment.  
114 Cambridge University Press, Cambridge

115 Titus JG (1989) Policy implications of sea level rise: the case of the Maldives. November 14–18, 1989. In: Proceedings  
116 of the small states conference on sea level rise. Malé, Republic of Maldives. Edited by Hussein Shihab.  
117 [http://papers.risingsea.net/Maldives/Small\\_Island\\_States\\_3.html](http://papers.risingsea.net/Maldives/Small_Island_States_3.html). Accessed 22 May 2015

118 Tolman H (2002) Validation of WAVEWATCH III version 1.15 for a global domain. Technical Note, 213, 33

119 Tolman HL (2009) User manual and system documentation of WAVEWATCH III TM version 3.14. Technical  
120 note, MMAB Contribution, 276. [http://nopp.ncep.noaa.gov/mmab/papers/tn276/MMAB\\_  
121 276.pdf](http://nopp.ncep.noaa.gov/mmab/papers/tn276/MMAB_276.pdf). Accessed 20  
122 Jul 2015

123 UCS (2010) Climate Hotmap—global warming effects from around the world: Republic of Maldives. Union of concerned  
124 scientists. [http://www.climatehotmap.org/global-warming-locations/republic-of-maldiv  
125 es.html](http://www.climatehotmap.org/global-warming-locations/republic-of-maldives.html). Accesed 16  
126 September 2016

127 United Nations (2015) Adoption of the Paris agreement—proposal by the President: Draft decision-/CP.21. Paris, 30  
128 November to 11 December 2015. <https://unfccc.int/resource/docs/2015/cop21/eng/l09r01.pdf>.  
129 Accessed 14 Sep 2016

130 UTNE (2011) President of Maldives keeps his head above water. Interview/report on: 6/1/2011 4:11:12 PM by Mary Hoff.  
131 [http://www.utne.com/environment/president-of-maldives-keeps-his-head-above-water.  
132 aspx](http://www.utne.com/environment/president-of-maldives-keeps-his-head-above-water.aspx). Accessed 24 Jul  
133 2015

134 Vetter O, Becker JM, Merrifield MA, Pequignet AC, Aucan J, Boc SJ, Pollock CE (2010) Wave setup over a Pacific Island  
135 fringing reef. J Geophys Res Ocean 115(C12):C12066

136 Wahl TL, Muddersbach C, Jensen J (2012) Assessing the hydrodynamic boundary conditions for risk analyses in  
137 coastal areas: a multivariate statistical approach based on Copula functions. Nat Hazards Earth Syst Sci 12:495–  
138 510

139 WMO (1998) World Meteorological Organization—guide to wave analysis and forecasting. 2nd (edn), WMO Report  
140 No. 702. [https://www.wmo.int/pages/prog/amp/mmop/documents/WMO%20No%  
141 20702/WMO702.pdf](https://www.wmo.int/pages/prog/amp/mmop/documents/WMO%20No%20702/WMO702.pdf). Accessed  
142 24 Jul 2015

143 WMO (2007) Press release: WMO offers immediate meteorological assistance to Maldives in wake of flooding by  
144 huge waves. The World Meteorological Organization: [http://www.meteo.md/prensa/01\\_  
145 06\\_07.htm](http://www.meteo.md/prensa/01_06_07.htm). Last  
146 Accessed 15 Dec 2015

147 Woodroffe CD (2005) Late Quaternary sea-level highstands in the central and eastern Indian Ocean: a review.  
148 Glob Planet Chang 49(1):121–138



- 941 Woodroffe CD (2008) Reef-island topography and the vulnerability of atolls to sea-level rise. *Global Planet Chang*  
942 62(1):77–96
- 943 Woodworth PL (2005) Have there been large recent sea-level changes in the Maldivian Islands? *Global Planet Chang*  
944 49(1):1–18
- 945 World Bank (2015). Population growth (annual %). [http://data.worldbank.org/indicator/SP.POP.GROW/](http://data.worldbank.org/indicator/SP.POP.GROW/countries/MV?display=graph)  
946 [countries/MV?display=graph](http://data.worldbank.org/indicator/SP.POP.GROW/countries/MV?display=graph). Accessed 15 May 2015