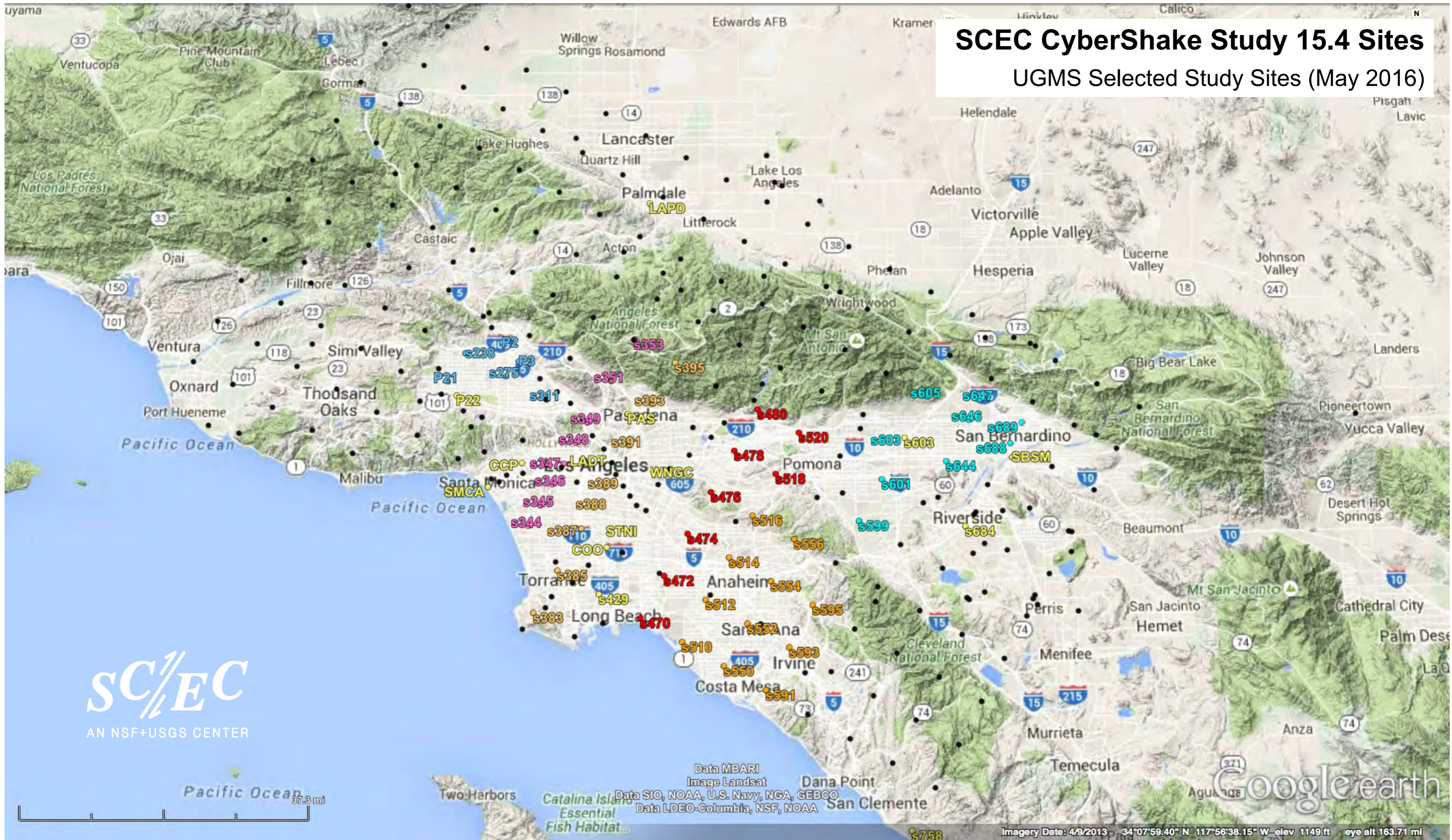


# SCEC CyberShake Study 15.4 Sites

UGMS Selected Study Sites (May 2016)



**SCEC**  
AN NSF+USGS CENTER

Google earth

Imagery Date: 4/9/2013 34°07'59.40" N 117°56'38.15" W elev 1149 ft eye alt 163.71 mi

Northridge Seismic Stations (orange)  
UGMS Selected Study Sites (aqua)



SC/EC  
AN NSF+USGS CENTER

25.2 mi

Data USGS  
Data LDEO-Columbia, NSF, NOAA  
Image Landsat  
Data SIO, NOAA, U.S. Navy, NGA, GEBCO

Google earth

34°37'02.24" N 119°00'11.26" W elev 5592 ft eye alt 111.79 mi