

UConn / UConn Health Guidance on Using Artificial Intelligence (AI)

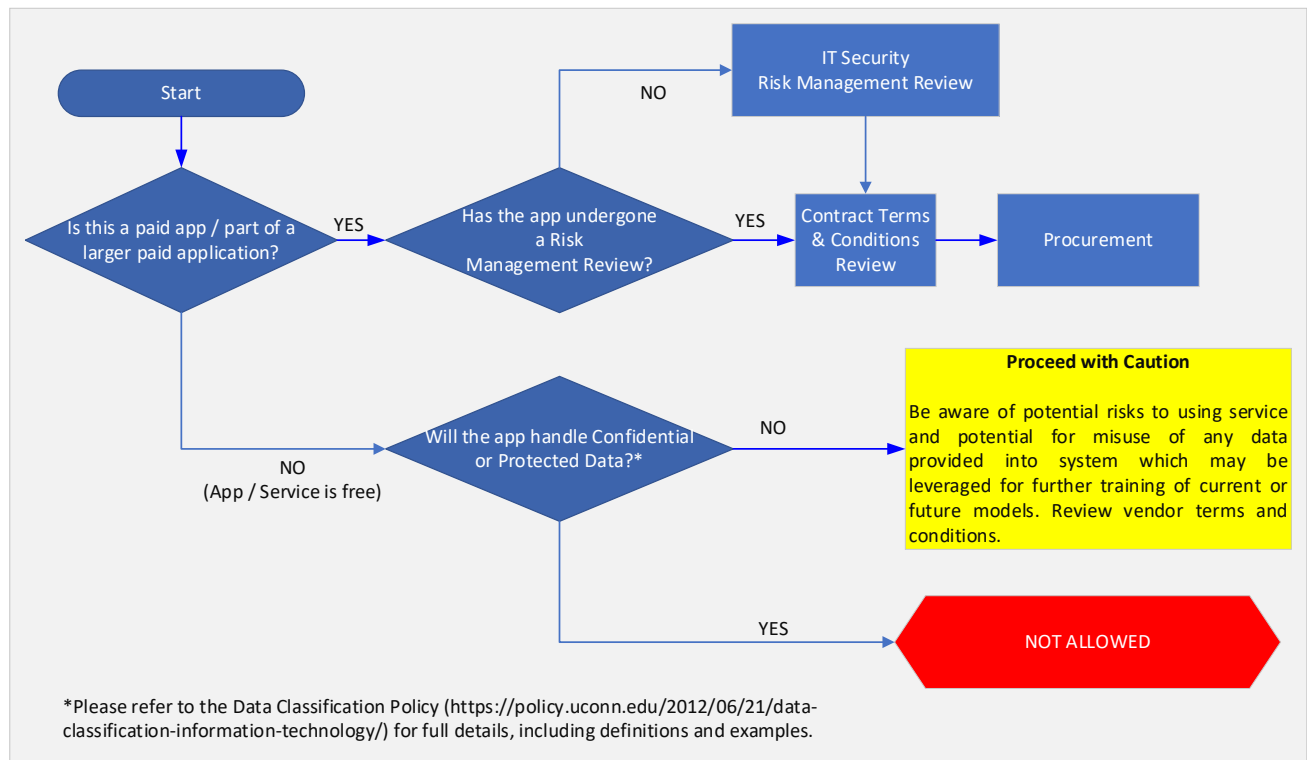
Artificial Intelligence (AI) is spreading rapidly. It is very dynamic and evolving very quickly. UConn and UConn Health recognize the potential of AI in improving outcomes in healthcare, research, and education. However, we also acknowledge the ethical, legal, and social implications of AI.

UConn and UConn Health are committed to using AI responsibly, transparently, and ethically across its domains. This communication is intended to provide guidance on using AI at UConn and UConn Health and the resources available to our staff, faculty, and students.

What is Artificial Intelligence (AI)? AI is the simulation of human intelligence by machines, especially the digital computer. AI refers to the field of study that combines the computer and data sciences, and includes the subsets of machine learning, and deep learning.

AI has recently been popularized by OpenAI's ChatGPT, a model trained to interact in a human-like conversational way, answer questions, and assist with tasks such as writing and creating computer code.

Can I use AI at UConn Health? This will depend on the AI application and context in which it will be used. The decision tree below provides basic guidance.



Who do I contact if I have questions?

Donald Babcock (UConn) | Interim Chief Information Security Officer | donald.babcock@uconn.edu
David Wallace (UConn Health) | AVP for IT Security | dwallace@uchc.edu

Resources:

- (1) [Seminal Whitepaper on ChaptGPT by UNESCO](#) (pdf)
- (2) [Student and Faculty should refer to the guidance published by UConn-Storrs's CETL](#)