

AUTOMATIC BUILDING EXTRACTION FROM LIDAR DATA COVERING COMPLEX URBAN SCENES

Mohammad Awrangjeb^{a, *}, Guojun Lu^a and Clive S. Fraser^b

^a School of Information Technology, Federation University - Australia
Churchill Vic 3842 Australia - (Mohammad.Awrangjeb, Guojun.Lu)@federation.edu.au

^b CRC for Spatial Information, Dept. of Infrastructure Engineering, University of Melbourne
Parkville Vic 3010, Australia - c.fraser@unimelb.edu.au

Commission IIIWG III/4

KEY WORDS: LIDAR, point cloud, segmentation, building, detection, roof, plane, extraction.

ABSTRACT:

This paper presents a new method for segmentation of LIDAR point cloud data for automatic building extraction. Using the ground height from a DEM (Digital Elevation Model), the non-ground points (mainly buildings and trees) are separated from the ground points. Points on walls are removed from the set of non-ground points by applying the following two approaches: If a plane fitted at a point and its neighbourhood is perpendicular to a fictitious horizontal plane, then this point is designated as a wall point. When LIDAR points are projected on a dense grid, points within a narrow area close to an imaginary vertical line on the wall should fall into the same grid cell. If three or more points fall into the same cell, then the intermediate points are removed as wall points. The remaining non-ground points are then divided into clusters based on height and local neighbourhood. One or more clusters are initialised based on the maximum height of the points and then each cluster is extended by applying height and neighbourhood constraints. Planar roof segments are extracted from each cluster of points following a region-growing technique. Planes are initialised using coplanar points as seed points and then grown using plane compatibility tests. If the estimated height of a point is similar to its LIDAR generated height, or if its normal distance to a plane is within a predefined limit, then the point is added to the plane. Once all the planar segments are extracted, the common points between the neighbouring planes are assigned to the appropriate planes based on the plane intersection line, locality and the angle between the normal at a common point and the corresponding plane. A rule-based procedure is applied to remove tree planes which are small in size and randomly oriented. The neighbouring planes are then merged to obtain individual building boundaries, which are regularised based on long line segments. Experimental results on ISPRS benchmark data sets show that the proposed method offers higher building detection and roof plane extraction rates than many existing methods, especially in complex urban scenes.

1. INTRODUCTION

Automatic extraction of buildings from remote sensing data is a prerequisite for many GIS (Geographic Information System) applications, such as urban planning and 3D building modelling. Since airborne LIDAR systems provide an efficient way for rapid high resolution 3D mapping of the earth surface, much research currently focusses on automatic feature (buildings, trees, roads, ground etc.) extraction from LIDAR data. The ISPRS test project¹ on urban object classification and 3D building reconstruction has given impetus to the process of evaluation and comparison of proposed methods on a common platform.

There are two test data sets in the ISPRS benchmark project: Vainggen (VH) from Germany and Downtown Toronto (TR) from Canada. The VH data set represents a mixture of historic and residential buildings, with the historic buildings having a complex roof structure and the residential buildings a rather simple roof structure. Although there is a considerable amount of vegetation in this data set, the number of high-rise buildings is limited. In contrast, the TR data set is from the central business district of Toronto. This data set contains representative scene characteristics of a modern mega city in North America, including a mixture of low- and high-story buildings with a wide variety of rooftop structures. An example of such complex high-rise buildings is



Figure 1: A complex urban scene, downtown Toronto.

shown in Figure 1.² Consequently, the task of building detection and reconstruction in the TR data set is far more difficult than in the VH data set.

The complexity of the task of building extraction in the TR data set is not only due to complex roof structures, but also because buildings have varying heights that contribute significant shadows and occlusions. It is well known that shadows and occlusions are two major problems in feature extraction from aerial imagery.

²From http://en.wikipedia.org/wiki/Downtown_Toronto.

*Corresponding author.

¹Available at <http://www2.isprs.org/commissions/comm3/wg4/tests.html>.

Although shadows are not a problem in the LIDAR system, occlusions cause a large number of data gaps in the LIDAR point cloud. However, multiple passes from different angles by the LIDAR system can overcome this problem by capturing data of the occluded areas. There is another problem that might be observed in LIDAR data, namely that in a modern mega city like Toronto, different types of materials are used both on the roof and walls of a building. Some of these materials are glass which may be transparent or semitransparent. As a consequence, there is a significant number of unexpected LIDAR points reflected from objects inside the building and under the rooftop. Many of these points may be considered as noise. This phenomenon adds difficulty in building extraction from LIDAR point clouds in cities.

This paper proposes a new building detection method using a novel segmentation technique for LIDAR point cloud data covering complex urban scenes. The point cloud data is first divided into ground and non-ground points using a height threshold above the ground height. The non-ground points are mainly buildings and trees and these are further processed to remove the trees and to separate individual buildings. Points on walls can be removed by applying a plane fitting technique and by projecting data onto a dense grid. The remaining non-ground points are then divided into clusters based on height and local neighbourhood. The overlapping points between the neighbouring planes are assigned to the appropriate planes based on their locality and the plane intersection line. A rule-based procedure is then applied to remove tree planes, which are small in size and randomly oriented. The neighbouring planes are merged to obtain individual building regions. The building boundaries are regularised by adjusting small lines with respect to long lines.

2. RELATED WORK

Dorninger and Pfeifer (2008) proposed a comprehensive method for extraction, reconstruction and regularization of roof planes from LIDAR point clouds. Jochem et al. (2012) presented a roof plane segmentation technique from raster LIDAR data using a seed point based region growing technique. Oude Elberink and Vosselman (2009) used a target based graph matching approach that can handle both complete and incomplete laser data. Extensive and promising experimental results were shown on four data sets. Rau (2012) proposed a line-based roof model reconstruction algorithm, called TIN-Merging and Reshaping.

Awrangjeb and Fraser (2014a) proposed a region-growing method based on a plane-fitting technique using LIDAR point cloud data. Gerke and Xiao (2014) combined aerial imagery and LIDAR data to separately detect four object classes including buildings. Sohn et al. (2012) proposed a new algorithm to generalize noisy polylines comprising a rooftop model by maximizing a shape regularity (orthogonality, symmetry and directional simplifications). Mongus et al. (2014) used a multi-scale decomposition of LIDAR point cloud data to separate ground points and they applied a local surface fitting technique for extraction of planar segments. Awrangjeb et al. (2013) used roof edge and ridge lines from the aerial orthoimagery to define seed points for a region-growing technique applied on LIDAR point cloud data.

3. PROPOSED METHOD

Figure 2 shows the work flow of the proposed building extraction technique. The proposed method first divides the input LIDAR point cloud data into ground and non-ground points. The non-ground points, representing objects above the ground such

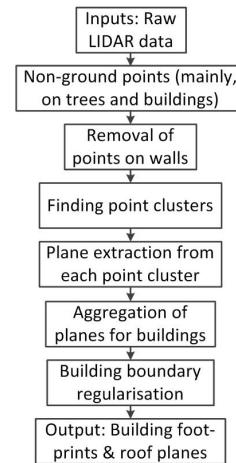


Figure 2: The proposed building extraction method.

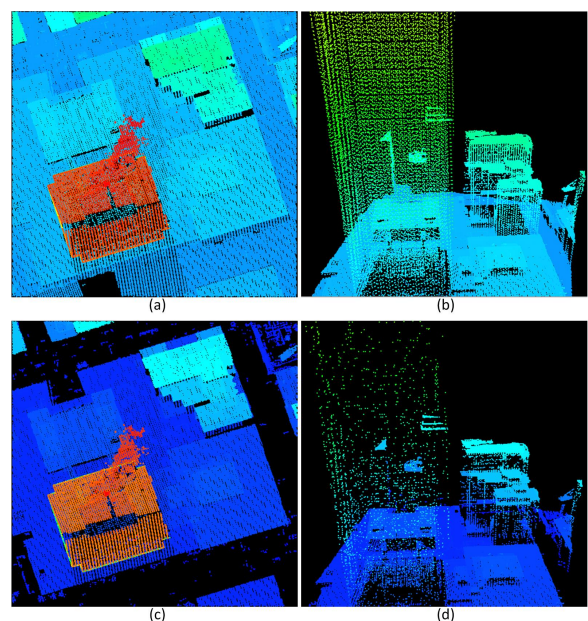


Figure 3: A sample scene from the Toronto data set: (a) LIDAR points, (b) 3D view, (c) non-ground points and (d) non-ground points after removal of wall points. In each figure, points at similar heights are shown using the same colour.

as buildings and trees, are further processed for building extraction. Points on walls are removed from the non-ground points, which are then divided into clusters. Planar roof segments are extracted from each cluster of points using a region-growing technique. The extracted segments are refined based on the relationship between each pair of neighbouring planes. Planar segments constructed in trees are eliminated using information such as area, orientation and unused LIDAR points within the plane boundary. Points on the neighbouring planar segments are accumulated to form individual building regions. A new algorithm is proposed to regularise the building boundary. The final output from the proposed method will be individual buildings and roof planes (points and 3D boundaries).

Figure 3(a) shows a sample scene from the Toronto data set, which has a point density of 6 points/m² (ISPRSbenchmark, 2013). In each subfigure of Figure 3, points at similar heights are shown using the same colour. Figure 3(b) shows a 3D view of the sample scene, where walls from some high rise buildings are shown. In the following subsections, different steps of the proposed method

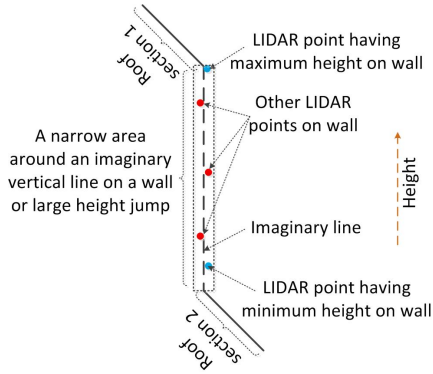


Figure 4: LIDAR points reflected from a narrow area around an imaginary line on a wall or large height jump.

are described using this sample scene.

3.1 Finding non-ground points and removing wall points

The non-ground points can be easily separated from the ground points using a bare-earth DEM (Digital Elevation Model). If a bare-earth DEM is not available, one can be generated from the LIDAR point cloud data. We assume that the bare-earth DEM is given as an input to the proposed method. For each LIDAR point, the corresponding DEM height is used as the ground height H_g . A height threshold $T_h = H_g + h_c$, where h_c is a height constant that separates low objects from higher objects, is then applied to the LIDAR data. In this study, $h_c = 1$ m has been set (Awrangjeb and Fraser, 2014a). Figure 3(c) shows the non-ground points for the sample scene.

A 2D neighbourhood, for example, Delaunay triangles or Voronoi neighbourhood, is usually considered in any region growing segmentation technique. A large number of unexpected triangles or neighbourhood points can be found for the points on a wall with the points on its walls. Since this paper aims for an effective segmentation of individual roof planes, the wall points are first removed by applying a plane fitting technique and by projecting data on a dense grid as follows. A fictitious horizontal plane \mathfrak{S} is formed. Considering the length and width of the test area to be l_a (Easting) and w_a (Northing), the following four points can be used to construct \mathfrak{S} : $(1, 1, 1)$, $(l_a, 1, 1)$, $(1, w_a, 1)$ and $(l_a, w_a, 1)$, where a constant height of 1 m is considered. For each non-ground LIDAR point P , its neighbouring point set $S_n = \{Q_i\}$ is obtained, where each neighbour Q_i resides within a distance H_d from P and has a maximum height difference of V_d with P . The value of the horizontal distance threshold H_d is set at twice the maximum point-to-point distance (d_m) in the input LIDAR data (Awrangjeb et al., 2013). Considering the maximum slope (with respect to \mathfrak{S}) for a roof plane is 75° , the value of the vertical distance threshold V_d is set at $d_m \times \tan(75^\circ)$. S_n includes P and if $|S_n| \geq 3$, a plane ζ_p is constructed for P . If the angle between ζ_p and \mathfrak{S} is at most $\frac{\pi}{32}$, then ζ_p is determined as a vertical plane and P is removed as a wall point.

The above procedure removes a large number of points reflected from walls. However, some of the points on walls may still survive, especially those which reside far away from each other or get reflected from different planes of a wall. The surviving wall points, which reside within the area close to an imaginary vertical line on a wall can be removed easily. Figure 4 shows such wall points which are far away (more than H_d) from each other. In order to remove these points, all the surviving points are projected onto a dense grid of resolution 0.25 m (Awrangjeb et al., 2012). Assuming that the grid resolution is less than the LIDAR

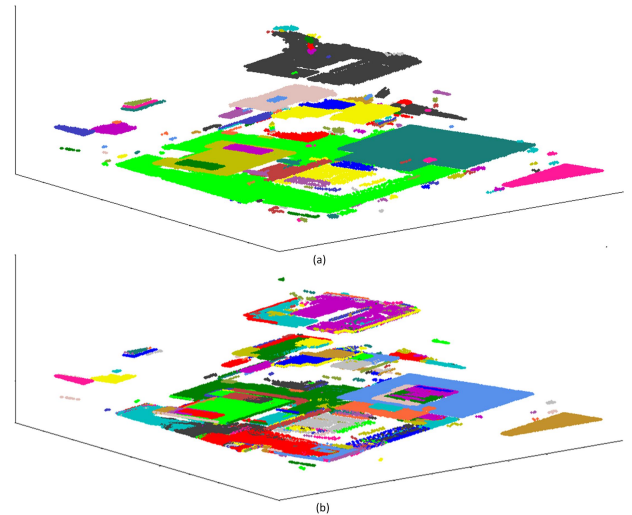


Figure 5: (a) Clusters of points for the sample scene in Figure 3 and (b) extracted planar segments.

point density (i.e., $d_m > 0.25$ m), this projection will transfer all points within a narrow area close to an imaginary vertical line to the same grid cell. If a grid cell has more than one projected point, points that are at the top and bottom of the line are kept and others are removed. For illustration, the red coloured points in Figure 4 are removed, but the light blue coloured points are preserved. Figure 3(d) shows the non-ground LIDAR points after the removal of wall points. As can be seen in the figure, points that are far away from each other or are reflected from different planes of a wall can not be removed. However, it will be unlikely that a vertical plane is extracted from these surviving wall points.

3.2 Point clustering

All the non-ground points obtained after removal of wall points are now processed to generate clusters of points based on height. Initially, all these points are not assigned to any clusters. Considering the maximum LIDAR height as the current height, points at this height (within a specified tolerance) are found and one or more clusters are initialised depending on their locality. Then each of the cluster is extended until no points can be added to the cluster. Points in each cluster are marked so that they are not assigned to another cluster. Once all the clusters initialised from the current height are finalised, the points that are not yet assigned to any clusters are then processed to generate more clusters. The next current height will be the maximum height of these unassigned points.

Let the current maximum height be h_m and the set of points that has similar height (i.e., within $h_m \pm T_f$, where $T_f = 0.1$ m (Awrangjeb et al., 2013) to allow the error in LIDAR generated heights) is S_c . One or more clusters ξ_i , where $i \geq 1$, are initialised using S_c based on the locality. For a point $P \in \xi_i$, there is at least one neighbouring point Q in the same cluster such that the 2D Euclidean distance $|P.Q| \leq H_d$. If P and Q are in two different clusters then $|P.Q| > H_d$.

In order to extend a cluster ξ_i , let R be a neighbour of P , where $P \in \xi_i$ but R has been neither assigned to any cluster nor yet designated as a wall point. R is considered to be a neighbour of P , if $|P.R| \leq H_d$ and their height difference is within V_d . R is added to ξ_i , which is iteratively extended until no R is found as a neighbour of P .

Each of the extended clusters represents an individual building, a roof plane or a roof section. Thereafter, an extended cluster

ξ_i is considered a valid cluster if it is larger than 1 m^2 in area. To obtain the area of a cluster, its points are projected onto an initially white mask M_w of resolution 0.25m (Awrangjeb et al., 2012). For each point projected at location (x, y) of M_w , all the pixels within a $n \times n$ neighbourhood are made black. The value of n is determined based on d_m and the resolution of M_w such that all the pixels corresponding to an individual building, roof section or plane become black. The area of ξ_i is thus roughly estimated by counting the number of black pixels multiplied by the pixel size.

Figure 5(a) shows a 3D view of all the clusters for the sample scene in Figure 3. Compared to the wall points in Figure 3(d), Figure 5(a) shows that the points on walls are not assigned to any clusters for the sample scene in Figure 3(a). Trees with small canopy can also be removed in this clustering technique.

3.3 Roof plane extraction

Planar roof segments are extracted from each cluster of points. By using the Delaunay triangulation algorithm, a natural neighbourhood of points in the cluster can be generated. The neighbourhood of a point P consists of the points Q_i , $1 \leq i \leq n$, where each line PQ_i is a side of a Delaunay triangle. In order to avoid points which are far away from P , the following condition is applied: $|PQ_i| \leq T_d$. The coplanarity of P is decided using its neighbouring points following the procedure in Awrangjeb and Fraser (2014a). Points within a roof plane are found to be coplanar and those along the boundary of a plane are generally found to be non-coplanar.

For each cluster, let the two sets of the non-ground LIDAR points be S_1 , containing all the coplanar points, and S_2 , containing the rest (non-coplanar). The first planar segment can now be initialised using a coplanar point $P \in S_1$ and its neighbours. This new planar segment is extended using the neighbouring points from S_1 and S_2 . Once the extension is complete, all the coplanar points in the extended planar segment are marked so that none are latter used for initiating another planar segment. As a result, the points in S_2 , which mainly reside along the plane boundaries, can be used by more than one extracted plane. The second planar segment is grown by using an unused coplanar point (from S_1). The iterative procedure continues until no coplanar point remains unused.

Figure 5(b) shows all the extracted planes for the sample scene. Since two extracted planes may have some points in common, especially along the plane intersection or when a plane is extracted twice or more times. In order to refine the extracted planes, the following rules are applied: First, if two planes share the majority of the plane points they are considered to be coincident planes (i.e., a plane is multiply extracted) and they are merged. Second, if two planes are parallel, each of the common points P is assigned to the plane with which it has a smaller normal distance. Third, for two non-parallel planes, if P is coplanar then two angles are estimated between its normal and the two plane normals. P and its neighbours are then assigned to the plane with which the angle is smaller. Fourth, P can also be assigned based on its locality, i.e., assigned to the nearest plane. Finally, the remaining common points are assigned based on their locations with respect to the plane intersection line.

In order to remove false-positive planes, mostly constructed on trees, a rule-based procedure is applied. For an extracted LIDAR plane, its area, straight line segments along its boundary, and neighbourhood information, as well as any LIDAR spikes within its boundary, are used to decide whether it is a false alarm. For a given point on the extracted LIDAR plane, the mean height

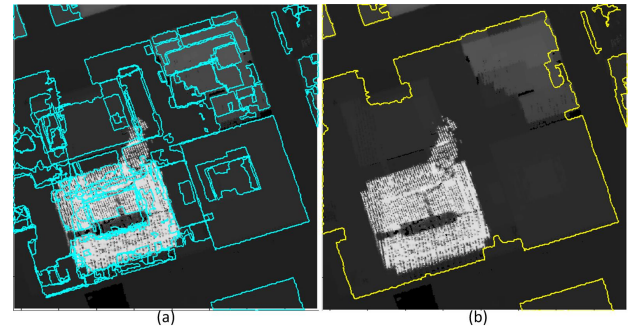


Figure 6: (a) Extracted plane boundaries for the sample scene in Figure 3 and (b) extracted building boundaries. Both are shown overlaid on a digital surface model for the sample scene.

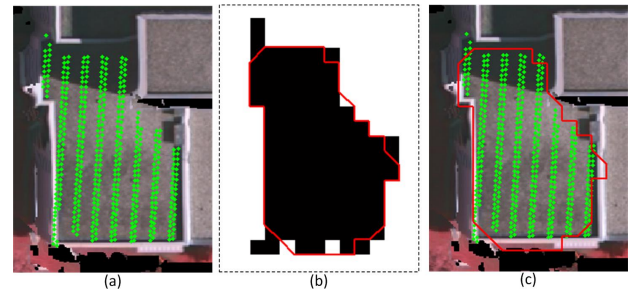


Figure 7: Extracting a 3D plane boundary: (a) LIDAR points on the plane, (b) Canny edge around a mask of resolution 0.25 m and (c) boundary after assigning only height values from the nearest LIDAR points to boundary in (b).

difference with its neighbouring points is also used. This height difference is large for a tree plane, but small for a roof plane. The average height difference for a plane is estimated from individual height differences within the plane. A LIDAR plane fitted on a tree is usually small in size and there may be some LIDAR spikes within its boundary. Moreover, there may be a large number of unused (i.e., not on any of the extracted planes) LIDAR points within the boundary of a tree plane. The number of points used by the extracted planes is usually low on a tree cluster, but high on a building cluster. Moreover, there may be some long straight line segments (at least 3m long, minimum building width (Awrangjeb et al., 2010)) along the boundary of a roof plane. Figure 6(a) shows the final extracted roof planes.

3.4 Building boundary extraction and regularisation

In order to obtain the boundary of an extracted plane, LIDAR points on the plane are used. Figure 7(a) shows the points for an extracted plane. A binary mask of resolution 0.25 m is generated, as shown in Figure 7(b). Then, the Canny edge around the black shape in the mask is extracted. Since the edge is a 2D boundary, the height values from the nearest LIDAR points are assigned to the edge points. Fig. 7(c) shows the extracted plane boundary. Figure 6(a) shows the boundaries of the extracted roof planes from the sample scene.

All the LIDAR points from the neighbouring roof planes are now merged in order to obtain an individual building segment. The building boundary is thus extracted following the same procedure discussed above. Figure 6(b) shows the building boundaries for the sample scene.

To regularise an extracted building boundary, corners on the boundary are first detected using an automatic and robust contour-based corner detector (Awrangjeb and Lu, 2008). A least-squares straight

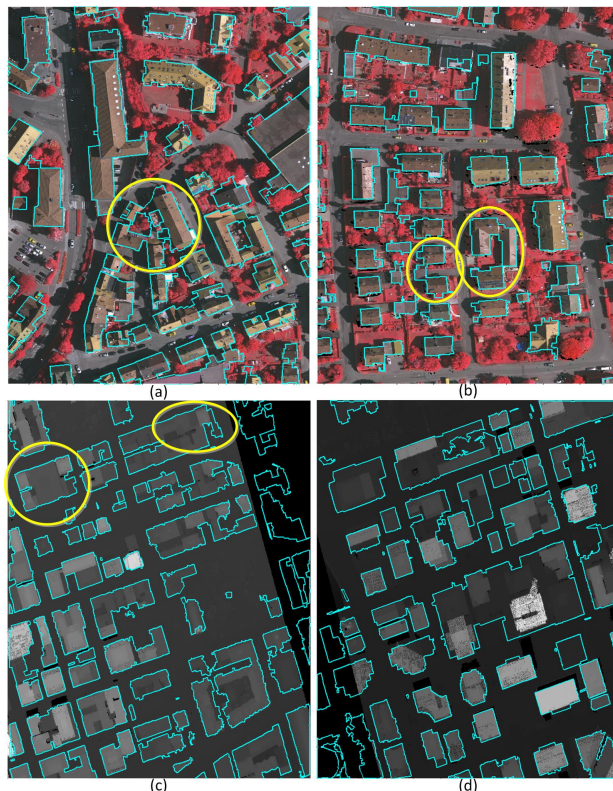


Figure 8: Building footprints overlaid on orthoimagery or on digital surface models: (a) Area 1, (b) Area 3, (c) Area 4 and (d) Area 5. Yellow coloured ellipses show examples of merged buildings.

line is then fit using the LIDAR points within the boundary segment between two consecutive corners. Lines which are at least 6 m in length, twice the minimum building length are kept fixed. Other lines are rotated to make them either parallel or perpendicular to the nearest fixed lines. Perpendicular lines are then added in between successive parallel lines. Finally, the intersection points of consecutive lines are obtained and the nearest LIDAR point heights are assigned to the intersection points to obtain the regularised building boundary. Figure 8 shows the regularised building footprints for four test areas.

4. PERFORMANCE STUDY

In the performance study conducted to assess the proposed approach, all five test areas adopted by the ISPRS benchmark project were employed. The objective evaluation followed the system in Rutzinger et al. (2009) adopted by the ISPRS benchmark project. In this system, three categories of evaluations (object-based, pixel-based and geometric) have been considered. A number of metrics have been used in the evaluation of each category. While the object-based metrics, completeness, correctness, quality and under- and over-segmentation errors, estimate the performance by counting the number of objects (buildings or planes in this study), the pixel-based metrics, completeness, correctness and quality, show the accuracy of the extracted objects by counting the number of pixels. In addition, the geometric metric (root mean square error, RMSE) indicates the accuracy of the extracted boundaries and planes with respect to the reference entities. The definitions of these indices can be found in the literature (Rutzinger et al., 2009, Awrangjeb et al., 2010, Awrangjeb and Fraser, 2014b). In the ISPRS benchmark, the minimum areas for large buildings and planes have been set at 50 m² and 10 m², respectively. Thus, the object-based completeness, correctness and

quality values will be separately shown for large buildings and planes.

4.1 Data sets

The first data set is from Vaihingen (VH) in Germany (Cramer, 2010). There are three test areas in this data set and each area is covered with a point density of 4 points/m². Area 1 is situated in the centre of the town of Vaihingen. It is characterized by dense development consisting of historic buildings having rather complex shapes, and it also has some trees. Area 2 is characterized by a few high-rise residential buildings that are surrounded by trees. Area 3 is purely residential, with detached houses and many surrounding trees. The number of buildings (larger than 2.5 m²) in these three areas is 37, 14 and 56, and the corresponding number of planes is 288, 69 and 235, respectively.

The second data set covers the central area of the City of Toronto (TR) in Canada. This ‘Downtown Toronto’ data set contains representative scene characteristics of a modern mega city in North America, including a mixture of low- and high-story buildings with a wide variety of rooftop structures, and street and road features. There are two areas selected from this data set and each has a point density of 6 points/m². The first area (Area 4) contains a mixture of low and high, multi-story buildings, showing various degrees of shape complexity in rooftop structure and rooftop furniture. The scene also contains different urban objects including cars, trees, street furniture, roads and parking lots. The second area (Area 5) represents a typical example of a cluster of high-rise buildings. The scene contains shadows cast by high buildings, under which various types of urban objects (e.g., cars, street furniture, and roads) can be found. The number of buildings (larger than 2.5 m²) in these two areas is 58 and 38, and the corresponding number of planes is 968 and 641, respectively.

4.2 Experimental results and discussion

The evaluation results are presented for building detection and roof plane extraction separately.³

4.2.1 Building detection Table 1 shows the object-based evaluation results and Table 2 shows the pixel-based and geometric evaluation results. Figures 9 and 10 depict the pixel-based performance in all five areas. They also show some complex cases, where the proposed method either failed to detect some small buildings (or parts of large buildings) or mistakenly detected some other objects.

The proposed method performed well in all five test areas. When all the buildings are considered, the average completeness and correctness in object-based evaluation were about 89%, with an average quality of 80% (Table 1). As shown in Table 2, the proposed method performed better in pixel-based evaluation, where completeness, correctness and quality values were 2 to 3 % higher than those in the object-based evaluation.

However, the proposed method failed to detect some small buildings. Two such examples are shown by yellow circles in Figure 9(f). As shown in Figure 9(e), the method also failed to extract certain complex roof structures. Some building parts that are close to the ground are also missed. The building part within the black rectangle in Figure 9(f) is less than 1 m above the ground. Another such example is shown in Figure 10(c). Figures 10(d)-(e) show two opposite scenarios, where although the structures

³Results are available at <http://www2.isprs.org/commissions/comm3/wg4/results.html> under ‘MON2’.

Table 1: Object-based evaluation of building detection results. Object-based: C_m = completeness, C_r = correctness and Q_l = quality (C_{mb} , C_{rb} and Q_{lb} are for buildings over 50 m²) in percentage. Segmentation errors: M = over-segmentation, N = under-segmentation and B = both over- and under-segmentation.

Area	C_m	C_r	Q_l	C_{mb}	C_{rb}	Q_{lb}	$M/N/B$
1	89.2	91.4	82.3	100	100	100	0/6/0
2	85.7	92.3	80	100	100	100	0/2/0
3	83.9	97.9	82.5	97.4	100	97.4	0/8/0
4	100	83.6	83.6	100	94.9	94.9	1/11/0
5	86.8	78.6	70.2	91.4	94.1	86.5	0/1/0
Avg	89.1	88.8	79.7	97.8	97.8	95.8	0.2/5.6/0

Table 2: Pixel-based and geometric evaluation of building detection results. Pixel-based: C_{mp} = completeness, C_{rp} = correctness and Q_{lp} = quality in percentage. Geometric: planimetric accuracy with respect to R_{pe} = extracted and R_{pr} = reference buildings in metre.

Area	C_{mp}	C_{rp}	Q_{lp}	R_{pe}	R_{pr}
1	88.1	90	80.3	0.95	1
2	87.1	94	82.6	0.9	0.81
3	87.7	89	79.1	0.75	0.96
4	95.1	91.1	87	0.96	1.07
5	96.7	93.2	90.3	0.89	0.93
Avg	90.9	91.5	83.9	0.89	0.95

Table 3: Object-based evaluation of plane extraction results. Object-based: C_m = completeness, C_r = correctness and Q_l = quality (C_{mb} , C_{rb} and Q_{lb} are for planes over 10 m²) in percentage. Segmentation errors: M = over-segmentation, N = under-segmentation and B = both over- and under-segmentation.

Area	C_m	C_r	Q_l	C_{mb}	C_{rb}	Q_{lb}	$M/N/B$
1	66	91.7	62.3	85.7	97.5	83.9	17/22/11
2	71	90.7	66.2	85.4	100	85.4	11/2/0
3	73.2	89.2	67.3	91.9	99.1	91.2	7/34/2
4	70.2	78.3	58.8	87.1	89	78.6	180/30/84
5	67.9	80.7	58.4	88.2	84.3	75.8	96/26/57
Avg	69.7	86.1	62.6	87.7	94	83	62.2/22.8/30.8

are higher than the surrounding ground, they are found as false positive.

When buildings larger than 50 m² are considered, the method showed the maximum performance in Areas 1 and 2. However, in Area 3 a large building was missed due to missing LIDAR data, as illustrated in Figure 9(d). In both Areas 4 and 5, some low objects were detected as shown in Figure 10(b). In Area 5, some low buildings were also missing. Consequently, in Areas 3 to 5, the proposed method did not perform the maximum for large buildings.

In Areas 1, 3 and 4 there are many under-segmentation errors as indicated in Table 1. These errors were due to merging of nearby buildings, as shown within yellow coloured ellipses in Figure 8. In terms of planimetric accuracy (Table 2), the proposed method showed better accuracy with respect to the extracted footprints than with respect to the reference data. The overall error was within 1 to 2 times the maximum point spacing in the input LIDAR point cloud data.

4.2.2 Roof plane extraction Table 3 shows the object-based evaluation results and Table 4 shows the pixel-based and geometric evaluation results. Figures 11 and 12 illustrate the extracted plane boundaries for four test areas.

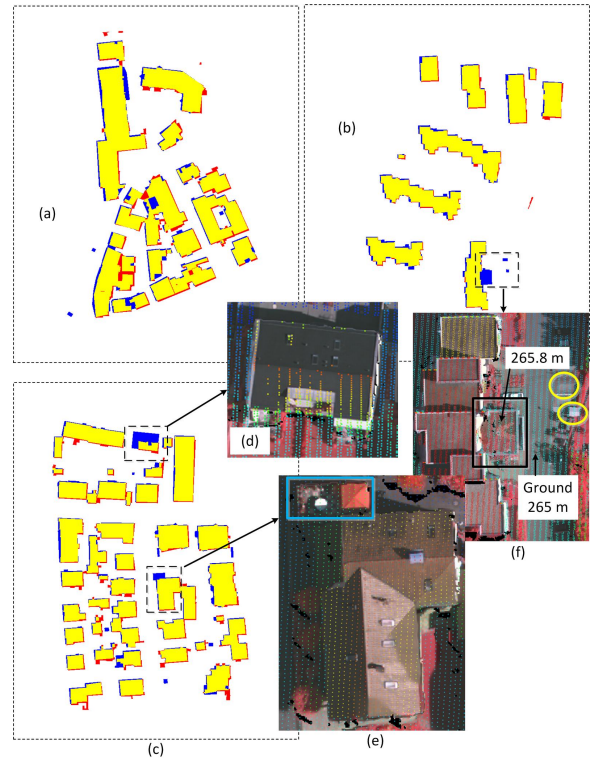


Figure 9: Building detection in the Vaihingen data set: (a) Area 1, (b) Area 2 and (c) Area 3. Some complex cases are shown in (d) to (f). Yellow = true positive, blue = false negative and red = false positive pixels.

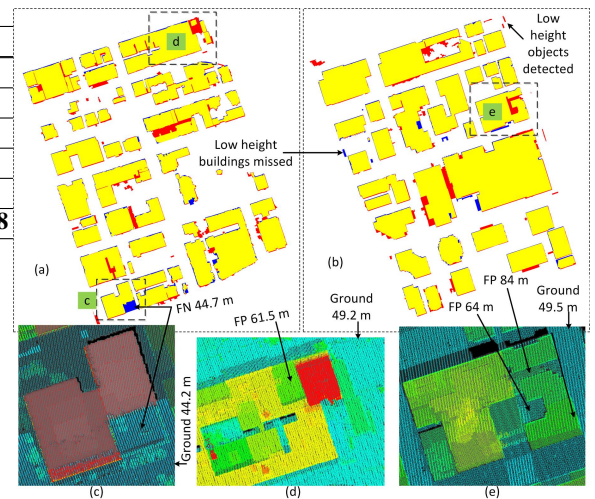


Figure 10: Building detection in the Toronto data set: (a) Area 4 and (b) Area 5. Some complex cases from (a) and (b) are shown in (c) to (e). Yellow = true positive, blue = false negative (FN) and red = false positive (FP) pixels.

In object-based evaluation (Table 3), the proposed method performed better in the Vaihingen than in the Toronto data sets. Among three Vaihingen areas, it performed the best in Area 3, which is a residential area, followed by Areas 2 and 1. Between the two Toronto areas, the method performed slightly better in Area 4 than in Area 5. A similar performance trend was observed for planes larger than 10 m² in area.

While the completeness, correctness and quality values for planes larger than 10 m² are compared with those of all planes, it is evident that there is a significant number of small roof planes in

Table 4: Pixel-based and geometric evaluation of plane extraction results. Pixel-based: C_{mp} = completeness, C_{rp} = correctness and Q_{lp} = quality in percentage. Geometric: planimetric accuracy with respect to R_{pe} = extracted and R_{pr} = reference planes and height error with respect to R_{he} = extracted and R_{hr} = reference planes in metre.

Area	C_{mp}	C_{rp}	Q_{lp}	R_{pe}	R_{pr}	R_{he}	R_{hr}
1	74.4	97.9	73.2	0.77	0.87	0.36	0.23
2	76.8	99.4	76.4	0.92	0.7	0.42	0.34
3	81.5	98.1	80.3	0.83	0.79	0.21	0.13
4	87.2	94.2	82.7	1.14	1.06	3.31	2.79
5	91.1	93.9	86	1.21	1.12	22.84	16.63
Avg	82.2	96.7	79.7	0.97	0.91	5.43	4.02

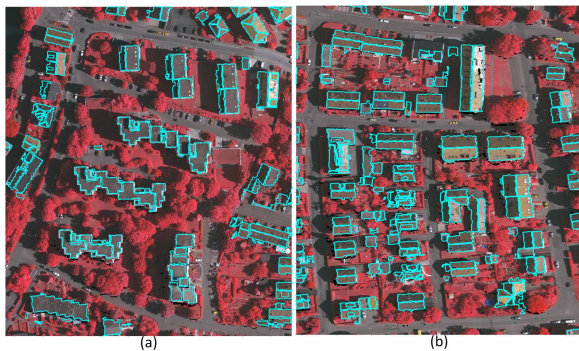


Figure 11: Extracted roof planes in the Vaihingen data set: (a) Area 1 and (b) Area 3.

the benchmark data sets and the method missed many of these. The large number of over-segmentation errors indicates that the method did not work well for complex roof structures, especially in Areas 4 and 5. Moreover, a high number of under-segmentation errors in all areas, except in Area 2, is clear evidence that the method merged a large number of neighbouring small planes with big planes.

In pixel-based evaluation (Table 4), in terms of completeness and quality, the method performed best in Area 5 followed by Areas 4, 3, 2 and 1. Among all test areas, it showed the best correctness in Area 2, followed by Area 3. In Areas 4 and 5 many false planes were extracted, as shown by red coloured pixels in Figure 10(a)-(b).

The planimetric accuracy was similar to that in building detection results, approximately 1 to 2 times the maximum point spacing in the input LIDAR point cloud. In terms of height accuracy, the method showed better performance in the Vaihingen data set than in the Toronto data set. In Area 5, it showed a significant height error.

On average, the proposed method showed better performance in pixel-based evaluation than in object-based evaluation. While in object-based evaluation the completeness, correctness and quality values were 70%, 76% and 63%, respectively, in pixel-based evaluation they were 82%, 97% and 80%, respectively. Thus, it is evident that although the proposed method is capable of recognising all LIDAR points on complex building roofs, it suffers from a large number of segmentation errors.

4.3 Comparative performance

In this section, the results from the proposed method are compared with those from existing methods that exploit LIDAR data as an input source. The methods being compared in this study are chosen such that they have been tested at least against the TR data

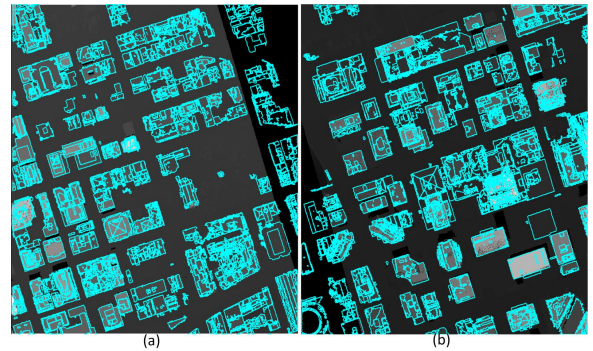


Figure 12: Extracted roof planes in the Toronto data set: (a) Area 4 and (b) Area 5.

set, which represents a modern city.⁴ As usual, the comparisons are shown separately for building detection and roof extraction.

4.3.1 Comparing building detection performance In building detection, in Areas 1 to 3 the proposed method always showed better completeness, in both object- and pixel-based evaluation, than Mongus et al. (2014). In Area 3, the proposed method showed significantly better object-based completeness than Mongus et al. (84% vs 70%). But Mongus et al. showed 4 to 9% better correctness in some cases, specially in Areas 1 and 3. In Area 4, Mongus et al. showed better correctness values (3 to 11%) than the proposed method. However, in Area 5 the proposed method offered 3 to 17% better object-based and pixel-based correctness. Nevertheless, Mongus et al. is a semiautomatic method as it has to tune parameter values for different test data sets. For example, the area threshold was set at 25 m² for the VH data set and 100 m² for the TR data set, which is also an indication that their approach is unable to detect small buildings such as garages and garden sheds.

In terms of object- and pixel-based correctness and completeness and also when buildings larger than 50 m² are considered, the proposed method (in most cases, except an object-based correctness value in Area 4) offered better performance than Gerke and Xiao (2014) in Areas 4 and 5. In the TR data set, while the object-based correctness values were around 80% by the proposed method, those by Gerke and Xiao were significantly lower (e.g., less than 30% in Area 5). A similar performance difference was found in Area 2: while Gerke and Xiao offered significantly lower object-based correctness values (12 and 42% using Markov model and random tree, respectively), the proposed method offered a high correctness of 92%. In Area 3, while the proposed method offered an object-based correctness of 98%, Gerke and Xiao showed only 63% correctness when the Markov model was used for unsupervised classification.

4.3.2 Comparing roof extraction performance In Area 4, in most cases the proposed method offered 2 to 10% better correctness and completeness than Rau (2012), which showed 2% more pixel-based correctness than the proposed method (80 vs 78%). The proposed method also showed better planimetric and height accuracy in this area. In Area 5, in terms of completeness and correctness, while the proposed method offered 1 to 3% better object-based performance, Rau offered 2 to 3% better pixel-based performance. In this area, although the proposed method offered better planimetric accuracy (1.1 m vs 1.8 m) than Rau, it showed higher height errors. In Areas 1 to 3, while the proposed method offered better height accuracy, Rau in general offered better pixel-based completeness and correctness. It should be noted

⁴Results from the methods being compared are available at <http://www2.isprs.org/commissions/comm3/wg4/results.html>.

that Rau is a semiautomatic method and the structure lines need to be manually extracted from the stereo-pair, whereas the proposed method is fully automatic.

In Area 5, in both object- and pixel-based evaluations, while the proposed method offered 2 to 3% better completeness than Sohn et al. (2012), the latter showed 2 to 4% better correctness. In Area 4, in most cases Sohn et al. gave better performance than the proposed method, while the proposed method showed better object-based completeness and planimetric accuracy. In Areas 1 to 3, in most cases Sohn et al. again offered better performance than the proposed method. The proposed method showed better completeness in Area 2 and better height accuracy in all 3 areas.

In all test areas, while the proposed method suffered from more over-segmentation errors, Rau (2012) and Sohn et al. (2012) had more under-segmentation errors.

5. CONCLUSION

A method for segmentation of LIDAR point cloud data for automatic detection and extraction of building rooftops has been proposed. Experimental results have shown that the proposed method is capable of yielding higher building detection and roof plane extraction rates than many existing methods, especially in complex urban scenes, as exemplified here by downtown Toronto.

However, since the method uses LIDAR data alone, the planimetric accuracy is limited by the LIDAR point density. At present, the method does not incorporate smoothing of the boundaries of extracted planar segments. Moreover, it will not work on curved roofs. Since the involved evaluation system (Rutzinger et al., 2009) is a threshold-based evaluation system, a bias-free evaluation using an automatic and threshold-free system (Awrangjeb and Fraser, 2014b) would be useful for more reliable experimental results. Future work will look at the development of a regularisation procedure to smooth roof plane boundaries and to reconstruct building roof models. The integration of image data will also facilitate better object extraction where LIDAR information is missing. An extension of the proposed method could be the use of higher density point cloud data (e.g., a low density LIDAR point cloud complemented by a DSM derived from dense image matching) and thus the curved surfaces could be better approximated.

ACKNOWLEDGEMENTS

Dr. Awrangjeb is the recipient of the Discovery Early Career Researcher Award by the Australian Research Council (project number DE120101778). The Vaihingen data set was provided by the German Society for Photogrammetry, Remote Sensing and Geoinformation (DGPF) (Cramer, 2010). The authors would like to acknowledge the provision of the Downtown Toronto data set by Optech Inc., First Base Solutions Inc., GeoICT Lab at York University, and ISPRS WG III/4.

REFERENCES

Awrangjeb, M. and Lu, G., 2008. Robust image corner detection based on the chord-to-point distance accumulation technique. *IEEE Transactions on Multimedia* 10(6), pp. 1059–1072.

Awrangjeb, M., Ravanbakhsh, M. and Fraser, C. S., 2010. Automatic detection of residential buildings using LIDAR data and multispectral imagery. *ISPRS Journal of Photogrammetry and Remote Sensing* 65(5), pp. 457–467.

Awrangjeb, M., Zhang, C. and Fraser, C. S., 2012. Building detection in complex scenes through effective separation of buildings from trees. *Photogrammetric Engineering & Remote Sensing* 78(7), pp. 729–745.

Awrangjeb, M., Zhang, C. and Fraser, C. S., 2013. Automatic extraction of building roofs using LIDAR data and multispectral imagery. *ISPRS Journal of Photogrammetry and Remote Sensing* 83(9), pp. 1–18.

Awrangjeb, M. and Fraser, C. S., 2014a. Automatic Segmentation of Raw LIDAR Data for Extraction of Building Roofs. *Remote Sensing* 6(5), pp. 3716–3751.

Awrangjeb, M. and Fraser, C. S., 2014b. An automatic and threshold-free performance evaluation system for building extraction techniques from airborne LIDAR data. *IEEE Journal of Selected Topics in Applied Earth Observations and Remote Sensing*, doi: 10.1109/JSTARS.2014.2318694.

Cramer, M., 2010. The DGPF test on digital aerial camera evaluation - overview and test design. *Photogrammetrie Fernerkundung Geoinformation* 2, pp. 73–82.

Dorninger, P. and Pfeifer, N., 2008. A comprehensive automated 3D approach for building extraction, reconstruction, and regularization from airborne laser scanning point clouds. *Sensors* 8, pp. 7323–7343.

Gerke, M. and Xiao, J., 2014. Fusion of airborne laserscanning point clouds and images for supervised and unsupervised scene classification. *ISPRS Journal of Photogrammetry and Remote Sensing* 87, pp. 78–92.

ISPRSbenchmark, 2013. Benchmark data sets and test results. <http://www2.isprs.org/commissions/comm3/wg4/results.html> (last date accessed: 15 Jan 2014).

Jochem, A., Höfle, B., Wichmann, V., Rutzinger, M. and Zipf, A., 2012. Area-wide roof plane segmentation in airborne LIDAR point clouds. *Computers, Environment and Urban Systems* 36(1), pp. 54–64.

Mongus, D., Lukač, N. and Žalik, B., 2014. Ground and building extraction from LIDAR data based on differential morphological profiles and locally fitted surfaces. *ISPRS Journal of Photogrammetry and Remote Sensing* 93(7), pp. 145–156.

Oude Elberink, S. and Vosselman, G., 2009. Building reconstruction by target based graph matching on incomplete laser data: analysis and limitations. *Geodetski Vestnik* 9(8), pp. 6101–6118.

Rau, J. Y., 2012. A line-based 3D roof model reconstruction algorithm: TIN-merging and reshaping (TMR). In: *ISPRS Annals of the Photogrammetry, Remote Sensing and Spatial Information Sciences*, Vol. I-3, Melbourne, Australia, pp. 287–292.

Rutzinger, M., Rottensteiner, F. and Pfeifer, N., 2009. A comparison of evaluation techniques for building extraction from airborne laser scanning. *IEEE Journal of Selected Topics in Applied Earth Observations and Remote Sensing* 2(1), pp. 11–20.

Sohn, G., Jwa, Y., Jung, J. and Kim, H. B., 2012. An implicit regularization for 3D building rooftop modelling using airborne LIDAR data. In: *ISPRS Annals of the Photogrammetry, Remote Sensing and Spatial Information Sciences*, Vol. I-3, Melbourne, Australia, pp. 305–310.