

CORRECTION

Open Access



# Correction: Unveiling the evolution of generative AI (GAI): a comprehensive and investigative analysis toward LLM models (2021–2024) and beyond

Zarif Bin Akhtar<sup>1\*</sup>

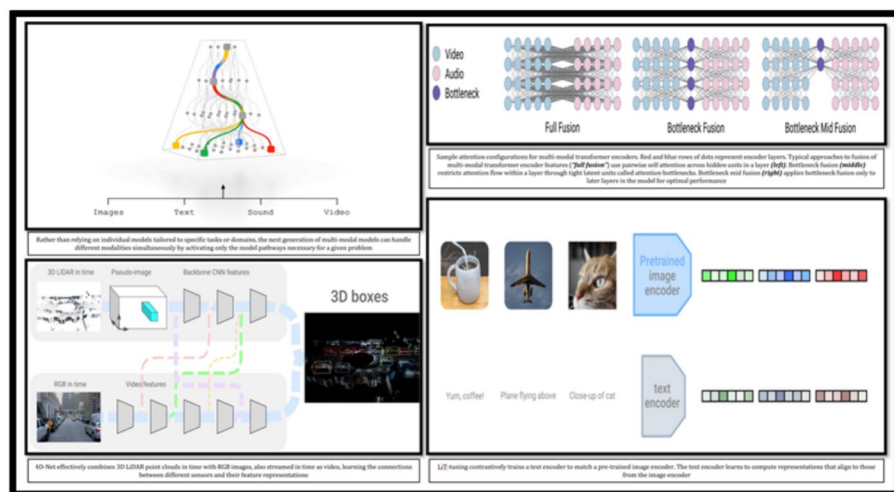
The original article can be found online at <https://doi.org/10.1186/s43067-024-00145-1>.

\*Correspondence:  
zarifbinakhtarg@gmail.com;  
zarifbinakhtar@ieee.org

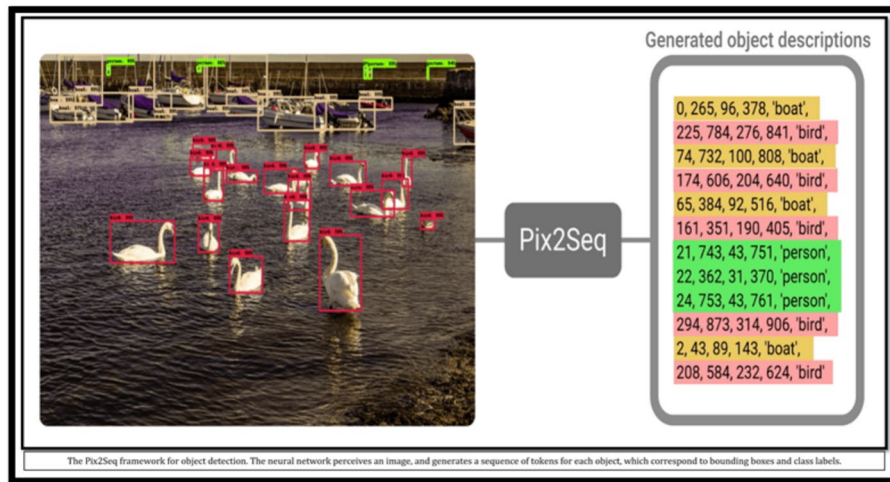
<sup>1</sup>Department of Engineering,  
University of Cambridge,  
Cambridge, UK

**Correction: Journal of Electrical Systems and Inf Technol (2024) 11:22**  
<https://doi.org/10.1186/s43067-024-00145-1>

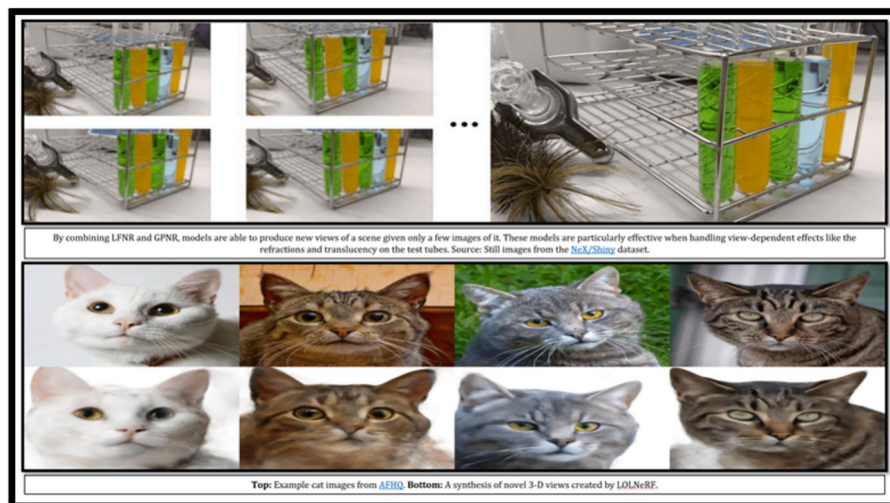
Following publication of the original article [1], the authors reported problems in Figs. 4, 6 and 7. The figures could not be shown fully because they contain animated graphical illustrations. The updated Figs. 4, 6 and 7 have been provided in this correction.



**Fig. 4** An overview illustration for Multimodal Models in action



**Fig. 6** The research findings for generative AI models in experimentation 1



**Fig. 7** The research findings for generative AI models in experimentation 2

The original article [1] has been corrected.

Published online: 08 August 2024

**Reference**

1. Akhtar ZB (2024) Unveiling the evolution of generative AI (GAI): a comprehensive and investigative analysis toward LLM models (2021–2024) and beyond. *Journal of Electrical Systems and Inf Technol* 11:22. <https://doi.org/10.1186/s43067-024-00145-1>

**Publisher’s Note**

Springer Nature remains neutral with regard to jurisdictional claims in published maps and institutional affiliations.