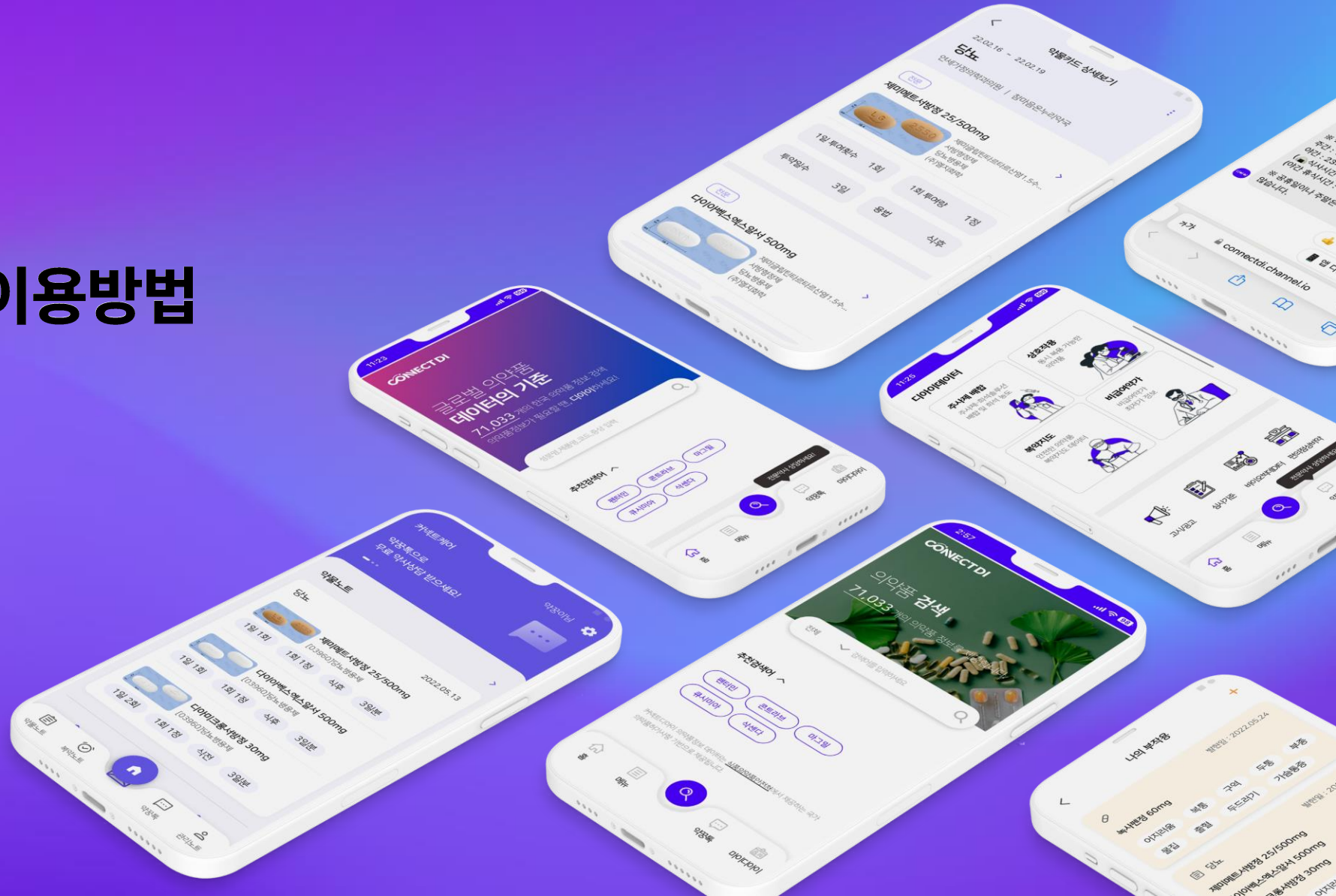


# Vet-Anatomy 이용방법





## 1. Vet-Anatomy란?

vet-Anatomy는 의료 이미징을 기반으로 한 수의 해부학의 고품질 아틀라스로, Susanne AEB Boroffka 박사, dipl. ECVDI, 박사 및 Antoine Micheau, 의사의 감독 아래 만들어졌습니다. 이는 인기있는 수상 경력이 있는 e-Anatomy와 동일한 구조를 기반으로 하지만 동물에 특화되어 있습니다.

### Animal Coverage

---

Dog  
Cat  
Horse  
Bovine  
Mouse

### Contents Coverage

---

CT  
Endoscopy  
Illustrations  
MRI  
Radiographs



## 2. 로그인하기

1. 로그인 클릭  
(학내접속시 로그인 없이 이용 가능)

학내접속중

IMAIOS ANATOMY IMAGING EXAM PREP. SUBSCRIBE SUPPORT

Seoul Veterinary Medical Library

LOGIN

2. 아이디, 비밀번호 입력

Sign up

ones@onesglobal.com

.....

Keep me signed in

Forgot your password?

LOGIN REGISTER →

OR

Sign in with Google

Sign in with Facebook

IMAIOS ANATOMY IMAGING EXAM PREP. SUBSCRIBE SUPPORT

Seung Won Lee

e-Anatomy

vet-Anatomy

Anatomy Ninja Lower Limb

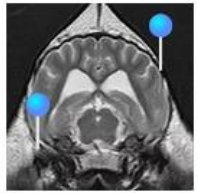
3. 데이터베이스 선택



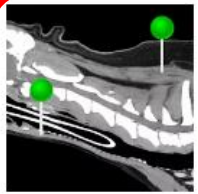
### 3. Vet-Anatomy 검색방법

DOG

Atlas of the canine anatomy based on veterinary anatomy diagrams and



Dog - Brain  
MRI  
PREMIUM



Dog - Neck  
CT  
PREMIUM

**SPECIES** ▼

- Dog
- Cat
- Horse
- Bovine
- Mouse

Clear filters

**MODALITIES** ▼

- CT
- Endoscopy
- Illustrations
- MRI
- Photography
- Radiographs

Clear filters

1. Species에서 종 선택

2. Modalities에서 형태 선택

3. 이미지 선택

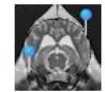


Dog - Osteology  
Illustrations  
PREMIUM

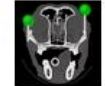


Dog - Arthrology  
Illustrations  
PREMIUM

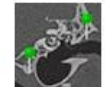
DOG



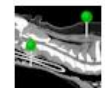
Dog - Brain  
MRI  
PREMIUM



Dog - Head  
CT  
FREE



Dog - Temporal bone  
CT  
PREMIUM



Dog - Neck  
CT  
PREMIUM



Dog - Osteology  
Radiographs  
FREE



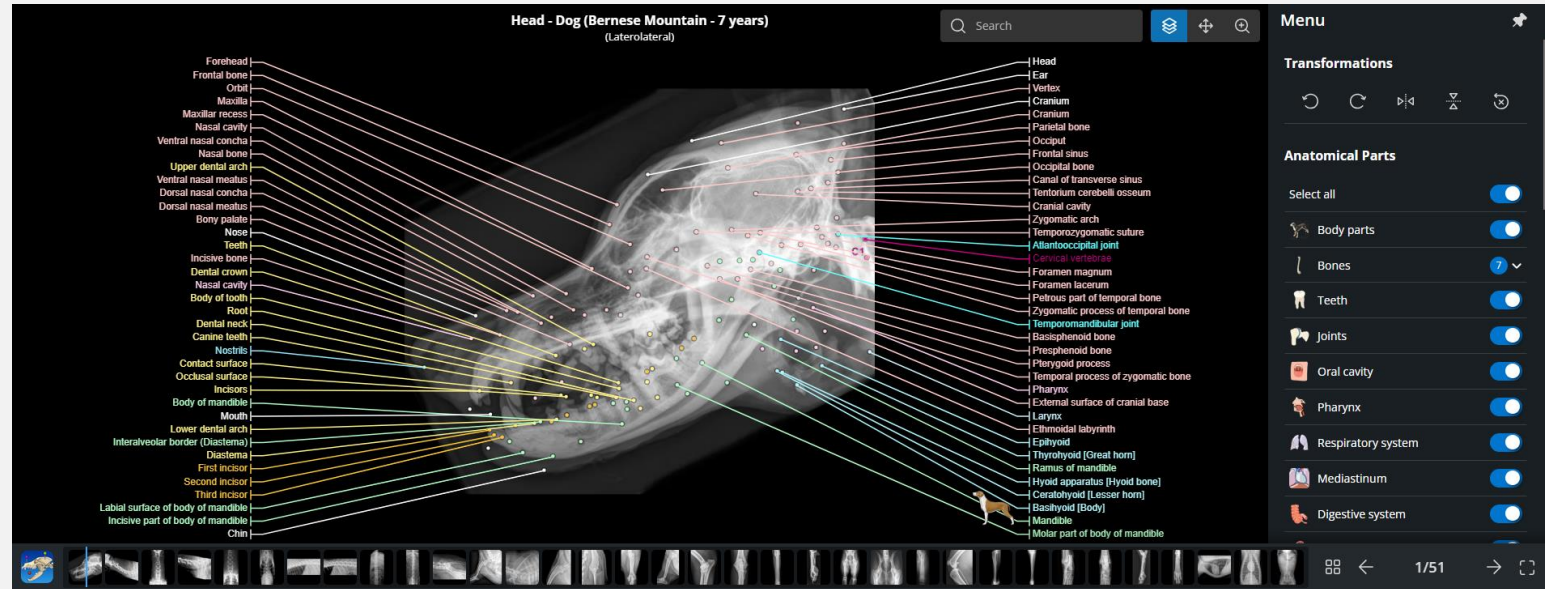
Dog - General anatomy  
Illustrations  
FREE



Dog - Myology



### 3. Vet-Anatomy 검색방법



스크롤모드

이미지 위치이동

줌

이미지 상하 회전

이미지 좌우 회전

왼쪽으로 회전

오른쪽으로 회전

실행취소

퀴즈모드로 전환

이미지 저장

HQ 이미지로 전환

View Zone 사용

Menu Description 열람

Anatomical parts 표시하고자하는 카테고리선택

Series 시리즈 선택

Language 언어 선택

검색

전체화면보기



### 3. Vet-Anatomy 검색방법

The screenshot displays the Vet-Anatomy software interface. On the left, there is a 'Definition' section with a note: 'There is no description for this anatomical part yet.' Below this are sections for 'In this module' and 'In other modules', each containing small image thumbnails. The central part of the interface features a 3D rendered skull of a dog with numerous colored lines pointing to specific anatomical features. These features are listed in two columns of labels:
 

- Left column labels: Frontal bone, Orbit, Maxillary recess, Maxilla, Nasal cavity, Ventral nasal concha, Upper dental arch, Nasal bone, Dental crown, Ventral nasal meatus, Bony palate, Dorsal nasal concha, Dorsal nasal meatus, Body of tooth, Teeth, Nose, Incisive bone, Root, Nasal cavity, Dental neck, Occlusal surface, Canine teeth, Nostrils, Contact surface, Incisors, Body of mandible, Mouth, Lower dental arch, Interaleveolar border (Diastema), Diastema, First incisor, Second incisor, Third incisor, Labial surface of body of mandible, Incisive part of body of mandible, Chin.
- Right column labels: Vertex, Cranium, Ear, Cranium, Frontal sinus, Parietal bone, Occiput, Cranial cavity, Occipital bone, Canal of transverse sinus, Tentorium cerebelli osseum, Temporozygomatic suture, Zygomatic arch, Atlantooccipital joint, Cervical vertebrae, Foramen magnum, Foramen lacerum.

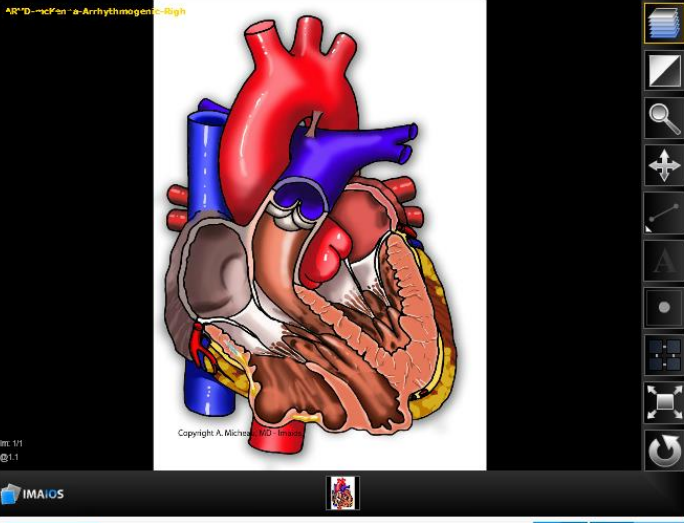
 A red box highlights the 'Mandible' label in the right column. A grey callout box with a white arrow points to the 'Mandible' label and contains the text '1. 명칭 클릭'. On the far right, there is a control panel with 'Anatomical Parts' and a list of categories with toggle switches: 'Body parts', 'Bones' (set to 7), 'Cranium', 'Pharynx', and 'Respiratory system'. At the bottom of the interface is a horizontal strip of small image thumbnails.

- Images: 타입별, 모듈별 관련 이미지 열람
- Description: 설명
- Anatomical hierarchy: 해부학적 계층구조
- Anatomical children: 해부학적 하위구조



### 3. Vet-Anatomy 검색

Criteria of McKenna on MRI: modified task force criteria



**History**

Major criteria:

- Regional RV akinesia or dyskinesia or dyssynchronous RV contraction

And 1 of the following:

- Ratio of RV end-diastolic volume to BSA  $\geq 110$  mL/m<sup>2</sup> (male) or  $\geq 100$  mL/m<sup>2</sup> (female)
- or RV ejection fraction  $\leq 40\%$

Minor criteria:









- Regional RV akinesia or dyskinesia or dyssynchronous RV contraction

And 1 of the following:

- Ratio of RV end-diastolic volume to BSA  $\geq 100$  mL/m<sup>2</sup> to  $< 110$  mL/m<sup>2</sup> (male) or  $\geq 90$  mL/m<sup>2</sup> to  $< 100$  mL/m<sup>2</sup> (female)
- or RV ejection fraction  $> 40\%$  to  $\leq 45\%$

References:

Diagnosis of arrhythmogenic right ventricular cardiomyopathy/dysplasia: proposed modification of the task

-  마우스를 수직으로 움직이면 이미지 스크롤
-  마우스를 수직으로 움직이면 이미지 밝기 변화, 수평으로 움직이면 명암변화
-  마우스를 수직으로 움직이면서 줌인, 줌아웃
-  이미지 드래그
-  마우스를 움직여 픽셀/mm 그리기 및 측정
-  주석 표시
-  전체 이미지 보기
-  실행취소



### 3. Vet-Anatomy 검색방법

HOME / VET-ANATOMY / DOG-OSTEOLOGY

**ANATOMICAL PARTS**

- Abdomen
- Abdominal cavity
- Accessory carnal bone
- Acetabulum
- Acromion
- Additional terms
- Ala of ilium; Wing of ilium
- Ala; Wing of sacrum
- Alar canal
- Alar notch
- Alar spine
- Alimentary canal
- Alveolar arch
- Alveolar border
- Anconeal process
- Angiology
- Angle of costal arch
- Angle of mandible

**Atlas of anatomy on x-ray images of**

Antoine Micheau, MD, Denis HOA, MD, Susanne AEB Boroffka, PhD - dipl. ECVDI

Authors affiliations

Publication date: Feb 6, 2019 | Last update: Apr 11, 2022

<https://doi.org/10.37019/vet-anatomy/402856> ISSN 2534-5087

This module of vet-Anatomy is a basic atlas of normal imaging anatomy of the dog on radiographs. 51 sampled x-ray images of healthy dogs performed by Susanne AEB Boroffka (PhD - dipl. ECVDI, Utrecht, Netherland) were categorized topographically into seven chapters (head, vertebral column, thoracic limb, pelvic limb, larynx/pharynx, thorax and abdomen/pelvis).

648 differentiated anatomical terms were labelled by Antoine Micheau (MD, Montpellier, France), using different colors to improve the survey and the identification of searched structures on each radiograph.

Terms were labelled using the Latin terms defined in the Nomina Anatomica Veterinaria (fifth edition - 2012 by ICVCAN). They were translated into English and French by Antoine Micheau - MD, Imaios

해당 이미지의 해부학적 파트. 클릭 시, 상세정보로 이동

이미지 타이틀 및 설명자료

저자, 날짜, 섹션

해당 이미지의 해부학적 파트. 클릭 시, 상세정보로 이동



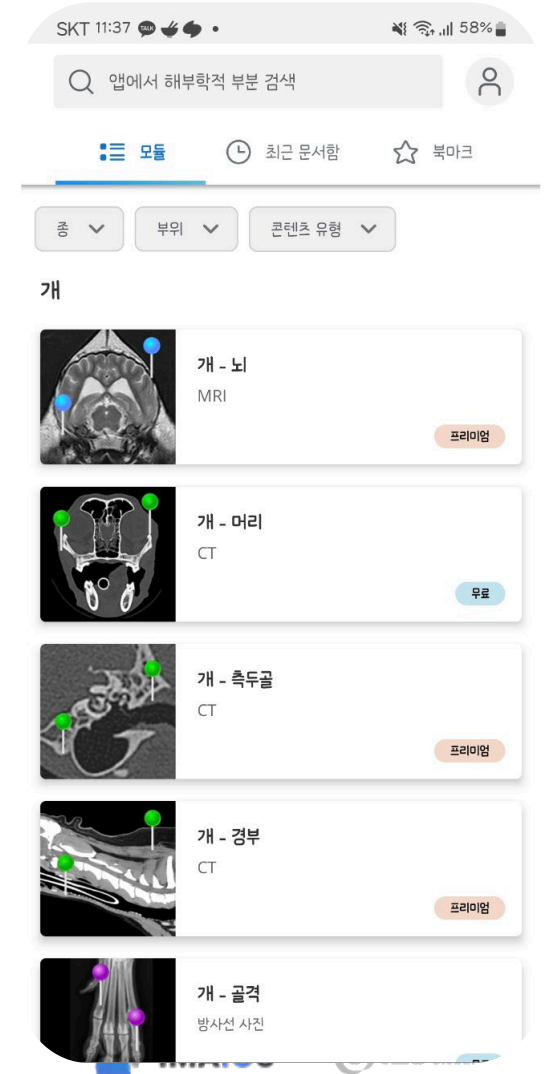
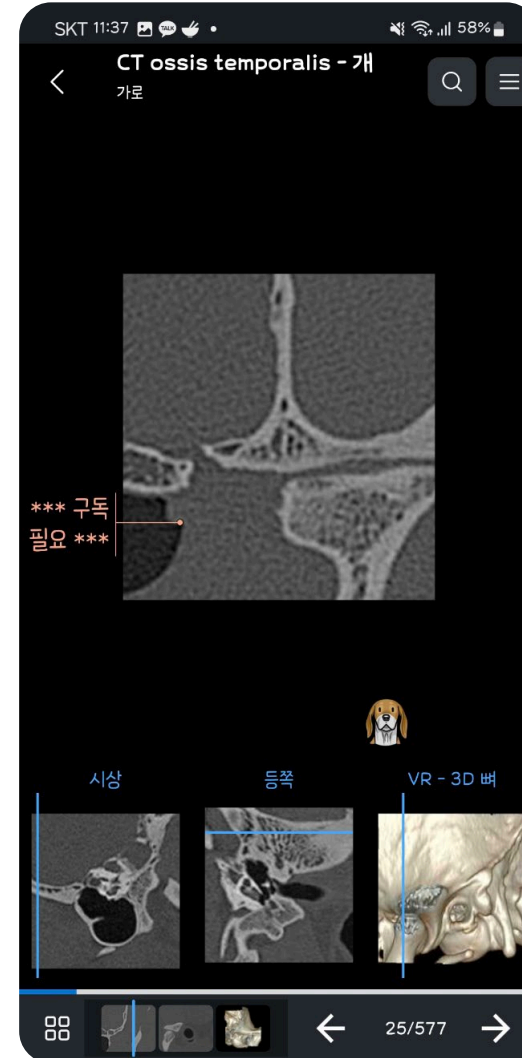


## 4. Vet-Anatomy 모바일 이용방법

IP 구독의 경우, 귀하의 기관이 연결할 수 있는 Wi-Fi 네트워크가 있다면, 모바일 기기 (Android 및 iOS)에서 IMAIOS vet-Anatomy 앱에 접속하는 방법은 다음과 같습니다:

1. 계정을 보유하고 있지 않다면, 저희 웹사이트나 모바일에서 무료 IMAIOS 계정을 생성하여 사용자 이름과 암호를 받으십시오.
2. 모바일 기기에 무료 IMAIOS vet-Anatomy 앱을 다운로드하고 설치하십시오 (iTunes 또는 Google Play에서)
3. 모바일 기기를 귀하의 기관 Wi-Fi 네트워크에 연결하십시오 (활성화된 IP 주소로)
4. 앱을 시작하고 IMAIOS 사용자 이름과 암호를 사용하여 로그인하십시오

모든 콘텐츠와 기능은 2주 동안 활성화됩니다 (이 두 주 간격은 기관 Wi-Fi 네트워크에 연결된 상태로 앱을 사용할 때마다 재설정됩니다).



# **DATA Save LIVES**

No.1 Digital Healthcare Company ONES Global

**H** [www.onesglobal.com](http://www.onesglobal.com)

**E** [khpark@onesglobal.com](mailto:khpark@onesglobal.com)

**P** 02-3275-1250