

SUPPLEMENTARY MATERIAL

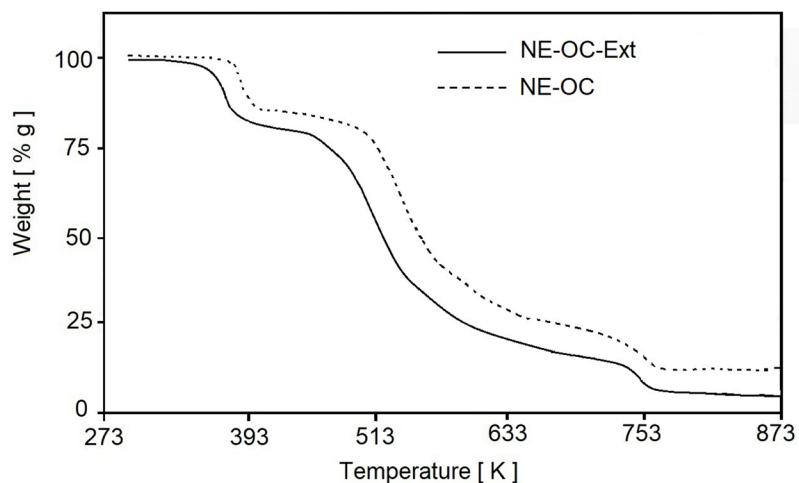


Figure S1. TG curves of nanoemulsions with and without wine lees (NE-OC-Ext) and (NE-OC), respectively.

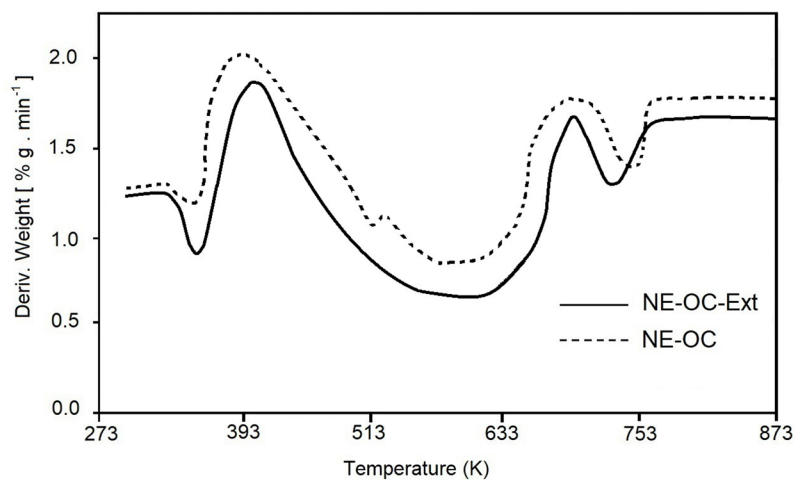


Figure S2. DTG curves of nanoemulsions with and without wine lees (NE-OC-Ext) and (NE-OC), respectively.

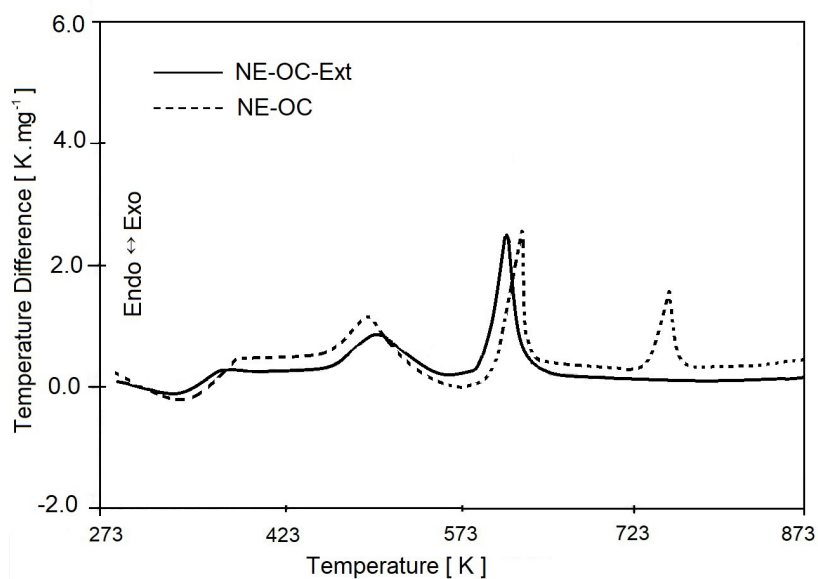


Figure S3. DTA curves of nanoemulsions with and without wine lees (NE-OC-Ext) and (NE-OC), respectively.

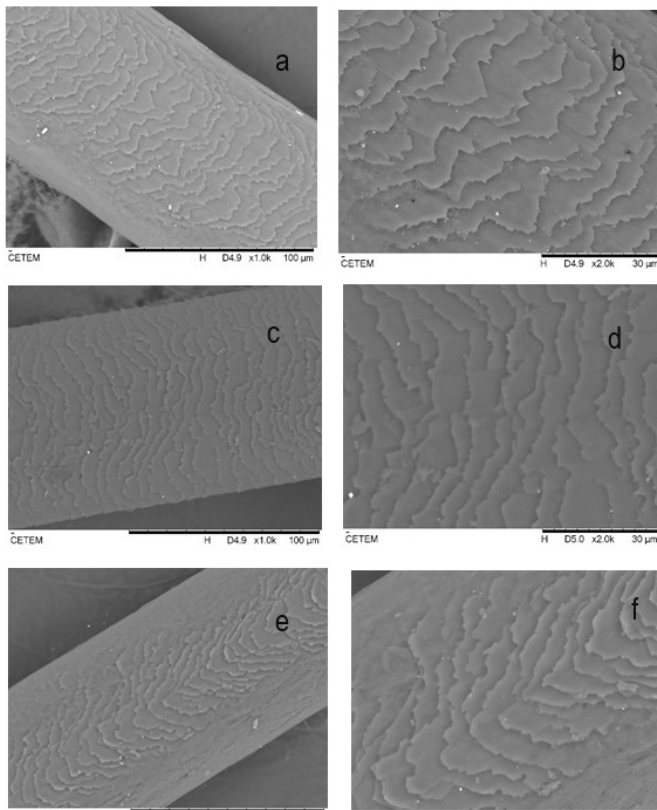


Figure S4. Scanning Electron Microscopy (SEM) analysis of untreated hair (a and b), untreated hair treated with NE-OC (c and d), and untreated hair treated with NE-OCExt (e and f).

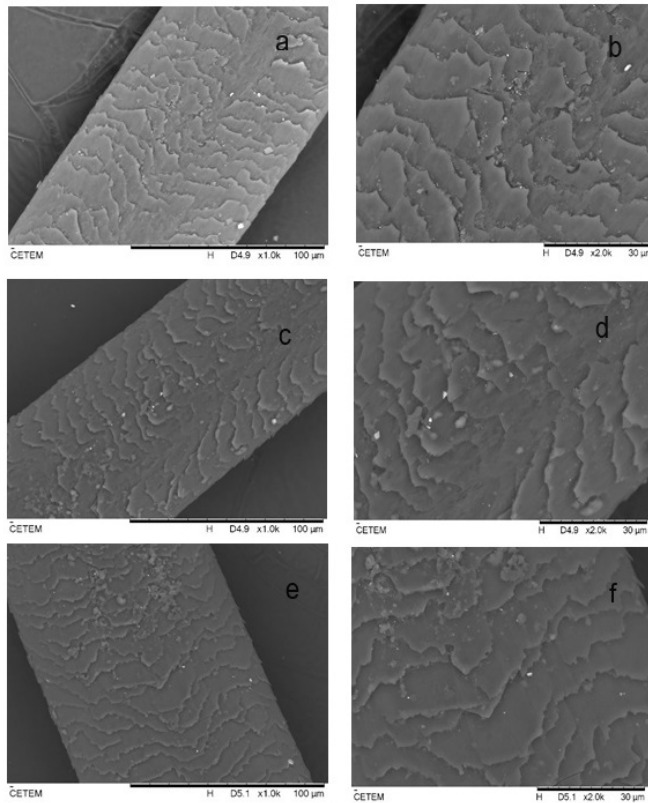


Figure S5. Scanning Electron Microscopy (SEM) analysis of bleached hair (a and b), bleached hair treated with NE-OC (c and d) and bleached hair treated with NE-OC (e and f).

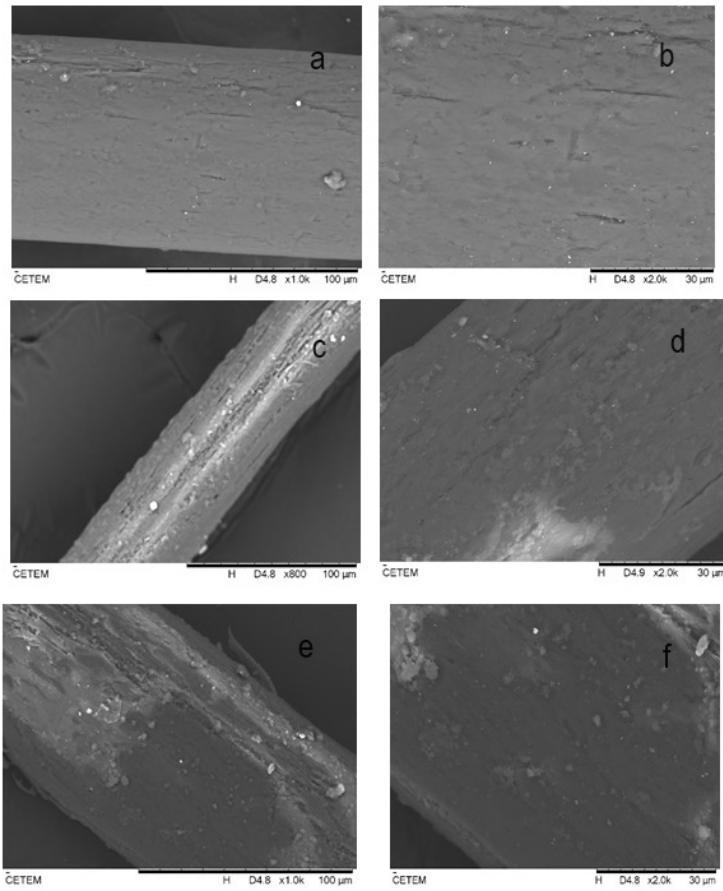


Figure S6. Scanning Electron Microscopy (SEM) analysis of bleached hair (a and b), bleached hair treated with NE-OC (c and d) and bleached hair treated with NE-OC (e and f).