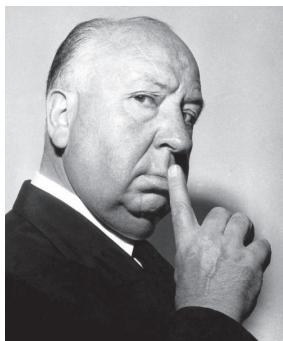


HITCHCOCK

2020



Editor

Sidney Gottlieb

Editorial Advisory Board

Richard Allen Thomas L. Leitch
James Naremore David Sterritt
Michael Walker

Founding Editor

Christopher Brookhouse

Editorial Associate

Renata Jackson

Cover Design

Deborah Dutko

We evaluate manuscripts for the *Hitchcock Annual* throughout the year. Send any correspondence by mail to Sidney Gottlieb, Department of Communication and Media Studies, Sacred Heart University, 5151 Park Avenue, Fairfield, Connecticut 06825. Send submissions by e-mail to spgottlieb@aol.com

We invite articles on all aspects of Hitchcock's life, works, and influence, and encourage a variety of critical approaches, methods, and viewpoints. For all submissions, follow the guidelines of the *Chicago Manual of Style*, using full notes rather than works cited format. We prefer submissions by e-mail, in any standard word processing format, which makes it easier to circulate essays for editorial review. The responsibility for securing any permissions required for publishing material in the essay rests with the author. Illustrations may be included, but as separate JPG or TIF files rather than as part of the text file. Decision time is normally within three months. The submission of an essay indicates your commitment to publish it, if accepted, in the *Hitchcock Annual*, and that it is not simultaneously under consideration for publication elsewhere.

For all orders, including back issues, contact Columbia University Press, 61 West 62nd Street, New York, NY 10023; www.columbia.edu/cu/cup

The *Hitchcock Annual* is indexed in the *Film Literature Index* and *MLA International Bibliography*.



Columbia University Press New York