

Spatial prediction models for landslide hazards: review, comparison and evaluation

A. Brenning

Institute of Medical Informatics, Biometry and Epidemiology, University of Erlangen-Nürnberg, Erlangen, Germany

Received: 18 July 2005 – Revised: 15 September 2005 – Accepted: 28 October 2005 – Published: 7 November 2005

Part of Special Issue “Spatial prediction modeling in natural hazards and risk”

Abstract. The predictive power of logistic regression, support vector machines and bootstrap-aggregated classification trees (bagging, double-bagging) is compared using misclassification error rates on independent test data sets. Based on a resampling approach that takes into account spatial autocorrelation, error rates for predicting “present” and “future” landslides are estimated within and outside the training area. In a case study from the Ecuadorian Andes, logistic regression with stepwise backward variable selection yields lowest error rates and demonstrates the best generalization capabilities. The evaluation outside the training area reveals that tree-based methods tend to overfit the data.

1 Introduction

The spatial prediction of landslide hazards is one important field of geoscientific research in which statistical classification rules have been applied. The aim of these methods is to identify areas that are susceptible to future landsliding, based on the knowledge of past landslide events and terrain parameters, geological attributes and other, possibly anthropogenic environmental conditions that are associated with the presence or absence of such phenomena.

The primary objective of modelling landslide hazards is the prediction of landslide-prone areas in space and/or time. This contrasts with other areas of geomorphological research, where similar classification problems occur, but where the analysis of observed distribution patterns as related to environmental conditions is of primary interest. For instance, Brenning (2005) applied logistic regression analysis to determine factors influencing the spatial distribution of rock glaciers. Based on this analysis, he characterized the geomorphological niche of rock glaciers as related to topography (size of the contributing area, horizontal curvature) and climate (temperature, solar radiation).

Correspondence to: A. Brenning
(alexander.brenning@alumni.hu-berlin.de)

The question whether the analysis or prediction is the main goal influences the choice of methods and error measures to be studied. In the present work, the focus is on prediction. Predictors of landslide hazard distribution are fitted or “trained” on a training data set of observed landslide distribution and thematic data such as morphometric attributes (slope, aspect etc.) and information on land use (deforestation, proximity to road, and other variables). In this predictive context, the misclassification rate as measured on test data sets is the primary quantitative measure for evaluating the predictive power of a classification rule.

The objective of the present work is to review the present practice of applied spatial landslide hazard modelling as reflected by the scientific literature, and to compare selected statistical classification rules in a case study. Evaluation techniques are introduced that take into account the spatial structure of the prediction problem and control spatial overfitting.

Two scenarios for the preparation of susceptibility maps are distinguished: First, if multi-temporal landslide inventories are available, successions of landslide distribution patterns and land use may be used to predict future events. Specifically, and along the lines of time series analysis, a classifier is trained to predict landslide distribution at time point t_1 given environmental data from time points t_0 and t_1 , and landslide distribution at time point t_0 as explanatory variables. Multi-temporal information is particularly important since future landslide hazards partly depend on the scarps of past events (Casadei et al., 2003) and should therefore be modelled conditional on these. This will be done in the case study, which is based on data from Stoyan (2000).

On the other hand, often multi-temporal inventories or precise knowledge on landslide age are lacking, and only the current distributional pattern can be used to identify susceptible areas (Atkinson and Massari, 1998; Ohlmacher and Davis, 2003).

Regarding the evaluation of predictive landslide modelling techniques, this work proposes to adapt the cross-validation technique (Efron and Gong, 1983; Efron and Tibshirani, 1986) to estimate misclassification errors of spatial

and spatio-temporal prediction problems. Cross-validation is a computationally-intensive estimation technique that is based on subsequently partitioning a data set into subsets for training and testing the classifier. It is important that the test data is independent of the training data; an appropriate re-sampling scheme will therefore be proposed.

2 Basic concepts and techniques

2.1 Classifiers

A classifier is a mathematical mapping that assigns an object to a class based on known covariates describing the object. It is fitted to or trained on a given training data set. This data set consists of objects (here: grid points) with known class membership (here: landslide or non-landslide) and a set of also known covariates representing possibly relevant environmental conditions such as morphometry (slope, curvature, distance to ridge and others), land use and land cover (vegetation, infrastructure). Given a set of objects with known covariates, the classifier may be used to predict the (most likely) class membership. In some instances, it is desirable to predict the probability of class membership instead of the class membership itself.

A great variety of classification methods has been developed by researchers in the fields of statistics and machine learning (Hand, 1997). Common statistical approaches are logistic regression (Hosmer and Lemeshow, 2000) and discriminant analysis, both of which are based on linear combinations of the explanatory variables. More recent developments include support vector machines (SVM; Vapnik, 2001), artificial neural networks (ANN), and bootstrap-aggregated classification trees (Breiman, 1996; Hothorn and Lausen, 2003). Logistic regression, SVM and bootstrap-aggregated classification trees will be presented and applied later in this work (Sect. 5).

2.2 Error rates

The *misclassification rate* or *error rate* is one measure of model performance. It is defined as the total proportion of objects in a data set that is wrongly classified, i. e. of landslide grid points being predicted as non-landslides (false negatives) and of non-landslide points being predicted as landslides (false positives).

An error rate that is measured on the training data set is called the *apparent* misclassification error. This error rate will not reflect the performance of the classifier on a test data set. It will rather be too optimistic, i. e. a biased estimator of the *conditional* or *true* error rate of the classifier on an infinite test data set from the same distribution as the training data set (Hand, 1997). The conditional error rate is the quantity of interest in the assessment of classification rules.

An important property of the objects in a test data set is to be independent of the objects in the training data set. This poses a problem in the context of spatial data, where independence between two observations may in many applications

A. Brenning: Spatial prediction models for landslide hazards

only be assumed if their distance is greater than some threshold, the range of autocorrelation, which may be empirically estimated from the data set (Cressie, 1993).

Further parameters related to the error rate are the sensitivity, i. e. the proportion of correctly predicted landslide points, and the specificity, which measures the proportion of correctly predicted non-landslide points. Depending on the purpose of a study and on the cost associated with false-positive and false-negative predictions, the sensitivity or the specificity may be of different relevance in practice (Saisana et al., 2004).

2.3 ROC plots

Many predictive modelling techniques such as logistic regression provide predictions of landslide probability instead of directly predicting the presence or absence of a landslide. This makes it easier to adjust the classification rule to restrictions on sensitivities and specificities, and it also enables us to assess the model's predictive power independently of a specific probability threshold that may be chosen to classify a grid point as a potential landslide or non-landslide area. Receiver-operating characteristic (ROC) plots can be used for this purpose (Zweig and Campbell, 1993). These curves are obtained by plotting all combinations of sensitivities (on the y-axis) and proportions of false-negatives ($1 - \text{specificity}$; on the x-axis) that may be obtained by varying the decision threshold.

The information contained in this plot is often summarized by the area under the ROC curve (AUROC; Hosmer and Lemeshow, 2000). This threshold-independent measure of discrimination between both classes takes values between 0.5 (no discrimination) and 1 (perfect discrimination). As for the error rates, the AUROC may be determined on test or training data sets, the latter being referred to as apparent AUROC in the present work.

2.4 Success rate and prediction rate curve

Two types of plots that are similar to the ROC curve have frequently been used in landslide susceptibility modelling: the success rate and prediction rate curves (cf. Chung and Fabbri, 2003). The success rate curve is obtained by varying the decision threshold and plotting the respective sensitivities against the total proportions of the data set classified as landslide. This may be done on independent test data sets or for the training data set, in which case the curve will here be called apparent success rate curve.

Prediction rate curves are the same as success rate curves, except that they are computed for landslide distribution patterns (possibly in the training area) for a time point posterior to the training data set's temporal domain.

3 Review of modelling approaches

A review of recent publications reveals a large number of papers and conference contributions dealing with predic-

Table 1. Review of predictive modelling and evaluation approaches used in landslide modelling.

Citation	Method	Covariates	Training data	Evaluation
Ardizzone et al. (2002)	Discriminant analysis	Morphometry, geology, land use	All grid points?	Apparent error rate: 22–23%; disagreement between models based on different inventories: 15.5%
Atkinson and Massari (1998)	Logistic regression	Morphometry, geology, vegetation	442 rupture zone centers; 1458 non-landslide cells	Apparent success rates
Ayalew and Yamagishi (2005)	Logistic regression	Morphometry, geology, proximity to roads	All grid points (1 054 768 cells)	Apparent AUROC: 0.836, Pseudo-R ² : 0.195
Beguiría and Lorente (2002)	Logistic regression	Morphometry, satellite and thematic data	All grid points?	Apparent error rate: 32%
Chi et al. (2002)	Fuzzy inference network	Morphometry, geology, forest data	All grid points?	Training and test areas; prediction rate curves
Chung et al. (2002)	Favourability functions, fuzzy sets	Morphometry, geology, thematic data	All grid points (437,019 cells)	Temporal prediction rate curve
Chung and Fabbri (2003)	Likelihood ratio model			Success rates in separate test areas and for future slides
Gorsevski et al. (2000)	Logistic regression, probit and complementary log-log model	Morphometry	Sample of grid points	Apparent AUROC: 0.713–0.716 sensitivity 59%, specificity 70%
Lee et al. (2003)	Artificial neural networks	Morphometry, vegetation, soils	Random sample	Separate test area
Ohlmacher and Davis (2003)	Logistic regression	Slope, aspect, geology, soils	2,022,861 cells	None
Santacana et al. (2003)	Discriminant analysis	Morphometry, thematic data	Random sample 140+140 points;	Apparent error rate: 18%
van Westen et al. (2003)	Heuristic “weights of evidence”	Slope, geology, thematic data	All grid points	Apparent success rate curve

tive modelling of landslide hazards and the preparation of statistically-based susceptibility maps. Table 1 gives an overview of methods and data that have been used recently.

Logistic regression and discriminant analysis are the most frequently chosen models. Likelihood ratio methods (Chung, 2003), which are kernel-based classifiers, are also popular (cf. Chung and Leclerc 2003 for a review).

Statistical methods, if used for statistical inference, rely on distributional assumptions, one of which is usually the independence of the observations. This independence assumption is violated in the case of sufficiently dense, especially gridded data, yielding e.g. invalid significance statements (Ohlmacher and Davis, 2003; Ayalew and Yamagishi, 2005) or invalid estimates of landslide probabilities aggregated over a surface (Chung and Fabbri, 2004, p. 165). In the case of logistic regression, there are appropriate methods available that explicitly model spatial autocorrelations (Augustin et al., 1996; Gotway and Stroup, 1997; Venables and Ripley, 2002). One such method is applied later in this work.

If prediction is the primary task of hazard modelling, the analytical value of classifiers and hence the importance of

the significance of explanatory variables may be put aside, and the evaluation of error and success rates as defined above will deserve greater attention. However, a great part of the published work measures the predictive power on the training data set, yielding a too optimistic assessment if compared to estimates obtained on independent test data sets.

Some authors use either test data from the training area but for a different time period for evaluation (Chung et al., 2002; Chung and Fabbri, 2003), or data from an adjacent test area (Chung and Fabbri, 2003). Since landslide causes and characteristics may vary systematically in space (e.g. due to different geological conditions) and in time (e.g. due to different triggering rainfall intensities), they are drawn from different distributions, and estimated error rates or success rate curves are hardly transferrable from one particular test data set to the general landslide distribution in the study area. On the other hand, if a random subset of the landslide population is set aside (Santacana et al., 2003), spatial dependencies between training and test data points separated by small distances may produce too optimistic error estimates. Consequently, the estimated error rates depend to a different extent

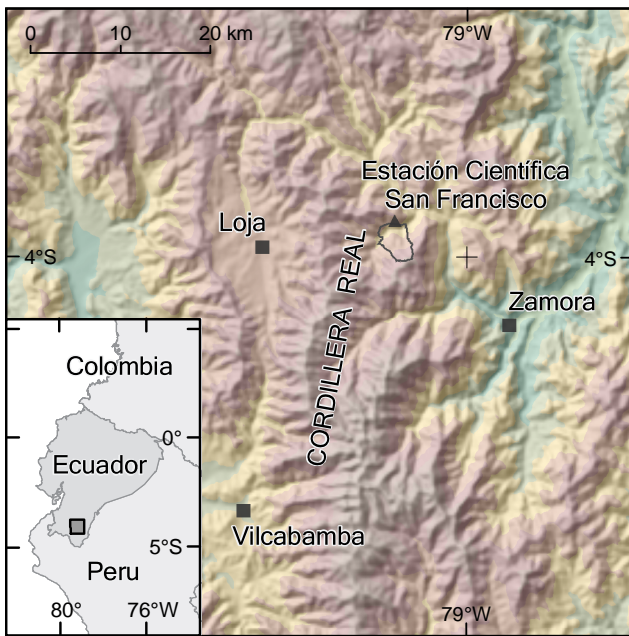


Fig. 1. Location of the study area.

on the generalization capabilities of the classifiers. Different evaluation strategies are therefore systematically compared in the following case study.

4 Study area

The case study focuses on the surroundings of the Estación Científica San Francisco (ECSF) in the Andes of Southern Ecuador at $4^{\circ}1'S$ and $79^{\circ}5'W$ (Fig. 1). The ECSF area has been investigated since the year 2000 within the compound project “Functionality in a Tropical Mountain Rainforest” funded by the German Research Foundation (DFG). The aim of this multidisciplinary research project is to analyze the rainforest ecosystem of Southern Ecuador and to elaborate options for its sustainable use. This ecosystem is one of the hot spots of biodiversity on Earth (Beck and Müller-Hohenstein, 2001; Bussmann, 2001; Richter, 2003).

The study area comprises 11.2 km^2 and extends from 1720 to 3160 m a.s.l. Landslides were inventoried by Stoyan (2000) at a scale of 1:8800. A total area of 0.94 km^2 was classified as active or inactive mass movements in the transition between shallow transitional landslides and debris flows (Corominas, 1996; Stoyan, 2000). Landslide inventories were compiled for the years 1962, 1969, 1976, 1989 and 1998.

Vegetation is dominated by mountain rainforests and páramo. Slashing and burning and subsequent grazing take place in the lower, northwestern part of the mapping area along the road from Loja to Zamora. Landslide incidence is highest in these intervened areas.

5 Methods

Using geomorphometric attributes and information on land use, several statistical classifiers are applied to predict landslide incidence in the study area. The predictive capabilities of these competing methods are compared based on misclassification error rates estimated using spatial and spatio-temporal cross-validation approaches on independent test data sets. The spatio-temporal prediction situation consists of training classifiers based on all 1989 and pre-1989 data, and to predict with this classifier post-1989 (i. e. year 1998) landslides based on the knowledge of pre-1998 landslides and of land-use data of 1998. Conditions of 1989 are referred to as “present” and 1998 as “future”. These future landslides are only used for error estimation as described below, not for training classifiers.

In general terms, different classifiers are fitted to training data sets, and error rates are measured on the following four types of independent test data sets: (1) Test points scattered within the spatial domain of the training area, corresponding to present conditions (*spatial intra-domain error*), (2) test data within the spatial domain of the training area, but corresponding to the future inventory (*spatio-temporal intra-domain error*), (3) test points outside the spatial domain of a restricted training area representing present-day conditions (*spatial extra-domain error*), and (4) test data outside the training area and representing future conditions (*spatio-temporal extra-domain error*). Independent test and training data sets are obtained by applying empirically-derived distance buffers as described below in section 5.2

The difficulty of temporal and of extra-domain prediction lies in possible differences in the stochastic distribution of landslide events outside the spatial and temporal domain of the training data set. Algorithms that are able to generalize from the training data are expected to achieve better results in these settings than algorithms that tend to overfit the peculiarities of the training data.

Automated methods for training classification rules are used in the present work. This approach allows to automatically replicate training and test data sets and to apply cross-validation to the estimation of misclassification error. This would not be possible with classical statistical model-based approaches, which rely on more or less interactive model fitting by an expert. In addition, a qualitative comparison of model-based and data-driven approaches is presented in the discussion.

All analyses are performed within the open-source data analysis environment *R* (version 1.9.1; R Development Core Team, 2004).

5.1 Classifiers

In the case study, several variants of traditional and more recent classification methods are applied, ranging from logistic regression over support vector machines to bagging and double-bagging. Artificial neural networks are not used here because of the need for an adjustment of several hyperpa-

rameters (number of layers, type of weight decay), which is beyond the scope of this study (cf. Lee et al., 2003).

Logistic regression is a generalized linear model for binary response variables (Hosmer and Lemeshow, 2000). In order to model the probability p of a positive outcome conditional on the covariates, p is transformed from the interval $]0, 1[$ to its logit $\ln(p/(1-p))$. Logits are unbounded quantities and can be modelled linearly. Linear model coefficients are interpreted in terms of multiplicative changes in the odds $p/(p-1)$ as a function of a risk factor. Logistic regression is therefore a somehow natural way of analyzing the effect of risk factors on hazard susceptibility. In the present work, logistic regression is performed both after applying an automatic stepwise backward variable selection based on the Akaike Information Criterion (AIC), which penalizes for the number of explanatory variables (acronym *glmstep*), and using all available variables without selection (*glm*).

Spatial data are frequently autocorrelated up to a certain distance called the range of autocorrelation (Cressie, 1993). Classical logistic regression, which assumes independent observations, will therefore yield wrong significance statements for model coefficients. A variant of logistic regression that honors spatial autocorrelation (*glm spat*) is included here. It is based on penalized quasi-likelihoods and implemented in the *R* function `glmPQL` (Venables and Ripley, 2002). The iterative fitting algorithm is numerically more demanding and less stable than the one used for ordinary logistic regression. Therefore only a manually preselected set of (the most important) geomorphometric and thematic covariates could be used in the present context of repeated automated model fitting. The spatial correlation structure was represented by a fixed spherical correlogram with a range parameter of 180 m as derived from empirical residual correlograms of an ad-hoc ordinary logistic regression.

Support vector machines are a more recently developed method that is based on nonlinear transformations of the covariates into a higher-dimensional feature space (Vapnik, 2001). In this space, an optimal separating hyperplane is computed. In this work, C-classification is performed with radial basis functions as kernels, and shrinking heuristics are applied. The SVM implementation of the *R* package `e1071`¹ is used with default parameter settings.

Classification trees recursively split the covariate space into disjoint subsets (Breiman et al., 1984). These subsets are assigned to one of the classes, landslide or non-landslide. An object from the test data set is dropped down the tree in order to determine the subset it belongs to and hence to predict its class membership.

Since classification trees are instable with respect to slight modifications of the training data set, bootstrap-aggregation techniques such as bagging have been proposed (Breiman,

1996). Bagging consists of training separate classification trees on random subsamples of the data set. The bootstrap-aggregated prediction is obtained by majority voting among these trees. In this work, 25 bootstrap replications are used.

Double-bagging (Hothorn and Lausen, 2003) is an extension of bagging that combines classification trees with other classifiers, in this work with stabilized linear discriminant analysis (Läuter, 1992; *dbagslda*), logistic regression (*dbagglm*) and SVM (*dbagsvm*). Specifically, one of these classifiers is trained on the out-of-bag sample, i.e. the part of the training data set that is not included in the bootstrap sample. The prediction function of this classifier (in the case of discriminant analysis, the discriminant function) is used as an additional covariate in bootstrap-aggregated tree growth. This makes predictions smoother and more efficient than in bagging, and uses the information contained in the out-of-bag sample. Bagging and double-bagging are implemented in the *R* package `ipred`².

5.2 Estimation of error rates

Misclassification rates are used to compare the predictive power of classifiers. While in a practical context different cost may be associated with both error types (false-positives and false-negatives), here both are treated as equally important since a more appropriate cost function is not available. Furthermore, independently of the proportion of landslide and non-landslide areas in the inventory maps, all analyses presented here are based on balanced training and test data sets of 50% landslide and 50% non-landslide samples. These simplifications were made in order to focus on differences between the classifiers that are independent of the actual prevalence of landslides.

Traditional cross-validation is based on partitioning the set of observations into equally-sized subsets to train the classifier on all but one of these subsets and test it on the remaining one (Efron and Gong, 1983; Efron and Tibshirani, 1986). Errors measured on these test data sets are averaged over all test data sets in order to obtain an overall error estimate. Cross-validation assumes that (pairs of) observations in different subsets of the partition are independent. In a spatial context, this is not easy to achieve.

The following procedure is used to extract appropriate test and training data sets from the gridded landslide inventory: First, an empirical correlogram was estimated from the (logit-scale) residuals of an ad-hoc logistic regression model of landslide distribution. The correlogram shows an approximate range parameter of 180 m, indicating that the random component of landslide susceptibility distribution is autocorrelated at distances below this threshold. If the random field is assumed to be second-order stationary and Gaussian, model errors at pairs of points more than 180 m apart may be considered independent. If the assumptions do not hold, the

¹by D. Meyer, Institute of Information Systems, Vienna University of Economics and Business Administration, based on code by Chih-Chung Chang and Chih-Jen Lin, Department of Computer Science and Information Engineering, National Taiwan University, Taipei.

²by T. Hothorn, Institute of Medical Informatics, Biometry and Epidemiology, University of Erlangen-Nürnberg, Erlangen, Germany.

mentioned minimum distance between points is a necessary condition for independence. It is therefore an important constraint for spatial cross-validation that the minimum distance of each test data point to the training data points is greater than the correlogram range.

In the present case study, first a set of 20 landslide and 20 non-landslide grid points is sampled from the study area in order to use it as a spatial test data set for the prediction of “present-day” (1989) landslide distribution. In addition, for spatio-temporal error estimation, samples of the same size are drawn from the inventory of “future” (1998) landslides. Based on the mentioned ad-hoc estimate of the correlogram range of ~ 180 m, all grid points within this distance from both test data sets are excluded from the area from which the training data set is drawn randomly.

The size of the training data set is varied in order to determine how the different methods are able to deal with an increasing spatial dependence of the data. The largest training data set consists of 1600 landslide and 1600 non-landslide points. It is split into two disjoint data sets of 800+800 and then four data sets of 400+400 points each.

This procedure of sampling both 20+20 test samples and an independent 1600+1600 training data set is repeated 50 times independently. Spatial and spatio-temporal intra-domain error rates are estimated on the corresponding test data sets. These estimates based on independent test data sets are estimates of the respective conditional misclassification rate.

Since it is not only desirable to achieve good predictions within the area spanned by the training data set, in a second evaluation approach the ability of predicting spatial trends beyond the training area is measured by means of extra-domain error rates. For this purpose, two subareas in the extreme southwest and northeast are used as test areas. These subareas, which comprise about half the mapping area, represent an intervened area with high landslide incidence and a high-elevation area with low incidence. The area from which training data sets are drawn is separated from the test areas by a 180 m wide buffer in order to achieve independence. Both spatial and spatio-temporal error rates are calculated for the test areas.

The estimated error rates are compared to the results of the best classifier for each of the scenarios by means of a paired t-test. To adjust for multiple testing, a Bonferroni correction was applied to control family-wise error rates (Westfall and Young, 1993). The Bonferroni correction consists of multiplying all p-values by the total number of tests performed in an analysis.

5.3 Explanatory variables

Digital elevation models (DEM) have become inexpensive sources of topographic information and hence a data base for the computation of geomorphometric attributes that are related to mass movements. For the present case study, a set of standard topographic attributes has been derived from a DEM created by Stoyan (2000), which is based on contour

lines and corrected according to air photos and field measurements. The nominal resolution of the DEM is 5 m. Similar to the papers discussed earlier in this work, the terrain parameters used range from local parameters (elevation, slope, aspect, plan, profile and total curvature, convergence index) to parameters that depend on topological site characteristics (contributing area, its height, mean slope and mean aspect; vertical distance to channel network and from ridge). In the case of skewed variables or variables for which a nonlinear relationship is to be expected, simple transforms (logarithm; binary splits such as “distance to past landslides smaller than 200 m”) were added without regard of the covariates’ actual empirical relation to the response, i. e. without fitting the covariates to the data manually. Terrain parameters were computed using the software SAGA³.

Multi-temporal land use and deforestation patterns in the study area as compiled by Stoyan (2000) were used as additional covariates. These covariates are categorical variables such as a binary variable representing the polygonal deforestation areas. In addition, distance parameters were computed for such areas, and a set of binary splits of these variables was produced (e.g. “distance to road smaller than 200 m”). Reliable geological information is not available at the scale of the inventory.

6 Results

6.1 Extra-domain error rates

Logistic regression with stepwise variable selection achieved the lowest estimates of conditional error rates both for the spatial prediction of “present” landslides and the spatio-temporal prediction of “future” landslides outside the training area. This is true for all sizes of training data sets considered. Best results are obtained for the largest training data sets, the overall optimum being an error rate of 0.24 for present and 0.32 for future landslides (Table 2). This method is followed by logistic regression without variable selection in the case of spatial prediction, and by logistic regression with spatial autocorrelation structure in the case of future landslides.

SVM achieve average results as regards estimates of conditional error rates, with comparatively better results for present landslides than for future ones. Bagging and double-bagging perform considerably worse than the other methods regarding the conditional error estimates. There are no great differences within this group of classifiers, independently of the method trained on the out-of-bag sample.

6.2 Intra-domain error rates

Error rates obtained for independent test points within the spatial domain of the training data set show a different behavior compared to the extra-domain error rates (Table 3).

³by O. Conrad, Geographical Institute, University of Göttingen, Germany.

Table 2. Extra-domain error rates for present and future landslide prediction.

Classifier	Spatial error rate				Spatio-temporal error rate			
	3200	1600	800	400	3200	1600	800	400
glmstep	0.238	0.247	0.261	0.283	0.324	0.329	0.340	0.355
glm	0.263	0.276	0.297	0.327	0.371	0.379	0.390	0.406
glm spat	–	0.339	0.347	0.354	–	0.333	0.330	0.332
svm	0.327	0.302	0.302	0.321	0.386	0.372	0.370	0.384
bagging	0.376	0.375	0.385	0.385	0.418	0.422	0.413	0.404
dbagslda	0.482	0.454	0.429	0.409	0.450	0.428	0.409	0.399
dbagglm	0.449	0.447	0.407	0.388	0.449	0.435	0.413	0.403
dbagsvm	0.382	0.376	0.387	0.391	0.426	0.420	0.413	0.405

Table 3. Intra-domain error rates for present and future landslide prediction.

Classifier	Spatial error rate				Spatio-temporal error rate				Apparent error rate			
	3200	1600	800	400	3200	1600	800	400	3200	1600	800	400
glmstep	0.290	0.295	0.301	0.317	0.343	0.344	0.351	0.358	0.187	0.186	0.181	0.171
glm	0.317	0.315	0.329	0.345	0.350	0.352	0.359	0.378	0.176	0.171	0.161	0.137
glm spat	–	0.338	0.339	0.334	–	0.327	0.314	0.336	–	0.267	0.264	0.240
svm	0.326	0.319	0.319	0.324	0.343	0.340	0.330	0.337	0.117	0.127	0.133	0.133
bagging	0.379	0.330	0.313	0.310	0.374	0.348	0.344	0.332	0.001	0.001	0.001	0.002
dbagslda	0.370	0.335	0.310	0.312	0.381	0.360	0.345	0.334	0.001	0.001	0.001	0.001
dbagglm	0.354	0.331	0.311	0.310	0.370	0.352	0.333	0.332	0.000	0.001	0.001	0.002
dbagsvm	0.373	0.337	0.316	0.312	0.361	0.349	0.338	0.335	0.001	0.001	0.001	0.002

In the case of conditional error rates for the distribution of present landslides, logistic regression with variable selection (*glmstep*) generally achieves the best results (lowest error rate: 0.29). For small sample sizes, error rates slightly increase, and there is no significant difference if compared to bagging and double-bagging predictors. These overfit, yielding highest error rates for large sample sizes. SVM does a good job for all sample sizes.

As regards the prediction of future landslides within the spatial training domain, logistic regression with spatial dependence (*glm spat*) achieves lowest estimated conditional error rates. However, there is no significant difference compared to the other classifiers, since the general variability of error rates is greater than in the previous setting.

Estimated apparent error rates are much lower than the previously presented unbiased estimates of the conditional misclassification rate. Tree-based methods achieve apparent error rates < 1%, while SVM and logistic regression yield apparent error rates of more than half the unbiased estimates of the conditional error.

Since apparent error rates may be taken as (possibly too optimistic) upper bounds of the true error rate (Hand, 1997), and since *glm spat* generally performed quite well on independent test data, it is suggested that logistic regression with stepwise variable selection is very close to the minimum error rates that may be achieved with this class of classifiers

and the covariates at hand. The estimated extra-domain error rates are lower than intra-domain errors. This can be attributed to the circumstance that the proportion of probably man-made landslides is greater in the test area than in the training area; man-made landslides are apparently easier to predict than landslides in the less intervened areas.

6.3 Susceptibility maps

Figure 2 shows susceptibility maps for spatial intra-domain prediction using logistic regression with variable selection, double-bagging combined with logistic regression, and support vector machines.

Logistic regression shows a smooth prediction surface, except for areas with changes in the categorical variables such as land-use boundaries or pre-existing landslide scarps. SVM predictions look similar, but show finer spatial structuring because the method incorporates more complex variable transformations into the predictor. Interestingly, SVM predicts an altitudinal increase in landslide susceptibility towards the mountain situated in the extreme southeast of the study area. This (unrealistic) feature is missing in the logistic regression map.

In contrast to logistic regression, the tree-based predictions of bagging and double-bagging are not continuous functions of the covariates. They produce a complex predic-

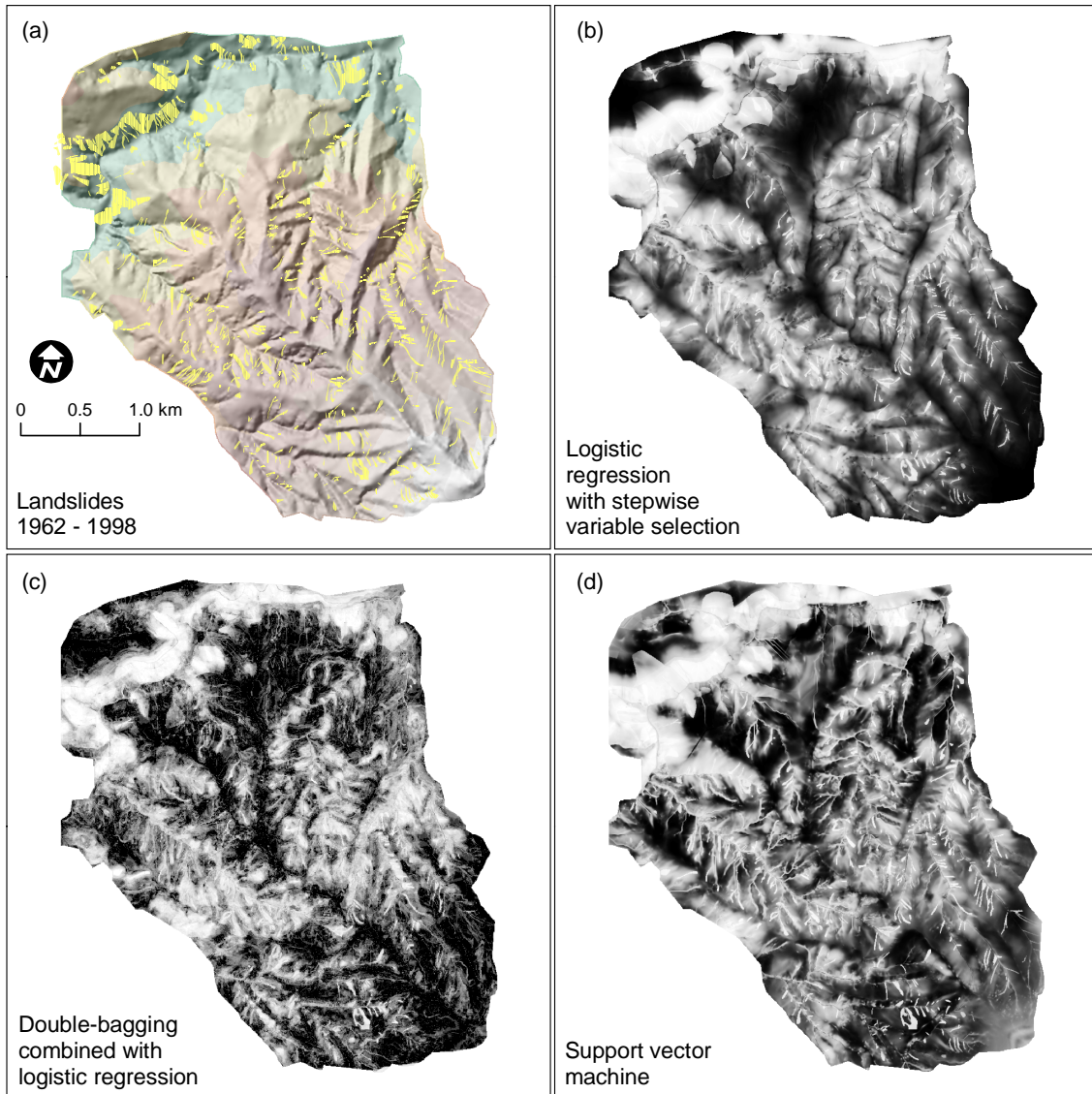


Fig. 2. (a) The overall distribution of landslides (yellow), and, (b)–(d), landslide susceptibility maps produced with logistic regression, double-bagging and support vector machines.

tion pattern with isolated grid points of high susceptibility and some abrupt changes within short distances. These patterns hinder the construction of susceptibility maps that can be used in practice at the given scale, since individual high-susceptibility grid points are spread over the entire mapping area. The higher generalization capability of SVM and especially of logistic regression are desirable features for hazard zonation.

6.4 Stability considerations

Both SVM and tree-based method are very stable algorithms. Ordinary logistic regression is also rather stable, but is subject to the limitations of any linear model regarding the non-collinearity of covariates. This sometimes causes problems in the case of automated stepwise variable selection with

many covariates, especially when interaction terms are involved, which was avoided here for this reason.

Logistic regression with spatial autocorrelations as implemented by `glmPQL` in *R* was the least stable method. Some subjectively less relevant covariates could not be included in these models since the full set of variables frequently produced errors. In addition, 512 MB of RAM were not enough for `glmPQL` to run on a training data set of 3200 autocorrelated points. This method was also by far the slowest one.

7 Discussion

The results of the case study show that logistic regression with stepwise variable selection is flexible enough to compare favorably with machine-learning algorithms such as SVM and double-bagging. In contrast especially to the lat-

ter, overfitting is not a serious problem for logistic regression. Differences between the classifiers were greatest for predictions outside the training area (extra-domain error rates).

The large differences between biased apparent error rates and “true”, conditional error rates underlines the importance of using a spatial cross-validation technique based on replicated independent test data sets. This is crucial in the case of highly flexible machine-learning algorithms, and less problematic if logistic regression is applied.

Regarding the model-based representation of spatial dependence in logistic regression, the results obtained with `glmPQL` suggest that a statistically correct model is not needed to achieve good predictive properties. However, if statistical inference on model coefficients are a secondary objective for analytical purposes, an adequate representation of the spatial autocorrelation structure is mandatory, but subject to the uncertainties of fitting a covariance structure to the data.

Logistic regression and SVM produce sufficiently smooth prediction surfaces as for creating landslide susceptibility maps. Tree-based methods are more prone to producing spatial artifacts such as sudden changes in predicted landslide probability on rather smooth terrain surfaces.

While only automatic model-building algorithms have been considered so far, the interactive, manual analysis and variable selection in conjunction with logistic regression is a serious alternative. Experienced spatial modelers will easily recognize certain (univariate) nonlinearities in the relationship between the response variable and a covariate, or the need for applying transformations to the data. These data modelling tasks may also be achieved by flexible machine-learning algorithms, but only at the risk of overfitting the training data. Human analysts, in contrast, make use of constraints that arise from their domain knowledge, which may especially be useful in the case of extra-domain predictions.

8 Conclusions

Logistic regression with stepwise variable selection is an adequate method for the prediction of landslide susceptibility. In the present case study, this method compares favorably to machine-learning classifiers, which are more prone to overfitting. In addition, variants of logistic regression that are able to represent spatial autocorrelation structures may be applied for analytical purposes.

Even if a purely data-driven approach is used, the estimated apparent and more relevant conditional error rates demonstrate how important it is to take into account spatial autocorrelations during model evaluation.

Beyond the use of misclassification error rates, related quality measures such as the sensitivity and specificity of the classifier will have to be controlled in practice, depending on the specific aims of a susceptibility map to be created. For this purpose, appropriate cost functions have to be defined for both error types. It will be of particular importance to

account for the spatial variability of these cost functions depending on infrastructure and land use.

Acknowledgements. The author thanks R. Stoyan, Erlangen, for providing the landslide inventory and additional thematic data from the ECSF area.

Edited by: T. Glade

Reviewed by: G. Dubois and another referee

References

- Allison, R. J., ed.: Applied geomorphology, Wiley, 2002.
- Ardizzone, F., Cardinali, M., Carrara, A., Guzzetti, F., and Reichenbach, P.: Impact of mapping errors on the reliability of landslide hazard maps, *Nat. Hazards Earth Syst. Sci.*, 2, 3–14, 2002, **SRef-ID: 1684-9981/nhess/2002-2-3**.
- Atkinson, P. M. and Massari, R.: Generalised linear modelling of susceptibility to landsliding in the Central Apennines, Italy, *Comp. Geosci.*, 24, 373–385, 1998.
- Augustin, N. H., Muggleston, M. A., and Buckland, S. T.: An autologistic model for the spatial distribution of wildlife, *J. Appl. Ecol.*, 33, 339–347, 1996.
- Ayalew, L. and Yamagishi, H.: The application of GIS-based logistic regression for landslide susceptibility mapping in the Kakuda-Yahiko Mountains, Central Japan, *Geomorphology*, 65, 15–31, 2005.
- Beck, E. and Müller-Hohenstein, K.: Analysis of undisturbed and disturbed tropical mountain forest ecosystems in Southern Ecuador, *Die Erde*, 132, 1–8, 2001.
- Beguiría, S. and Lorente, A.: Damocles. Debrisfall assessment in mountain catchments for local end-users, Tech. rep., Instituto Pirenaico de Ecología, Zaragoza, 2002.
- Breiman, L.: Bagging predictors, *Machine Learning*, 24, 123–140, 1996.
- Breiman, L., Friedman, J. H., Olshen, R. A., and Stone, C. J.: Classification and regression trees, Chapman & Hall / CRC Press, New York, 1984.
- Brenning, A.: Climatic and geomorphological controls of rock glaciers in the Andes of Central Chile: Combining statistical modelling and field mapping, Dissertation, Mathematisch-Naturwissenschaftliche Fakultät II, Humboldt-Universität zu Berlin, Berlin, urn:nbn:de:kobv:11-10049648, 2005.
- Bussmann, R. W.: Epiphyte diversity in a tropical andean forest – Reserva Biológica San Francisco, Zamora–Chinchipec, Ecuador, *Ecotropica*, 7, 43–60, 2001.
- Casadei, M., Dietrich, W. E., and Miller, N. L.: Testing a model for predicting the timing and location of shallow landslide initiation in soil-mantled landscapes, *Earth Surface Processes and Landforms*, 28, 925–950, 2003.
- Chi, K.-H., Park, N.-W., and Chung, C. F.: Fuzzy logic integration for landslide hazard mapping using spatial data from Boeun, Korea, in *Symposium on Geospatial Theory, Processing and Applications*, Ottawa, 2002.
- Chung, C. F.: Use of airborne geophysical surveys for constructing mineral potential maps, *Economic geology*, 11, 1–13, 2003.
- Chung, C. F. and Fabbri, A. G.: Validation of spatial prediction models for landslide hazard mapping, *Nat. Haz.*, 30, 451–472, 2003.

- Chung, C. F. and Fabbri, A. G.: Systematic procedures of landslide hazard mapping for risk assessment using spatial prediction models, in Glade et al. (2004), 140–173, 2004.
- Chung, C. F. and Leclerc, Y.: Use of quantitative techniques for zoning landslide hazard, in: Earthquake Hazard Mapping for Landuse and Emergency Planning, Summary of Conference Presentations, edited by: Levson, V. M. and Jonnes, S., Ministry of Energy, Mines and Petroleum Resources, British Columbia, Canada, 2003.
- Chung, C. F., Kojima, H., and Fabbri, A. G.: Stability analysis of prediction models for landslide hazard mapping, in Allison (2002), 3–19, 2002.
- Corominas, J.: Debris slide, in Dikau et al. (1996), 97–102, 1996.
- Cressie, N. A. C.: Statistics for spatial data, John Wiley & Sons, New York, 1993.
- Dikau, R., Brunnsden, D., Schrott, L., and Ibsen, M.-L. (eds.): Landslide recognition: identification, movement and causes, John Wiley & Sons, Chichester, 1996.
- Efron, B. and Gong, G.: A leisurely look at the bootstrap, the jackknife, and cross-validation, *American Statistician*, 37, 36–48, 1983.
- Efron, B. and Tibshirani, R.: The bootstrap method for standard errors, confidence intervals, and other measures of statistical accuracy, *Statistical Science*, 1, 1–35, 1986.
- Glade, T., Anderson, M., and Crozier, M. J. (eds.): Landslide hazard and risk, Wiley, 2004.
- Gorsevski, P. V., Gessler, P., and Foltz, R. B.: Spatial prediction of landslide hazard using logistic regression and GIS, in 4th International Conference on Integrating GIS and Environmental Modeling (GIS/EM4), Problems, Prospects and Research Needs, 2–8 September, 2000, Banff, Alberta, Canada, 2000.
- Gotway, C. A. and Stroup, W. W.: A generalized linear model approach to spatial data analysis and prediction, *Journal of Agricultural, Biological, and Environmental Statistics*, 2, 157–178, 1997.
- Hand, D. J.: Construction and assessment of classification rules, Wiley Series in Probability and Statistics, John Wiley & Sons, Chichester, 1997.
- Hosmer, D. W. and Lemeshow, S.: Applied logistic regression, John Wiley & Sons, New York, 2nd edn., 373 pp., 2000.
- Hothorn, T. and Lausen, B.: Double-bagging: combining classifiers by bootstrap aggregation, *Pattern Recognition*, 36, 1303–1309, 2003.
- Läuter, J.: Stabile multivariate Verfahren, Akademie Verlag, Berlin, 1992.
- Lee, S., Ryu, J.-H., Min, K., and Won, J.-S.: Landslide susceptibility analysis using GIS and artificial neural network, *Earth Surface Processes and Landforms*, 28, 1361–1376, 2003.
- Ohlmacher, G. C. and Davis, J. C.: Using multiple logistic regression and GIS technology to predict landslide hazard in northeast Kansas, USA, *Engineering Geology*, 69, 331–343, 2003.
- R Development Core Team: *R: A language and environment for statistical computing*, R Foundation for Statistical Computing, Vienna, Austria, <http://www.R-project.org>, 2004.
- Richter, M.: Using epiphytes and soil temperatures for eco-climatic interpretations in Southern Ecuador, *Erdkunde*, 57, 161–181, 2003.
- Saisana, M., Dubois, G., Chaloulakou, A., and Spyrellis, N.: Classification criteria and probability risk maps: limitations and perspectives, *Environmental Science and Technology*, 38, 1275–1281, 2004.
- Santacana, N., Baeza, B., Corominas, J., de Paz, A., and Marturiá, J.: A GIS-based multivariate statistical analysis for shallow landslide susceptibility mapping in La Pobla de Lillet area (Eastern Pyrenees, Spain), *Nat. Haz.*, 30, 281–295, 2003.
- Stoyan, R.: Aktivität, Ursachen und Klassifikation der Rutschungen in San Francisco/Südecuador, Diplomarbeit, Geographisches Institut, Univ. Erlangen–Nürnberg, Erlangen, Germany, 2000.
- van Westen, C. J., Rengers, N., and Soeters, R.: Use of geomorphological information in indirect landslide susceptibility assessment, *Nat. Haz.*, 30, 399–419, 2003.
- Vapnik, V. N.: The nature of statistical learning theory, *Statistics for Engineering and Information Science*, Springer, New York, 2nd edn., 2001.
- Venables, W. N. and Ripley, B. D.: Modern applied statistics with S, Springer, New York, 4th edn., 2002.
- Westfall, P. H. and Young, S. S.: Resampling-based multiple testing, Wiley, New York, 1993.
- Zweig, M. H. and Campbell, G.: Receiver-operating characteristic (ROC) plots, *Clinical Chemistry*, 39, 561–577, 1993.