



INSTALLATION INSTRUCTIONS



1

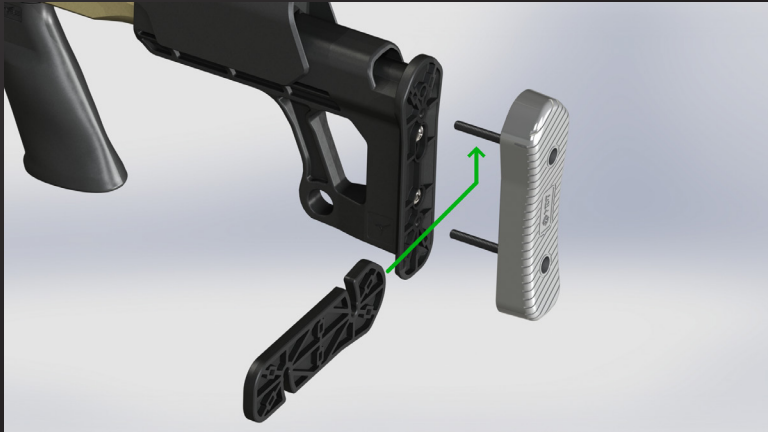


DANGER: Ensure that the firearm is safe and not loaded. Follow all rifle manufacturer recommendations for operation.



Adjusting the length of pull.

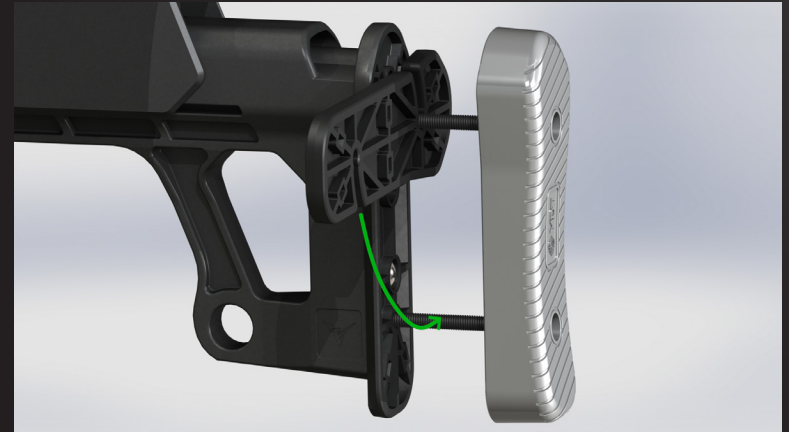
Loosen the two screws in the buttpad (try not to back them all the way out) and then insert the desired number of spacers (if any) you would like to add (each one adds 1/4"), twisting them in a counter-clockwise direction ensuring the thickest end ends up at the top, and they will click over the screws then tighten them back down.



2

Fit the top of the LOP spacer then let it fall into the bottom screw.

Once the LOP spacer has been fitted onto the upper screw let the spacer fall into the bottom screw. Assure the LOP spacer is in place and against the buttstock. Tighten down the buttpad.

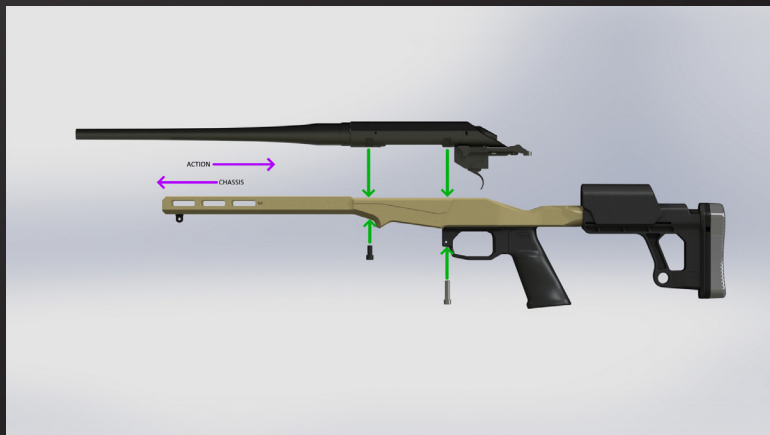


3

Drop your action into your new Trybe Defense chassis.



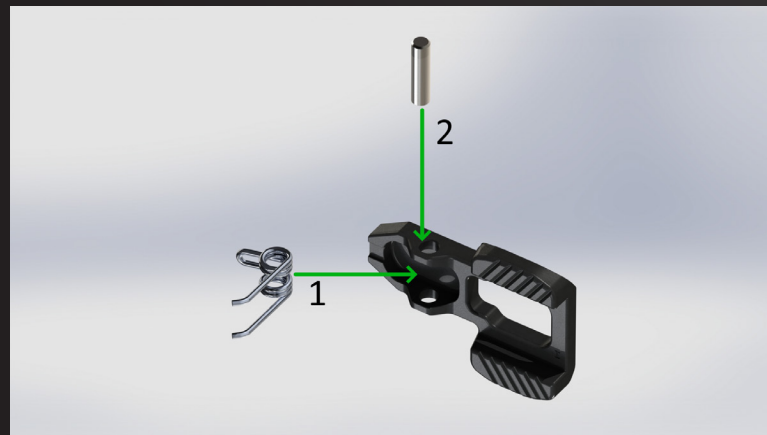
Line up your trigger with the hole in the trigger guard and place your action into the Trybe Defense Chassis. Push the action rearward into the chassis and insert the two provided action screws, torquing them to 65 in-lb.



4

Secure mag latch spring into the latch.

Place the spring into the pocket of the mag latch, ensuring the rounded part of the spring is pointed to the narrowest part of the latch and then align the holes in the spring coils with the holes in the latch and insert the slave pin to hold them together.



5

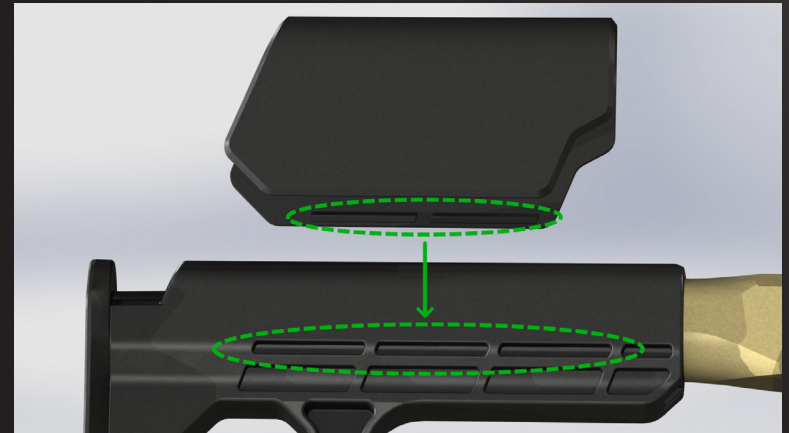
install the magazine latch into the chassis.

Slide the mag latch/spring assembly into the trigger guard ensuring the pin is centered and the legs of the spring are pointing up toward the action. Press on the mag latch to put the spring under tension to line up the holes then insert the roll pin into the trigger guard and gently hammer it into place, driving the slave pin out the other side.

**6**

Pick and install your cheek riser.

Choose the desired cheek riser from the chassis box (they come in 1/4" increments), align the tabs on the cheek riser with the slots on the buttstock and press it straight down with some force. Once in place, you will hear a click, if it doesn't seat and you don't hear the click, shift it forward/back until you hear the click. Cheek risers are not required but will help you get a good cheek weld to see through your optic.



TRYBEDEFENSE.COM

THIS IS NOT A FIREARM

THIS IS A RIFLE STOCK REPLACEMENT ACCESSORY ONLY