

Datasheet for ABIN7275165
LILRB2 Protein (AA 22-229) (His tag)



[Go to Product page](#)

6 Images

Overview

Quantity:	100 µg
Target:	LILRB2
Protein Characteristics:	AA 22-229
Origin:	Human
Source:	HEK-293 Cells
Protein Type:	Recombinant
Purification tag / Conjugate:	This LILRB2 protein is labelled with His tag.

Product Details

Purpose:	Human LILRB2/CD85d/ILT4 Domain1 & 2 Protein
Sequence:	Gln22-Val229
Characteristics:	Recombinant Human LILRB2/CD85d/ILT4 Domain1 & 2 Protein is expressed from HEK293 with His tag at the C-Terminus.It contains Gln22-Val229.
Purity:	> 95 % as determined by Tris-Bis PAGE,> 95 % as determined by HPLC
Sterility:	0.22 µm filtered
Endotoxin Level:	Less than 1EU per µg by the LAL method.
Biological Activity Comment:	Immobilized Human LILRB2 Domain1&2, His Tag at 0.5µg/ml (100µl/well) on the plate. Dose response curve for Anti-LILRB2 Antibody, hFc Tag with the EC50 of 3.2ng/ml determined by ELISA. The affinity constant of 6.5µM as determined in SPR assay (Biacore T200). See testing image for detail.

Target Details

Target:	LILRB2
Alternative Name:	LILRB2 (LILRB2 Products)
Background:	The immunoglobulin-like transcript (ILT) comprise a family of activating and inhibitory type immunoreceptors whose genes are located in the same locus that encodes killer cell Ig-like receptors (KIR). ILT4, also known as LIR-2 and LILRB2, is a type I transmembrane protein expressed primarily on monocytes and dendritic cells (DC). LILRB2 is a receptor for class I MHC antigens. Recognizes a broad spectrum of HLA-A, HLA-B, HLA-C, HLA-G and HLA-F alleles.
Molecular Weight:	24.2 kDa. Due to glycosylation, the protein migrates to 25-30 kDa based on Tris-Bis PAGE result.
Pathways:	Cellular Response to Molecule of Bacterial Origin

Application Details

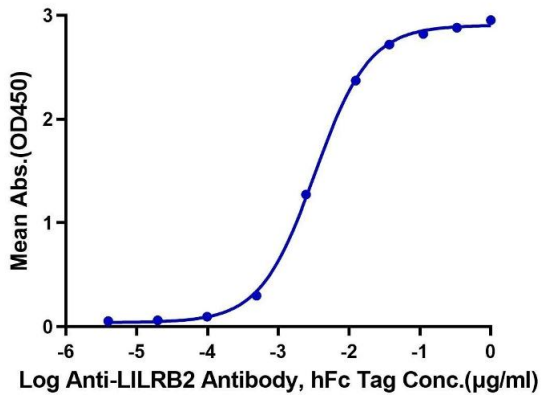
Restrictions:	For Research Use only
---------------	-----------------------

Handling

Format:	Lyophilized
Reconstitution:	Centrifuge the tube before opening. Reconstituting to a concentration more than 100 µg/mL is recommended. Dissolve the lyophilized protein in distilled water.
Buffer:	Lyophilized from 0.22µm filtered solution in PBS (pH 7.4). Normally 8 % trehalose is added as protectant before lyophilization.
Storage:	-20 °C,-80 °C
Storage Comment:	-20 to -80°C for 12 months as supplied from date of receipt., -80°C for 3-6 months after reconstitution., 2-8°C for 2-7 days after reconstitution., Recommend to aliquot the protein into smaller quantities for optimal storage. Please minimize freeze-thaw cycles.
Expiry Date:	12 months

Human LILRB2 Domain1&2, His Tag ELISA

0.05µg Human LILRB2 Domain1&2, His Tag Per Well

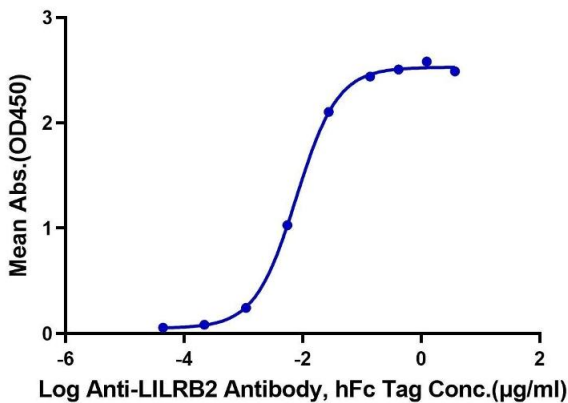


ELISA

Image 1. Immobilized Human LILRB2 Domain1&2, His Tag at 0.5 µg/mL (100 µL/well) on the plate. Dose response curve for Anti-LILRB2 Antibody, hFc Tag with the EC50 of 3.2 ng/mL determined by ELISA.

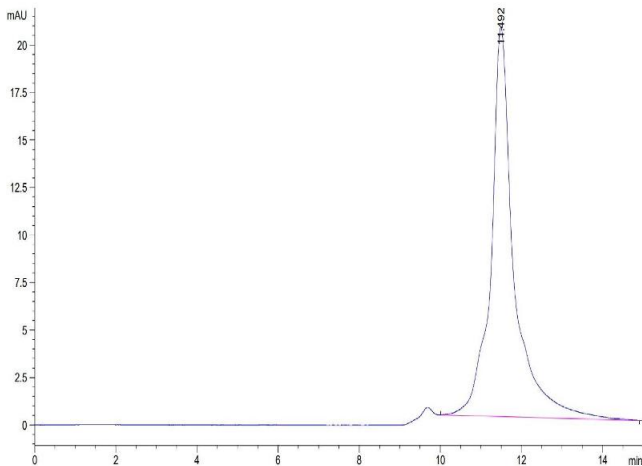
Human LILRB2 Domain1&2, His Tag ELISA

0.2µg Human LILRB2 Domain1&2, His Tag Per Well



ELISA

Image 2. Immobilized Human LILRB2 Domain1&2, His Tag at 2 µg/mL (100 µL/Well) on the plate. Dose response curve for Anti-LILRB2 Antibody, hFc Tag with the EC50 of 7.8 ng/mL determined by ELISA.



Size-exclusion chromatography-High Pressure Liquid Chromatography

Image 3. The purity of Human LILRB2 Domain 1&2 is greater than 95 % as determined by SEC-HPLC.

Please check the [product details page](#) for more images. Overall 6 images are available for ABIN7275165.