
Learning-Augmented Binary Search Trees

Honghao Lin^{*1} Tian Luo^{*1} David P. Woodruff^{*1}

Abstract

A treap is a classic randomized binary search tree data structure that is easy to implement and supports $O(\log n)$ expected time access. However, classic treaps do not take advantage of the input distribution or patterns in the input. Given recent advances in algorithms with predictions, we propose pairing treaps with machine advice to form a learning-augmented treap. We are the first to propose a learning-augmented data structure that supports binary search tree operations such as range-query and successor functionalities. With the assumption that we have access to advice from a frequency estimation oracle, we assign learned priorities to the nodes to better improve the treap’s structure. We theoretically analyze the learning-augmented treap’s performance under various input distributions and show that under those circumstances, our learning-augmented treap has stronger guarantees than classic treaps and other classic tree-based data structures. Further, we experimentally evaluate our learned treap on synthetic datasets and demonstrate a performance advantage over other search tree data structures. We also present experiments on real world datasets with known frequency estimation oracles and show improvements as well.

1. Introduction

Querying ordered elements is a fundamental problem in computer science. Classically, hash tables and various tree-based data structures such as Red-Black Trees, AVL Trees, and Treaps have been used to efficiently solve this problem. While hash tables are very efficient and extensively used in practice, trees are more memory-efficient and can

dynamically resize with greater convenience. Additionally, search trees can offer extra functionality over hash tables in the form of successor/predecessor, minimum/maximum, order statistics, and range query capabilities. In practice, self-balancing binary search trees are used in routing tables, database indexing (B-Trees), the Linux kernel (Red-Black Trees), and various implementations of collections, sets, and dictionaries in standard libraries.

Classic binary search tree data structures often support these functionalities in $O(\log n)$ time. However, most binary search tree implementations, such as Red-Black Trees and AVL Trees, do not leverage patterns in the data to improve performance; instead, they provide a worst-case of $O(\log n)$ time per access. Splay Trees are able to implicitly take advantage of the underlying input distribution without any information about the distribution as they are, up to a constant factor, statically optimal and conjectured to be dynamically optimal (Sleator & Tarjan, 1985). Unfortunately, each access is accompanied by a series of rotations that is proportional to the number of nodes visited during the access, which increases the access time by a possibly large constant factor. On the other hand, if the underlying distribution is known, then one can generate a statically optimal tree in $O(n^2)$ time (Knuth, 1971) or an approximately statically optimal tree in $O(n \log n)$ time (Mehlhorn, 1971); however, these methods do not allow for dynamic insertion and deletion operations.

A natural idea that arises is to use patterns in data to improve the efficiency of these data structures. In recent years, the field of learning-augmented algorithms has blossomed (see (Mitzenmacher & Vassilvitskii, 2020) for a survey). Given a predictor that can output useful properties of the dataset, we can then leverage these predictions to optimize the performance of the algorithm based on the predicted patterns. In this paper, we present a learning-augmented binary search tree that is the first to support efficient range queries and order statistics.

In summary, we present the following contributions:

- We introduce a learning-augmented Treap structure which exploits a rank prediction oracle to decrease the number of comparisons needed to find an element.
- We analyze our learning-augmented Treap and provide

^{*}Equal contribution ¹Computer Science Department, Carnegie Mellon University, Pittsburgh, PA, USA. Correspondence to: Honghao Lin <honghaol@andrew.cmu.edu>, Tian Luo <tianl1@andrew.cmu.edu>, David P. Woodruff <dwoodruf@andrew.cmu.edu>.

theoretical guarantees for various distributions. We further show that our learning-augmented Treap is robust under a reasonable amount of noise from the oracle and that it performs no worse than a random Treap when the oracle is inaccurate, for any input distribution \mathcal{D} , up to an additive constant.

- We experimentally evaluate the performance of our learning-augmented Treap over synthetic distributions and real world datasets. On synthetic distributions, we show improvements of over 25% compared to the best classical binary search trees. On real world datasets, we show that the performance is comparable to the best among popular classical binary search trees and show significant improvements over non-learned Treaps.

1.1. Motivation for Learning-Augmented Treaps

In a binary search tree, more frequently accessed items should appear closer to the root to reduce the average number of comparisons in order to retrieve the item. However, Red-Black Trees, AVL Trees, and non-learned Treaps do not take advantage of this property, while Splay Trees exploit this only to the extent that more recent items are placed near the root.

Given an oracle that predicts the ranks of elements, it is natural to build a tree in which the top-ranked items are near the root. These oracles are indeed realistic; for example, we can use frequency estimators to approximately rank the elements. Hashing-based approaches, such as Count-Min (Cormode & Muthukrishnan, 2005) and Count-Sketch (Cormode & Hadjieleftheriou, 2008), have been shown to be efficient and effective in this regard. Further, recent advances in the learning-augmented space have spurred the development of learning-augmented frequency estimators (Hsu et al., 2019). In our experiments, we use the trained machine learning oracle from Hsu et al. (2019) as our frequency estimator.

With the availability of such a predictor, the motivation of augmenting a classic binary search tree data structure with a learned oracle is clear. Red-Black Trees and AVL Trees are uniquely determined by the insertion order of the elements and while it is feasible to insert the elements in such an order such that the top-ranked items are near the root, it is not clear how to support insertions and deletions to maintain this property. On the other hand, the order of insertions matters less for a Splay Tree, especially over a long sequence of operations, as it is self-adjusting. Our attempts at producing a learning-augmented Splay Tree have been unfruitful; this was largely due to the high overhead associated with rotations and difficulties in determining whether to splay an element. Instead of a Splay Tree, statically optimal trees could also be built with a frequency estimation oracle; however, these trees are unable to support insertions or deletions after initialization.

Treaps are simpler to analyze and can naturally be adapted in the learning-augmented setting. Indeed, Treaps are uniquely determined by the priorities of each key (given that all priorities are unique) and elements with higher priority appear closer to the root of tree. In this paper, we suggest assigning learned priorities to the Treap instead of priorities being drawn from a distribution \mathcal{D} ; specifically, we assign the learned frequency as the priority. With this adjustment, we are able to efficiently support insertions and deletions, among other tree operations, while improving access time. We note that in the paper that introduced Treaps (Aragon & Seidel, 1989), a modification was suggested where every time an element was accessed, the new priority of the element was set to be the maximum of the old priority and a new draw from \mathcal{D} . We are the first to learn the priorities using a machine learning oracle.

1.2. Related Work

This paper follows the long line of research in the growing field of algorithms with predictions. Learning-augmented algorithms have been applied to a variety of online algorithms, such as the ski rental problem and job scheduling (Purohit et al., 2018). Further, caches (Lykouris & Vassilvitskii, 2020), Bloom filters (Mitzenmacher, 2019), index structures (Kraska et al., 2018), and Count-Min and Count-Sketch (Hsu et al., 2019) are among the many data structures that have had a learning-augmented counterpart suggested.

In particular, Kraska et al. (2018) suggests replacing B-Trees (or any other index structure) with trained models for querying databases. In their work, instead of traversing the B-Tree to access the position of a record, they use a neural net to directly point towards the record. Our work is different from theirs since it keeps the search tree and instead optimizes the structure of the tree for faster queries; through this, we are able to support common additional tree-based operations such as traversal, order statistics, merge/join, etc.

Our work uses the frequency estimation oracle trained in Hsu et al. (2019) on a search query dataset (AOL) and an IP traffic dataset. Since then, other papers have used these predictions as the basis of their learned structures (Jiang et al., 2020). Furthermore, Du et al. (2021) has shown an improved oracle for the IP dataset, which shows significant improvements in accuracy.

2. Preliminaries

We use $[n]$ to denote the set $\{1, \dots, n\}$; further, we identify the set of keys in our binary tree with $[n]$. For a sequence of m queries, we let $e_i \in [n]$ be the i^{th} most frequent item with frequency f_i , breaking ties randomly. In our analysis, we also assume that the input distribution is the same throughout the duration of the query sequence and that

the frequency observed in the sequence of m queries exactly reflects its true distribution, as in element e_i occurs with probability $p_i = \frac{f_i}{m}$. We will define the rank of element e_i to be i and the ranking ordering to be e_1, \dots, e_n .

Treaps: Treaps are binary search trees that also hold an additional field per node that stores the priority of that node. For node i , we denote the priority of the node to be w_i . At the end of any operation, in addition to the binary search tree order invariant, a Treap always satisfies the heap invariant, that is, if node x is an ancestor of node y , then $w_x \geq w_y$. Classically, the priorities of a Treap are drawn from a continuous distribution so as to not have any duplicate priorities.

Insertion in a Treap is simple. We insert the new node by attaching it as a leaf in the appropriate position (i.e., satisfying the order invariant) in the Treap. Then, we repeatedly rotate the new node and its parent until the heap invariant is satisfied. Deletion is achieved by rotating the node down until it is a leaf and detaching the node; we pick the child with the greater priority to perform the rotation.

We will refer to a Treap where priorities are assigned based on the rank or frequency of the element as a learned Treap, while a classic random Treap will be referred to as a random Treap.

Throughout the analysis, we make the assumption that the rank order of the keys is random, as in, e_1, \dots, e_n is a random permutation of $[n]$. Section 3.6 shows how to remove this assumption; however, we keep this assumption for ease of the analysis. Furthermore, we will also assume for convenience that the frequencies of the keys are unique, as in $f_i = f_j$ if and only if $i = j$. To remove this assumption, we can break ties randomly. If elements x and y have the same frequency and the tie is broken in favour of x , we will say that x has lower rank than y .

Zipfian Distribution: In our analysis, we analyze the performance of a Treap under the Zipfian distribution. Specifically, the Zipfian distribution with parameter α has frequencies $f_i = \frac{m}{i^\alpha H_{n,\alpha}}$ where $H_{n,\alpha} = \sum_{i=1}^n \frac{1}{i^\alpha}$ is the n^{th} generalized harmonic number of order α .

3. Learning Augmented Treaps

In the following sections, we assume access to a perfect oracle and analyze the theoretical performance of our learned Treaps versus random Treaps. In Section 3.4, we discuss the robustness and performance guarantees of our learned Treaps when we are given a noisy oracle. In Section 3.5, we explore performance guarantees of our oracle if given a less powerful oracle. Finally, in Section 3.6 we explore a modified version of the learned Treap that removes the assumption that the rank ordering is a random permutation.

3.1. Treap Operations

3.1.1. TREAP INITIALIZATION

Given a predictor that outputs the frequency rank of an element, we assign a priority equal to the frequency rank of the element and insert the element into the Treap. Similarly, if we had a frequency estimation oracle instead of a rank-estimation oracle, we can insert the element into the Treap with priority equal to the frequency estimate.

3.1.2. ACCESS

We present the following theorem that bounds the expected depth of e_i in a learned Treap.

Theorem 3.1. *The expected depth of e_i in a learned Treap is $2H_i - 1$, where H_i is the i -th Harmonic number.*

Proof. Consider the set of elements with higher priority, i.e., $S = \{e_k \mid k \leq i\}$. Notice that only elements in S can be ancestors of e_i and e_i cannot be an ancestor of any element in S . Since e_1, \dots, e_n is a random permutation of $[n]$, e_1, \dots, e_i is a random permutation of $\{e_1, \dots, e_i\}$.

Under these assumptions, the number of comparisons needed to access e_i is equivalent to the number of comparisons needed to correctly insert a random element $x \in [i]$ in a sorted array of elements $[i] \setminus \{x\}$ using binary search, where pivots are chosen randomly. Here, the pivots are analogous to the ancestors of e_i .

This motivates the following recurrence for computing the expected depth of e_i :

$$T(i) = \begin{cases} 1 & i = 1 \\ 1 + \frac{2}{i-1} \sum_{k=1}^{i-1} \left(\frac{k}{i} T(k)\right) & \text{otherwise} \end{cases}$$

which simplifies to

$$T(i) = \begin{cases} 1 & i = 1 \\ \frac{2}{i} + T(i-1) & \text{otherwise} \end{cases}$$

This recurrence evaluates to $T(i) = 2H_i - 1$. \square

Theorem 3.2. *The expected depth of e_i in a learned Treap is $O(\log i)$ with high probability.*

Proof. Again, we analyze the depth of element e_i by examining the number of comparisons needed to insert a random element $x \in [i]$ in a sorted array of $[i] \setminus x$ use random binary search. We employ a similar technique to the classic high probability analysis of QuickSort.

Suppose on iteration k , the size of the array being searched is X_k . With probability $\frac{1}{2}$, the randomized pivot is situated

in the range $[\frac{1}{4}X_k, \frac{3}{4}X_k]$. In this case, $X_{k+1} \leq \frac{3}{4}X_k$. Otherwise, if the pivot does not land in this range, we know that $X_{k+1} \leq X_k$ trivially. We get the following:

$$\mathbb{E}[X_k] \leq \frac{1}{2}X_{k-1} + \frac{3}{8}X_{k-1} = \frac{7}{8}X_{k-1}$$

Since $X_0 \leq i$, we have

$$\mathbb{E}[X_k] \leq \left(\frac{7}{8}\right)^k X_0 \leq \left(\frac{7}{8}\right)^k i$$

The probability that the randomized binary search uses more than k iterations is exactly $\Pr\{X_k \geq 1\}$. Using Markov's Inequality and setting $k = c \log_{\frac{8}{7}} i$ for some constant c gives

$$\Pr\{X_k \geq 1\} \leq \mathbb{E}[X_k] \leq \frac{1}{i^{c-1}}$$

Therefore, setting $c \geq 2$ implies that the expected depth of e_i is $O(\log i)$ with high probability. \square

Theorem 3.3. *With constant probability, for every i , e_i has depth $O(\log i)$. In other words, the entire tree is well-balanced.*

Proof. Again, let X_i be the depth of element e_i . Notice that X_1 and X_2 are 1 and 2, respectively, with probability 1. From [Theorem 3.1](#), for $i \geq 3$, $X_i \leq O(\log i)$ with probability at most $\frac{1}{i^{c-1}}$ for some constant c . Applying a union bound over elements X_i for $i \geq 3$ gives

$$\Pr\left\{\bigcup_{i=3}^n X_i \leq O(\log i)\right\} \leq \sum_{i=3}^n \frac{1}{i^{c-1}}$$

For $c = 3$, $\sum_{i=3}^n \frac{1}{i^{c-1}} \leq \frac{\pi^2}{6} - 1.25 \approx 0.39$. \square

3.1.3. INSERTION/DELETION AND PRIORITY UPDATES

Corollary 3.4. *The expected time of an insertion, deletion or priority update is $O(\log n)$.*

Proof. Suppose during the insertion process of a node x , we attach x to node y as a leaf. Then by [Theorem 3.1](#), the depth of y is $O(\log n)$ in expectation. Similarly, suppose during the deletion process of node x , we detach node x when it is a child of node y . By [Theorem 3.1](#), the time it takes is $O(\log n)$.

Similarly, a priority update takes at most $O(\log n)$ time. \square

3.1.4. OTHER OPERATIONS

Our learned Treap could also be optimized for other tree-based operations. Under these modifications, the following

operations could be supported by a learned Treap with time similar to that of an access on a learned Treap.

Range Queries: Consider the simple operation of counting the number of elements between keys x and y . This operation is commonly implemented by augmenting every node with a field that stores the size of the subtree rooted at the node. Counting the number of elements in the ranges reduces to traversing from the root to x and from the root to y , which is similar to the process of accessing x and y . Thus, the predictor can learn the frequency distribution of the boundaries of the range query to optimize our Treap. Other such operations may include the standard RangeSum operation, which outputs the sum of the values stored in each key of the tree.

Successor/Predecessor: On a query to the successor of key x , the output would be the smallest key greater than x . Among the many ways to implement this functionality, a simple way is to keep a pointer that points to the successor/predecessor. When finding the successor of key x , we simply access x in the Treap and use the stored pointer to access the successor. Our predictor can learn the frequency distribution of successor queries to x and set the priority of x accordingly in the learned Treap.

When supporting this operation, insertion and deletion become more complicated. When inserting element x , we must change the pointers of both the successor and predecessor of x accordingly; however, this requires at most a constant number of pointer changes.

3.2. General Distributions

In this section, we analyze the expected cost per access of a learned Treap and a random Treap for an arbitrary frequency distribution \mathcal{D} .

Lemma 3.5. *The expected cost of a single access on a learned Treap is $\sum_{i=1}^n p_i(2H_i - 1)$.*

Proof. This follows immediately from [Theorem 3.1](#). \square

Since the expected cost of a single access is known to be at most $O(\log n)$ ([Aragon & Seidel, 1989](#)), we provide a lower bound on this expectation.

Theorem 3.6. *The expected cost of a single access on a random Treap is at least $2H_{n+1} - 4$ for any frequency distribution.*

Proof. The expected depth of key i is well-known to be $H_i + H_{n-i+1} - 2$ ([Aragon & Seidel, 1989](#)). Let X be the depth of an access and let X_{ij} be the depth of key i if it is

the j^{th} -ranked item, and 0 otherwise.

$$\begin{aligned}
 \mathbb{E}[X] &= \sum_{i=1}^n \frac{1}{n} \sum_{j=1}^n \mathbb{E}[X_{ij}] \\
 &= \sum_{i=1}^n \frac{1}{n} \sum_{j=1}^n p_j (H_i + H_{n-i+1} - 2) \\
 &= \sum_{i=1}^n \frac{1}{n} (H_i + H_{n-i+1} - 2) \\
 &= \frac{2}{n} \sum_{i=1}^n H_i - 1 \\
 &= \frac{2}{n} ((n+1)H_{n+1} - 2n) \\
 &> 2H_{n+1} - 4 \quad \square
 \end{aligned}$$

3.3. Zipfian Distributions

In this section, we analyze the expected cost of an access of a learned Treap where $p_i \propto \frac{1}{i^\alpha}$ for a parameter α .

Theorem 3.7. *The expected cost of a single access on a learned Treap is $\sum_{i=1}^n \frac{1}{i^\alpha H_{n,\alpha}} (2H_i - 1)$.*

Proof. From Lemma 3.5, it is immediate that the expected cost is $\sum_{i=1}^n \frac{1}{i^\alpha H_{n,\alpha}} (2H_i - 1)$. \square

Lemma 3.8. *The expected cost of an access for $\alpha = 1$ is at most H_n .*

Proof. For $\alpha = 1$, the expected cost is $\sum_{i=1}^n \frac{1}{iH_n} (2H_i - 1)$ by Theorem 3.7.

Consider the sum $C = \sum_{i=1}^n \frac{1}{i} (H_i)$. Observe by expanding this summation that it evaluates to $\frac{1}{2}((H_n)^2 + H_{n,2})$. The expected cost can then be expressed as $\frac{2C}{H_n} - 1 = H_n + \frac{H_{n,2}}{2H_n} - 1$. This approaches $H_n - 1$ as n increases. \square

Corollary 3.9. *The expected cost of an access for a learned Treap on a Zipfian distribution with parameter $\alpha = 1$ is approximately a factor 2 less than that of an access on a random Treap.*

Lemma 3.10. *The expected cost of an access for $\alpha > 1$ is constant.*

Proof. For $\alpha > 1$, the expected cost is $\sum_{i=1}^n \frac{1}{i^\alpha H_{n,\alpha}} (2H_i - 1)$ by Theorem 3.7.

Consider the series $a_i = \frac{H_i}{i^\varepsilon}$ and $b_i = \frac{1}{i^{\alpha-\varepsilon}}$ for some $\varepsilon > 0$. Observe the following properties:

- Since $H_n \leq \ln(n) + 1$, $\lim_{n \rightarrow \infty} a_n = 0$. Further, $\{a_n\}$ is monotonically decreasing for large n .

- Since $\alpha > 1$, there exists ε such that $\alpha - \varepsilon > 1$ and thus, $\sum_{i=1}^n b_i \leq c$ for some constant c .

Recall Dirichlet's test: if $\{a_n\}$ is a monotonically decreasing sequence whose limit approaches 0 and $\{b_n\}$ is a sequence such that $\sum_{i=1}^{\infty} b_i$ is bounded by a constant, then $\sum_{i=1}^{\infty} a_i b_i$ converges as well.

By these two observations and using Dirichlet's test, $\sum_{i=1}^n a_n b_n = \sum_{i=1}^n \frac{H_n}{i^\alpha}$ converges to a constant. The expected cost here is $\frac{2}{H_{n,\alpha}} (\sum_{i=1}^n a_n b_n) - 1$. Therefore, the expected cost is bounded from above by a constant. \square

Theorem 3.11. *The learned Treap is statically optimal in expectation for $\alpha \geq 1$.*

Proof. First, consider $\alpha = 1$. The Shannon entropy, H , of this distribution is an asymptotic lower bound for a statically optimal tree, namely, Mehlhorn shows that for any binary tree, the weighted path length must be at least $\frac{H}{3}$ (Mehlhorn, 1971). The Shannon entropy for the Zipfian distribution with $\alpha = 1$ is

$$\begin{aligned}
 \sum_{i=0}^n -p_i \log(p_i) &= \sum_{i=0}^n \frac{1}{iH_n} \log(iH_n) \\
 &= \sum_{i=0}^n \frac{1}{iH_n} (\log(i) + \log(H_n)) \geq \sum_{i=0}^n \frac{1}{iH_n} \log(i)
 \end{aligned}$$

Clearly, this is within a constant factor of the expected cost of our learned Treap. Since the expected cost for the learned Treap is within a constant factor of the Shannon entropy, we are statically optimal up to a constant factor.

For $\alpha > 1$, the expected cost is constant; therefore, it is immediate that we are at most a constant factor more than the statically optimal binary search tree. \square

3.4. Noisy Oracles and Robustness to Errors

In this section, we will prove that given an accurate rank prediction oracle subject to a reasonable amount of noise and error, our learned Treap's performance matches that of a perfect rank prediction oracle up to an additive constant per access.

Given element i , let r_i be the real rank of i and let \hat{r}_i be the predicted rank of i . We will call an oracle noisy if $\hat{r}_i \leq \varepsilon r + \delta$ for some constants $\varepsilon, \delta \geq 1$.

Theorem 3.12. *Using predictions from a noisy oracle, the learned Treap's performance matches that of a learned Treap with a perfect oracle up to an additive constant.*

Proof. The expected cost of a single access on the learned Treap with a noisy oracle is at most $\sum_{i=1}^n p_i (2H_{\varepsilon i + \delta} - 1)$.

The difference between the expected cost of a learned Treap with a noisy oracle and a learned Treap with a perfect oracle is $\sum_{i=1}^n 2p_i(H_{\varepsilon i+\delta} - H_i)$.

Using that $\ln(n) \leq H_n \leq \ln(n) + 1$ for the n^{th} Harmonic number H_n , the difference is at most $\sum_{i=1}^n 2p_i(1 + \ln(\varepsilon + \frac{\delta}{i})) \leq \sum_{i=1}^n 2p_i(1 + \ln(\varepsilon + \delta)) = 2(1 + \ln(\varepsilon + \delta)) \leq c$, for some constant c . Therefore, under a noisy oracle, the learned Treap is at most an additive constant worse than a learned Treap with a perfect oracle. \square

We remark that for frequency estimation oracles, it might be natural to consider an error bound of $\frac{1}{\Delta}f_i \leq \hat{f}_i \leq \Delta f_i$ instead; however, if the underlying distribution is Zipfian, a frequency estimation error bound of $\frac{1}{\Delta}f_i \leq \hat{f}_i \leq \Delta f_i$ is equivalent to a rank estimation error bound of $\hat{r}_i \in r_i \pm \Delta^2$.

We will call an oracle inaccurate if there exist no constants $\varepsilon, \delta \geq 1$ such that $\hat{r}_i \leq \varepsilon r_i + \delta$. Further, we will define the notion of an adversarial oracle as an oracle that outputs a rank ordering that is adversarial; more specifically, given a distribution \mathcal{D} with a random rank ordering, a non-adversarial oracle would output a random rank ordering that is not necessarily the same as the rank ordering of \mathcal{D} .

Theorem 3.13. *A learned Treap based on an inaccurate but non-adversarial oracle has expected performance no worse than that of a random Treap, up to a small additive constant.*

Proof. Since the oracle is non-adversarial, the expected depth of any element is still bounded by $2H_n - 1$ by [Theorem 3.1](#). Therefore, the expected cost is at most $\sum_{i=1}^n p_i(2H_n - 1) = 2H_n - 1$. \square

3.5. Oracles with Limited Capabilities

In certain circumstances, it may be impossible or inconvenient to obtain an oracle that predicts the full rank ordering of the elements. Instead, it may be easier to obtain an oracle that predicts the top k elements only.

In this case, we will assign the top k elements random positive real-valued priorities and the remaining elements will be assigned random negative real-valued priorities. Hence, the top k elements are ancestors of the remaining elements. Again, here, we will assume that the underlying rank ordering is a random permutation of $[n]$. Further, suppose that the top k items account for p percent of the queries.

Theorem 3.14. *With an oracle that predicts only the top k elements, the expected depth of an access is at most $2(pH_k + (1 - p)H_n) - 1$.*

Proof. For the top k elements, the expected depth is at most $2H_k - 1$ and for the rest of the elements, the expected depth

is at most $2H_n - 1$. Therefore, the expected depth of an access is at most $2(pH_k + (1 - p)H_n) - 1$. \square

For small k and significant p , this results in a large constant factor reduction in expected access depth. Similarly, if we were given an oracle that can only accurately predict the frequencies of the top k items, we can assign priorities of the top k items to the frequency and assign random negative real-valued priorities to the remaining $n - k$ items.

3.6. Removing Assumption of Random Rank Ordering

In real world datasets, it might not be the case that the rank ordering is a random permutation. For example, in search queries, certain queries are lexicographically close to misspelled versions of the query; however, misspelled versions of the query have a significantly reduced frequency compared to the correctly spelled query. Furthermore, it may be the case that the oracle is adversarial. In this case, we would want to remove the assumption that the rank ordering is a random permutation.

One natural idea is to map the identities of the elements to a random real number. For key i , we will use s_i to denote this random real. The idea is to use a random Treap (or any other self-balancing binary search tree) and a learned Treap together. The random Treap will use the actual identity of the element as the key and the learned Treap will use the random real as the key. For each node in the learned Treap, we keep a pointer to the corresponding node in the random Treap. It immediately follows that the rank ordering on the keys of the learned Treap is equivalent to a random permutation. Furthermore, we keep a map that maps the identity of the element to its corresponding random real. We show an example of this modified learned treap in [Figure 1](#).

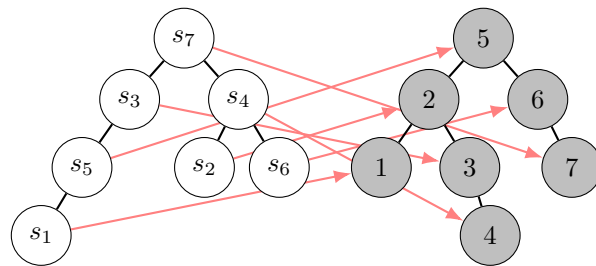


Figure 1. An example of the learned Treap modification. White nodes form the learned Treap and grey nodes form the random Treap. The red arrows are the pointers from nodes in the learned Treap to the corresponding node in the random Treap. One possible assignment of $[s_1, \dots, s_7]$ for this Treap could be $[1, 5, 3, 6, 2, 7, 4]$.

We describe each tree operation below:

Access: For an access operation to element i , we query s_i

in the learned Treap and use the pointer to access element i in the random Treap.

Insertion: To insert element i , we generate s_i and store s_i in our map. Then we insert i into the random Treap with a random priority and insert s_i into the learned Treap with the learned priority. We set the pointer in the node containing s_i to point to i .

Deletions: To delete element i , we delete i from the random Treap, s_i from the learned Treap, and remove i and s_i from the map.

Successor/Predecessor: To support successor and predecessor functionalities, we apply the same technique as described in Section 3.1.4 on the random Treap.

Unfortunately, under this modification, there is no easy method of optimizing for range queries; however we note that this operation still takes at most $O(\log n)$ time in expectation because this is the expected sum of depths of the two nodes that we access. The main issue arises from the fact that range queries require access to the path from the root to the queried node on the random Treap; however, to remove the random rank ordering, we intentionally circumvent this path by traversing the learned Treap instead. For all accesses and successor/predecessor operations, we increase the cost of an operation by at most an additive constant related to accessing the map and a constant amount of pointer accesses. For insertions and deletions, we maintain the expected $O(\log n)$ bound since every node has expected depth at most $O(\log n)$.

In practice, there might be a desire to avoid implementing a map; instead, using a hash function to implicitly store the map may be a more attractive alternative. We will show that using a 4-wise independent hash function with range $(0, 1)$ would suffice. We choose to implement the hash function in $\text{poly}(n)$ precision so that with high probability, there are no collisions and such a hash function requires $O(\log n)$ bits to store and only increases the cost of operations by at most an additive constant.

Theorem 3.15. *Given $s_i = h(e_i)$ where h is drawn from a 4-wise universal hash family with range $(0, 1)$, the expected depth of s_i is $O(\log i)$.*

To achieve this, the following observation is crucial.

Fact 3.16. *Suppose that s_j is an ancestor of s_i where $j < i$. Then in the ordering of $\{s_i | x \in \{1, \dots, j, i\}\}$, s_i and s_j are adjacent.*

Proof of Theorem 3.15. Since the priorities of each key do not change, only elements in $\{e_1, \dots, e_{i-1}\}$ can potentially be ancestors of e_i . We proceed with an analysis similar to Knudsen and Stöckel’s (2015) analysis of quicksort under limited independence.

From Lemma 4 of (Knudsen & Stöckel, 2015), we have the following lemma: given hash function $h : X \rightarrow (0, 1)$ drawn from a 4-universal hash family and disjoint sets $A, B \subseteq X$ with $|A| \leq |B|$, then

$$\mathbb{E}[|\{a \in A | h(a) \leq \min_{b \in B} h(b)\}|] = O(1).$$

Similarly, $\mathbb{E}[|\{a \in A | h(a) \geq \max_{b \in B} h(b)\}|] = O(1)$.

Consider the set $S_j = \{s_j | 1 \leq j \leq i - 1\}$. From Fact 3.16 we get that if s_j is an ancestor of s_i for some $j < i$, then for all $j' < j$, $s_{j'} < \min\{s_i, s_j\}$ or $s_{j'} > \max\{s_i, s_j\}$.

For $k = 1, 2, \dots, \log i$, define

$$B_k = [2^{k-1}] \text{ and } A_k = ([2^k] \cap [i]) / [2^{k-1}].$$

Suppose that s_j is an ancestor of s_i for some $j \in A_k$. Without loss of generality, we assume that $s_j < s_i$. Then we have that for each $j' \in B_k$, $s_{j'} < s_j$ or $s_{j'} > s_i$. Consider the hash function $H : X \rightarrow (-(1 - s_i), s_i)$ such that $H(x) = h(x)$ if $h(x) < s_i$ and $H(x) = h(x) - 1$ if $h(x) > s_i$. Notice that H is also a 4-wise independent hash function. This implies that $H(j) > \max_{b \in B_k} H(b)$. From the lemma above, there are an expected $O(1)$ such elements in A_k and since there are only $O(\log i)$ values of k for which A_k is non-empty, it follows immediately by linearity of expectation that the expected number of ancestors of s_i is $O(\log i)$ and thus, the expected depth of e_i is $O(\log i)$. \square

4. Experiments

In this section, we present experimental results that compare the performance of our learned Treap to classical self-balancing binary search tree data structures. Specifically, we examined Red-Black Trees, AVL Trees, Splay Trees, B-Trees of order 3, and random Treaps. For binary search trees sensitive to insertion order, we insert all keys in a random order. For these experiments, we only consider query operations and report the total number of comparisons made by each data structure. We note that although the number of comparisons is not a precise measurement of actual runtime, with the exception of Splay Trees, traversing the tree is extremely similar across all data structures, and for all data structures tested except B-Trees, the number of comparisons is exactly the access depth. For Splay Trees, we can expect a constant factor more in actual runtime due to the rotations involved.

4.1. Synthetic Datasets

We consider synthetic datasets where elements appear according to a Zipfian distribution with parameter α . As with section 3, we assume that the rank order of the elements is a random permutation. For each experiment, we consider a sequence of length 10^5 .

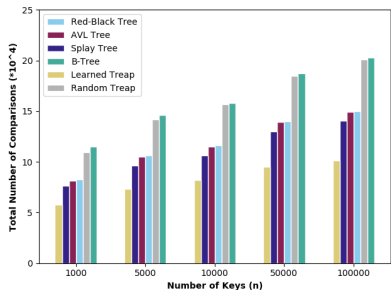


Figure 2. Total number of comparisons of classical binary search tree data structures and the learned Treap on the Zipfian Distribution with parameter $\alpha = 1$

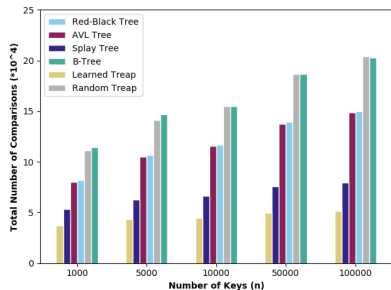


Figure 3. Total number of comparisons of classical binary search tree data structures and the learned Treap on the Zipfian Distribution with parameter $\alpha = 1.25$.

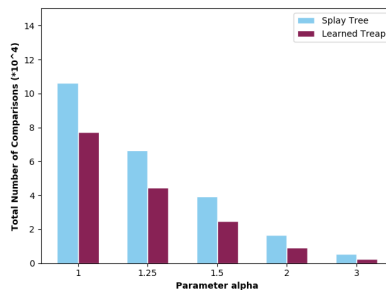


Figure 4. Total number of comparisons of Splay Tree and learned Treaps for varying Zipfian parameter α .

We report experimental results where we vary n , the number of keys, for $\alpha = 1$ in Figure 2 and for $\alpha = 1.25$ in Figure 3.

Notice that for both $\alpha = 1$ and $\alpha = 1.25$, the learned Treap performs approximately 25% better than Splay Trees and a bit over 30% better than AVL and Red-Black Trees in terms of the number of comparisons. For $\alpha = 1$, the factor-2 savings shown in Corollary 3.9 is exhibited and for $\alpha = 1.25$, we can see that the cost of an access is constant, as shown in Lemma 3.10.

In Figure 4, we show the effects of varying α ; in this set of experiments, we fix the number of keys to be 10^4 and only show results for the statically optimal trees, as in Splay Trees and learned Treaps. The learned Treap performs between approximately 27% – 51% better than the Splay Tree. The greatest improvement was at $\alpha = 3$ and the least improvement was observed when $\alpha = 1$.

4.2. Real World Datasets

In this section, we used machine learning models trained by Hsu et al. (2019) as our frequency estimation oracle. We present 4 versions of our learned Treap. We consider the performance of our learned Treap with the trained frequency estimation oracle and with a perfect oracle; for both of these instances, we also test the performance if we remapped the keys to a random permutation (i.e., similar to the idea of Section 3.6). We call the remapped versions of the learned Treap “shuffled”. To make the data more presentable, among classical binary search tree data structures, we only show the results of Red-Black Trees and Treaps; we remark that the relative performance of all classical binary search tree data structures in these datasets was similar to that in the synthetic datasets.

4.2.1. INTERNET TRAFFIC DATA

Various forms of self-balancing binary search trees and skip lists have been suggested to be used in routing tables (Sklower, 1991). In this experiment, we measure the perfor-

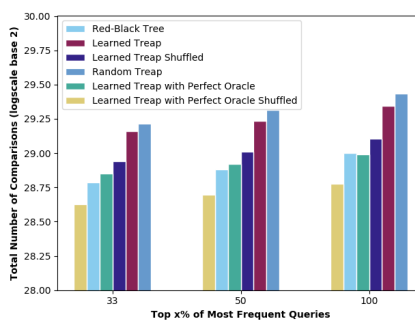


Figure 5. Total number of comparisons of Red-Black Trees, random Treaps, and learned Treaps on the 20th test minute

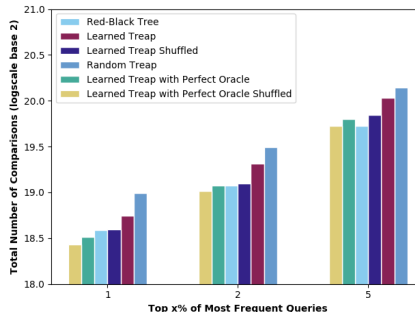


Figure 6. Total number of comparisons of Red-Black Trees, random Treaps, and learned Treaps on the 50th day.

mance of the binary search trees if we had to query every packet in the internet traffic logs.

Data: The internet traffic data was collected by CAIDA using a commercial backbone link (Tier 1 ISP) (CAIDA, 2016). Following Hsu et al. (2019), we used the internet traffic recorded from Chicago outgoing to Seattle recorded on 2016-01-21 13:00-14:00 UTC. Each minute recorded approximately 30 million and 1 million unique flows.

Model: We used the prediction made by Hsu et al. (2019). In their paper, an RNN was used to encode the source and destination IP addresses, ports, and protocol type, and a separate RNN was used to predict the number of packets

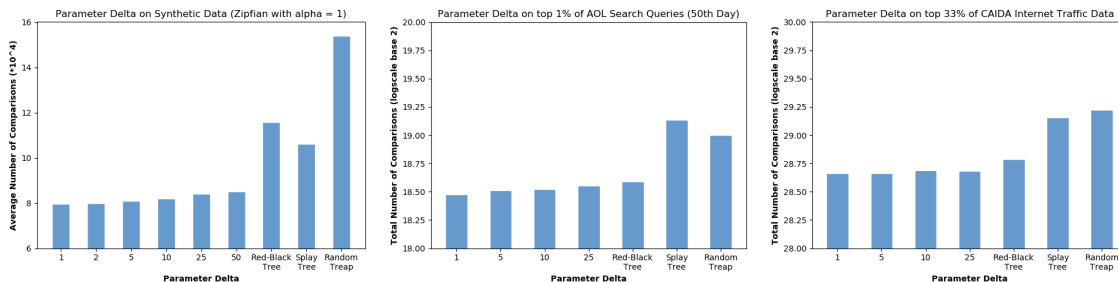


Figure 7. Performance of learned Treap under oracles with different errors

from the traffic flow based on the encoding. The first 7 minutes of the dataset was used as training sets with the next 2 minutes used as the validation sets. The rest of the dataset was used for testing. See Hsu et al. (2019) for details.

Results: In Figure 5, we plot the performances of the various data structures. We consider three variants of the dataset: a subset with the top 33% of the most frequent queries, a subset of the top 50% of the most frequent queries, and the full dataset. We show the results on the 20th test minute (2016-01-21 13:29 UTC).

In all cases, the shuffled versions of the learned Treap perform significantly better than that of the non-shuffled versions, and the learned Treaps perform better than random Treaps. We note that using the oracle from Hsu et al. (2019), we are unable to beat Red-Black Trees; however, the shuffled learned Treap with the learned oracle is comparable and with a better oracle, it could be possible to outperform a Red-Black Tree.

4.2.2. SEARCH QUERY DATA

Data: This dataset contains approximately 21 million queries on AOL collected over 90 days in 2006. The distribution follows Zipf’s Law (see Hsu et al. (2019)).

Model: Again, we use the predictions from Hsu et al. (2019). They use an RNN with LSTM cells to encode the queries character by character. The encoding is then fed into a fully connected layer to predict the frequency of each query. The first 5 days were used for training while the 6th day was used as the validation set.

Results: As with the Internet traffic dataset, we show the performance of the learned Treaps, a Red-Black Tree, and a random Treap in Figure 6. For this dataset, we consider the top 1%, 2%, and 5% of the most frequent queries as our set of keys. We show the results for the 50th day.

Similar to the internet traffic dataset, the shuffled version of the learned Treaps performed better and all learned Treaps performed better than the random Treap. For this dataset, the shuffled learned Treap with the frequency estimator

from Hsu et al. (2019) performed well and is comparable to the performance of a Red-Black Tree. Furthermore, unlike the internet traffic dataset, the performance of the learned Treaps with the machine learning model was close to that of the learned Treap with a perfect oracle.

4.3. Performance under Oracles with Different Errors

In this section, we study the performance of the learned Treap under oracles with certain errors on both synthetic and real-world data. In Figure 7 we show experimental results on synthetic and real-world data that show a graceful degradation as error grows. Here the prediction, \hat{f}_i , of the frequency satisfies $\hat{f}_i \leq \Delta f_i$. We note that if the underlying distribution is Zipfian, then the error bounds for the rank-estimation oracle are stronger than the bounds for a frequency estimation oracle; if a given frequency estimation oracle has the error bound of $\frac{1}{\Delta} f_i \leq \hat{f}_i \leq \Delta f_i$, then under a Zipfian distribution with $\alpha \geq 1$, then $\hat{r}_i \in r_i \pm \Delta^2$.

5. Conclusion

We introduced the concept of learning-augmented algorithms into the class of binary search tree data structures that support additional operations beyond B-trees. The learned Treap is able to support various useful tree-based operations, such as range-queries, successor/predecessor, and order statistic queries and can be optimized for such operations. We proved that the learned Treap is robust under rank-estimation oracles with reasonable error and under modifications, is no worse than a random Treap regardless of the accuracy of the oracle and the underlying input distribution. Further, we presented experimental evidence that suggests a learned Treap may be useful in practice. In the future, it may be interesting to explore whether advanced tree data structures, such as van Emde Boas Trees or Biased Skip Lists, can also benefit from machine learning techniques.

Acknowledgements.

Honghao Lin and David Woodruff would like to thank for partial support from the National Science Foundation (NSF) under Grant No. CCF-1815840.

References

- Aragon, C. R. and Seidel, R. G. Randomized search trees. In *Proceedings of the 30th Annual Symposium on Foundations of Computer Science, SFCS '89*, pp. 540–545, USA, 1989. IEEE Computer Society. ISBN 0818619821. doi: 10.1109/SFCS.1989.63531. URL <https://doi.org/10.1109/SFCS.1989.63531>.
- CAIDA. The caida ucsd anonymized internet traces - 2016, 2016. URL https://www.caida.org/catalog/datasets/passive_dataset.
- Cormode, G. and Hadjieleftheriou, M. Finding frequent items in data streams. *Proc. VLDB Endow.*, 1:1530–1541, 2008.
- Cormode, G. and Muthukrishnan, S. An improved data stream summary: the count-min sketch and its applications. *Journal of Algorithms*, 55(1):58–75, 2005. ISSN 0196-6774. doi: <https://doi.org/10.1016/j.jalgor.2003.12.001>. URL <https://www.sciencedirect.com/science/article/pii/S0196677403001913>.
- Du, E., Wang, F., and Mitzenmacher, M. Putting the “learning” into learning-augmented algorithms for frequency estimation. In Meila, M. and Zhang, T. (eds.), *Proceedings of the 38th International Conference on Machine Learning*, volume 139 of *Proceedings of Machine Learning Research*, pp. 2860–2869. PMLR, 18–24 Jul 2021. URL <https://proceedings.mlr.press/v139/du21d.html>.
- Hsu, C.-Y., Indyk, P., Katabi, D., and Vakilian, A. Learning-based frequency estimation algorithms. In *International Conference on Learning Representations*, 2019.
- Jiang, T., Li, Y., Lin, H., Ruan, Y., and Woodruff, D. P. Learning-augmented data stream algorithms. In *International Conference on Learning Representations*, 2020. URL <https://openreview.net/forum?id=HyxJ1xBYDH>.
- Knudsen, M. B. T. and Stöckel, M. Quicksort, largest bucket, and min-wise hashing with limited independence. In Bansal, N. and Finocchi, I. (eds.), *Algorithms - ESA 2015 - 23rd Annual European Symposium, Patras, Greece, September 14-16, 2015, Proceedings*, volume 9294 of *Lecture Notes in Computer Science*, pp. 828–839. Springer, 2015. doi: 10.1007/978-3-662-48350-3_69. URL https://doi.org/10.1007/978-3-662-48350-3_69.
- Knuth, D. E. Optimum binary search trees. *Acta Inf.*, 1(1):14–25, mar 1971. ISSN 0001-5903. doi: 10.1007/BF00264289. URL <https://doi.org/10.1007/BF00264289>.
- Kraska, T., Beutel, A., Chi, E. H., Dean, J., and Polyzotis, N. The case for learned index structures. In *Proceedings of the 2018 International Conference on Management of Data, SIGMOD '18*, pp. 489–504, New York, NY, USA, 2018. Association for Computing Machinery. ISBN 9781450347037. doi: 10.1145/3183713.3196909. URL <https://doi.org/10.1145/3183713.3196909>.
- Lykouris, T. and Vassilvitskii, S. Competitive caching with machine learned advice, 2020.
- Mehlhorn, K. Nearly optimal binary search trees. *Acta Informatica*, v.5, 287-295 (1975), 5, 01 1971. doi: 10.1007/BF00264563.
- Mitzenmacher, M. A model for learned bloom filters, and optimizing by sandwiching. *arXiv preprint arXiv:1901.00902*, 2019.
- Mitzenmacher, M. and Vassilvitskii, S. Algorithms with predictions. *arXiv preprint arXiv:2006.09123*, 2020.
- Purohit, M., Svitkina, Z., and Kumar, R. Improving online algorithms via ml predictions. In Bengio, S., Wallach, H., Larochelle, H., Grauman, K., Cesa-Bianchi, N., and Garnett, R. (eds.), *Advances in Neural Information Processing Systems*, volume 31. Curran Associates, Inc., 2018. URL <https://proceedings.neurips.cc/paper/2018/file/73a427badebe0e32caa2e1fc7530b7f3-Paper.pdf>.
- Sklower, K. A tree-based packet routing table for berkeley unix. In *USENIX Winter*, 1991.
- Sleator, D. D. and Tarjan, R. E. Self-adjusting binary search trees. *J. ACM*, 32(3):652–686, jul 1985. ISSN 0004-5411. doi: 10.1145/3828.3835. URL <https://doi.org/10.1145/3828.3835>.