



Your business success starts
with **better business partners.**

Penn State Executive & Professional Programs

Schedule

Penn State Executive & Professional Programs partners with leaders around the globe to develop skills proven to improve performance. Designed and led by Penn State faculty, our programs teach strategies that empower you to confidently deliver results.

Let's go into business, together.





Penn State Executive & Professional Programs are delivered in a live remote format. Our small-group sizes, breakout discussions, hands-on activities, and Q&A sessions encourage active engagement with your peers and instructors.

Leadership and Strategy

Complete three programs to earn a professional certificate in Strategy and Organizational Performance.

Communication Strategy for Leaders

December 11-13, 2024
\$2,100; Discount Rate: \$1,890

Learn a methodology for framing and communicating strategic vision across the organization with particular focus on leading across generations.

Implementing Strategy for Success

Dates coming! Contact us to be notified.
\$3,100; Discount Rate: \$2,790

Develop an integrated approach to strategy implementation and change management.

Leading with Analytics

November 18-20, 2024
\$2,100; Discount Rate: \$1,890

Leverage data by asking the right questions; capturing, analyzing and applying metrics; and making strategic decisions supported by data.

Leading for Results: Strategic Financial Management

October 9, 11, 16, & 18, 2024
\$3,100; Discount Rate: \$2,790

Connect business decisions with their financial consequences and view finance as an operational element of a successful organization.

Solving the Execution Challenge: Bridging Strategy and Action

September 10-12, 2024

Registration Deadline: Sep 2, 2024

\$2,325; Discount Rate: \$2,093

Understand and link the components of your organization's business architecture. Effectively connect business strategy with project portfolios. This program can be used towards a Professional Certificate in Strategy and Organizational Performance with two other "Leadership & Strategy" programs in the portfolio.

Strategic Leadership

September 23-26, 2024
\$3,100; Discount Rate: \$2,790

Align your organization's strategies, leadership, and culture; assess opportunities among competition; and develop future-focused strategies.

[View programs](#)

Architecting Strategy Execution

Complete three programs to earn a professional certificate in Architecting Strategy Execution.

Strategic Leadership

September 23-26, 2024

\$3,100; Discount Rate: \$2,790

Align your organization's strategies, leadership, and culture; assess opportunities among competition; and develop future-focused strategies.

Solving the Execution Challenge: Applying the Tools and Techniques

December 3-5, 2024

\$2,325; Discount Rate: \$2,093

Leverage business models for robust decision-making across strategy execution. Formulate practical next steps to enhance strategy execution.

Solving the Execution Challenge: Bridging Strategy and Action

September 10-12, 2024

Registration Deadline: Sep 2, 2024

\$2,325; Discount Rate: \$2,093

Understand and link the components of your organization's business architecture. Effectively connect business strategy with project portfolios. This program can be used towards a Professional Certificate in Strategy and Organizational Performance with two other "Leadership & Strategy" programs in the portfolio.

[View programs](#) 

Supply Chain Management

Complete three programs to earn a professional certificate in

Supply Chain Leadership **L**, Supply Chain Management **M**, or Supply Chain Operations **O**

Achieving Supply Chain Transformation **L** **M**

September 9-12, 2024
\$2,400; Discount Rate: \$2,160

Acquire models and tools for adaptability and leadership skills for creating a high-performing supply chain.

Aligning Supply Chain Organizations **L** **M**

November 12-14, 2024
\$1,600; Discount Rate: \$1,440

Learn to coordinate initiatives so that your enterprise functions seamlessly in service of your customers.

Building a Sustainable Supply Chain **L**

December 3-6, 2024
\$2,400; Discount Rate: \$2,160

Enhance supply chain sustainability to better manage financial, social, and environmental risks and opportunities.

Developing Strategic Supply Chain Leaders **L**

October 28-31, 2024
\$2,400; Discount Rate: \$2,160

Develop supply chain systems to align with organizational strategy and create competitive advantage.

Essentials of Supply Chain Management **M**

September 23-26, 2024
\$2,400; Discount Rate: \$2,160

Learn the critical concepts required to lead an integrated supply chain operation.

Forecasting and Inventory Management **O**

August 27-29, 2024
\$1,600; Discount Rate: \$1,440

Explore the impact of inflated inventory levels, diagnose process constraints, and leverage techniques to improve performance.

Fulfillment Operations Management **O**

September 4-6, 2024
\$1,600; Discount Rate: \$1,440

Acquire a primary understanding of end-to-end fulfillment operations from forecasting to delivery.

Introduction to Supply Chain Analytics **O**

July 23-25, or September 17-19, 2024
\$1,600; Discount Rate: \$1,440

Learn foundational techniques to evaluate logistics and supply chain performance.

Processes and Tools for Supply Chain Success **M**

October 21-24, 2024
\$2,400; Discount Rate: \$2,160

Learn tools, techniques, and approaches to define, analyze, and improve each major SCOR® function and process area.

Strategic Procurement and Purchasing **O**

September 4-6, 2024
\$1,600; Discount Rate: \$1,440

Learn basic principles of purchasing and develop strategies in supplier negotiations impacted by economic and regulatory issues.

Supply Chain Security and Risk Management **L**

November 18-21, 2024
\$2,400; Discount Rate: \$2,160

Learn a practical process that applies intelligence analysis and risk management to anticipate, mitigate, and avoid supply chain risks.

Transportation Operations and Sourcing **O**

August 20-22, or October 22-24, 2024
\$1,600; Discount Rate: \$1,440

Discover modal options, analyze freight needs, and explore negotiation tactics to improve service levels and reduce costs.

[View programs](#) 

Analytics

Complete three programs to earn a professional certificate in Analytics.

Applied Analytics: Essential Tools and Techniques

September 30-October 3, 2024
\$3,100; Discount Rate: \$2,790

Learn how to leverage data and apply analytical techniques to gain valuable insights and support decision-making in a variety of business and operational scenarios.

Introduction to Analytics: Transforming Data into Insights

November 5-7, 2024
\$2,100; Discount Rate: \$1,890

Survey common tools and techniques for data analysis with a focus on supporting evidence-based business decisions.

Leading with Analytics

November 18-20, 2024
\$2,100; Discount Rate: \$1,890

Learn analytics tools and techniques that can help leaders use vast amounts of data to solve challenging real-world problems.

Introduction to Supply Chain Analytics

July 23-25, or September 17-19, 2024
\$1,600; Discount Rate: \$1,440

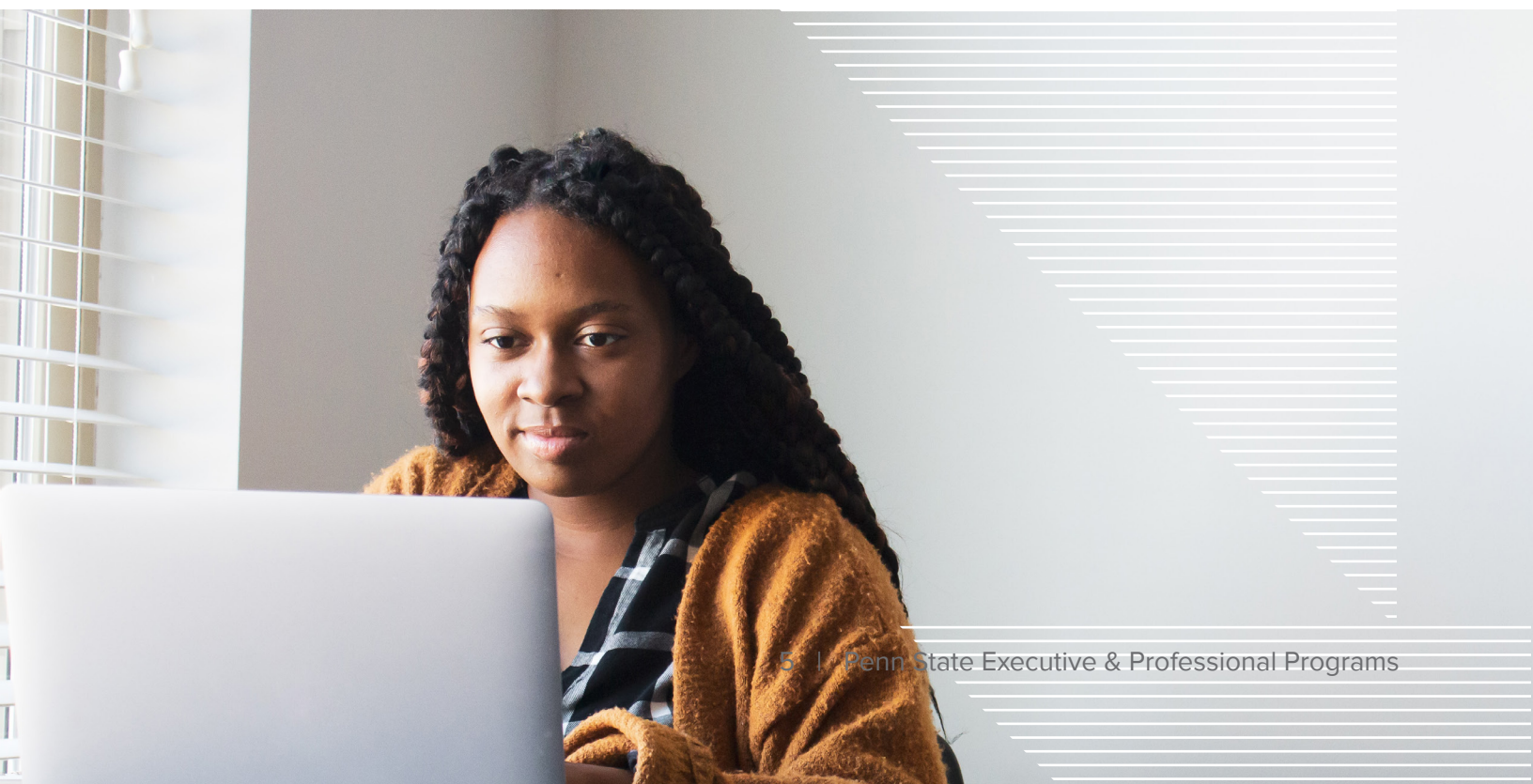
Introduce yourself to data analytics best practices and apply your techniques to logistics and supply chain performance.

Supply Chain Security and Risk Management

November 18-21, 2024
\$2,400; Discount Rate: \$2,160

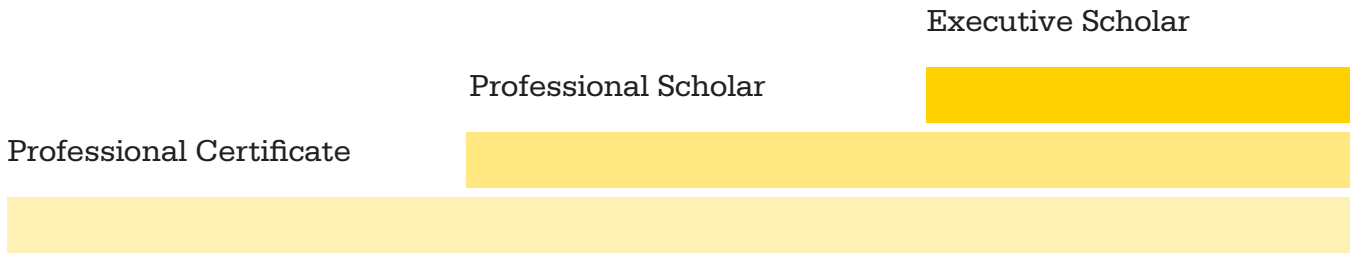
Learn a practical process that applies intelligence analysis and risk management to anticipate, mitigate, and avoid supply chain risks.

[View programs](#) 



Professional Certificates

Earning a Professional Certificate is a win-win for you and your organization. Your certificate will prepare you to manage new responsibilities, address organizational competency gaps, and contribute to broader enterprise goals. Earn multiple certificates to become a **Professional** or **Executive** scholar. These premium scholar statuses demonstrate commitment to professional development.



Complete three programs to earn one of the following Professional Certificates:

- Analytics
- Architecting Strategy Execution
- Strategy and Organizational Performance
- Supply Chain Leadership
- Supply Chain Management
- Supply Chain Operations

Complete two Professional Certificates to become a **Professional Scholar**, and you'll also be awarded:

- Professionally framed certificate

Complete three Professional Certificates to become an **Executive Scholar**, which awards you:

- Engraved award
- 1-year membership to the Penn State Alumni Association
- Attendance to the Center for Supply Chain Research® Leadership Forum

Add an Emphasis

To expand your qualifications, earn a Professional Certificate with an Emphasis of your choice. To add an emphasis, select two programs in one of our main portfolios (Leadership & Strategy, Supply Chain, or Analytics) and a third program from another portfolio. Some of our most popular professional certificates with emphasis are:

- Analytics - emphasis in Organizational Performance
- Analytics - emphasis in Supply Chain Leadership
- Strategy & Organizational Performance - emphasis in Supply Chain Leadership
- Supply Chain Leadership - emphasis in Organizational Performance

Custom certificate

Your Professional Certificate should match your professional goals—no matter how diverse and unique they are. Break the mold with a cross-disciplinary custom certificate. Collaborate with us to build a specialized learning path that combines programs across portfolios.

Qualify for reduced rates

Did you know there are several ways to qualify for a reduced rate?

- Participants who commit to **earn a Professional Certificate** (three programs)
- **Military or government** employees
- **Alumni** of Penn State
- **Teams of 3+** participants from the same organization
- **CSCR**® Corporate Sponsors and other affiliated groups



Customize for your team

All programs may be customized for your team. We can adjust program content, length, time, and location to meet your organization's goals. The level of customization is entirely up to you and can be adjusted according to your learning needs, schedule, and budget.

Let's explore your options

Speak with one of our Learning Specialists to discuss your learning goals, program availability, certificate paths, and possible reduced rates.

Request information



Schedule a meeting



PennState
Smeal College of Business

Penn State Executive &
Professional Programs

Penn State Executive & Professional Programs

Smeal College of Business

The Pennsylvania State University

220 Business Building, University Park, PA 16802

www.psep.smeal.psu.edu

psep@psu.edu

800-311-6364

Penn State is an equal opportunity, affirmative action employer, and is committed to providing employment opportunities to all qualified applicants without regard to race, color, religion, age, sex, sexual orientation, gender identity, national origin, disability or protected veteran status. Nondiscrimination: <https://policy.psu.edu/policies/ad85>. UBR BUS 24-32-JH