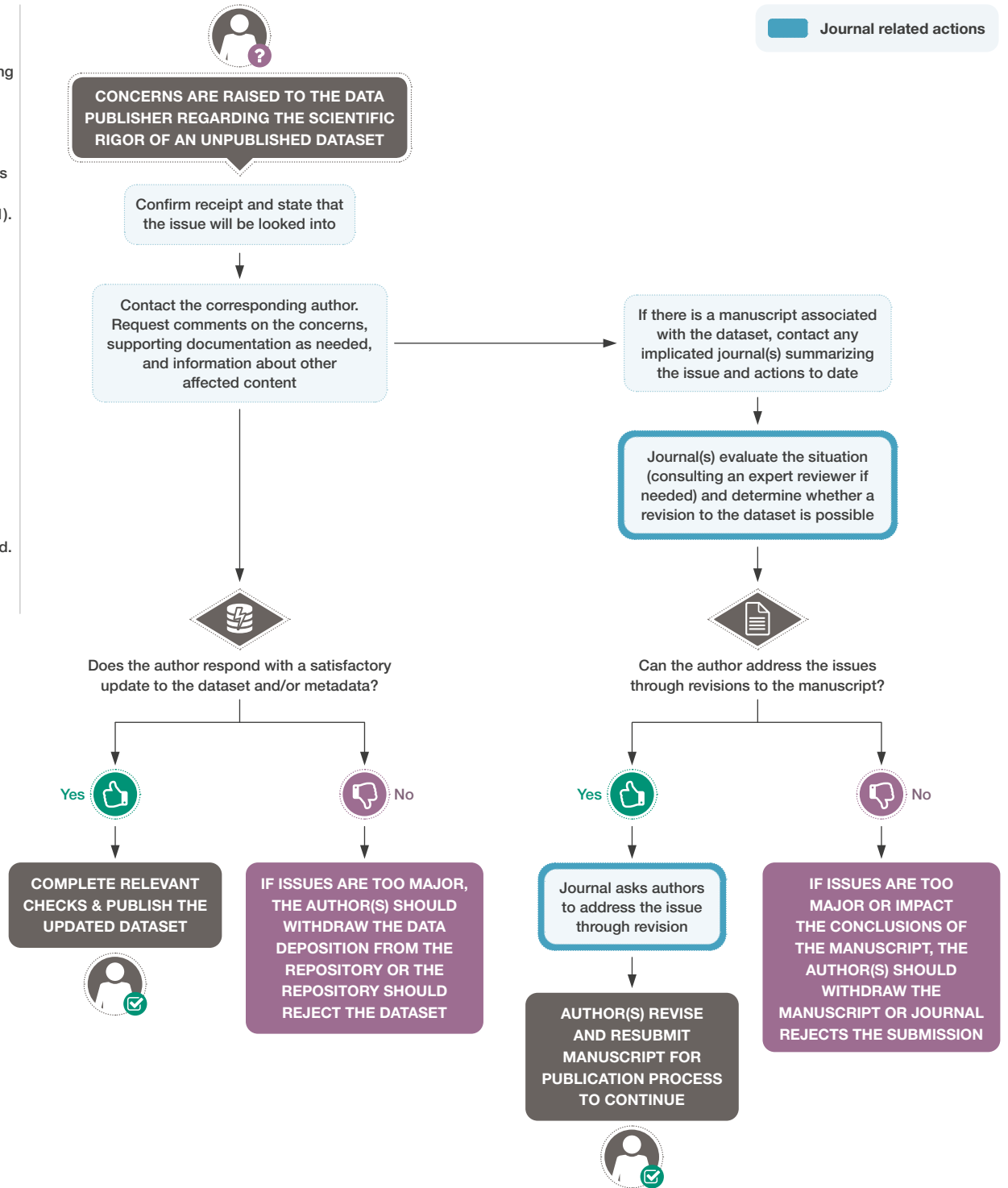


Scientific Rigor Flowchart

Unpublished Data

Notes

- Data publishers may find the CLUE guidelines relevant when investigating issues of research rigor. Wager *et al* Cooperation & Liaison between Universities & Editors (CLUE): recommendations on best practice. Res Integr Peer Rev 6, 6 (2021). <https://doi.org/10.1186/s41073-021-00109-3>
- There may be instances where rigor imposes a risk (such as by exposing participants' identifiable information), recommendations for addressing such risks are available at <https://doi.org/10.5281/zenodo.5391293>
- There may be cases in which a dataset is not published but a journal article has been published. Journal editors should follow the relevant COPE guidelines.



The FORCE11 & COPE Research Data Publishing Ethics Working Group Recommendations for the handling of ethical issues around data publication are available at <https://doi.org/10.5281/zenodo.5391293>