

**EXPLANATION**

Qta  
Stream terrace deposits and alluvium, undifferentiated

Phonolite porphyry  
Dark-gray to black rock with conspicuous crystals of white feldspar

Jsr  
Jsl  
Jsh  
Jsb  
Sundance formation  
Jsr, Redwater shale member. Gray-green shale with thin sandstones in lower part; fossiliferous gray limestones in upper part. Forms slopes. ls, limestone beds.  
Jsl, Lusk member. Yellow poorly cemented fine-grained sandstone and siltstone. Forms gentle slopes.  
Jsh, Hulett sandstone member. Yellow massive sandstone. Forms steep cliffs.  
Jsb, Stockade Beaver shale member. Gray-green shale with thin fine-grained sandstones. Forms slopes

Jgs  
Gypsum Spring formation  
White massive gypsum with interbedded red mudstone

Ts  
Spearfish formation  
Red siltstone and sandstone with interbedded red shale

Talus and landslide material  
Black pattern where composed of mixed rock types. Where composed chiefly of one rock type, color is same as rock type contained

Contact, dashed where approximately located

Indefinite contact  
Contacts indefinitely located and contacts of surficial deposits

Concealed contact

Fault, dashed where approximately located

Strike and dip of beds

Outcrop

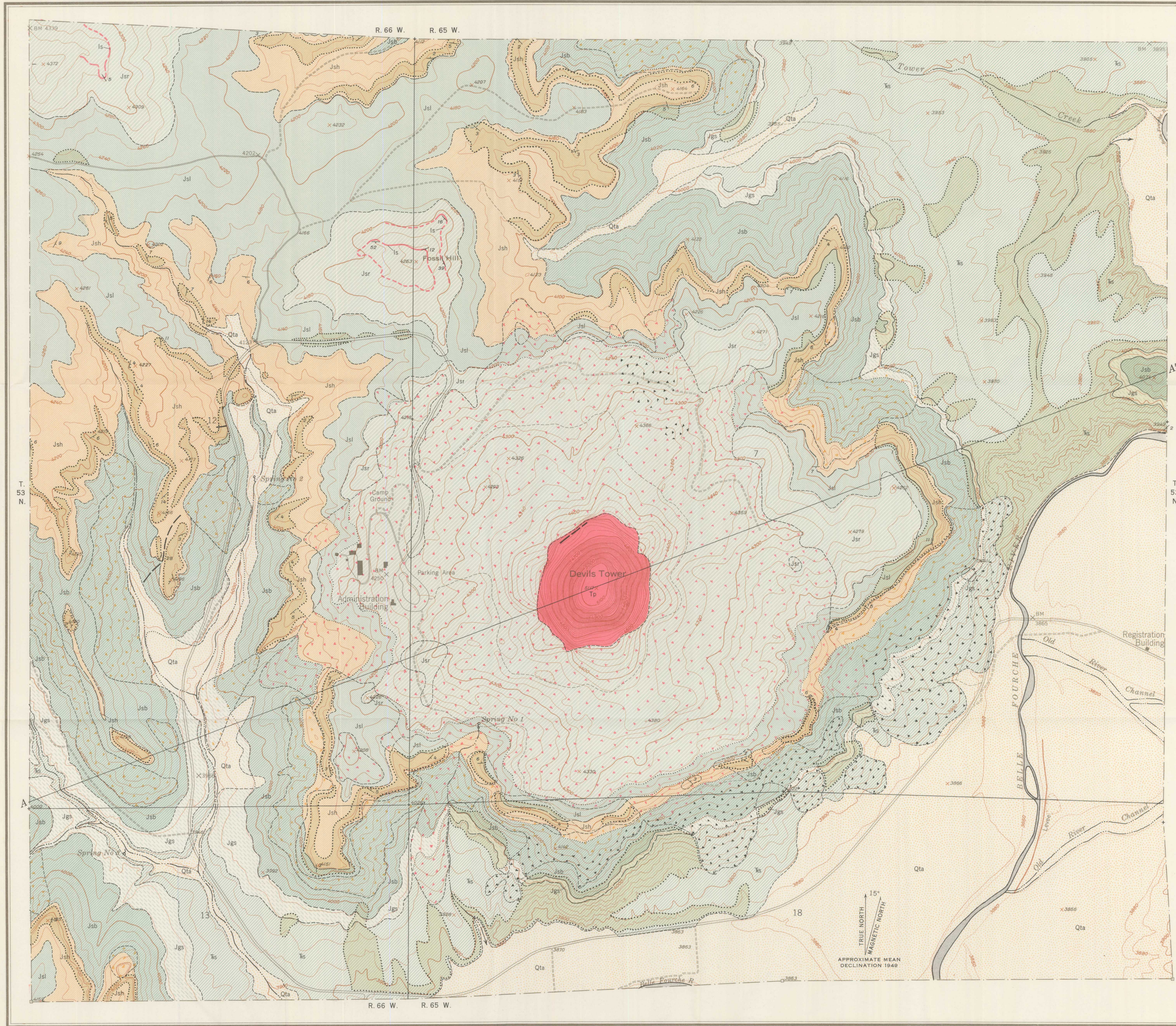
TERTIARY QUATERNARY

JURASSIC

TRIASSIC

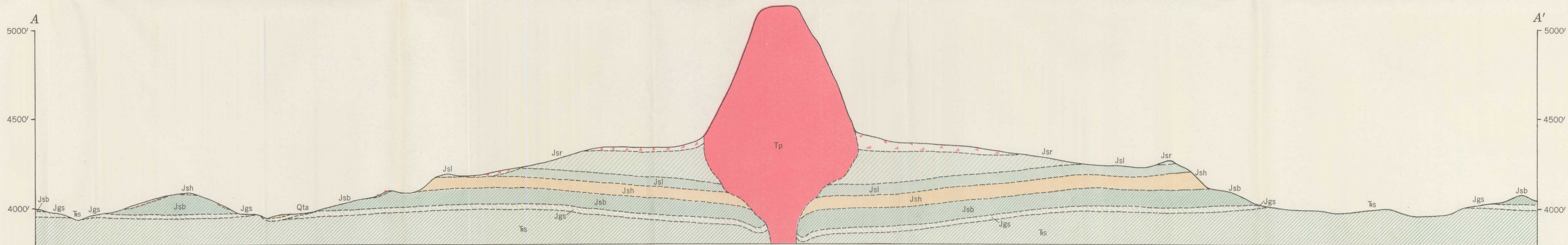
Upper Jurassic

Middle Jurassic



Base from U. S. Geological Survey special topographic map, 1949

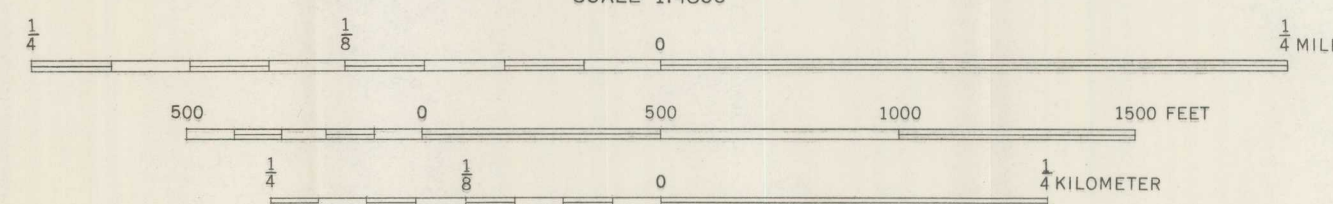
Geology by Charles S. Robinson, 1954



INTERIOR—GEOLOGICAL SURVEY, WASHINGTON, D. C. M R-1518-1956

GEOLOGIC MAP AND SECTION OF DEVILS TOWER NATIONAL MONUMENT, WYOMING

SCALE 1:4800



CONTOUR INTERVAL 20 FEET  
DOTTED LINES REPRESENT HALF INTERVAL CONTOUR  
DATUM IS MEAN SEA LEVEL