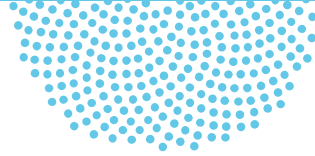




## FIGURES GUIDE / GUÍA DE FIGURAS



**This guide on how to avoid the main errors in graphics presents the improved version on the right and the rule as a caption.**

Esta guía sobre cómo evitar los principales errores en la presentación de gráficos, presenta la versión mejorada a la derecha, y la recomendación al pie.

Reference / Referencia:

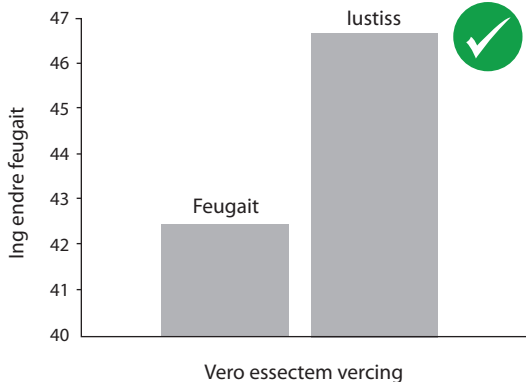
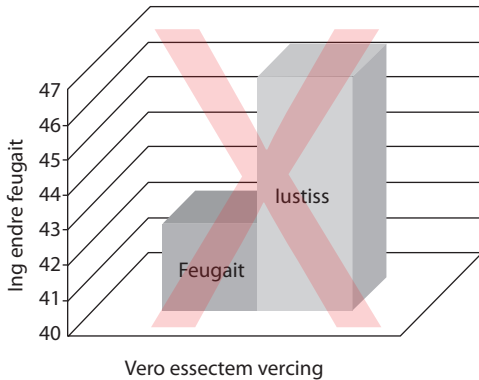
Kosslyn, S. M. (2006). *Graph Design for the Eye and Mind*. Oxford University Press, New York.



Incorrect / Forma incorrecta



Correct / Forma correcta

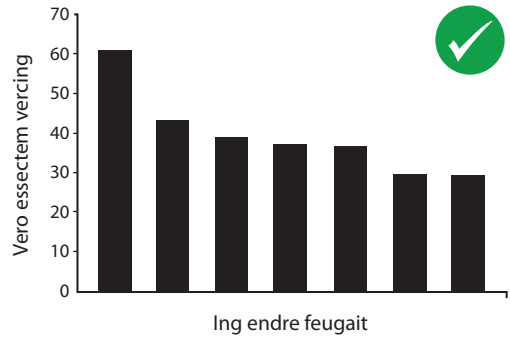
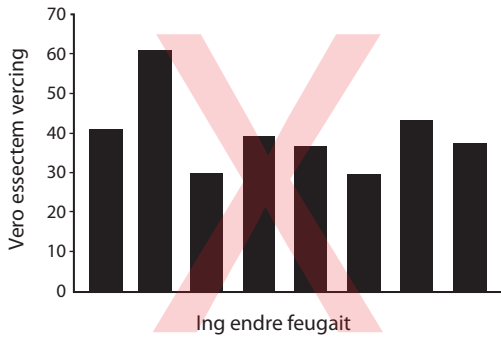


**Example 1.** Avoid graphics or figures in three dimensions, they are easier to understand in two dimensions.

**Ejemplo 1.** Evite gráficos o figuras en tres dimensiones, son más claros en dos dimensiones.

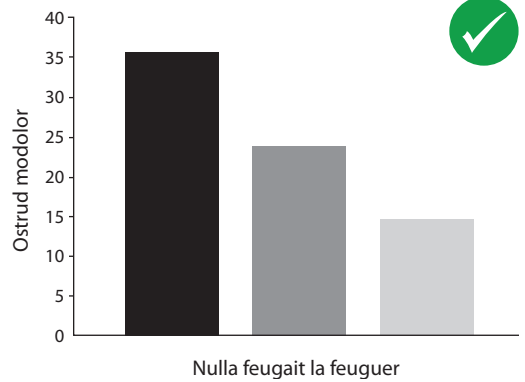
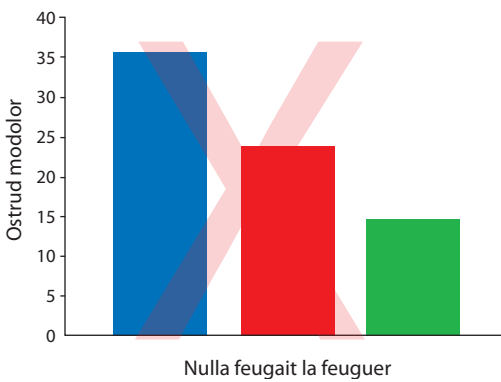
↓ Incorrect / Forma incorrecta

↓ Correct / Forma correcta



**Example 2.** When categories lack a natural order, organize them from highest to lowest.

**Ejemplo 2.** Cuando las categorías no tienen un orden natural, ordénelas de mayor a menor.



**Example 3.** Avoid the unnecessary use of color.

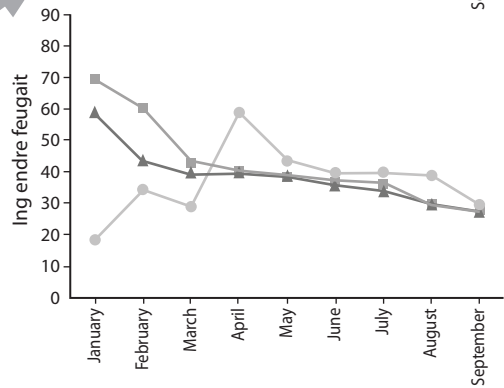
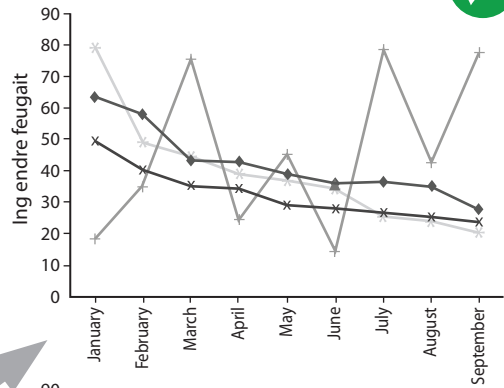
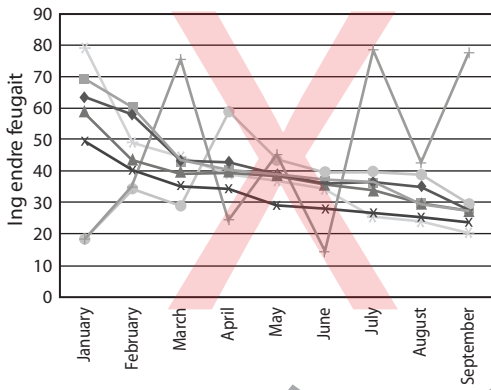
**Ejemplo 3.** Evite el uso innecesario de color.



Incorrect / Forma incorrecta



Correct / Forma correcta



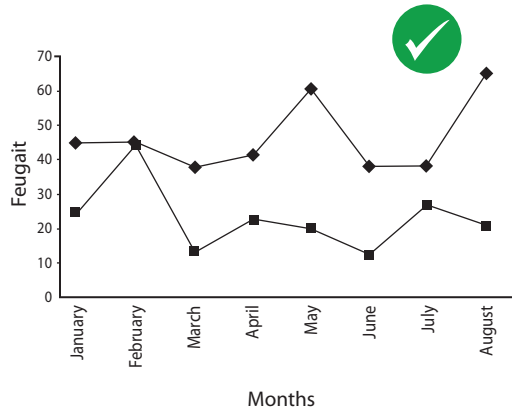
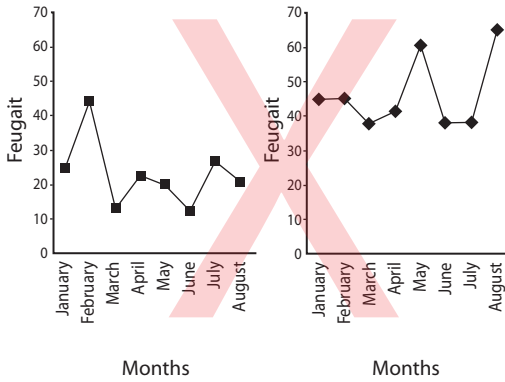
**Example 4.** Do not clutter figure.  
**Ejemplo 4.** No sobrecargue la figura.



Incorrect / Forma incorrecta

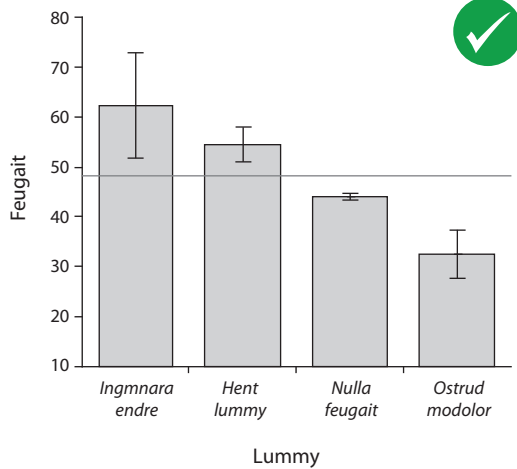
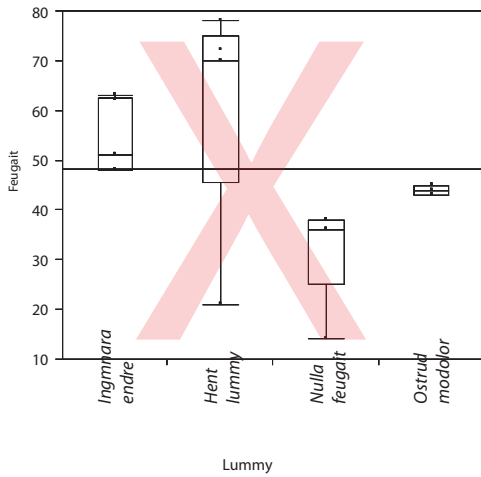


Correct / Forma correcta



**Example 5.** Use only one graph when there is a common axis.

**Ejemplo 5.** Utilice un solo gráfico cuando tiene un eje en común.



**Example 6.** Avoid confusing graphs.

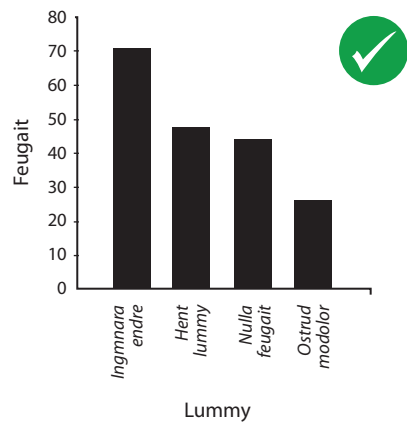
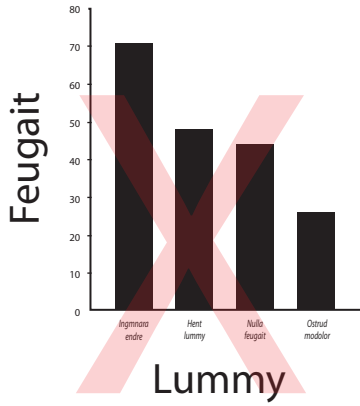
**Ejemplo 6.** Evite gráficos confusos.



Incorrect / Forma incorrecta



Correct / Forma correcta



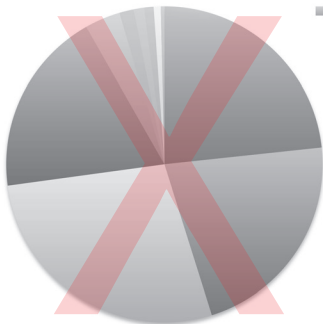
**Example 7.** Write labels with a legible and moderate-size font (Size 10 pts.).  
**Ejemplo 7.** Utilice rotulado moderado y legible (Tamaño 10 puntos).



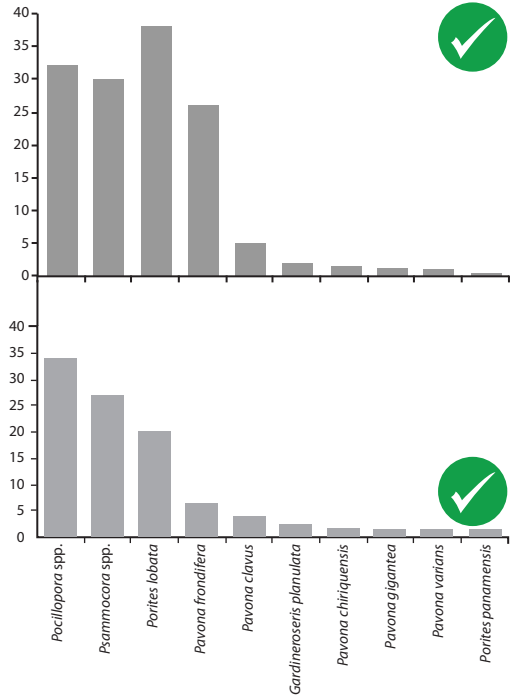
Incorrect / Forma incorrecta



Correct / Forma correcta



- *Pocillopora* spp.
- *Psammocora* spp.
- *Porites lobata*
- *Pavona frondifera*
- *Pavona clavus*
- *Gardineroseris planulata*
- *Pavona chiriquensis*
- *Pavona gigantea*
- *Pavona varians*
- *Porites panamensis*



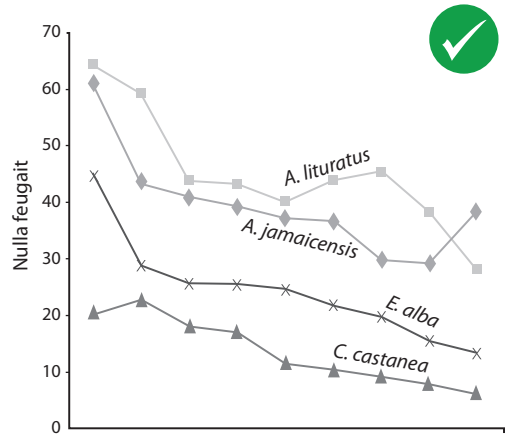
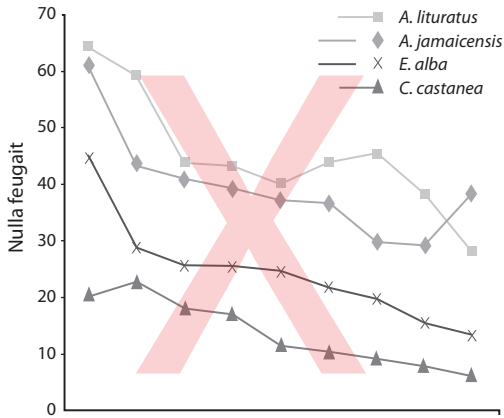
**Example 8.** Use histograms rather than pie charts. They are easier to compare.  
**Ejemplo 8.** Utilice histogramas en lugar de pasteles. Facilitan la comparación.



Incorrect / Forma incorrecta



Correct / Forma correcta



**Example 9.** Avoid indirect labels.

**Ejemplo 9.** Evite los rotulados indirectos.