

PLAY

INSIDE+OUT



R RIDGELAND
MISSISSIPPI
VISITRIDGELAND.COM

INSIDE + OUT



A GUIDE
TO SPORTS
+ OUTDOORS



WELCOME

Some of the state's finest athletic facilities and secure accommodations make tournament and event play a breeze, but the fun really starts after the game. Top-notch outdoor recreation is minutes from open-air upscale shopping, 1600 hotel rooms and more than 150 restaurants, many with patio seating. From the game to the good times, Ridgeland is a winning combination.

For a complete list, visit www.visitridgeland.com.

RIDGELAND TOURISM SPECIAL SERVICES FOR GROUPS

We anticipate your arrival and look forward to working with you. For your convenience, we provide the following services to help make your experience in Ridgeland a positive one:

- \$4.00 per room Reimbursement Policy
- Personal Welcome
- Brochures & Maps
- Event / Tournament Planning Assistance
- Gift Bags
- Secure Hotel Rates

Ridgeland Tourism Commission's staff is available to assist you. Call 601-605-5252 for more information!





PLAY

PARKS + FIELDS + WATER + TRAILS

WINNING FACILITIES



- 4 regulation soccer fields
- 11 lighted baseball fields/softball fields
- Concession and restroom facilities at each complex
- First-class tennis facility with 17 lighted, regulation courts
- 50 lighted regulation tennis courts in the immediate area
- 33,000-acre Barnett Reservoir, perfect for sailing regattas, national & regional fishing tournaments
- Cycling:
 - Road/leisure
 - Mountain Bike
 - BMX
 - Cyclocross
 - Gravel
- National Park: Natchez Trace Parkway
- 18-hole disc golf course
- 5+ challenging, affordable golf courses in the immediate area



FACILITIES TEAM SPORTS

FREEDOM RIDGE PARK

235 School Street • (601) 853-2011

www.ridgelandms.org

A 50-acre athletic facility offering baseball, softball, and soccer fields as well as two playgrounds.

- 4 Lighted 300' Turf Baseball/Softball Fields
- 4 Lighted 360' (120 yards) x 225' (75 yards) Size Soccer Fields
- 10 Batting Cages
- 1-Mile Long Lighted Walking/Jogging Trail
- 2 Playgrounds, including:
Adam's Project, an all accessible playground for children who are handicapped or have special needs.
- 2 Concession/Restroom Facilities
- 4 Covered Picnic Pavilions
- Host of USSSA & Grand Slam Baseball events

**NAMED USA SOFTBALL
COMPLEX OF THE YEAR**





BASEBALL / SOFTBALL

HITE WOLCOTT PARK

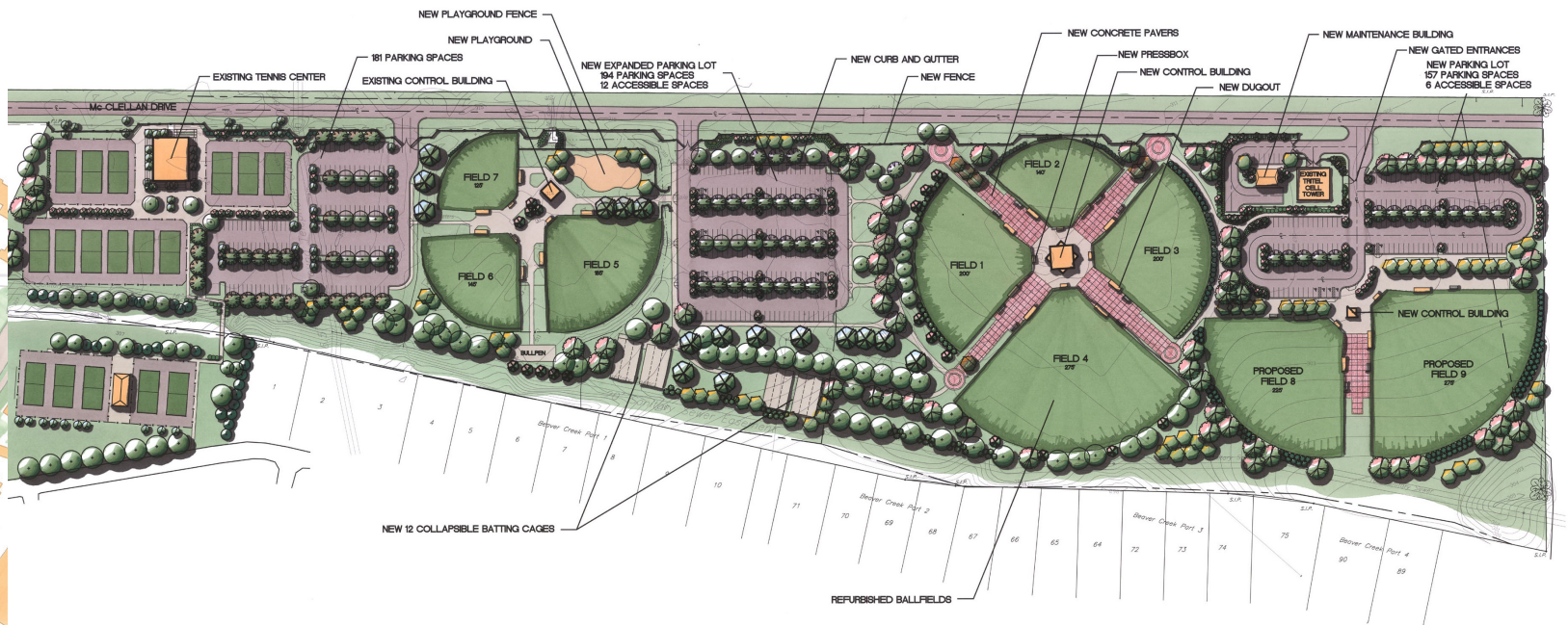
201 McClellan Drive just off Highway 51 • (601) 853-2011

www.ridgelandms.org

A 40-acre athletic facility containing:

- 7 Lighted Baseball/Softball Fields:
 - 1 – 275' field
 - 2 – 200' field
 - 1 – 185' field
 - 1 – 145' field
 - 1 – 140' field
 - 1 – 125' field
- 1 Playground
- 18 Batting Cages
- 2 Bullpens
- Nature Trail
- 2 Concession/Restroom Facilities
- Host of USSSA & Grand Slam Baseball events

22 JAMES FARRELL USA SOFTBALL AWARDS OF EXCELLENCE





FACILITIES

TENNIS / FAMILY FUN



RIDGELAND TENNIS CENTER

201 McClellan Drive • (601) 853-1115

www.facebook.com/ridgelandtenniscenter

A full-service public tennis facility containing:

- 17 Lighted Hard Tennis Courts
- Men's and Women's Locker Rooms
- 2,000 Square Foot Covered Porch for Viewing
- Fully-Stocked Tennis Pro Shop
- 4 Pickleball Courts



FRIENDSHIP PARK

475 Lake Harbour Drive • (601) 853-2011

www.ridgelandms.org

- Large Lighted Covered Pavilion
- 1-mile Lighted Walking/Jogging Trail
- Fitness Court
- Playground
- Picnic Tables and Grills
- Restroom Facilities



DISC GOLF / TRAILS

OLD TRACE PARK

Post Road at Barnett Reservoir • (601) 853-2011
www.ridgelandms.org

A spacious park overlooking the Barnett Reservoir containing:

- Covered Pavilions
- Picnic Tables and Grills
- Playground
- Annual Mississippi Symphony Pepsi Pops Concert



CHISHA FOKA MULTI-USE TRAIL / RIDGELAND MULTI-USE TRAILS

(601) 853-2011
www.ridgelandms.org

Ridgeland's 14.75-mile multi-use trails provide residents and visitors with a superb outdoor recreational amenity.

- Easy Access to the Bill Waller Craft Center, Barnett Reservoir and Natchez Trace Parkway
- Side trails available with access to schools, shops and businesses
- Host to Heatwave Classic Triathlon

DISC GOLF COURSE OLD TRACE PARK

Post Road at Barnett Reservoir • (601) 856-6574
www.therez.ms.gov

Variation of open, low ceiling and wooded shots, water in play on 5 holes, out-of-bounds walking path in play on several holes featuring:

- 18 holes
- Par 54
- 5,700 feet
- Flat and lightly wooded
- Concrete tee pads
- Cart friendly

The course includes 18 holes, each with a single tee location. The average distance for holes on the course is approximately 330' with the longest hole being approximately 480'.

The course includes a course map at the beginning, hole signage at each tee box, number plates on each corresponding basket, multiple benches throughout the course, and additional trash receptacles.

The course layout and individual holes were designed in accordance to the PDGA recommendations and have been designed to allow multiple configurations in the future.

The course is designed to accommodate all skill levels and uses existing features and topography to create a fun and challenging experience.



OUTDOOR CYCLING



CYCLING IN RIDGELAND

www.visitridgeland.com/what-to-do/trails-parks-cycling/ridgeland-cycling-trails

Ridgeland is Mississippi's premier destination for cycling, known and recognized nationally as a Bicycle Friendly Community.

Road/Leisure

- Natchez Trace Parkway
- Chisha Foka Trail
 - + Scenic 14.75-mile Multi-Use Trails
- Nine miles of city bike lanes
- Natchez Trace Century Ride and Heatwave Classic Triathlon
- Cheers and Gears Ride
- Bike Your Park Day
- Dead Man Gravel Grind



Mountain Bike Trails/Cyclocross

- Tri-County Mountain Bike Association
(601) 400-4448 / www.tricountymtb.org
- IMBA/SORBA Chapter
- 10 miles of some of the best single track in MS
- 27'x37' Covered Pavillion, Firepit & Pump Track
- Host of Fat Tire Festival, MS Cyclocross Series

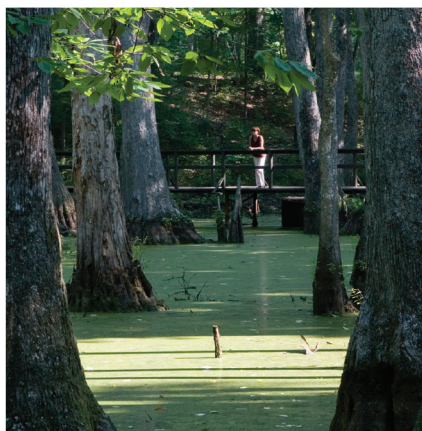
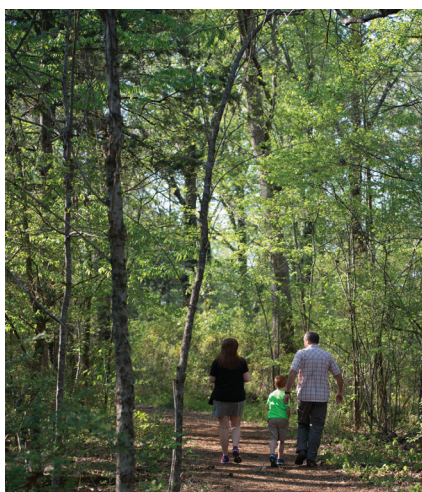


BMX Track

- Magnolia Ridge BMX Park
(601) 572-7716 / www.usabmx.com/tracks/1782
- Mississippi's only BMX track
- Host BMX Gold Cup Qualifier
- BMX State Championship Qualifier



THE PARKWAY



NATCHEZ TRACE PARKWAY

(800) 305-7417

www.scenictrace.com

This historic, 444-mile National Scenic Byway links Natchez, Mississippi with Nashville, Tennessee and crosses some of the most beautiful terrain in the states of Mississippi, Alabama and Tennessee.

Activities include:

- National Scenic Byway and All-American Road
- One of 10 Best Biking/Motorcycling Roads in America
- Hiking
- Running/Walking
- RVing
- Bicycling
- Motorcycling
- Bird Watching
- Wildlife Exploration
 - Almost 400 types of wildlife
 - Over 800 types of plants
- Educational Exhibits
- Camping
- Host of the Natchez Trace Century Ride and Heatwave Classic Triathlon



OUTDOOR THE REZ

BARNETT RESERVOIR 'THE REZ'

Spillway Road • (601) 856-6574
www.therez.ms

Ridgeland is a waterfront town, on the sparkling shores of "The Rez" (that's what locals call the Reservoir — all 33,000 acres of it). That makes Ridgeland a prime destination for endless hours of boating, sailing, fishing, paddling, water sports, camping, picnicking and bird watching.

- 33,000 acres of surface area
- 105 miles of shoreline
- 45 miles long and 3 miles broad at its widest point
- Numerous Annual Events such as:
 - Heatwave Classic Triathlon
 - Dragon Boat Regatta
 - BASS Open Series & Elite
 - Crappie Tournaments



Activities include:

- Fishing
- Boating/Sailing
- Bird Watching
- Friendship Boat Rental
- Sweet Olive Tour Boat Rental
- Swimming
- Picnicking
- Skiing
- Cycling
- Multi-Use Trail

FISHING

FISHING IN RIDGELAND

(601) 853-2011

www.visitridgeland.com/what-to-do/fishing-paddling-boating

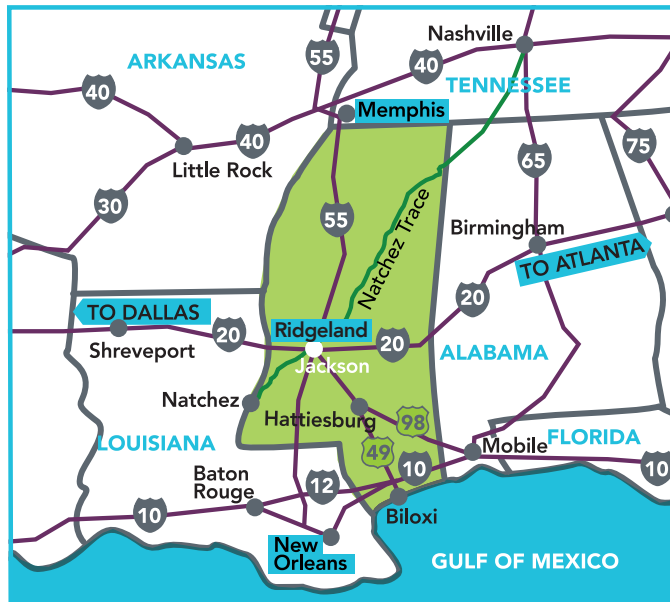
Fertile water makes Barnett Reservoir, aka "The Rez," a natural fish hatchery. Healthy populations of bass, catfish, crappie, bream, sunfish, white bass, striped bass and hybrid stripers all thrive here.

- 33,000-acre lake in the central part of the state
- Bank access with 105 miles of shoreline
- Popular for anglers with bass boats, pontoons, canoes, kayaks and other fishing boats
- Boat launch ramps for personal watercraft
- Rental Boats Available
- Marinas, campgrounds, restaurants, stores and bait stores scattered around the lake
- Fishing Guides Available
- Host to numerous national crappie events
- Host to The Bassmaster Classic and BASS Elite events
- Host to Fishers of Men



Known for quantity of Bass and Crappie.

- An abundance of cover – grass beds, stumps and lily pads
- Numerous old lakes and sloughs – filled with timber and laydowns
- A river system allowing shoreline fishing in high wind conditions
- Lots of shallow water for spawning and deep water for summer months
- Numerous baitfish – gizzard and threadfin shad
- A year-round growing season – the fish are fat from June to April
- No size limit and a 30 fish creel keeps the lake from getting overstocked
- No Pole Limit



MILES TO RIDGELAND FROM:

NEW ORLEANS, LA	198
MEMPHIS, TN	200
BIRMINGHAM, AL	247
LITTLE ROCK, AR	250
ATLANTA, GA	390
DALLAS, TX	412

I-55 Exits 103 and 105



RIDGELAND
MISSISSIPPI

VISITRIDGELAND.COM

INSIDE + OUT

For more information, contact:

Ridgeland Visitors Center

1000 Highland Colony Parkway #6006

601.605.5252 • 1.800.468.6078

www.visitridgeland.com