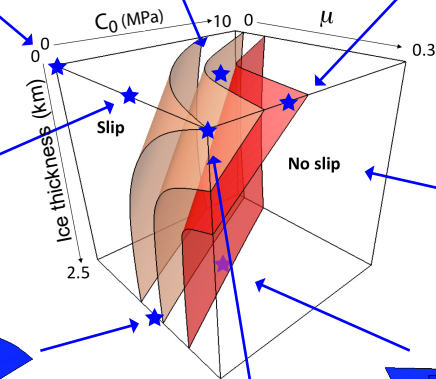


$\mu = 0.15$   
 $C_0 = 5 \text{ MPa}$   
 $\text{Ice} = 0 \text{ m}$   
 $D_{\text{max}} = 2.3 \cdot 10^{-2} \text{ m}$



$\mu = 0.3$   
 $C_0 = 0 \text{ MPa}$   
 $\text{Ice} = 0 \text{ m}$   
 $D_{\text{max}} = 0.1 \text{ m}$

