

Cancer Immunology, Immunotherapy

Increased CD14⁺HLA-DR^{-/low} myeloid-derived suppressor cells correlate with extrathoracic metastasis and poor response to chemotherapy in non-small cell lung cancer patients

Ang Huang^{1,3} · Bo Zhang² · Bo Wang¹ · Fan Zhang¹ · Ke-Xing Fan² · Ya-Jun Guo^{1,2}

¹Cancer Center, Chinese PLA General Hospital, Beijing 100853, People's Republic of China

²International Joint Cancer Institute, The Second Military Medical University, Shanghai 200433, People's Republic of China

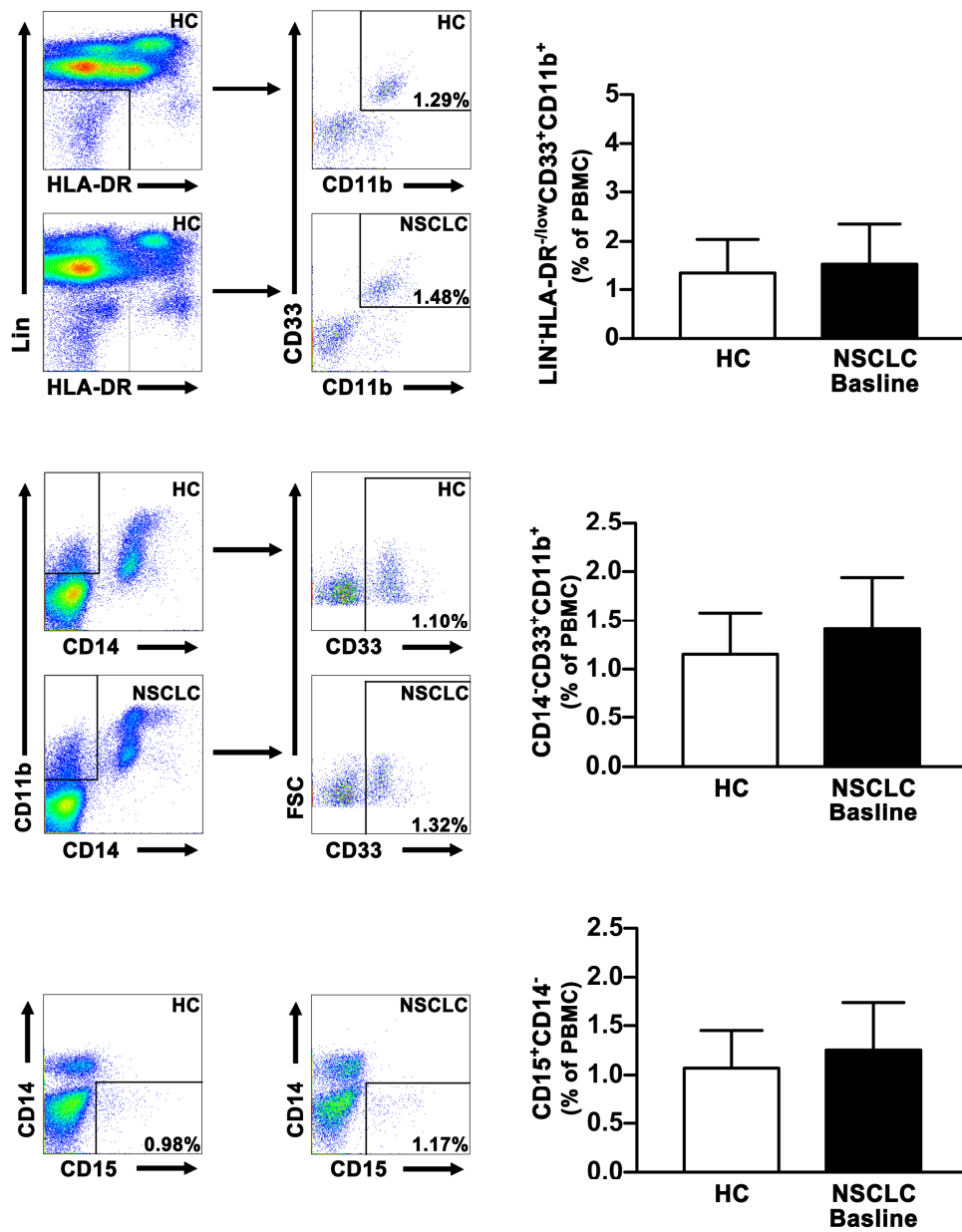
³Department of Infectious Diseases, Beijing 302 Hospital, Beijing 100039, People's Republic of China

A. Huang and B. Zhang contributed equally to this work as first authors.

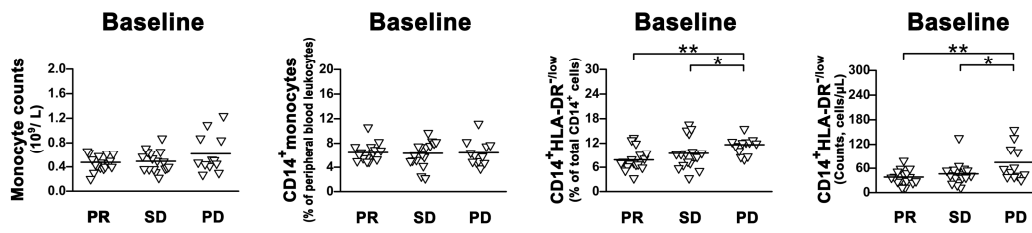
Corresponding author: Ya-Jun Guo, Ph.D., M.D., or Ke-Xing Fan, Ph.D., M.D., Chinese PLA General Hospital Cancer Center and International Joint Cancer Institute, The Second Military Medical University, 800 Xiang Yin Road, New Building West 10-11th Floor, Shanghai 200433, People's Republic of China. E-mail address: yjguo@smmu.edu.cn or kexingfan@gmail.com. Phone: +86-21-81870801; Fax: +86-21-81870801.

Supplementary Table 1. The clinical data for the enrolled subjects with different responses to chemotherapy

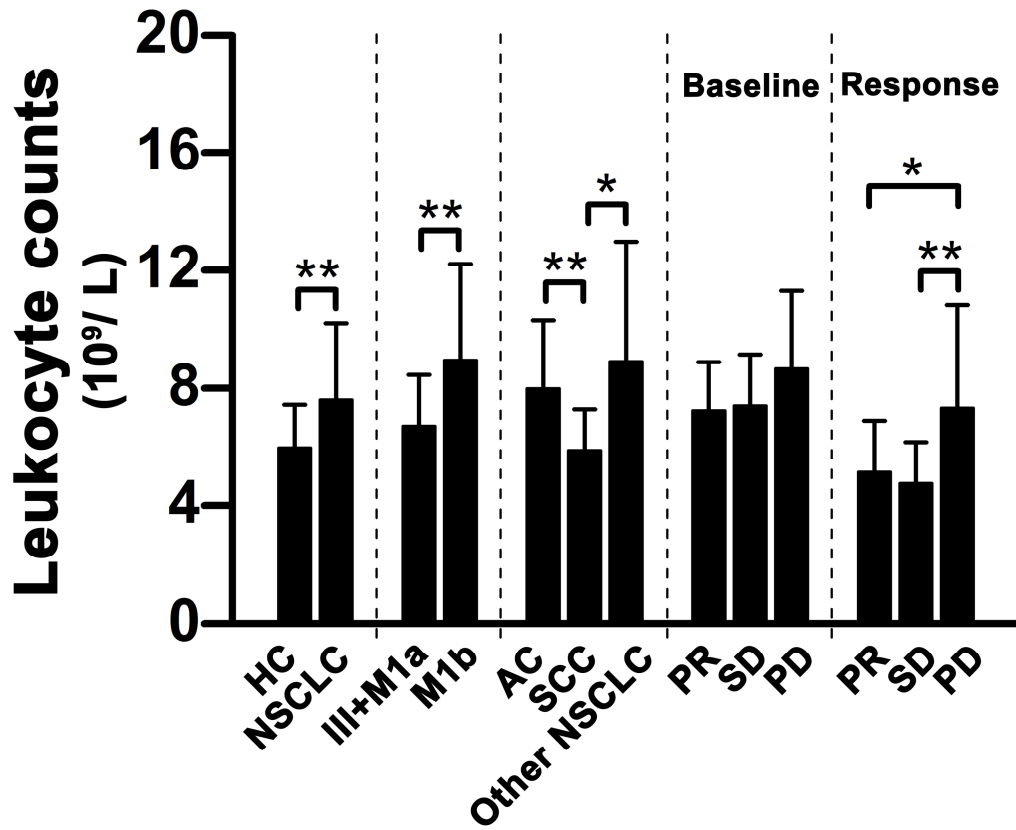
	All cases	PR	SD	PD
Gender(male/female)	27/19	10/7	11/6	6/6
Age(years)	52.19± 8.87	54.89± 7.98	49.11± 8.28	52.66± 10.15
Histological type				
Adenocarcinoma	43	16	15	12
squamous cell carcinoma	3	1	2	0
AJCC stage				
III(unresectable)	7	4	3	0
IV(M1a)	22	8	8	6
IV(M1b)	17	5	6	6
1st line treatment				
Docetaxel + Cisplatin	21	6	7	8
Pemetrexed + Cisplatin	22	10	8	4
Gemcitabine + Cisplatin	3	1	2	0



Supplementary Fig. 1 Representative dot plots and frequencies of Lin⁻HLA-DR⁻CD33⁺CD11b⁺, CD11b⁺CD14⁻CD33⁺ and CD15⁺CD14⁻ cells in NSCLC (n=28) as compared to HC (n=15) PBMC. Bars indicate mean \pm SD.



Supplementary Fig. 2 Baseline frequency and absolute number of CD14⁺HLA-DR^{-/low} cells in NSCLC patients were associated with treatment response to chemotherapy. Each dot represents one individual.



Supplementary Fig. 3 Absolute numbers of peripheral blood leukocytes in different groups. Bars indicate mean \pm SD.