
More completion results of our generative model on ImageNet, Places2 and CMP Facade datasets.

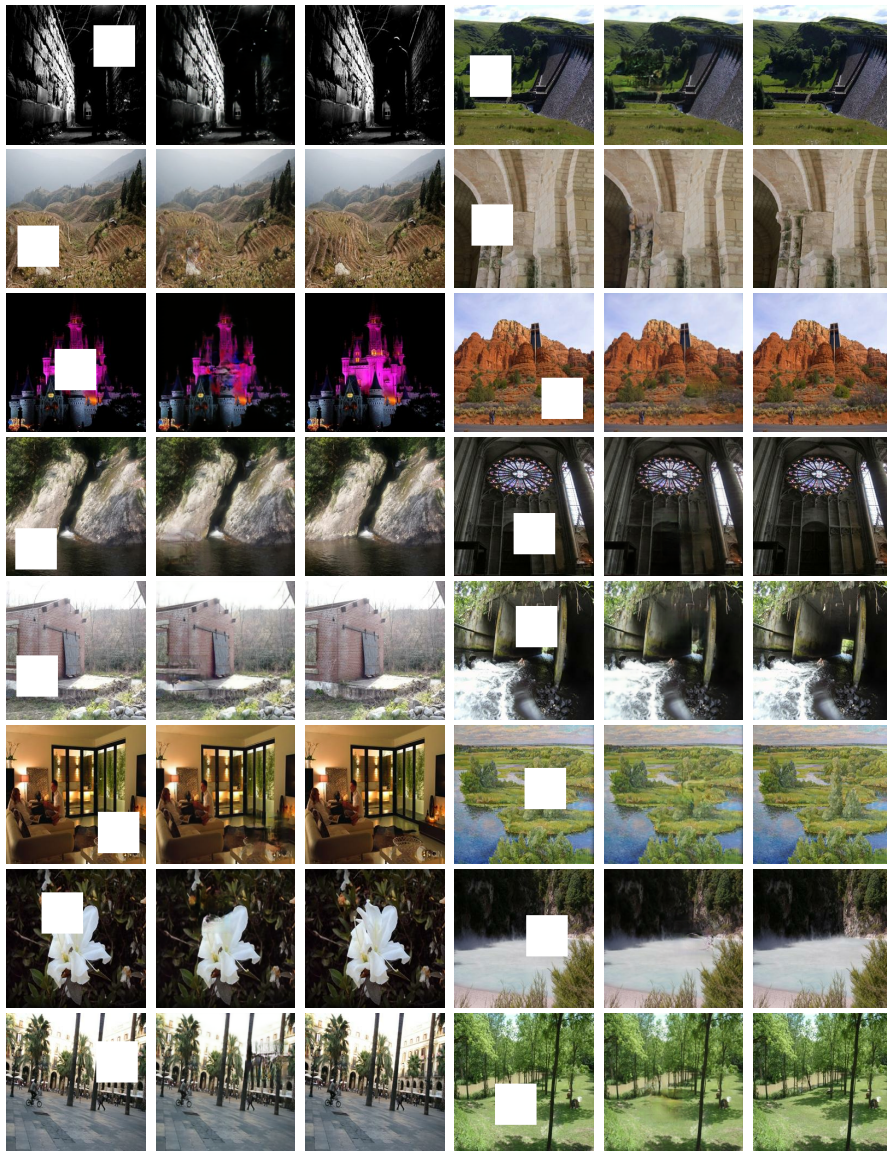


Fig. 11 As shown from left to right in each row, every triad contains the masked input image, the completed result image and the original image. Each input image is sampled and masked from the validation set. Each completed image is directly outputted from the same trained well completion model without any post-processing.

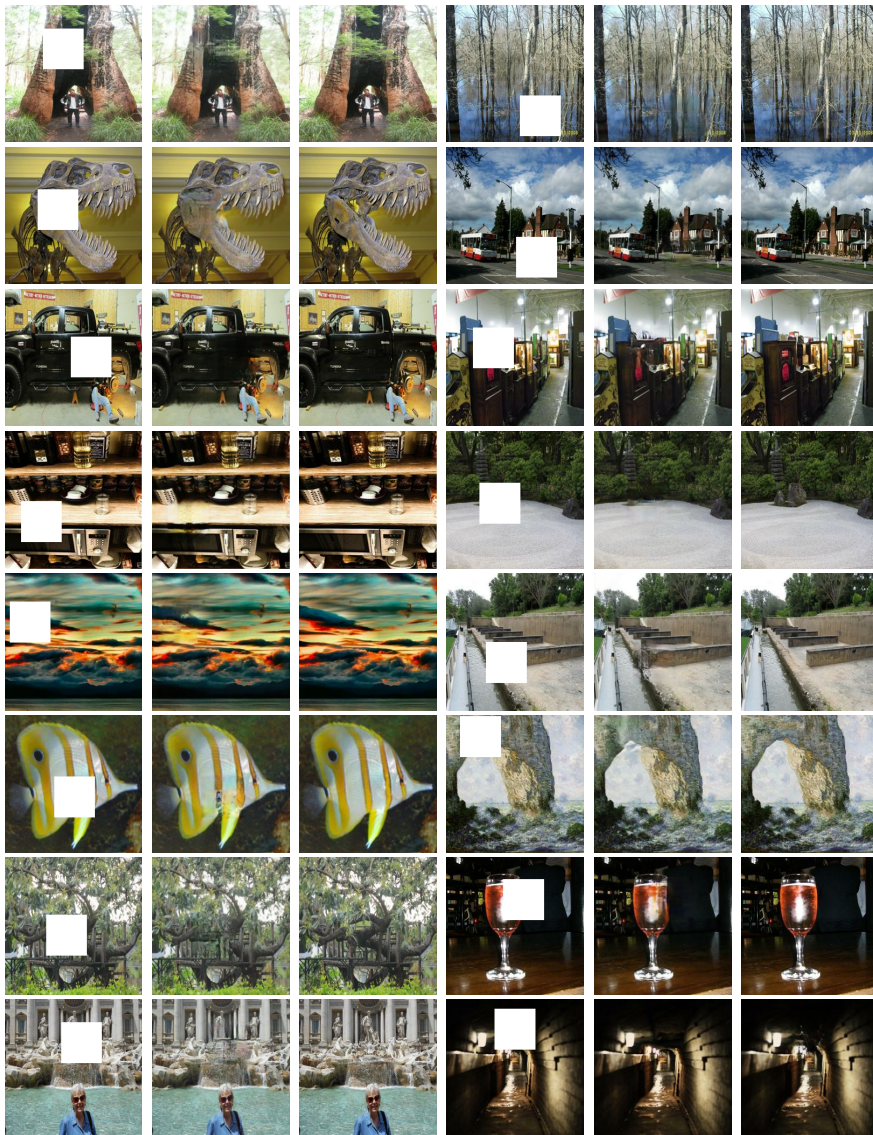


Fig. 12 As shown from left to right in each row, every triad contains the masked input image, the completed result image and the original image. Each input image is sampled and masked from the validation set. Each completed image is directly outputted from the same trained well completion model without any post-processing.



Fig. 13 As shown from left to right in each row, every triad contains the masked input image, the completed result image and the original image. Each input image is sampled and masked from the validation set. Each completed image is directly outputted from the same trained well completion model without any post-processing.