

**Supplementary Figure 1.**



Figure S1. Representative images of six different maize genotypes fed by *Tetranychus urticae* for 15 days.

## Supplementary Figure 2.

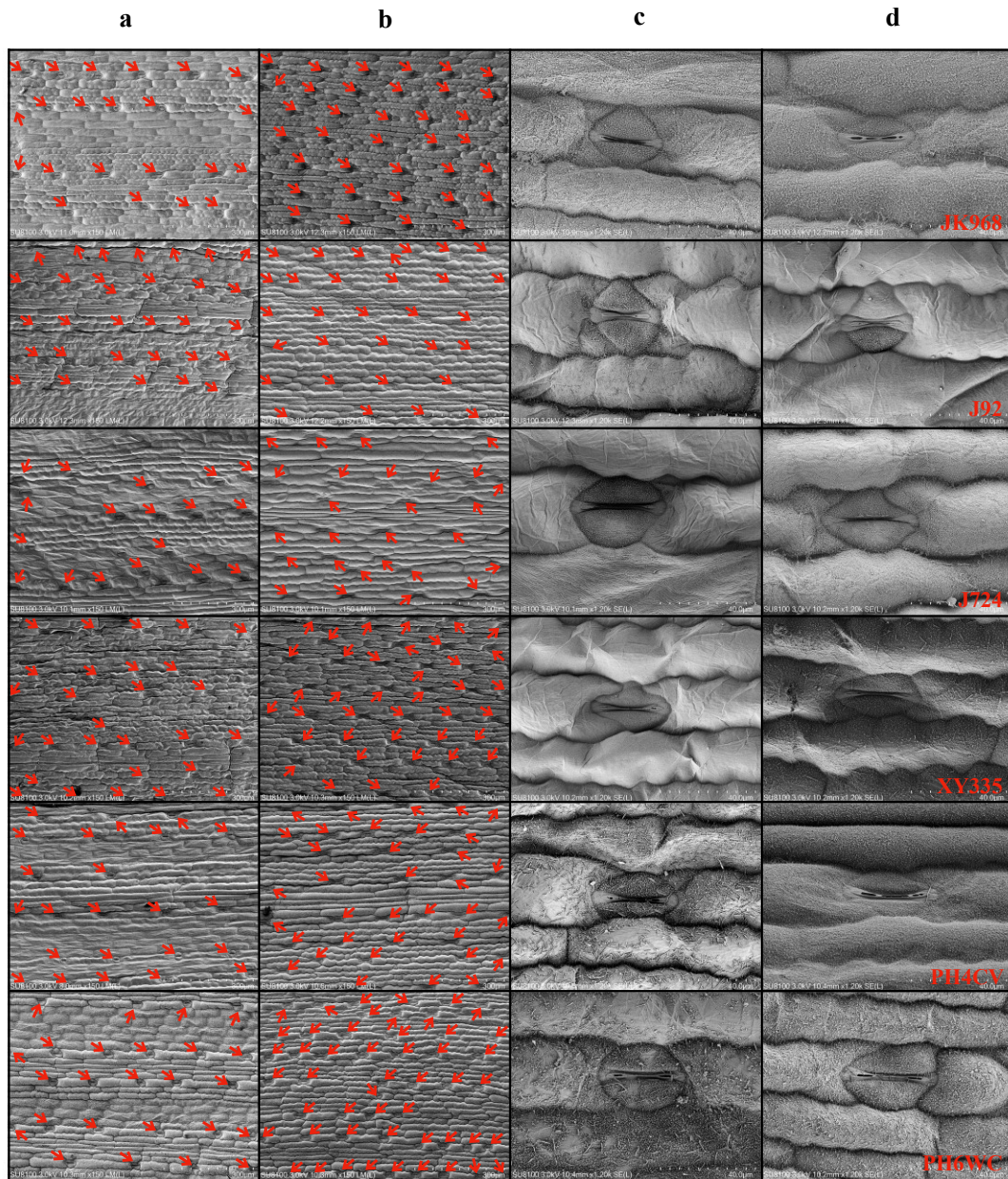


Fig. S2 Electron microscopic images of leaf and stomata in six maize lines on front (rows a and c) and back sides (b and d). Images from each maize line were put in a line and variety names were marked at the last image in red.

### Supplementary Figure 3.

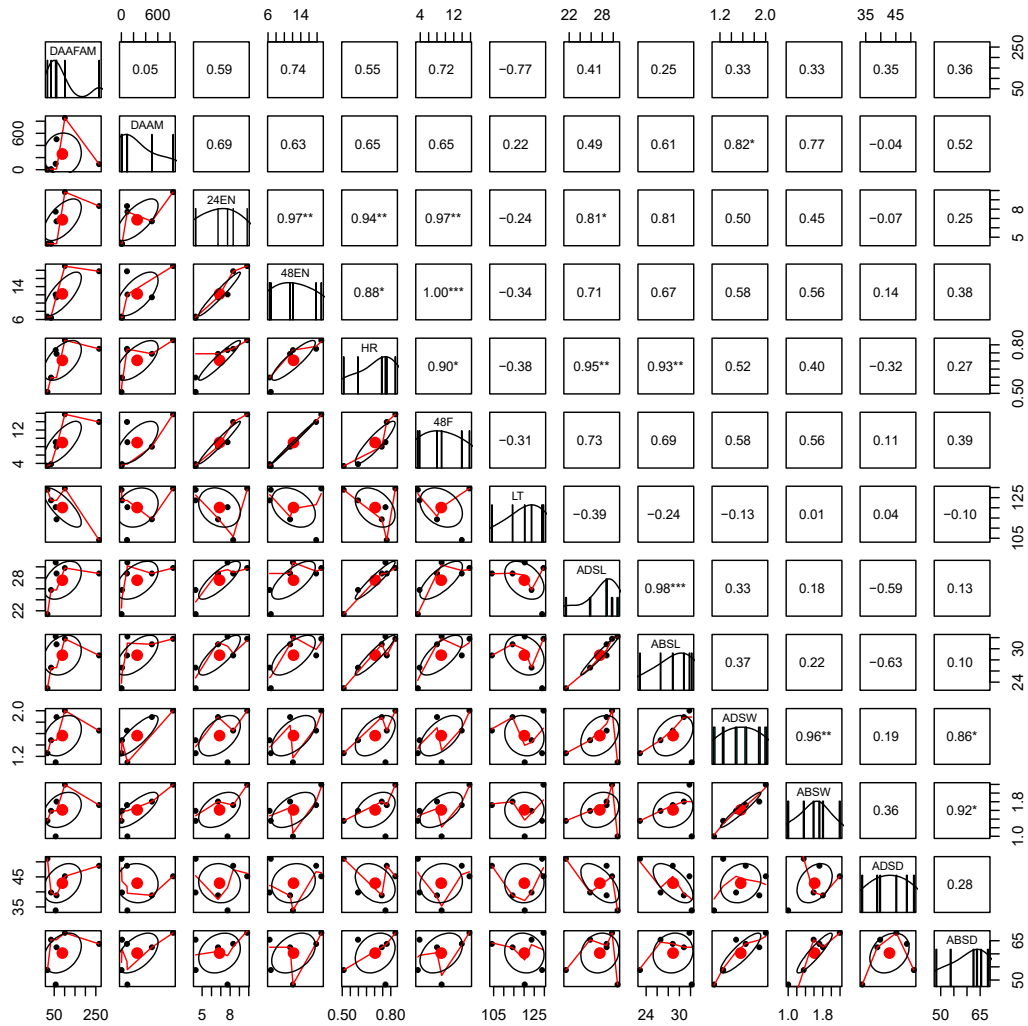


Fig. S3 Correlation between leaf tissue structures indexes and spider mite resistance indexes.

DAAFAM: daily average amount of female adult mite; DAAM: daily average amount of mite;

24EN: 24 h egg number; 48EN: 48 h egg number; HR: hatching rate; 48F: 48 h fertility; ADSL:

adaxial stomatal length ( $\mu\text{m}$ ); ABSL: abaxial stomatal length ( $\mu\text{m}$ ); ADSW: adaxial stomatal width

( $\mu\text{m}$ ); ABSW: abaxial stomatal width ( $\mu\text{m}$ ); ADSD: adaxial stomatal density (number/ $\text{mm}^2$ );

ABSD: abaxial stomatal density (number/ $\text{mm}^2$ ); LT: leaf thickness ( $\mu\text{m}$ ).