

Appendix 1. Supplementary Data

Table S1. BCC park type descriptions (Brisbane City Council, 2006).

Type	Description
Informal Use Park	Developed and used for informal, unstructured recreational and social activities
Community Use Park	Developed with built structures to accommodate both formal and informal community activities
Landscape Amenity Park	Managed to protect and enhance landmarks, signature points and natural features
Natural Area Park	Managed to protect and enhance areas of ecological and biodiversity value
Sport Park	Developed and used for formal, structured sport activities
Corridor Link Park	Developed and used for pedestrian and cyclist access between residential areas and key community destinations
Other Park Land	Developed and used for a range of non park functions such as works depots, drainage reserves, water storage facilities and quarries
Unclassified	Not classified as any of the above park types

Table S2. Measures of association with PC1 and PC2 for each variable used in the PCA.

Variable	PC1 scores	PC2 scores
Clumpiness	-0.207	-0.068
Canopy height	0.378	-0.229
Foliage Projective Cover	0.475	0.024
Plant Area Index proxy	0.332	-0.232
Foliage Height Diversity	0.185	0.442
Proportion tree cover	0.465	0.016
Very low vegetation (0.15-1m)	0.185	0.438
Low vegetation (1-2m)	0.141	0.481
Medium vegetation (2-5m)	-0.025	0.452
High vegetation (5-10m)	0.122	0.072
Very high vegetation (>10m)	0.398	-0.245

Table S3. Description of the three park clusters, including the number of parks, total area of parks, average area per park, percentage of the total park area, and percentage of the total number of parks.

Cluster	# Parks	Area (ha)	Av. Area (ha)	% Total area	% Total # parks
Cluster 1	839	2598.05	3.10	21.12	40.67
Cluster 2	775	3003.76	3.88	24.41	37.57
Cluster 3	449	6701.02	14.92	54.47	21.76
Total	2063	12,302.82	7.3	100	100

Table S4. Distribution of BCC park types across the three clusters

Park Type	Cluster 1			Cluster 2			Cluster 3		
	# parks	% cluster	% park type	# parks	% cluster	% park type	# parks	% cluster	% park type
Informal Use Park	539	64.24	44.55	598	77.16	49.42	73	16.26	6.03
Community Use Park	81	9.65	53.29	62	8	40.79	9	2	5.92
Landscape Amenity Park	84	10.01	38.18	66	8.52	30	70	15.59	31.82
Natural Area Park	51	6.08	13.93	29	3.74	7.92	286	63.7	78.14
Other Park Land	79	9.42	78.22	17	2.19	16.83	5	1.11	4.95
Unclassified	5	0.6	35.71	3	0.39	21.43	6	1.34	42.86
Total	839	100	-	775	100	-	449	100	-

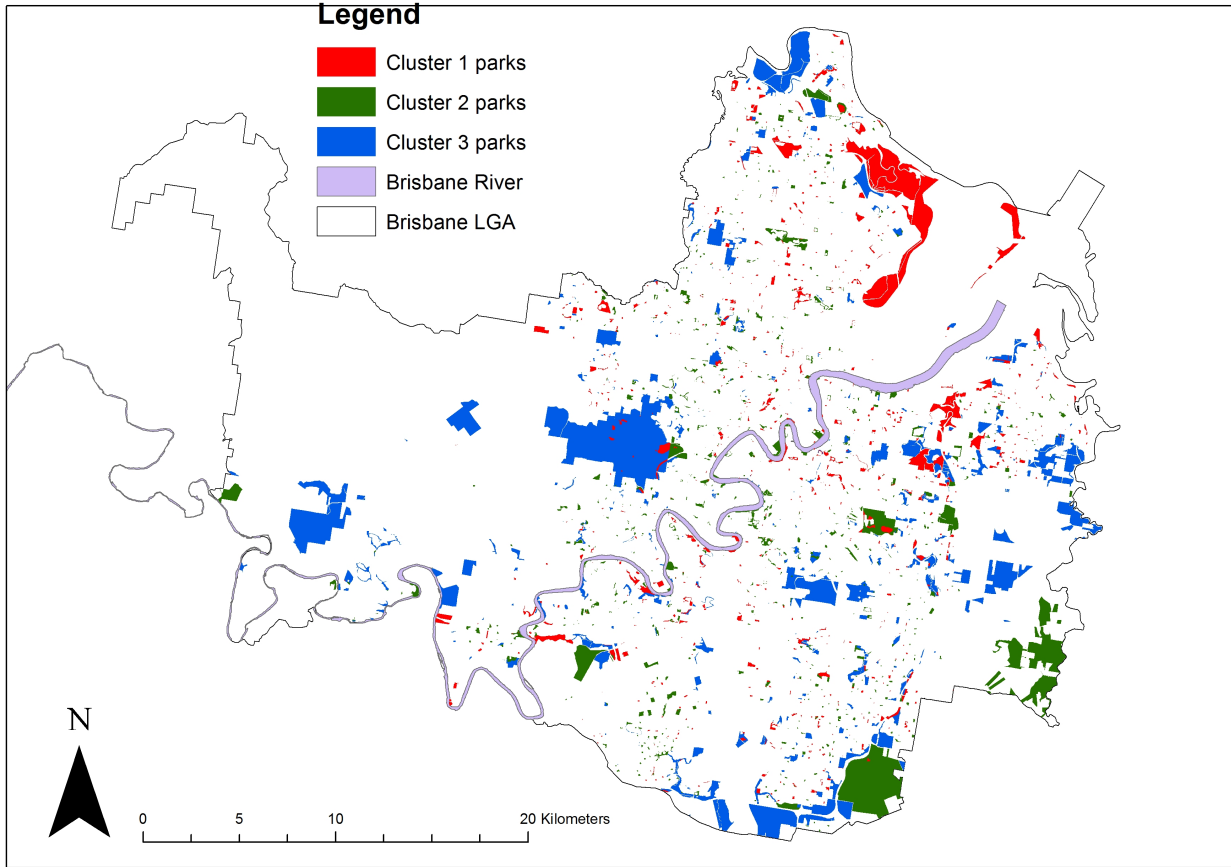


Figure S1. Map of the Brisbane Local Government Area (LGA) showing public park clusters from the agglomerative hierarchical clustering of parks based on the spatial and vertical arrangement of vegetation in each park.

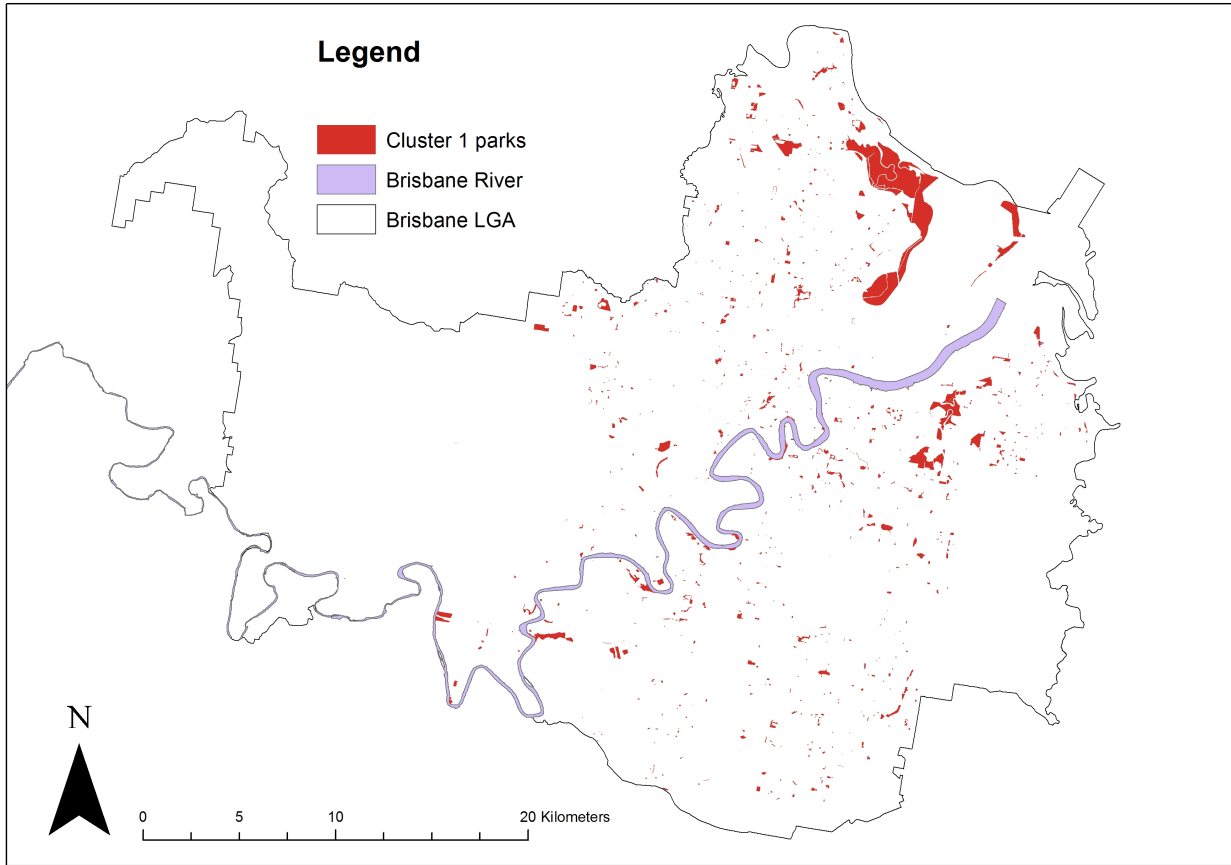


Figure S2. Map of the Brisbane Local Government Area (LGA) showing Cluster 1 public parks from the agglomerative hierarchical clustering of parks based on the spatial and vertical arrangement of vegetation in each park.

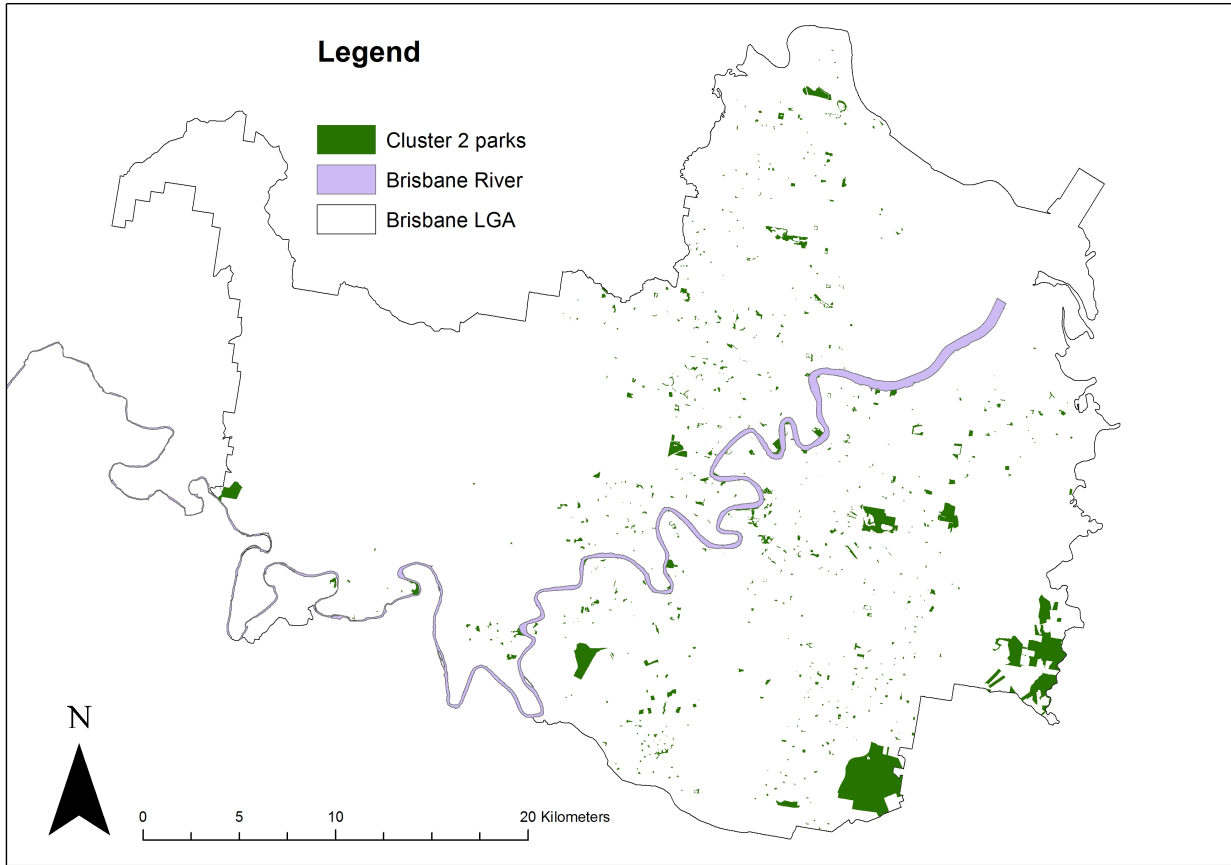


Figure S3. Map of the Brisbane Local Government Area (LGA) showing Cluster 2 public parks from the agglomerative hierarchical clustering of parks based on the spatial and vertical arrangement of vegetation in each park.

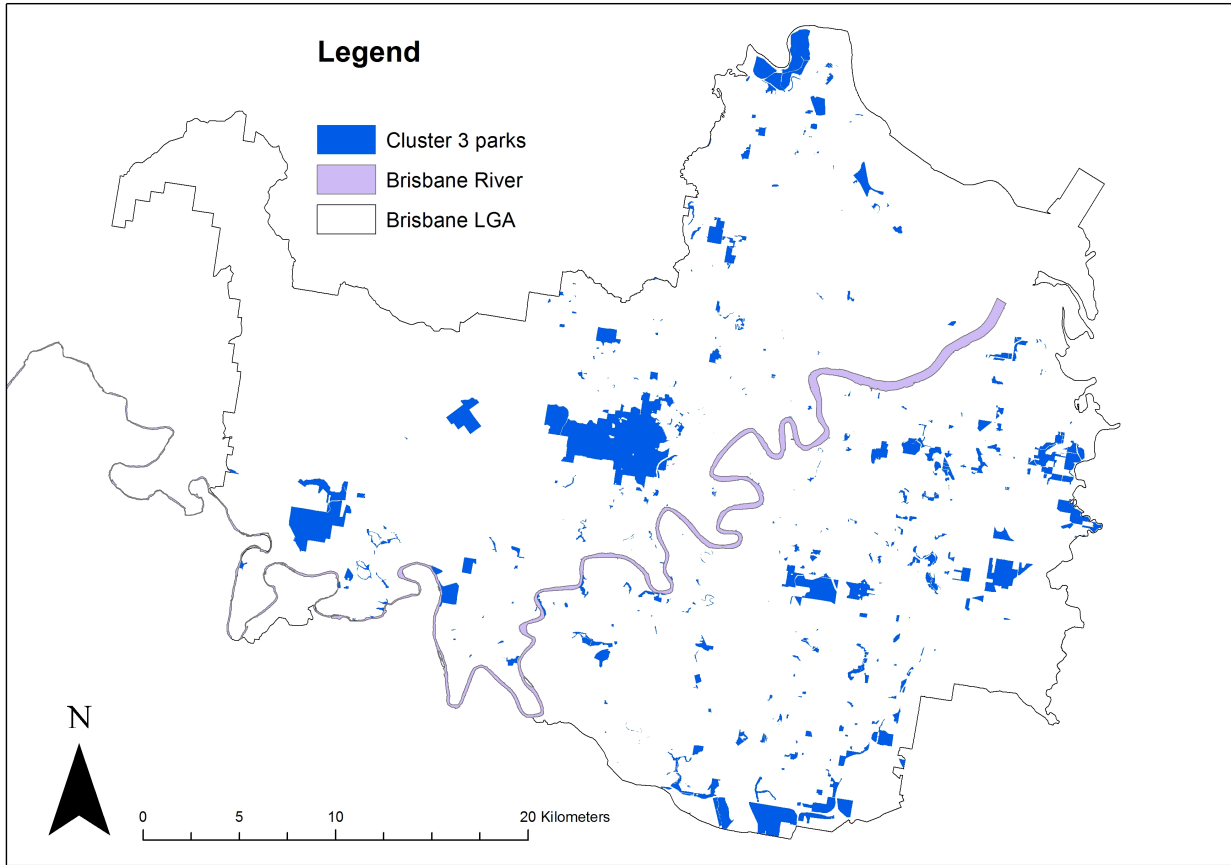


Figure S4. Map of the Brisbane Local Government Area (LGA) showing Cluster 3 public parks from the agglomerative hierarchical clustering of parks based on the spatial and vertical arrangement of vegetation in each park.

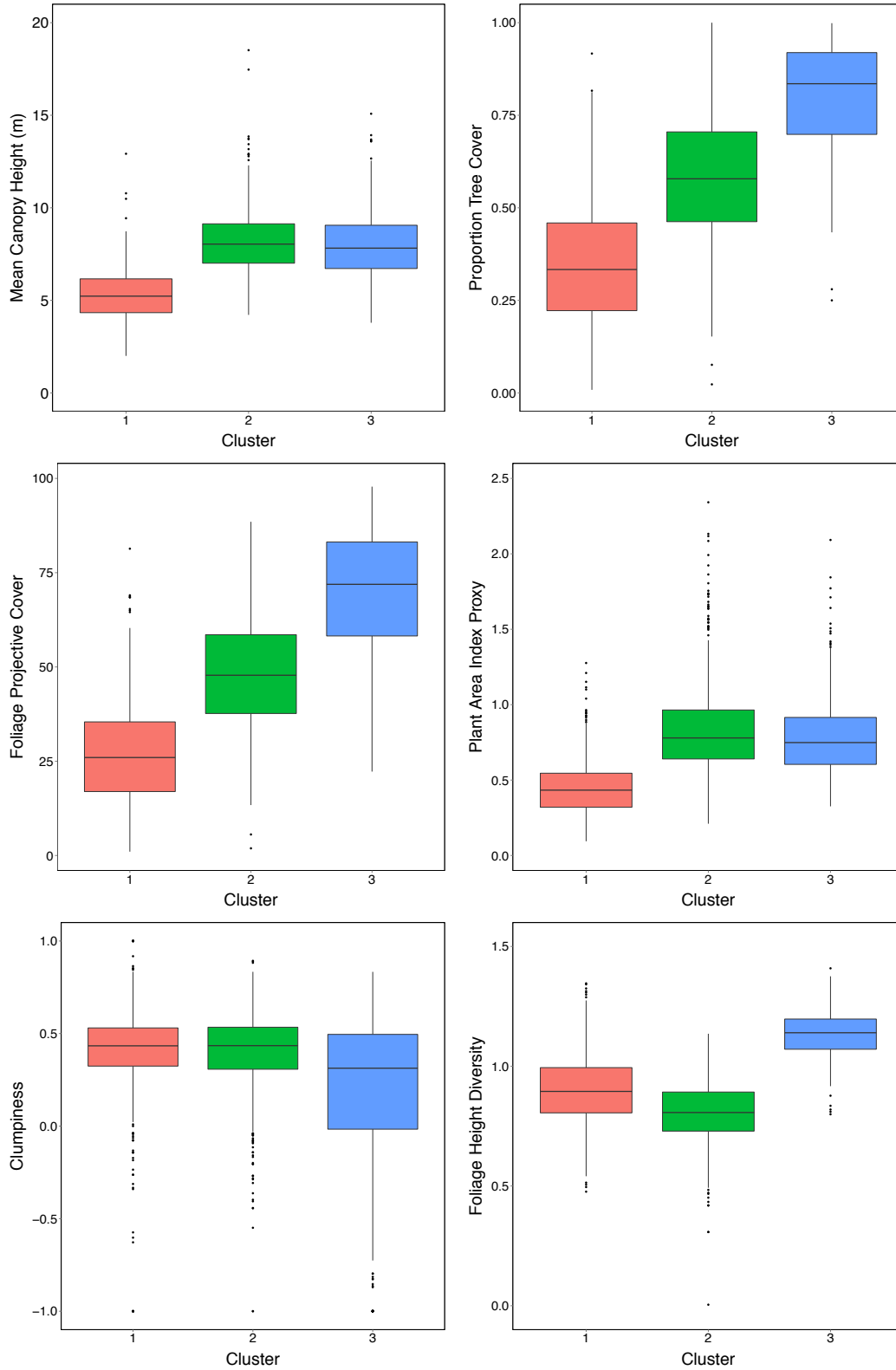


Figure S5. Differences in vegetation spatial and vertical arrangement variables between the three Brisbane park clusters identified using agglomerative hierarchical clustering. Figures show the mean (horizontal black line), 25th and 75th percentiles (bottom and top edges of the boxes, respectively), values within 1.5 inter-quartile range of 25th and 75th percentiles (bottom and top whiskers, respectively), and outliers (solid points).

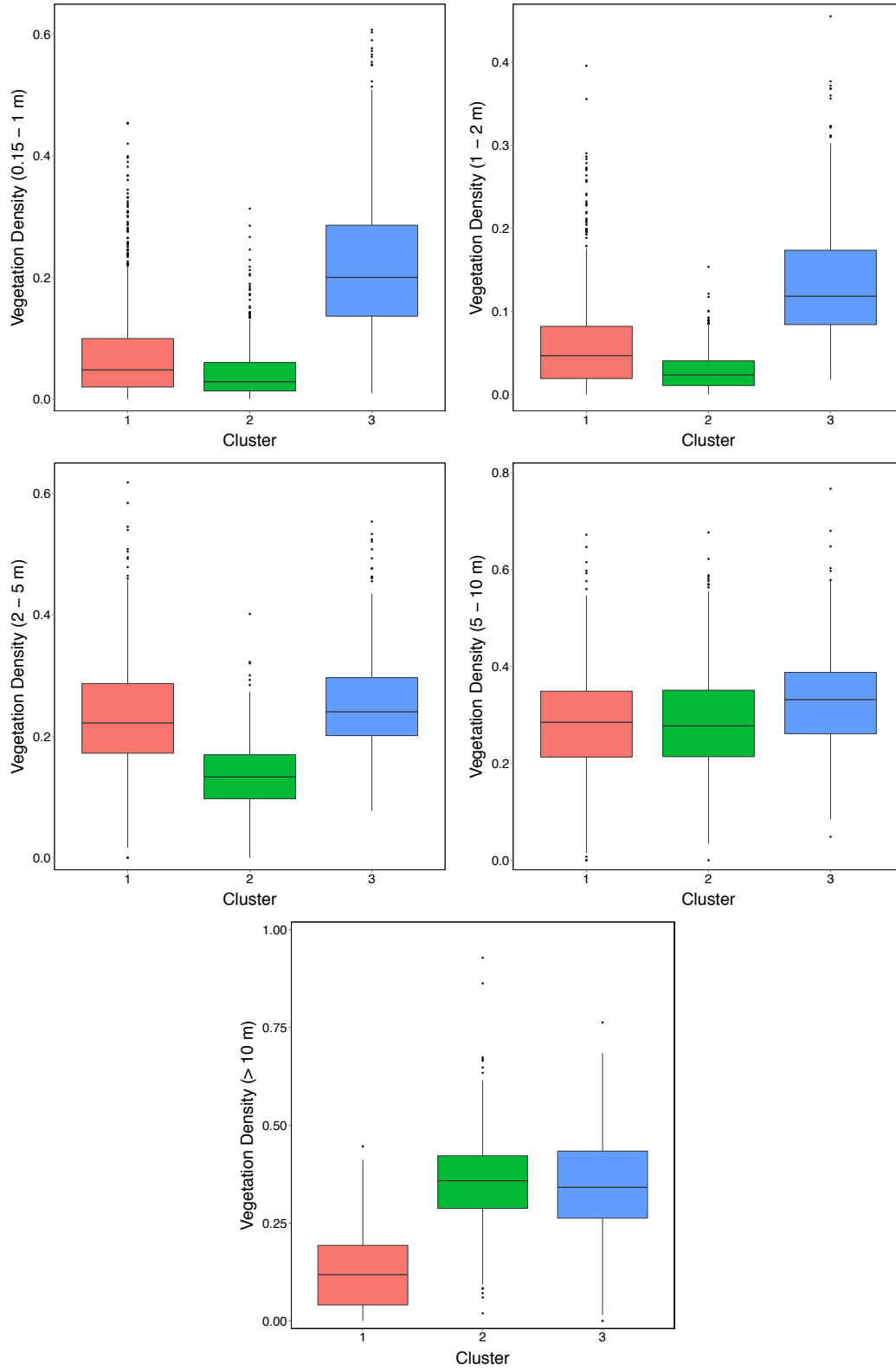


Figure S6. Differences in vegetation density in different vertical layers between the three Brisbane park clusters identified using agglomerative hierarchical clustering. Figures show the mean (horizontal black line), 25th and 75th percentiles (bottom and top edges of the boxes, respectively), values within 1.5 inter-quartile range of 25th and 75th percentiles (bottom and top whiskers, respectively), and outliers (solid points).