

Nowak *et al.* Supplementary Information

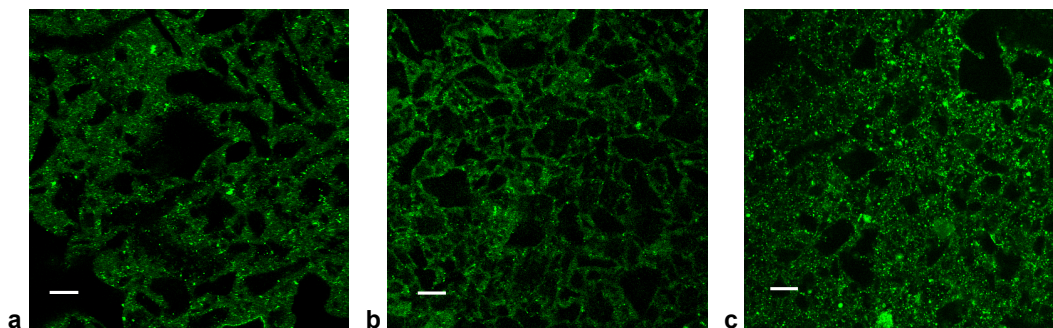


Figure S-1 Structure of $K_{160}L_{40}$ solutions at different concentrations as observed with Laser Scanning Confocal Microscopy: **a**, below gelation (0.125 wt%), **b**, near gelation point (0.25 wt%), and **c**, strong gel (1.0 wt%); scale bars denote 20 μm and rheology of samples is given in Fig. 2a.