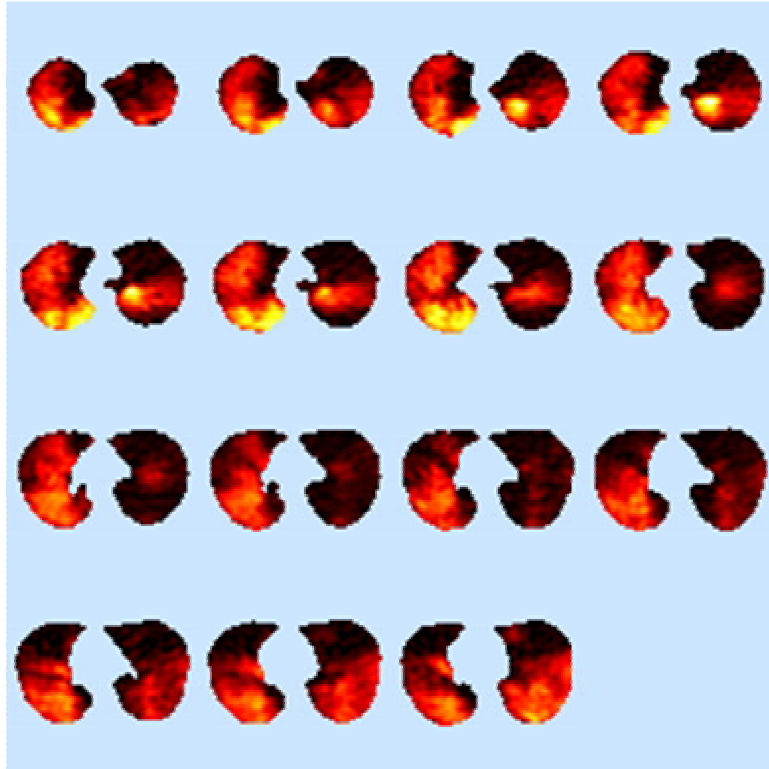
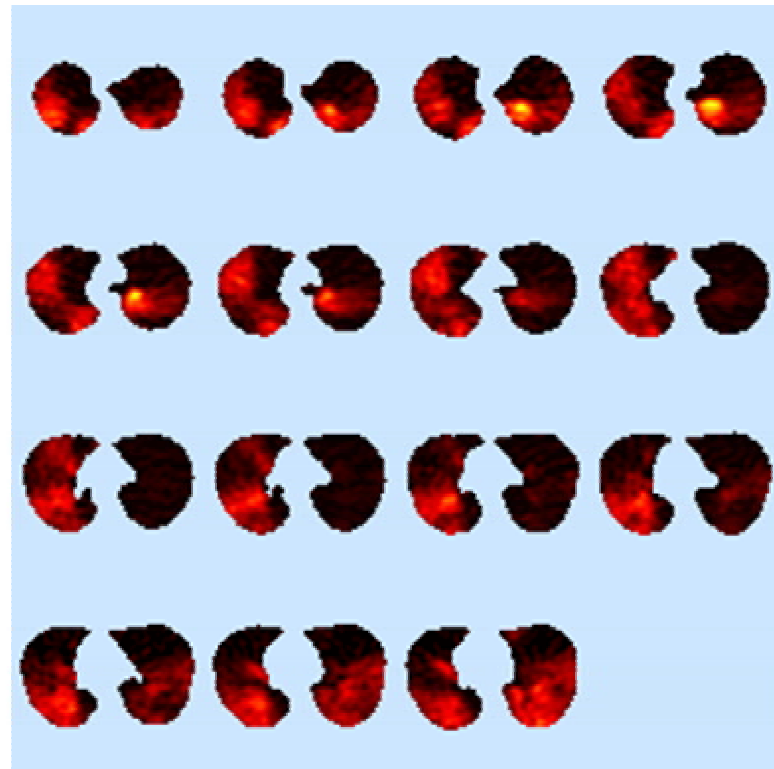


Before Deep Inspiration



After Deep Inspiration



S5 Supplementary Figure Full set of residual tracer PET images at end of washout from the bronchoconstricted asthmatic subject shown in Fig. 1 of the paper. Note the large ventilation defects with high residual tracer (left). At the end of the washout period the subject is asked to inhale deeply three times before imaging is continued for an additional period (right). Note that tracer removal by these deep inhalations is enhanced from certain parts of the defects and not from others.