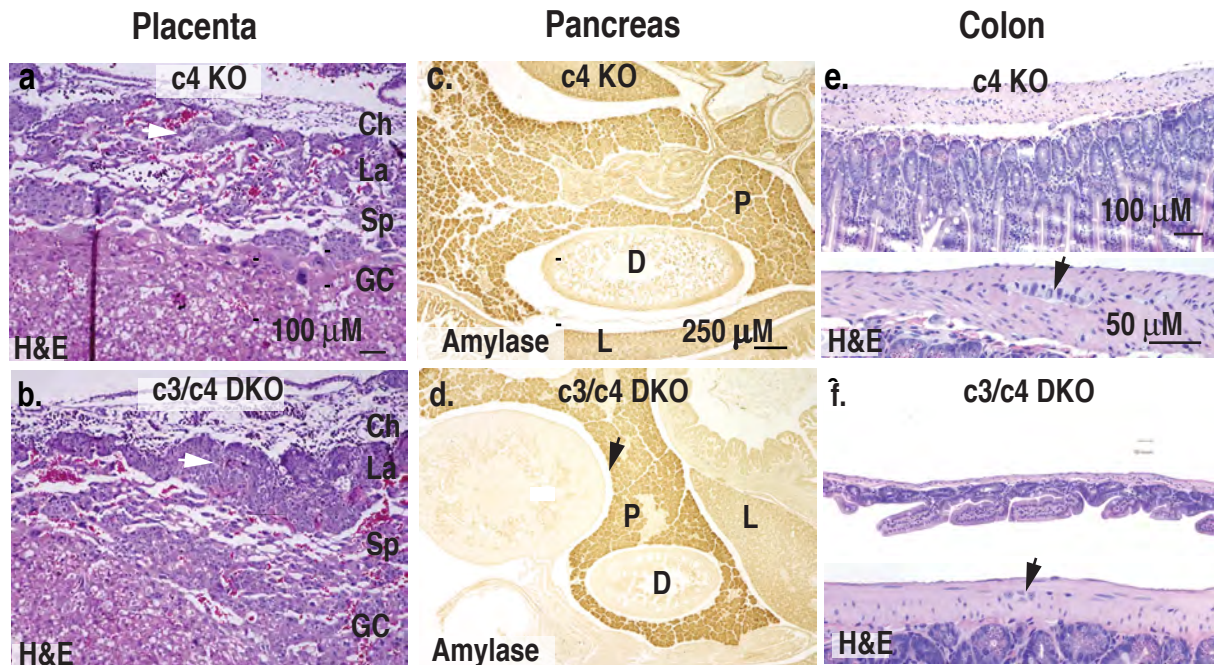


## NFATc Mutant Mice have Defects in Placental Vascularization, Annular Pancreas and Aganglionic Megacolon

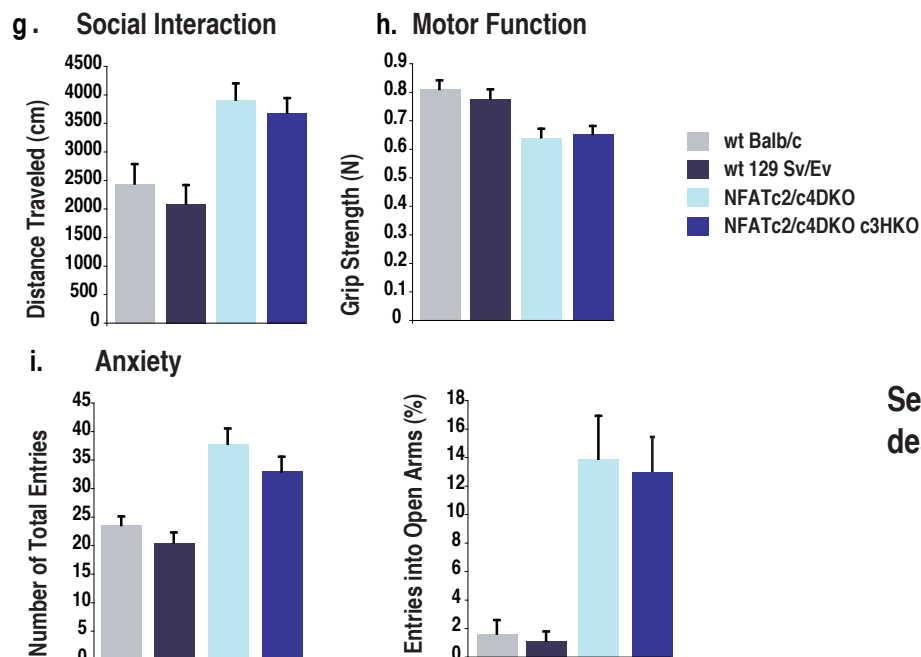


a-b) NFATc3/c4DKO E10.5 placenta shows decreased vascularity in the labyrinth layer relative to control (compare a to b), Ch, chorion; La, labyrinth; Sp, spongiotrophoblast; GC, giant cell layer.

c-d) Annular pancreas in E17.5 NFATc3/c4 DKO embryo encircles the duodenum. The pancreas is identified by Amylase staining P, pancreas; D, duodenum; L, liver.

e-f) Transverse section through colon from NFATc4KO (control) and hypoganglionic NFATc3/c4 DKO P14 mice. Arrowheads denote myenteric ganglia. Scale bar and staining type for each tissue is indicated in the figure.

## Increased Social Interactions, Reduced Motor Function and Reduced Anxiety in NFATc Mutant Mice



See supplementary methods for description of the testing procedures