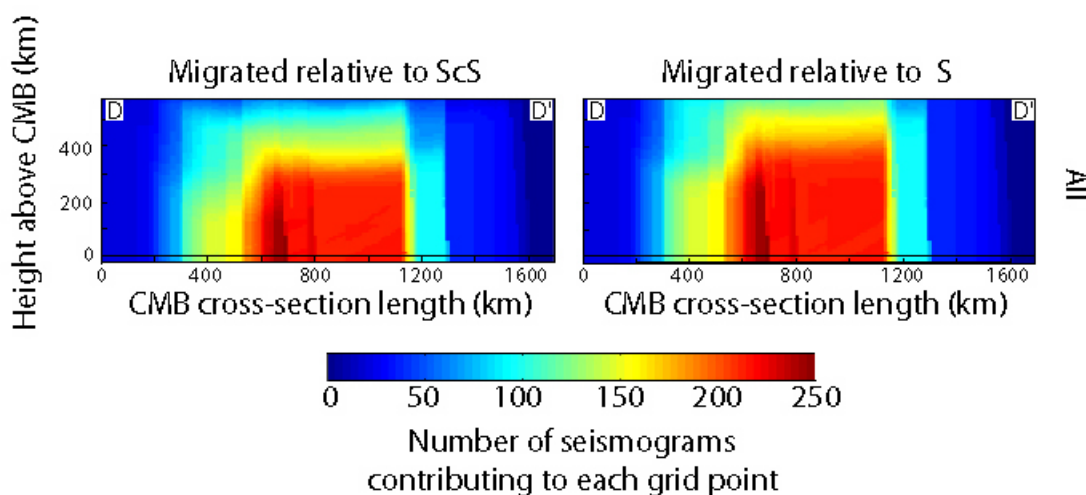
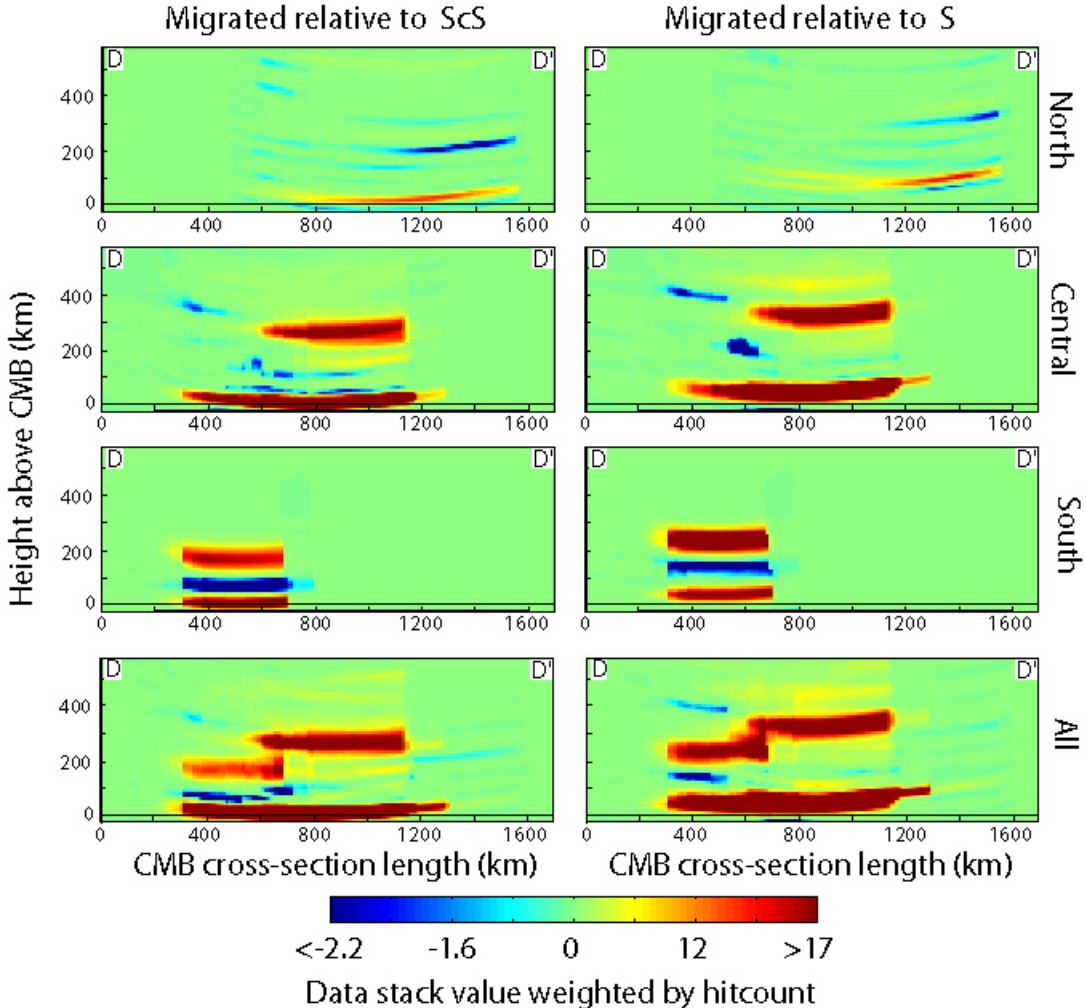
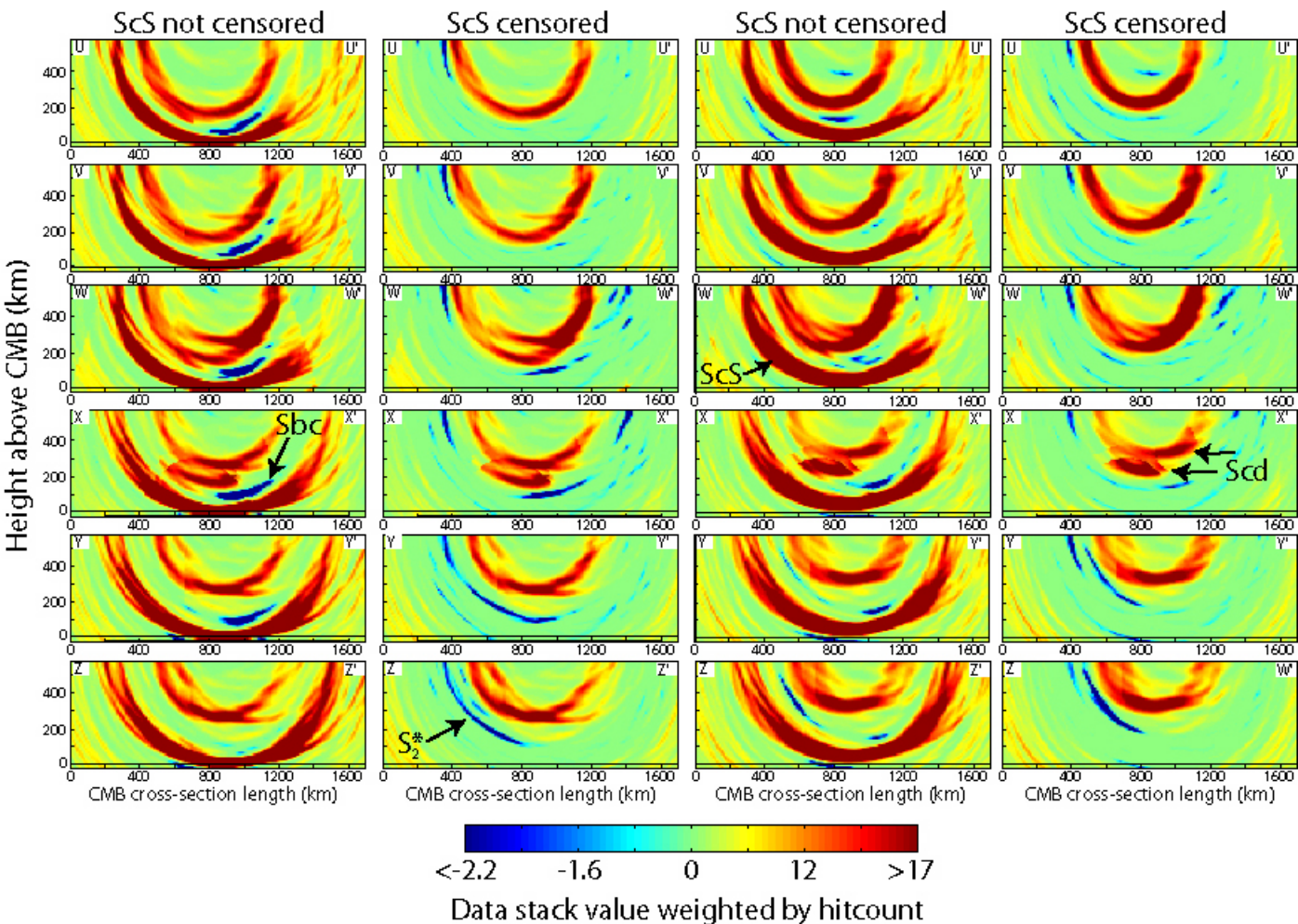


Supplementary Figure 1 [Hutko et al., 2006]

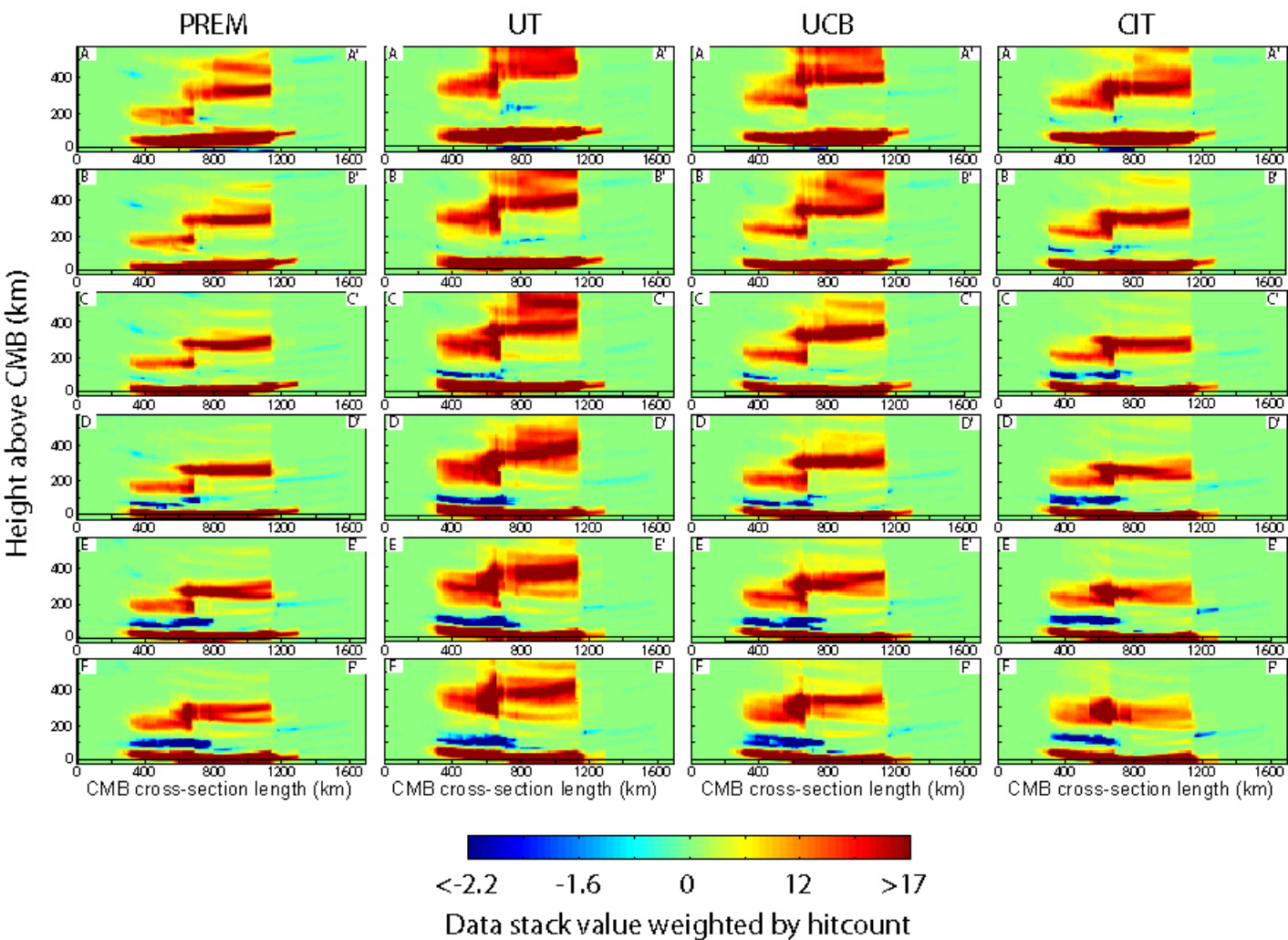


Migrated relative to ScS

Migrated relative to S

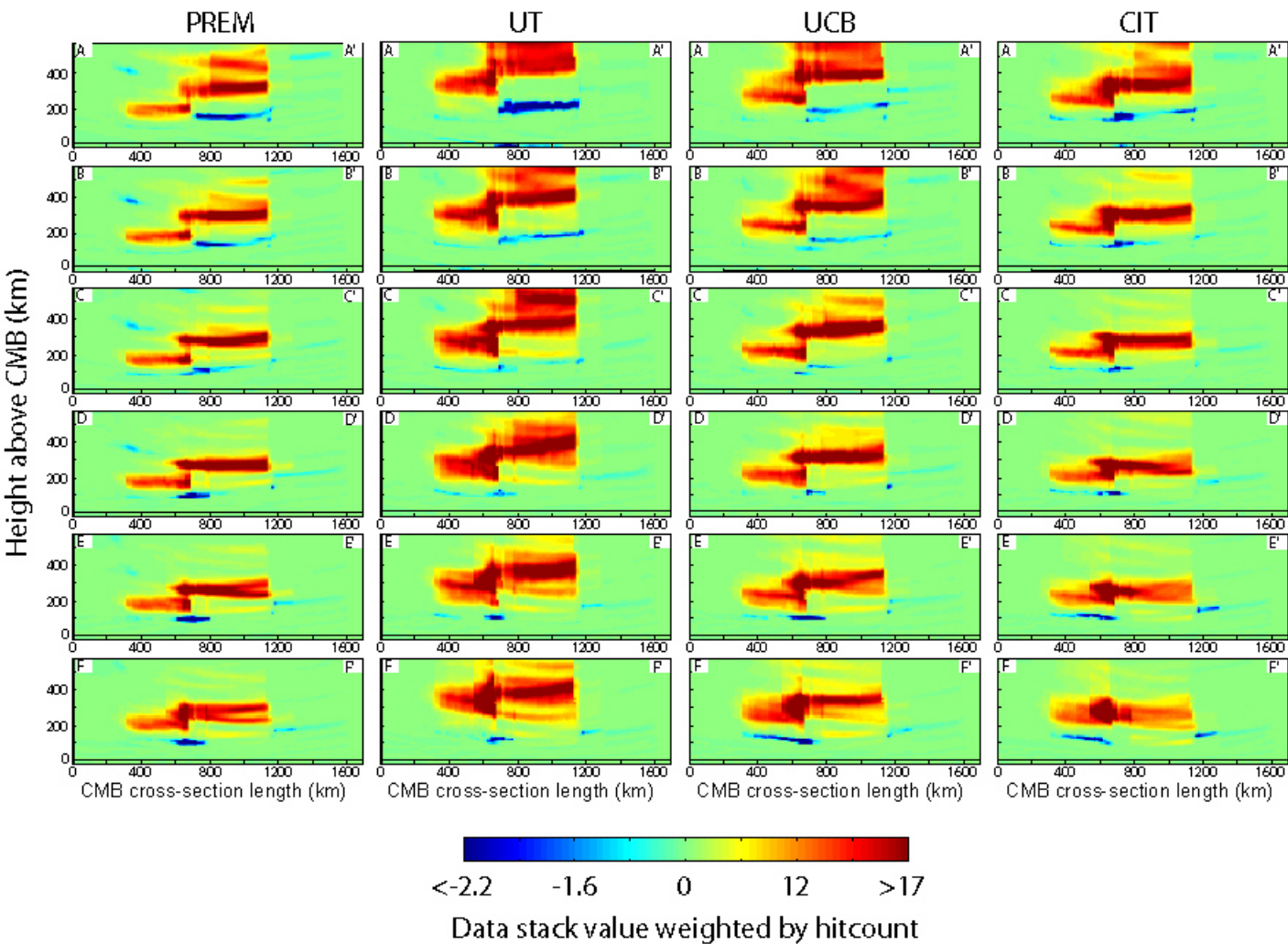


Migrated relative to ScS with ScS not censored

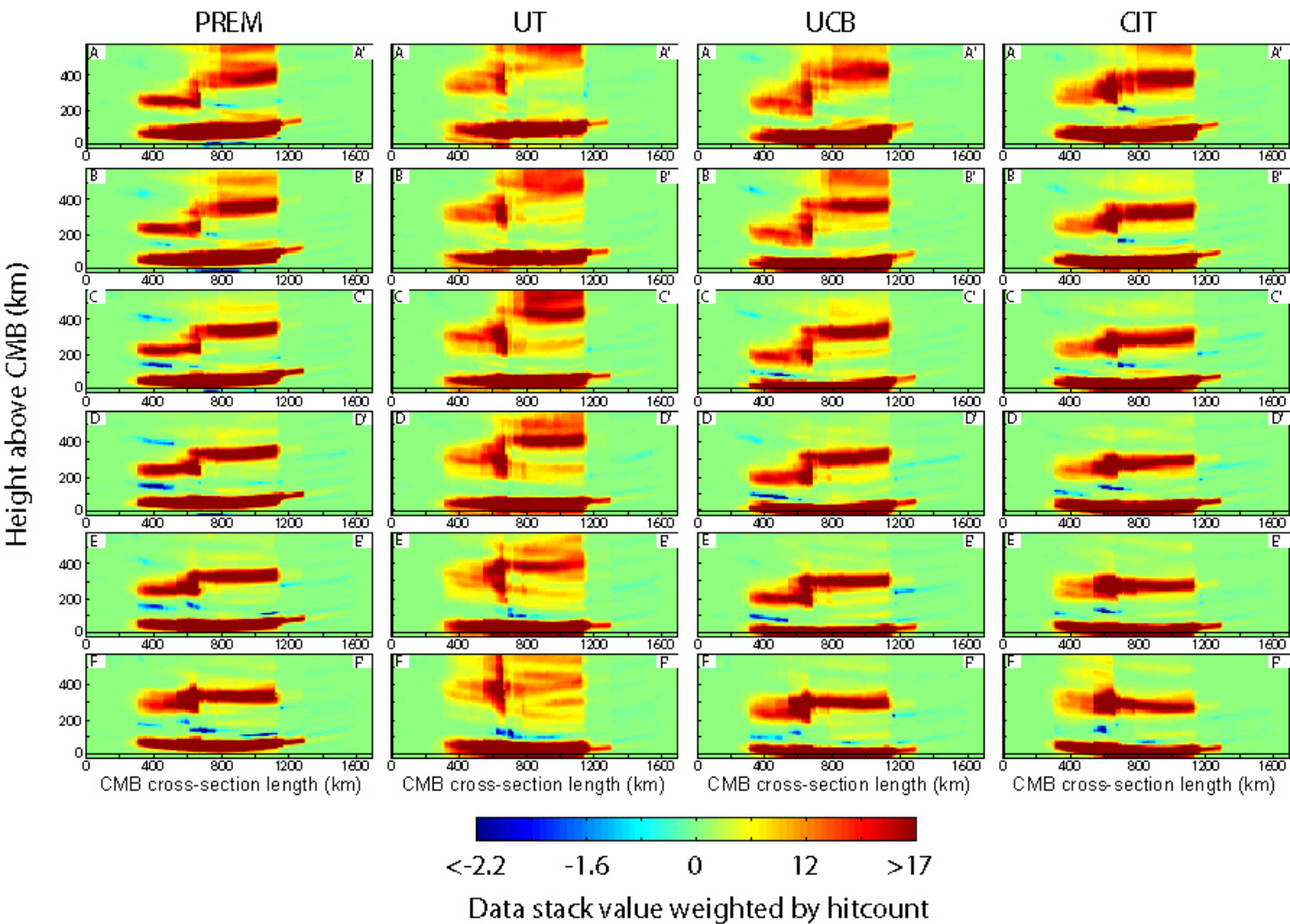


Supplementary Figure 4a [Hutko et al., 2006]

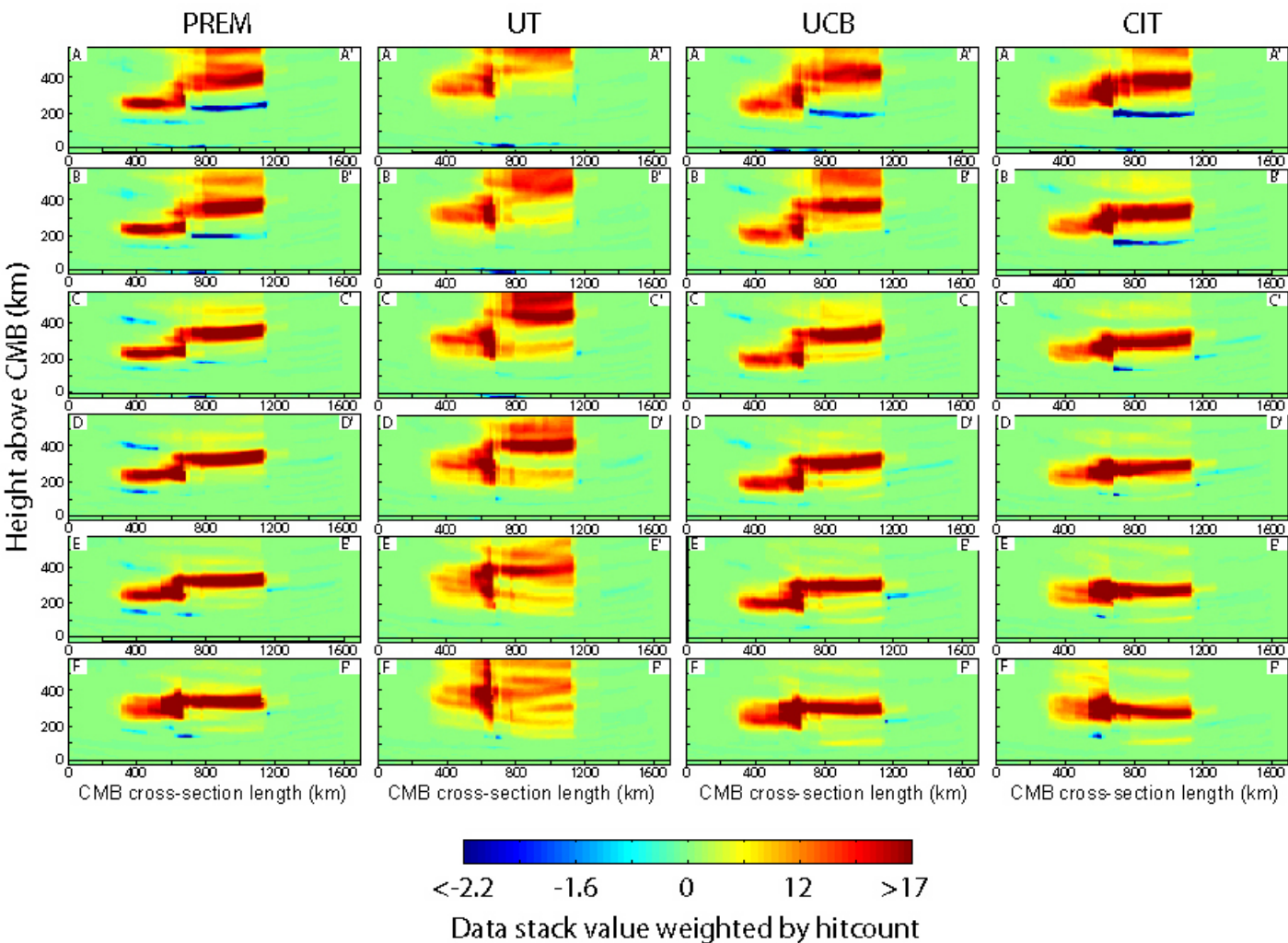
Migrated relative to ScS with ScS censored

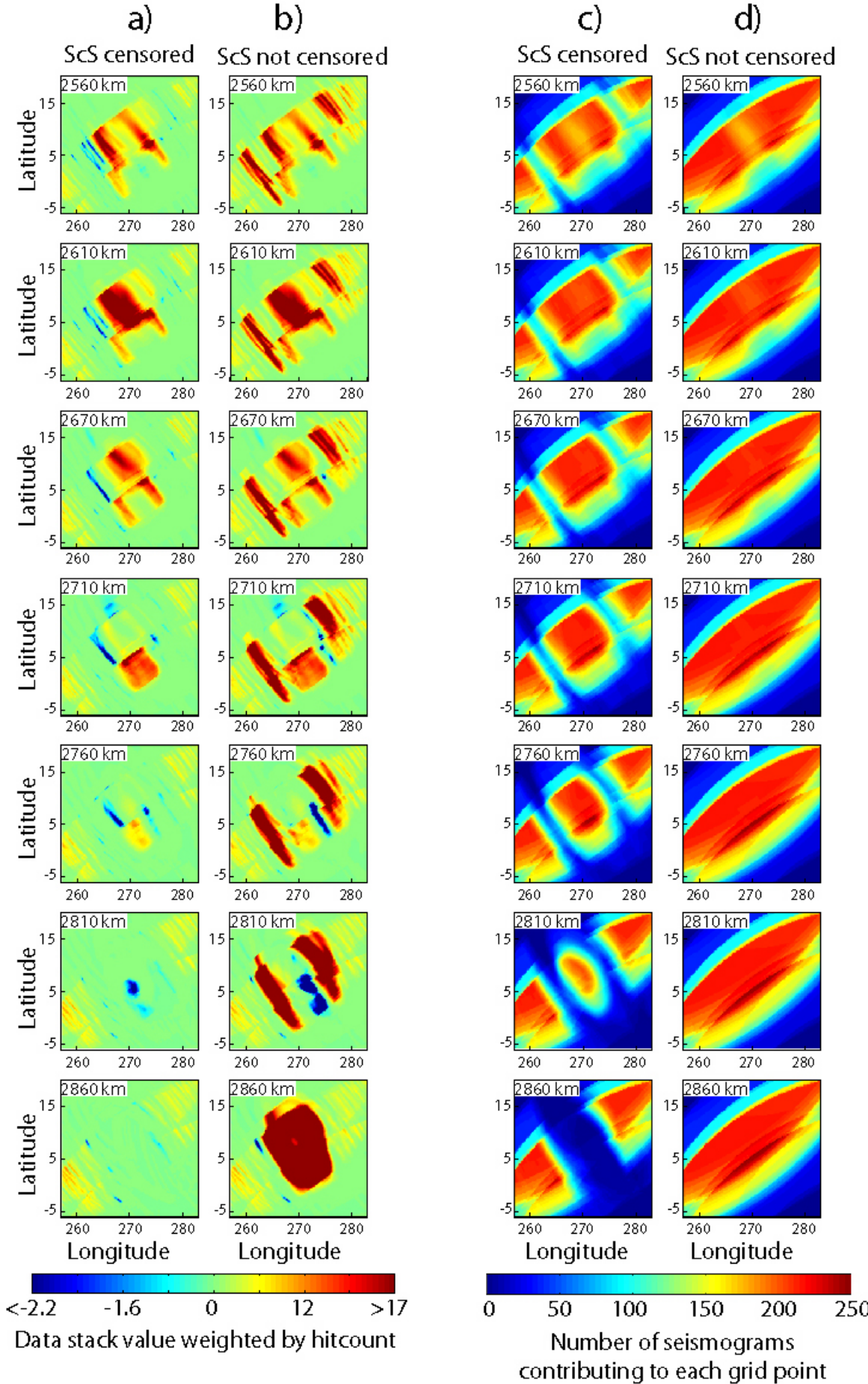


Migrated relative to S with ScS not censored



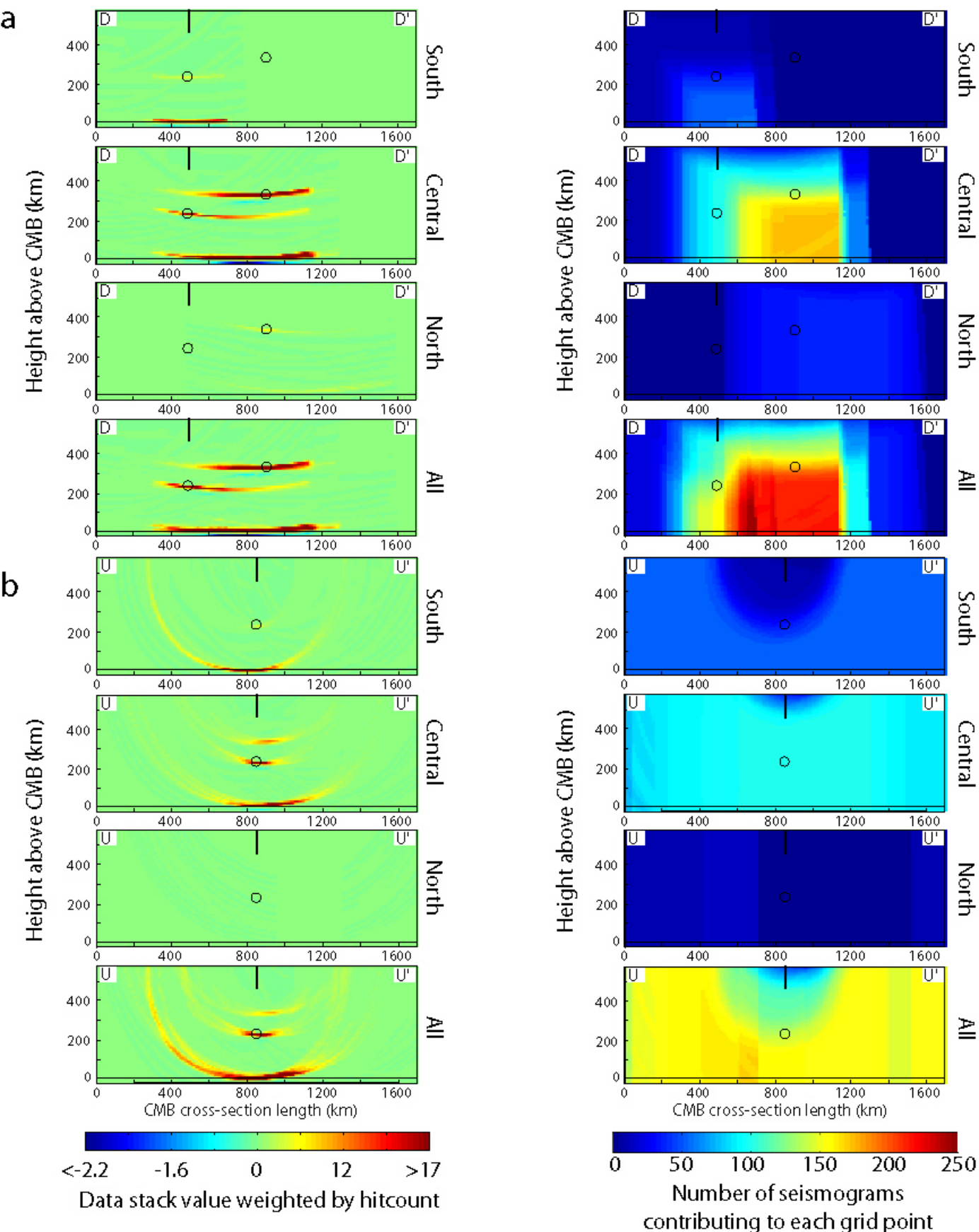
Migrated relative to S with SCS censored

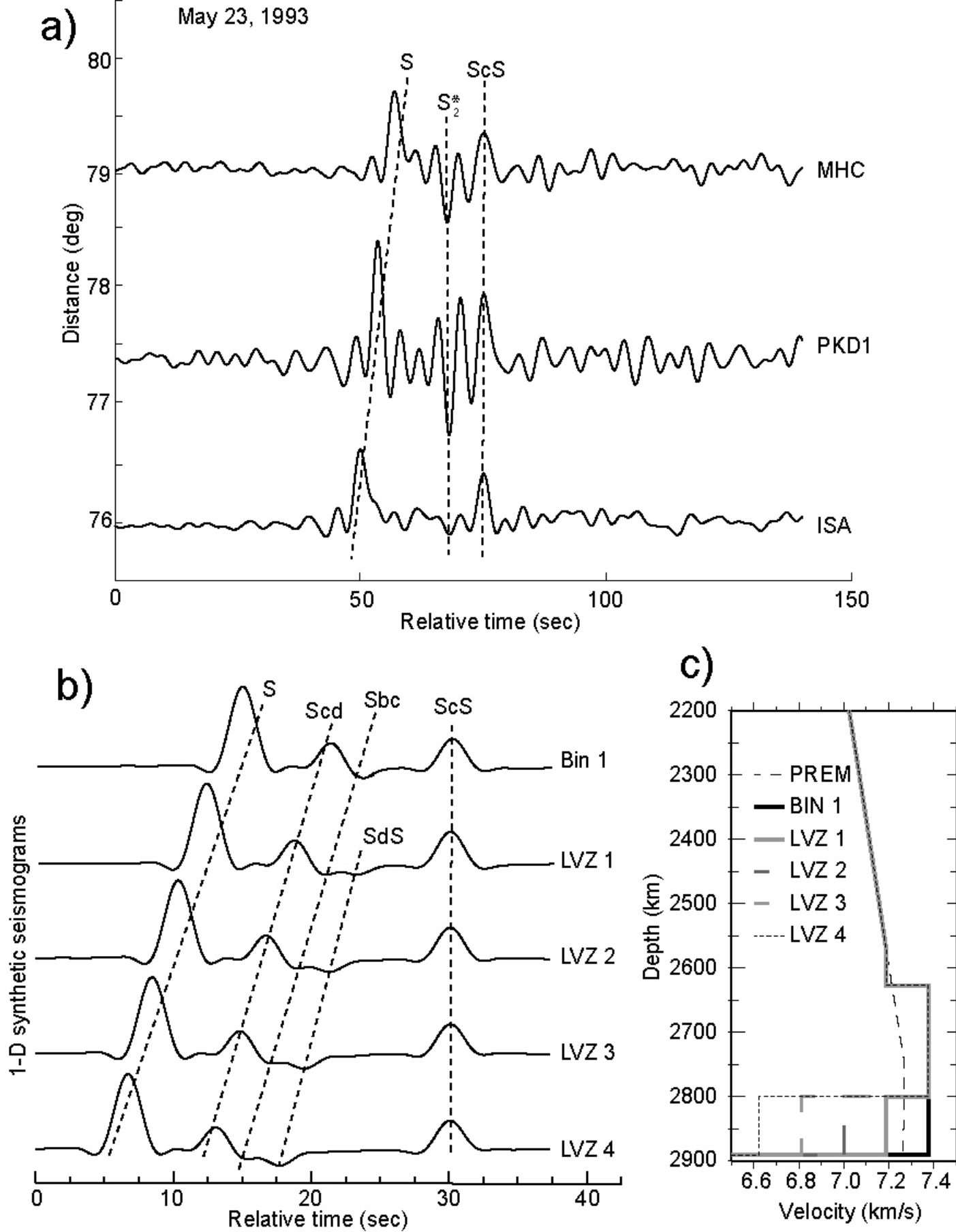




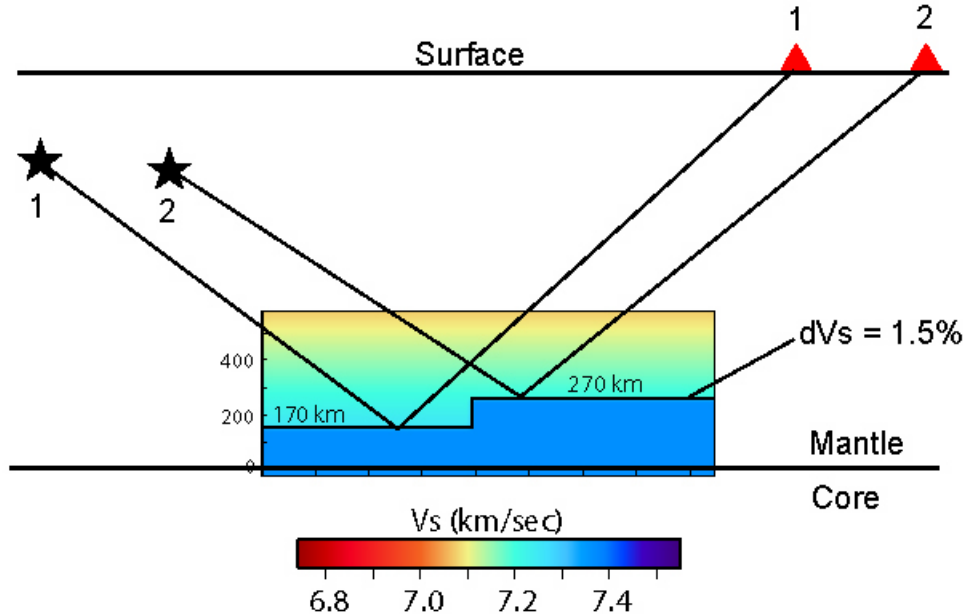
Supplementary Figure 5 [Hutko et al., 2006]

Migration of point scatterers

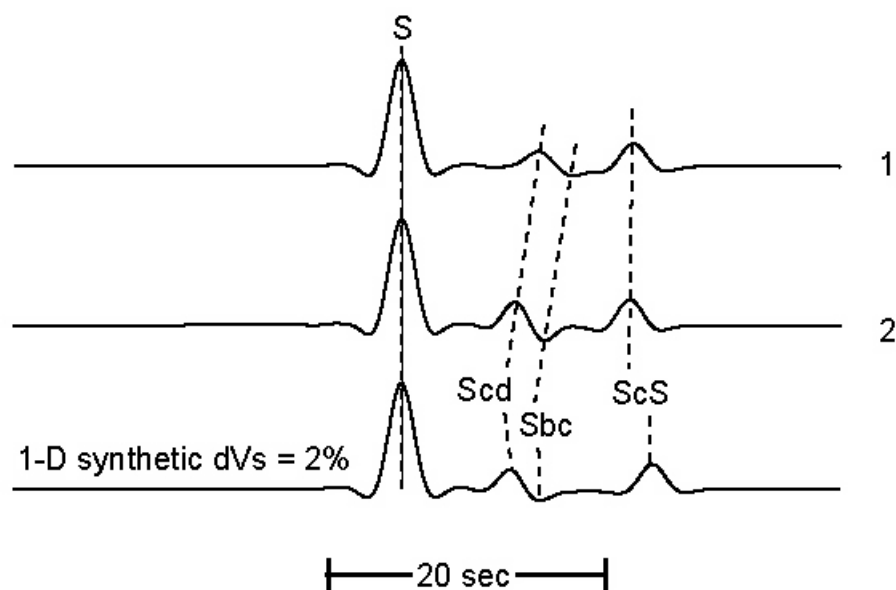




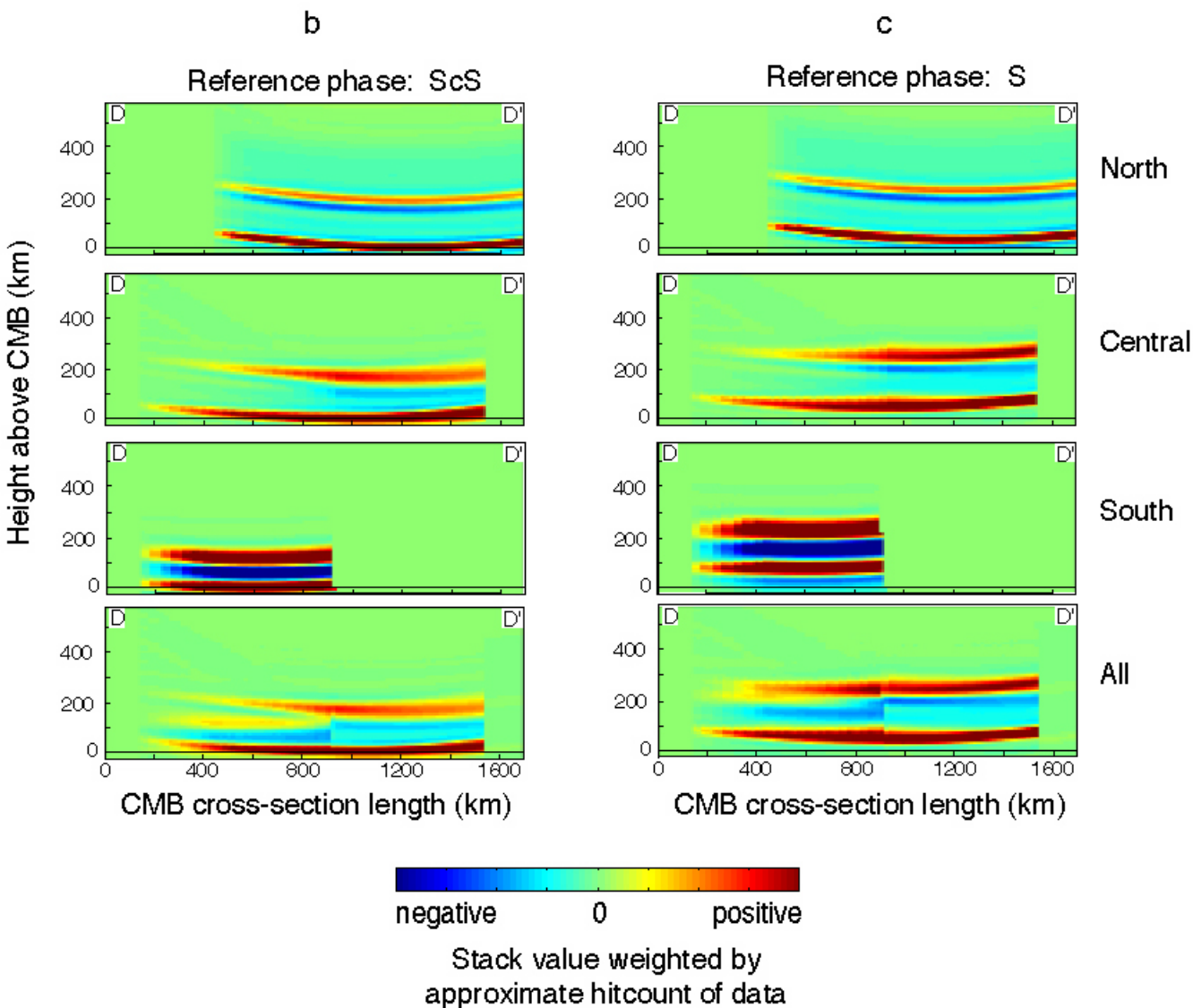
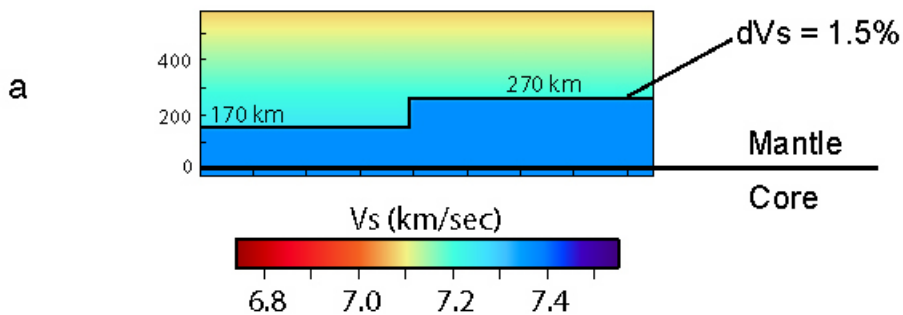
Supplementary Figure 7 [Hutko et al., 2006]



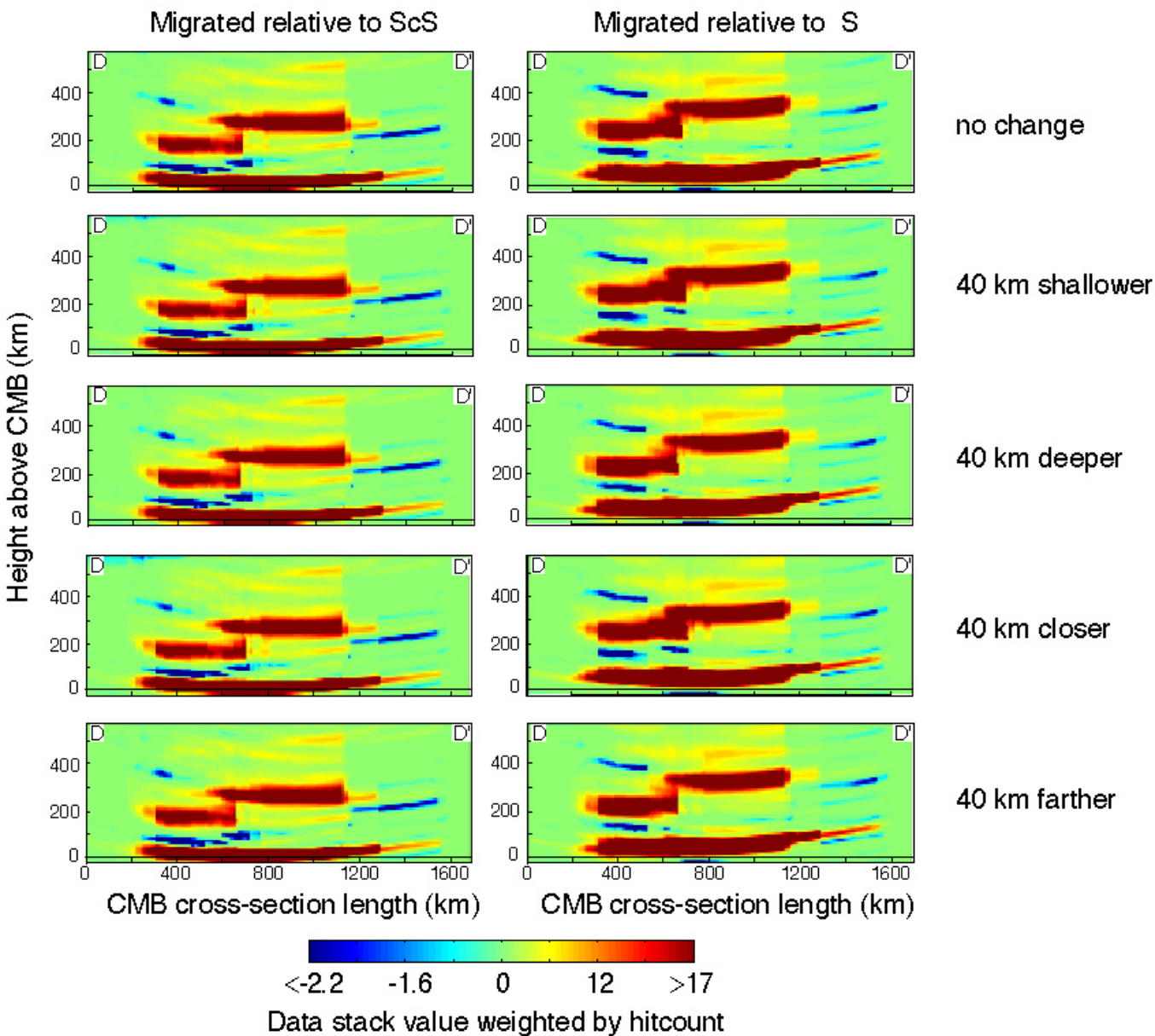
Source-receiver distance = 78 degrees for all 3 synthetic seismograms



Migration of 3D synthetic seismograms



The 5 earthquakes
in southern cluster
assumed to be:



1-D double array stacks

