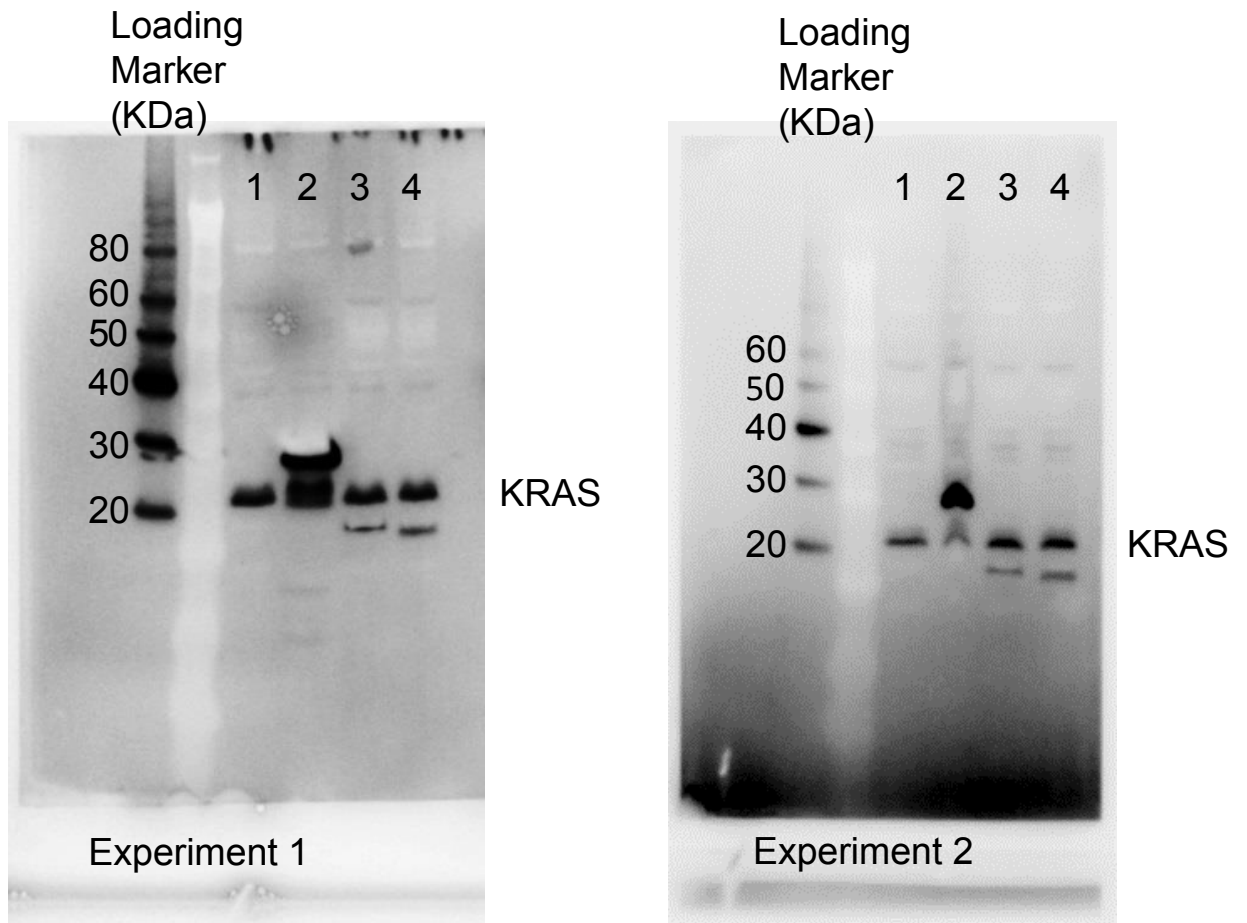
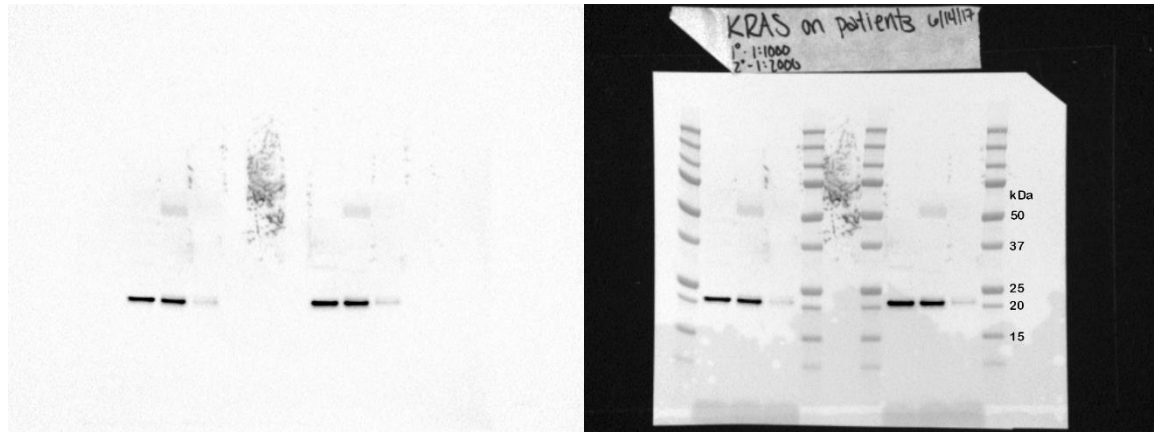


Supplementary Fig. 1a

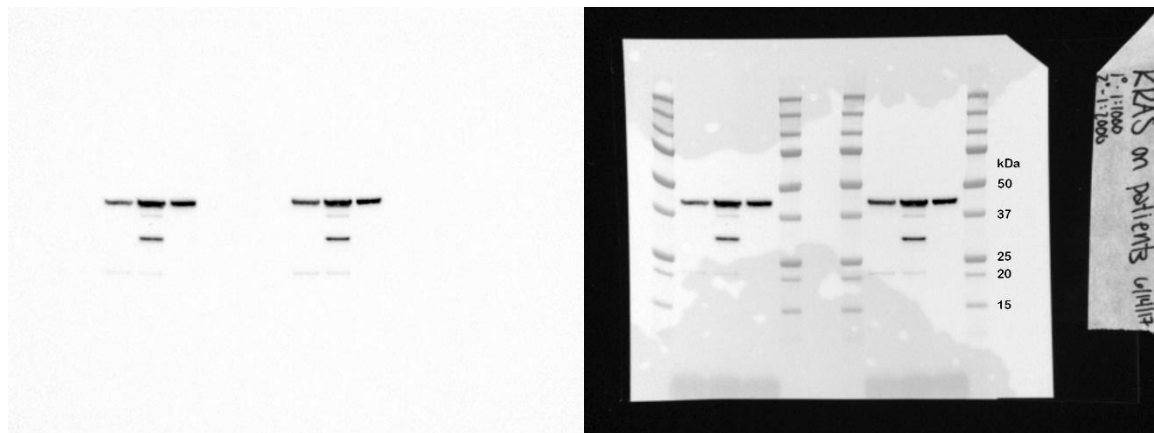


MagicMark XP was used for the loading marker control. This original western blot image was cropped at the molecular weight size lower than 40 KDa, including all sample lanes 1, 2, 3 and 4 and displayed in the text.

Supplementary Fig. 1b



Raw chemilumnescent image of western blot with anti-KRAS (left) and overlay with white-light image (right) to show Bio-Rad Precision Plus Protein™ All Blue Prestained Protein Standards.



Raw chemilumnescent image of western blot with anti-β-Actin (left) and overlay with white-light image (right) to show Bio-Rad Precision Plus Protein™ All Blue Prestained Protein Standards.