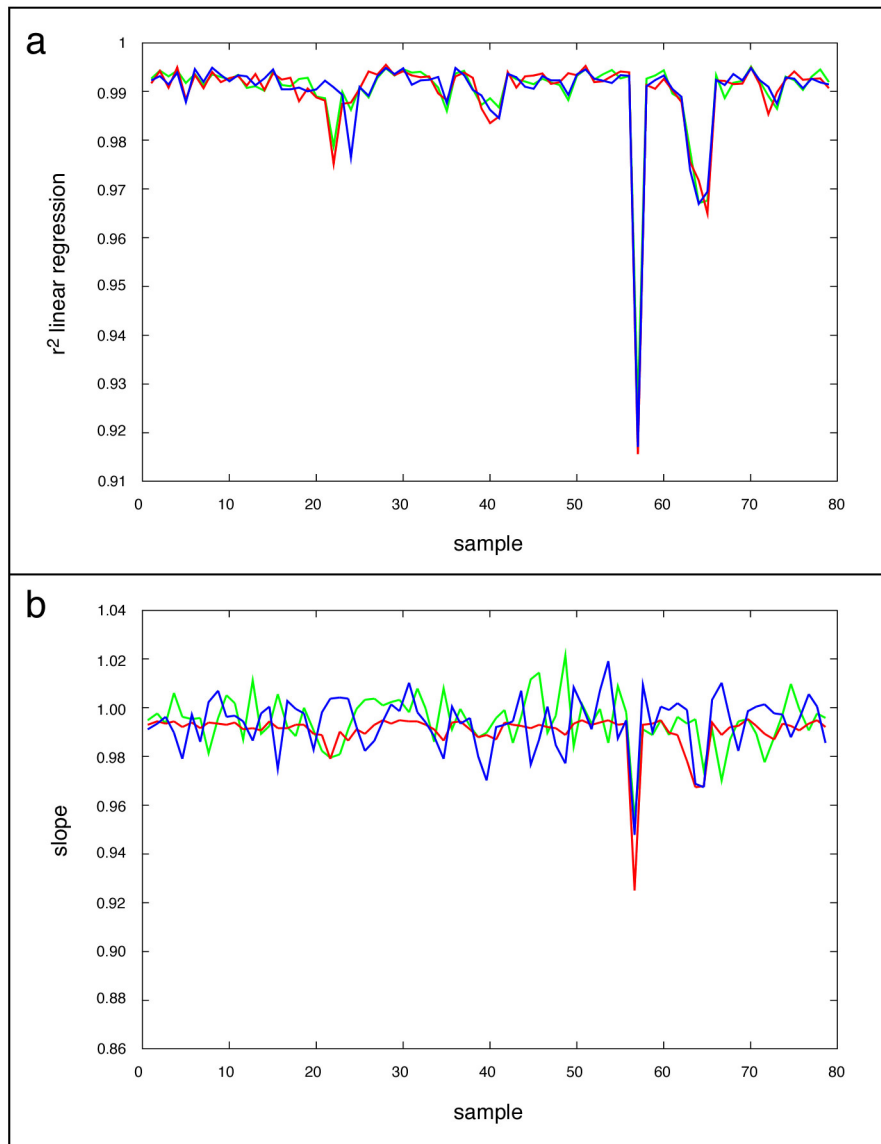


Schmid *et al.*: A gene expression map of *Arabidopsis* development



Supplementary Figure 1. Assessment of replicate quality for 79 samples probed in triplicate.

a) r^2 linear regression statistic of all three pair-wise comparisons as a measure of “goodness-of-fit” between replicates. Pollen and mature seeds have the least highly correlated replicates, with $r^2 = 0.91$ and 0.97 , respectively. **b)** As a measure of correlation, the slope for all pair-wise comparisons across replicates is shown. See Supplementary Table 1 for identification of sample identifiers, shown here in numeric order.